

Rimoldi®

Made in Italy

Rimoldi

Rimoldi

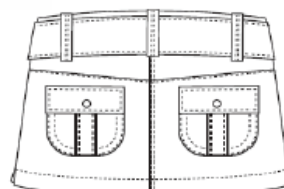
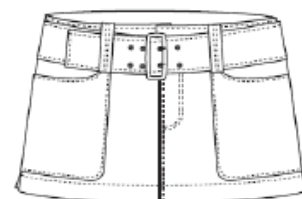
Rimoldi

Rimoldi

- 9.000 RMP
- High speed and very flexible 1,2 and 3 needle overlock

Vega II

- Safety
- Stich machine
- Suitable for all garment fields



Rimoldi

Rimoldi

Rimoldi

Rimoldi

Rimoldi

Rimoldi

Rimoldi

Rimoldi

DIVERSIFIED: a lot of families for many requirements

- F17: cylindrical arm overlock machine for seams on small diameter garments
- F20: 1 needle 2 threads (401) and 2 needles 4 threads (401) double chain stitch overlock machine
- F27: overlock machine: 1 needle 2 threads (503); 1 needle 3 threads (504); 2 needles 3 threads (509); 2 needles 4 threads (512-514)
- F29: safety stitch overlock machine: 2 needles 4 threads (515); 2 needles 5 threads (516); 3 needles 6 threads (401+515); 3 needles 7 threads (401+516)



PERFORMING: the best of its range

- Vega II is a high performing worldwide appreciated overlock machine
- Speed (up to 9.000 stitch/minute)
- New patented feeding system to guarantee feeding of the fabric
- Low inertia fabric presser bar
- Forced lubrication system
- Designed to accept a wide range of devices
- Stitch-length regulation by push button
- External lever differential-feed adjustment
- CE labour protection



SIMPLE: it does not like complication

- External oil filter
- Easy threading and seam adjustment
- Reduced maintenance
- On F29 easy looper disengagement for an easier threading

FLEXIBLE: the little multi task genius

- The special attention to the design of the sewing parts assures a wide use flexibility



Rimoldi

Rimoldi

Rimoldi

Rimoldi

Flexsystem and flexibility of Vega II

The Market trend is evolving and for this reason RIMOLDI decided to support and promote Flexsystem.

This technology is based on 4 basic units: Vega II (overlock), Sirio II (flat bed), Fenix (cylindrical arm), and Libra (feed-off-the-arm) along with a series of universal kits. This system grants high flexible performances



1. Kit-work plate

To convert from small arm cylinder - to normal overlock machine

2. Kit- cylinder base-small arm

To convert the machine from a normal overlock to small diameter cylinder arm machine

3. Automatic back latch and complete opening tension groups complete with electronic motor and control box

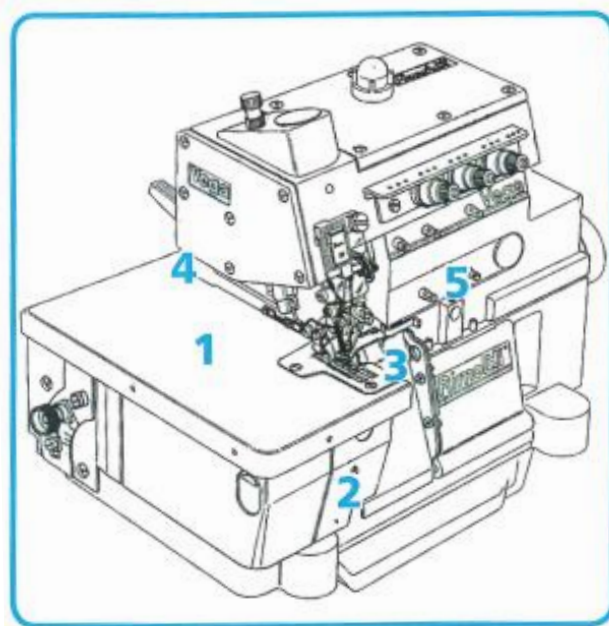
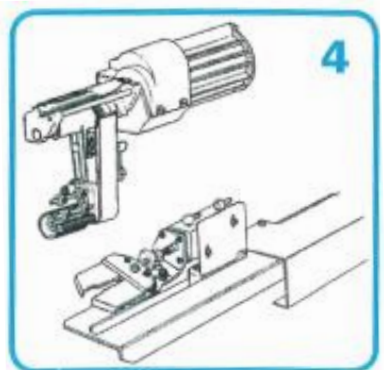
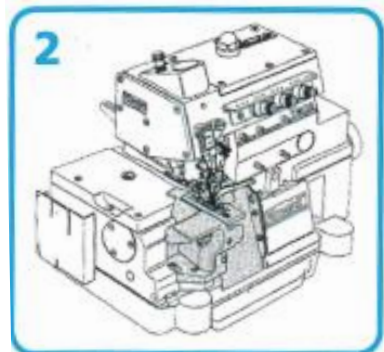
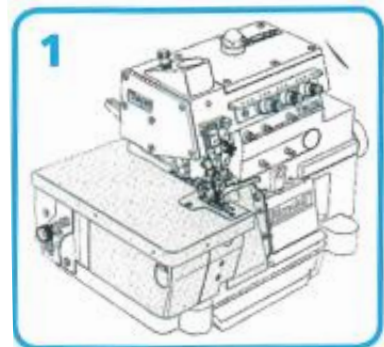
To equip the machine with automatic backlatch

4. Kit electronic tape cutter

To get automatic cut of tapes, chain, elastic, sharing the fabrics

5. Kit "Sonia"

To cut the elastic at the end of the seam in front of the foot, insert it under the foot at the beginning of the next seam providing the exact tension to obtain the right ruffling



Rimoldi®

Made in Italy

Dal 1881 cuciamo relazioni uniche

Rimoldi

Rimoldi

Rimoldi

Rimoldi

La nuova gamma di
macchine RIMOLDI:
un supporto all'industria
dell'abbigliamento
per una scelta garantita
e di qualità

The new range of
RIMOLDI machines:
an important support
for the garments industry
for a guaranteed and quality choice

