

# Rimoldi®

Made in Italy

Rimoldi

Rimoldi

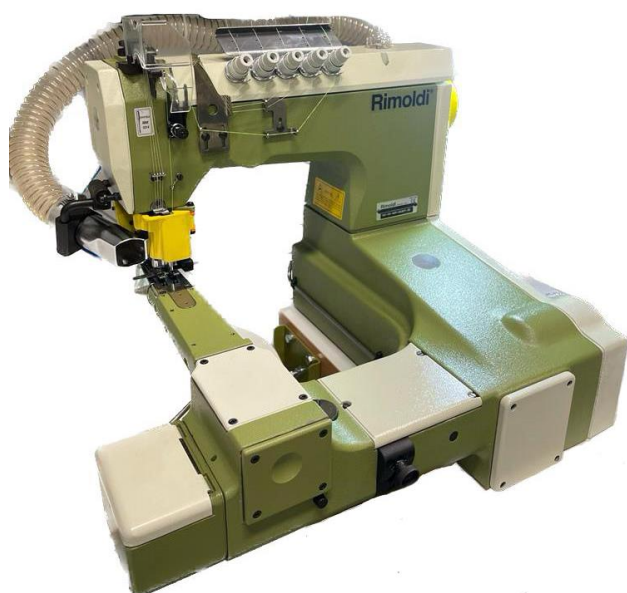
Rimoldi

Rimoldi

## LIBRA

### 181-183

4.200 RPM

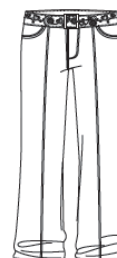


### F-84

6.000 RPM



Feed off the arm heads for assembling seams on a wide range of fabrics.



Rimoldi

Rimoldi

Rimoldi

Rimoldi

Rimoldi

Rimoldi

Rimoldi

Rimoldi

### **DIVERSIFIED: 2 families of machines to cover many requirements**

- 181- 38: 4 needles feed off the arm, interlock machine without top covering stitch, with differential feed and upper trimming knives. Suitable to attach a reinforcement tape, coming from above, on the gusset of men's briefs.
- 183-00: feed off the arm, interlock machine with top covering stitch. Suitable for assembling operation on hosiery industry.
- Needle distances 5,4 mm or 6 mm



### **PERFORMING: the best of the range**

- Feed of the arm with and ergonomic shape to allow the operator to sit with excellent vision of the sewing area.
- Foot lift up to 6 mm: to work with heavy fabrics.
- The foot is equipped with spring plates to stay in contact with the needle plate, avoiding the fabric slipping during sewing operation. Suitable for light fabric.
- Stich length is adjusted by push button. A graduated scale located on the hand wheel allows the selection of the stitch length.
- Differential feed: easily adjustable to control feeding of fabrics. It can be actuated even when machine is running by a knee press.
- Trimming knives: incorporated in the sole of the foot, allows an accurate cutting of the fabric.



### **OPERATING: simply & clear**

- Easy control of the fabric
- Ergonomic working position
- Reduced operator fatigue
- Clear view of the sewing area

### **THE EVOLUTION**

This family of machines was born to make high quality seams on pantyhoses and socks. Over time it has evolved into a more versatile machine that can be used for underwear and sportswear too

Rimoldi

Rimoldi

Rimoldi

Rimoldi

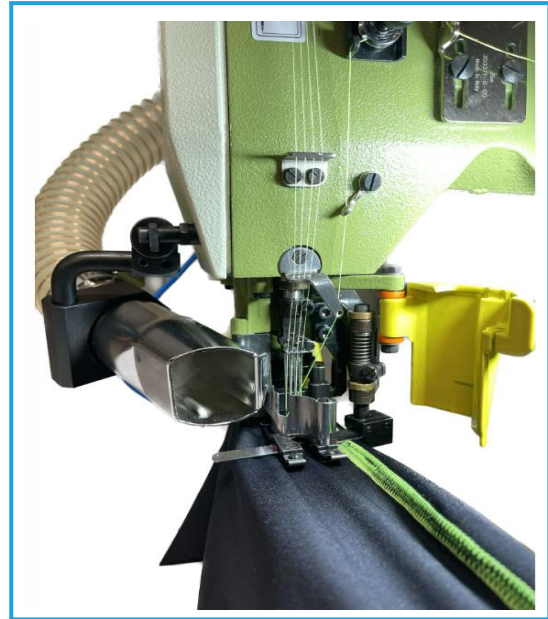
## Class 181-183

### UNDERWEAR 181-38 4 NEEDLES

- Sewing machine to attach a reinforcement tape, coming from above, on the front of men's briefs

### KNITWEAR, LINGERIE, SWIMWEAR AND OUTERWEAR 183-00 4 NEEDLES

- Machine for flat, long lasting and elastic seams obtained by joining two pretrimmed fabric. The seam can also be done overlapping the fabrics without the trimming knives and using the folder on demand. It can be used for underwear, outerwear, gusset application, for briefs and t-shirt side closing, for t-shirts shoulder closing and sleeves application



### Special Devices for 181-183

**154-30:** Pedal actuated waste vacuuming device, fitted closed to the foot.

**154-81:** EV waste vacuuming device, fitted close to the foot controlled by electronic motor

**164-15:** Knee press "scissor" type chain cutter

**157-80:** Pneumatic foot lifter actuated by EV and electronic motor

**157-30:** Back treadle pneumatic foot lifter

**170-10:** Knee press for differential feed, adjustment when the machine is running



Rimoldi

Rimoldi

Rimoldi

Rimoldi

## Libra F84: THE NEW GENERATION

### PERFORMING: the best of the range

- Cilinder bed and an ergonomic shape to allow the operator sit with excellent vision of the sewing area
- Stitch length is adjusted by push button
- Disengageable and swingable loopers
- Forced lubrication
- Puller auxiliary feeding
- Needle distances 4,8 mm; 6,4 mm or 7,2 mm



### SHIRTS F84-00 2/3 NEEDLES

- Chain stitch machine to lap seam light and medium fabrics, with disengageable loopers for a fast and easy threading. It can be equipped with a double lap seam folder fitted on a movable slide to move it far from the foot for easy insertion of the fabric under the foot

### KNITWEAR F84-38 2 NEEDLES

- Application of a knitted strip on shoulders and back of neck of T-shirt

### JEANS AND CASUALWEAR F84-00

- Machines for lap seaming operation suitable for medium heavy fabrics

### Special Devices for Libra F84

**164-15:** Knee press "scissor type" chain cutter

**259-30:** Treadle control needle cooling device

**259-80:** EV needle cooling device controlled by electronic motor

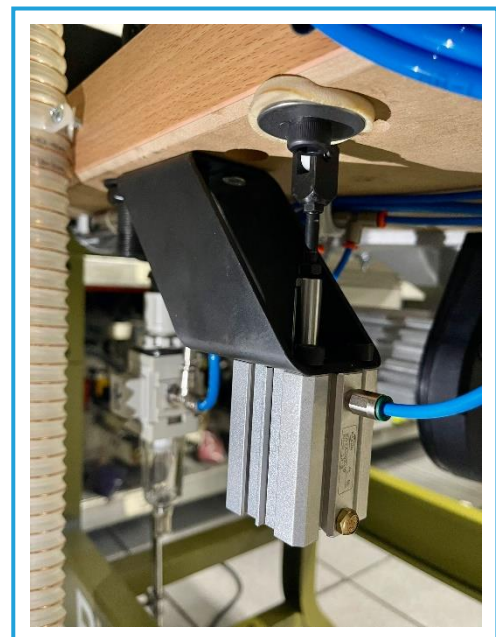
**296-30:** Back treadle vertical type chain cutter

**296-80:** EV pneumatic vacuuming chain cutter controlled by electronic motor

**170-10:** Knee press device for differential feed adjustment when the machine is running

**257-30:** Back treadle pneumatic presser foot lifter

**257-80:** EV pneumatic presser foot lifter controlled by



Rimoldi

Rimoldi

Rimoldi

Rimoldi