

# Rimoldi

CATALOGO PEZZI DI RICAMBIO  
SPARE PARTS CATALOGUE  
CATALOGUE RECHANGES  
ERSATZTEILELISTE

## 715

FALDATRICE A MANO

Macchina faldatrice con spinta a mano per la stenditura di tessuti a maglia sia prodotti da telai tubolari che circolari.

**n. 78**

652800000

Fig.	PARTICOLARE	Qt.
1	08002	1
2	saeger 12 UNI 3653	2
3	08014	2
4	saeger 32 UNI 3654	2
5	3201	2
6	08008	2
7	08009	2
8	rondella 12 UNI 1734	2
9	dado MA12 UNI 5588	2

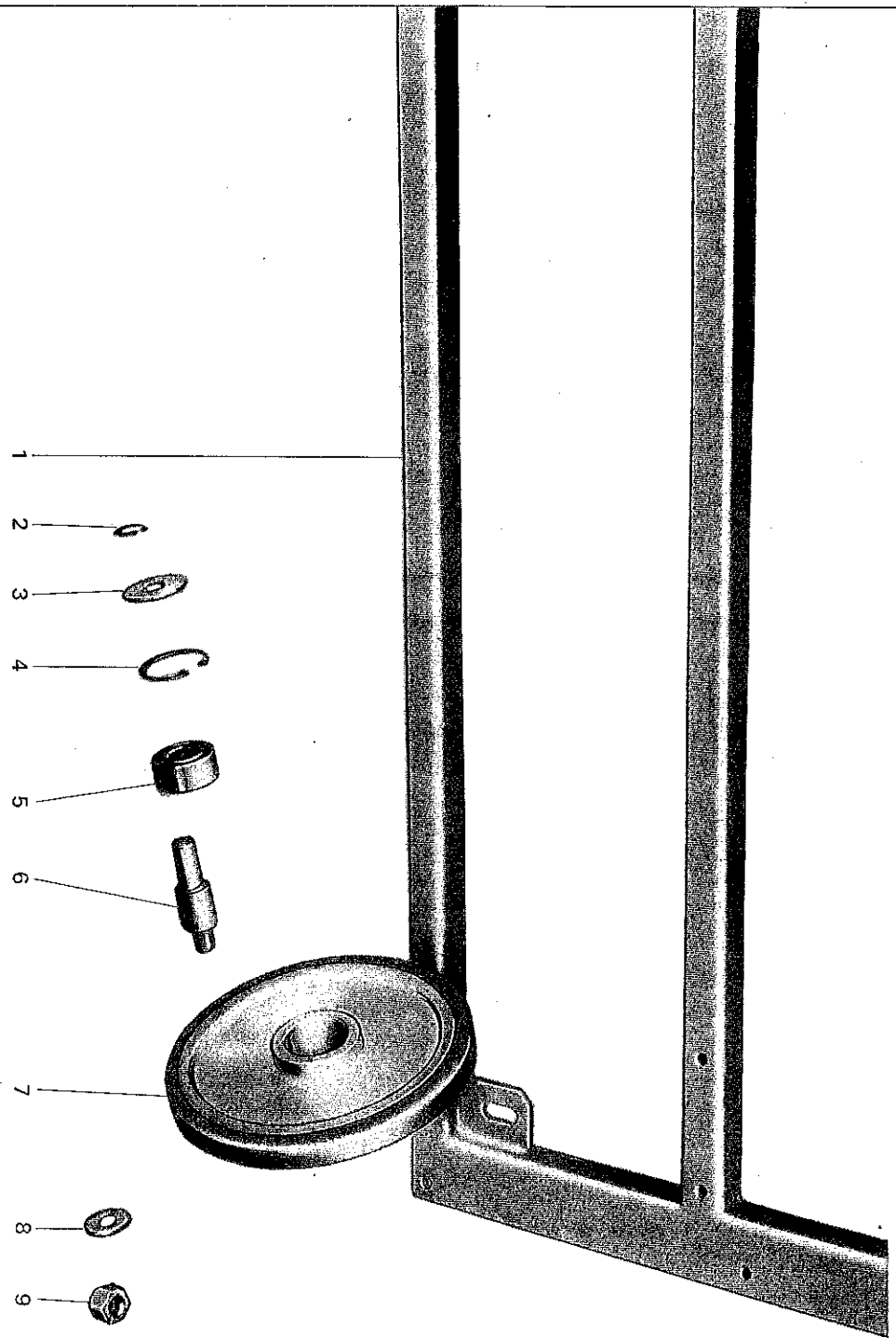


Fig.	PARTICOLARE	Qt.
1	08002	1
2	08015	1
3	08020	2
4	08023	1
5	08026	1
6	08018	2
7	08017	1
8	08021	1
9	vitette 6x40 UNI 5737	2
10	rondella 6 UNI 1734	2
11	08212	4
12	vite TE 5x10 UNI 5931	3
13	spina elast. 4x30 DIN 1481	2
14	6201-Z	2
15	08022	2
16	08019/1	1
17	08019	1
18	7201	1
19	08016	1
20	rondella 12 UNI 1734	1
21	dado MA12 UNI 5589	1
22	08238	2
23	dado MA8 UNI 5588	1
24	spina elast. 4x25DIN 1481	1
25	seeger 12 UNI 3653	2
26	08014	1
27	seeger 32 UNI 3654	3
28	3201	1
29	08113	1
30	08012	1
31	rondella 10 UNI 1734	1
32	dado MA 10 UNI 5588	1

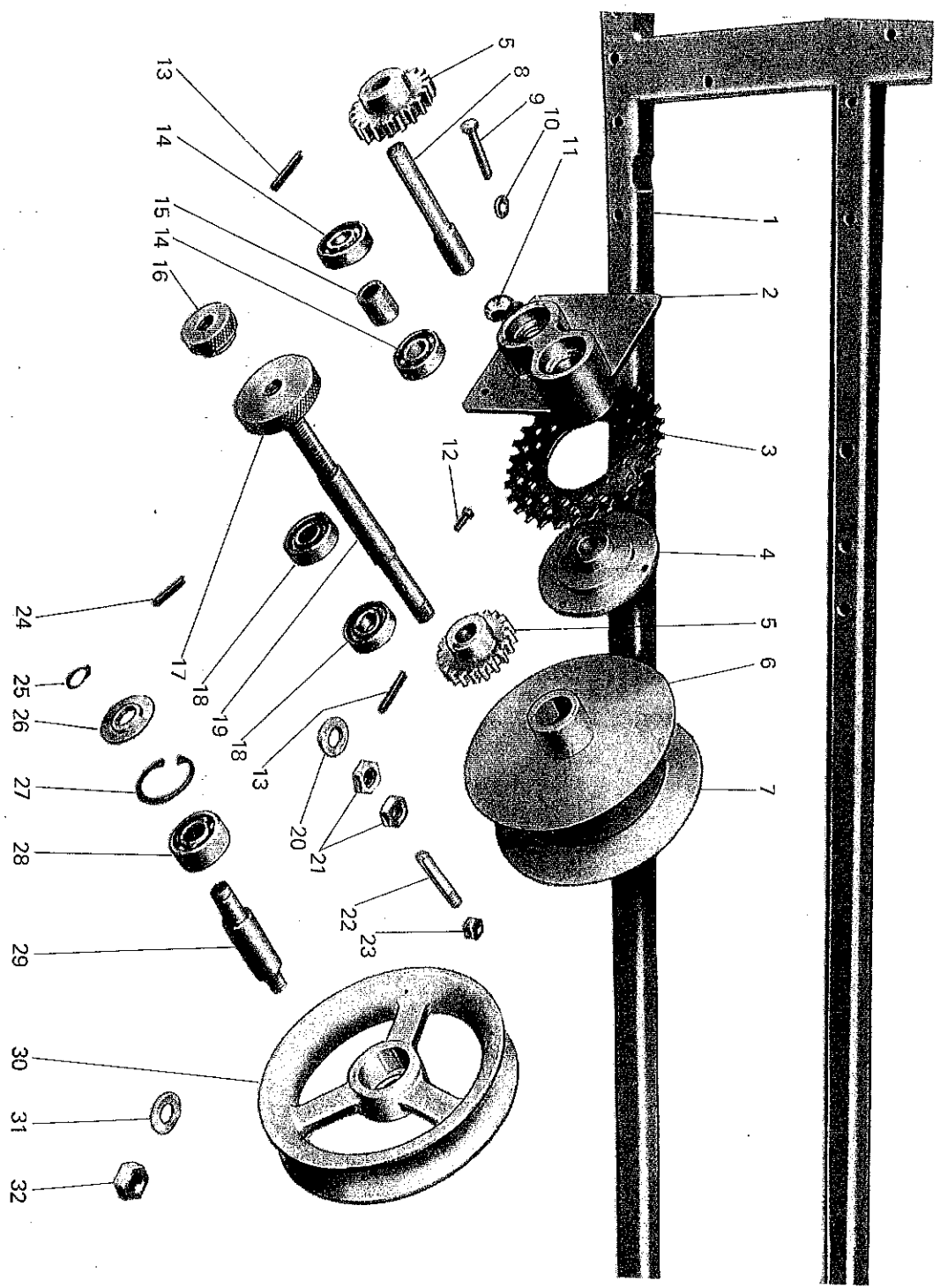


Fig.	PARTICOLARE	Qt.
1	08024	1
2	6001	2
3	08022	2
4	dado MA 6 UNI 5588	2
5	08025/1	1
6	rondella 6 UNI 1734	2
7	vite TE 6x50 UNI 5737	2
8	catena 1/2x1/8x7,8	1
9	giunto catena 1/2x7,8	1
10	08025	1
11	08020	1
12	spina elast. 4x30 DIN 1481	1

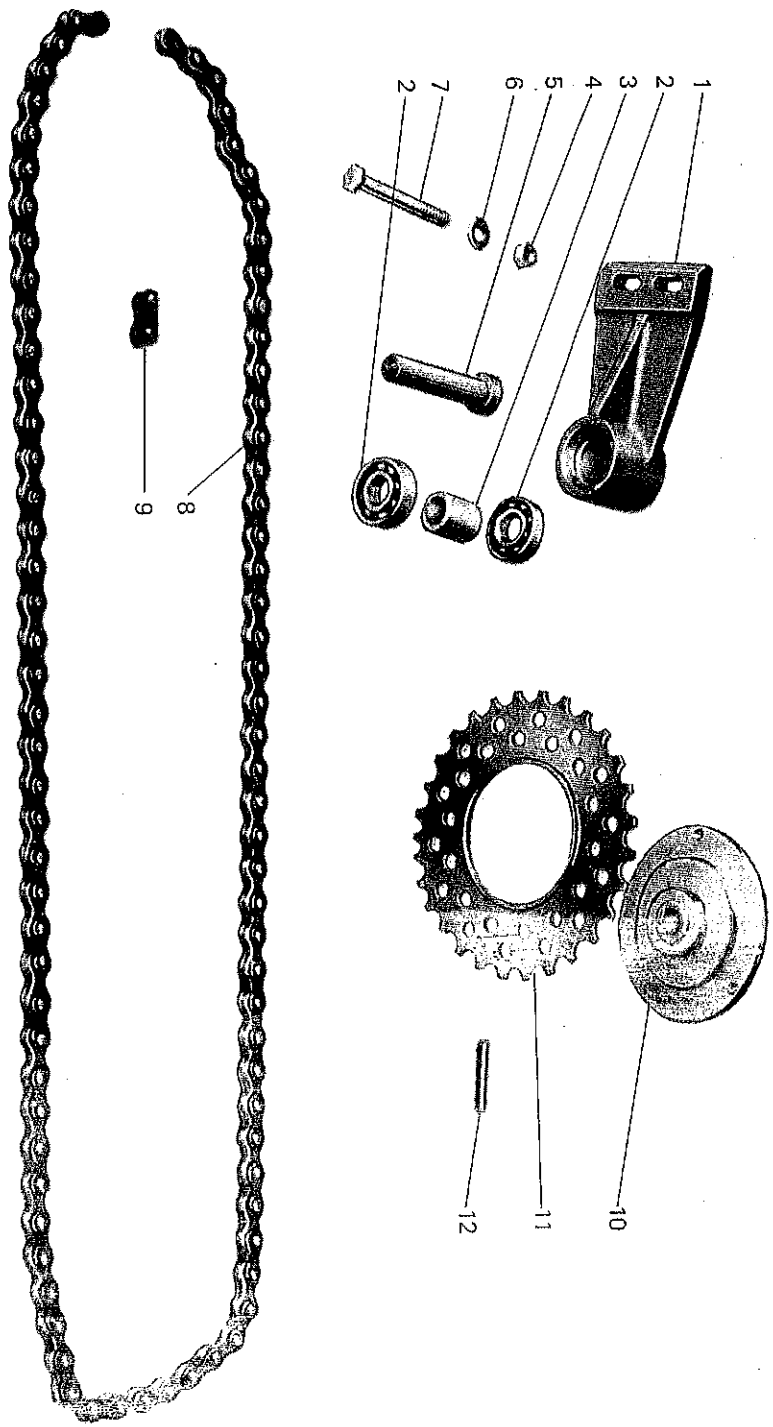


Fig.	PARTICOLARE	Qt.
1	08043	1
2	08041	1
3	dado MA 8 UNI 5588	2
4	08040	1
5	08050	1
6	08040/1	2
7	08038	1
8	08038/A	1

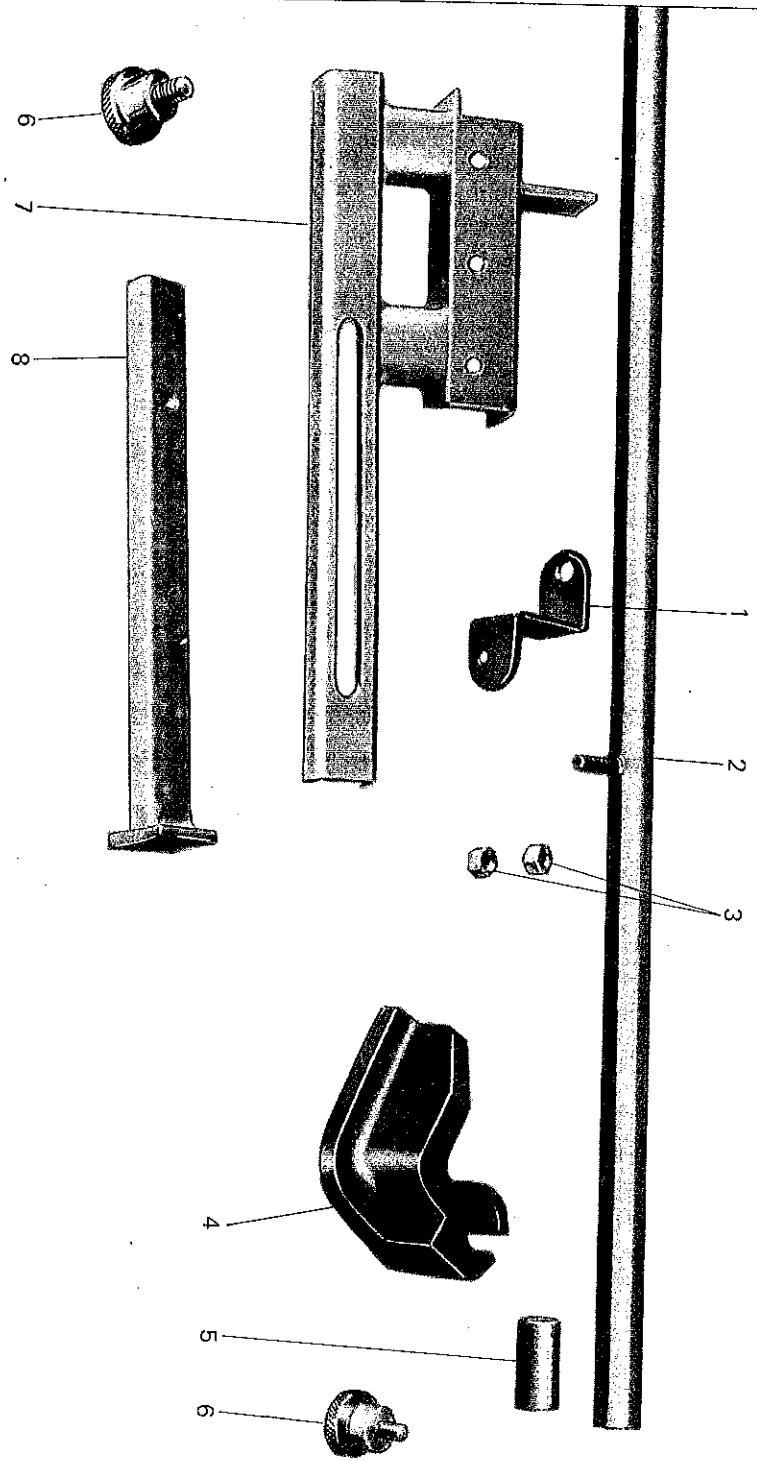


Fig.	PARTICOLARE	Qt.
1	08306	1
2	08005	1
3	dado M/A 8 UNI 5588	6
4	6000	4
5	rondella 10 UNI 1734	2
6	08303	2
7	08237	2
8	08005/A	1
9	08006	1
10	08304	2
11	rondella 8 UNI 1734	6
12	08305	2
13	08302	2
14	08305	1

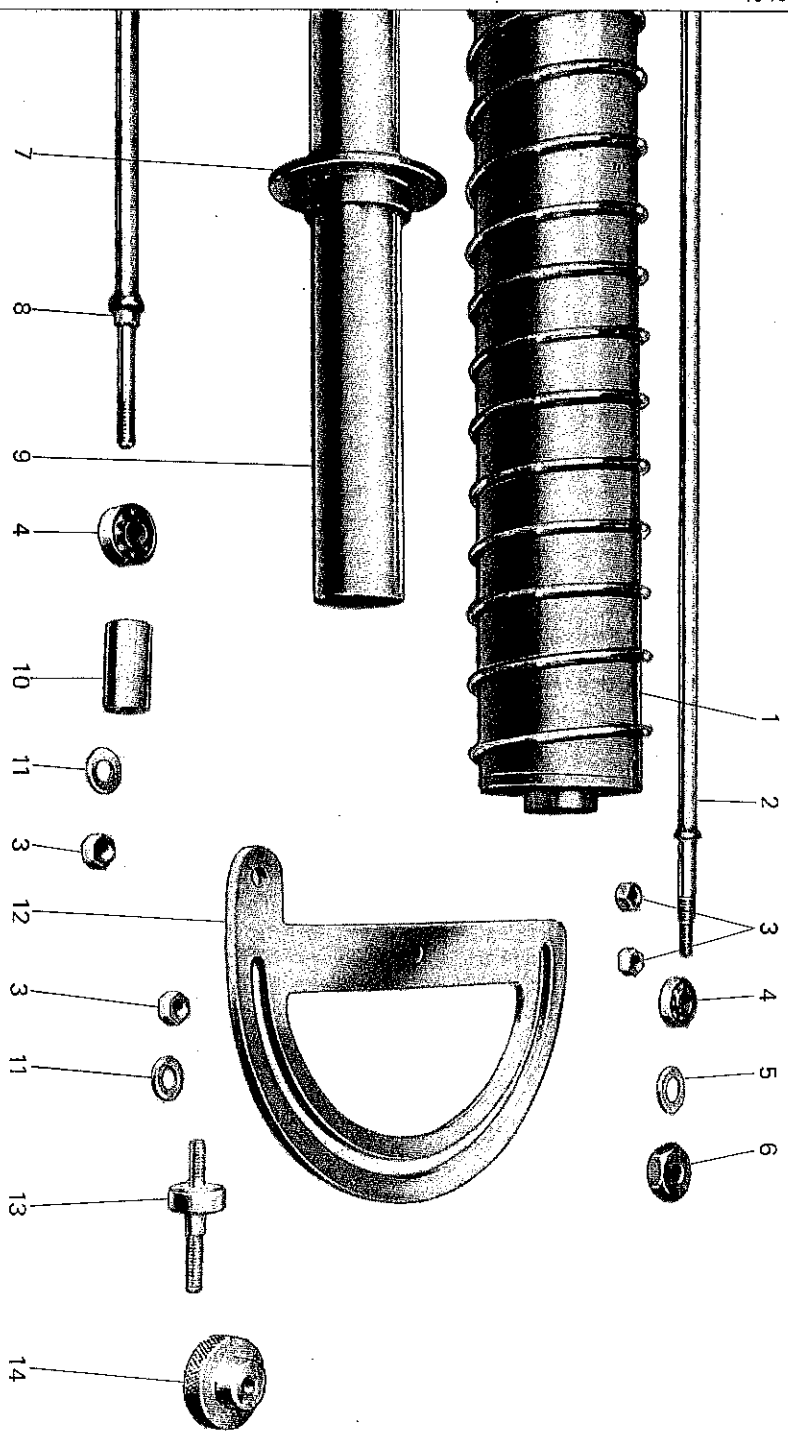


Fig.	PARTICOLARE	Qt.
1	08052	1
2	08053	2
3	08054	2
4	08028	4
5	rondella 8 UNI 1734	6
6	cuscinetto 608-2Z	4
7	rondella 6 UNI 3703	4
8	dado MA 6 UNI 5588	2
9	08051	1
10	vite TE 8x15 UNI 5739	2
11	08055	1
12	08057	1
13	vite TE 6x15 UNI 5739	2
14	08056	2
15	rondella 6 UNI 1734	2
16	spina elast.4x25 DIN 1481	1
17	08031	1

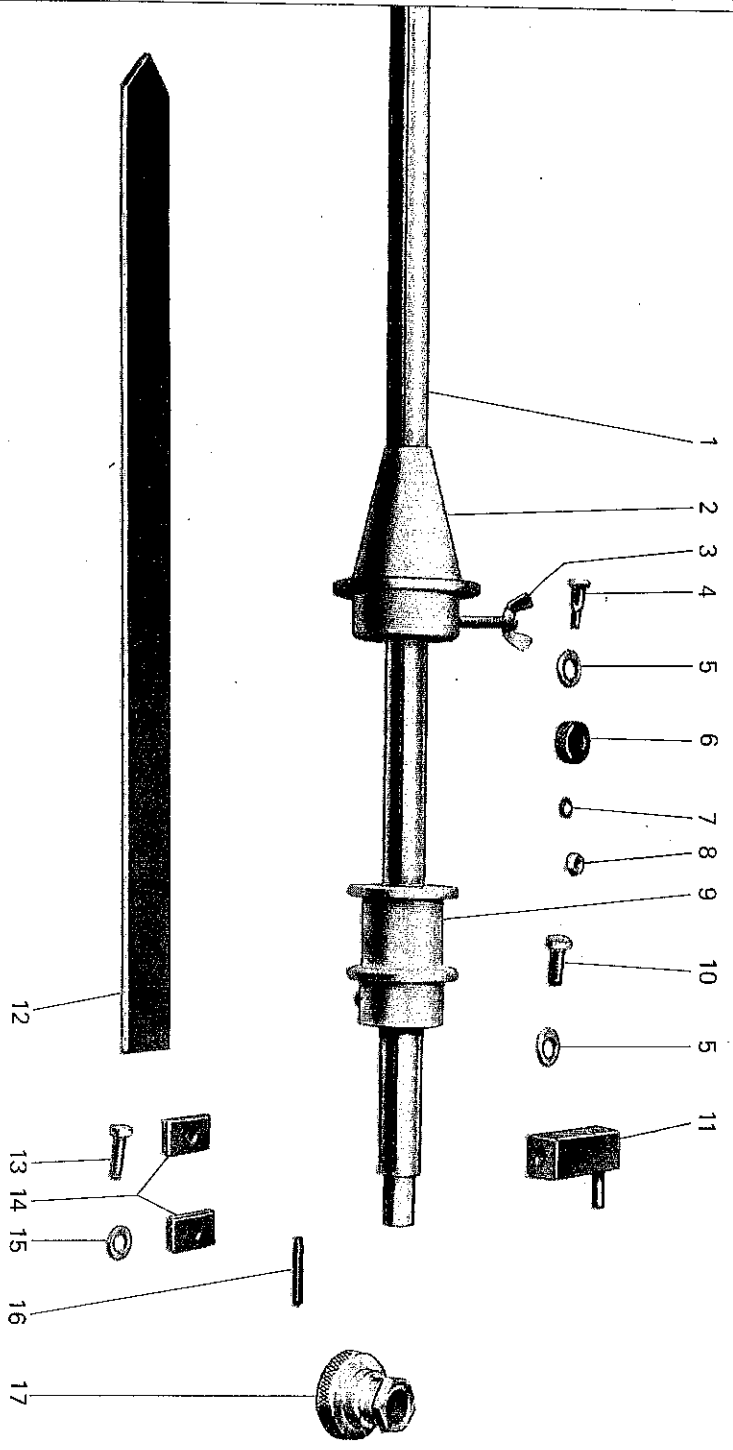


Fig.	PARTICOLARE	Qt.
1	08119	1
2	08118	1
3	09113	2
4	08049	1
5	08046	2
6	grower 5 UNI 1751	4
7	dado MA 5 UNI 5588	4
8	vite TC 5x35 UNI 240	4
9	dado MA 10 UNI 5588	2
10	rondella 10 UNI 1734	2

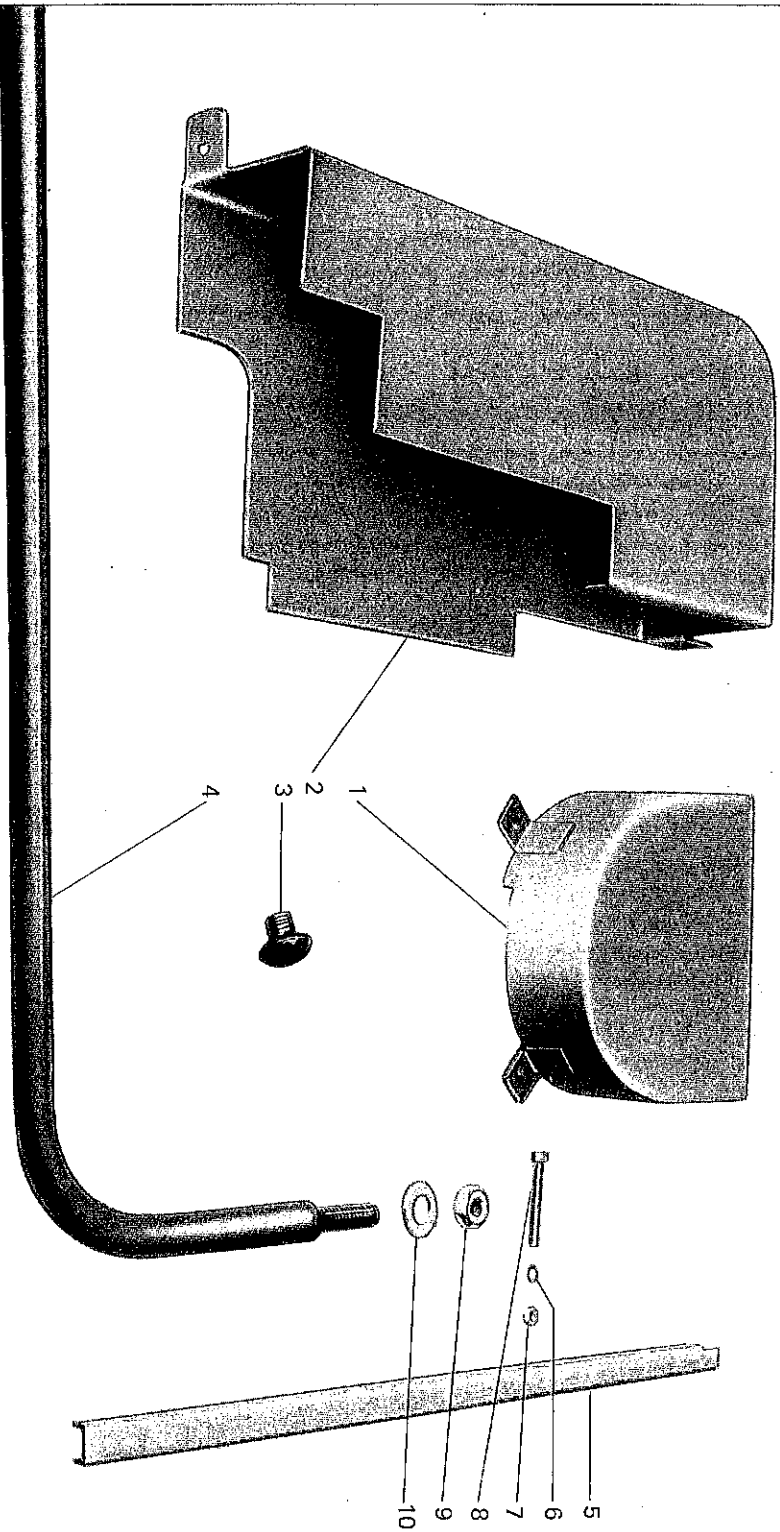
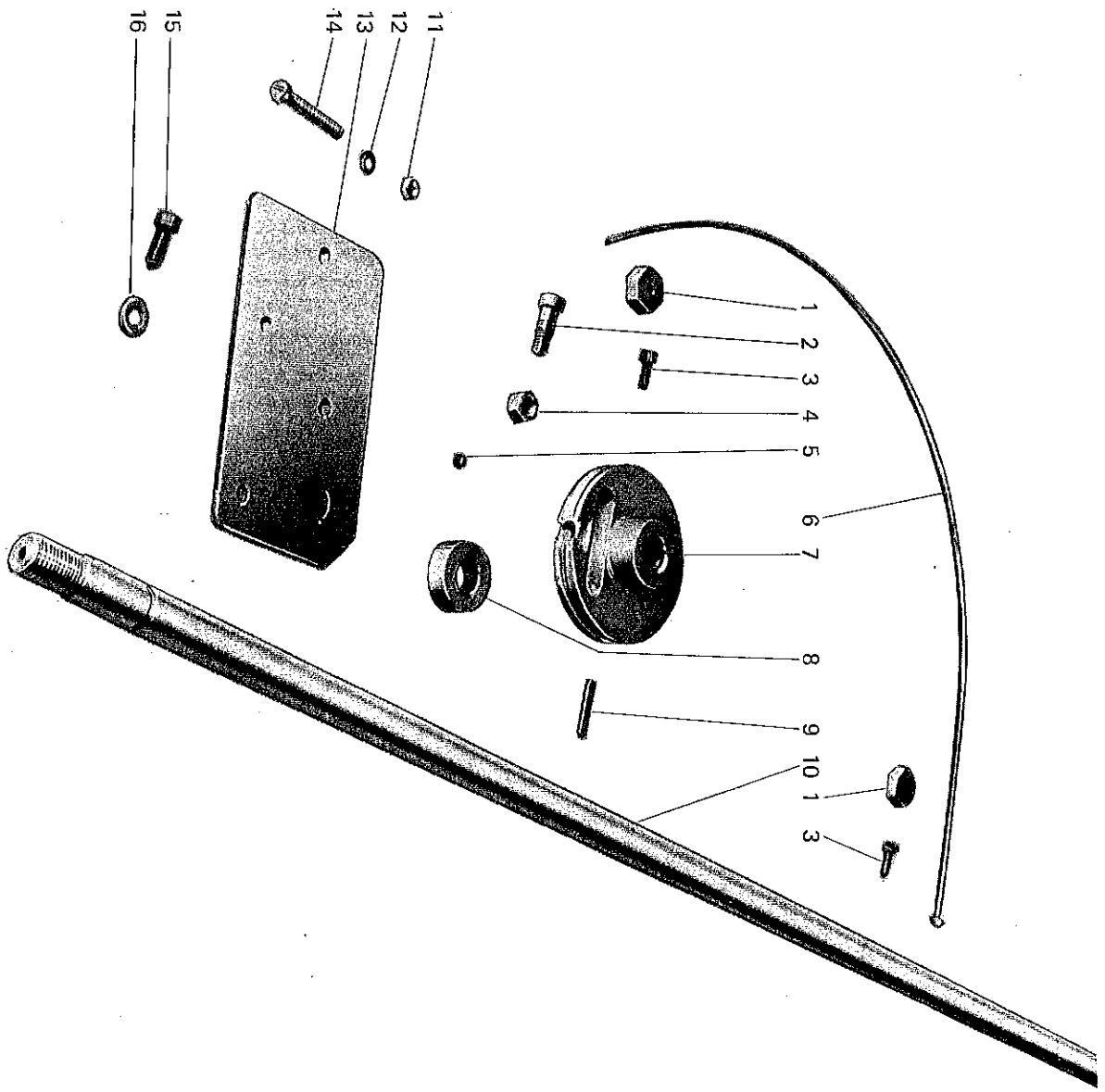




Fig.	PARTICOLARE	Qt.
1	08212	4
2	08102/1	2
3	vite MA 5x10 UNI 5931	4
4	dado MA 8 UNI 5589	2
5	grano CE 6x10 UNI 5927	2
6	08104	2
7	08102	2
8	08103	2
9	spina elast. 4x30DIN 1481	2
10	08101	1
11	dado MA 5 UNI 5588	6
12	rondella 5 UNI 1734	6
13	08100	2
14	vite TC 5x40 UNI 240	6
15	vite MA 6x12 UNI 5931	1
16	rondella 6 UNI 1734	1



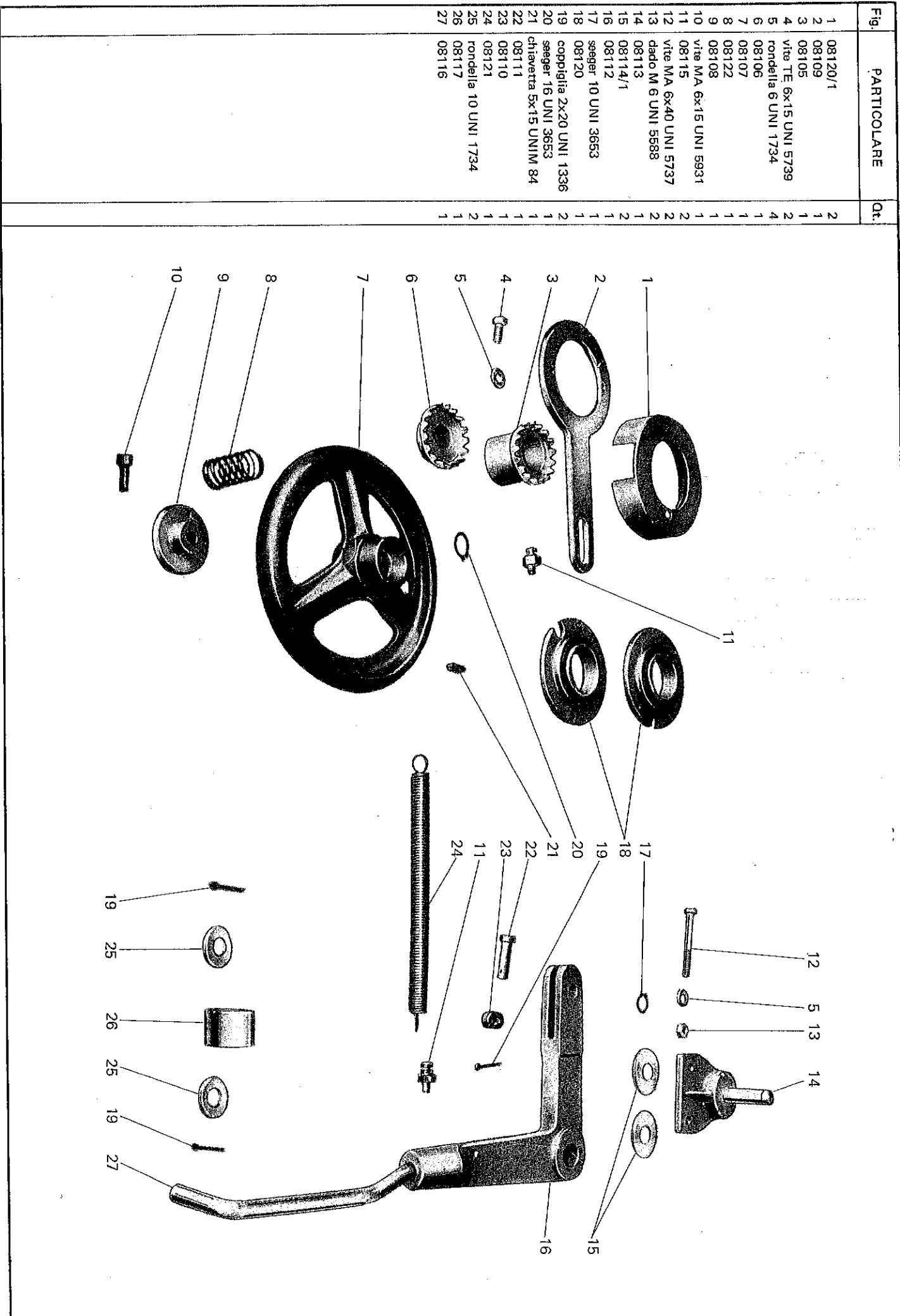


Fig.	PARTICOLARE	Qt.
1	08203	2
2	08204	2
3	08207	1
4	seeger 12 UNI 3653	2
5	dado M/A 8 UNI 5588	2
6	08205	4
7	rondella 8 UNI 1734	4
8	08206	1
9	08202	1
10	08208	1
11	08221	1
12	08242	2
13	08220	1
14	08241	1
15	08233	1
16	08232	2
17	spina elast. 4x35 DIN 1481	2
18	vite M/A 6x15 UNI 5931	6
19	08230	2

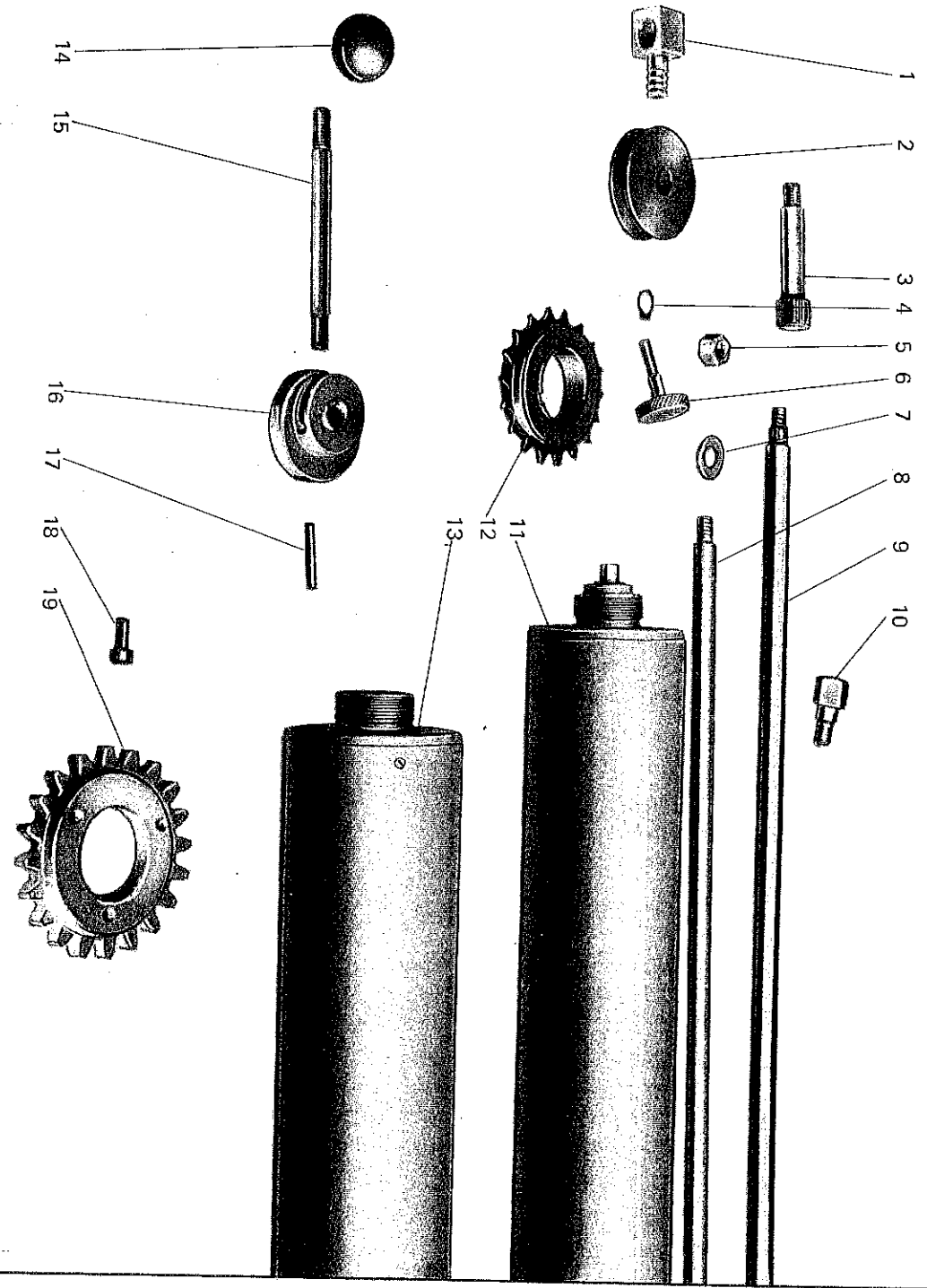


Fig.	PARTICOLARE	Qt.
1	dado MA 12 UNI 5589	2
2	08206	2
3	catena 1/2x1/8x7,8	2
4	giunto per catena	2
5	08236/B	2
6	08216	1
7	08244	1
8	08237	2
9	cuscinetto 6001	2
10	08217	1
11	08200	1
12	dado MA 4 UNI 5588	2
13	spina elast. 4x25 DIN 1481	2
14	08218	2
15	08245	2
16	rondella 4 UNI 1751	1
17	vite TS 4x20 UNI 260	2
18	dado MA 5 UNI 5588	2
19	rondella 5 UNI 1751	2
20	vite TG 5x35 UNI 240	2
21	08213	1
22	08214	1
23	08215	1
24	08201	1
25	08210	1
26	cuscinetto 6000	2
27	08243	2
28	08235	2
29	08235/1	2
30	seeger 10 UNI 3653	2
31	08234	2
32	08236/A	2
33	08209	2
34	vite TE 10x45 UNI 5739	1
35	dado MA 10 UNI 5589	1
36	coppiglia 2x20 UNI 1336	1
37	rondella 10 UNI 1734	1

