

1a EDIZIONE-EDITION 4/95 **n. 685**

MACCHINA FALDATRICE
LAYING-UP MACHINE
CHARIOT PLIEUR

EFN 928

E SOTTOCLASSI
AND SUB CLASS
ET SOUS-CLASSES

NELLA RICHIESTA DI PARTI DI RICAMBIO, CITARE SEMPRE IL SIMBOLO DEL PARTICOLARE ED IL MODELLO DELLA MACCHINA.

NELLA RICHIESTA DI COMPONENTI ELETTRICI ED ELETTRONICI PRIVI DI SIMBOLI, CITARE IL NOME DELLA CASA COSTRUTTRICE E LE CARATTERISTICHE STAMPIGLIATE SUL PEZZO.

NOTA: I SIMBOLI CHE TERMINANO CON .../S SONO SINISTRI MENTRE QUELLI CHE TERMINANO CON .../D SONO DESTRI

*WHEN ORDERING SPARE PARTS
ALWAYS STATE THE PARTS SYMBOL IN QUESTION AND THE MACHINE MODEL.*

*WHEN ORDERING ELECTRIC AND ELECTRONIC SPARE PARTS WITHOUT SYMBOLS STATE MANUFACTURING COMPANY
AND SPECIFICATION MARKED ON THE PARTS.*

NOTE THAT WHEN SYMBOLS WITH END .../S ARE LEFT AND THOSE WITH THE END .../D ARE RIGHT

A LA COMMANDE DES PIECES DETACHEES, INDIQUER TOUJOURS LE SYMBOLE DE LA PIECE ET LE MODELE DE LA MACHINE.

*A LA COMMANDE DES PIECES ELECTRIQUES ET ELECTRONIQUES SANS SYMBOLES, CITER LE NOM DU CONSTRUCTEUR
ET LES CARACTERISTIQUES IMPRIMEES SUR LA PIECE.*

NOTE: LES SYMBOLES QUI FINISSENT AVEC LA.../S SONT A GAUCHE PENDANT CEUX QUI FINISSENT AVEC .../D SONT A DROITE

INDEX

INDEX

SIMB.	TAV.	SIMB.	TAV.	SIMB.	TAV.	SIMB.	TAV.	SIMB.	TAV.	SIMB.	TAV.
RFN 10/130/G	6	RFN 12/406/T	8	RFN 14/298	14	RFN 24/651	13	RFN 28/403	7	RFN E/041	3
RFN 10/134	6	RFN 12/409/T	6	RFN 14/317	6	RFN 24/652	13	RFN 28/404	7	RFN E/041/1	3
RFN 10/136/T	6	RFN 12/411/T	8	RFN 14/368	3	RFN 24/655	13	RFN 28/405	7	RFN E/043	3
RFN 10/865	12	RFN 12/412/T	8	RFN 14/369	3	RFN 25/001	10	RFN 28/406	7	RFN E/045	3
RFN 10/867	12	RFN 12/414/T	8	RFN 14/370	3	RFN 25/002	10	RFN 28/407	7	RFN E/046	10
RFN 10/869	12	RFN 12/421/T	6	RFN 14/451	12	RFN 25/003	10	RFN 28/410	6	RFN E/046/1	10
RFN 12/001	1	RFN 12/422/T	6	RFN 14/452	2	RFN 25/004	10	RFN 28/411	7	RFN E/048	10
RFN 12/002	1	RFN 12/424/T	6	RFN 14/454/1	12	RFN 25/005	10	RFN 28/416	7	RFN E/063	1
RFN 12/018/1	2	RFN 12/425/T1	6	RFN 14/455	12	RFN 25/007	10	RFN 28/417	7	RFN E/063/1	1
RFN 12/050/1	2	RFN 12/426/T	6	RFN 14/456	12	RFN 25/008	10	RFN 28/418	8	RFN E/065	1
RFN 12/052	2	RFN 12/434/T	6	RFN 14/457	12	RFN 25/009	10	RFN 28/421	7	RFN Elettr.	7
RFN 12/053	2	RFN 12/435/T1	8	RFN 14/459	12	RFN 25/010	10	RFN 28/422	7	RFN F	15
RFN 12/055	2	RFN 12/435/T2	6	RFN 14/970	9	RFN 25/011	10	RFN 28/424	7	RFN Giunta	3
RFN 12/065	3	RFN 12/436/T	8	RFN 14/971	9	RFN 25/012	10	RFN 28/425	8	RFN K1	15
RFN 12/066/1	3	RFN 12/437/T1	6	RFN 14/972	9	RFN 25/013	10	RFN 28/426	6	RFN K2	15
RFN 12/066/2	3	RFN 12/438/T	8	RFN 14/973	9	RFN 25/014	10	RFN 28/427	7	RFN K3	15
RFN 12/068/1	1	RFN 12/439/T	8	RFN 14/977	9	RFN 25/016/3	9	RFN 28/428	7	RFN K4	15
RFN 12/069	1	RFN 12/516	8	RFN 14/980	9	RFN 25/017	10	RFN 28/430	6	RFN K5	15
RFN 12/071	1	RFN 13/008	4	RFN 14/981	9	RFN 25/019	10	RFN 28/432	8	RFN K6	15
RFN 12/072	1	RFN 13/009	4	RFN 14/983	9	RFN 25/020	10	RFN 28/433	8	RFN K7	15
RFN 12/074	1	RFN 13/010	4	RFN 14/984	9	RFN 25/021	10	RFN 28/437	7	RFN K8	15
RFN 12/075	1	RFN 13/034/1	1	RFN 14/985	9	RFN 25/023	10	RFN 28/438	7	RFN K9	15
RFN 12/076	1	RFN 14/019	1	RFN 14/986	9	RFN 25/024	10	RFN 28/442	8	RFN KOYO	10
RFN 12/085	3	RFN 14/020	1	RFN 14/987	9	RFN 25/025	10	RFN 28/443	8	RFN KOYO/25	3-11
RFN 12/085/4	3	RFN 14/047/1	4	RFN 14/988	9	RFN 25/026	5	RFN 28/445	6	RFN KR2	15
RFN 12/085/6	3	RFN 14/048	4	RFN 14/989	11	RFN 25/027	10	RFN 28/447	8	RFN M/10/244	8
RFN 12/086/A	3	RFN 14/076	4	RFN 14/990	11	RFN 25/029	10	RFN 28/449	7	RFN M/12/401	4-5-12
RFN 12/086/B	3	RFN 14/077	4	RFN 14/992	11	RFN 25/030	10	RFN 285/L100	10	RFN M/12/406	4
RFN 12/089	3	RFN 14/101/1	5	RFN 14/993	9	RFN 25/031/1	10	RFN 98/010	13	RFN M/20/005	11
RFN 12/090	4	RFN 14/104	5	RFN 14/994	11	RFN 25/032	10	RFN 98/234	5	RFN Molla T	7
RFN 12/094	4	RFN 14/106/2	5	RFN 14/995	9	RFN 25/033	10	RFN 98/309	5	RFN RR	14
RFN 12/094/2	4	RFN 14/107	5	RFN 200K	14	RFN 25/035	10	RFN 98/312	3	RFN RRV	14
RFN 12/094/4	4	RFN 14/109	5	RFN 20/002	11	RFN 25/037	10	RFN 98/316	5	RFN RRV M	14
RFN 12/123	4	RFN 14/110	5	RFN 20/002/1	11	RFN 25/038	10	RFN 98/415	5	RFN SM15	14
RFN 12/127/1	4	RFN 14/111	5	RFN 20/016	11	RFN 25/040	7	RFN 98/416	3	RFN SM16	14
RFN 12/129	4	RFN 14/112	5	RFN 20/018	11	RFN 25/041/1	5	RFN A1	15	RFN SP1	14
RFN 12/131/1	4	RFN 14/113	5	RFN 24/640	13	RFN 25/042	5	RFN CM/92	13	RFN SP2	14
RFN 12/194	13	RFN 14/119	5	RFN 24/641	13	RFN 25/043/C	1	RFN CM/94	13	RFN SP3	14
RFN 12/235	4	RFN 14/124	5	RFN 24/642/M	13	RFN 25/043/M	1	RFN CS/201	5	RFN SP5	14
RFN 12/252	4	RFN 14/124/1	5	RFN 24/643/M	13	RFN 25/044	5	RFN CS/6000/2RS	6-8	RFN SP6	14
RFN 12/253	4	RFN 14/280/G	14	RFN 24/645	13	RFN 270/L100	10	RFN CS/6002/2RS	6	RFN SP7	14
RFN 12/254	2-3	RFN 14/285	14	RFN 24/646	13	RFN 28/046/1	7	RFN CS/6004	2	RFN SP8	14
RFN 12/401/T	8	RFN 14/293	14	RFN 24/647	13	RFN 28/400	6	RFN CS/6202	3	RFN SP9	14
RFN 12/403/T	8	RFN 14/294	14	RFN 24/648	13	RFN 28/400/M	7	RFN E/006	10	RFN SP10	14
RFN 12/405/T	8	RFN 14/296/1	14	RFN 24/650	13	RFN 28/401	7	RFN E/016	5	RFN SP11	14

SIMBOLOGIA E DESCRIZIONE COMPONENTI ELETTRICI EFN 928

A 1	Scheda SF 176C	SM 9	Micro Tastatore Salita
A 2	Portascheda SF 177B	SM 10	Micro Arresto Tagliatore SX
A 3	Portascheda Emergenza	SM 11	Micro Arresto Tagliatore DX
F	Fusibile 5A	SM 12	Micro Sicurezza Caricatore
G 1	Tachimetrica Motore Principale	SM 13	Micro Arresto Salita Caricatore
G 2	Tachimetrica Motore Cinghia	SM 14	Micro Arresto
G 3	Tachimetrica Motore Rullo Verde	SM 15	Micro Manopola Avanti
G 4	Tachimetrica Motore Rulli Taglio	SM 16	Micro Manopola Indietro
G 5	Encoder XCH638-5-B-CM-R	SP 1	Pulsante Inserzione
H 1	Luce Inserzione	SP 2	Selettore Fotocellula
H 2	Luce Spia Marcia	SP 3	Selettore Salita Discesa
H 3	Luce Spia Fotocellula	SP 4	Selettore Carico Scarico Caricatore
K 1	Teleruttore Emergenza	SP 5	Pulsante Affilatura
K 2	Teleruttore Allineamento DX	SP 6	Pulsante Arresto
K 3	Teleruttore Allineamento SX	SP 7	Selettore Taglio Manuale
K 4	Teleruttore Salita	SP 8	Selettore Taglio Zig Zag
K 5	Teleruttore Discesa	SP 9	Selettore Manuale Automatico
K 6	Teleruttore Tagliatore DX	SP 10	Selettore Ritorno Veloce
K 8	Teleruttore Salita Caricatore	SP 11	Pulsante Marcia
K 9	Teleruttore Discesa Caricatore	SP 12	Selettore Svolge Riavvolge
KF 1	Fotocellula Allineamento DX	SP 13	Pulsante Reset Ciclo
KF 2	Fotocellula Allineamento SX	SP 14	Selettore Inversione Stesura
KF 3	Fotocellula Fine Pezza	SP 16	Pulsante Emergenza
KR 2	Scheda Emergenza	T1 VA	Trasformatore TM 125VA P110
M 1	Motore Principale	TT	Trasformatore 380-110V 1500VA
M 2	Motore Rotazione Rullo Verde	U 1	Scheda Motore Principale
M 3	Motore Rotazione Cinghie	U 2	Scheda Motore Alimentazione Rullo Verde
M 4	Motore Rotazione Rulli Taglio	U 3	Scheda Motore Alimentazione Cinghia
M 5	Motore Rotazione Lama	U 4	Scheda Motore Rulli Taglio
M 6	Motore Rotazione Taglio	U 5	Raddrizzatore Trifase Eccitazione MP
M 7	Motore Allineamento Fotocellula	U 6	Raddrizzatore Motore Lama Taglio
M 8	Motore Salita Discesa	U 7	Raddrizzatore Magnete
M 9	Motore Caricatore	U 8	Alimentatore Freno Magnetico
RR	Reostato Regolazione Velocità Rulli	XA	Morsetti Apparecchiatura
RRV	Reostato Regolazione Velocità Automatica	XC	Connettore Computer
RRVM	Reostato Regolazione Velocità Manuale	XPE	Connettore Parte Elettronica
SM 1	Micro Emergenza	XPS	Connettore Portaschede SF176C CM92
SM 4	Arresto Allineamento Fotocellula DX	XRT	Connettore Rulli Tagliatore
SM 5	Arresto Allineamento Fotocellula SX	XT	Connettore Tagliatore
SM 6	Micro Arresto Salita	Y 1	Freno Magnetico
SM 7	Micro Arresto Discesa	Y 20	Elettrocalamita V110
SM 8	Micro Emergenza Pedana		

SYMBOLS AND ELECTRIC DEVICES DESCRIPTION EFN 928

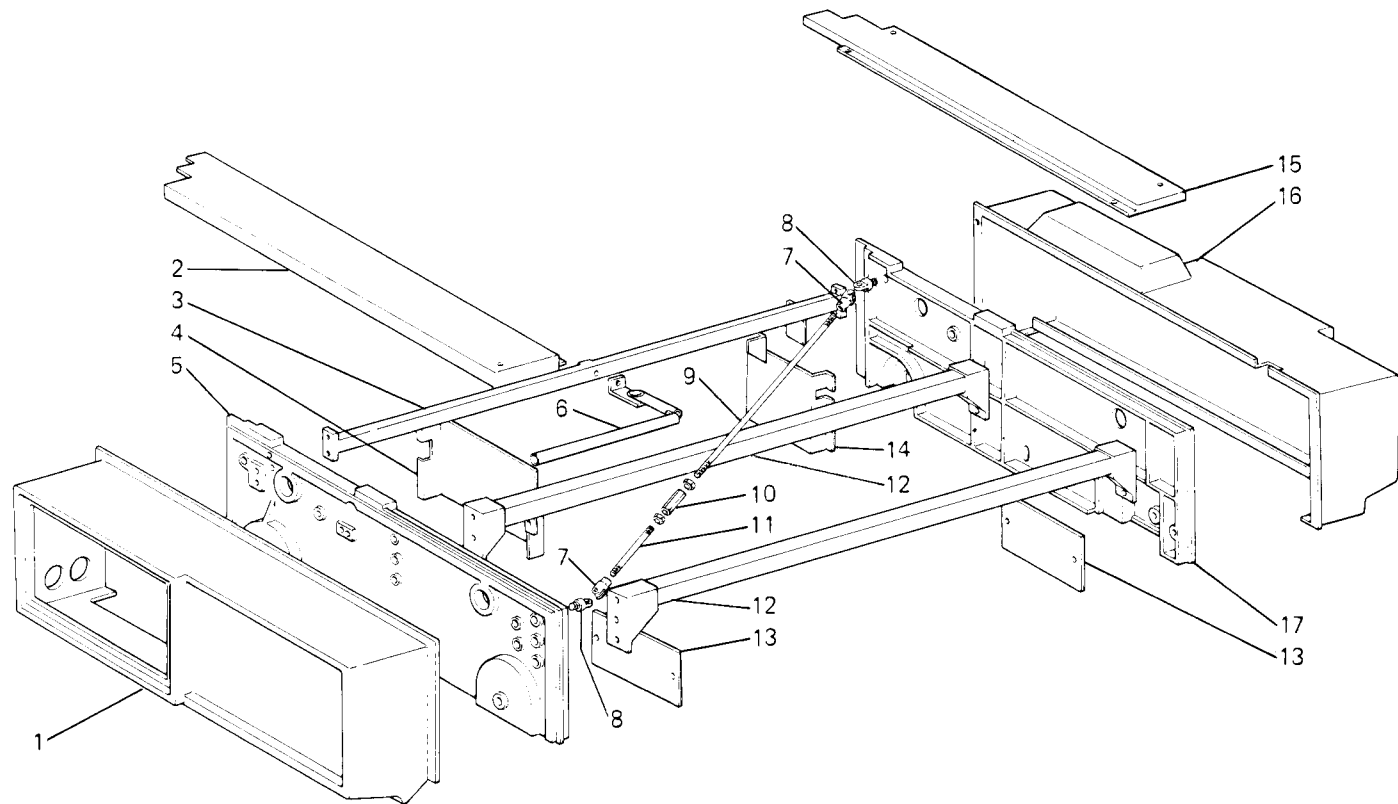
A 1	Card SF 176C	SM 9	Slope Touching Micro
A 2	Card-Case SF 177B	SM 10	SX Cutter Stop Micro
A 3	Emergency Card-Case	SM 11	DX Cutter Stop Micro
F	Fuse 5A	SM 12	Loader Security Micro
G 1	Tachimetre Main Motor	SM 13	Loader Slope Stop Micro
G 2	Tachimetre Belts Motor	SM 14	Stop Micro
G 3	Tachimetre Green Roller Motor	SM 15	On knob Micro
G 4	Tachimetre Cut Rollers Motor	SM 16	Back Knob Micro
G 5	XCH638-5-B-CM-R Encoder	SP 1	Insertion Push Button
H 1	Led Insertion	SP 2	Photocell Selector
H 2	Led Forward Gear	SP 3	Selector Slope Descent
H 3	Led Photocell	SP 4	Selector Loader Loading-Unloading
K 1	Emergency Remote Control Switch	SP 5	Sharpening Push Button
K 2	DX Alignment Control Switch	SP 6	Push Button Stop
K 3	SX Alignment Control Switch	SP 7	Manual Cut Selector
K 4	Slope Remote Control Switch	SP 8	Zig Zag Cut Selector
K 5	Descent Remote Control Switch	SP 9	Selector Manual-Automatic
K 6	DX Cutter Control Switch	SP 10	Backward Fast Selector
K 8	Loader Slope Remote Control Switch	SP 11	On Push Button
K 9	Loader Descent Remote Control Switch	SP 12	Selector Unwinding-Re-Winding
KF 1	DX Alignment Photocell	SP 13	Cicle Reset Push Button
KF 2	SX Alignment Photocell	SP 14	Spreading Inversion Selector
KF 3	End Fabric Photocell	SP 16	Push Button Emergency
KR 2	Emergency Card	T1 VA	TM Transformer
M 1	Main Motor	TT	380-110V 1500VA Transformer
M 2	Green Roller Rotation Motor	U 1	Main Motor Card
M 3	Belts Rotation Motor	U 2	Green Roller Feeding Motor Card
M 4	Cut Rollers Rotation Motor	U 3	Belt Alimentation Motor Card
M 5	Blada Rotation Motor	U 4	Rollers Cut Motor Card
M 6	Cut Rotation Motor	U 5	MP Excitation Three Phase Rectifier
M 7	Photocell Alignment Motor	U 6	Blada Cut Motor Rectifier
M 8	Slope-Descent Motor	U 7	Magnet Rectifier
M 9	Loader Motor	U 8	Magnetic Bracket Feeding
RR	Rollers Speed Regulation Rheostat	XA	Device Clamps
RRV	Automatic Speed Regulation Rheostat	XC	Computer Connector
RRVM	Manual Speed Regulation Rheostat	XPE	Electronic Part Connector
SM 1	Emergency Micro	XPS	SF 176C CM92 Cards-Case Connector
SM 4	DX Photocell Alignment Stop	XRT	Cutter Rollers Connector
SM 5	SX Photocell Alignment Stop	XT	Cutter Connector
SM 6	Slope Micro Stop	Y 1	Magnetic Bracket
SM 7	Descent Micro Stop	Y20	V110 Electromagnet
SM 8	Emergency Board Micro		

SYMBOLOGIE ET DESCRIPTION DISPOSITIFS ELECTRIQUES EFN 928

A 1	Fiche SF 176C	SM 9	Micro Tâteur Montée
A 2	Porte fiche SF 177B	SM 10	Micro Arrêt Coupeur SX
A 4	Porte fiche d'Urgence	SM 11	Micro Arrêt Coupeur SX
F	Fusible 5A	SM 12	Micro Sécurité Chargeur
G 1	Tachimetre Moteur Principal	SM 13	Micro Arrêt Montée Chargeur
G 2	Tachimetre Moteur Courroie	SM 14	Micro Arrêt
G 3	Tachimetre Moteur Rouleau Vert	SM 15	Micro Poignée Avant
G 4	Tachimetre Moteur Rouleau de Coupe	SM 16	Micro Poignée Arrière
G 5	Encoder XCH638-5-B-CM-R	SP 1	Poussoir Insertion
H 1	Lampe de Insertion	SP 2	Selecteur Photocellule
H 2	Lampe témoin Marche	SP 3	Selecteur Montée Descente
H 3	Lampe témoin Photocellule	SP 4	Selecteur Chargement Dechargement Chargeur
K 1	Télérupteur Urgence	SP 5	Poussoir Affûteur
K 2	Télérupteur Allignement DX	SP 6	Poussoir Arrêt
K 2	Télérupteur Allignement SX	SP 7	Selecteur Coupe Manuelle
K 4	Télérupteur Montée	SP 8	Selecteur Coupe Zig Zag
K 5	Télérupteur Descente	SP 9	Selecteur Manuel Automatique
K 6	Télérupteur Coupeur DX	SP 10	Selecteur Rentrée avec Vitesse
K 8	Télérupteur Montée Chargeur	SP 11	Poussoir Marche
K 9	Télérupteur Descente Chargeur	SP 12	Selecteur Déroulement-Enroulement
KF 1	Photocellule Allignement DX	SP 13	Poussoir Reset Cicle
KF 2	Photocellule Allignement SX	SP 14	Selecteur Inversion Matélassage
KF 3	Photocellule Fin Tissu	SP 16	Poussoir Urgence
KR 2	Fiche d'Urgence	T1 VA	Transformateur TM 125VA P110
M 1	Moteur Principal	TT	Transformateur 380-110V 1500VA
M 2	Moteur Rotation Rouleaux Vert	U 1	Fiche Moteur Principal
M 3	Moteur Rotation Courroie	U 2	Fiche Moteur Alimentation Rouleau Vert
M 4	Moteur Rotation Rouleau de Coupe	U 3	Fiche Moteur Courroie Alimentation
M 5	Moteur Rotation Couteau	U 4	Fiche Moteur Rouleaux de Coupe
M 6	Moteur Rotation Coupe	U 5	Redresseur Triphase Excitation MP
M 7	Moteur Allignement Photocellule	U 6	Redresseur Moteur Couteau de Coupe
M 8	Moteur Montée Descente	U 7	Redresseur Magnete
M 9	Moteur Chargeur	U 8	Alimentateur Frein Magnetique
RR	Rhéostat Regulation Vitesse Rouleaux	XA	Bornes Appareillage
RRV	Rhéostat Regulation Vitesse Automatique	XC	Connecteur Computer
RRVM	Rhéostat Regulation Vitesse Manuelle	XPE	Connecteur Electronique
SM 1	Micro d'Urgence	XPS	Connecteur Porte fiches SF 176C CM92
SM 4	Arrêt Allignement Photocellule DX	XT	Connecteur Rouleaux Coupeur
SM 5	Arrêt Allignement Photocellule SX	XT	Connecteur Coupeur
SM 6	Micro Arrêt Montée	Y 1	Freinage Magnetique
SM 7	Micro Arrêt Descente	Y 20	Electromagnete V110
SM 8	Micro Urgence Estrade		

Rim® TAV. 1

Fig. N.	Part. N. Piece N.	Qt.
1	RFN E/063	1
2	RFN 25/043/C	1
3	RFN 14/019	1
4	RFN 13/034/1	1
5	RFN 12/001	1
6	RFN E/065	1
7	RFN 12/072	2
8	RFN 12/071	2
9	RFN 12/076	1
10	RFN 12/074	1
11	RFN 12/075	1
12	RFN 14/020	2
13	RFN 12/069	2
14	RFN 12/068/1	1
15	RFN 25/043/M	1
16	RFN E/063/1	1
17	RFN 12/002	1



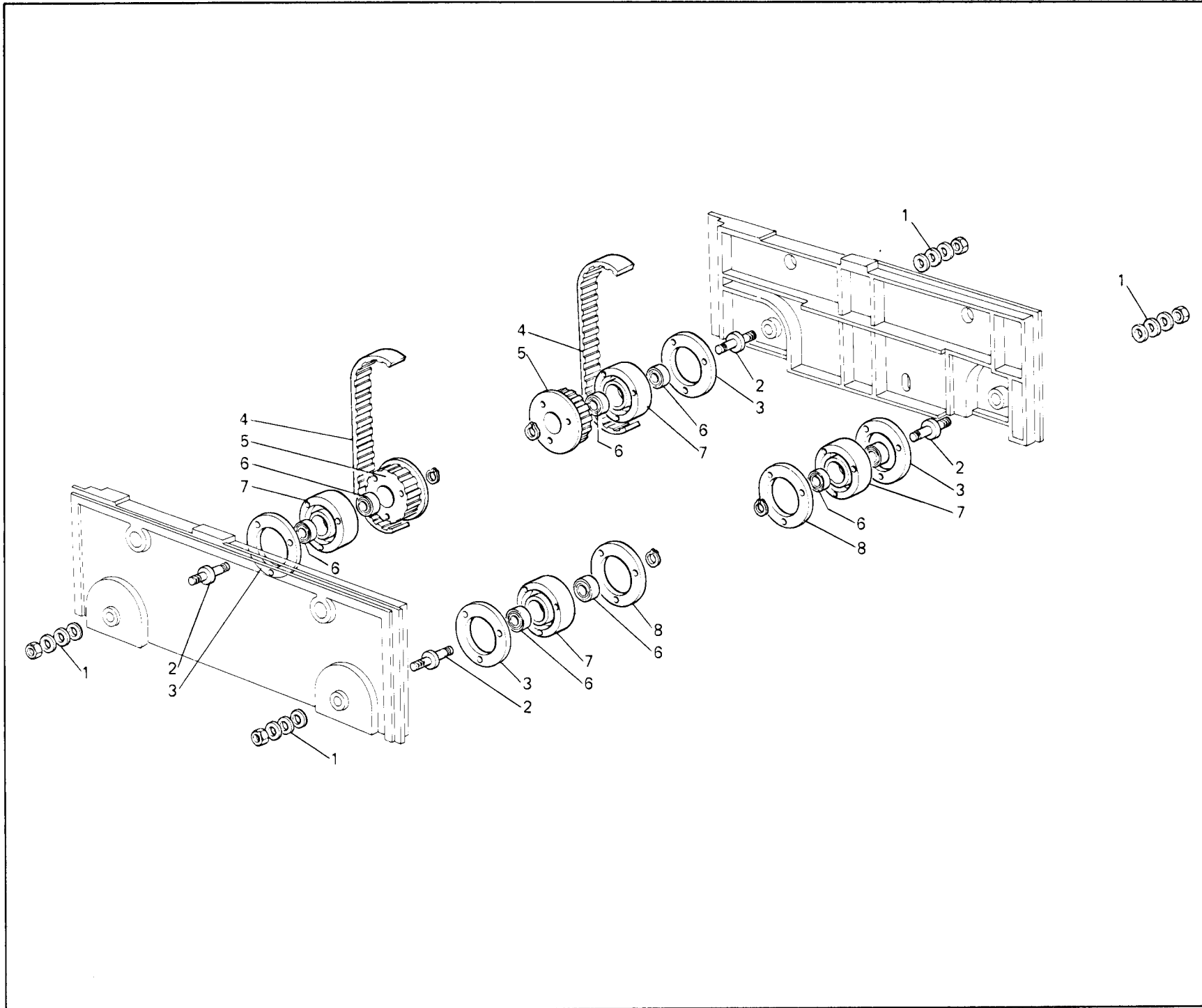
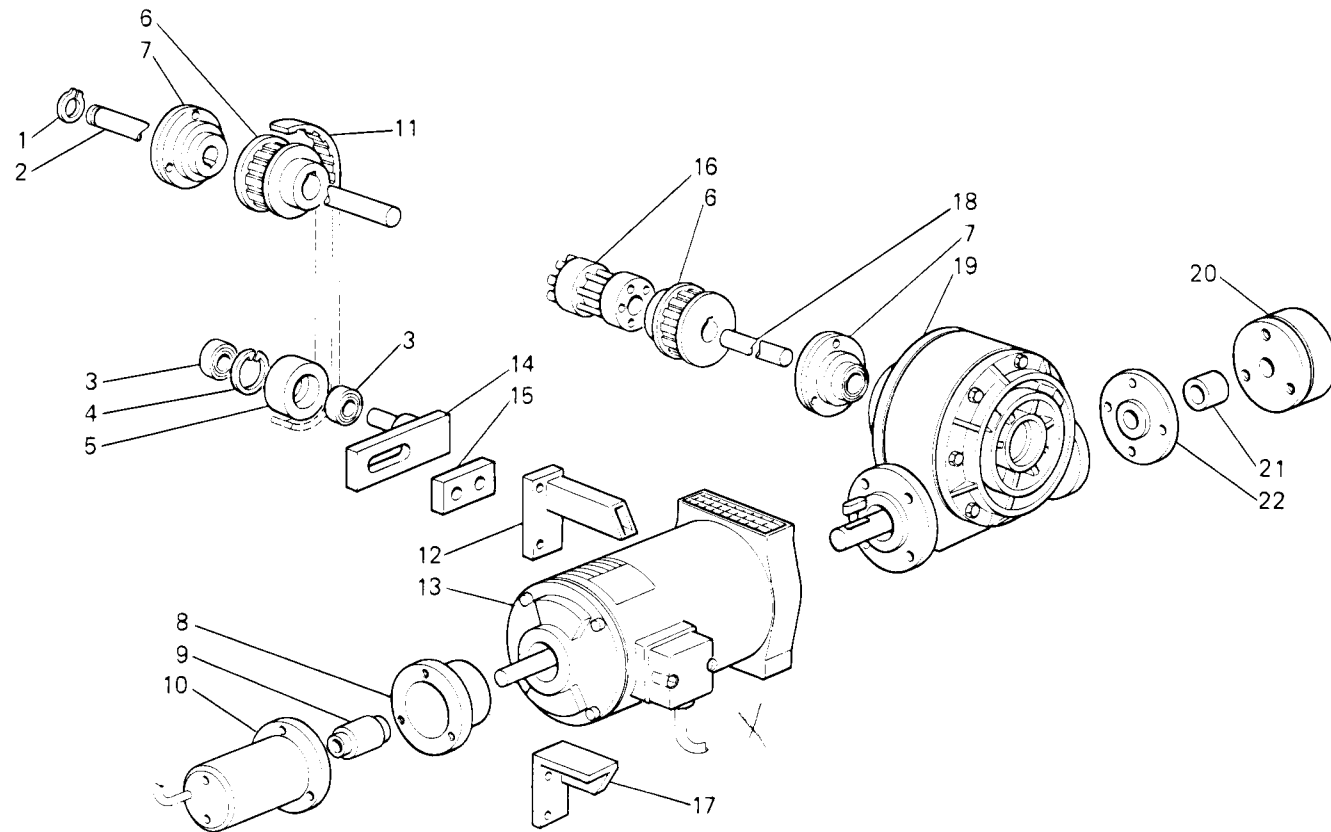


Fig. N.	Part. N. Piese N.	Qt.
1	RFN 12/055	12
2	RFN 14/452	4
3	RFN 12/018/1	4
4	RFN 12/254	2
5	RFN 12/053	2
6	RFN CS/6004	8
7	RFN 12/050/1	4
8	RFN 12/052	2

Rim® TAV. 3

Fig. N.	Part. N. Pezce N.	Qt.
1	RFN 98/312	1
2	RFN 12/086/B	1
3	RFN CS/6202	2
4	RFN 98/416	1
5	RFN 12/065	1
6	RFN 12/089	2
7	RFN KOYO/25	2
8	RFN 14/368	1
9	RFN E/041/1	1
10	RFN E/041	1
11	RFN 12/254	1
12	RFN 12/085/6	1
13	RFN E/045	1
14	RFN 12/066/1	1
15	RFN 12/066/2	1
16	RFN Giunto	1
17	RFN 12/085/4	1
18	RFN 12/086/A	1
19	RFN 12/085	1
20	RFN E/043	1
21	RFN 14/370	1
22	RFN 14/369	1

Spazzole - Brushes - Balais de Charbon RFN 12/303/1



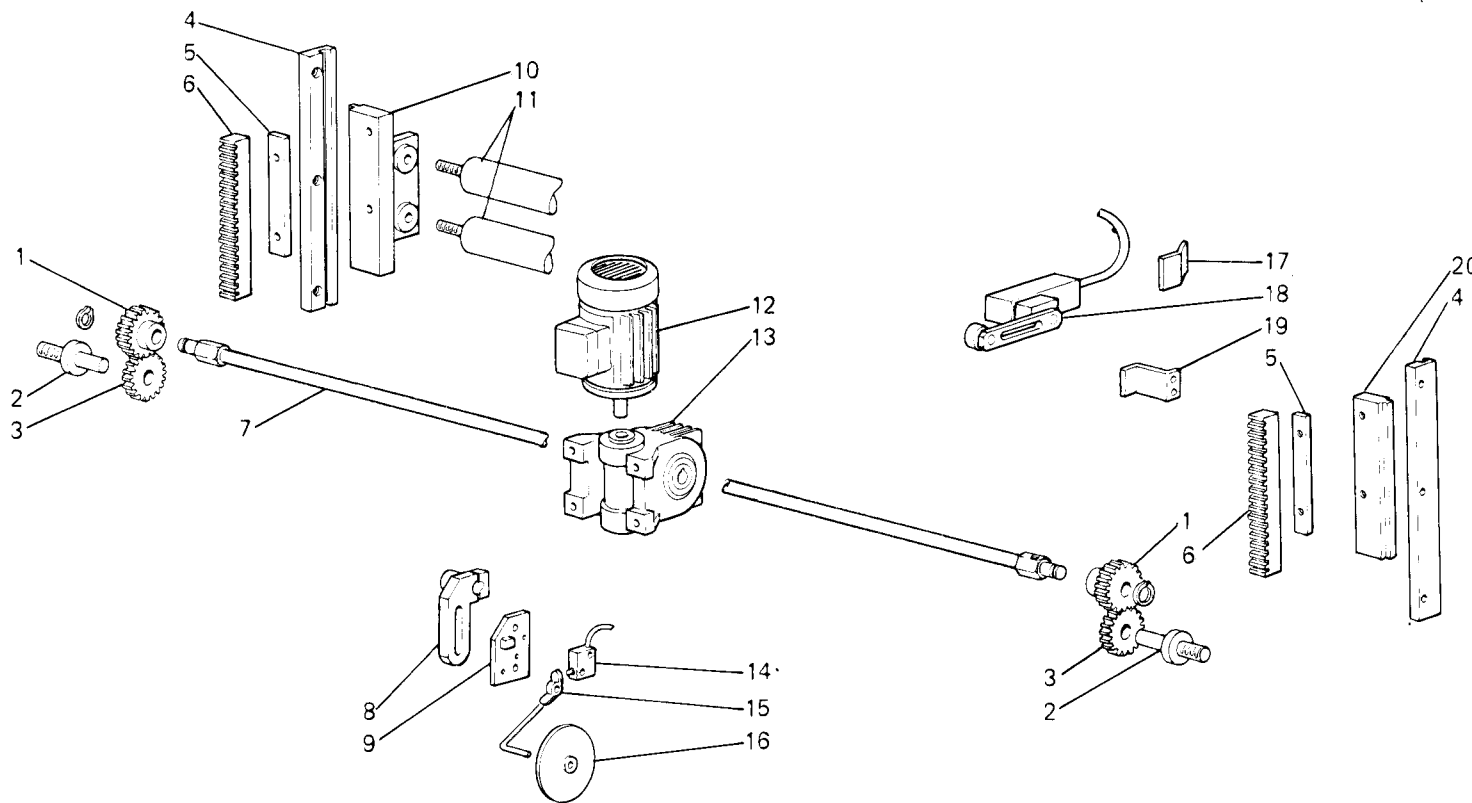
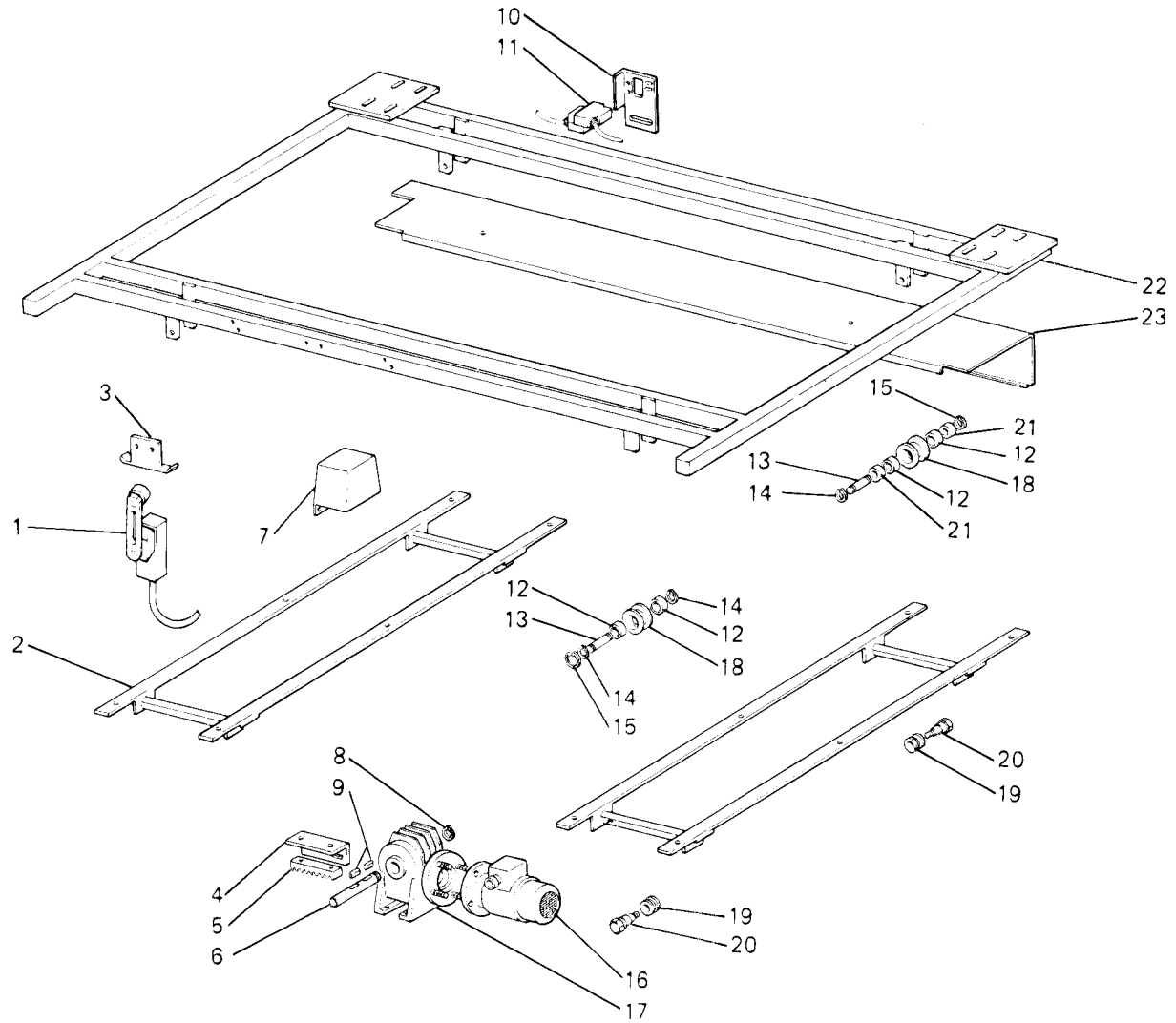


Fig. N.	Part. N. Piece N.	Qt.
1	RFN 12/094	2
2	RFN 12/094/4	2
3	RFN 12/094/2	2
4	RFN 12/123	2
5	RFN 14/048	2
6	RFN 14/047/1	2
7	RFN 12/090	1
8	RFN 12/127/1	1
9	RFN 12/131/1	1
10	RFN 13/008	1
11	RFN 13/010	2
12	RFN 12/252	1
13	RFN 12/253	1
14	RFN M/12/406	1
15	RFN 12/129	1
16	RFN 12/235	1
17	RFN 14/076	1
18	RFN XCK-S	2
19	RFN 14/077	1
20	RFN 13/009	1

Rim® TAV. 5

Fig. N.	Part. N. Piecè N.	Qt.
1	RFN XCK-S	4
2	RFN 14/101/1	2
3	RFN 14/119	1
4	RFN 14/106/2	1
5	RFN 14/107	1
6	RFN 14/104	1
7	RFN 25/042	1
8	RFN 98/316	1
9	RFN 98/234	2
10	RFN 25/041/1	1
11	RFN E/016	1
12	RFN CS/201	4
13	RFN 14/110	2
14	RFN 98/309	3
15	RFN 98/415	2
16	RFN 14/124/1	1
17	RFN 14/124	1
18	RFN 14/109	2
19	RFN 14/112	2
20	RFN 14/111	2
21	RFN 14/113	2
22	RFN 25/026	1
23	RFN 25/044	1



Spazzole - Brushes - Balais de Carbon RFN 12/303/2

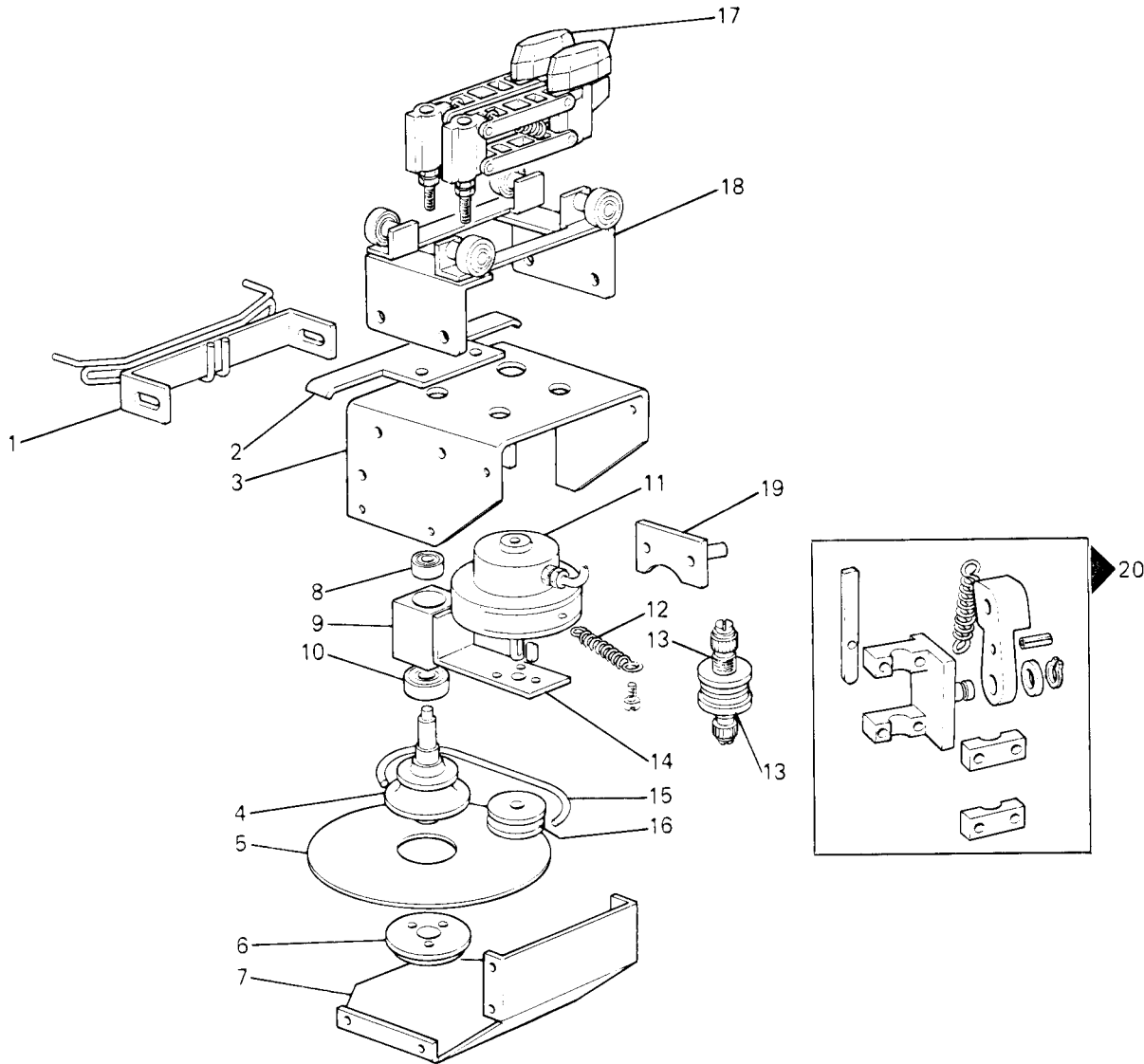
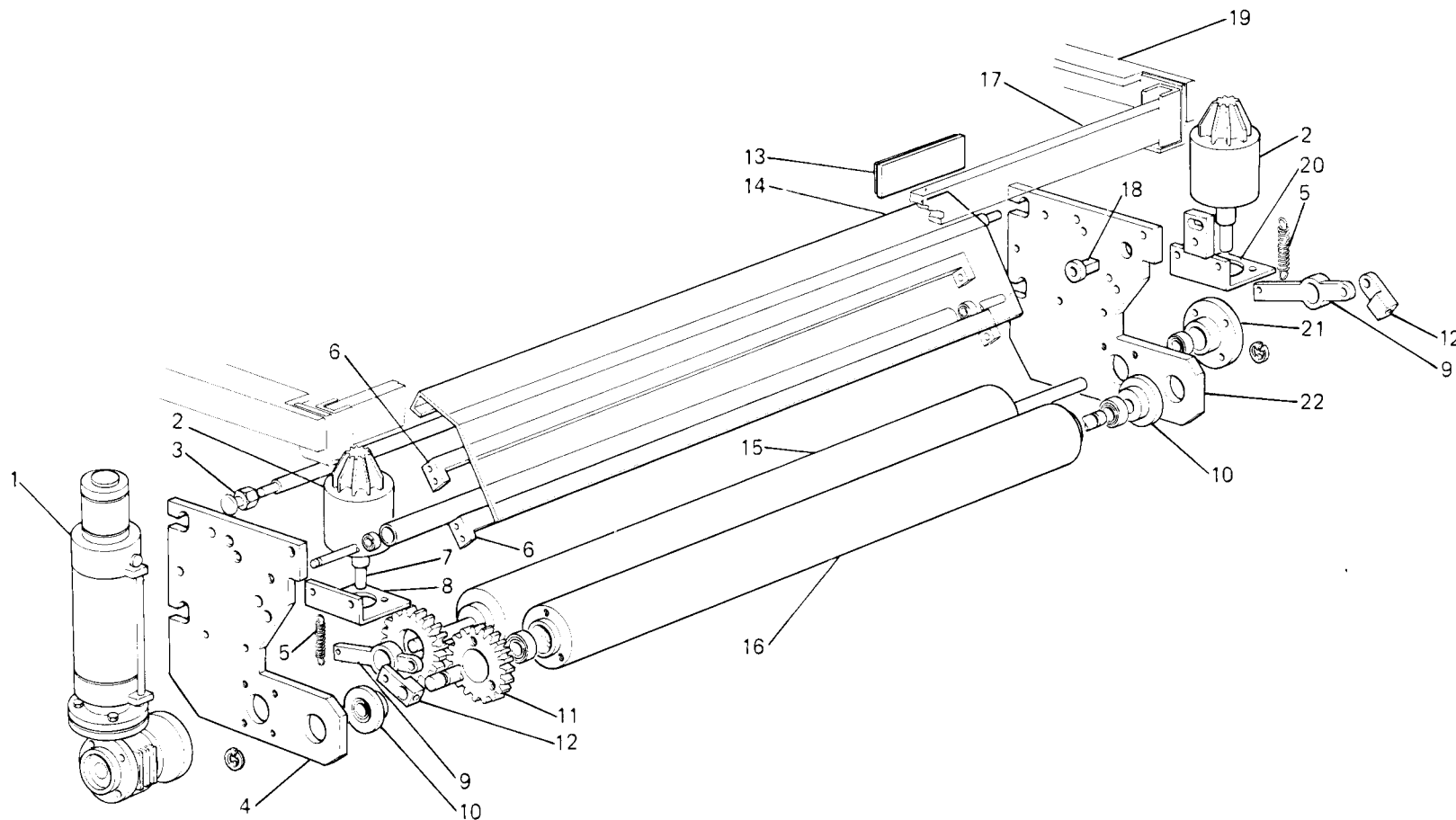


Fig. N.	Part. N. / Piece N.	Qt.
1	RFN 28/445	1
2	RFN 28/426	1
3	RFN 28/430	1
4	RFN 12/422/T	1
5	RFN 10/136/T	1
6	RFN 12/424/T	1
7	RFN 28/410	1
8	RFN CS/6000/2RS	1
9	RFN 12/421/T	1
10	RFN CS/6002/2RS	1
11	RFN 12/437/T1	1
12	RFN 14/317	1
13	RFN 10/134	2
14	RFN 12/409/T	1
15	RFN 12/426/T	1
16	RFN 12/425/T1	1
17	RFN 12/435/T2	2
18	RFN 28/400	1
19	RFN 12/434/T	1
20	RFN 10/130/G	1

Fig. N.	Part. N. Piecce N.	Qt.
1	RFN 28/400/M	1
2	RFN Elettr.	2
3	RFN 28/417	2
4	RFN 28/438	1
5	RFN 28/411	2
6	RFN 28/427	2
7	RFN 28/403	2
8	RFN 28/401	1
9	RFN 28/405	2
10	RFN 28/407	2
11	RFN 28/416	2
12	RFN 28/404	2
13	RFN 28/046/1	1
14	RFN 28/428	1
15	RFN 28/421	1
16	RFN 28/422	1
17	RFN 28/449	1
18	RFN Molla T	1
19	RFN 25/040	1
20	RFN 28/406	1
21	RFN 28/424	1
22	RFN 28/437	1

Spazzole - Brushes - Balais de Charbon RFN 12/303/3



Spazzole - Brushes - Balais de Charbon RFN 12/303/3

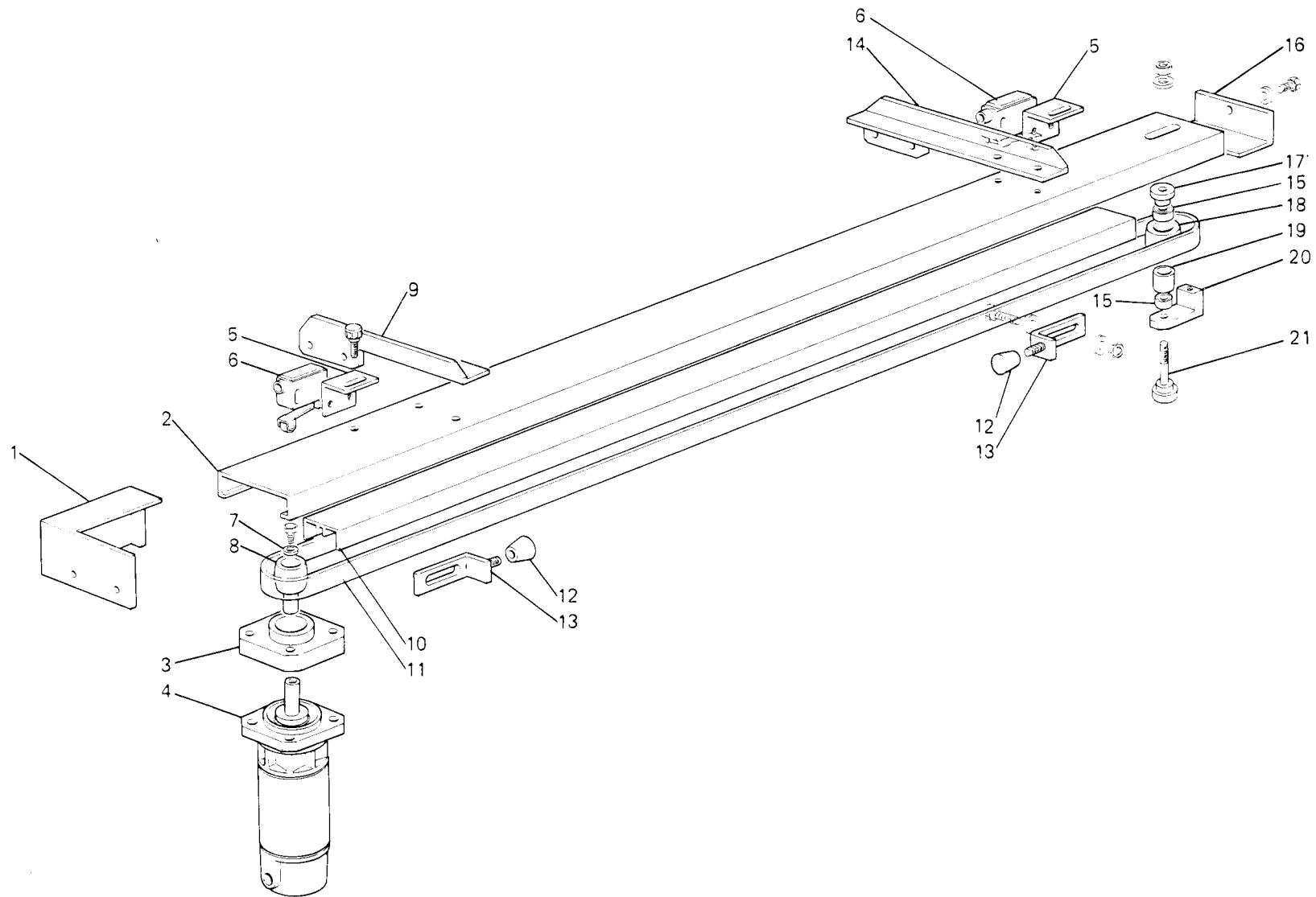
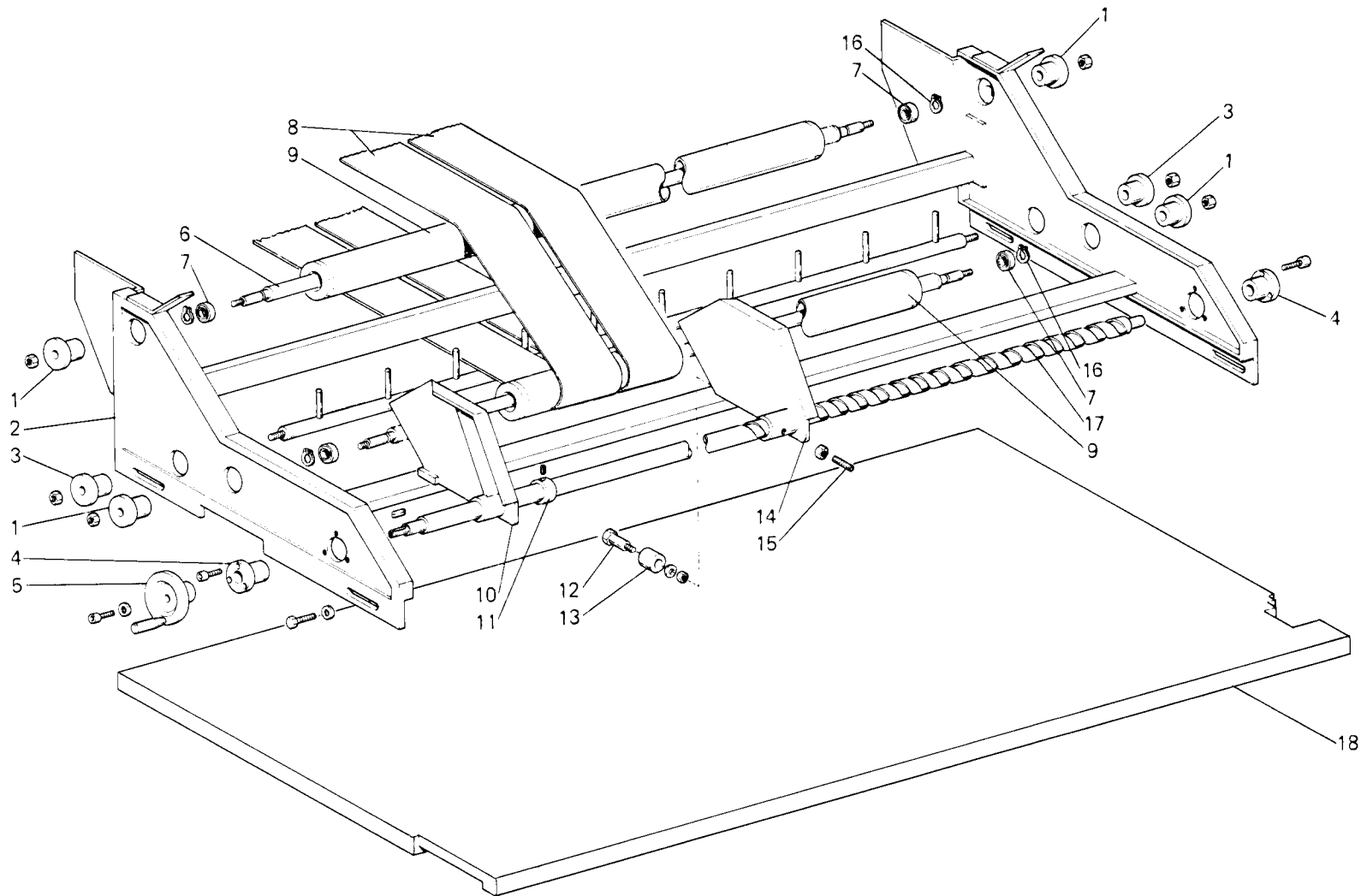


Fig. N.	Part. N. Piecce N.	Qt.
1	RFN 28/442	1
2	RFN 12/401/T	1
3	RFN 28/425	1
4	RFN 12/436/T	1
5	RFN 28/447	2
6	RFN M/10/244	2
7	RFN 12/412/T	1
8	RFN 12/411/T	1
9	RFN 28/432	1
10	RFN 12/435/T1	1
11	RFN 12/439/T	1
12	RFN 12/438/T	2
13	RFN 12/414/T	2
14	RFN 28/433	1
15	RFN CS/6000/2RS	2
16	RFN 28/443	1
17	RFN 12/406/T	1
18	RFN 12/405/T	1
19	RFN 12/516	1
20	RFN 12/403/T	1
21	RFN 28/418	1

Rim[®] TAV. 9

Fig. N.	Part. N. Piece N.	Qt.
1	RFN 14/973	4
2	RFN 14/970	1
3	RFN 14/977	2
4	RFN 14/980	2
5	RFN 14/988	1
6	RFN 14/972	1
7	RFN VC/6004	4
8	RFN 14/995	8-12
9	RFN 14/971	2
10	RFN 14/986	1
11	RFN 14/987	1
12	RFN 14/983	1
13	RFN 14/984	1
14	RFN 14/985	1
15	RFN 14/993	1
16	RFN Z/98/309	4
17	RFN 14/981	1
18	RFN 25/016/3	1



Spazzole - Brushes - Balais de Charbon RFN 12/303/3

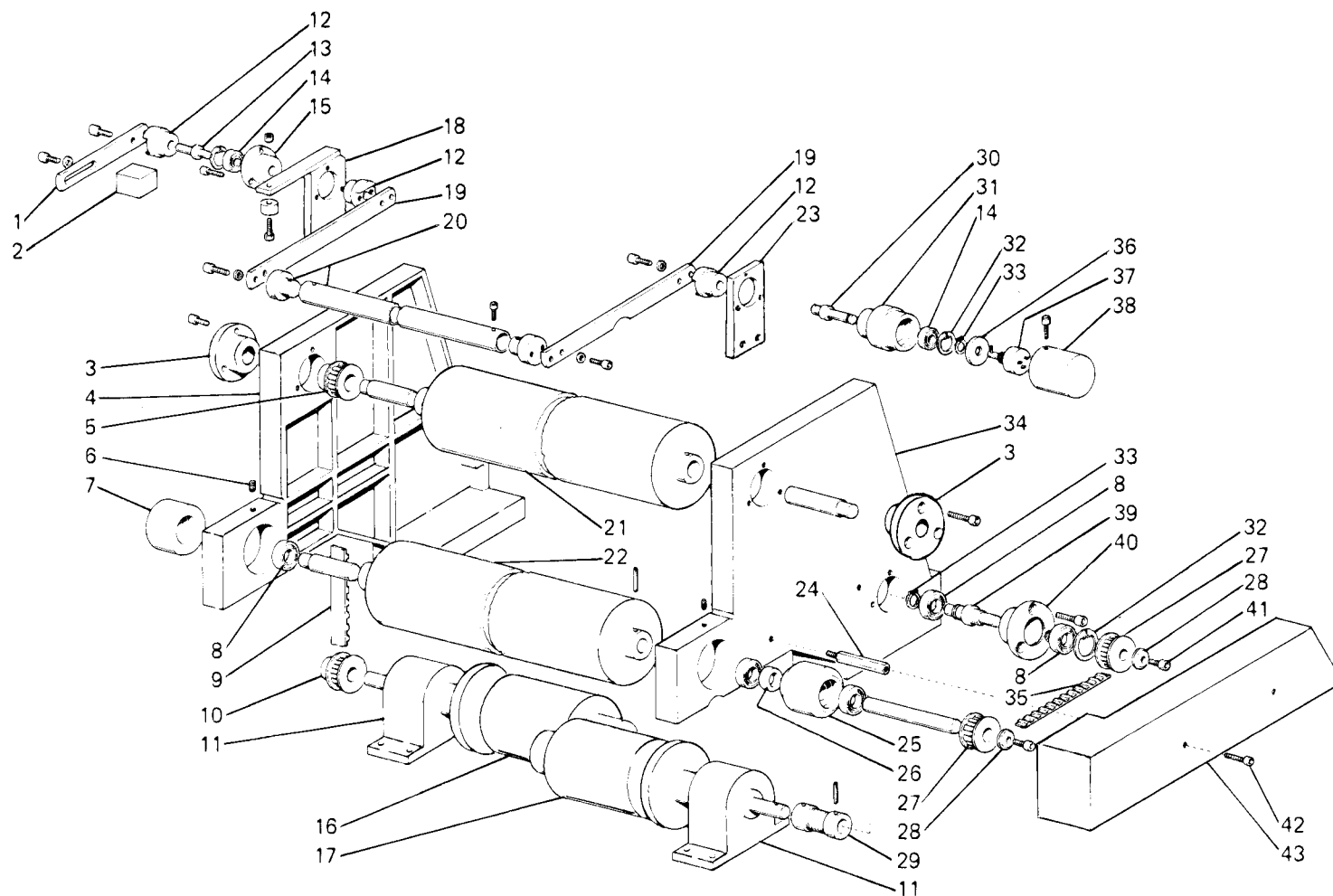
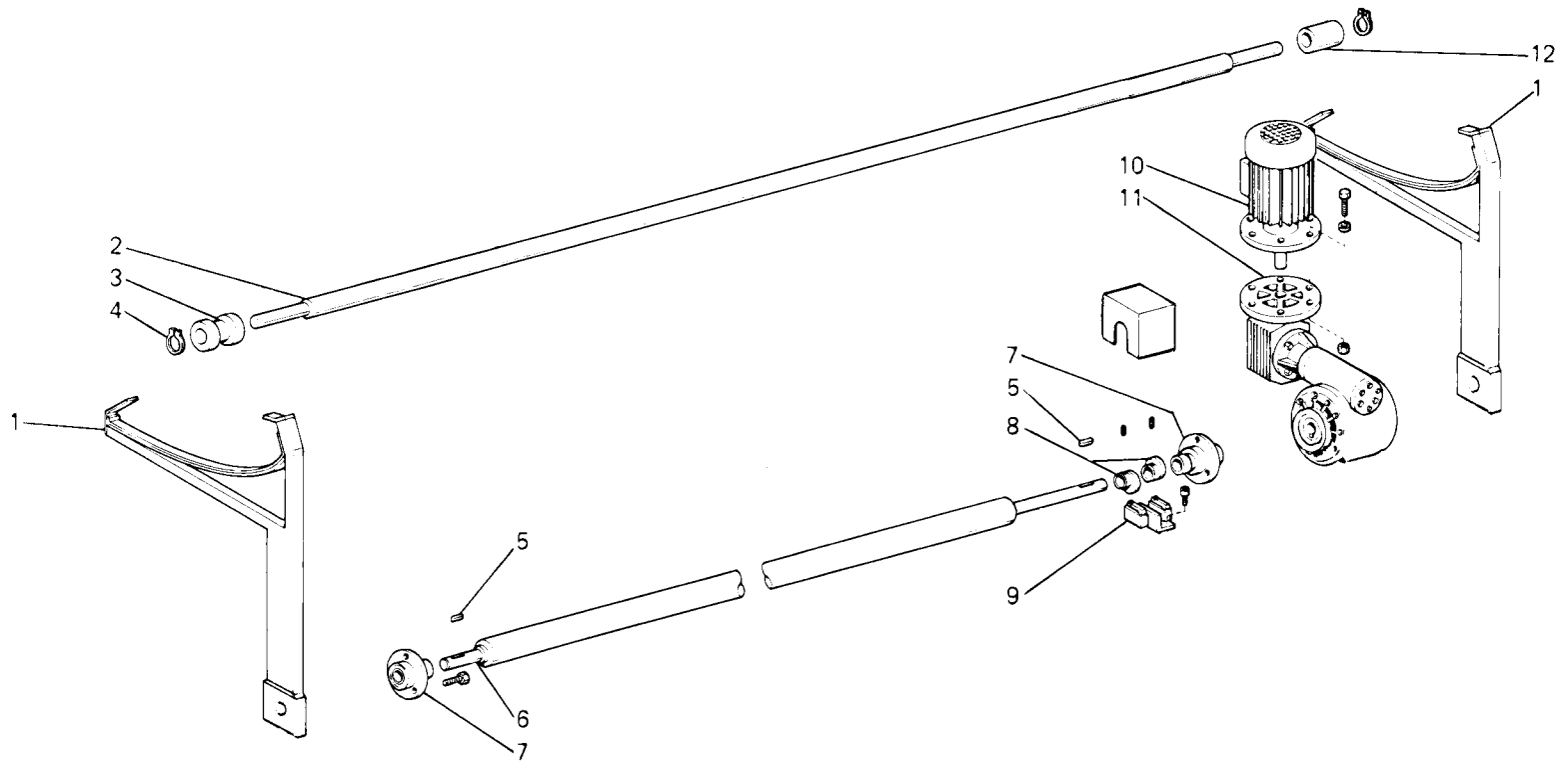


Fig. N.	Part. N. / Piece N.	Qt.
1	RFN 25/009	1
2	RFN 25/008	1
3	RFN KOYO	2
4	RFN 25/021	1
5	RFN 25/032	1
6	RFN Z/99/431	2
7	RFN 25/035	1
8	RFN VC/6004	5
9	RFN 285/L100	1
10	RFN 25/033	1
11	RFN E/048	3
12	RFN 25/010	3
13	RFN 25/011	1
14	RFN VC/6001	2
15	RFN 25/012	1
16	RFN E/046/1	1
17	RFN E/046	1
18	RFN 25/004	1
19	RFN 25/013	2
20	RFN 25/014	1
21	RFN 25/017	1
22	RFN 25/025	1
23	RFN 25/003	1
24	RFN 25/038	1
25	RFN 25/027	1
26	RFN 25/029	1
27	RFN 25/019	2
28	RFN 25/030	2
29	RFN 25/024	1
30	RFN 25/007	1
31	RFN 25/002	1
32	RFN Z/98/419	2
33	RFN Z/98/309	1
34	RFN 25/020	1
35	RFN 270/L100	1
36	RFN 25/001	1
37	RFN E/006	1
38	RFN 25/005	1
39	RFN 25/023	1
40	RFN 25/037	1
41	RFN Z/99/231	2
42	RFN Z/99/220	2
43	RFN 25/031/1	1

Rim® TAV.11

Fig. N.	Part. N. Pecce N.	Qt.
1	RFN 14/994	2
2	RFN 14/992	1
3	RFN 14/989	1
4	RFN Z/98/313	2
5	RFN Z/98/234	2
6	RFN 20/016	1
7	RFN KOYO/25	2
8	RFN 20/018	2
9	RFN M/20/005	1
10	RFN 20/002/1	1
11	RFN 20/002	1
12	RFN 14/990	1



Rim® TAV.12

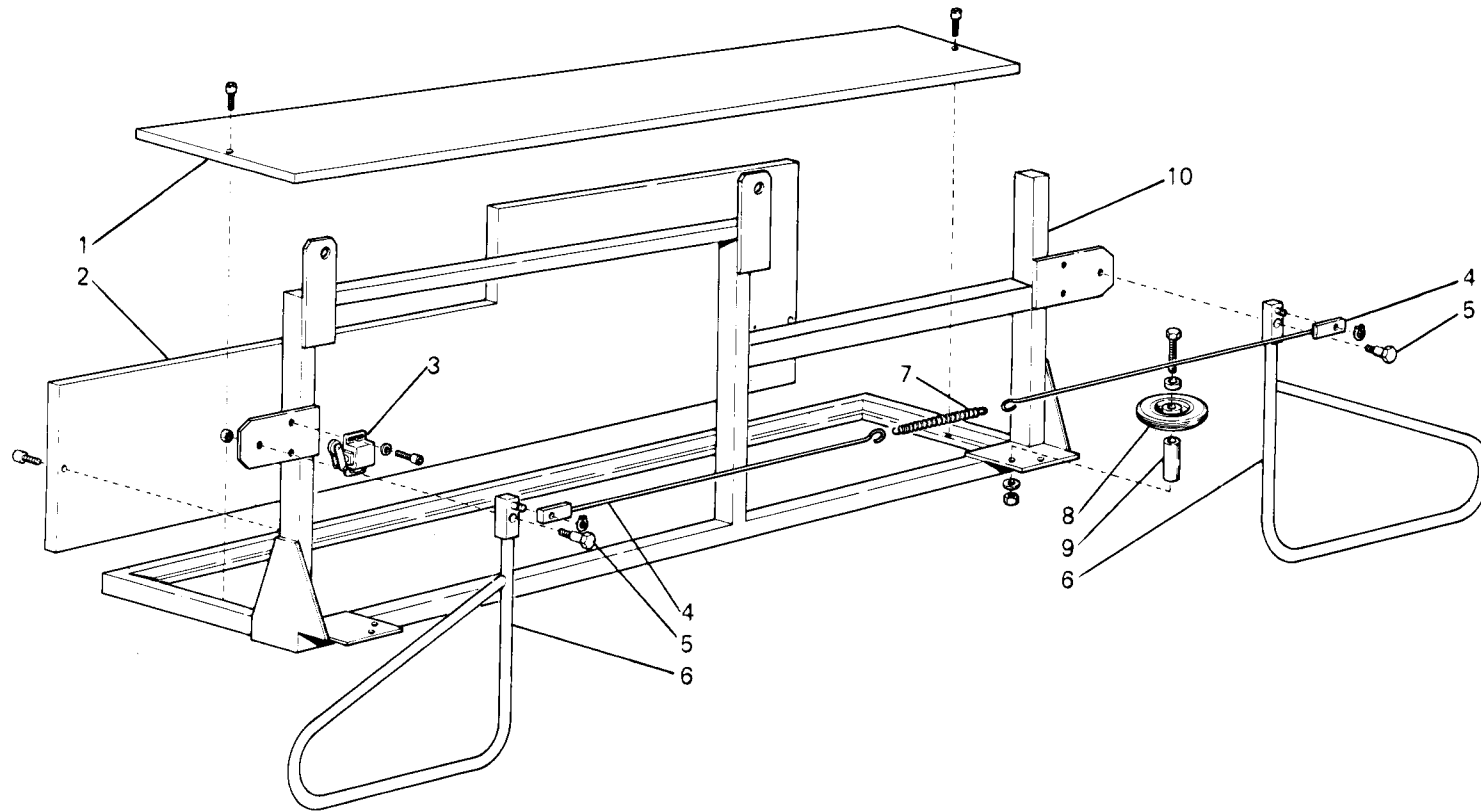
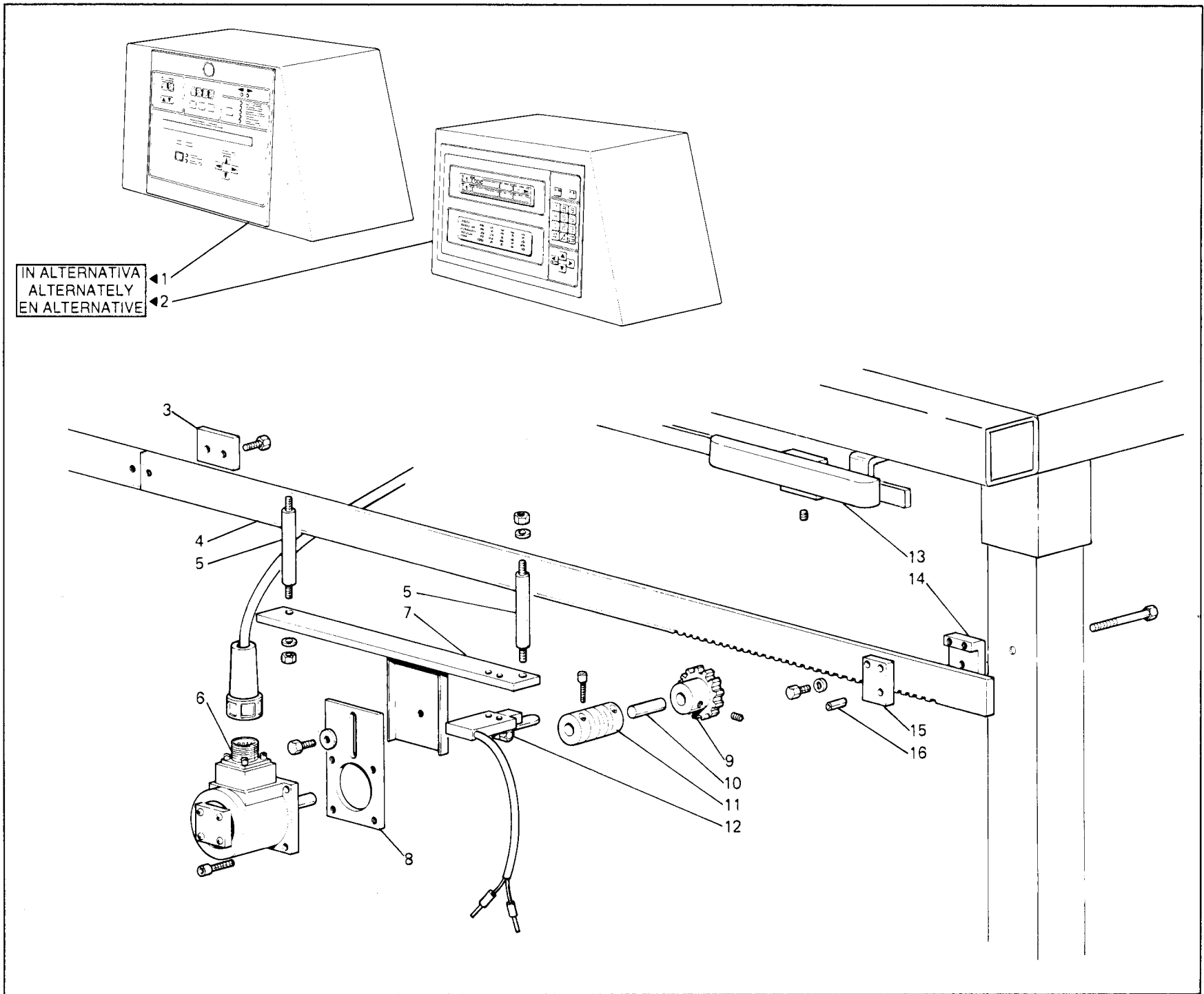


Fig. N.	Part. N. Pleca N.	Qt.
1	RFN 14/455	1
2	RFN 14/456	1
3	RFN M/12/401	1
4	RFN 14/457	2
5	RFN 10/867	2
6	RFN 10/865	2
7	RFN 10/869	1
8	RFN 14/459	1
9	RFN 14/454/1	1
10	RFN 14/451	1

Rim® TAV.13

Fig. N.	Part. N. Pecce N.	Qt.
1	RFN CM/92	1
2	RFN CM/94	1
3	RFN 24/655	1
4	RFN 24/645	1
5	RFN 12/194	2
6	RFN 24/648	1
7	RFN 24/641	1
8	RFN 24/640	1
9	RFN 24/646	1
10	RFN 24/652	1
11	RFN 24/647	1
12	RFN 24/651	1
13	RFN 24/650	1
14	RFN 24/642/M	1
15	RFN 24/643/M	1
16	RFN 98/010	1



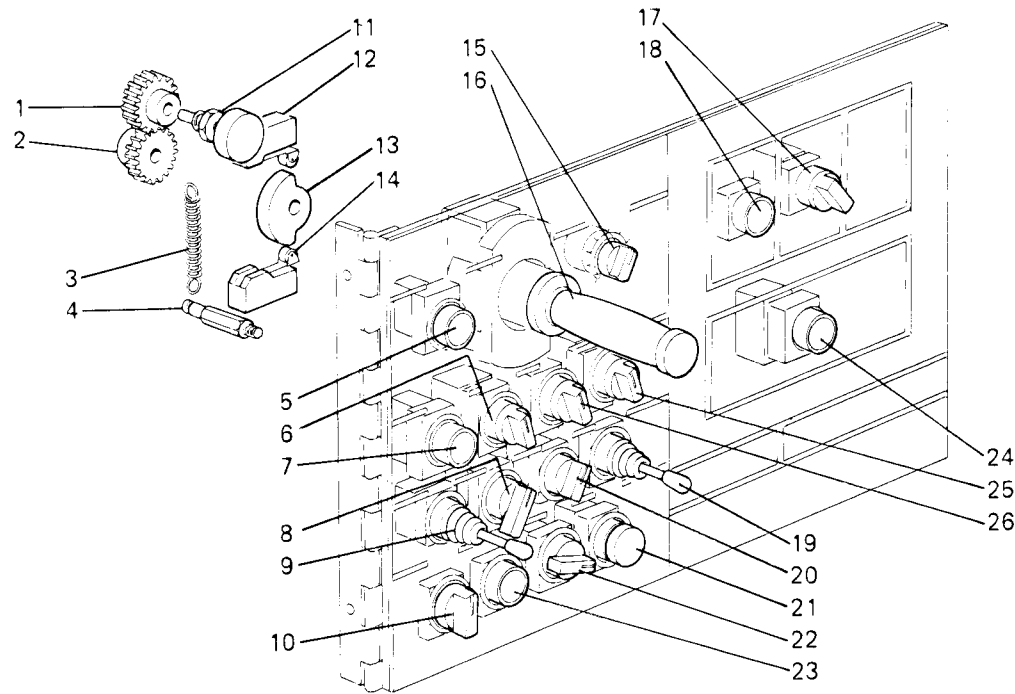


Fig. N.	Part. N. / Piece N.	Qt.
1	RFN 14/293	1
2	RFN 14/294	1
3	RFN 14/298	1
4	RFN 14/296/1	1
5	RFN SP6	1
6	RFN SP7	1
7	RFN SP11	1
8	RFN SP8	1
9	RFN SP12	1
10	RFN RR	1
11	RFN RRV	1
12	RFN SM15	1
13	RFN 14/285	1
14	RFN SM16	1
15	RFN RRV	1
16	RFN 14/280/G	1
17	RFN SP14	1
18	RFN SP13	1
19	RFN SP3	1
20	RFN SP2	1
21	RFN SP1	1
22	RFN 200K	1
23	RFN SP5	1
24	RFN SP16	1
25	RFN SP10	1
26	RFN SP9	1

Rim® TAV.15

Fig. N.	Part. N. Piece N.	Qt.
1	RFN K1	1
2	RFN K3	1
3	RFN K2	1
4	RFN K5	1
5	RFN K4	1
6	RFN KR2	1
7	RFN K7	1
8	RFN K6	1
9	RFN F	1
10	RFN XA	1
11	RFN K9	1
12	RFN K8	1
13	RFN T1VA	1
14	RFN A1	1
15	RFN U1	1
16	RFN U2	1
17	RFN U3	1
18	RFN U4	1

