

QUALITY RECOGNIZED WORLDWIDE AT VERY COMPETITIVE PRICE

F29-00-3MD-92

CATALOGO PEZZI DI RICAMBIO
SPARE PARTS CATALOGUE

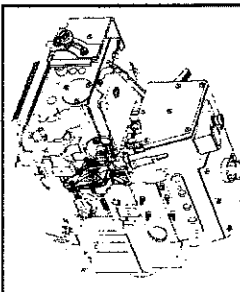
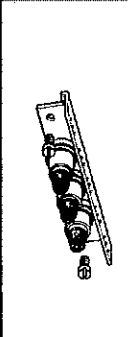


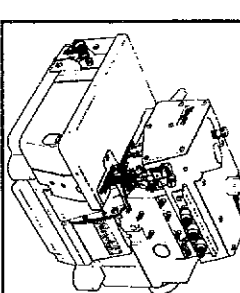
N 668/1



| | | | | |
|---|---|---|--|---|
| <p>GUIDA PER LA CONSULTAZIONE DEL CATALOGO RICAMBI</p> <p>Il catalogo pezzi di ricambio é costituito da due parti: la prima illustra i particolari comuni a tutte le teste; la seconda comprende i particolari specifici, riuniti in moduli.</p> <p>La composizione della testa interessata si ottiene consultando la tabella "COMPOSIZIONE TESTE Vega".</p> <p>I particolari che compongono un gruppo sono riquadrati; i sottogruppi, anch'essi riquadrati, sono inseriti nel gruppo di appartenenza.</p> <p>Tutti i particolari non fornibili sciolti non vengono richiamati singolarmente, ma soltanto illustrati nel gruppo di appartenenza.</p> <p>Per facilitare la ricerca viene riportato l'indice numerico di tutti i particolari comuni a tutte le teste, illustrati nella prima parte del catalogo.</p> <p>Per ordinare gli aghi, precisare il simbolo riportato in catalogo; in caso di dubbio allegare un ago campione o una bustina vuota.</p> | <p>GUIDELINES FOR THE USE OF SPARE PARTS CATALOGUE</p> <p>The spare parts catalogue is made up of 2 sections: the first section illustrates the common parts to all heads; the second section comprises the specific ones, combined in modules.</p> <p>The head composition is obtained by consulting the table "COMPOSITION VEGA HEADS".</p> <p>The parts that are components of an assembly are represented within a square; the sub-assembly, also represented within a square, are included in the assembly they are part of.</p> <p>All the parts which are not supplyable separately, are not described one by one, but only illustrated in the belonging group.</p> <p>In order to find the pieces easily, a numerical index of the parts common to all heads is given in the first section of the catalogue.</p> <p>When ordering needles, please specify catalogue symbol; if you have doubts, send a sample needle or an empty needle bag with your order.</p> | <p>GUIDE A LA CONSULTATION DU CATALOGUE PIÉCES DE RECHANGE</p> <p>Le catalogue se compose de deux parties: la première illustre les pièces communes à toutes les têtes; la seconde se réfère aux pièces spécifiques, réunies en modules.</p> <p>La composition de la tête intéressée s'obtient en consultant le tableau "COMPOSITION TÊTES Vega".</p> <p>Les pièces qui composent un groupe sont bordées; les sous-groupes eux-mêmes bordés, sont insérés dans le groupe d'appartenance.</p> <p>Toutes les pièces qui ne peuvent pas être fournies séparément ne sont pas rappelées individuellement mais uniquement illustrées dans le groupe d'appartenance.</p> <p>Pour faciliter la recherche, dans la première partie du catalogue, on a reporté l'index numérique de toutes les pièces communes à toutes les têtes.</p> <p>Pour les commandes d'aiguilles, préciser le symbole indiqué sur le catalogue, en cas de doute joindre une aiguille échantillon ou un sachet vide.</p> | <p>ANLEITUNG FÜR DIE BENUTZUNG DES ERSATZTEILKATALOGES</p> <p>Der Ersatzteilkatalog besteht aus 2 Teilen: Im ersten sind die für jeden Grundnähkopf gleichen Teile eingetragen; im zweiten sind die spezifischen Teile zu finden, die Aufbaugruppen bilden.</p> <p>Die Zusammenstellung des Nähkopfes erstelle man aufgrund der Tabelle "ZUSAMMENSTELLUNG DES VEGA-NÄHKOPFES".</p> <p>Alle Teile welche eine Teilgruppe bilden sind umrahmt; die Untergruppen, ebenfalls umrahmt, sind in der betreffenden Teilgruppe angeführt.</p> <p>Die nicht los lieferbaren Teile sind nicht alleine sondern immer zusammen mit der Aufbaugruppe eingetragen.</p> <p>Zur Erleichterung des Auswahns wurde im Katalog ein Verzeichnis von allen im ersten Teil eingetragenen Teilen eingetragen.</p> <p>Für Aufträge über Nähmadeln ist die im Ersatzteilkatalog angeführte Teilenummer anzugeben; in Zweifelsfällen ist eine Nadel als Muster oder ein entsprechender leerer Nadelbrief beizulegen.</p> | <p>GUIA PARA LA CONSULTA DEL CATALOGO DE REPUESTOS</p> <p>El catálogo de repuestos está formado de dos partes: la primera ilustra los particulares comunes a todos los cabezales; la segunda comprende particulares específicos, agrupados en módulos.</p> <p>La composición del cabezal deseado, se obtiene consultando la tabla "COMPOSICION CABEZAL Vega".</p> <p>Los particulares que componen un grupo son encuadrados.</p> <p>Los subgrupos, aunque si son encuadrados, son inseridos en el grupo de pertenencia.</p> <p>Todos los particulares no suministrables sueltos no están señalados uno por uno, sino solamente ilustrados en el grupo al cual pertenecen.</p> <p>Para facilitar el manejo figura un índice numerico de todos los particulares comunes a todos los cabezales, ilustrados en la primera parte del catálogo.</p> <p>Por pedido de agujas, precisar el símbolo reproducido en el catálogo. En caso de duda, adjuntar un modelo o un sobre vacío.</p> |
|---|---|---|--|---|

CODIFICA TESTE Vega

Vega, che fa parte della filosofia produttiva Flexsystem, è un sistema modulare di cucitura, composto da un' **Unità-Base** e diversi **Kit di Personalizzazione**, con i quali si può ottenere la sottoclasse più idonea alle diverse operazioni di cucitura. E' possibile identificare e ordinare le teste complete oppure le **Unità-Base** + **Kit** sciolti di personalizzazione.

| | | | | | | | | |
|--|---|---|---|--|---|---|---|--|
| F27-FS-... | + | WFS-6C-... | + | WFS-68-... | + | WFS-69-... | = | F27-00-... |
|  | |  | |  | |  | |  |

Codice teste
TF-XX-VV-YJK-ZZ

Codice Kit di trasformazione e/o personalizzazione teste Vega
WFS-XY-ZZZ-TW-U

XX = Specifica classe:

- 17 = overlock F17. Testa con estensione cilindrica al posto del piano di lavoro, per cuciture su capi tubolari.
- 27 = overlock F27. Testa con piano di lavoro normale.
- 29 = safety stitch F29.
- 20 = punto catenella F20.

VV = Sigla alfanumerica del codice di impiego. La sigla FS (FLEXSYSTEM) identifica le teste "Unità Base".

Y = Numero aghi.

J = Eccentricità sollevamento griffe così utilizzata:

- C=0,9 mm.
- M=1,1 mm.

K = Tipo di trasporto.

ZZ = Sigla alfanumerica dei codici sequenziali che identificano la testa specifica o la famiglia di appartenenza per le teste "Unità Base".

X = Sigla alfanumerica che identifica le classi delle teste di appartenenza del Kit, così utilizzata:

- A = Kit comuni a più classi di teste.
- 6 = Kit specifico per teste serie Vega.

Y = Sigla alfanumerica che identifica le classi del Kit:

- 1 = Kit puller.
- 3 = Kit rulli dosatori meccanici superiori.
- 5 = Kit attrezzature vari.
- 6 = Kit gruppo di comando.
- 8 = Kit carter.
- 9 = Kit campionatura.
- A = Kit elettronica di comando.
- B = Kit supporto porta placca e affini.
- C = Kit tensioni.
- D = Kit dispositivi.
- S = Kit dispositivi ausiliari (rulli elett. sup. e inf., Lisa, etc.).

ZZZ = Sigla alfanumerica per la sequenza delle classi del Kit.

TW-U = Sigla alfanumerica utilizzata nel seguente modo:

a) Per tutti i Kit ad esclusione dei Kit dispositivi (seconda posizione del codice=D).

TW-U = Sigla alfanumerica per l'indice di modifica.

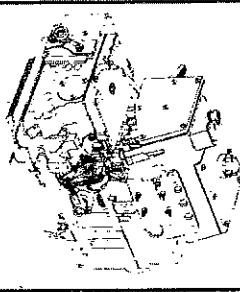
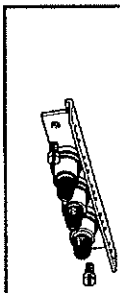


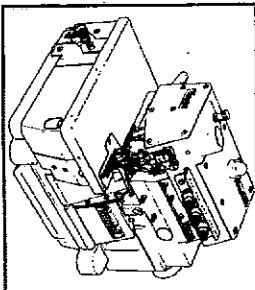
b) Per Kit dispositivi (seconda posizione del codice=D).

T = Dispositivi di base e per abbinamenti, così utilizzato:

- A = Kit elettronici.
- B = Kit di base.
- S = Kit di servizio (es. filtri).
- C = Kit per PL-MO-UP-UR.
- W = Sigla alfanumerica per dispositivi speciali.
- M = Provvisorio per usi interni.
- U = Sigla alfanumerica per indice di modifica.

CODIFICATION OF Vega HEADS

Vega, parts of the **Flexsystem** productive philosophy, is a sewing modular system, composed by one **Unit-Base** and different **Personalizing Kits**, which allow to obtain the most suitable subclass for the different sewing operations.
It is possible to identify and order both the complete heads and the **Unit-Base + loose Personalizing Kits**.

| | | | | | | | | |
|--|----|---|--|--|--|---|----|--|
| F27-FS-... | +▷ | WFS-6C-... | | WFS-68-... | | WFS-69-... | =▷ | F27-00-... |
|  | |  | |  | |  | |  |

| | |
|--|--------------------------------------|
| | Heads code TF-XX-VV-YJK-ZZ |
|--|--------------------------------------|

| | |
|--|---|
| | Transformation and/or personalization kit code for Vega heads WFS-XY-ZZZ-TW-U |
|--|---|

XX = class specification :

- 17=overlock F17. Head with cylindrical extension instead of working plate, for sewing tubulars garments.
- 27=overlock F27. Head with normal working plate.
- 29=safety stitch F29.
- 20=chain stitch F20.

VV = alphanumeric indication of use code. The initials **FS (FLEXSYSTEM)** identifies the heads "Base Unit".

Y = number of needles.

J = feed dog lifting eccentricity, used in the following way:

- C=0,9 mm.
- M=1,1 mm.

K = type of feed.

ZZ = alphanumeric indication of the sequential code which identifies the specific heads or family it belongs to heads "Base Unit".

X = alphanumeric character that identifies the class of heads the kit belongs to, used in the following way:

- A = Kit common to more than one class of head.
 - 6 = Specific Kit for Vega class heads.
- Y** = alphanumeric character which identifies the class of the kit:
- 1 = Puller kit.
 - 3 = upper mechanical metering roller kit.
 - 5 = various tool kit.
 - 6 = control assembly kit.
 - 8 = cover kit.
 - 9 = sampling kit.
- A** = electronic control kit.
- B** = needle plate holder and similar kit.
- C** = tension kit.
- D** = device kit.
- S** = auxiliary device kit (upper electronic rollers and the like, Lisa etc.).

ZZZ = alphanumeric character for the sequence of the class of the kit.

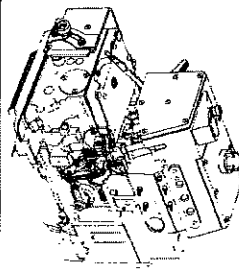
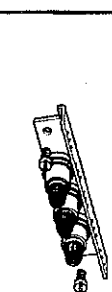


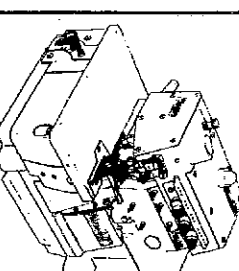
TWU = alphanumeric code used in the following way:

- a) for all kits excluding the device kits (second position of the code=D).
 - TWU** = alphanumeric code for the modification index.
 - b) for device kits (second position of the code=D).
- T** = basic kits for combination, used in the following way:

- A = electronic kit.
 - B = basic kit.
 - S = service kit (ex. filters).
 - C = Kit for PL-MO-UP-UR.
- W** = alphanumeric code for special devices.
- M** = provisional for internal use.
- U** = alphanumeric symbol for modification index.

CODAGE TÊTES Vega

Vega, faisant partie de la philosophie productive Flexsystem, c'est un système modulaire de couture, copose par une Unité-Base et par des différents Kits de Personnalisation, par lesquels on peut obtenir la sous-classe la plus propre aux différents operations de couture. Vous pouvez identifier et commander tant les têtes complètes que les Unités-Bas plus les Kits de personnalisation détachés.

| | | | | | | |
|--|----|---|--|---|----|--|
| F27-FS-... | +▷ | WFS-6C-... | WFS-68-... | WFS-69-... | =▷ | F27-00-... |
|  | |  |  |  | |  |

Code têtes
TF-XX-VV-YJK-ZZ

Code Kit de transformation et/ou personnalisation têtes Vega
WFS-XY-ZZZ-TW-UJ

XX = spécifie classe :

- 17 = overlock F17. Tête avec extension cylindrique en remplacement du plan de travail, pour couture sur articles tubulaires.
- 27 = overlock F27. Tête avec plan de travail normal.
- 29 = safety stitch F29.
- 20 = point de chaînette F20.

VV = sigle alphanumérique du code d'utilisation. Le sigle FS (FLEXSYSTEM) identifie les têtes "Unité Base".

Y = numéro aiguilles.

J = excentricité soulèvement griffes, utilisé de la manière suivante:

- C=0,9 mm.
- M=1,1 mm.

K = type d'entraînement.

ZZ = sigle alphanumérique des codes séquentiels qui identifient la tête spécifique ou la famille d'appartenance pour les têtes "Unité Base".

X = sigle alphanumérique qui identifie les classes des têtes d'appartenance du Kit, utilisé de la manière suivant:

- A=Kits communs à plusieurs classes de têtes.
- 6=Spécifique pour têtes series Vega.

Y = sigle alphanumérique qui identifie les classes du Kit:

- 1=Kit poulie.
- 3=Kit rouleaux doseurs mécaniques supérieurs.
- 5=Kit équipements divers.
- 6=Kit groupes de commande.
- 8=Kit carter.
- 9=Kit échantillonnage.
- A=Kit électronique de commande.
- B=Kit support porte plaque et similaires.
- C=Kit tensions.
- D=Kit dispositifs.
- S=Kit dispositifs auxiliaires (rouleaux électr. sup. et inf., Lisa, etc.).

ZZZ = sigle alphanumérique pour la séquence des classes des Kits.

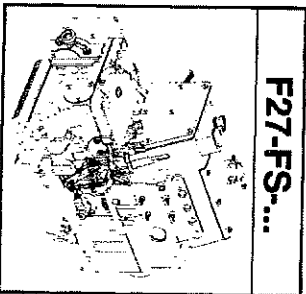
TW-U = sigle alphanumérique utilisé de la manière suivante:

- a) pour tous les Kits sauf les Kits dispositifs (deuxième position du code=D).
- b) pour les Kits dispositifs (deuxième position du code=D).
- T=Dispositifs de base et pour accouplements, utilisé de la manière suivante:
 - A=Kits électroniques.
 - B=Kit de base.
 - S=Kit de service (par ex. filtres).
 - U=sigle alphanumérique pour index de modification.
- W=sigle alphanumérique pour dispositifs spéciaux.
- M=provisoire pour usages intérieurs.

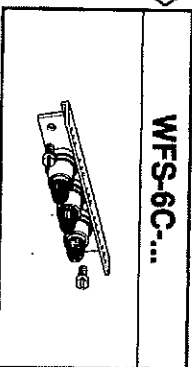
C=Kit pour PL-MO-UP-UR.

CODIFIZIERUNG DER VEGA OBERTEILE

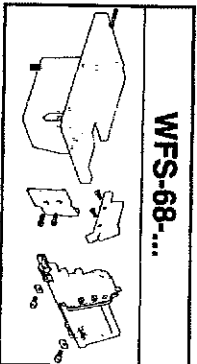
Vega, das zur Flexsystem produktiven Philosophie gehört, ist ein modulierte Nähssystem das von einer Grundheit und verschiedenen Personalisierungskits zusammengesetzt ist, die die fähigsten Subklasse für die Verschiedenen Operationen erreichen lässt. Sie können vollständige Kopie als auch die Grundheit + geklebte Personalisierungskits identifizieren und bestellen.



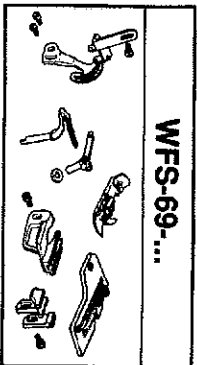
F27-FS-...



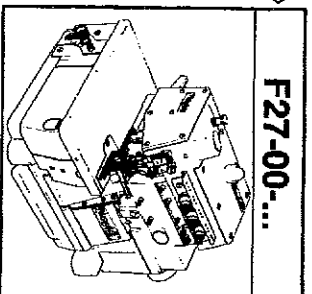
WFS-6C-...



WFS-68-...



WFS-69-...



F27-00-...

Symbol für Obertheit
TF-XX-VV-VJK-ZZ

XX = Klassenspezifikation:

17 = Überwendlichmaschine F17. Zylindrischer basis

Obertheit statt arbeit plate, zum saeuamen schlauchware.

27 = Überwendlichmaschine F27. Obertheit mit normaler arbeit plate.

29 = Sicherheitssich F29.

20 = Kettenstich F20.

VV = Zahlensymbol des Einsatzcodex. Symbol **FS (FLEXSYSTEM)** welcher die "Klasse Base" angibt.

Y = Nadelzahl.

J = Exzentrizität der Transporteurführung, wie folgt:

C=0,9 mm.

M=1,1 mm.

K = Transportart.

ZZ = Zahlensymbol für Sequenzcodex, welcher die Maschinenfamilie oder den obertheit bezeichnet für "Klasse Base".

Symbol Umbausatz und/oder personalisierung der Vega Obertheit
WFS-XY-ZZZ-TW-U

X = Zahlensymbol der Maschinenklasse zu welcher der Umbausatz gehört, wie folgt:

A = Umbausätze für mehrere Maschinenklassen.
6 = Spezielle Kit für Vega obertheit.

Y = Zahlensymbol, welcher die Klassen des Umbausatzes (Kit) angibt:

- 1 = Kit Pulver.
- 3 = Kit mech. obere Dosierungsrolle.
- 5 = Kit für verschiedene Ausrüstungen.
- 6 = Kit für Steuergruppen.
- 8 = Kit für Gehäuse.
- 9 = Kit für Einröhen.
- A = Kit elektronische Steuerung.
- B = Kit Stichplattenhalter usw.
- C = Kit für Spannungen.
- D = Kit für Vorrichtungen.
- S = Hilfsvorrichtungen (ober- und untere elektr. Walzen, Lisa, usw.).

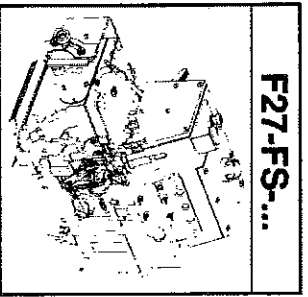
ZZZ = Zahlensymbol für die Klassensequenz der Umbausätze.

TW-U = Zahlensymbol wie folgt:

- a) für alle Umbausätze ausser für Kit Vorrichtungen (zweiter Symbol=D).
- TW-U** = Zahlensymbol für Umbau-Index.
- b) Kit für Vorrichtungen (zweiter Symbol=D).
- T = Base-Vorrichtungen und für Kupplungen, wie folgt:
- A = elektronische Kit.
- B = Base Kit.
- S = Service Kit (z.B. Filter).
- C = Kit für PL-MO-UP-UR.
- W = Zahlensymbol für Sondervorrichtungen.
- M = provisorisch für interne Zwecke.
- U = Zahlensymbol für Umbauindex.

CODIFICACION CABEZALES Vega

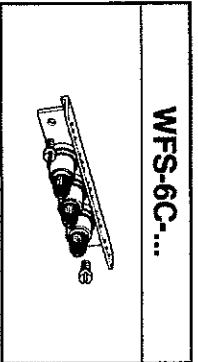
Vega, que forma parte de la filosofía productiva Flexsystem, es un sistema modular de costura, compuesto por una Unidad-base y diferentes Kit de Personalización, con los cuales se puede obtener la subclase más idonea para las diferentes operaciones de costura. Es posible identificar y solicitar los cabezales completos o bien las Unidades-Base + Kit de personalización sueltos.



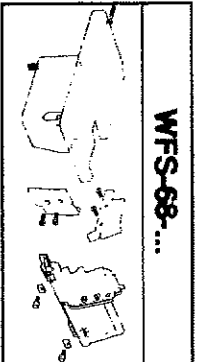
F27-FS-...



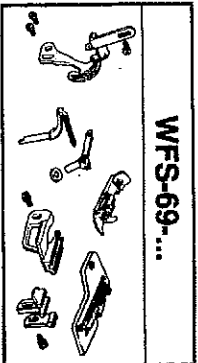
WFS-6C-...



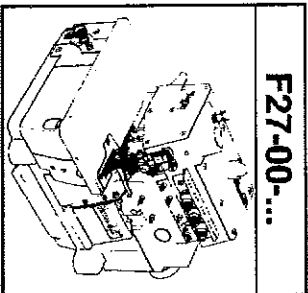
WFS-68-...



WFS-69-...



F27-00-...



Códigos cabezales
TF-XX-VV-YJK-ZZ

Códigos Kit de transformación y/o personalización cabezales Vega
WFS-XY-ZZZ-TW-U

XX = especifica clase:

- 17=overlock F17. Cabezal con extension cilindrica en sustitucion del plano de trabajo, para costuras de prendas tubulares.
- 27=overlock F27. Cabezal con puesto de trabajo normal.
- 29=safety stitch F29.
- 20=punto catenella F20.

VV = sigla alfanumérica del código de empleo. La sigla FS (FLEXSYSTEM) identifica los cabezales "Unidad Base".

Y = numero agujas.

J = excentricidad levantamiento garfios, utilizada en el siguiente modo:

- C=0,9 mm.
- M=1,1 mm.

K = tipo de transporte.

ZZ = sigla alfanumérica de los códigos secuenciales que identifican los cabezales específico o la familia de pertenencia por los cabezales "Unidad Base".

X = sigla alfanumérica que identifica las clases de los cabezales de pertenencia del Kit, utilizada en el siguiente modo:

- A=Kit comunes a diferentes tipos de cabezales.
- 6 =Kit específicos cabezales serie Vega.

Y = sigla alfanumérica que identifica las clases del Kit:

- 1 =Kit pulser.
- 3 =Kit rolos dosadores mecánicos superiores.
- 5 =Kit aparatos varios.
- 6 =Kit grupos de mando.
- 8 =Kit carter.
- 9 =Kit puesta a punto.
- A =Kit electrónico de mando.
- B =Kit soporte porta placa y similares.
- C =Kit tensiones.
- D =Kit dispositivos.
- S =Kit dispositivos auxiliares (rollos electr. sup. e inf., Lisa, etc.).

ZZZ = sigla alfanumérica para la secuencia de las clases de los Kit.

TW-U = sigla alfanumérica utilizada en el siguiente modo:

- a) para todos los Kit excluyendo los Kit dispositivos (segunda posición del código=D).
- TW-U = sigla alfanumérica para el índice de modificación.

b) para Kit dispositivos (segunda posición del código=D).

T = Dispositivos de base y para combinaciones, utilizada en el siguiente modo:

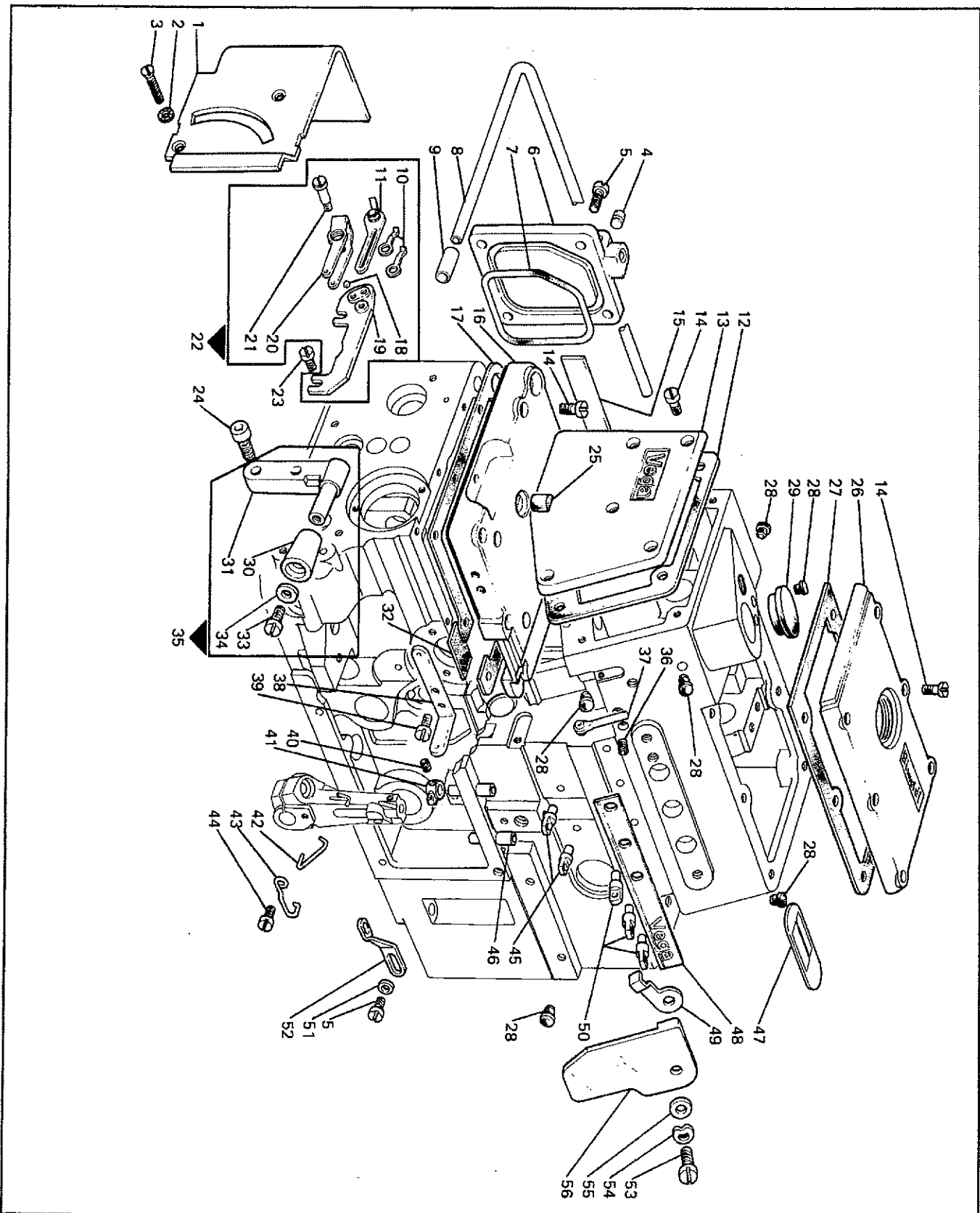
- A =Kit electrónicos.
- B =Kit de base.
- S =Kit de servicio (el.filtros). U = sigla alfanumérica para el índice de modificación C=Kit para PL-MO-UP-UR.
- W = sigla alfanumérica para dispositivos especiales
- M = provisional para usos internos

UNITA' BASE
BASE UNIT
UNITE DE BASE
GRUENDLICHE EINHEIT
UNIDAD BASE

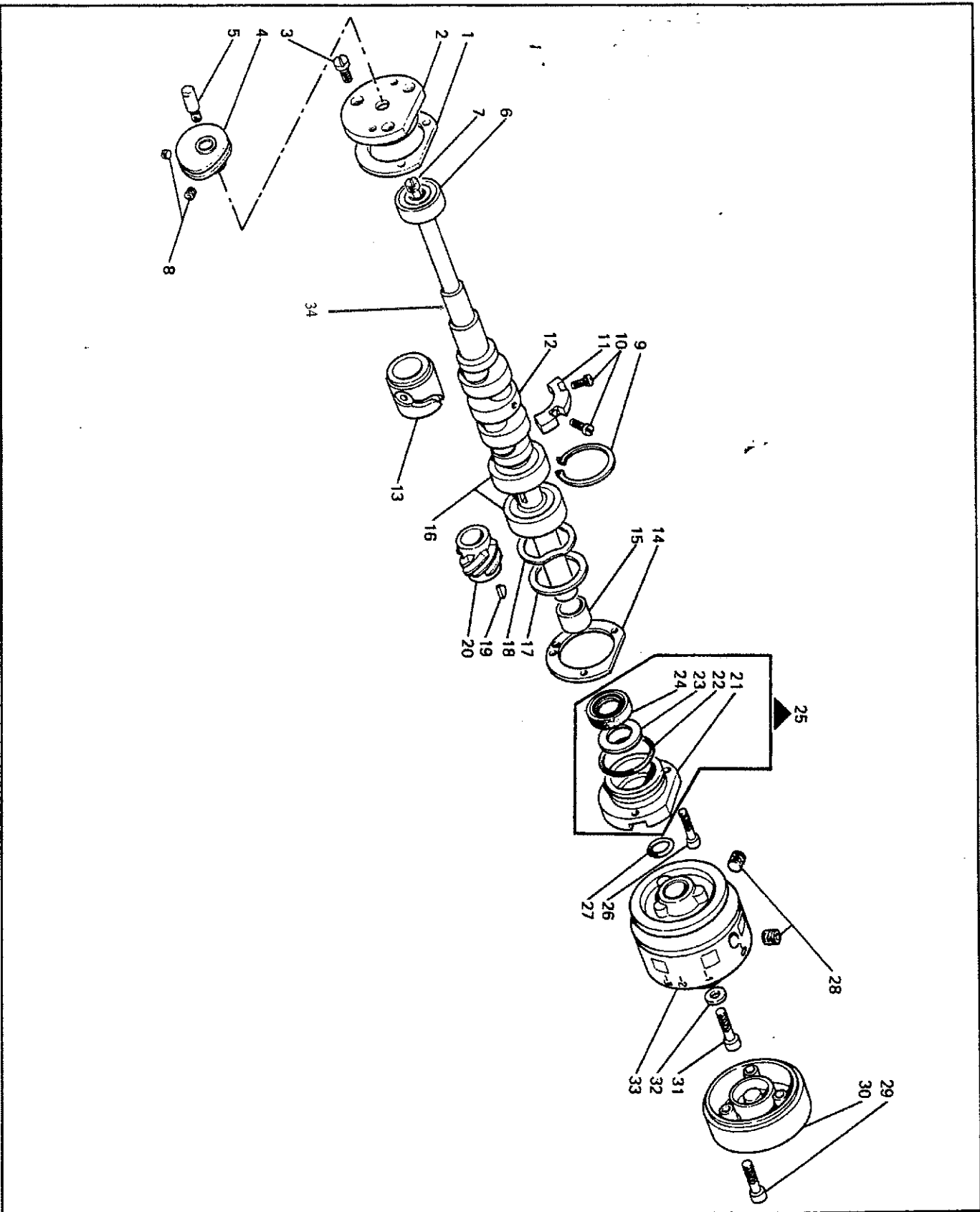
Rim[®] TAV. 1

CARTER E PASSAFILI - COVERS AND THREAD GUIDES - CARTERS ET PASSE FILS - SCHUTZDECKEL U. FADENDURCHG. - TAPADERAS Y PASAJILLOS

| Fig. N. | Part. N. Piece N. | Qt. |
|---------|----------------------|-----|
| 1 | 211690-0-00 | 1 |
| 2 | 703405-0-00 | 2 |
| 3 | 725032-0-00 | 2 |
| 4 | 729012-2-00 | 1 |
| 5 | 741937-2-00 | 5 |
| 6 | 211412-0-00 | 1 |
| 7 | 701139-0-00 | 1 |
| 8 | 209752-0-00 | 1 |
| 9 | 211683-0-00 | 1 |
| 10 | 207224-0-10 | 2 |
| 11 | 207221-2-10 | 1 |
| 12 | 211019-0-00 | 1 |
| 13 | 211016-0-01 | 1 |
| 14 | 741967-2-00 | 20 |
| 15 | 211056-0-00 | 1 |
| 16 | 211418-0-00 | 1 |
| 17 | 211416-0-00 | 1 |
| 18 | 207602-0-00 | 1 |
| 19 | 207219-0-10 | 1 |
| 20 | 207220-0-10 | 1 |
| 21 | 207225-0-10 | 1 |
| 22 | 206091-4-02 | 1 |
| 23 | 721424-2-00 | 2 |
| 24 | 722441-2-00 | 2 |
| 25 | 209389-0-00 | 1 |
| 26 | 211017-0-01 | 1 |
| 27 | 211018-0-00 | 1 |
| 28 | 207893-0-00 | 10 |
| 29 | 311067-0-00 | 1 |
| 30 | 211698-0-00 | 1 |
| 31 | 211699-0-00 | 1 |
| 32 | 209417-0-00 | 1 |
| 33 | 741634-2-00 | 1 |
| 34 | 704207-2-00 | 1 |
| 35 | 211696-4-00 | 1 |
| 36 | 745810-2-00 | 1 |
| 37 | 206714-2-00 | 1 |
| 38 | 211937-0-00 | 1 |
| 39 | 741634-2-00 | 2 |
| 40 | 745002-0-00 | 1 |
| 41 | 203135-2-10 | 1 |
| 42 | 211745-0-00 | 1 |
| 43 | 211741-0-00 | 1 |
| 44 | 741657-0-00 | 1 |
| 45 | 209760-0-00 | 2 |
| 46 | 206740-0-00 | 2 |
| 47 | 783200-0-00 | 1 |
| 48 | 211054-0-00 | 1 |
| 49 | 211020-0-00 | 1 |
| 50 | 211123-0-00 | 3 |
| 51 | 704106-2-00 | 1 |
| 52 | 211222-0-00 | 1 |
| 53 | 743547-2-00 | 1 |
| 54 | 208220-0-00 | 1 |
| 55 | 704630-0-00 | 1 |
| 56 | 209022-0-00 | 1 |



ALBERO PRINCIPALE - MAIN SHAFT - ARBRE PRINCIPAL - HAUPTWELLE - CIGÜENAL PRINCIPAL

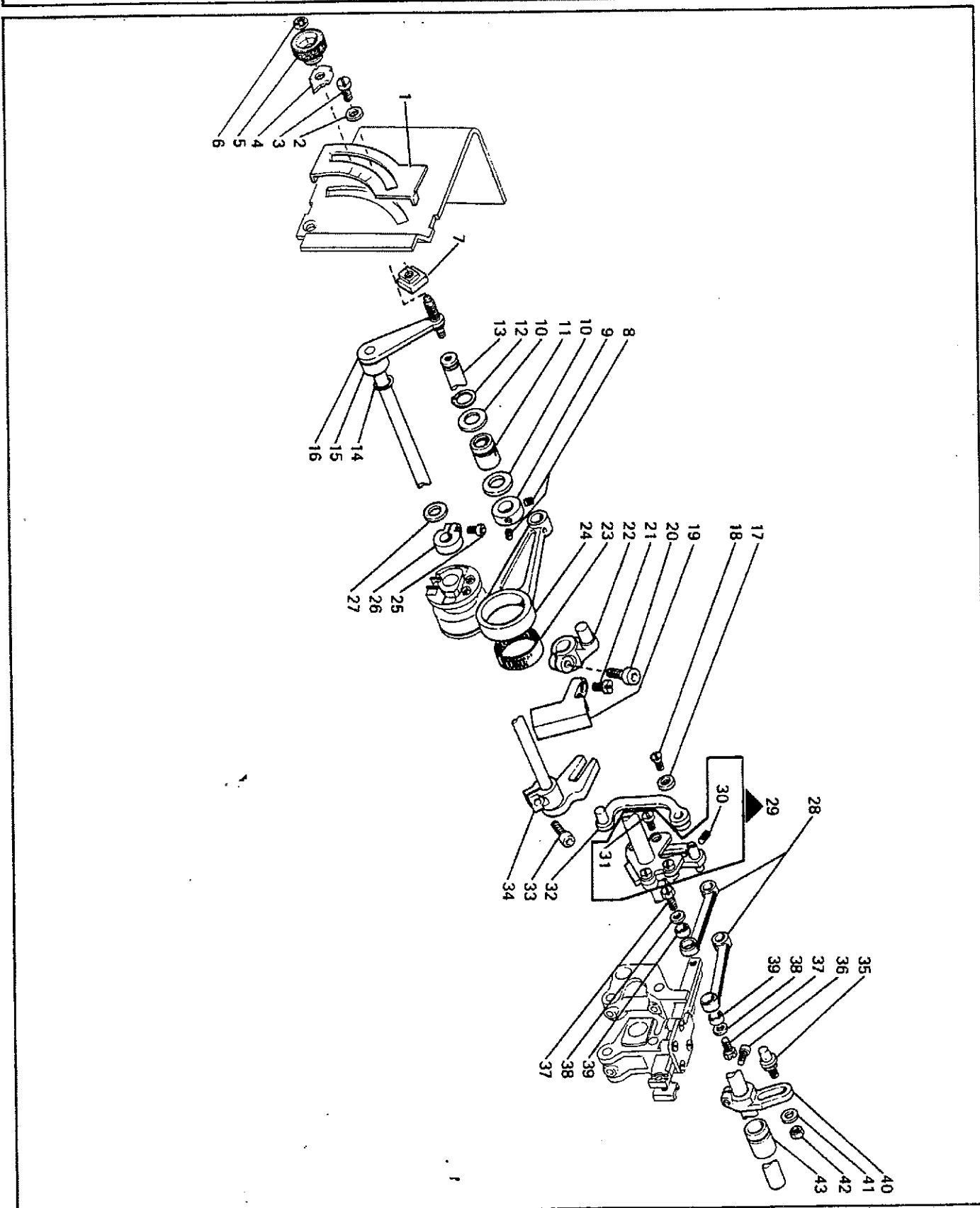


| Fig. N. | Part N. Pics N. | Qt. |
|---------|--------------------|-----|
| 1 | 206543-0-01 | 1 |
| 2 | 206860-0-01 | 1 |
| 3 | 741956-2-00 | 3 |
| 4 | 209320-2-00 | 1 |
| 5 | 204757-0-11 | 1 |
| 6 | 202389-0-10 | 1 |
| 7 | 209610-0-01 | 1 |
| 8 | 727203-0-00 | 2 |
| 9 | 202386-0-10 | 2 |
| 10 | 721473-2-00 | 1 |
| 11 | 209146-0-00 | 2 |
| 12 | 211379-2-00 | 1 |
| 13 | 211104-0-00 | 1 |
| 14 | 209111-0-00 | 1 |
| 15 | 206692-0-00 | 1 |
| 16 | 202387-0-10 | 2 |
| 17 | 209185-0-00 | 1 |
| 18 | 206689-0-01 | 1 |
| 19 | 204122-0-10 | 1 |
| 20 | 206556-0-01 | 1 |
| 21 | 209109-0-00 | 1 |
| 22 | 701133-0-00 | 1 |
| 23 | 206693-0-00 | 1 |
| 24 | 700630-0-00 | 1 |
| 25 | 209110-4-00 | 1 |
| 26 | 722063-2-00 | 3 |
| 27 | 701116-0-00 | 1 |
| 28 | 729034-2-00 | 2 |
| 29 | 722461-2-00 | 3 |
| 30 | 211131-0-00 | 1 |
| 31 | 742675-0-00 | 1 |
| 32 | 704236-2-00 | 1 |
| 33 | 321181-0-00 | 1 |
| 34 | 211342-2-00 | 4 |

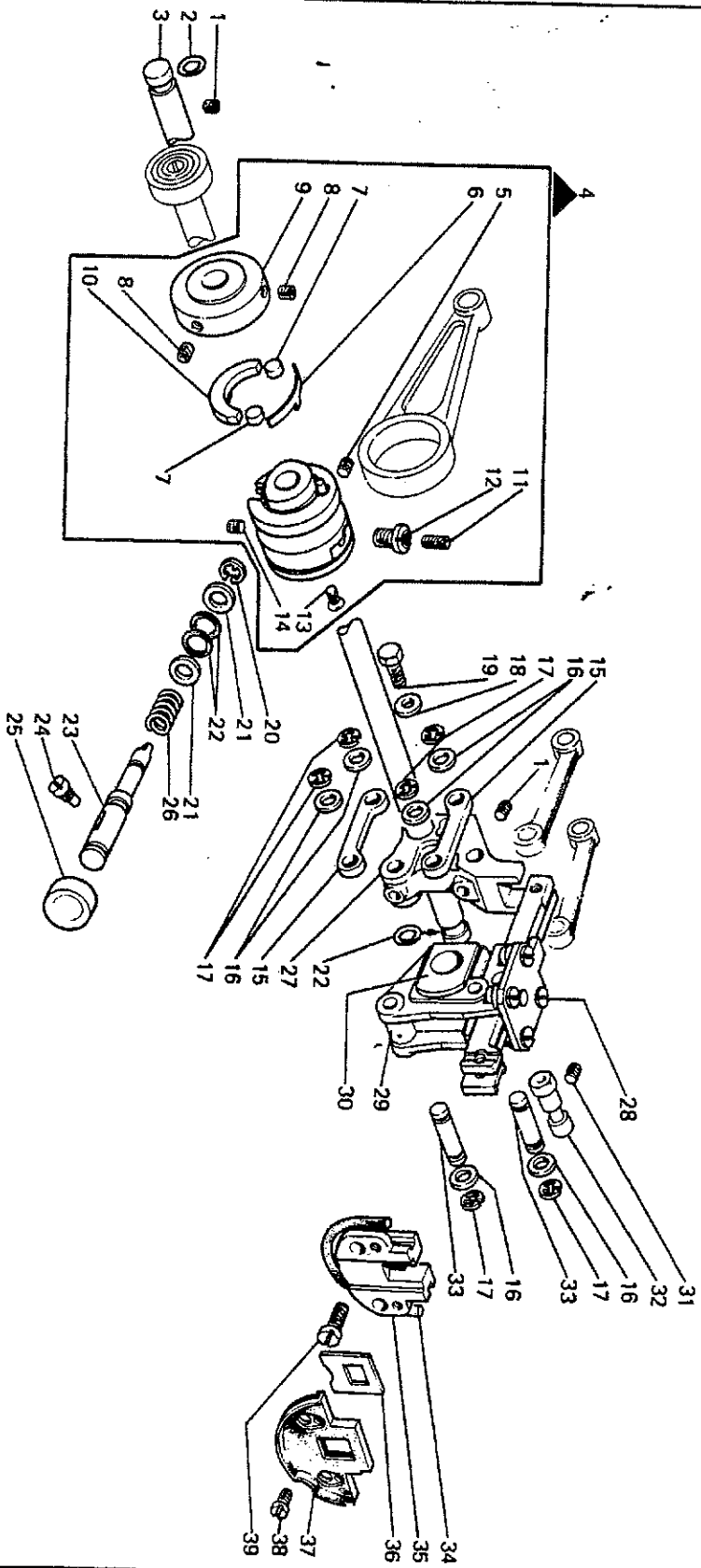
Rim[®] Tav. 3

COMANDO GRIFFE - FEED DOGS CONTROL - COMMANDE GRIFFES - TRANSPORTEURANTRIEB - MANDO DIENTES

| Fig. N. | Part. N. Pecce N. | Q.t. |
|---------|----------------------|------|
| 1 | 208693-0-00 | 1 |
| 2 | 704409-2-00 | 2 |
| 3 | 721475-2-00 | 2 |
| 4 | 206796-0-00 | 1 |
| 5 | 206798-0-00 | 1 |
| 6 | 700207-0-00 | 1 |
| 7 | 211612-0-01 | 2 |
| 8 | 729013-2-00 | 2 |
| 9 | 313060-2-00 | 1 |
| 10 | 704853-0-00 | 2 |
| 11 | 211406-0-00 | 1 |
| 12 | 700012-0-00 | 1 |
| 13 | 211405-0-00 | 1 |
| 14 | 701007-0-00 | 1 |
| 15 | 209411-0-00 | 1 |
| 16 | 209408-2-00 | 1 |
| 17 | 207719-0-00 | 1 |
| 18 | 724032-0-00 | 1 |
| 19 | 209402-0-00 | 1 |
| 20 | 744334-2-00 | 1 |
| 21 | 741967-2-00 | 2 |
| 22 | 211382-2-00 | 1 |
| 23 | 202384-0-10 | 1 |
| 24 | 209390-0-00 | 1 |
| 25 | 741745-2-00 | 1 |
| 26 | 100620-2-10 | 1 |
| 27 | 704829-0-00 | 1 |
| 28 | 209400-0-00 | 2 |
| 29 | 211394-3-00 | 2 |
| 30 | 745827-2-00 | 2 |
| 31 | 741936-2-00 | 4 |
| 32 | 209401-2-01 | 1 |
| 33 | 722422-2-00 | 1 |
| 34 | 209403-2-00 | 1 |
| 35 | 209388-0-01 | 1 |
| 36 | 744332-2-00 | 1 |
| 37 | 202490-0-10 | 2 |
| 38 | 705208-0-00 | 2 |
| 39 | 202032-0-11 | 2 |
| 40 | 211387-2-00 | 1 |
| 41 | 704306-2-00 | 1 |
| 42 | 733806-2-00 | 1 |
| 43 | 211407-0-00 | 1 |



COMANDO GRIFFE - FEED DOGS CONTROL - COMMANDE GRIFRES - TRANSPORTEURANTRIEB - MANDO DIENTES



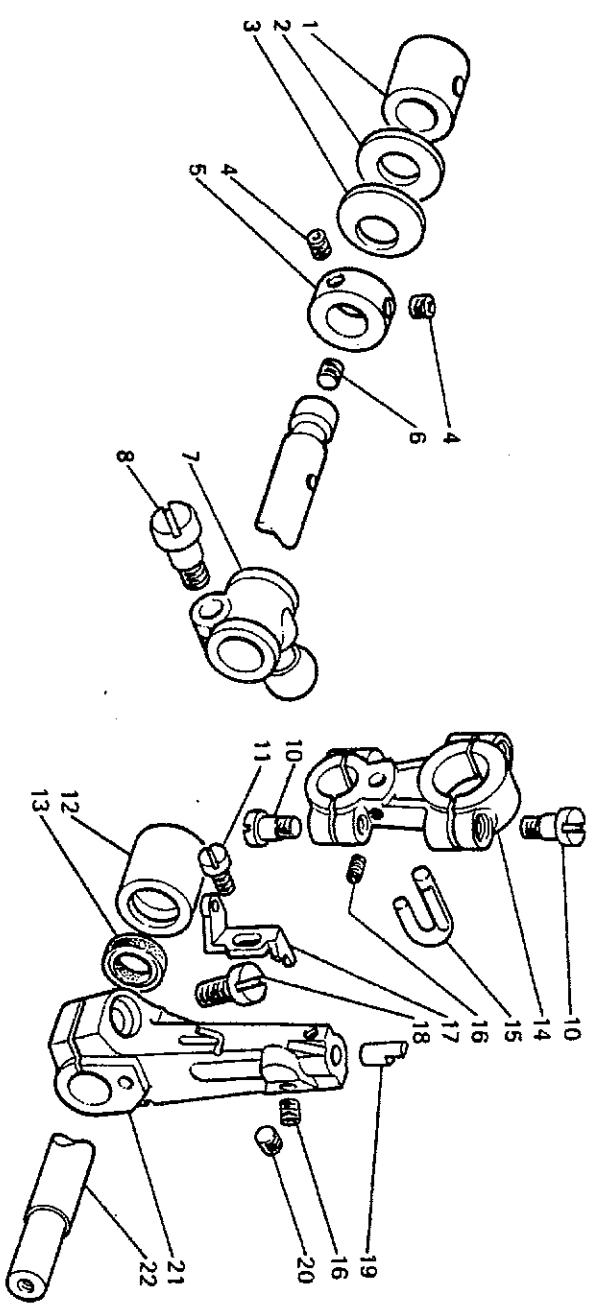
Rim® TAV 4

| Fig. N. | Part N. Place N. | Qt. |
|---------|---------------------|-----|
| 1 | 729012-2-00 | 2 |
| 2 | 701006-0-00 | 1 |
| 3 | 211295-0-00 | 1 |
| 4 | 211448-4-00 | 1 |
| 5 | 745815-2-00 | 1 |
| 6 | 209471-0-00 | 1 |
| 7 | 209442-0-00 | 2 |
| 8 | 745812-2-00 | 2 |
| 9 | 209445-2-02 | 1 |
| 10 | 209443-0-10 | 1 |
| 11 | 729031-2-00 | 1 |
| 12 | 211444-0-00 | 1 |
| 13 | 724430-2-00 | 4 |
| 14 | 728232-0-00 | 1 |
| 15 | 211431-0-00 | 4 |
| 16 | 703802-0-00 | 8 |
| 17 | 700005-0-00 | 8 |
| 18 | 704409-2-00 | 1 |
| 19 | 740087-2-00 | 1 |
| 20 | 700208-0-00 | 1 |
| 21 | 704314-2-00 | 2 |
| 22 | 701004-0-00 | 3 |
| 23 | 209447-0-02 | 1 |
| 24 | 350555-0-00 | 1 |
| 25 | 209449-0-00 | 1 |
| 26 | 202408-0-10 | 1 |
| 27 | 211430-0-00 | 1 |
| 28 | 741936-2-00 | 4 |
| 29 | 211427-3-00 | 1 |
| 30 | 211375-0-00 | 1 |
| 31 | 729033-2-00 | 1 |
| 32 | 209379-0-00 | 1 |
| 33 | 321055-0-00 | 4 |
| 34 | 207948-0-00 | 1 |
| 35 | 211381-0-00 | 1 |
| 36 | 211385-0-00 | 1 |
| 37 | 211386-2-00 | 1 |
| 38 | 741611-2-00 | 2 |
| 39 | 722063-2-00 | 2 |

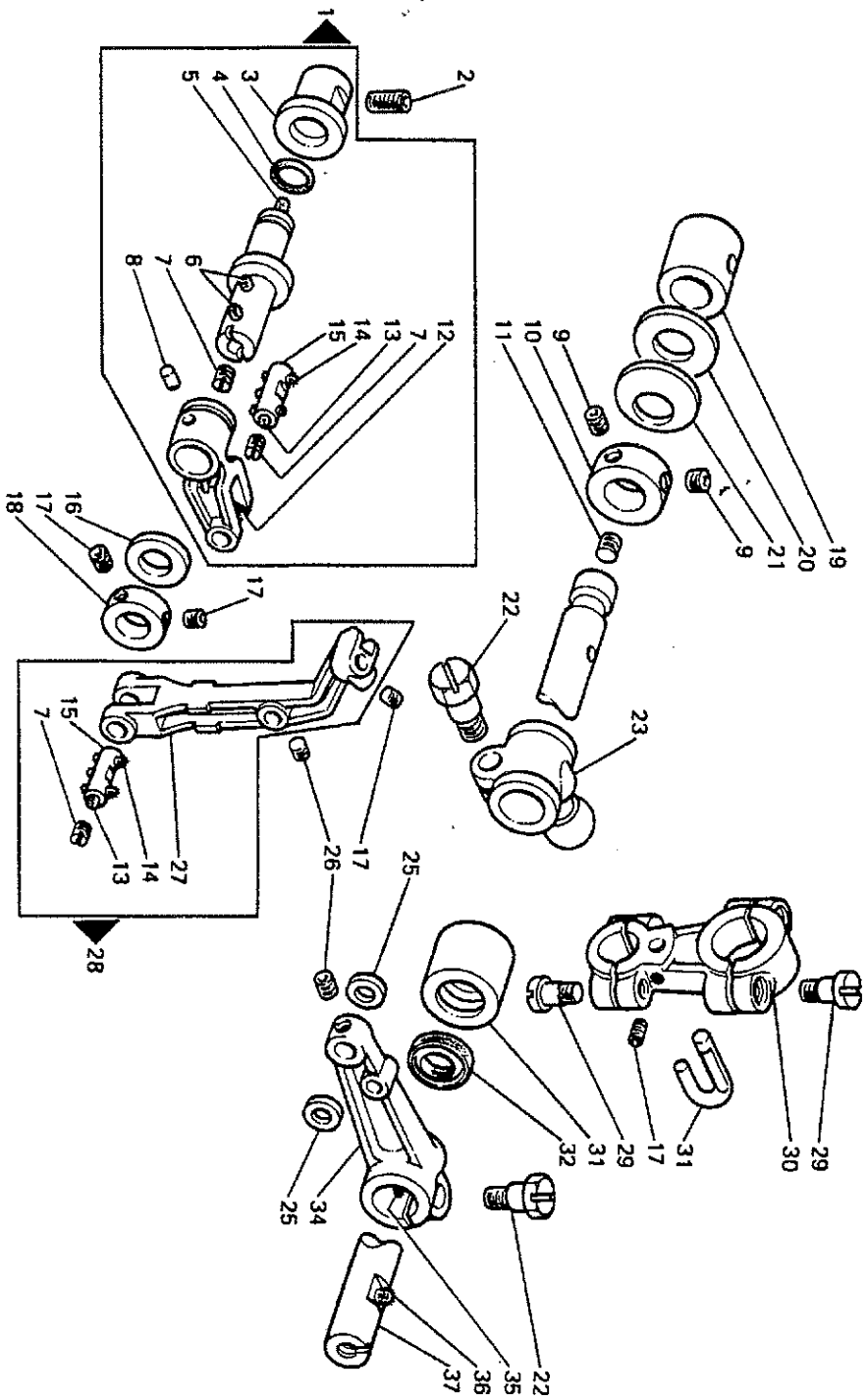
Rim[®] TAV. 5

PORTA CROCHET INFERIORE - LOWER LOOPER HOLDER - PORTE CROCHET INFER. - UNTERE GREIFERTRÄGER - SOPORTE CROCHET INFERIOR

| Fig. N. | Part. N. Place N. | Qt. |
|---------|----------------------|-----|
| 1 | 211209-0-01 | 1 |
| 2 | 705036-0-00 | 1 |
| 3 | 211281-0-00 | 1 |
| 4 | 729013-2-00 | 2 |
| 5 | 313050-2-00 | 1 |
| 6 | 727036-2-00 | 1 |
| 7 | 211220-2-00 | 1 |
| 8 | 201128-0-10 | 1 |
| 10 | 722089-2-00 | 4 |
| 11 | 741415-2-00 | 1 |
| 12 | 211253-0-01 | 1 |
| 13 | 311166-0-00 | 1 |
| 14 | 209270-2-02 | 1 |
| 15 | 209272-0-00 | 1 |
| 16 | 745912-2-00 | 2 |
| 17 | 206015-0-00 | 1 |
| 18 | 721863-0-00 | 1 |
| 19 | 209258-0-00 | 1 |
| 20 | 745910-2-00 | 1 |
| 21 | 211250-2-00 | 1 |
| 22 | 211276-2-10 | 1 |



PORTA CROCHET SUPERIORE - UPPER LOOPER HOLDER - PORTE CROCHET SUPER. - OBERE GREIFERTRAEGER - SOPORTE CROCHET SUPERIOR



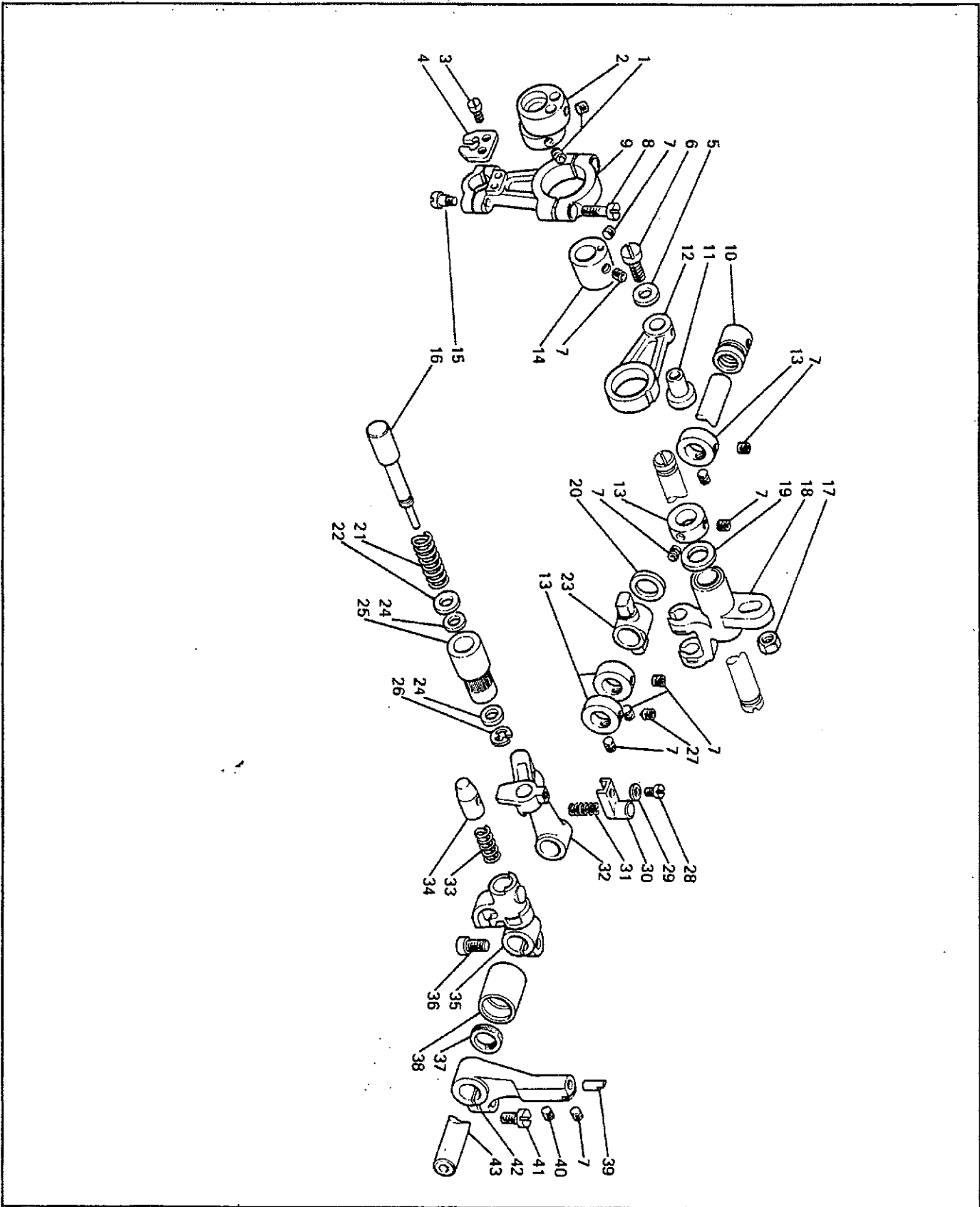
Rim[®] TAV. 6

| Fig. N. | Part. N. / Piece N. | Qt. |
|---------|---------------------|-----|
| 1 | 211245-3-00 | 1 |
| 2 | 729064-2-00 | 1 |
| 3 | 211239-0-00 | 1 |
| 4 | 701005-0-00 | 1 |
| 5 | 778411-0-00 | 1 |
| 6 | 778204-0-00 | 4 |
| 7 | 745002-0-00 | 2 |
| 8 | 310724-0-00 | 2 |
| 9 | 729013-2-00 | 1 |
| 10 | 313060-2-00 | 1 |
| 11 | 727036-2-00 | 1 |
| 12 | 778503-0-00 | 1 |
| 13 | 778403-0-00 | 2 |
| 14 | 778202-0-00 | 10 |
| 15 | 211208-4-00 | 2 |
| 16 | 704873-0-00 | 1 |
| 17 | 745812-2-00 | 4 |
| 18 | 211241-2-00 | 1 |
| 19 | 211209-0-01 | 1 |
| 20 | 705036-0-00 | 1 |
| 21 | 211281-0-00 | 1 |
| 22 | 201128-0-10 | 2 |
| 23 | 211219-2-00 | 1 |
| 24 | 211213-0-00 | 2 |
| 25 | 745810-2-00 | 2 |
| 26 | 211202-0-00 | 1 |
| 27 | 211254-3-00 | 1 |
| 28 | 722089-2-00 | 4 |
| 29 | 209270-2-02 | 1 |
| 30 | 209272-0-00 | 1 |
| 31 | 211253-0-01 | 1 |
| 32 | 311166-0-00 | 1 |
| 33 | 211215-2-00 | 1 |
| 34 | 778419-0-00 | 1 |
| 35 | 778208-0-00 | 1 |
| 36 | 778208-0-00 | 1 |
| 37 | 211280-4-10 | 1 |

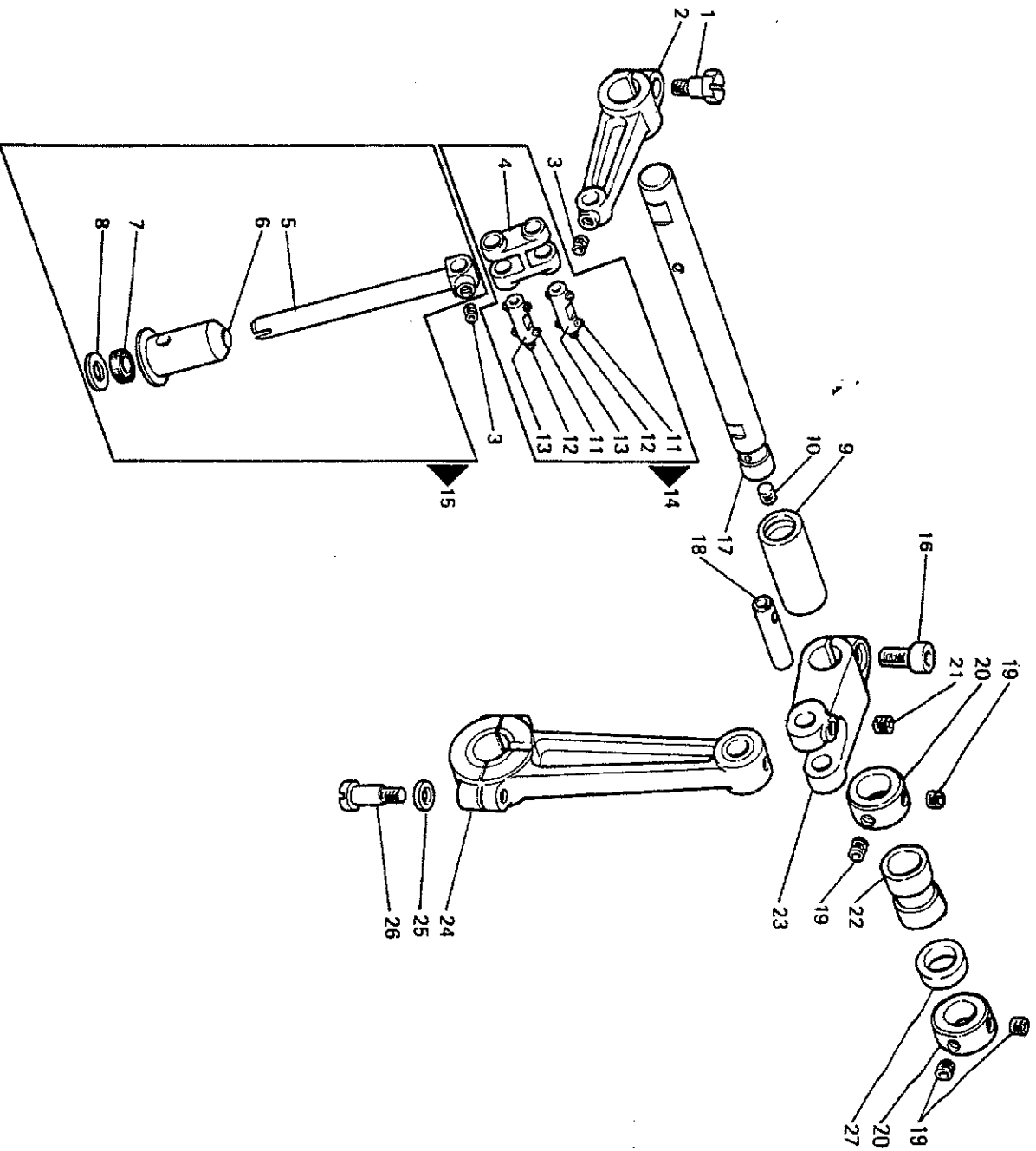
Rim[®] TAV. 7

PORTA CROCHET PUNTO SIC.-SAFETY STITCH LOOPER HOLDER-PORTE CROCHET POINT SUR.-GREIFERHAELGER A SICHERHEITSTICH SOPORTE CROCHET PUNTO SEG.

| Fig. N. | Part. N. / Piece N. | Q.t. |
|---------|---------------------|------|
| 1 | 745815-2-00 | 2 |
| 2 | 209318-2-00 | 1 |
| 3 | 741558-0-00 | 1 |
| 4 | 207700-0-00 | 2 |
| 5 | 705008-0-00 | 1 |
| 6 | 722452-2-00 | 1 |
| 7 | 745812-2-00 | 11 |
| 8 | 741387-2-00 | 1 |
| 9 | 209309-2-01 | 2 |
| 10 | 209200-0-00 | 1 |
| 11 | 209297-0-00 | 1 |
| 12 | 209296-0-00 | 1 |
| 13 | 206606-0-00 | 4 |
| 14 | 209299-2-00 | 1 |
| 15 | 743243-2-00 | 2 |
| 16 | 209307-0-00 | 1 |
| 17 | 733507-2-00 | 1 |
| 18 | 211293-2-01 | 1 |
| 19 | 704841-0-00 | 1 |
| 20 | 704860-0-00 | 1 |
| 21 | 202408-0-10 | 1 |
| 22 | 704314-2-00 | 1 |
| 23 | 209308-0-00 | 1 |
| 24 | 701004-0-00 | 2 |
| 25 | 209303-0-00 | 1 |
| 26 | 709207-0-00 | 1 |
| 27 | 730022-2-00 | 1 |
| 28 | 722400-2-00 | 1 |
| 29 | 704302-4-00 | 1 |
| 30 | 209282-0-00 | 1 |
| 31 | 209283-0-00 | 1 |
| 32 | 209300-0-00 | 1 |
| 33 | 304195-0-10 | 1 |
| 34 | 304172-0-10 | 1 |
| 35 | 209301-2-00 | 1 |
| 36 | 722443-2-00 | 1 |
| 37 | 307651-0-00 | 1 |
| 38 | 211290-0-00 | 1 |
| 39 | 209935-0-00 | 2 |
| 40 | 745800-2-00 | 2 |
| 41 | 742232-2-00 | 1 |
| 42 | 209934-2-00 | 1 |
| 43 | 209280-0-00 | 1 |



BARRA AGO - NEEDLE BAR - BARRE AIGUILLE - NADELSTANGE - BARRA DE AGUJA



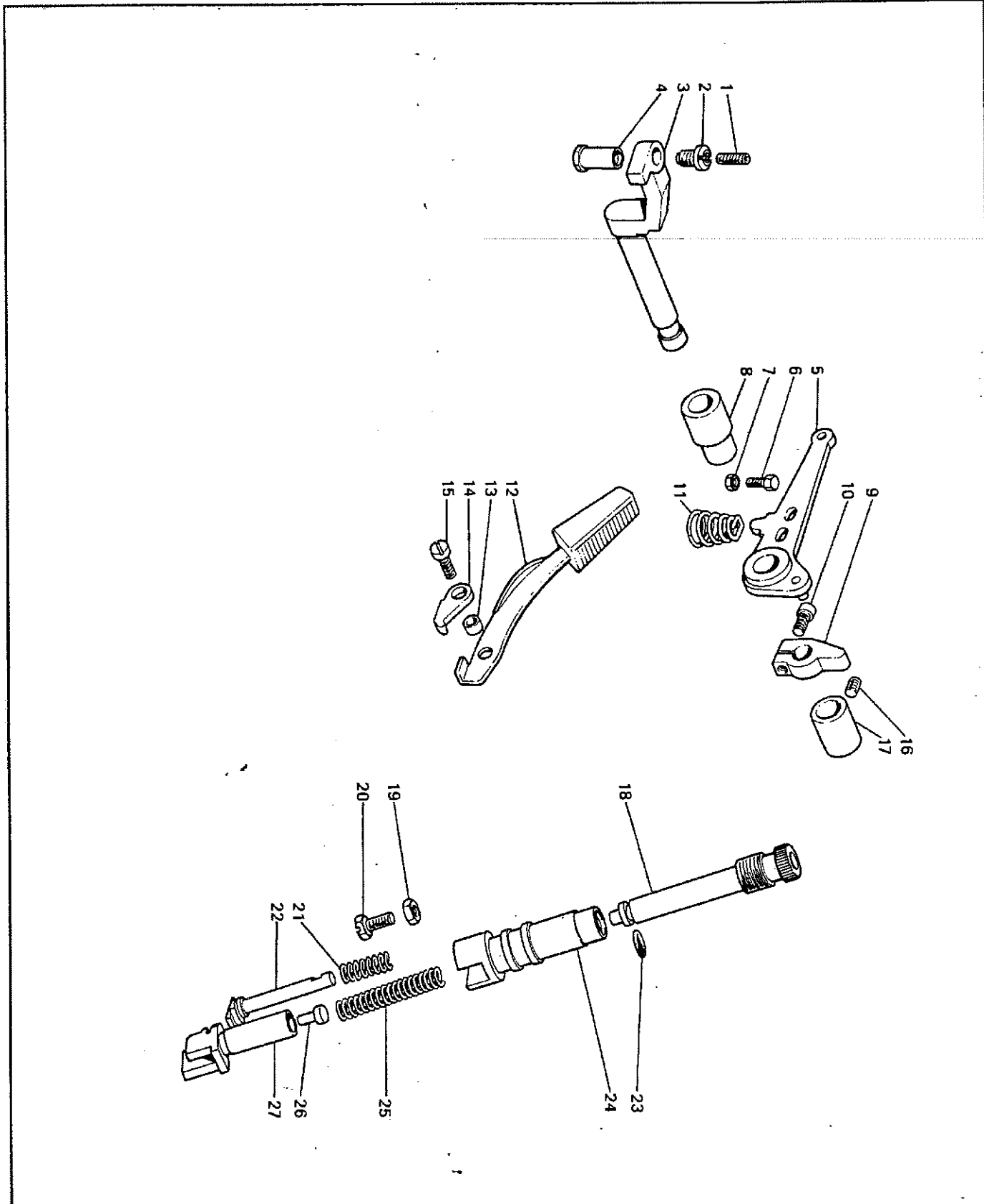
Rim® TAV. 8

| Fig. N. | Part. N. / Peces N. | Qr. |
|---------|---------------------|-----|
| 1 | 201128-0-10 | 1 |
| 2 | 211115-2-00 | 1 |
| 3 | 745810-2-00 | 2 |
| 4 | 211116-0-00 | 1 |
| 5 | 211114-0-00 | 1 |
| 6 | 211112-0-00 | 1 |
| 7 | 211110-0-00 | 1 |
| 8 | 211111-0-00 | 1 |
| 9 | 211119-0-00 | 1 |
| 10 | 727036-2-00 | 1 |
| 11 | 778204-0-00 | 8 |
| 12 | 778445-0-00 | 2 |
| 13 | 211129-4-00 | 2 |
| 14 | 211132-3-00 | 1 |
| 15 | 211109-4-00 | 1 |
| 16 | 744334-2-00 | 1 |
| 17 | 211113-0-00 | 1 |
| 18 | 209143-0-01 | 1 |
| 19 | 729013-2-00 | 4 |
| 20 | 313060-2-00 | 2 |
| 21 | 730022-2-00 | 1 |
| 22 | 211117-0-00 | 1 |
| 23 | 211142-2-01 | 1 |
| 24 | 211106-2-00 | 1 |
| 25 | 704213-2-00 | 2 |
| 26 | 722149-2-00 | 2 |
| 27 | 704653-0-00 | 1 |

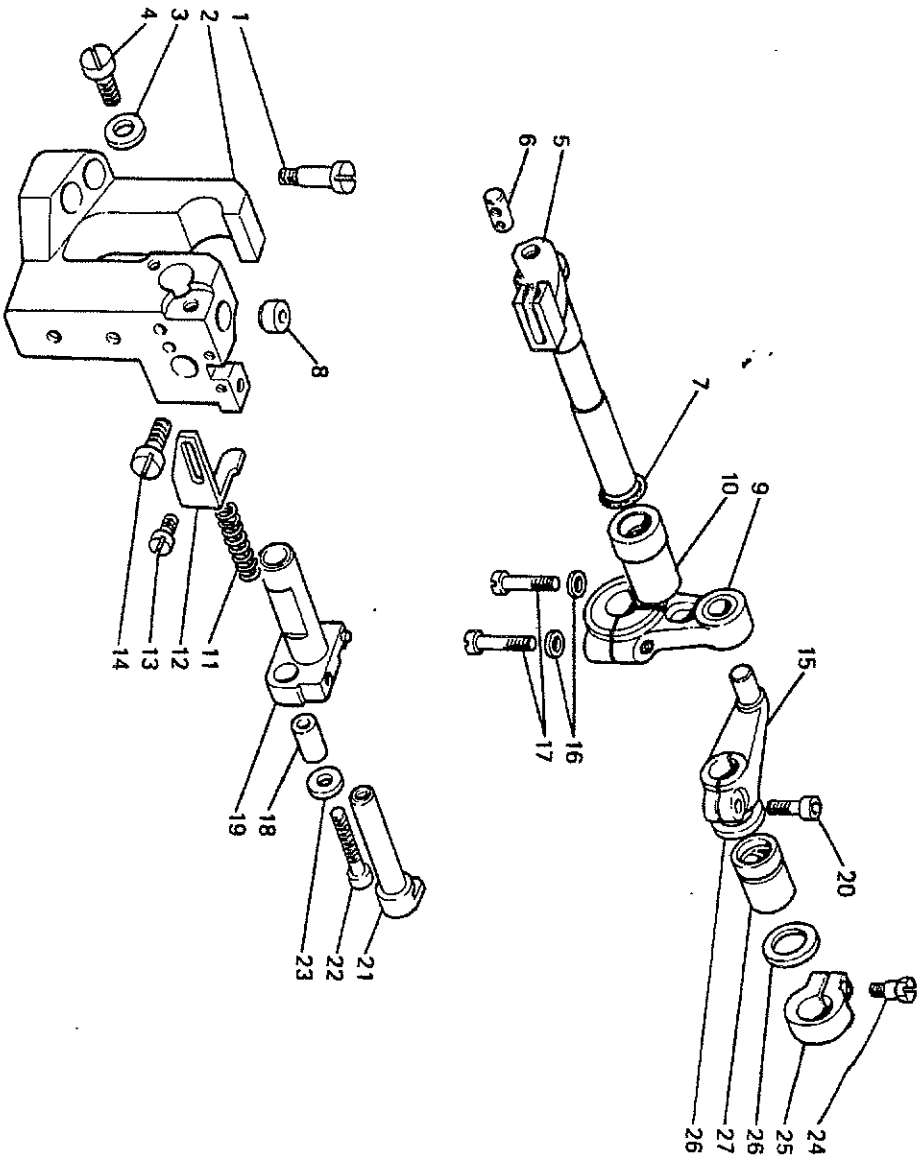
Rim[®] TAV. 9

GRUPPO PREMISTOFFA - PRESSER ASSEMBLY - GROUPE PIED PRESSEUR - STOFFPUECKER - GRUPO PRENSATELA

| Fig. N. | Part N. Place N. | Qt. |
|---------|---------------------|-----|
| 1 | 729031-2-00 | 1 |
| 2 | 202529-0-10 | 1 |
| 3 | 209500-0-10 | 1 |
| 4 | 206622-0-00 | 1 |
| 5 | 209501-0-12 | 1 |
| 6 | 740087-2-00 | 1 |
| 7 | 746021-2-00 | 1 |
| 8 | 209503-0-10 | 1 |
| 9 | 209522-2-00 | 1 |
| 10 | 740277-2-00 | 1 |
| 11 | 209521-0-01 | 1 |
| 12 | 209524-2-00 | 1 |
| 13 | 206637-0-00 | 1 |
| 14 | 206635-0-00 | 1 |
| 15 | 722421-2-00 | 1 |
| 16 | 745812-2-00 | 1 |
| 17 | 209504-0-10 | 1 |
| 18 | 211061-0-00 | 1 |
| 19 | 746007-2-00 | 1 |
| 20 | 202214-0-11 | 1 |
| 21 | 926273-0-01 | 1 |
| 22 | 207959-0-00 | 1 |
| 23 | 701006-0-00 | 1 |
| 24 | 211060-0-00 | 1 |
| 25 | 205021-0-10 | 1 |
| 26 | 207626-0-00 | 1 |
| 27 | 207625-0-00 | 1 |



PORTA COLTELLI - KNIVES HOLDER - PORTE COUTEAUX - MESSERTRAEGER - PORTA CUCHILLAS



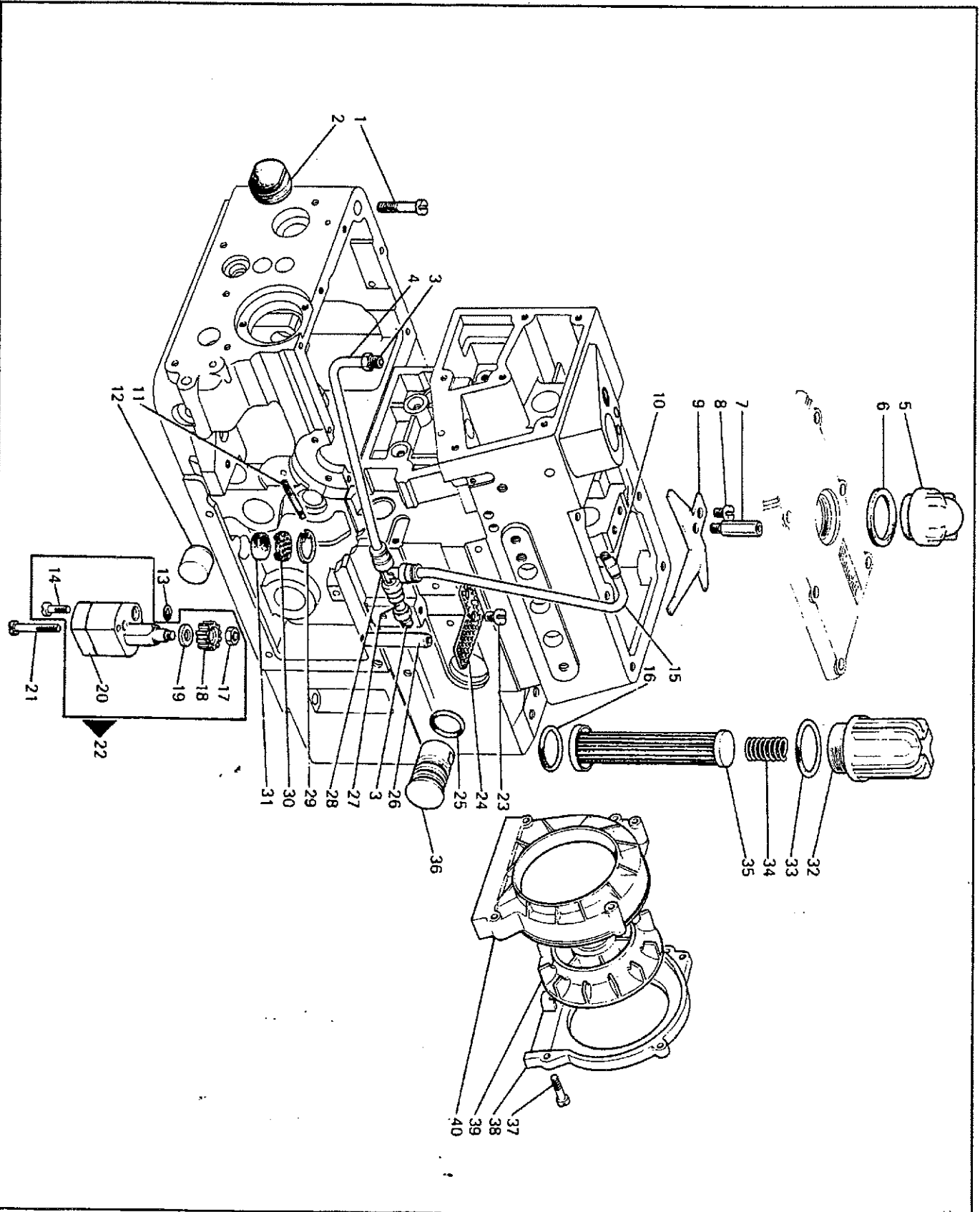
| Fig. N. | Part. N. Piece N. | Qt. |
|---------|----------------------|-----|
| 1 | 209587-0-00 | 2 |
| 2 | Z11031-Z-00 | 1 |
| 3 | 704409-2-00 | 1 |
| 4 | 74457-2-00 | 1 |
| 5 | 209562-0-00 | 1 |
| 6 | 202130-0-11 | 1 |
| 7 | 701114-0-00 | 1 |
| 8 | 207958-0-01 | 1 |
| 9 | 209569-2-02 | 1 |
| 10 | 209588-0-11 | 1 |
| 11 | 202128-0-10 | 1 |
| 12 | 209577-0-01 | 1 |
| 13 | 721443-2-00 | 1 |
| 14 | 742758-0-00 | 1 |
| 15 | 209581-2-01 | 1 |
| 16 | 704213-2-00 | 2 |
| 17 | 722149-2-00 | 2 |
| 18 | 202129-0-10 | 1 |
| 19 | 209574-2-00 | 1 |
| 20 | 744334-2-00 | 1 |
| 21 | 209579-0-01 | 1 |
| 22 | 722471-2-00 | 1 |
| 23 | 704406-2-00 | 1 |
| 24 | 300482-0-10 | 1 |
| 25 | 209589-2-00 | 1 |
| 26 | 704863-0-00 | 2 |
| 27 | 209583-0-01 | 1 |

Rim[®] TAV. 10

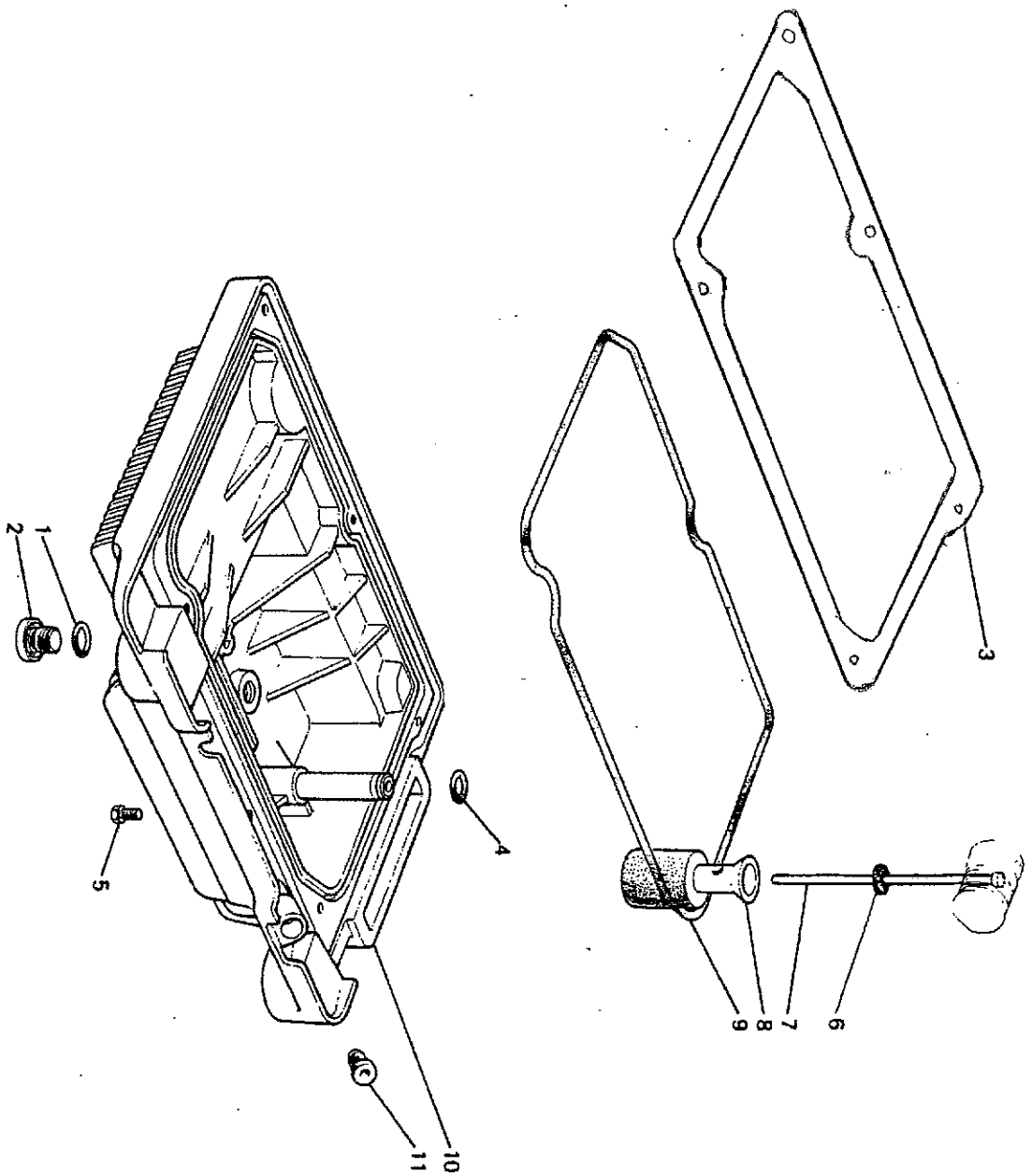
Rim® TAV. 11

LUBRIFICAZIONE - LUBRICATION - LUBRIFICATION - SCHMIERUNG - LUBRIFICACION

| Fig. N. | Part. N. Pezzo N. | Qt. |
|---------|----------------------|-----|
| 1 | 742086-2-00 | 5 |
| 2 | 211414-0-00 | 1 |
| 3 | 209641-0-00 | 2 |
| 4 | 790706-0-00 | 1 |
| 5 | 207973-0-01 | 1 |
| 6 | 701036-0-00 | 1 |
| 7 | 211063-0-00 | 1 |
| 8 | 741936-2-00 | 1 |
| 9 | 211062-0-00 | 1 |
| 10 | 926409-0-01 | 1 |
| 11 | 209383-0-00 | 1 |
| 12 | 209316-0-00 | 1 |
| 13 | 701004-0-00 | 1 |
| 14 | 741387-2-00 | 2 |
| 15 | 790716-0-00 | 1 |
| 16 | 701123-0-00 | 1 |
| 17 | 733507-2-00 | 1 |
| 18 | 206437-0-00 | 1 |
| 19 | 704813-0-00 | 1 |
| 20 | 206554-0-10 | 1 |
| 21 | 722511-2-00 | 2 |
| 22 | 206550-4-05 | 1 |
| 23 | 741925-2-00 | 1 |
| 24 | 209633-0-00 | 1 |
| 25 | 701031-0-00 | 2 |
| 26 | 209627-0-00 | 1 |
| 27 | 790700-0-00 | 1 |
| 28 | 941538-4-00 | 1 |
| 29 | 700116-0-00 | 1 |
| 30 | 315895-0-00 | 1 |
| 31 | 211128-0-00 | 1 |
| 32 | 211053-0-01 | 1 |
| 33 | 701042-0-00 | 1 |
| 34 | 922369-0-00 | 1 |
| 35 | 211052-0-00 | 1 |
| 36 | 211051-3-00 | 1 |
| 37 | 722143-2-00 | 4 |
| 38 | 206687-2-00 | 1 |
| 39 | 206690-2-00 | 1 |
| 40 | 206688-0-00 | 1 |



BACINELLA OLIO - OIL SUMP - RESERVOIR HUILE - OELWANNE - TANQUE ACETTE



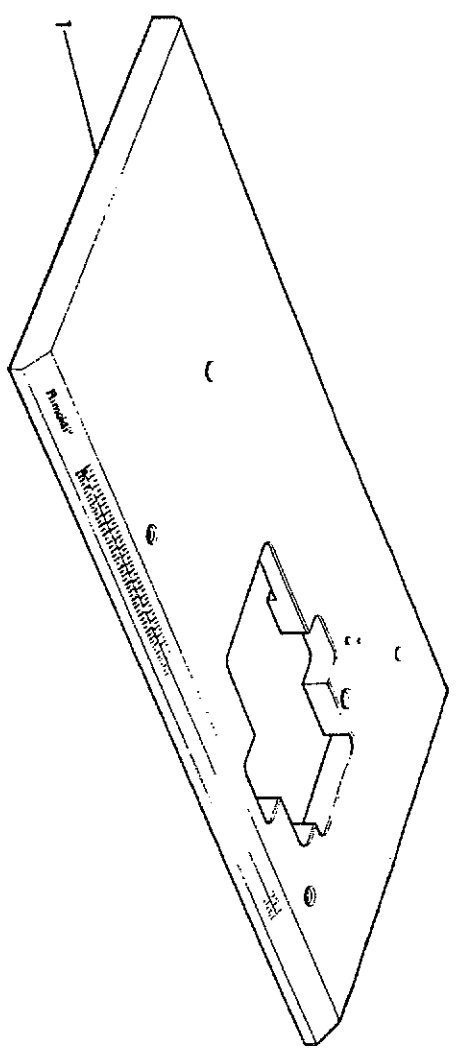
Rim® TAV. 12

| Fig. N. | Part. N. / Piece N. | Qt. |
|---------|---------------------|-----|
| 1 | 701015-0-00 | 1 |
| 2 | 321208-0-00 | 1 |
| 3 | 211011-0-00 | 1 |
| 4 | 701006-0-00 | 1 |
| 5 | 720411-2-00 | 1 |
| 6 | 701000-0-00 | 1 |
| 7 | 209624-0-11 | 1 |
| 8 | 206665-2-00 | 1 |
| 9 | 211013-0-00 | 1 |
| 10 | 209048-3-10 | 1 |
| 11 | 211675-0-00 | 1 |

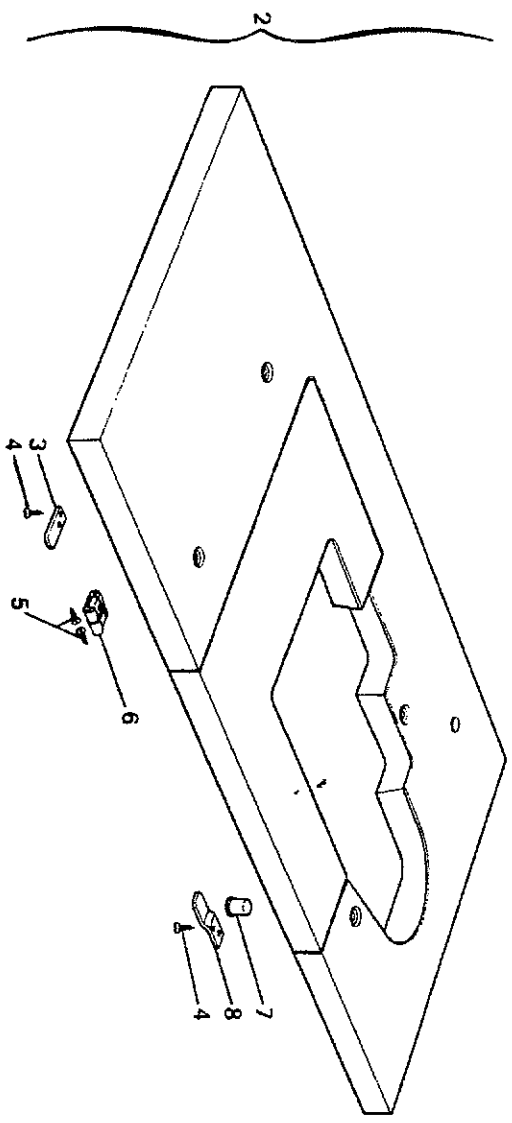
Rim[®] TAV. 13

TAVOLA - TABLE - TABEL - SCHNITT - MESA

| Fig. N. | Part. N. Pieça N. | Qt. |
|---------|----------------------|-----|
| 1 | 901112-2-01 | 1 |
| 2 | 901113-4-01 | 1 |
| 3 | 900288-0-00 | 1 |
| 4 | 732425-0-00 | 4 |
| 5 | 732429-0-00 | 12 |
| 6 | 900285-0-00 | 3 |
| 7 | 900286-0-00 | 1 |
| 8 | 900249-0-00 | 1 |

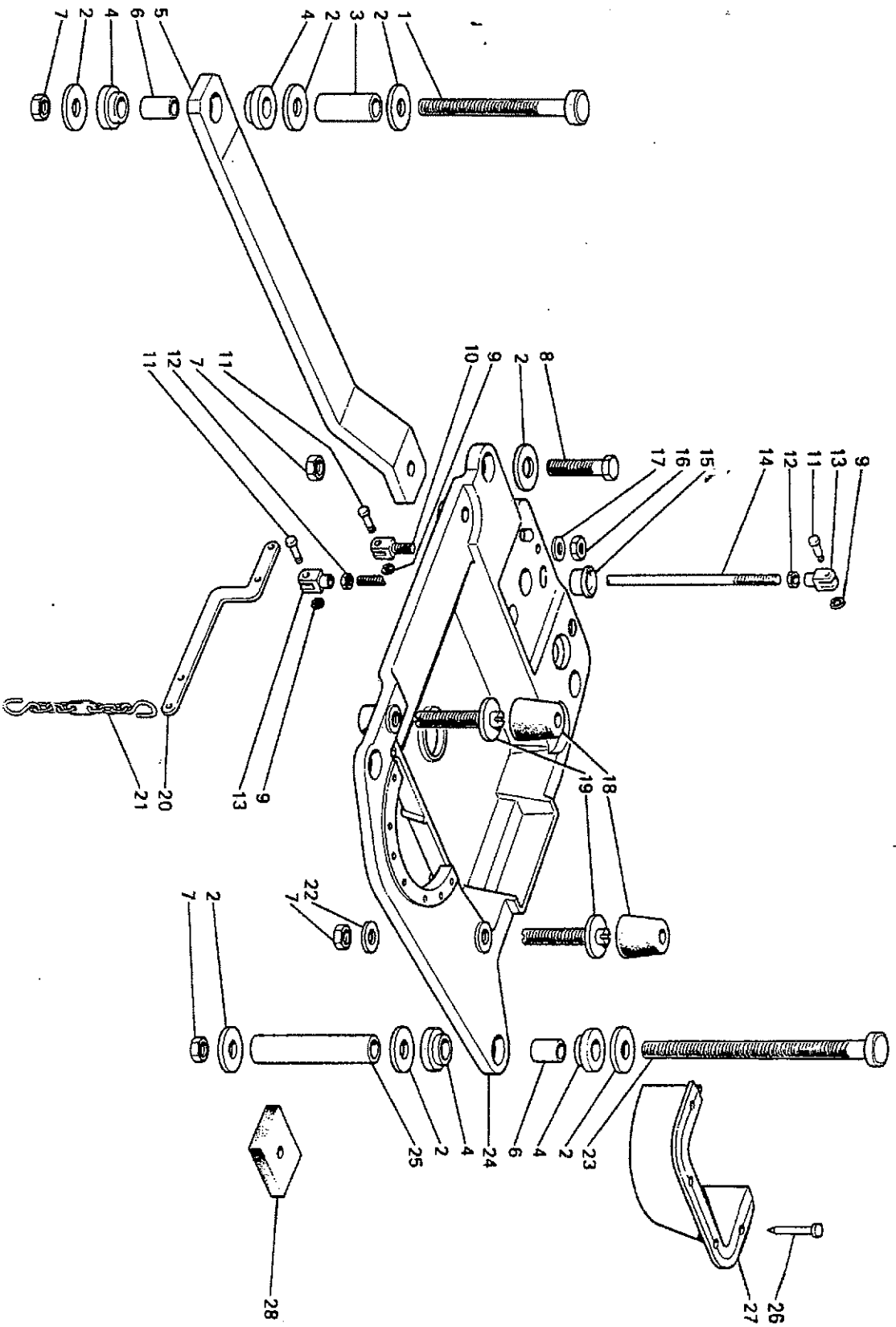


PIAZZAMENTO NORMALE
NORMAL SETTING
PLACEMENT NORMAL
NORMAL AUFSTELLUNG
COLOCACION NORMAL



PIAZZAMENTO INCASSATO
SUBMERGED SETTING
PLACEMENT ENCASTRE
VERSENKT AUFSTELLUNG
COLOCACION SUMERGIDA

PIAZZAMENTO NORMALE - NORMAL SETTING - PLACEMENT NORMAL - NORMAL AUFSTELLUNG - COLOCACION NORMAL



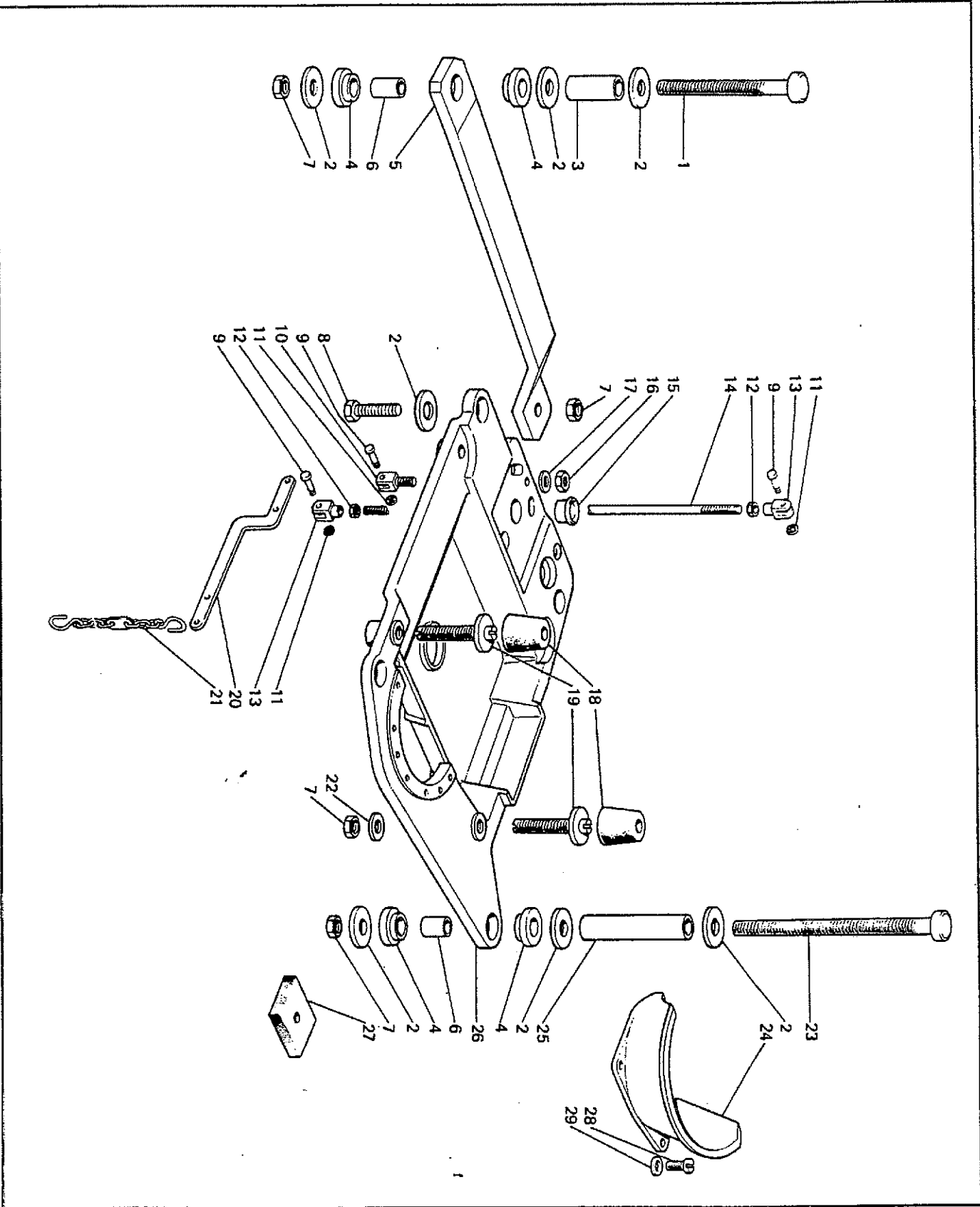
Rim[®] TAV. 14

| Fig. N. | Part. N. / Piece N. | Qt. |
|---------|---------------------|-----|
| 1 | 722912-2-00 | 2 |
| 2 | 704346-2-00 | 14 |
| 3 | 901152-0-00 | 2 |
| 4 | 901101-0-00 | 8 |
| 5 | 901151-0-00 | 2 |
| 6 | 901102-0-00 | 4 |
| 7 | 733008-2-00 | 10 |
| 8 | 720546-2-00 | 2 |
| 9 | 700205-0-00 | 3 |
| 10 | 990314-0-10 | 1 |
| 11 | 990311-0-10 | 3 |
| 12 | 746402-2-00 | 2 |
| 13 | 990310-0-10 | 2 |
| 14 | 990312-0-10 | 1 |
| 15 | 900204-0-10 | 1 |
| 16 | 746409-2-00 | 1 |
| 17 | 704424-2-00 | 1 |
| 18 | 990988-0-00 | 4 |
| 19 | 900694-0-11 | 4 |
| 20 | 991349-0-00 | 1 |
| 21 | 990179-4-11 | 1 |
| 22 | 704013-2-00 | 4 |
| 23 | 722920-2-00 | 2 |
| 24 | 991750-0-01 | 1 |
| 25 | 901153-0-00 | 2 |
| 26 | M488972020 | 1 |
| 27 | 991187-0-01 | 4 |
| 28 | 900203-0-10 | 1 |

Rim® TAV. 15

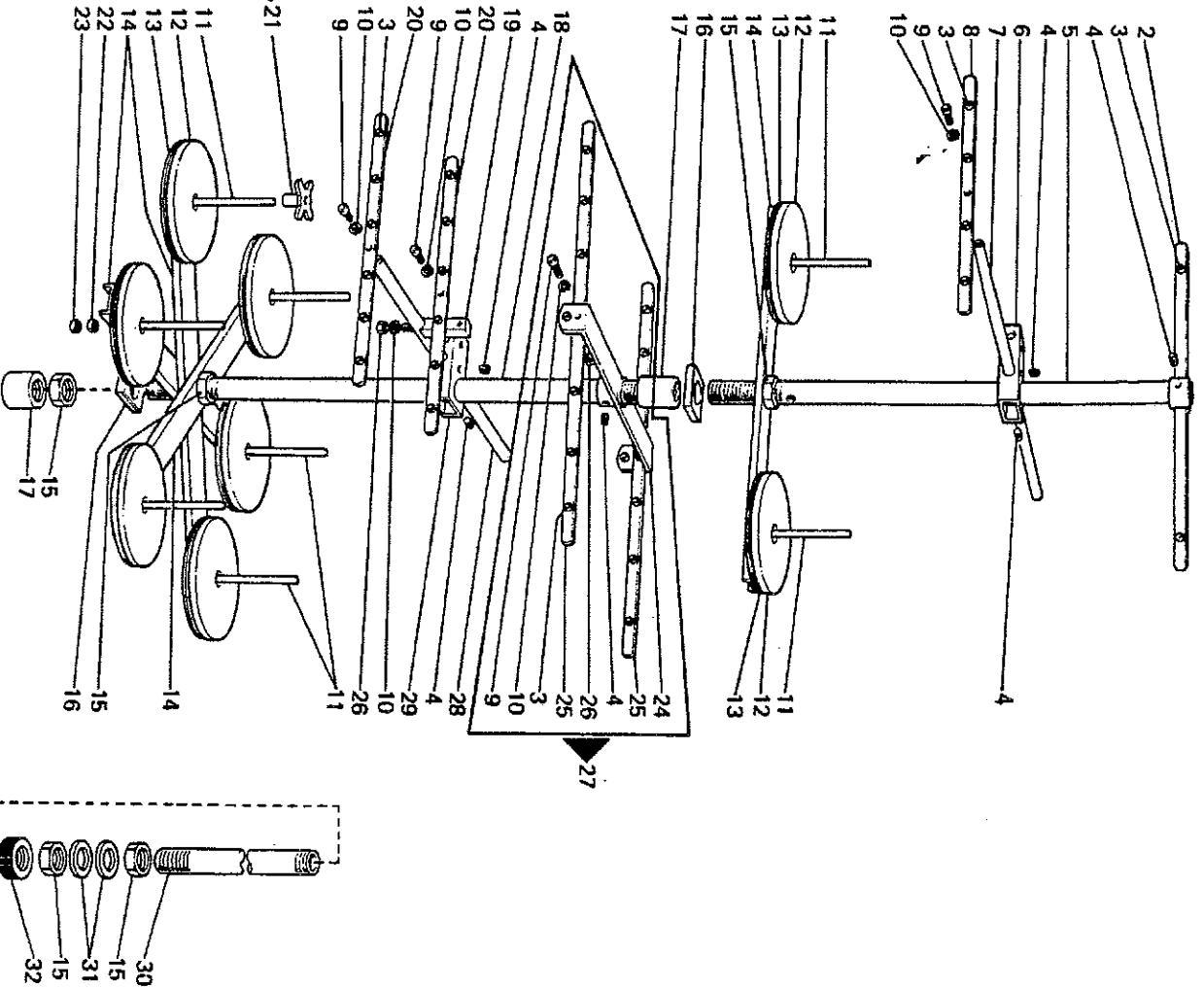
PIAZZAMENTO INCASSATO - SUBMERGED SETTING - PLACEMENT ENCASTRE - VERSENKTE AUFSTELLUNG - COLOCACION SUMERGIDA

| Fig. N. | Part N. Peça N. | Qt. |
|---------|--------------------|-----|
| 1 | 722912-2-00 | 2 |
| 2 | 704346-2-00 | 14 |
| 3 | 901152-0-00 | 2 |
| 4 | 901101-0-00 | 8 |
| 5 | 901151-0-00 | 2 |
| 6 | 901102-0-00 | 4 |
| 7 | 733008-2-00 | 10 |
| 8 | 720546-2-00 | 2 |
| 9 | 990311-0-10 | 3 |
| 10 | 990314-0-10 | 1 |
| 11 | 700205-0-00 | 3 |
| 12 | 746402-2-00 | 2 |
| 13 | 990310-0-10 | 2 |
| 14 | 990312-0-10 | 1 |
| 15 | 900204-0-10 | 1 |
| 16 | 746409-2-00 | 1 |
| 17 | 704424-2-00 | 1 |
| 18 | 990988-0-00 | 4 |
| 19 | 900694-0-11 | 4 |
| 20 | 991349-0-00 | 1 |
| 21 | 990179-4-11 | 1 |
| 22 | 704013-2-00 | 4 |
| 23 | 722920-2-00 | 2 |
| 24 | 991188-0-02 | 1 |
| 25 | 901153-0-00 | 1 |
| 26 | 991750-0-01 | 1 |
| 27 | 900203-0-10 | 4 |
| 28 | 721475-2-00 | 2 |
| 29 | 704409-2-00 | 2 |



PORTA BOBINE - BOBBIN CARRIER - PORTE BOBINES - GARNSTAENDER - PORTA CONOS

Rim[®] TAV. 16

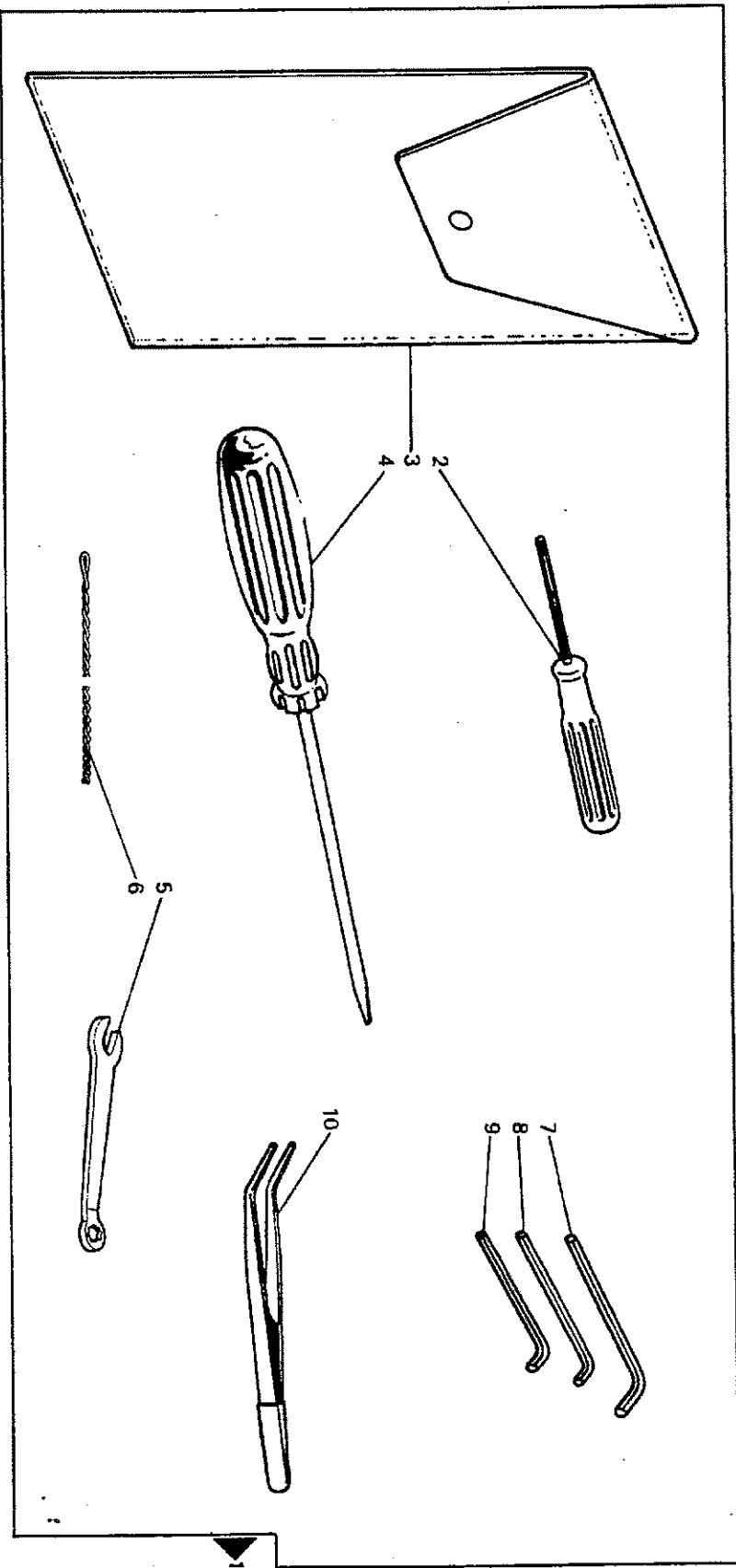


| Fig. N. | Part N. Place N. | Q. |
|---------|------------------|----|
| 1 | 991160-5-02 | 1 |
| 2 | 991197-4-00 | 1 |
| 3 | 991268-0-00 | 32 |
| 4 | 729034-2-00 | 6 |
| 5 | 991206-0-00 | 1 |
| 6 | 991278-2-00 | 1 |
| 7 | 991162-2-00 | 1 |
| 8 | 991108-2-01 | 1 |
| 9 | 722431-2-00 | 5 |
| 10 | 703005-0-00 | 6 |
| 11 | 991111-2-00 | 8 |
| 12 | 991179-0-01 | 8 |
| 13 | 991112-0-00 | 8 |
| 14 | 991199-0-00 | 4 |
| 15 | 733211-2-00 | 5 |
| 16 | 991172-0-00 | 4 |
| 17 | 991219-0-00 | 2 |
| 18 | 991192-0-00 | 1 |
| 19 | 991269-2-00 | 1 |
| 20 | 991166-2-01 | 2 |
| 21 | 991134-0-00 | 8 |
| 22 | 733508-2-00 | 8 |
| 23 | 925433-0-00 | 8 |
| 24 | 991246-2-00 | 1 |
| 25 | 991143-0-00 | 2 |
| 26 | 733806-0-00 | 3 |
| 27 | 991193-4-00 | 1 |
| 28 | 991265-2-00 | 1 |
| 29 | 991279-2-00 | 1 |
| 30 | 991267-0-00 | 1 |
| 31 | 704017-2-00 | 2 |
| 32 | 991383-0-10 | 1 |

Rim[®] TAV. 17

ACCESSORI - EQUIPMENT - ACCESSOIRES - ZUBEHOERE - ACCESORIOS

| Fig. N. | Part N. Peca N. | Qt. |
|---------|--------------------|-----|
| 1 | 991466-4-00 | 1 |
| 2 | 990474-0-11 | 1 |
| 3 | 991415-0-00 | 1 |
| 4 | 990723-0-00 | 1 |
| 5 | 991650-0-00 | 1 |
| 6 | 990223-0-02 | 1 |
| 7 | 990639-0-10 | 1 |
| 8 | 990685-0-10 | 1 |
| 9 | 990325-0-10 | 1 |
| 10 | 990176-0-10 | 1 |
| 11 | 990979-0-00 | 1 |
| 12 | 991512-0-00 | 1 |
| 13 | 722063-2-00 | 2 |
| 14 | 209020-0-00 | 1 |



Per l'ordinazione della bustina agli aghi c'è lo stesso simbolo dell'ago montato sulla testa.

To order packet of needles please specify symbol of needle fitted on machine.

Pour commander un sachet d'aiguilles donner le symbol de l'aiguille montée sur la tête.

Un die Nadelpackung zu bestellen. Man bitte das gleiche Nadelymbol wie die an Nadelkopf umgeben. Die Nadel zu geben.

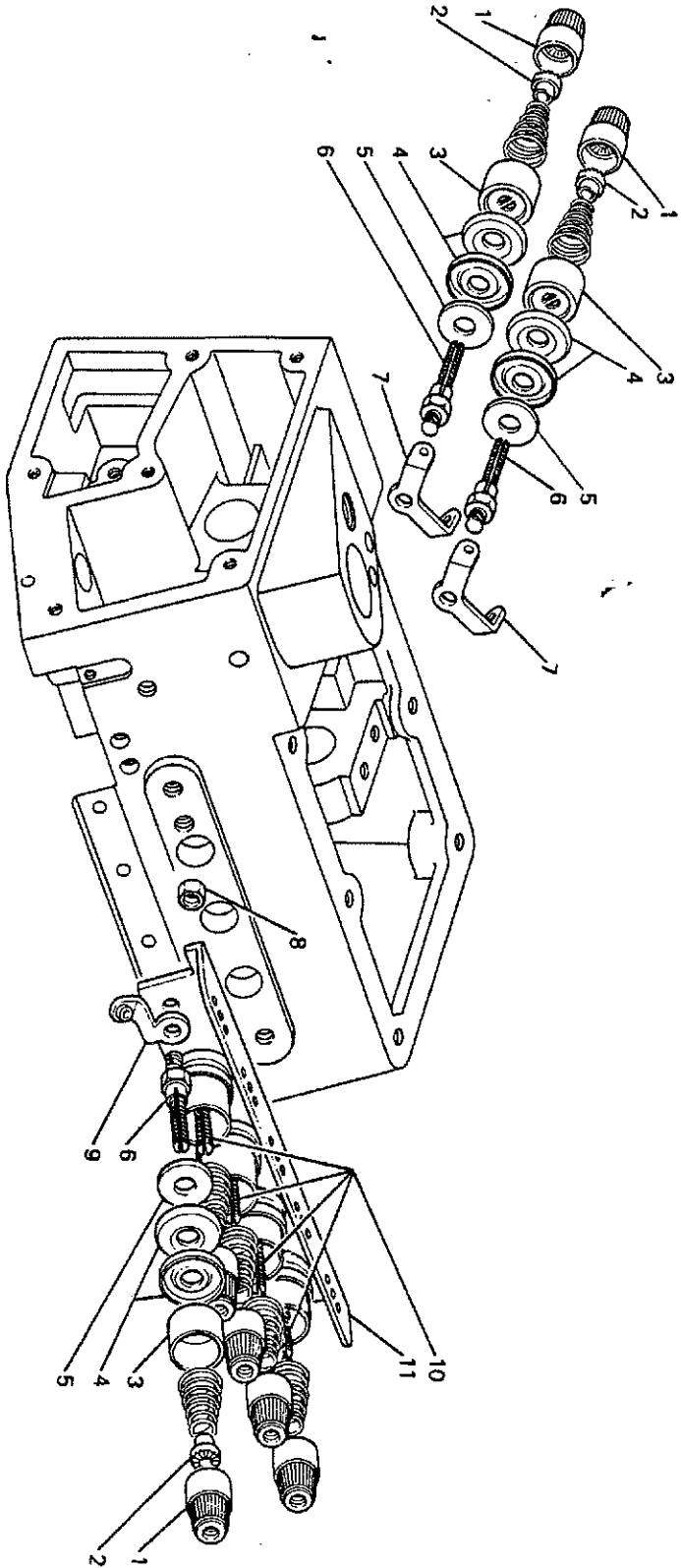
Para el pedido de un paquete de agujas, citar el mismo símbolo de la aguja montada en el cabezal.

GRUPPI DI COMPOSIZIONE - COMPOSITION KITS - GROUPES DE KIT - KIT GRUPPEN - GRUPOS DE COMPOSICION

TENSIONI
TENSIONS
TENSIONS
SPANNUNG
TENDEHILOS

WFS-6C

WFS-6C-006-00-0



Rim®

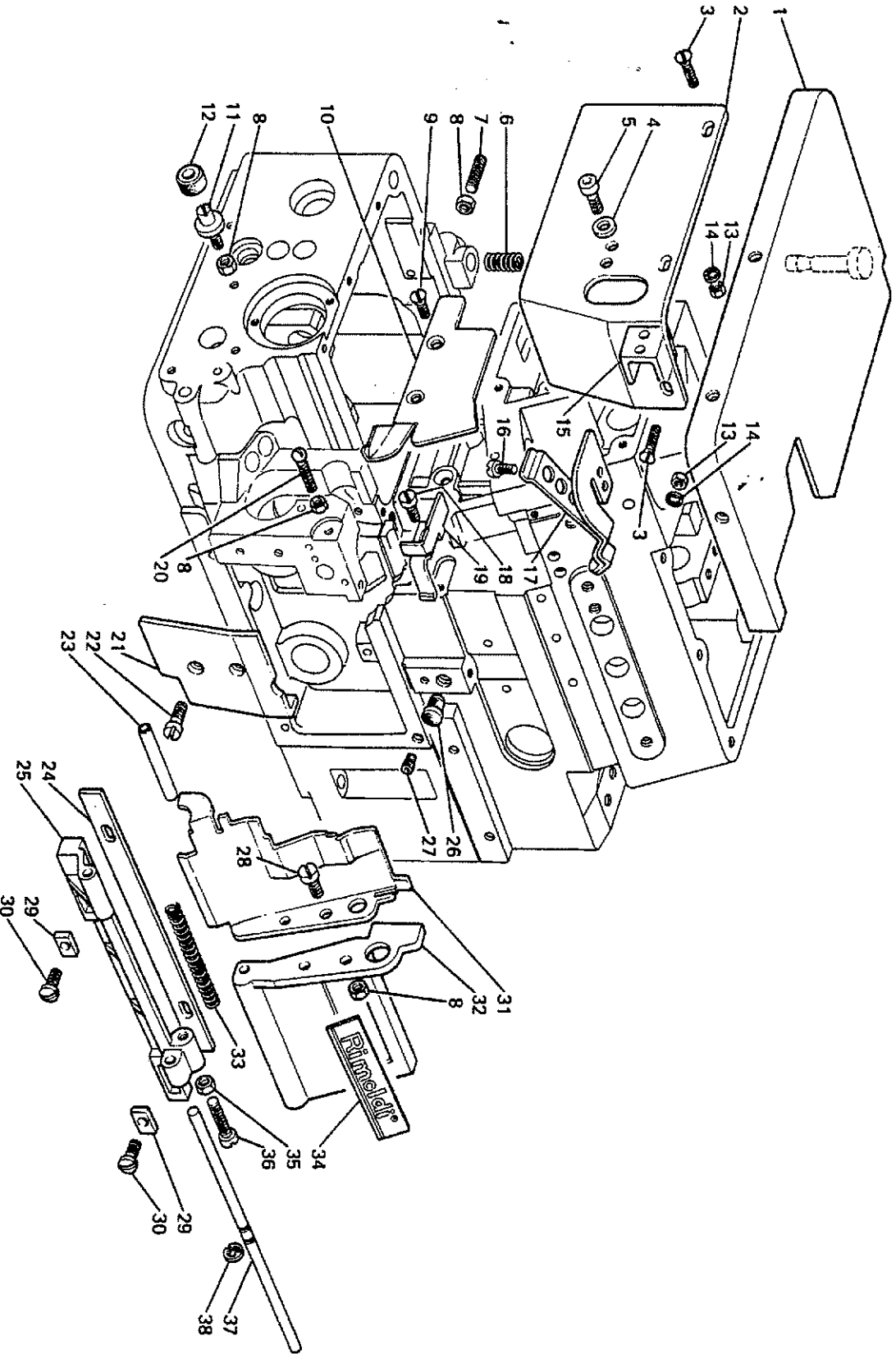
| Fig. N. | Part. N. Piece N. | Qt. |
|---------|-------------------|-----|
| 1 | 202556-0-11 | 7 |
| 2 | 202229-0-11 | 7 |
| 3 | 202556-0-01 | 7 |
| 4 | 300218-0-10 | 14 |
| 5 | 206754-0-00 | 7 |
| 6 | 208169-0-01 | 3 |
| 7 | 308503-0-01 | 2 |
| 8 | 746406-2-00 | 3 |
| 9 | 206713-2-00 | 1 |
| 10 | 206747-0-02 | 1 |
| 11 | 209753-0-00 | 1 |

GRUPPI DI COMPOSIZIONE - COMPOSITION KITS - GROUPES DE KIT - KIT GRUPPEN - GRUPOS DE COMPOSICION

CARTER
COVER
CARTER
CARTER
TAPADERAS

WFS-68

WFS-68-033-00-0



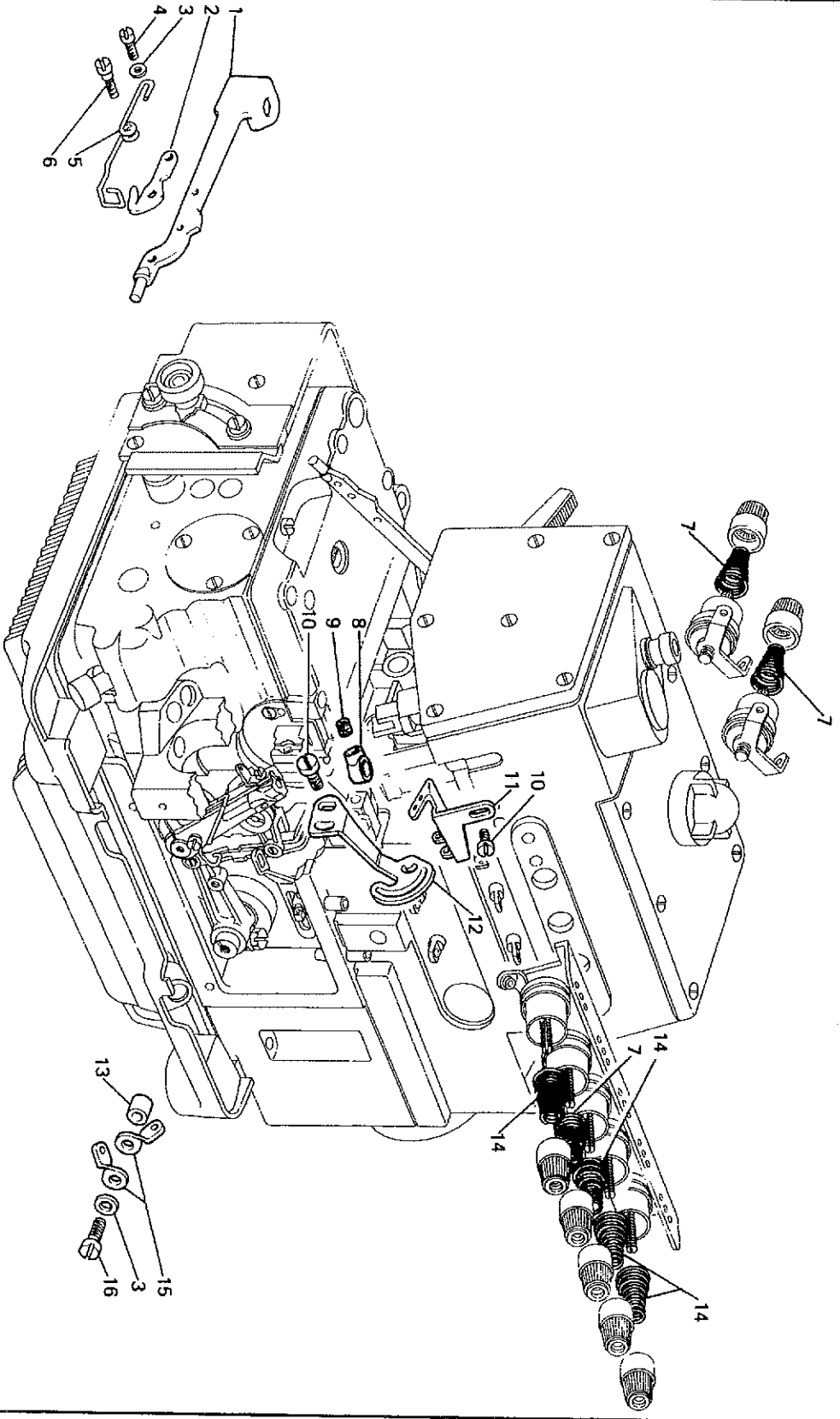
| Fig. N. | Part. N. Piece N. | Qt. |
|---------|-------------------|-----|
| 1 | 211936-2-00 | 1 |
| 2 | 211688-0-00 | 1 |
| 3 | 744651-0-00 | 3 |
| 4 | 704006-2-00 | 2 |
| 5 | 735011-2-00 | 2 |
| 6 | 211410-0-00 | 1 |
| 7 | 211409-0-00 | 1 |
| 8 | 746007-2-00 | 5 |
| 9 | 744730-2-00 | 2 |
| 10 | 211714-0-00 | 1 |
| 11 | 211694-0-00 | 1 |
| 12 | 211028-0-00 | 1 |
| 13 | 746003-0-00 | 3 |
| 14 | 703203-0-00 | 3 |
| 15 | 211697-0-00 | 3 |
| 16 | 721423-0-00 | 1 |
| 17 | 211703-2-00 | 2 |
| 18 | 721454-2-00 | 1 |
| 19 | 211686-0-00 | 1 |
| 20 | 211715-0-00 | 1 |
| 21 | 211692-0-00 | 1 |
| 22 | 741967-2-00 | 2 |
| 23 | 211682-0-00 | 1 |
| 24 | 211539-0-00 | 1 |
| 25 | 211582-0-00 | 1 |
| 26 | 202398-0-10 | 1 |
| 27 | 207856-0-00 | 1 |
| 28 | 200356-0-10 | 2 |
| 29 | 209720-0-00 | 2 |
| 30 | 722441-2-00 | 2 |
| 31 | 209685-0-00 | 1 |
| 32 | 211681-0-00 | 1 |
| 33 | 209683-0-00 | 1 |
| 34 | 211055-0-00 | 1 |
| 35 | 733806-2-00 | 1 |
| 36 | 722143-2-00 | 1 |
| 37 | 211583-0-01 | 1 |
| 38 | 700207-0-00 | 1 |

Rim®

GRUPPI DI COMPOSIZIONE - COMPOSITION KITS - GROUPES DE KIT - KIT GRUPPEN - GRUPOS DE COMPOSICION

KIT DI CAMPIONATURA
SETTING KIT
KIT DE ECHANTILLONAGE
KIT PROBEENTNAHME
KIT DE MUESTRARIO

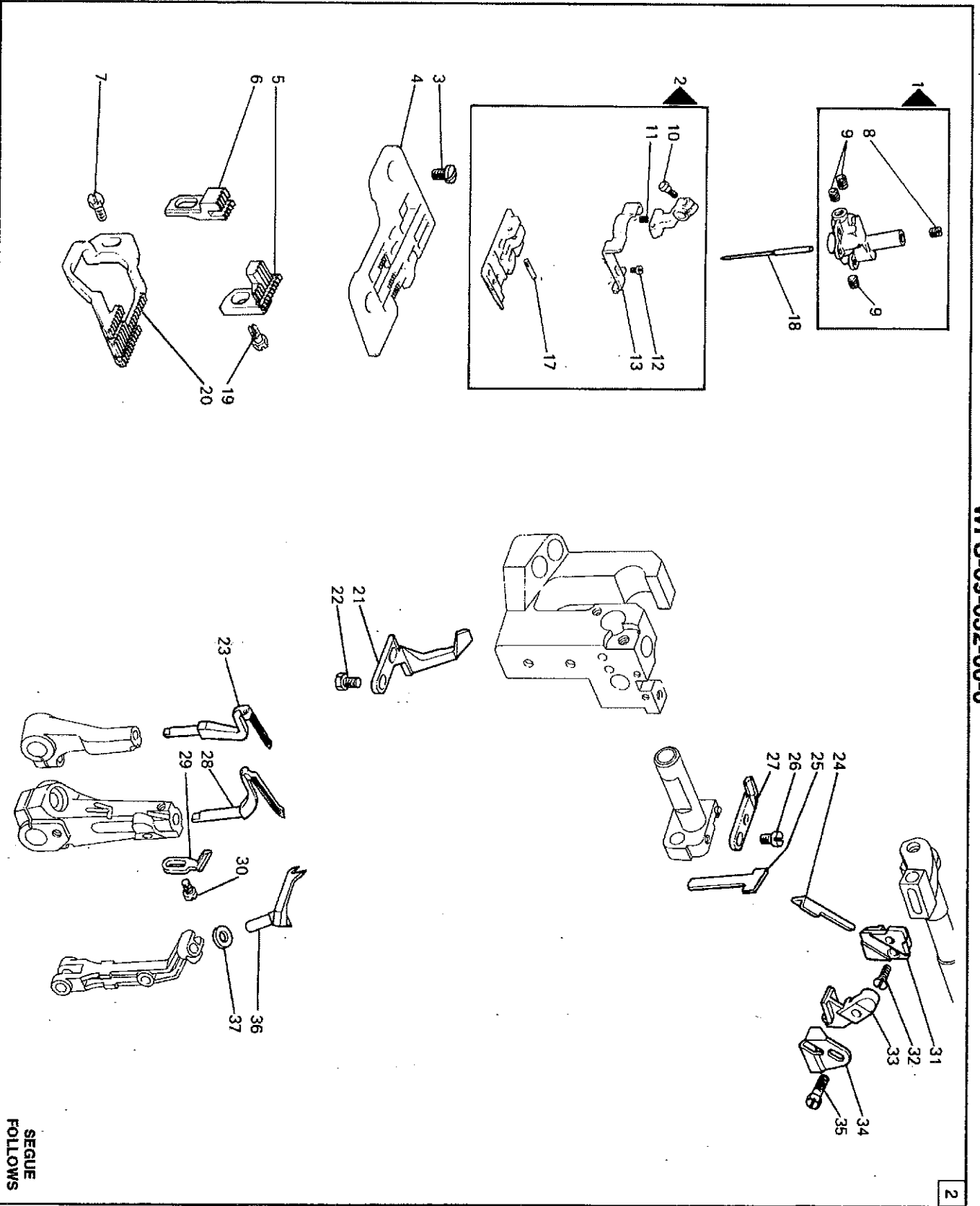
WFS-69



1

| Fig. N. | Part N. Piece N. | Qt. |
|---------|------------------|-----|
| 1 | 209946-0-00 | 1 |
| 2 | 208437-0-00 | 1 |
| 3 | 704104-2-00 | 2 |
| 4 | 741433-2-00 | 1 |
| 5 | 208947-0-00 | 1 |
| 6 | 743134-2-00 | 1 |
| 7 | 202681-0-10 | 3 |
| 8 | 211125-0-00 | 1 |
| 9 | 745812-2-00 | 1 |
| 10 | 741558-0-00 | 3 |
| 11 | 211105-0-00 | 1 |
| 12 | 211145-0-00 | 1 |
| 13 | 211742-0-00 | 1 |
| 14 | 202227-0-10 | 4 |
| 15 | 211748-0-00 | 2 |
| 16 | 722440-2-00 | 1 |

SEGUE
FOLLOWS



SEGUE
FOLLOWS

| Fig. N. | Part. N. Piece N. | Qt. |
|---------|-------------------|-----|
| 1 | 211750-2-00 | 1 |
| 2 | 211754-3-00 | 1 |
| 3 | 744742-2-00 | 2 |
| 4 | 211471-0-00 | 1 |
| 5 | 208432-0-10 | 1 |
| 6 | 208433-0-10 | 1 |
| 7 | 202489-0-10 | 1 |
| 8 | 727021-0-00 | 1 |
| 9 | 745810-2-00 | 3 |
| 10 | 204947-0-10 | 1 |
| 11 | 208164-0-00 | 1 |
| 12 | 741433-2-00 | 1 |
| 13 | 208435-0-00 | 1 |
| 17 | 208285-0-00 | 1 |
| 18 | 765515-6-12 | 1 |
| 19 | 202498-0-10 | 1 |
| 20 | 208431-0-10 | 1 |
| 21 | 209279-0-00 | 1 |
| 22 | 740230-2-00 | 2 |
| 23 | 209931-0-00 | 2 |
| 24 | 209351-0-00 | 1 |
| 25 | 207651-0-00 | 2 |
| 26 | 741531-2-00 | 1 |
| 27 | 208439-0-10 | 1 |
| 28 | 209264-0-01 | 1 |
| 29 | 209261-0-00 | 1 |
| 30 | 741538-2-00 | 2 |
| 31 | 207650-0-01 | 1 |
| 32 | 744573-0-00 | 1 |
| 33 | 207653-0-01 | 1 |
| 34 | 211137-0-00 | 1 |
| 35 | 207417-0-01 | 1 |
| 36 | 211247-0-00 | 1 |
| 37 | 211307-0-00 | 1 |

| | | | | | | | | | | | | | |
|-------------|-------|-------------|-----|-------------|----|-------------|-----|-------------|-------|-------------|-----------|-------------|---------|
| 100620-2-10 | 3 | 207602-0-00 | 1 | 209389-0-00 | 1 | 211013-0-00 | 12 | 211245-3-00 | 6 | 321055-0-00 | 4 | 704860-0-00 | 7 |
| 201128-0-10 | 5-6-8 | 207625-0-00 | 9 | 209390-0-00 | 3 | 211016-0-01 | 1 | 211250-2-00 | 5 | 321206-0-00 | 12 | 704863-0-00 | 10 |
| 202032-0-11 | 3 | 207626-0-00 | 9 | 209400-0-00 | 3 | 211017-0-01 | 1 | 211253-0-01 | 5-6 | 350555-0-00 | 4 | 704873-0-00 | 6 |
| 202128-0-10 | 10 | 207700-0-00 | 7 | 209401-2-01 | 3 | 211018-0-00 | 1 | 211254-3-00 | 6 | 700005-0-00 | 4 | 704885-0-00 | 5 |
| 202129-0-10 | 10 | 207719-0-00 | 3 | 209402-0-00 | 3 | 211019-0-00 | 1 | 211276-2-10 | 5 | 700012-0-00 | 3 | 704886-0-00 | 6 |
| 202130-0-11 | 10 | 207789-0-00 | 1 | 209403-2-00 | 3 | 211020-0-00 | 1 | 211280-4-10 | 6 | 700116-0-00 | 11 | 705008-0-00 | 7 |
| 202214-0-11 | 9 | 207948-0-00 | 4 | 209408-2-00 | 3 | 211031-2-00 | 10 | 211281-0-00 | 5-6 | 700205-0-00 | 14-15 | 705036-0-00 | 5-6 |
| 202394-0-10 | 3 | 207958-0-01 | 10 | 209411-0-00 | 3 | 211051-3-00 | 11 | 211290-0-00 | 7 | 700207-0-00 | 3-7 | 705208-0-00 | 3 |
| 202386-0-10 | 2 | 207959-0-00 | 9 | 209417-0-00 | 4 | 211052-0-00 | 11 | 211293-2-01 | 7 | 700208-0-00 | 4 | 720411-2-00 | 12 |
| 202387-0-10 | 2 | 207973-0-01 | 11 | 209442-0-00 | 4 | 211053-0-01 | 11 | 211295-0-00 | 4 | 700630-0-00 | 2 | 720546-2-00 | 14-15 |
| 202389-0-10 | 2 | 208015-0-00 | 5 | 209443-0-10 | 4 | 211054-0-00 | 11 | 211375-0-00 | 4 | 701000-0-00 | 12 | 721424-2-00 | 1 |
| 202408-0-10 | 4-7 | 208220-0-00 | 1 | 209445-2-02 | 4 | 211056-0-00 | 1 | 211381-0-00 | 4 | 701004-0-00 | 4-7-11 | 721443-2-00 | 10 |
| 202490-0-10 | 3 | 209020-0-00 | 17 | 209447-0-02 | 4 | 211060-0-00 | 9 | 211382-2-00 | 3 | 701005-0-00 | 6 | 721473-2-00 | 2 |
| 202529-0-10 | 9 | 209022-0-00 | 1 | 211448-4-00 | 4 | 211061-0-00 | 9 | 211385-0-00 | 4 | 701006-0-00 | 4-9-12 | 721475-2-00 | 3-15 |
| 203135-2-10 | 1 | 209048-3-10 | 12 | 209449-0-00 | 4 | 211062-0-00 | 11 | 211386-2-00 | 4 | 701007-0-00 | 3 | 721883-0-00 | 5 |
| 204122-0-10 | 2 | 209109-0-00 | 2 | 209471-0-00 | 4 | 211063-0-00 | 11 | 211387-2-00 | 3 | 701015-0-00 | 12 | 722063-2-00 | 2-4-17 |
| 204757-0-11 | 2 | 209110-4-00 | 2 | 209501-0-12 | 9 | 211079-2-00 | 2 | 211394-3-00 | 3 | 701031-0-00 | 11 | 722089-2-00 | 5-6 |
| 205021-0-10 | 9 | 209111-0-00 | 2 | 209500-0-10 | 9 | 211104-0-00 | 2 | 211405-0-00 | 3 | 701036-0-00 | 11 | 722089-2-00 | 11 |
| 206091-4-02 | 1 | 209143-0-01 | 8 | 209503-0-10 | 9 | 211106-2-00 | 8 | 211406-0-00 | 3 | 701042-0-00 | 11 | 722143-2-00 | 11 |
| 206437-0-00 | 11 | 209146-0-00 | 2 | 209504-0-10 | 9 | 211109-4-00 | 8 | 211407-0-00 | 3 | 701114-0-00 | 10 | 722149-2-00 | 8-10 |
| 206543-0-01 | 2 | 209185-0-00 | 2 | 209521-0-01 | 9 | 211110-0-00 | 8 | 211412-0-00 | 1 | 701116-0-00 | 2 | 722421-2-00 | 9 |
| 206550-4-05 | 11 | 209200-0-00 | 7 | 209522-2-00 | 9 | 211111-0-00 | 8 | 211414-0-00 | 11 | 701123-0-00 | 11 | 722422-2-00 | 3 |
| 206554-0-10 | 11 | 209258-0-00 | 5 | 209524-2-00 | 9 | 211112-0-00 | 8 | 211416-0-00 | 1 | 701133-0-00 | 2 | 722431-2-00 | 16 |
| 206606-0-00 | 7 | 209270-2-02 | 5-6 | 209561-0-01 | 10 | 211113-0-00 | 8 | 211418-0-00 | 1 | 701139-0-00 | 1 | 722441-2-00 | 1 |
| 206622-0-00 | 9 | 209280-0-00 | 7 | 209569-2-00 | 10 | 211114-0-00 | 8 | 211427-0-00 | 4 | 703005-0-00 | 16 | 722443-2-00 | 7 |
| 206635-0-00 | 9 | 209282-0-00 | 7 | 209574-2-00 | 10 | 211115-2-00 | 8 | 211444-0-00 | 4 | 703405-0-00 | 1 | 722452-2-00 | 7 |
| 206637-0-00 | 9 | 209283-0-00 | 7 | 209577-0-01 | 10 | 211116-0-00 | 8 | 211612-0-01 | 3 | 703802-0-00 | 4 | 722461-2-00 | 2 |
| 206665-2-00 | 12 | 209296-0-00 | 7 | 209579-0-00 | 10 | 211117-0-00 | 8 | 211675-0-00 | 12 | 704013-2-00 | 11-14-15 | 722471-2-00 | 10 |
| 206687-2-00 | 11 | 209297-0-00 | 7 | 209581-2-01 | 10 | 211119-0-00 | 8 | 211683-0-00 | 1 | 704017-2-00 | 16 | 722511-2-00 | 11 |
| 206688-0-00 | 11 | 209299-2-00 | 7 | 209583-0-01 | 10 | 211222-0-00 | 1 | 211690-0-00 | 1 | 704106-2-00 | 1 | 722512-2-00 | 14-15 |
| 206689-0-01 | 2 | 209300-0-00 | 7 | 209588-0-11 | 10 | 211233-0-00 | 1 | 211696-4-00 | 1 | 704207-2-00 | 1 | 722920-2-00 | 14-15 |
| 206690-2-00 | 11 | 209301-2-00 | 7 | 209589-2-00 | 10 | 211238-0-00 | 11 | 211699-0-00 | 1 | 704213-2-00 | 8-10 | 724032-0-00 | 3 |
| 206692-0-00 | 2 | 209303-0-00 | 7 | 209610-0-01 | 2 | 211239-4-00 | 8 | 211699-0-00 | 1 | 704236-2-00 | 2 | 724430-2-00 | 4 |
| 206714-2-00 | 1 | 209307-0-00 | 7 | 209615-0-01 | 12 | 211242-2-01 | 8 | 211741-0-00 | 1 | 704302-4-00 | 7 | 725032-0-00 | 1 |
| 206740-0-00 | 1 | 209308-0-00 | 7 | 209624-0-11 | 12 | 211208-4-00 | 6 | 211745-0-00 | 1 | 704306-2-00 | 3 | 727036-2-00 | 5-6-8 |
| 206796-0-00 | 3 | 209309-2-01 | 7 | 209627-0-00 | 11 | 211209-0-01 | 5-6 | 211937-0-00 | 1 | 704314-2-00 | 4-7 | 727203-0-00 | 2 |
| 206798-0-00 | 3 | 209316-0-00 | 11 | 209633-0-00 | 11 | 211213-0-00 | 6 | 300482-0-10 | 10 | 704346-2-00 | 14-15 | 728232-0-00 | 4 |
| 206860-0-01 | 2 | 209320-2-00 | 7 | 209641-0-00 | 11 | 211216-2-00 | 6 | 304172-0-10 | 7 | 704406-2-00 | 10 | 729012-2-00 | 1-4 |
| 207219-0-10 | 1 | 209320-2-00 | 2 | 209693-0-00 | 3 | 211219-0-00 | 6 | 304195-0-10 | 7 | 704409-2-00 | 3-4-10-15 | 729013-2-00 | 3-5-6-8 |
| 207220-0-10 | 1 | 211431-0-00 | 4 | 209752-0-00 | 3 | 211219-2-00 | 6 | 307651-0-00 | 7 | 704424-2-00 | 14-15 | 729031-2-00 | 4-9 |
| 207221-2-10 | 1 | 209379-0-00 | 4 | 209760-0-00 | 1 | 211220-2-00 | 5 | 310724-0-00 | 6 | 704630-0-00 | 11 | 729033-2-00 | 4 |
| 207224-0-10 | 1 | 209383-0-00 | 11 | 209935-0-00 | 7 | 211229-0-00 | 6 | 311067-0-00 | 1 | 704813-0-00 | 3 | 729034-2-00 | 2-16 |
| 207225-0-10 | 1 | 209388-0-01 | 3 | 321181-0-00 | 2 | 211342-2-00 | 2 | 313060-2-00 | 5-6-8 | 704829-0-00 | 7 | 729064-2-00 | 6 |
| | | | | | | | | 315895-0-00 | 11 | 704841-0-00 | 7 | 730022-2-00 | 7-8 |
| | | | | | | | | | | 704853-0-00 | 3-8 | 732425-0-00 | 13 |

SOLO I PEZZI DI RICAMBIO ORIGINALI Rimoldi® MARCATI Rim GARANTISCONO EFFETTIVA INTERCambiABILITA' FUNZIONALITA'; DURATA.

Rimoldi® ORIGINAL SPARE PARTS, MARKED Rim ARE THE ONLY ONES WHICH GUARANTEE INTERCHANGEABILITY, FUNCTIONALITY, AND LONG MACHINE LIFE.

EXCLUSIVEMENT LES PIECES DE RECHANGE ORIGINALES Rimoldi® DI MARQUEES Rim GARANTISSENT UNE INTERCHANGEABILITE, UN CARACTERE FONCTIONNEL, UNE DUREE EFFECTIFS.

NUR DIE MIT Rim MARKIERTEN Rimoldi®-ORIGINALERSATZTEILE GARANTIEREN EINE EFFEKTIVE AUSTAUSCHBARKEIT, ZWECKENTSPRECHENDEHEIT, LEBENSDAUER.

SOLO EL EMPLEO EXCLUSIVO DE REPUESTOS Rimoldi® DI MARCADOS Rim ASEGURAN LA CALIDAD DE INTERCambiABILIDAD, LA FUNCIONALIDAD Y LA DURACION.

Rimoldi® & CF

Rimoldi & CF srl

Direzione, sede operativa e amministrativa

Headquarters: Corso C. Colombo, 46 - 21013 Gallarate - Italy

Cap. Soc. € 10.000,00 i.v.

N. Registro Imprese CCAIA: VA0319760 - P.I. - VAT: 02394590026

Sede legale - L.go Carnusci, 5 - 21013 Gallarate

ph. +39033175071

fax +390331750781 - Vendite - Sales

fax +390331750780 - Acquisti - Purchasing

fax +390331750782 - Amministrazione - Administration

www.rimoldiect.com; info@rimoldiect.com