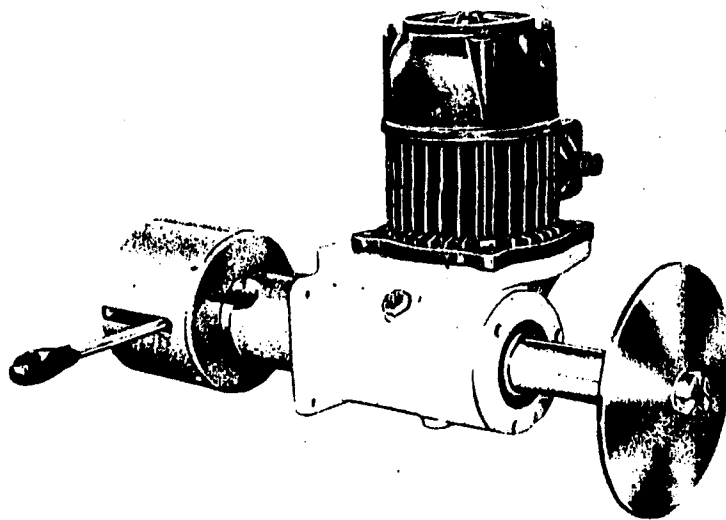


# TMF



*Rumoldi*

n. 620

fig. 2

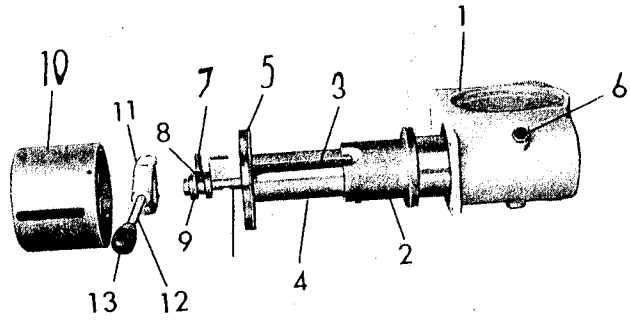


fig. 1

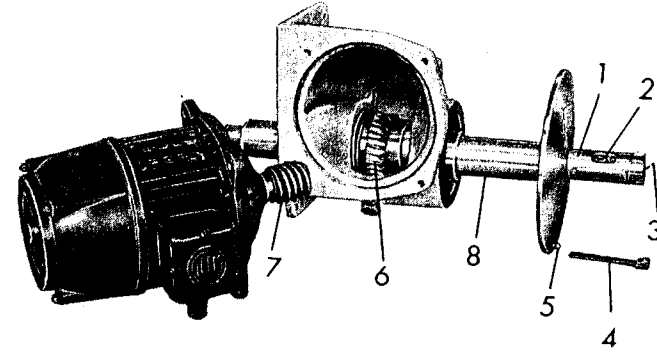


fig. 3

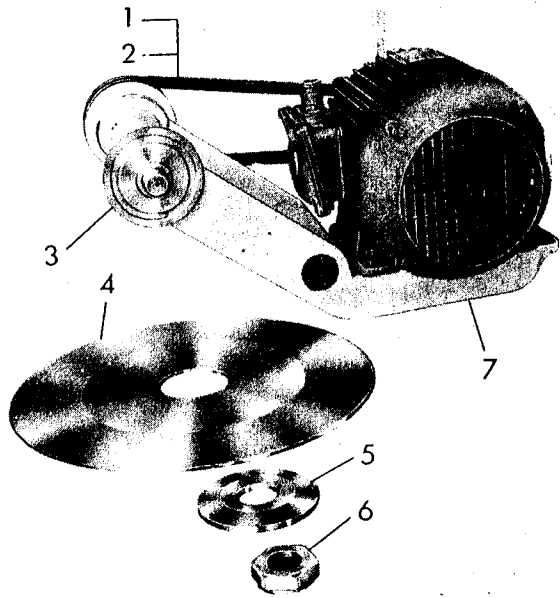
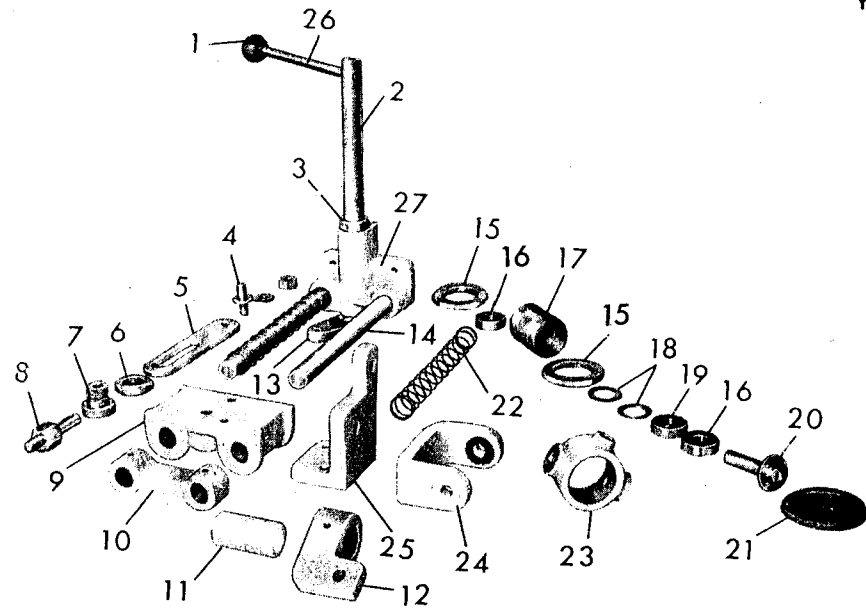
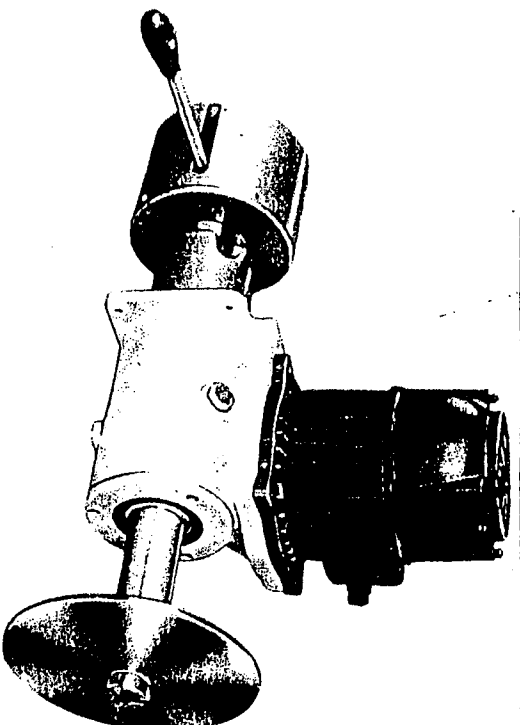


fig. 4





N. rifer.	N. disegno	Descrizione	Quan.	Ref. N.	Design N.	Description	Quan.
1	6213	pinza	1	6213		pliers	1
2	6230	chiavetta di trascinamento pinza	1	6230		pliers' pulling sunk key	1
3	6224	perno per espansione naselli	1	6224		clamp expansion pivot	1
4	6214	nasello per pinza	3	6214		pliers' clamp	3
5	..	sfera 1/4"	3	..		ball 1/4"	3
6	6209	ingranaggio per riduttore	1	6209		reducer gear	1
7	6212	vite senza fine comando riduttore	1	6212		worm screw reducer control	1
8	6206	piatto porta pinza	1	6206		pliers' holder plate	1
1	6201	corpo riduttore	1	6201		reducer	1
2	6202	boccola porta cuscinetto	2	6202		bearing holder bushing	1
3	6221	astina graduata	1	6221		graduated rod	1
4	6207	boccola porta astina graduata	1	6207		graduated rod holder bushing	1
5	6203	flangia porta forcilla	1	6203		flange porta forcilla	1
6	6226	toppo per carica e scarica olio	2	6226		oil charging and drain top	2
7	6219	vite regolazione tassello comando pinza	2	6219		small block pliers' control adjusting screw	2
8	6215	tassello comando pinza	2	6215		pliers' control small block	2
9	6211	rochetto comando pinza	2	6211		pliers' control spacker wheel	2
10	6225	coperechio di chiusura	1	6225		closing cap	1
11	6204	forcilla comando pinza	1	6204		pliers' control fork	1
12	6218	leva per forcilla comando pinza	1	6218		lever for pliers' control fork	1
13	..	impugnatura bakelite	1	..		bakelite handle	1
1	13 x 813	cinghia comando lama per TMF	3	13 x 813		belt for 1M <sup>r</sup> blade control	3
2	13 x 838	cinghia comando lama per TMF / RN	2	13 x 838		belt for TMF / RN blade control	2
3	6302	albero porta lama	1	6302		shaft for blade holder	1
4	6314	lama Ø 360 spessore 3,5 foro 70	4	6314		blade Ø 360 thickness 3,5 hole 70	4
5	6307	flangia per bloccaggio lama	1	6307		flange for blade locking	1
6	6315	dado per bloccaggio lama	5	6315		blade locking nut	5
7		supporio motore	6			blade locking nut	6
1	back: Ø 30	perno comando affilatore	1	back: Ø 30		sharpeners' control knob	1
2	6404	perno comando affilatore	2	6404		Sharpeners' control pivot	1
3	6403	anello	1	6403		ring	1
4	6406	perno comando biella	4	6406		connecting rod's control lever	1
5	6407	biella per affilatore	1	6407		sharpeners' s connecting rod	1
6	6410	dado per bloccaggio biella	5	6410		connecting rod's locking nut	1
7	6409	boccola per bloccaggio biella	6	6410		bushing for connecting rod's locking	1
8	6408	perno di collegamento	7	6408		connection pivot	1
9	6413	parte scorrevole	9	6413		smooth running part	1
10	6414	traversina di collegamento	1	6414		connection sleeper	1
11	6419	mala cilindrica	1	6419		cylindrical grinder	1
12	6418	supporio per mala cilindrica	1	6418		cylindrical grinder support	1
13	6405	leva comando affilatore	1	6405		sharpeners' s control lever	1
14	6411	perno per guida parte scorrevole	13	6405		sharpeners' s control lever	1
15	6423	ghiera per regolazione molla	2	6411		pivot for running part guide	2
16	6201 / 2	cuscinetto schematico	15	6423		spring regulation ring	2
17	6422	boccola porta mola	2	6201 / 2		shilded bearing	2
18	6002	molla a tazza	16	6201 / 2		grinder holder bushing	2
19	7201	cuscinetto porta spinta	17	6422		cup spring	1
20	6420	perno per mola	18	6002		thrust bearing	2
21	6421	molla per affilatrice	19	7201		grinder pivot	1
22	6412	supporio per boccola affilatore	20	6420		sharpeners' s grinder	1
23	6417	forcella sostegno affilatore	21	6421		return springs	1
24	6416	scuadra sostegno affilatore	22	6417		support for sharpeners' s bushing	2
25	6415	leva comando affilatore	23	6416		fork for sharpeners' s stand	1
26	6401	supporio	24	6415		gusset for sharpeners' s stand	1
27	6402	supporio	25	6401		sharpeners' control lever	1
			26	6402		support	1
			27	6402		support	1

fig.1

fig.2

fig.3

fig.4

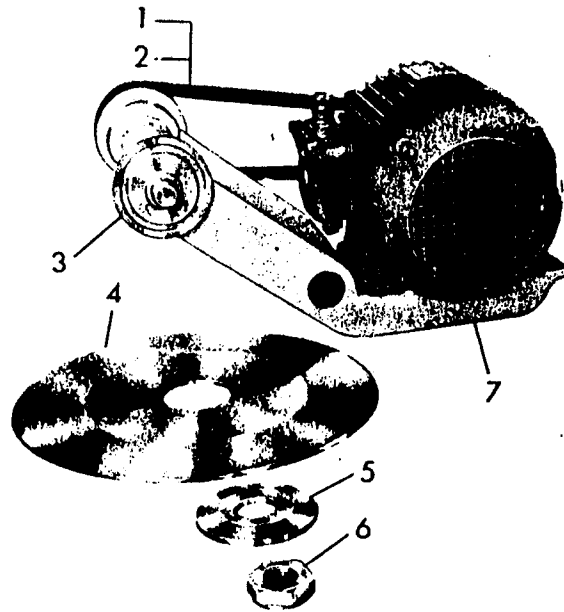


fig.3

N. Rif.	N. DISEGNO	Quant.
<b>fig. 3</b>		
1	13 x 813	3
2	13 x 838	3
3	6302	1
4	6314	1
5	6307	1
6	6315	1
7		1

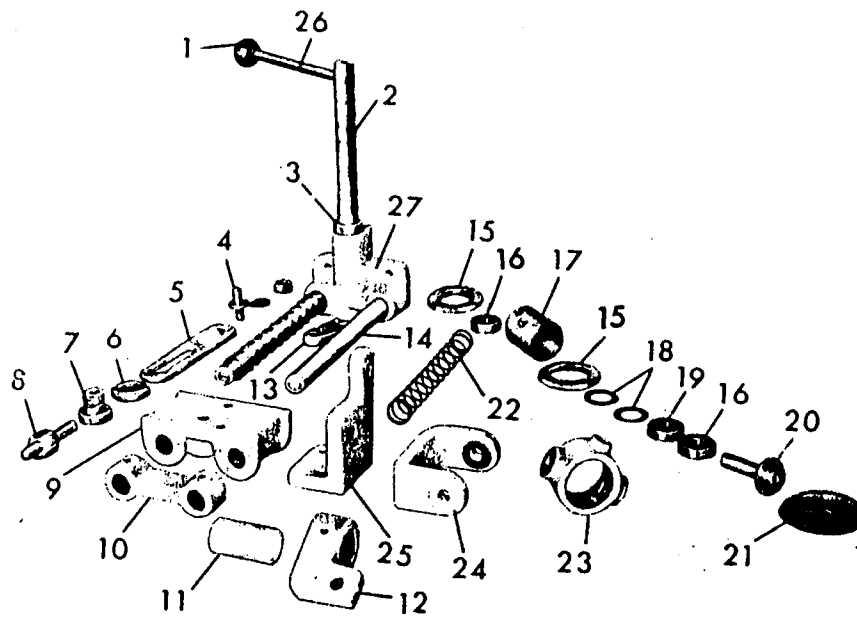


fig.4

N. Rif.	N. DISEGNO	Quant.
<b>fig. 4</b>		
1	bach: Ø 30	1
2	6404	1
3	6403	1
4	6406	1
5	6407	1
6	6410	1
7	6409	1
8	6408	1
9	6413	1
10	6414	1
11	6419	1
12	6418	1
13	6405	1
14	6411	2
15	6423	2
16	6201/2	2
17	6422	1
18	6002	2
19	7201	1
20	6420	1
21	6421	1
22	6412	2
23	6417	1
24	6416	1
25	6415	1
26	6401	1
27	6402	1

*Rumoldi*

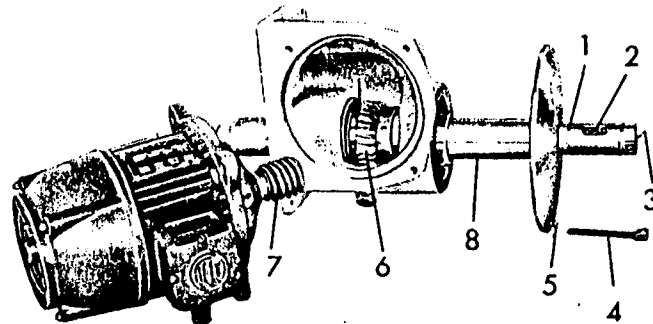


fig. 1

N. Rif.	N. DISEGNO	Quant.
<b>fig. 1</b>		
1	6213	1
2	6230	1
3	6224	1
4	6214	3
5	--	3
6	6209	1
7	6212	1
8	6206	1

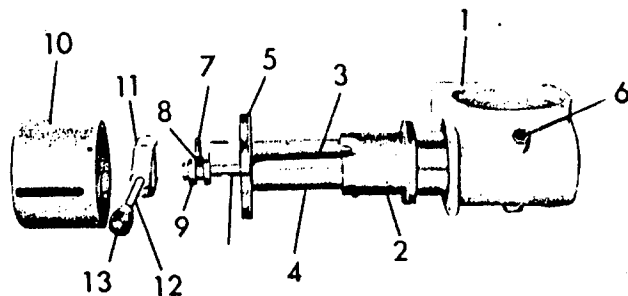


fig. 2

<b>fig. 2</b>		
1	6201	1
2	6202	1
3	6221	1
4	6207	1
5	6203	1
6	6226	2
7	6219	2
8	6215	2
9	6211	2
10	6225	1
11	6204	1
12	6218	1
13	--	1

*Rumoldi*