

194-G1 per teste 261-16-2MD-04
for heads 263-16-2MD-01
pour têtes 263-16-2MD-10
263-16-3MD-04
263-34-2DR-20
263-34-2DR-22
263-34-2DR-27
263-34-2WR-20
263-34-2WR-22

194-GA per teste 261-16-2MD-04
for heads 263-16-2MD-01
pour têtes 263-16-2MD-10
263-16-3MD-04
263-34-2DR-20
263-34-2DR-22
263-34-2DR-27

194-GB per teste 263-34-2DR-20
for heads 263-34-2WR-20
pour têtes

194-G1

194-GA

194-GB

SOLO I PEZZI DI RICAMBIO ORIGINALI RIMOLDI MARCATI **Rim**[®]
GARANTISCONO EFFETTIVA INTERCAMBIABILITA', FUNZIONALITA', DURATA

ONLY GENUINE RIMOLDI SPARE PARTS TRADEMARKED **Rim**[®]
GUARANTEE EFFECTIVE INTERCHANGEABILITY, EXCELLENT QUALITY, LONG LIFE

SEULEMENT LES PIECES DETACHEES D'ORIGINE RIMOLDI MARQUEES **Rim**[®]
GARANTISSENT UNE INTERCHANGEABILITE, UN FONCTIONNEMENT ET UNE DUREE EFFECTIFS

Il presente Catalogo Pezzi di Ricambio è costituito dai particolari componenti l'apparecchiatura e dalle varianti relative alla testa sulla quale la stessa è applicata.

Nella consultazione del Catalogo tenere presente che:

1. Tutti i particolari non fornibili sciolti non vengono richiamati singolarmente, ma soltanto illustrati nel gruppo di appartenenza.
2. I riferimenti delle figure dei particolari che compongono il gruppo sono di norma raggruppati in una parentesi. In alcuni casi però, dove non è possibile il raggruppamento, i numeri che nelle tavole illustrative richiamano i singoli pezzi sono affiancati dallo stesso segno particolare, con cui è indicato l'intero gruppo.
3. I particolari definiti come "PEZZI ANNULLATI" si intendono quelli non montati sulla testa, o sostituiti dai particolari specifici componenti l'apparecchiatura stessa.
Nel caso di un gruppo annullato, viene indicato soltanto il simbolo del gruppo, ma devono intendersi annullati anche tutti i particolari componenti il gruppo stesso.
4. Nelle tavole dove i particolari raffigurati non sono richiamati, si intendono appartenenti alla testa e pertanto vanno ricercati sul Catalogo della testa interessata.
I particolari raffigurati e richiamati (es.: organi di cucitura), annullano e sostituiscono i corrispondenti citati sul Catalogo della testa.

A V V E R T E N Z A

Nella richiesta di parti di ricambio, citare sempre il simbolo del particolare e la denominazione ufficiale usata nel catalogo.

This parts catalogue includes the parts making up the device and variants relative to the machine on which it is fitted.

When you consult the catalogue will you please note that:

1. all parts which cannot be supplied by themselves are not indicated alone, but shown together with the group to which they belong;
2. the references of the pictures of the parts making up the group are usually put in brackets.
In some cases, however, when their grouping is not possible, the numbers of the various parts in the tables are marked with the same particular sign with which the whole group is indicated.
3. The parts described as "CANCELLED PARTS" are those not fitted on the machine, or replaced by specific components of the device itself.
When an assembly has been annulled only the assembly symbol is specified, but all the parts forming the assembly must also be considered annulled.
4. In the tables where parts illustrated are not listed, said parts belong to the machine and therefore must be sought in the parts catalogue for the machine in question. The parts illustrated and listed (e.g. sewing parts) cancel and replace the corresponding parts in the machine catalogue.

ATTENTION

When ordering spare parts always state the serial number of the machine, the symbol of the part in question and the description given in the catalogue.

Ce catalogue de pièces détachées concerne les pièces composant le dispositif ainsi que les variantes relatives à la tête sur laquelle le dispositif est appliqué.

Lorsque l'on consulte le catalogue, se souvenir que:

1. Toutes les pièces qui ne sont pas fournies séparément mais qui font partie d'un groupe, ne sont pas indiquées séparément.
2. Les symboles des pièces qui forment un groupe sont regroupés entre parenthèses. Cependant, lorsque ceci n'a pas été possible, les symboles, qui dans les tables d'illustration correspondent aux pièces, sont suivis du même signe particulier qui indique le groupe tout entier.
3. Les pièces indiquées comme "PIECES ANNULEES" sont celles non montées sur la tête ou remplacées par des pièces spécifiques composant le dispositif.
Dans le cas de l'annulation d'un groupe, nous indiquons seulement le symbole du groupe, mais toutes les pièces qui forment ce groupe sont annulées.
4. Dans les tableaux où les pièces illustrées ne sont pas citées, il s'agit de pièces appartenant à la tête; pour ces pièces, il faut consulter le catalogue de la tête en question.
Les pièces illustrées et citées (par exemple: organes de couture) annulent et remplacent les pièces correspondantes citées sur le catalogue de la tête.

ATTENTION

Dans la commande de pièces détachées, indiquer toujours le numéro de la machine, le symbole de la pièce et la dénomination officielle mentionnée sur le catalogue.

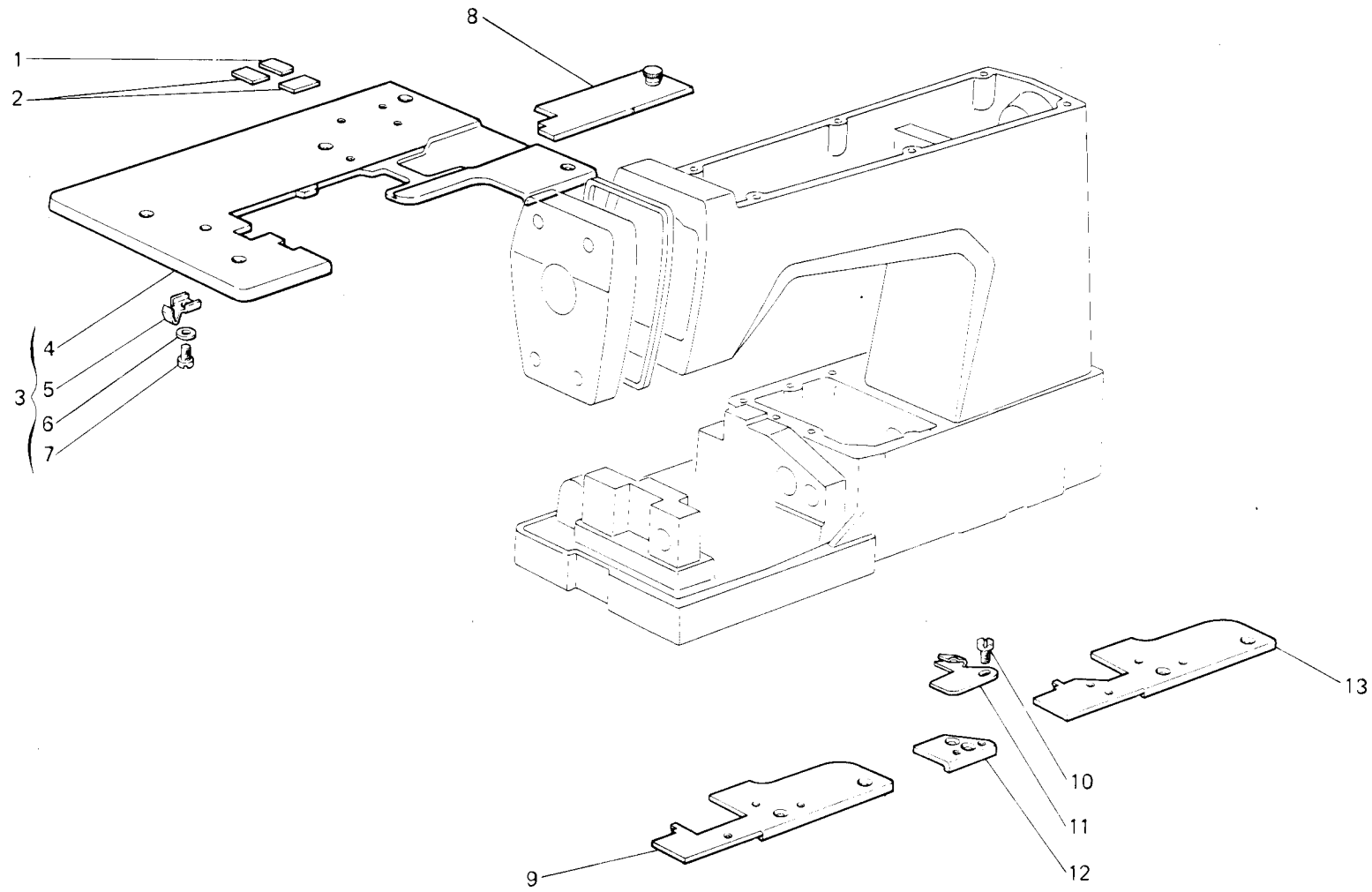


Fig. N. Abb. N.	Part. N. Bestell N. Piece N. Pieza N.	Qt. Anzahl	DESCRIZIONE	DESCRIPTION	DESCRIPTION	BENENNUNG	DESCRIPCION
1	929940-0-00	1	catarifrangente	reflector	catadioptré		
2	929834-0-00	2	catarifrangente	reflector	catadioptré		
3		1	piano di lavoro completo	working plate assembly	plan de travail complet		
4		1	piano di lavoro	working plate	plan de travail		
5	309351-0-00	1	molla	spring	ressort		
6	704306-2-00	1	rondella	washer	rondelle		
7	720411-2-00	1	vite	screw	vis		
8		1	coperchio scorrevole	sliding cover	couvercle coulissant		
			SOLO A RICHIESTA	ONLY ON REQUEST	SEULEMENT SUR DEMANDE		
				263-34-2DR-20 / 263-34-2WR-20			
9	929827-0-00	1	piastra piano di lavoro	plate	plaque		
			SOLO PER TESTE	ONLY FOR HEADS	SEULEMENT POUR TETES		
				261-16-2MD-04 / 263-16-2MD-01 / 263-16-2MD-10 / 263-16-3MD-04			
3	929761-4-00	1	piano di lavoro completo	working plate assembly	plan de travail complet		
4	929755-2-00	1	piano di lavoro	working plate	plan de travail		
8	929768-2-00	1	coperchio scorrevole	sliding cover	couvercle coulissant		
10	741658-2-00	1	vite	screw	vis		
11	929947-2-00	1	guida con vite	guide with screw	guide avec vis		
12	929825-0-00	1	piastra piano di lavoro	plate	plaque		
			SOLO PER TESTE	ONLY FOR HEADS	SEULEMENT POUR TETES		
				263-34-2DR-20 / 263-34-2WR-20 / 263-34-2DR-22 / 263-34-2WR-22 / 263-34-2DR-27			
3	929762-4-00	1	piano di lavoro completo	working plate assembly	plan de travail complet		
4	929756-2-00	1	piano di lavoro	working plate	plan de travail		
8	929769-2-00	1	coperchio scorrevole	sliding cover	couvercle coulissant		
13	929826-0-00	1	piastra piano di lavoro	plate	plaque		

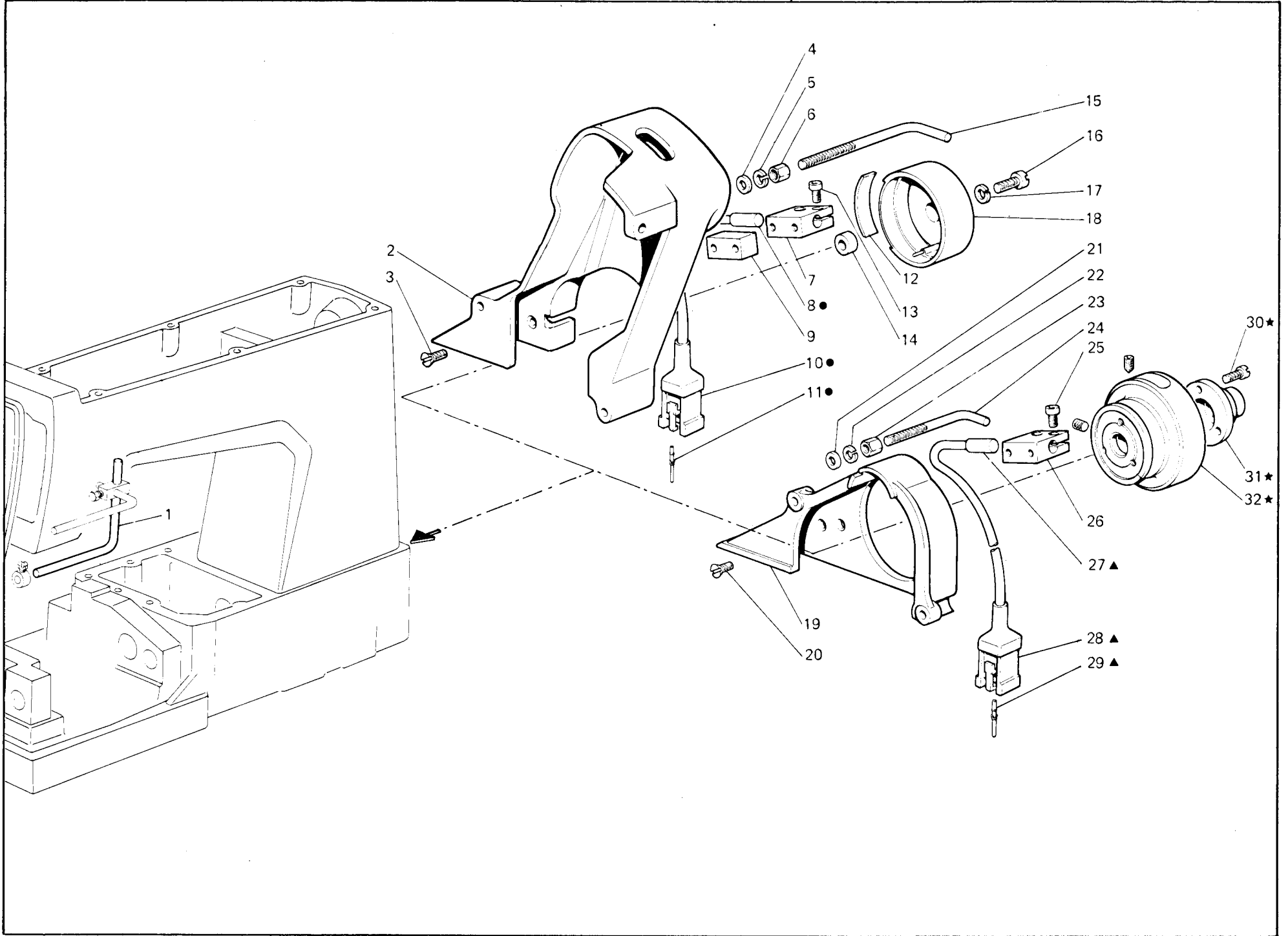


Fig. N. Abb. N.	Part. N. Bestell N. Piece N. Pieza N.	Qt. Anzahl	DESCRIZIONE	DESCRIPTION	DESCRIPTION	BENENNUNG	DESCRIPCION
			SOLO PER TESTE 263-34-2DR-20 / 263-34-2DR-22 / 263-34-2DR-27	ONLY FOR HEADS	SEULEMENT POUR TETES		
●	927477-4-00	1	interruttore completo	switch assembly	interrupteur complet		
1	929303-0-00	1	asta	rod	tige		
2	929837-0-00	1	carter	cover	carter		
3	725630-2-00	2	vite	screw	vis		
4	704220-2-00	1	rondella	washer	rondelle		
5	703007-0-00	1	rondella elastica	spring washer	rondelle élastique		
6	733507-0-00	1	dado	nut	écrou		
7	928094-0-00	1	blocchetto	block	bloc		
8	928154-0-00	1	interruttore	switch	interrupteur		
9	929855-0-00	1	distanziale	spacer	entretoise		
10	902663-0-00	1	connettore	connection	connecteur		
11	902668-0-00	3	contatto	contact	contact		
12	929839-0-00	1	inserto	insert	insertion		
13	722072-0-00	2	vite	screw	vis		
14	206893-0-00	1	distanziale	spacer	entretoise		
15	944950-0-00	1	perno posizionario	pin	pivot		
16	741153-0-00	1	vite	screw	vis		
17	703008-0-00	1	rondella elastica	spring washer	rondelle élastique		
18	929838-2-00	1	volantino	handwheel	volant		
			SOLO PER TESTE 261-16-2MD-04 / 263-16-2MD-01 / 263-16-2MD-10 / 263-34-2WR-20 / 263-34-2WR-22 / 263-16-3MD-04	ONLY FOR HEADS	SEULEMENT POUR TETES		
★	929949-4-00	1	volantino completo	handwheel assembly	volant complet		
▲	927477-4-00	1	interruttore completo	switch assembly	interrupteur complet		
19	929781-0-00	1	carter	cover	carter		
20	744922-2-00	2	vite	screw	vis		
21	704409-2-00	1	rondella	washer	rondelle		
22	703007-0-00	1	rondella elastica	spring washer	rondelle élastique		
23	733507-2-00	1	dado	nut	écrou		
24	944795-0-00	1	perno posizionario	pin	pivot		
25	722072-0-00	2	vite	screw	vis		
26	928094-0-00	1	blocchetto	block	bloc		
27	928154-0-00	1	interruttore	switch	interrupteur		
28	902663-0-00	1	connettore	connection	connecteur		
29	902668-0-00	3	contatto	contact	contact		
30	741974-2-00	3	vite	screw	vis		
31	302247-0-10	1	flangia	flange	fiasque		
32	929948-2-00	1	volantino	handwheel	volant		

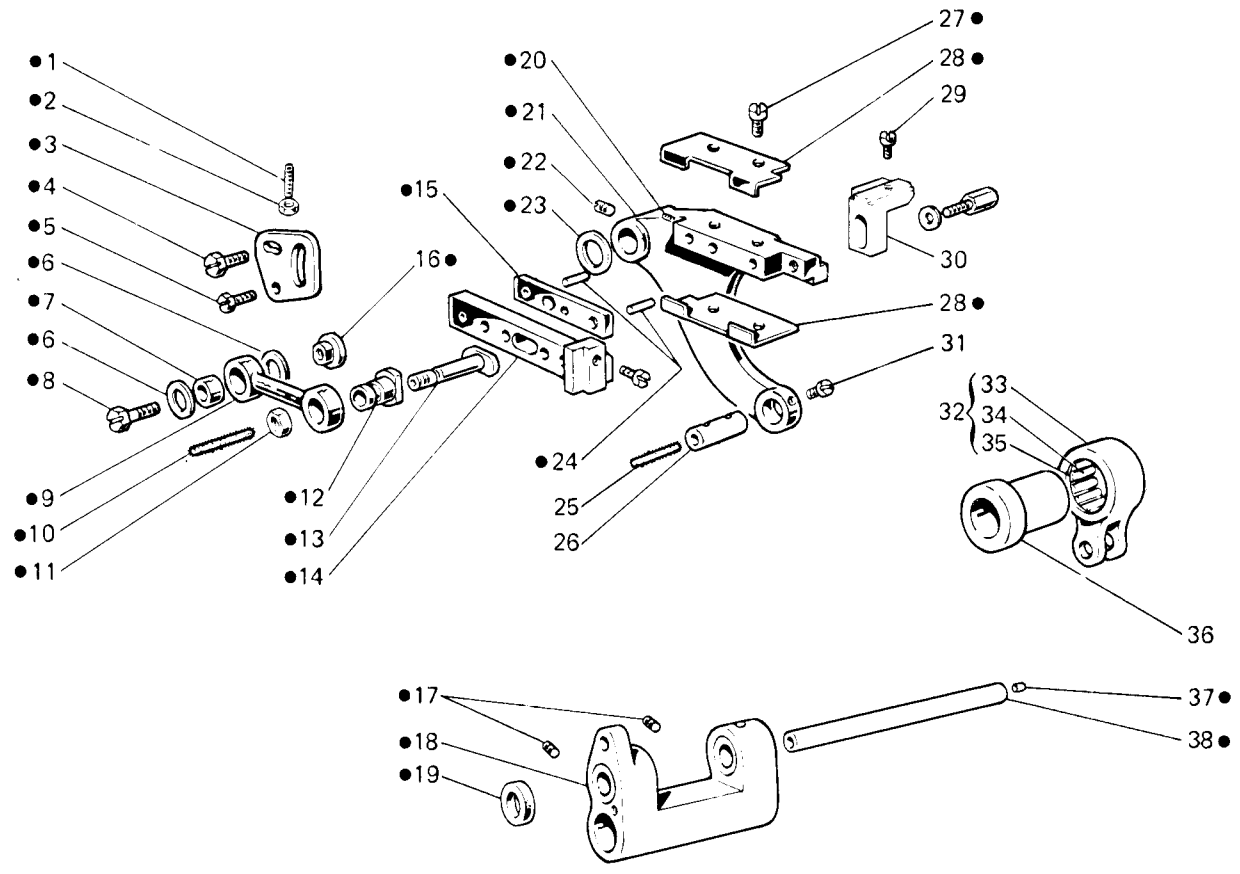


Fig. N. Abb. N.	Part. N. Bestell N. Piece N. Pieza N.	Qt. Anzahl	DESCRIZIONE	DESCRIPTION	DESCRIPTION	BENENNUNG	DESCRIPCION
—	929844-5-00	1	gruppo differenziale (escl.fig.29-30)	differential assembly (excl.figs 29-30)	differentiel complet (exclu figs 29-30)		
●	929751-4-00	1	differenziale completo	differential assembly	differentiel complet		
1	730061-2-00	1	vite	screw	vis		
2	746002-2-00	1	dado	nut	écrou		
3	308194-0-01	1	settore	sector	secteur		
4	740257-2-00	1	vite	screw	vis		
5	740243-2-00	1	vite	screw	vis		
6	704805-0-00	2	rondella	washer	rondelle		
7	300228-0-10	1	bussola	bush	bague		
8	740475-2-00	1	vite	screw	vis		
9	308275-2-00	1	bielletta	con-rod	bielle		
10	778414-0-00	2	stoppino	wick	mèche		
11	746404-2-00	1	dado	nut	écrou		
12	308196-0-10	1	bussola	bush	bague		
13	308276-0-20	1	perno	pin	pivot		
14	300231-0-30	1	slitta	slide	glissière		
15	300361-0-20	1	piastrina	plate	plaque		
16	300362-0-11	1	cursore	slider	curseur		
17	729013-2-00	2	vite	screw	vis		
18	308191-4-01	1	supporto completo	support assembly	support complet		
19	308190-0-00	2	anello di tenuta	retainer ring	bague d'étanchéité		
20	202473-0-11	1	vite	screw	vis		
21	929750-2-00	1	braccio	arm	bras		
22	745815-2-00	1	vite	screw	vis		
23	309560-0-00	2	rondella	washer	rondelle		
24	706434-0-00	2	spina	pin	goupille		
25	778238-0-00	1	stoppino	wick	mèche		
26	300209-0-10	1	perno	pin	pivot		
27	741928-0-00	4	vite	screw	vis		
28	300371-0-11	2	squadretta	bracket	équerre		
29	741538-2-00	1	vite	screw	vis		
30	929779-0-00	1	squadretta porta griffa	bracket	équerre		
31	742811-0-00	1	vite	screw	vis		
32	301459-4-10	1	giunto completo	joint assembly	joint complet		
33	301458-0-10	1	giunto	joint	joint		
34	301379-0-10	1	gabbia a rullini	needles cage	cage a aiguilles		
35	201143-0-10	2	anello di tenuta	circlip	circlip		
36	308030-2-00	1	eccentrico	eccentric	excentrique		
37	302333-0-10	2	tappo	plug	bouchon		
38	311343-2-00	1	perno	pin	pivot		

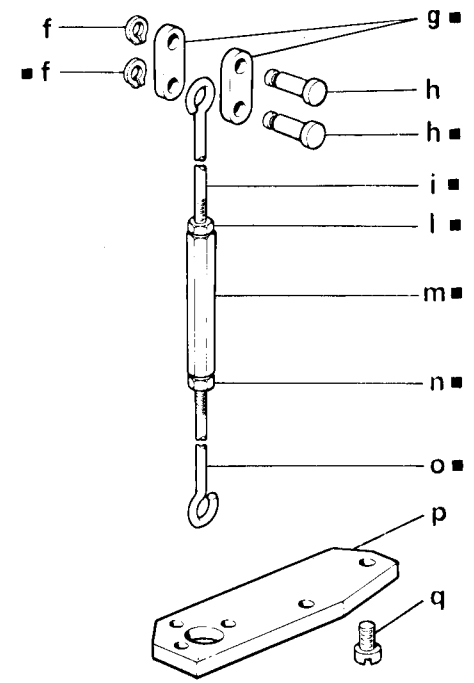
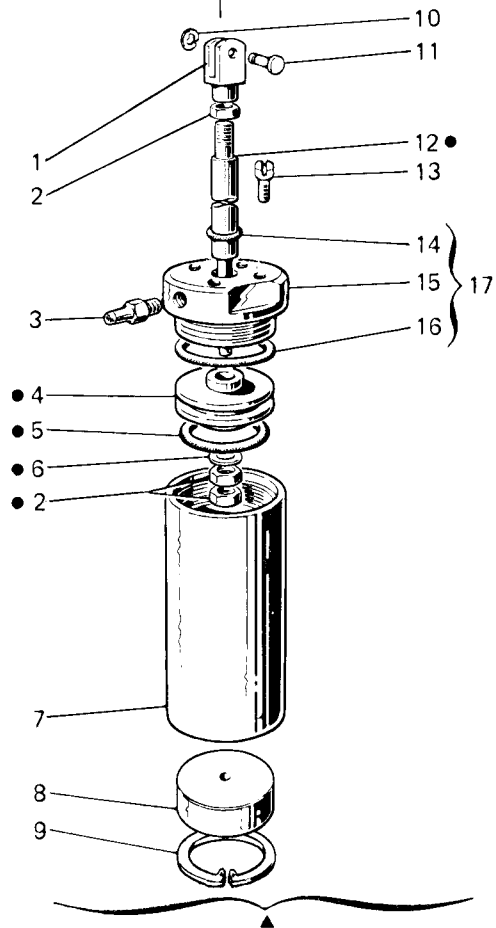
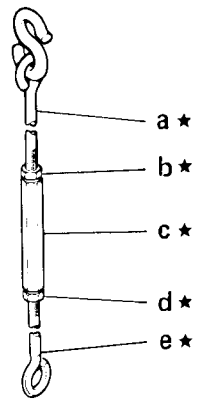


Fig. N. Abb. N.	Part. N. Bestell N. Piece N. Pieza N.	Qt. Anzahl	DESCRIZIONE	DESCRIPTION	DESCRIPTION	BENENNUNG	DESCRIPCION
			SOLO PER APPARECCHIATURA 194 GA	ONLY FOR ATTACHMENT 194 GA	SEULEMENT POUR DISPOSITIF 194 GA		
▲	924408-4-00	1	cilindro completo (escl. figg. 10-11-13)	cylinder assembly (excl. figs 10-11-13)	cyindre complet (exclu figs 10-11-13)		
●	924805-4-10	1	pistone completo	piston assembly	piston complet		
1	990310-0-10	1	forcella	fork	fourche		
2	746402-2-00	3	dado	nut	écrou		
3	924797-0-10	1	attacco	union pipe	raccord		
4	924804-0-10	1	pistone	piston	piston		
5	701037-0-00	1	anello di tenuta	retainer ring	bague d'étanchéité		
6	704218-2-00	1	rondella	washer	rondelle		
7	924802-0-10	1	cilindro	cylinder	cyindre		
8	924407-0-01	1	tappo inferiore	lower plug	bouchon inférieur		
9	700130-0-00	1	anello di fermo	circlip	circlip		
10	700205-0-00	1	anello di tenuta	retainer ring	bague d'étanchéité		
11	990311-0-10	1	perno	pin	pivot		
12	924808-0-10	1	albero	shaft	arbre		
13	721474-2-00	3	vite	screw	vis		
14	701007-0-00	1	anello di tenuta	retainer ring	bague d'étanchéité		
15	924806-0-10	1	tappo superiore	upper plug	bouchon supérieur		
16	701132-0-00	1	anello di tenuta	retaine ring	bague d'étanchéité		
17	924807-4-10	1	tappo completo	plug assembly	bouchon complet		
			SOLO PER BANCALE REGOLABILE	ONLY FOR ADJUSTABLE STAND	SEULEMENT POUR BATI REGLABLE		
★	910215-4-10	1	tirante completo	tie-rod assembly	tirant complet		
a	910217-2-00	1	tirante superiore	upper tie-rod	tirant supérieur		
b	733505-2-00	1	dado	nut	écrou		
c	910190-0-10	1	bussola	bush	bague		
d	746601-2-00	1	dado	nut	écrou		
e	910216-0-10	1	tirante inferiore	lower tie-rod	tirant inférieur		
			SOLO PER BANCALE A COLONNA	ONLY FOR COLUMN STAND	SEULEMENT POUR BATI COLONNE		
■	910214-4-11	1	tirante completo	tie-rod assembly	tirant complet		
f	700205-0-00	2	anello di fermo	circlip	circlip		
g	990765-0-00	2	piastrina	sheet	plaque		
h	203211-0-10	2	perno	pin	pivot		
i	910187-0-11	1	tirante superiore	upper tie-rod	tirant supérieur		
l	733505-2-00	1	dado	nut	écrou		
m	910190-0-10	1	bussola	bush	bague		
n	746601-2-00	1	dado	nut	écrou		
o	910213-0-10	1	tirante inferiore	lower tie-rod	tirant inférieur		
p	990440-0-10	1	piastrina	sheet	plaque		
q	721484-2-00	2	vite	screw	vis		

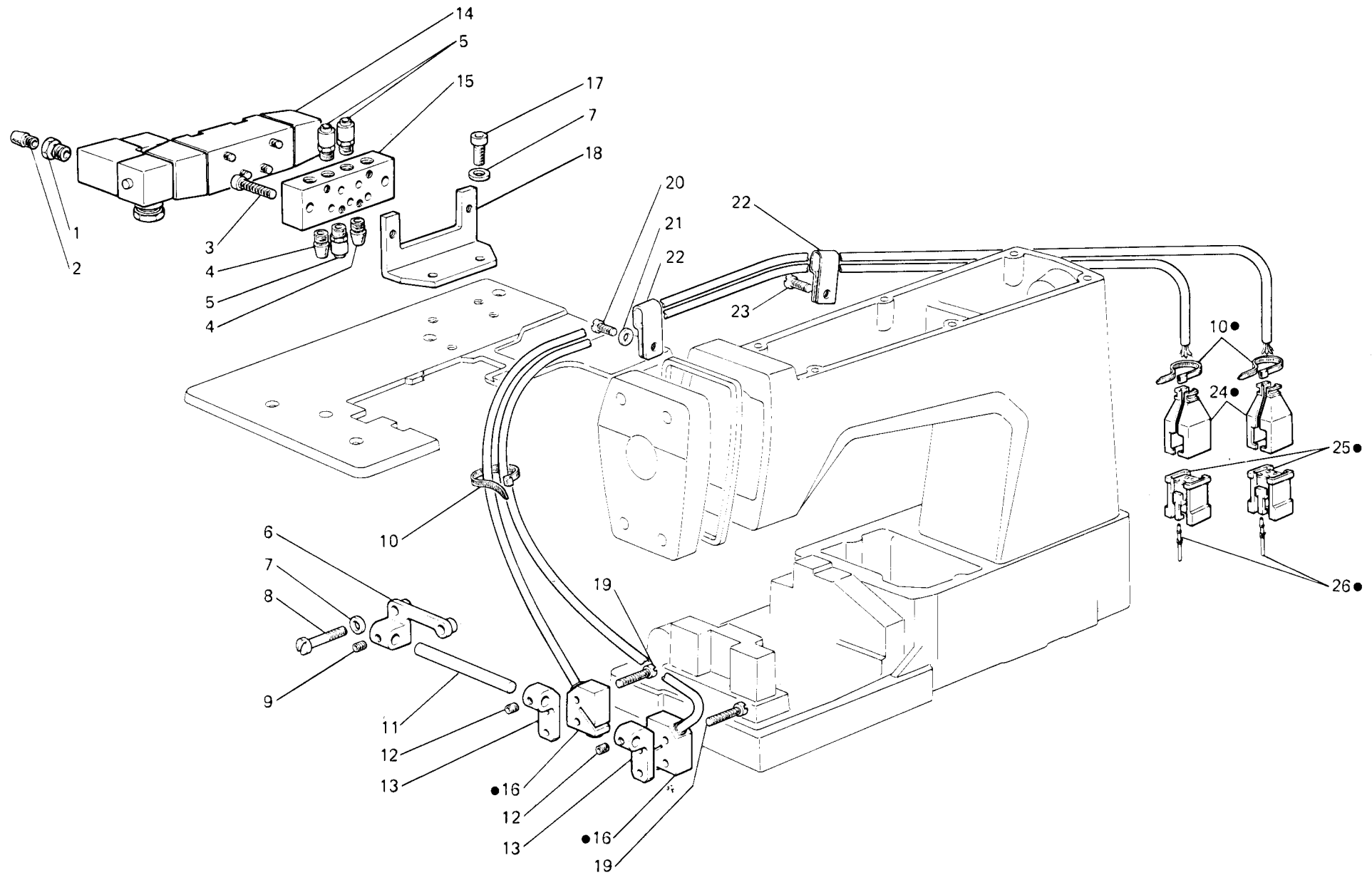


Fig. N. Abb. N.	Part. N. Bestell N. Piece N. Pieza N.	Qt. Anzahl	DESCRIZIONE	DESCRIPTION	DESCRIPTION	BENENNUNG	DESCRIPCION
●	927478-4-00	2	fototransistor completo	photo transistor assembly	phototransistor complet		
1	943202-0-00	1	riduzione	reduction	reduction		
2	924851-0-10	1	filtro	filter	filtre		
3	722452-2-00	2	vite	screw	vis		
4	922754-0-00	2	filtro	filter	filtre		
5	941506-4-00	3	raccordo	union pipe	raccord		
6	929811-0-00	1	supporto	support	support		
7	704226-2-00	4	rondella	washer	rondelle		
8	930282-0-10	2	vite	screw	vis		
9	730022-2-00	1	vite	screw	vis		
10	920258-0-10	5	cinturino	strap	bride		
11	929813-0-00	1	perno	pin	pivot		
12	745812-2-00	2	vite	screw	vis		
13	929812-0-00	2	supporto	support	support		
14	940469-4-01	1	elettrodistributore	electric distributor	distributeur électrique		
15	929840-0-00	1	base	base	base		
16	944244-0-00	2	fototransistor	photo transistor	phototransistor		
17	722433-2-00	2	vite	screw	vis		
18	929818-0-00	1	supporto	support	support		
19	724082-2-00	4	vite	screw	vis		
20	721454-2-00	1	vite	screw	vis		
21	704306-2-00	1	rondella	washer	rondelle		
22	923302-0-10	2	gaffetta	clip	agrafe		
23	721863-2-00	1	vite	screw	vis		
24	902659-0-00	2	serracavo	cable holder	serre-câble		
25	902664-0-00	2	connettore	connection	connecteur		
26	902668-0-00	10	contatto	contact	contact		

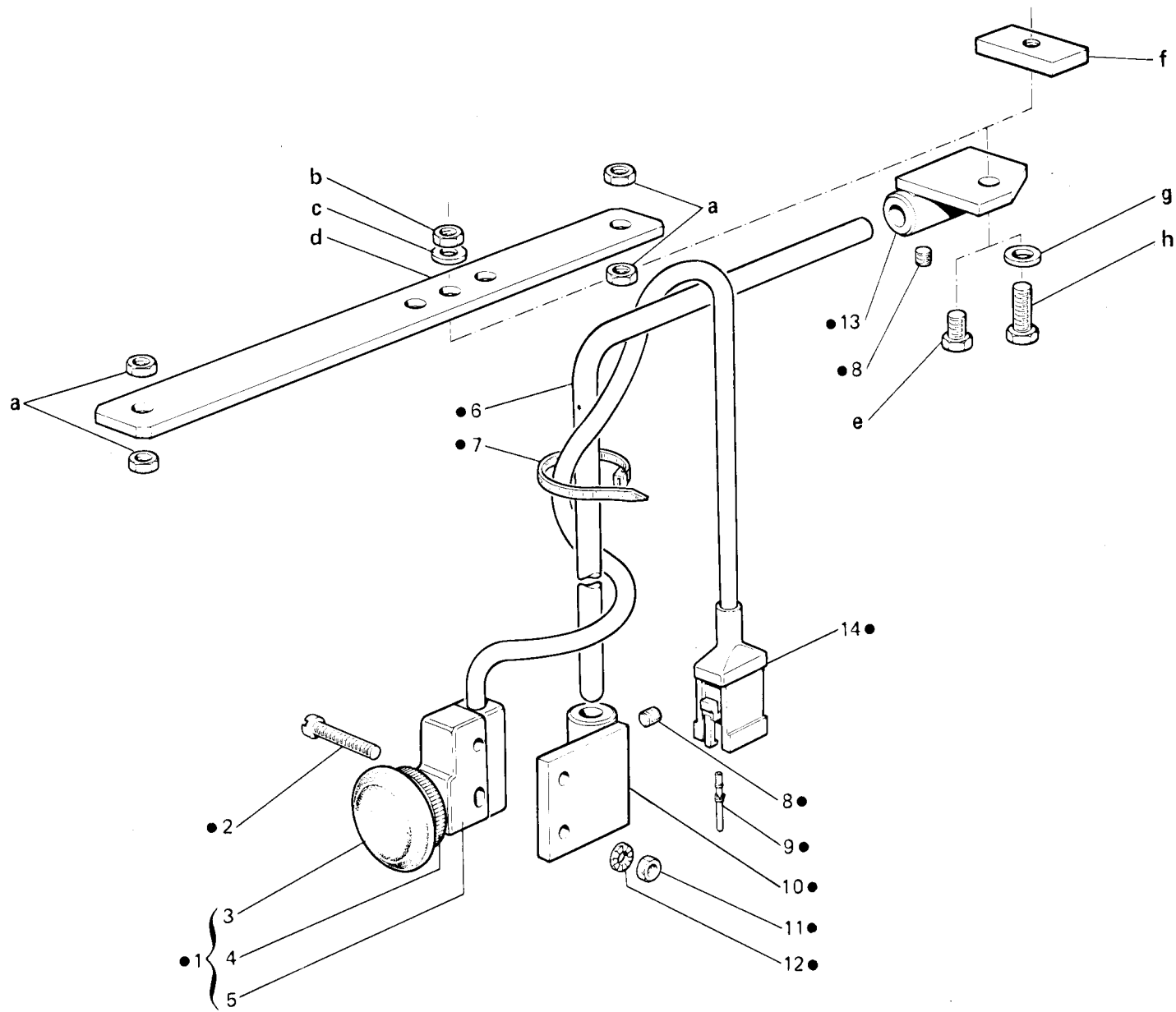


Fig. N. Abb. N.	Part. N. Bestell N. Piece N. Pieza N.	Qt. Anzahl	DESCRIZIONE	DESCRIPTION	DESCRIPTION	BENENNUNG	DESCRIPCION
			SOLO PER 194 GA	ONLY FOR 194 GA	SEULEMENT POUR 194 GA		
●	929430-4-00	1	gruppo pulsante	push-button assembly	poussoir complet		
1	920472-4-00	1	pulsante completo	push-butt assembly	poussoir complet		
2	722143-0-00	2	vite	screw	vis		
3	920492-0-00	1	membrana	membrane	membrane		
4	920473-0-00	1	ghiera	ring-nut	collier		
5	920474-0-00	1	microinterruttore	microswitch	micro-interrupteur		
6	920490-0-10	1	asta	rod	tige		
7	920258-0-10	1	cinturino	strap	bride		
8	729034-2-00	4	vite	screw	vis		
9	902668-0-00	3	contatto	contact	contact		
10	920488-2-10	1	supporto	support	support		
11	733505-0-00	2	dado	nut	écrou		
12	703305-0-00	2	rondella dentata	washer	rondelle		
13	920485-2-10	1	supporto	support	support		
14	902663-0-00	1	spina	pin	goupille		
			SOLO PER BANCALE A COLONNA	ONLY FOR COLUMN STAND	SEULEMENT POUR BATI COLONNE		
a	733008-2-00	4	dado	nut	écrou		
b	733813-0-00	1	dado	nut	écrou		
c	704536-0-00	1	rondella	washer	rondelle		
d	923326-0-10	1	traversa	tie	traverse		
e	720526-0-00	1	vite	screw	vis		
			SOLO PER BANCALE REGOLABILE	ONLY FOR ADJUSTABLE STAND	SEULEMENT POUR BATI REGLABLE		
f	920909-0-00	1	piastrina	sheet	plaquette		
g	704232-2-00	1	rondella	washer	rondelle		
h	720525-2-00	1	vite	screw	vis		

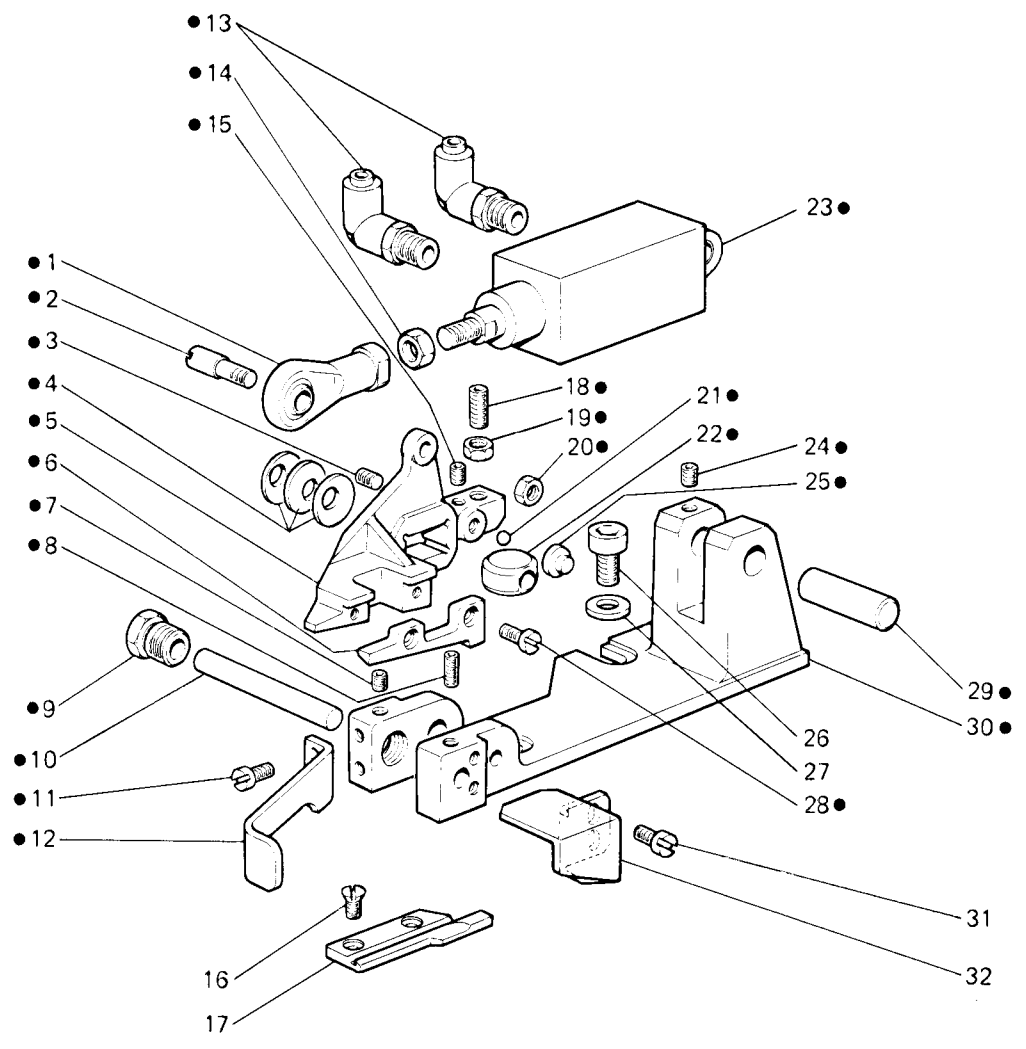


Fig. N. Abb. N.	Part. N. Bestell N. Piece N. Pieza N.	Qt. Anzahl	DESCRIZIONE	DESCRIPTION	DESCRIPTION	BENENNUNG	DESCRIPCION
●	929800-4-00	1	gruppo coltelli	knives assembly	groupe couteaux		
1	929832-0-00	1	terminale	terminal	extrémité		
2	929831-0-00	1	perno	pin	pivot		
3	729033-2-00	1	vite	screw	vis		
4	702432-0-00	3	rondella a tazza	cup washer	rondelle à tasse		
5	929805-0-00	1	leva	lever	levier		
6	929803-0-00	1	coltello superiore	upper knife	couteau supérieur		
7	745812-2-00	1	vite	screw	vis		
8	729032-2-00	1	vite	screw	vis		
9	929806-0-00	1	pomolo	knob	pommeau		
10	929808-0-00	1	perno	pin	pivot		
11	721424-2-00	2	vite	screw	vis		
12	929814-0-00	1	carterino	cover	carter		
13	941514-4-00	2	raccordo	union pipe	raccord		
14	733006-2-00	1	dado	nut	écrou		
15	745900-2-00	1	vite	screw	vis		
16	724422-5-00	2	vite	screw	vis		
17	929804-0-00	1	coltello inferiore	lower knife	couteau inférieur		
18	729894-2-00	1	vite	screw	vis		
19	733104-2-00	1	dado	nut	écrou		
20	733508-2-00	1	dado	nut	écrou		
21	707603-0-00	1	sfera	ball	sphère		
22	929809-0-00	1	blocchetto	block	bloc		
23	929833-0-00	1	cilindro	cylinder	cyindre		
24	729012-2-00	1	vite	screw	vis		
25	929810-0-00	1	pastiglia	plug	bouchon		
26	722433-2-00	2	vite	screw	vis		
27	704226-2-00	2	rondella	washer	rondelle		
28	741936-5-00	2	vite	screw	vis		
29	929807-0-00	1	perno	pin	pivot		
30	929802-0-00	1	supporto	support	support		
			ESCLUSO TESTA	EXCLUDED HEAD	EXCLU TETE		
				261-16-2MD-04			
31	741936-2-00	2	vite	screw	vis		
32	929830-0-00	1	carterino	cover	carter		

Fig. N. Abb. N.	Part. N. Bestell N. Pieze N. Pieza N.	Qt. Anzahl	DESCRIZIONE	DESCRIPTION	DESCRIPTION	BENENNUNG	DESCRIPCION
●	931050-4-00	1	gruppo moduli	module assembly	groupe module		
A	931000-4-01	1	modulo M 001.1 completo	M 001.1 module assembly	groupe modulo M 001.1		
B	931006-4-00	1	modulo M 003.0 completo	M 003.0 module assembly	groupe modulo M 003.0		
C	931005-4-01	1	modulo M 002.1 completo	M 002.1 module assembly	groupe modulo M 002.1		
1	929851-0-00	2	coperchio	cover	couvercle		
2	734001-2-00	8	dado	nut	écrou		
3	929857-0-00	4	tirante	tie-rod	tirant		
4	722413-2-00	2	vite	screw	vis		
5	929853-0-00	2	antivibrante	shock absorber	amortisseur		
6	788802-0-00	1	targhetta	plate	plaque		
			SOLO PER BANCALE A COLONNA	ONLY FOR COLUMN STAND	SEULEMENT POUR BATI COLONNE		
a	731086-0-00	8	vite	screw	vis		
b	704108-2-00	8	rondella	washer	rondelle		
c	929852-0-00	4	squadretta	bracket	équerre		
			SOLO PER BANCALE REGOLABILE	ONLY FOR ADJUSTABLE STAND	SEULEMENT POUR BATI REGLABLE		
d	733508-2-00	4	dado	nut	écrou		
e	704226-2-00	8	rondella	washer	rondelle		
f	720103-2-00	4	vite	screw	vis		
g	929866-0-00	1	piastra	plate	plaque		
h	929867-0-00	1	sostegno	support	support		
i	722433-2-00	4	vite	screw	vis		

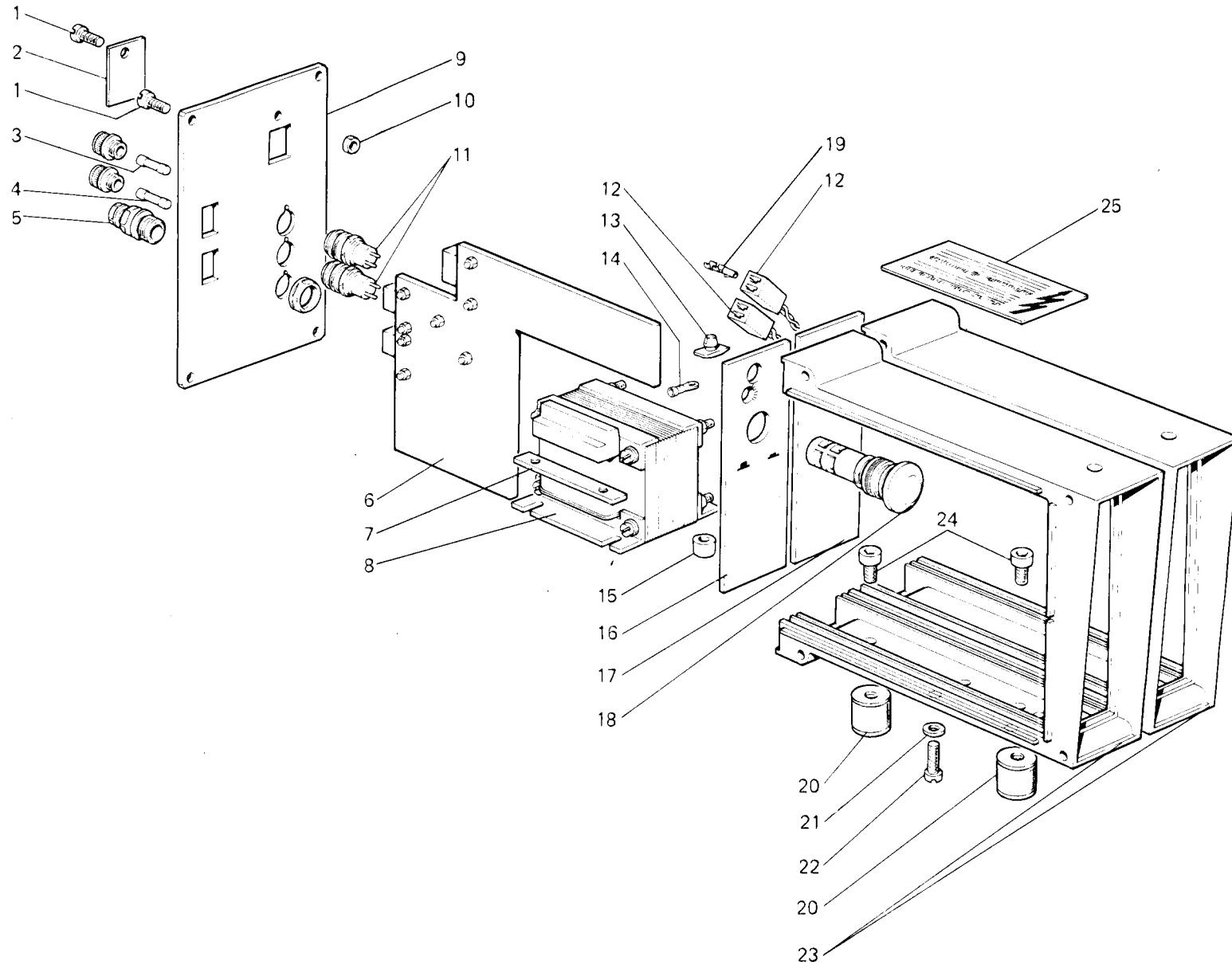


Fig. N. Abb. N.	Part. N. Bestell N. Pieça N. Pieza N.	Qt. Anzahl	DESCRIZIONE	DESCRIPTION	DESCRIPTION	BENENNUNG	DESCRIPCION
—	931000-4-01	1	modulo (M001.1)	module (M001.1)	module (M001.1)		
1	722073-2-00	5	vite	screw	vis		
2	926549-0-00	1	piastrina	sheet	plaquette		
3	921036-0-10	1	fusibile	fuse	fusible		
4	928169-0-00	1	fusibile	fuse	fusible		
5	928429-0-00	1	pressacavo	cable holder	presse-câble		
6	929930-4-01	1	pannello completo	panel assembly	panneau complet		
7	929854-0-00	2	piastrina	sheet	plaquette		
8	929923-0-00	1	trasformatore	transformer	transformateur		
9	929871-0-01	1	pannello posteriore	rear panel	panneau arrière		
10	733505-2-00	1	dado	nut	écrou		
11	920278-0-10	2	porta fusibile	fuse holder	porte-fusible		
12	929822-0-00	2	porta contatti	contact holder	porte-contacts		
13	929861-0-00	4	bottoni di fissaggio	button	bouton		
14	910440-0-00	7	capocorda	terminal	extrémité		
15	941247-0-00	2	distanziale	spacer	entretoise		
16	929864-0-00	1	pannello anteriore	front panel	panneau avant		
17	929870-0-00	1	pannello anteriore	front panel	panneau avant		
18	929878-0-00	1	interruttore	switch	interrupteur		
19	929823-0-00	4	contatto	contact	contact		
20	929853-0-00	2	ammortizzatore	shock absorber	amortisseur		
21	704106-2-00	4	rondella	washer	rondelle		
22	722103-2-00	4	vite	screw	vis		
23	929850-0-00	2	scatola	box	boîte		
24	722413-2-00	2	vite	screw	vis		
25	925122-0-00	1	targhetta	plate	plaque		

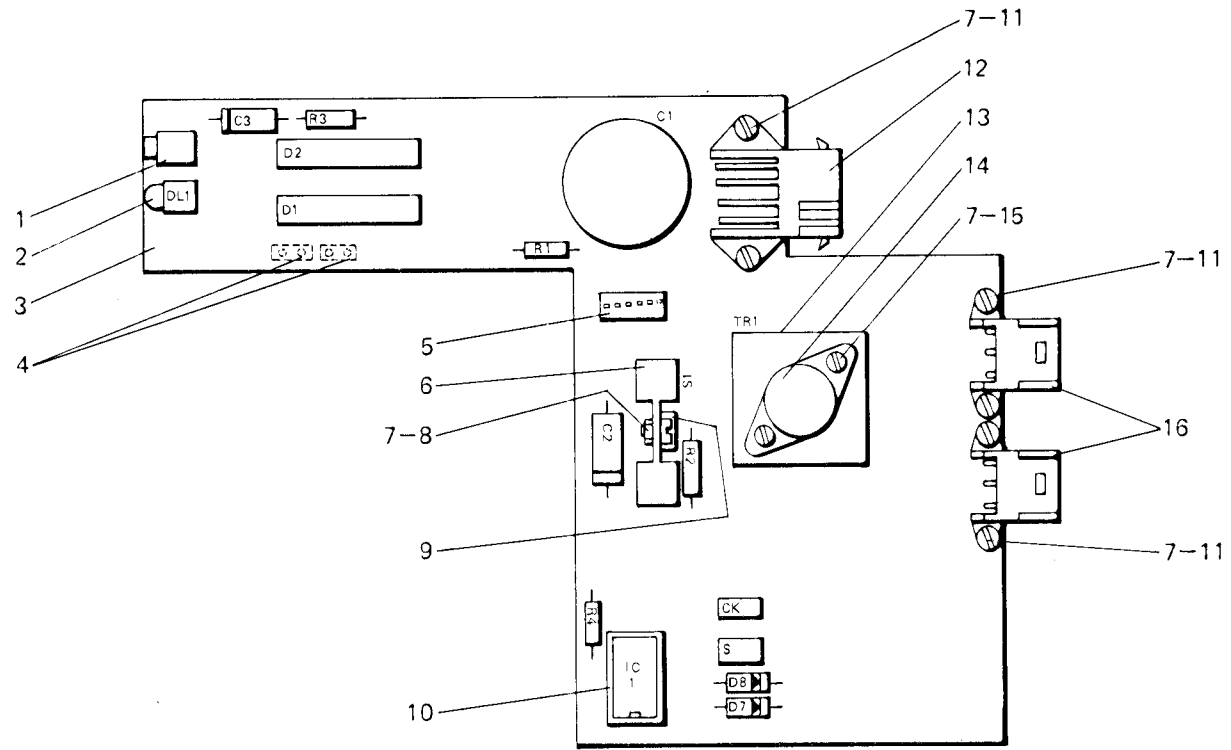


Fig. N. Abb. N.	Part. N. Bestell N. Piece N. Pieza N.	Qt. Anzahl	DESCRIZIONE	DESCRIPTION	DESCRIPTION	BENENNUNG	DESCRIPCION
—	929930-4-01	1	pannello (M001.1)	panel (M001.1)	panneau (M001.1)		
1	927475-0-00	1	pulsante	push-button	poussoir		
2	927222-0-00	1	diodo LED	diode	diode		
3	929874-0-01	1	pannello	panel	panneau		
4	929821-0-00	2	porta contatti	contact holder	porte-contacts		
5	929894-0-00	1	connettore	connection	connecteur		
6	927885-0-00	1	dissipatore	dissipator	dissipateur		
7	733503-2-00	9	dado	nut	écrou		
8	741634-2-00	1	vite	screw	vis		
9	927464-0-00	1	integrato	integrator	integrateur		
10	927228-0-00	1	zoccolo	block	socle		
11	741665-2-00	6	vite	screw	vis		
12	927387-0-00	1	connettore	connection	connecteur		
13	925634-0-00	1	dissipatore	dissipator	dissipateur		
14	944874-0-00	1	transistor	transistor	transistor		
15	722102-0-00	2	vite	screw	vis		
16	927385-0-00	2	connettore	connection	connecteur		
R1	927226-0-00	1	resistenza	resistor	résistance		
R2	902654-0-00	1	resistenza	resistor	résistance		
R3	927447-0-00	1	resistenza	resistor	résistance		
R4	925661-0-00	1	resistenza	resistor	résistance		
C1	940351-0-00	1	condensatore	condenser	condensateur		
C2	928162-0-00	1	condensatore	condenser	condensateur		
C3	925951-0-00	1	condensatore	condenser	condensateur		
D1-D2	941399-0-00	2	raddrizzatore	rectifier	redresseur		
D7-D8	923409-0-00	2	diodo	diode	diode		
DL1	927468-0-00	1	porta LED	LED holder	porte-LED		
S	926548-0-00	1	ponticello	connection	connexion		
IC1	929893-0-00	1	integrato	integrator	integrateur		
CK	926547-0-00	1	ponticello	connection	connexion		

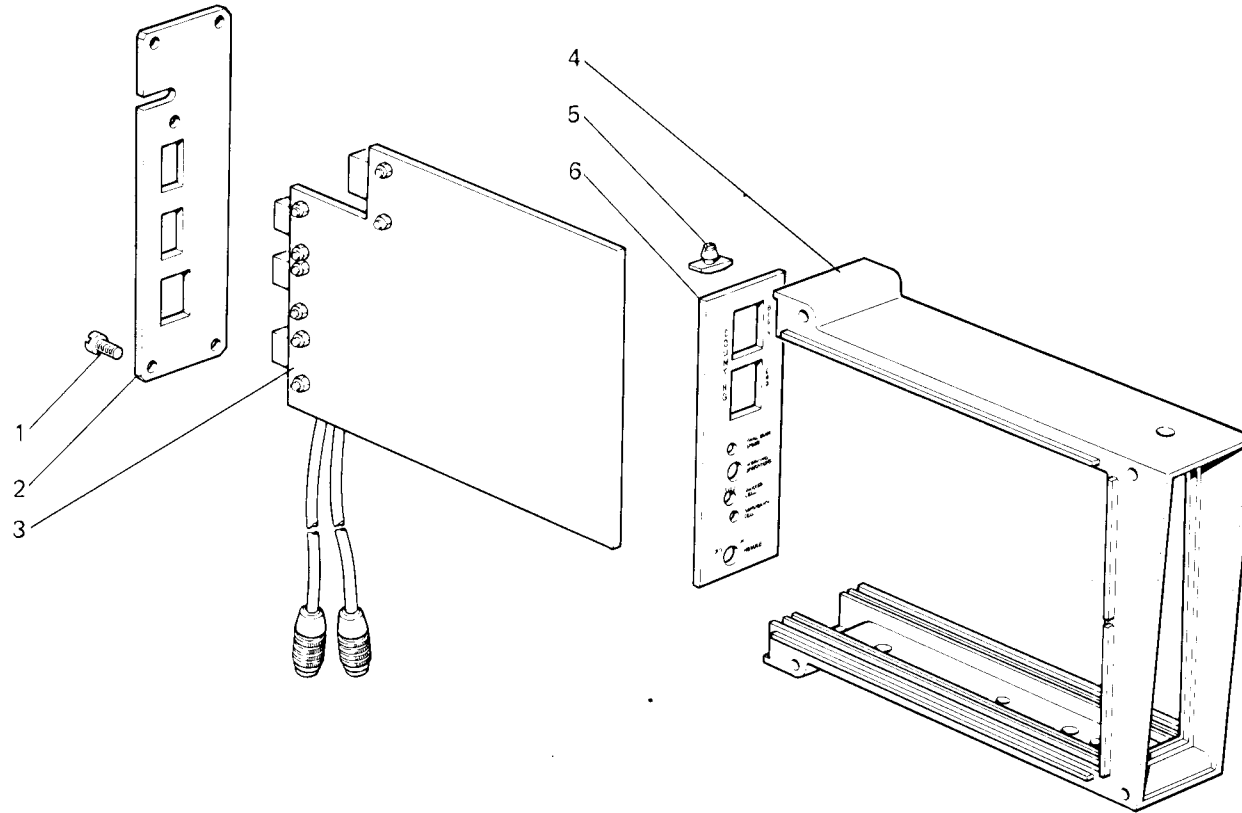


Fig. N. Abb. N.	Part. N. Bestell N. Pieze N. Pieza N.	Qt. Anzahl	DESCRIZIONE	DESCRIPTION	DESCRIPTION	BENENNUNG	DESCRIPCION
—	931006-4-00	1	modulo (M003.0)	module (M003.0)	module (M003.0)		
1	721454-2-00	4	vite	screw	vis		
2	929872-0-00	1	pannello posteriore	rear panel	panneau arriere		
3	929932-4-00	1	pannello completo	panel assembly	panneau complet		
4	929850-0-00	1	scatola	box	boite		
5	929861-0-00	2	bottone di fissaggio	button	bouton		
6	929865-0-00	1	pannello anteriore	front panel	panneau avant		

N. Fig. Abb. N.	Part. N. Bestell. N. Piece N. Pieza N.	Qt. Anzahl	DESCRIZIONE	DESCRIPTION	DESCRIPTION	N. Fig. Abb. N.	Part. N. Bestell. N. Piece N. Pieza N.	Qt. Anzahl	DESCRIZIONE	DESCRIPTION	DESCRIPTION
-	929932-4-00	1	pannello (M003.0)	panel (M003.0)	panneau (M003.0)	C2	928162-0-00	1	condensatore	condenser	condensateur
1	927387-0-00	1	connettore	connection	connecteur	C3	927380-0-00	1	condensatore	condenser	condensateur
2	741665-2-00	8	vite	screw	vis	C4	927381-0-00	1	condensatore	condenser	condensateur
3	733503-2-00	8	dado	nut	écrou	C5-C7-C9 C10-C13 C11-C14 C16-C17	927382-0-00	5	condensatore	condenser	condensateur
4	927228-0-00	11	zoccolo	block	socle		929879-0-00	4	condensatore	condenser	condensateur
5	928218-0-00	3	zoccolo	block	socle						
6	929924-4-00	2	commutatore	commutator	commutateur	IP	929925-0-00	1	interruttore	switch	interrupteur
7	927469-0-00	1	diodo LED	LED diode	diode LED	PT1	940429-0-00	1	potenziometro	potentiometer	potentiomètre
8	923558-0-00	3	zoccolo	block	socle	PT2	929927-0-00	1	potenziometro	potentiometer	potentiomètre
9	929876-0-00	1	pannello	panel	panneau	PT3-PT4	929880-0-00	2	potenziometro	potentiometer	potentiomètre
10	927470-0-00	1	zoccolo	block	socle	DZ1	927462-0-00	1	diodo	diode	diode
11	923694-0-00	1	spina	pin	goupille	DZ2	927463-0-00	1	diodo	diode	diode
12	925625-0-00	24	terminale	terminal	extrémité	D1-D4 D6-D13	923409-0-00	12	diodo	diode	diode
13	927385-0-00	2	connettore	connection	connecteur	D5	923706-0-00	1	diodo	diode	diode
14	927386-0-00	1	connettore	connection	connecteur	FT2	929886-0-00	1	opto-solatore	insulating	isolant
15	923692-0-00	1	spina	pin	goupille	RL1-RL2	928173-0-00	2	relè	relay	relais
16	902668-0-00	6	contatto	contact	contact	TR1-TR2 TR3	927231-0-00	3	transistor	transistor	transistor
17	902665-0-00	1	connettore	connection	connecteur	JA1-JA3	925631-0-00	2	integrato	integrator	integrateur
18	923708-0-00	3	presa	socket	prise	JA2	927471-0-00	1	integrato	integrator	integrateur
19	929935-0-00	3	anello marcaffili	ring	anneau	IC1-IC2	929893-0-00	2	integrato	integrator	integrateur
R1	925662-0-00	1	resistenza	resistor	résistance	IC3-IC4 IC9	929891-0-00	3	integrato	integrator	integrateur
R2-R8	927446-0-00	2	resistenza	resistor	résistance	IC5	929890-0-00	1	integrato	integrator	integrateur
R3	928167-0-00	1	resistenza	resistor	résistance	IC6-IC7 IC8	927230-0-00	3	integrato	integrator	integrateur
R4-R18						IC10	929892-0-00	1	integrato	integrator	integrateur
R20-R32	925661-0-00	12	resistenza	resistor	résistance	IC11-IC13	927229-0-00	2	integrato	integrator	integrateur
R34-R40						S	927474-0-00	1	interruttore	switch	interrupteur
R24-R29						I	927473-0-00	1	interruttore	switch	interrupteur
R5	943799-0-00	1	resistenza	resistor	résistance	DL1	927468-0-00	1	porta LED	LED holder	porte-LED
R6-R41	923623-0-00	2	resistenza	resistor	résistance						
R7	927442-0-00	1	resistenza	resistor	résistance						
R9-R23	927448-0-00	2	resistenza	resistor	résistance						
R10	927449-0-00	1	resistenza	resistor	résistance						
R11	927444-0-00	1	resistenza	resistor	résistance						
R12	925973-0-00	1	resistenza	resistor	résistance						
R13	927445-0-00	1	resistenza	resistor	résistance						
R14	927443-0-00	1	resistenza	resistor	résistance						
R15-R37	927447-0-00	3	resistenza	resistor	résistance						
R39											
R16	927226-0-00	1	resistenza	resistor	résistance						
R17	929926-0-00	1	resistenza	resistor	résistance						
R19-R21	925663-0-00	3	resistenza	resistor	résistance						
R30											
R22-R36	925659-0-00	3	resistenza	resistor	résistance						
R38											
R31-R33	925971-0-00	3	resistenza	resistor	résistance						
R35											
C1-C6 C15	927383-0-00	3	condensatore	condenser	condensateur						

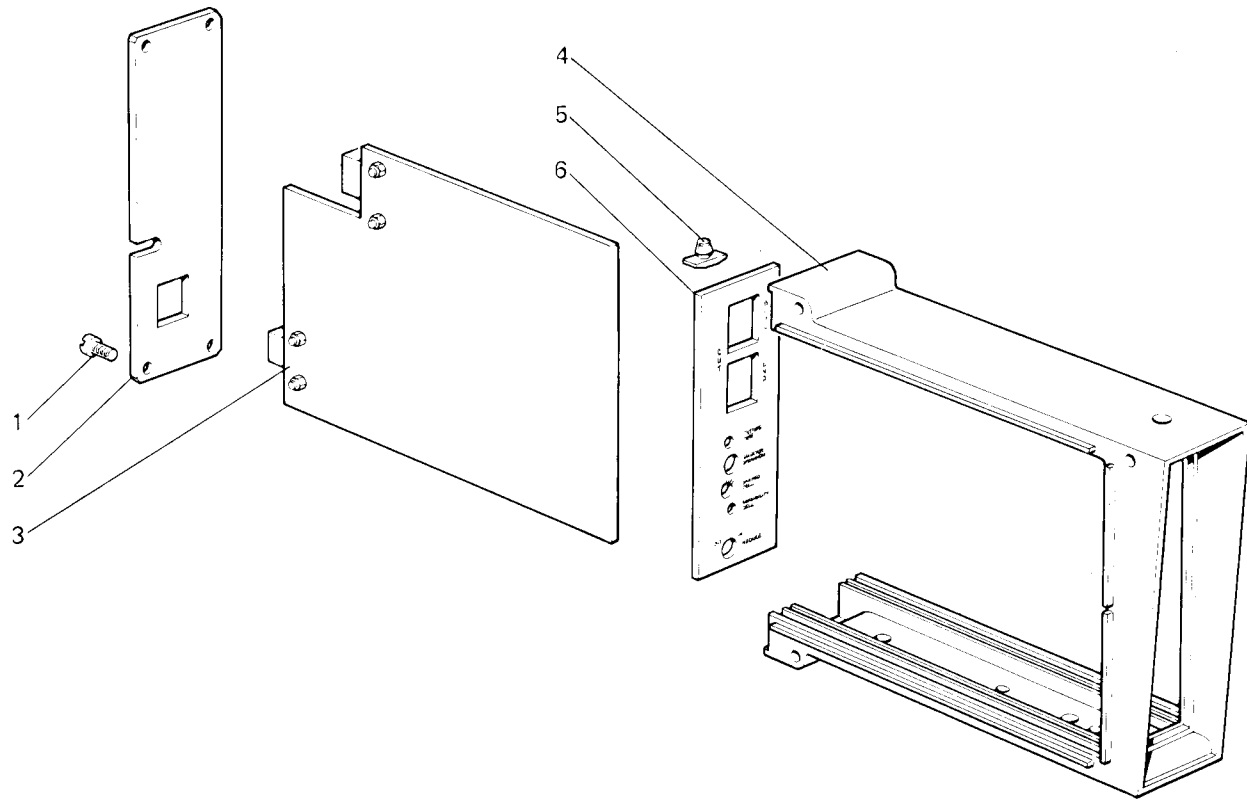


Fig. N. Abb. N.	Part. N. Bestell N. Piece N. Pieza N.	Qt. Anzahl	DESCRIZIONE	DESCRIPTION	DESCRIPTION	BENENNUNG	DESCRIPCION
—	931005-4-01	1	modulo (M002.1)	module (M002.1)	module (M002.1)		
1	721454-2-00	4	vite	screw	vis		
2	929873-0-00	1	pannello posteriore	rear panel	panneau arrière		
3	929931-4-01	1	pannello completo	panel assembly	panneau complet		
4	929850-0-00	1	scatola	box	boîte		
5	929861-0-00	2	bottono di fissaggio	button	bouton		
6	929862-0-00	1	pannello anteriore	front panel	panneau avant		

Fig. N. Abb. N.	Part. N. Bestell N. Piece N. Pieza N.	Qt. Anzahl	DESCRIZIONE	DESCRIPTION	DESCRIPTION	Fig. N. Abb. N.	Part. N. Bestell N. Piece N. Pieza N.	Qt. Anzahl	DESCRIZIONE	DESCRIPTION	DESCRIPTION				
—	929931-4-01	1	pannello (M 002.1)	panel (M002.1)	panneau (M 002.1)	PT2	929882-0-00	1	potenziometro	potentiometer	potentiomètre				
1	927387-0-00	1	connettore	connection	connecteur	DZ1	927462-0-00	1	diodo	diode	diode				
2	741665-2-00	4	vite	screw	vis	DZ2	927463-0-00	1	diodo	diode	diode				
3	733503-2-00	4	dado	nut	écrou	D1-D2	923409-0-00	4	diodo	diode	diode				
4	927228-0-00	5	zoccolo	block	socle	D3-D4									
5	929875-0-01	1	pannello	panel	panneau	DL1	927468-0-00	1	porta LED	LED holder	porte LED				
6	928218-0-00	2	zoccolo	block	socle	JA1-JA3	925631-0-00	2	integrato	integrator	integrateur				
7	929924-4-00	2	commutatore	commutator	commutateur	JA2	927471-0-00	1	integrato	integrator	integrateur				
8	927469-0-00	1	diodo LED	LED diode	diode LED	IC1	929893-0-00	1	integrato	integrator	integrateur				
9	923558-0-00	2	zoccolo	block	socle	IC2-IC4	927230-0-00	2	integrato	integrator	integrateur				
10	927470-0-00	1	zoccolo	block	socle	IC3-IC5	929891-0-00	2	integrato	integrator	integrateur				
11	925625-0-00	15	terminale	terminal	extrémité	IC6-IC8	927229-0-00	2	integrato	integrator	integrateur				
12	920258-0-10	1	fascetta	clamp	bride	S	927474-0-00	1	interruttore	switch	interrupteur				
13	927386-0-00	1	connettore	connection	connecteur	I	926537-0-00	1	interruttore	switch	interrupteur				
14	902668-0-00	9	contatto	contact	contact	A-B-C-D	926548-0-00	7	ponticello	connection	connexion				
15	902665-0-00	1	connettore	connection	connecteur	E-F-G									
16	929935-0-00	1	anello marcafili	ring	anneau										
17	923708-0-00	1	presa	socket	prise										
R1	925662-0-00	1	resistenza	resistor	résistance										
R2-R8	927446-0-00	2	resistenza	resistor	résistance										
R3	928167-0-00	1	resistenza	resistor	résistance										
R4-R17- R18-R32 R21-R28	925661-0-00	12	resistenza	resistor	résistance										
R5						943799-0-00	1	resistenza	resistor	résistance					
R6						923623-0-00	1	resistenza	resistor	résistance					
R7	927442-0-00	1	resistenza	resistor	résistance										
R9	927448-0-00	1	resistenza	resistor	résistance										
R10	927449-0-00	1	resistenza	resistor	résistance										
R11	927444-0-00	1	resistenza	resistor	résistance										
R12	925973-0-00	1	resistenza	resistor	résistance										
R13	927445-0-00	1	resistenza	resistor	résistance										
R14	927443-0-00	1	resistenza	resistor	résistance										
R15	927447-0-00	1	resistenza	resistor	résistance										
R16	927226-0-00	1	resistenza	resistor	résistance										
R19-R20	925663-0-00	2	resistenza	resistor	résistance										
R29	929885-0-00	1	resistenza	resistor	résistance										
R30	925971-0-00	1	resistenza	resistor	résistance										
C1-C6	927383-0-00	2	condensatore	condenser	condensateur										
C2	928162-0-00	1	condensatore	condenser	condensateur										
C3	927380-0-00	1	condensatore	condenser	condensateur										
C4	927381-0-00	1	condensatore	condenser	condensateur										
C5-C7 C8-C9	927382-0-00	4	condensatore	condenser	condensateur										
C11						927223-0-00	1	condensatore	condenser	condensateur					
C12	929879-0-00	1	condensatore	condenser	condensateur										
TR2	927231-0-00	1	transistor	transistor	transistor										
PT1	940429-0-00	1	potenziometro	potentiometer	potentiomètre										

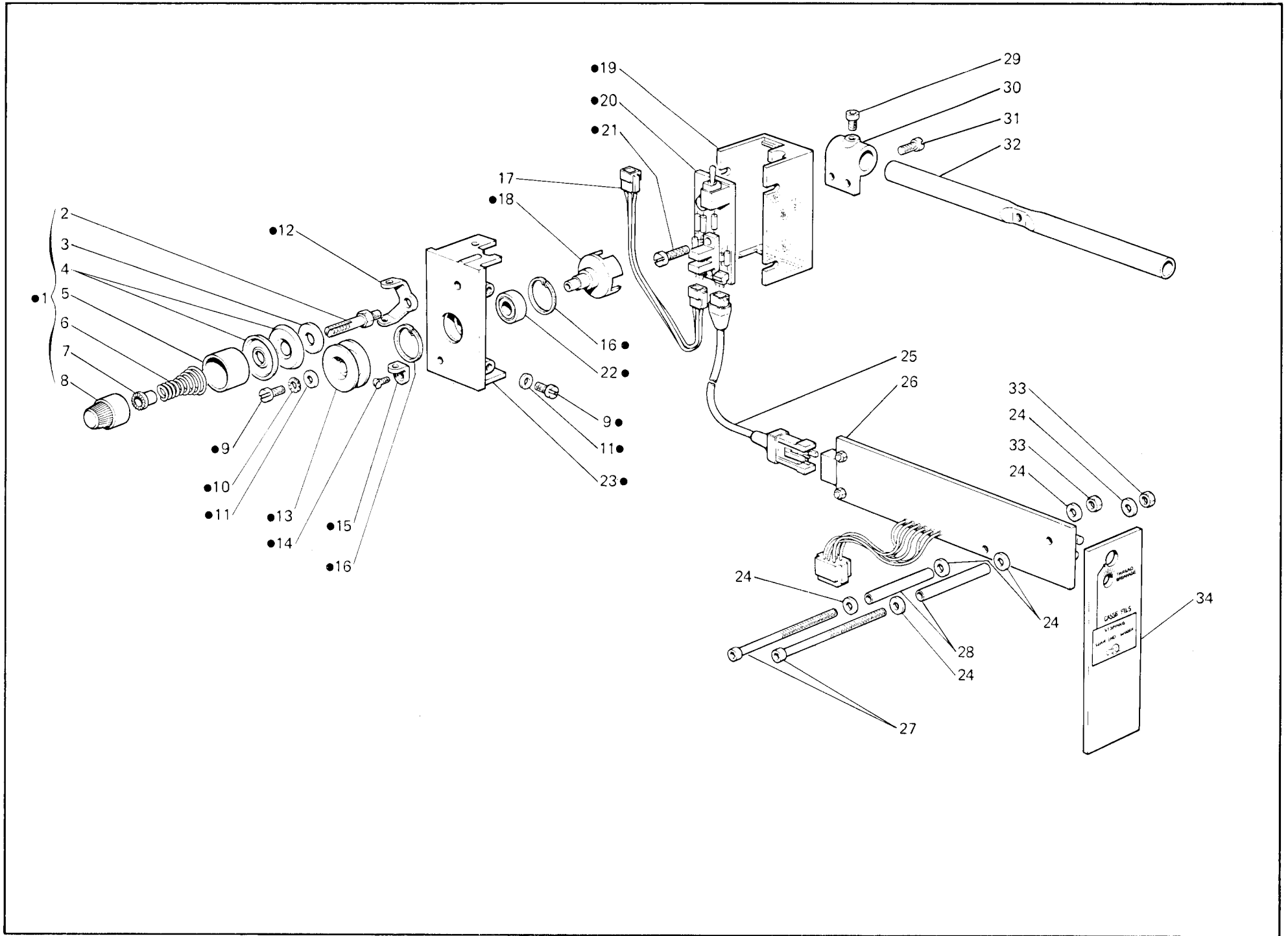


Fig. N. Abb. N.	Part. N. Bestell N. Piece N. Pieza N.	Qt. Anzahl	DESCRIZIONE	DESCRIPTION	DESCRIPTION	BENENNUNG	DESCRIPCION
			SOLO A RICHIESTA	ONLY ON REQUEST	SEULEMENT SUR DEMANDE		
—	928230-4-00	1	gruppo casse-fils rotante	rotating thread control assembly	casse-fils tournant complet		
●	926521-4-00	3	casse-fils rotante completo	rotating thread control assembly	casse-fils tournant complet		
1	206345-4-00	3	tensione completa	tension assembly	tension complète		
2	202225-0-11	3	perno	pin	pivot		
3	206754-0-00	3	rondella	washer	rondelle		
4	300218-0-10	6	disco tensione	tension disc	disque tension		
5	202556-0-00	3	scodellino	cup	cuvette		
6	202681-0-10	3	molla	spring	ressort		
7	202229-0-10	3	bussola	bush	bague		
8	202558-2-00	3	pomoio	knob	pommeau		
9	741665-2-00	15	vite	screw	vis		
10	703203-0-00	3	rondella dentata	washer	rondelle		
11	704004-0-00	15	rondella	washer	rondelle		
12	308503-0-01	3	guidafilo	thread guide	guide-fil		
13	926534-0-00	3	puleggia	pulley	poulie		
14	744631-2-00	3	vite	screw	vis		
15	926535-0-00	3	passafilo	thread guide	passé-fil		
16	700115-0-00	6	anello di fermo	circlip	circlip		
17	926527-4-00	2	cavo di collegamento	connection cable	cable		
18	926533-0-00	3	alberino	shaft	arbre		
19	926532-0-00	3	supporto	support	support		
20	926530-4-00	3	pannello SF1 completo	SF1 panel assembly	panneau SF1 complet		
21	722072-0-00	6	vite	screw	vis		
22	943904-0-00	3	cuscinetto	bearing	coussinet		
23	926531-0-00	3	supporto	support	support		
24	930611-0-00	8	rondella isolante	insulating washer	rondelle isolant		
25	926528-4-00	1	cavo adattatore	cable	cable		
26	926545-4-00	1	pannello M004.0 completo	M004.0 panel assembly	panneau M004.0 complet		
27	722561-2-00	2	vite	screw	vis		
28	926546-0-00	2	distanziale	spacer	entretoise		
29	722411-2-00	3	vite	screw	vis		
30	926536-0-00	3	blocchetto	block	bloc		
31	741665-2-00	6	vite	screw	vis		
32	926574-0-00	1	tubo di sostegno	pipe	tube		
33	733505-2-00	2	dado	nut	écrou		
34	926543-0-00	1	pannello anteriore	front panel	panneau avant		
			N.B. il part. fig. 32 sostituisce il part. N. 991108-2-00 del porta bobine	the part. fig. 32 replace the part. N. 991108-2-00 of the bobbin carrier	le piece fig. 32 remplace le piece N. 991108-2-00 du porte bobine		
			PEZZI ANNULLATI DI TAV. 9 per il montaggio casse-fils	CANCELLED PARTS OF TAB. 9 for thread control mounting	PIECES ANNULÉES A TAB. 9 pour le montage du casse-fils		
1	722073-2-00	1	vite	screw	vis		
2	926549-0-00	1	piastrina	sheet	plaquette		
10	733505-2-00	1	dado	nut	écrou		
17	929870-0-00	1	pannello anteriore	front panel	panneau avant		

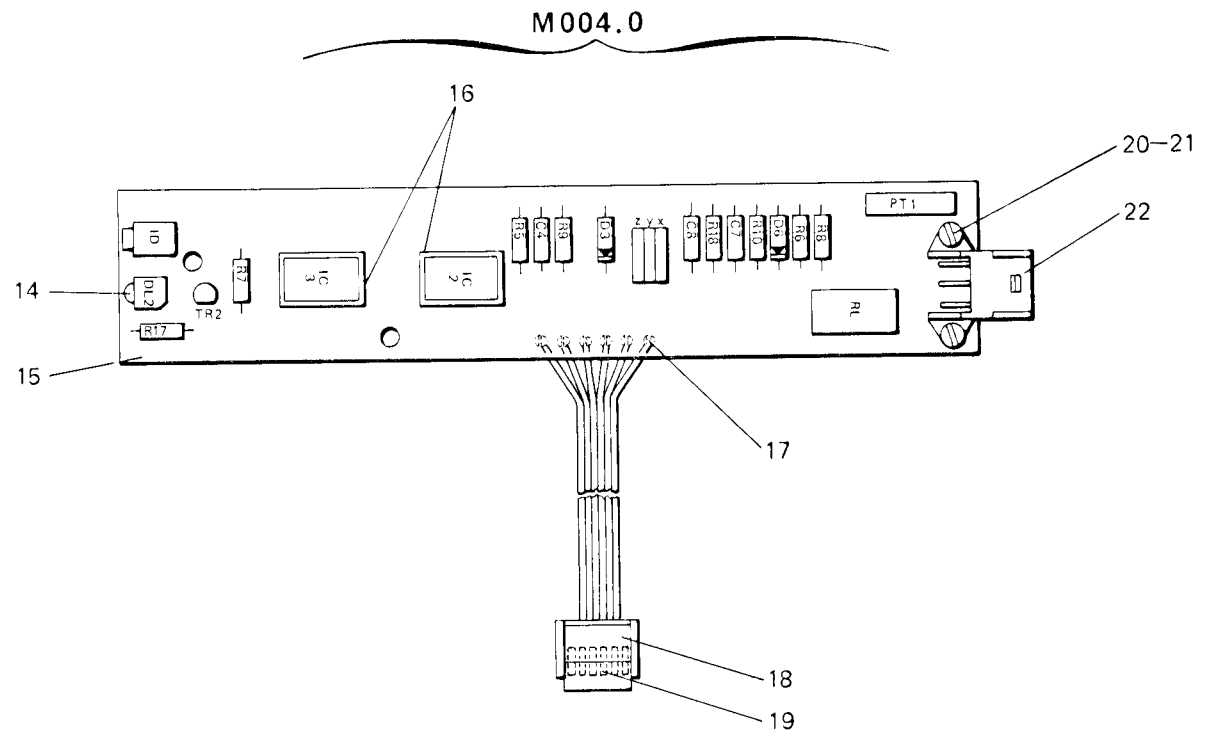
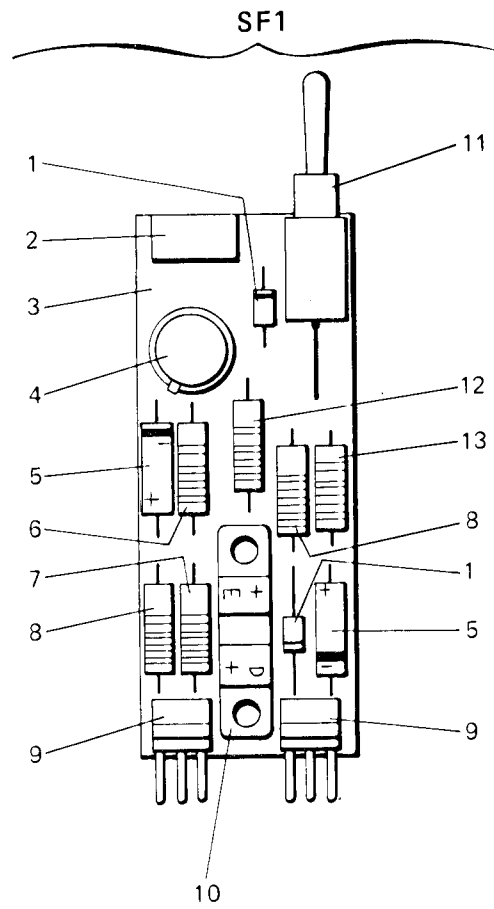
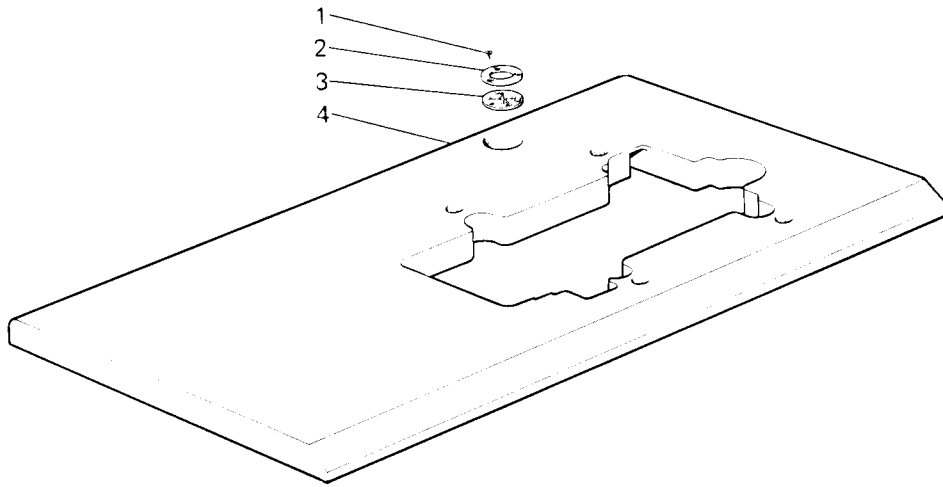
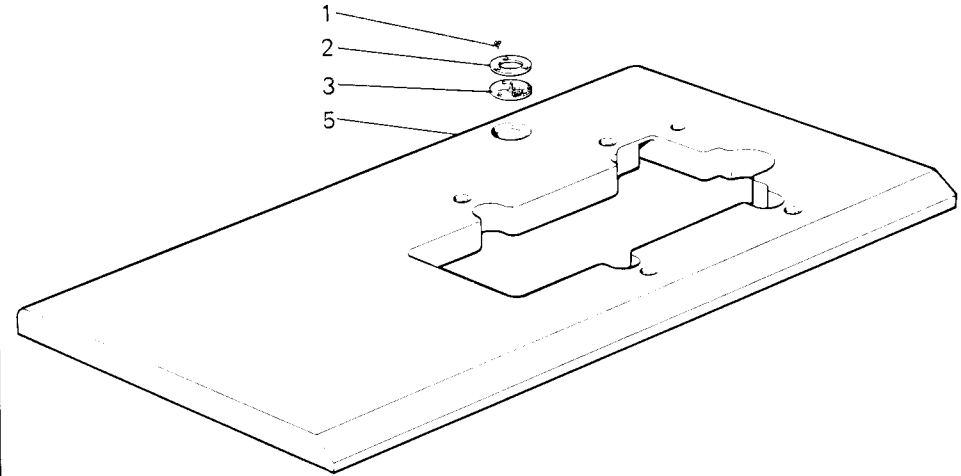


Fig. N.	Part. N.	Qt.	DESCRIZIONE	DESCRIPTION	DESCRIPTION	BENENNUNG	DESCRIPCION
Abb. N.	Piece N. Bestell N. Pieza N.	Anzahl					
			SOLO A RICHIESTA	ONLY ON REQUEST	SEULEMENT SUR DEMANDE		
-	926530-4-00	1	pannello SF1 completo	SF 1 panel assembly	panneau SF1 complet		
-	926545-4-00	1	pannello M004.0 completo	M004.0 panel assembly	panneau M004.0 complet		
1	923409-0-00	2	diodo	diode	diode		
2	926538-0-00	1	potenziometro	potentiometer	potentiomètre		
3	926529-0-00	1	pannello	panel	panneau		
4	925952-0-00	1	transistor	transistor	transistor		
5	929884-0-00	2	condensatore	condenser	condensateur		
6	923623-0-00	1	resistenza	resistor	résistance		
7	927446-0-00	1	resistenza	resistor	résistance		
8	927443-0-00	2	resistenza	resistor	résistance		
9	926539-0-00	2	spina	electrical plug	fiche		
10	926504-0-00	1	sensore	sensor	senseur		
11	926537-0-00	1	interruttore	switch	interrupteur		
12	927226-0-00	1	resistenza	resistor	résistance		
13	925974-0-00	1	resistenza	resistor	résistance		
14	927469-0-00	1	diodo LED	LED diode	diode LED		
15	926544-0-00	1	pannello	panel	panneau		
16	927228-0-00	2	zoccolo	block	socle		
17	925625-0-00	6	terminale	terminal	extrémité		
18	926542-0-00	1	connettore	connection	connecteur		
19	926541-0-00	6	contatto	contact	contact		
20	741665-2-00	2	vite	screw	vis		
21	733503-2-00	2	dado	nut	écrou		
22	927386-0-00	1	connettore	connection	connecteur		
R5	927447-0-00	1	resistenza	resistor	résistance		
R6	926635-0-00	1	resistenza	resistor	résistance		
R7	926634-0-00	1	resistenza	resistor	résistance		
R8	925661-0-00	1	resistenza	resistor	résistance		
R9	925659-0-00	1	resistenza	resistor	résistance		
R10	927443-0-00	1	resistenza	resistor	résistance		
R17	927226-0-00	1	resistenza	resistor	résistance		
R18	923623-0-00	1	resistenza	resistor	résistance		
C4-C7	929884-0-00	3	condensatore	condenser	condensateur		
C8							
D3-D6	923409-0-00	2	diodo	diode	diode		
PT1	926633-0-00	1	potenziometro	potentiometer	potentiomètre		
TR2	929885-0-00	1	transistor	transistor	transistor		
RL	929577-0-00	1	relè	relay	relais		
IC2	929893-0-00	1	integrato	integrator	integrateur		
IC3	927230-0-00	1	integrato	integrator	integrateur		
DL2	927468-0-00	1	porta LED	LED holder	porte LED		
ID	926537-0-00	1	interruttore	switch	interrupteur		
XYZ	926547-0-00	3	ponticello	connection	connexion		

BANCALE REGOLABILE
ADJUSTABLE STAND
BATI REGLABLE

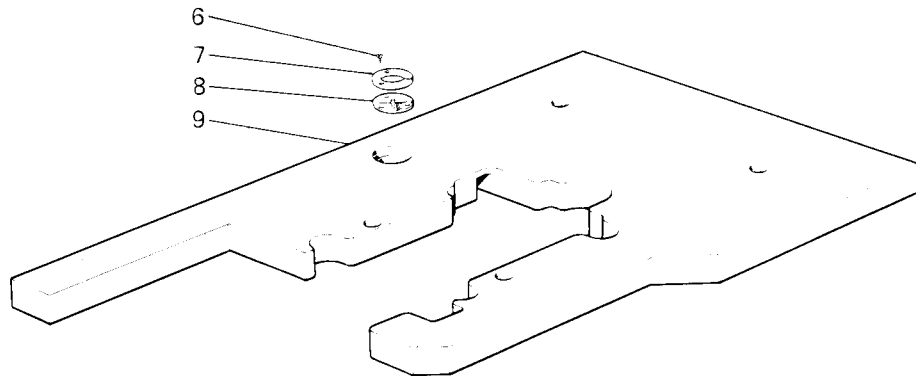


CON SCARICA RITAGLI
WITH DISCHARGED OF LENGTHS
AVEC DECHARGE DES CHUTES

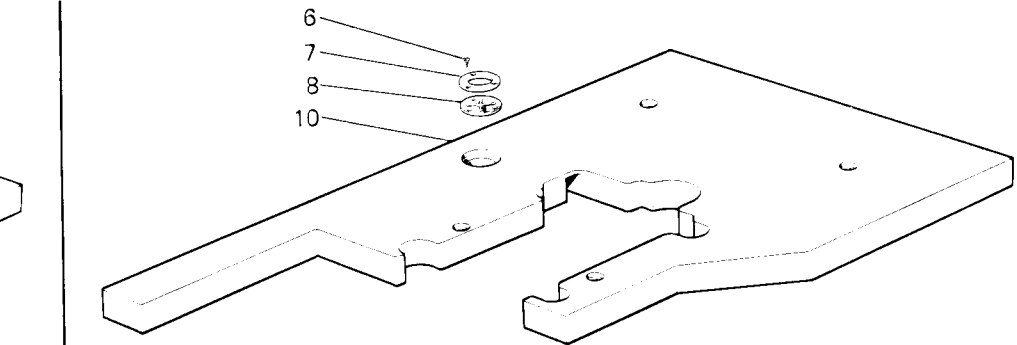


SENZA SCARICA RITAGLI
WITHOUT DISCHARGED OF LENGTHS
SANS DECHARGE DES CHUTES

BANCALE A COLONNA
COLUMN STAND
BATI COLONNE



CON SCARICA RITAGLI
WITH DISCHARGED OF LENGTHS
AVEC DECHARGE DES CHUTES



SENZA SCARICA RITAGLI
WITHOUT DISCHARGED OF LENGTHS
SANS DECHARGE DES CHUTES

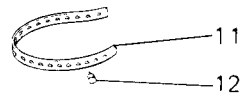


Fig. N. Abb. N.	Part. N. Bestell N. Pieze N.	Qt. Anzahl	DESCRIZIONE	DESCRIPTION	DESCRIPTION	BENENNUNG	DESCRIPCION
			SOLO PER BANCALE REGOLABILE	ONLY FOR ADJUSTABLE STAND	SEULEMENT POUR BATI REGLABLE		
1	731244-0-00	3	vite	screw	vis		
2	921175-0-00	1	anello	ring	anneau		
3	921176-0-00	1	disco	disc	disque		
4	929943-2-00	1	tavola con scarica ritagli	table with lengths discharger	table avec decharge des chutes		
5	929942-2-00	1	tavola senza scarica ritagli	table without lengths discharger	table sans decharge des chutes		
			SOLO PER BANCALE A COLONNA	ONLY FOR COLUMN STAND	SEULEMENT POUR BATI COLONNE		
6	731244-0-00	3	vite	screw	vis		
7	921175-0-00	1	anello	ring	anneau		
8	921176-0-00	1	disco	disc	disque		
9	929945-2-00	1	tavola con scarica ritagli	table with lengths discharger	table avec decharge des chutes		
10	929944-2-00	1	tavola senza scarica ritagli	table without lengths discharger	table sans decharge des chutes		
11	990441-0-10	2	cinturino	strap	bride		
12	990442-0-10	2	bottoncino	button	bouton		

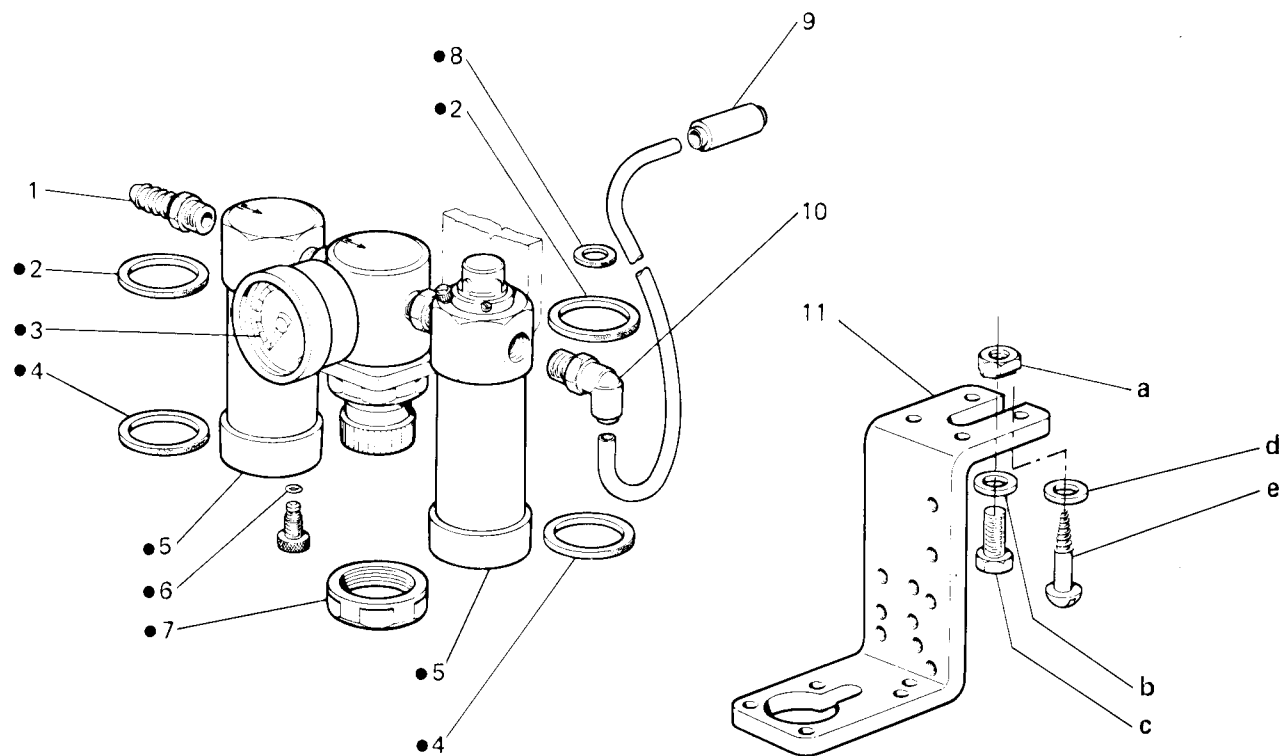


Fig. N. Abb. N.	Part. N. Bestell N. Pieze N. Pieza N.	Qt. Anzahl	DESCRIZIONE	DESCRIPTION	DESCRIPTION	BENENNUNG	DESCRIPCION
			SOLO PER 194 G1	ONLY FOR 194 G1	SEULEMENT POUR 194 G1		
—	929848-4-00	1	gruppo F.R.L. (escl.figg.9-A-B-C-D-E)	F.R.L. assembly (excl.figs 9-A-B-C-D-E)	F.R. L. complet (excl.figs 9-A-B-C-D-E)		
●	922773-4-10	1	F.R.L. completo	F.R.L. assembly	F.R. L. complet		
1	922775-0-00	1	attacco	union pipe	raccord		
2	924991-0-00	2	guarnizione	gasket	garniture		
3	922846-4-00	1	manometro	manometer	manometre		
4	924990-0-00	2	guarnizione	gasket	garniture		
5	924992-0-00	2	tazza	container	tasse		
6	701001-0-00	1	guarnizione	gasket	garniture		
7	924814-0-00	1	dado	nut	écrou		
8	924994-0-00	1	guarnizione	gasket	garniture		
9	941531-4-00	1	raccordo	connection pipe	raccord		
10	941514-4-00	1	raccordo	connection pipe	raccord		
11	925557-0-00	1	supporto	support	support		
			SOLO PER BANCALE REGOLABILE	ONLY FOR ADJUSTABLE STAND	SEULEMENT POUR BATI REGLABLE		
a	902272-0-00	1	dado	nut	écrou		
b	704011-4-00	1	rondella	washer	rondelle		
c	720485-4-00	1	vite	screw	vis		
			SOLO PER BANCALE A COLONNA	ONLY FOR COLUMN STAND	SEULEMENT POUR BATI COLONNE		
d	704013-2-00	1	rondella	washer	rondelle		
e	731643-0-00	1	vite	screw	vis		

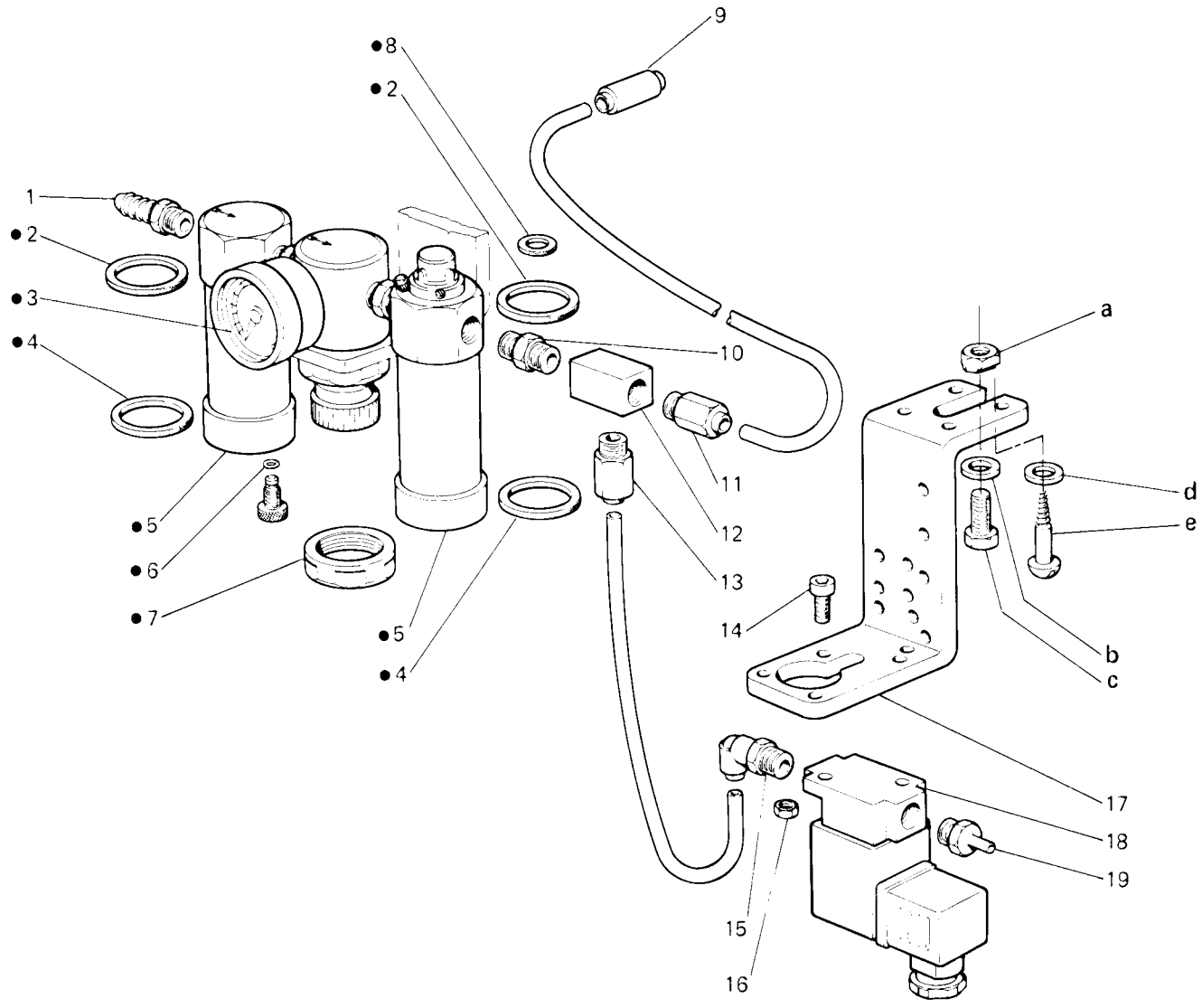


Fig. N. Abb. N.	Part. N. Bestell N. Piece N. Pieza N.	Qt. Anzahl	DESCRIZIONE	DESCRIPTION	DESCRIPTION	BENENNUNG	DESCRIPCION
			SOLO PER 194 GA	ONLY FOR 194 GA	SEULEMENT POUR 194 GA		
—	929732-4-00	1	gruppo F.R.L. (escl.figg.9-A-B-C-D-E)	F.R.L. assembly (excl.figs 9-A-B-C-D-E)	F.R.L.complet (exclu figs 9-A-B-C-D-E)		
●	922773-4-10	1	F.R.L. completo	F.R.L. assembly	F.R.L. complet		
1	922775-0-00	1	attacco	union pipe	raccord		
2	924991-0-00	2	guarnizione	gasket	garniture		
3	922846-4-00	1	manometro	manometer	manomètre		
4	924990-0-00	2	guarnizione	gasket	garniture		
5	924992-0-00	2	tazza	container	tasse		
6	701001-0-00	1	guarnizione	gasket	garniture		
7	924814-0-00	1	dado	nut	écrou		
8	924994-0-00	1	guarnizione	gasket	garniture		
9	941531-4-00	1	raccordo	connection pipe	raccord		
10	941417-0-00	1	nipplo	nipple	raccord a vis		
11	941506-4-00	1	raccordo	connection pipe	raccord		
12	922765-0-00	1	raccordo	connection pipe	raccord		
13	941504-4-00	1	raccordo	connection pipe	raccord		
14	722421-2-00	2	vite	screw	vis		
15	941511-4-00	1	raccordo	connection pipe	raccord		
16	733505-2-00	2	dado	nut	écrou		
17	925557-0-00	1	supporto	support	support		
18	925234-4-10	1	elettrovalvola	electrovalve	soupape électrique		
19	924870-0-10	1	attacco	union pipe	raccord		
			SOLO PER BANCALE REGOLABILE	ONLY FOR ADJUSTABLE STAND	SEULEMENT POUR BATI REGLABLE		
a	902272-0-00	1	dado	nut	écrou		
b	704011-4-00	1	rondella	washer	rondelle		
c	720485-4-00	1	vite	screw	vis		
			SOLO PER BANCALE A COLONNA	ONLY FOR COLUMN STAND	SEULEMENT POUR BATI COLONNE		
d	704013-2-00	1	rondella	washer	rondelle		
e	731643-0-00	1	vite	screw	vis		

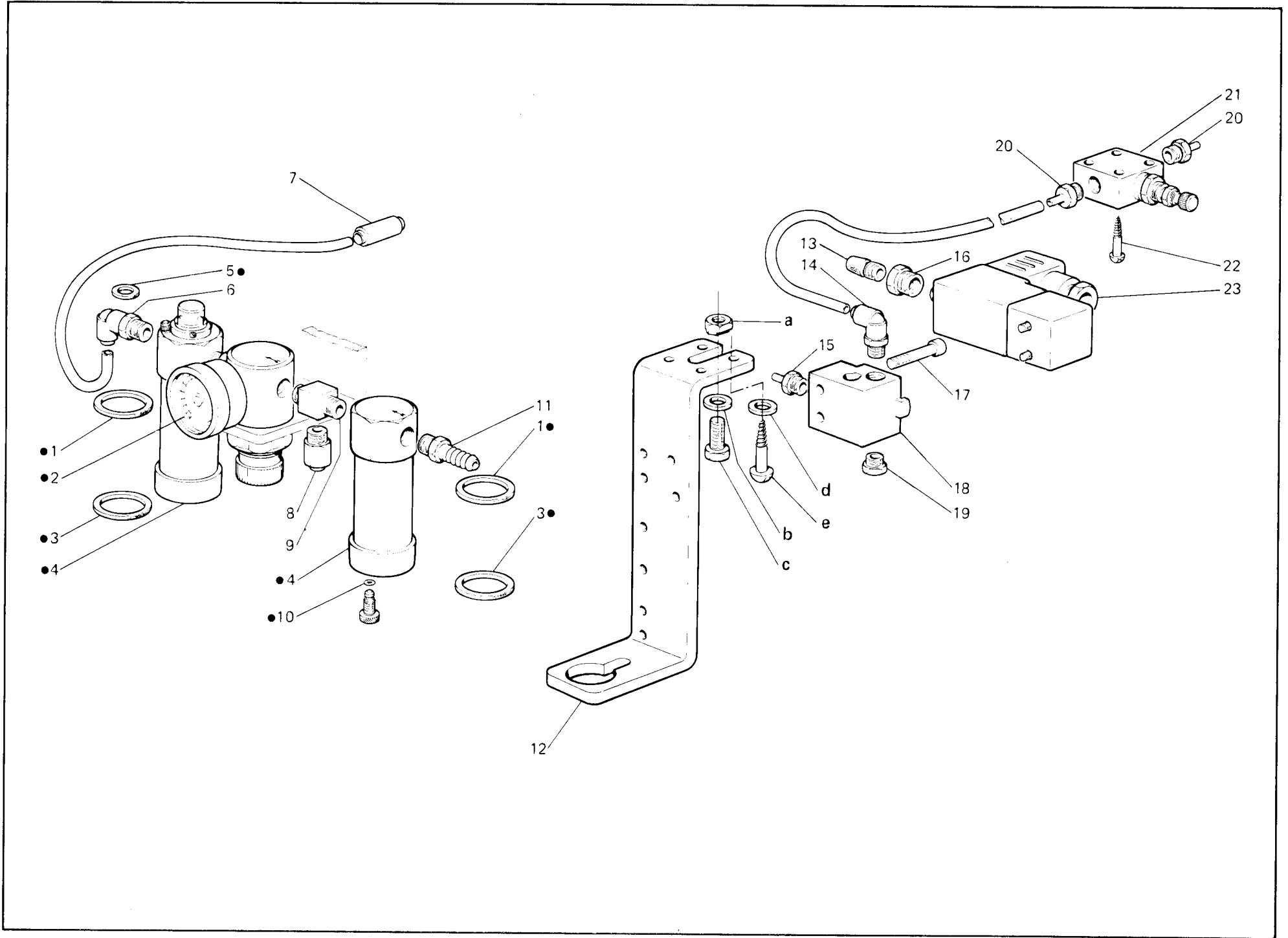


Fig. N. Abb. N.	Part. N. Bestell N. Piece N. Pieza N.	Qt. Anzahl	DESCRIZIONE	DESCRIPTION	DESCRIPTION	BENENNUNG	DESCRIPCION
			SOLO PER 194 GB	ONLY FOR 194 GB	SEULEMENT POUR 194 GB		
—	931251-4-00	1	gruppo F.R.L. (escl. figg. 7-20-21 22-A-B-C-D-E)	F.R.L. assembly (excl. figs 7-20-21 22-A-B-C-D-E)	F.R.L. complet (exclu figs 7-20-21 22-A-B-C-D-E)		
●	927901-4-10	1	F.R.L. completo	F.R.L. assembly	F.R.L. complet		
1	924991-0-00	2	guarnizione	gasket	garniture		
2	922846-4-00	1	manometro	manometer	manomètre		
3	924990-0-00	2	guarnizione	gasket	garniture		
4	924992-0-00	2	tazza	container	tasse		
5	924994-0-00	1	guarnizione	gasket	garniture		
6	941514-4-00	1	raccordo	connection pipe	raccord		
7	941531-4-00	1	raccordo	connection pipe	raccord		
8	941504-4-00	1	raccordo	connection pipe	raccord		
9	922772-0-00	1	raccordo	connection pipe	raccord		
10	701001-0-00	1	guarnizione	gasket	garniture		
11	922775-0-00	1	attacco	union pipe	raccord		
12	925562-0-00	1	supporto	support	support		
13	924851-0-10	1	silenziatore	silencer	silencieux		
14	941511-4-00	1	raccordo	connection pipe	raccord		
15	924870-0-00	1	attacco	union pipe	raccord		
16	943202-0-00	1	riduzione	reduction	reduction		
17	722481-2-00	2	vite	screw	vis		
18	942981-4-00	1	base	base	base		
19	925779-0-00	1	tappo	plug	bouchon		
20	924870-0-00	2	attacco	union pipe	raccord		
21	923800-0-00	1	dosatore	dosimeter	doseur		
22	731105-0-00	4	vite	screw	vis		
23	940421-4-00	1	elettrovalvola	electrovalve	soupape électrique		
			SOLO PER BANCALE REGOLABILE	ONLY FOR ADJUSTABLE STAND	SEULEMENT POUR BATI REGLABLE		
a	902272-0-00	1	dado	nut	écrou		
b	704011-4-00	1	rondella	washer	rondelle		
c	720485-4-00	1	vite	screw	vis		
			SOLO PER BANCALE A COLONNA	ONLY FOR COLUMN STAND	SEULEMENT POUR BATI COLONNE		
d	704013-2-00	1	rondella	washer	rondelle		
e	731643-0-00	1	vite	screw	vis		

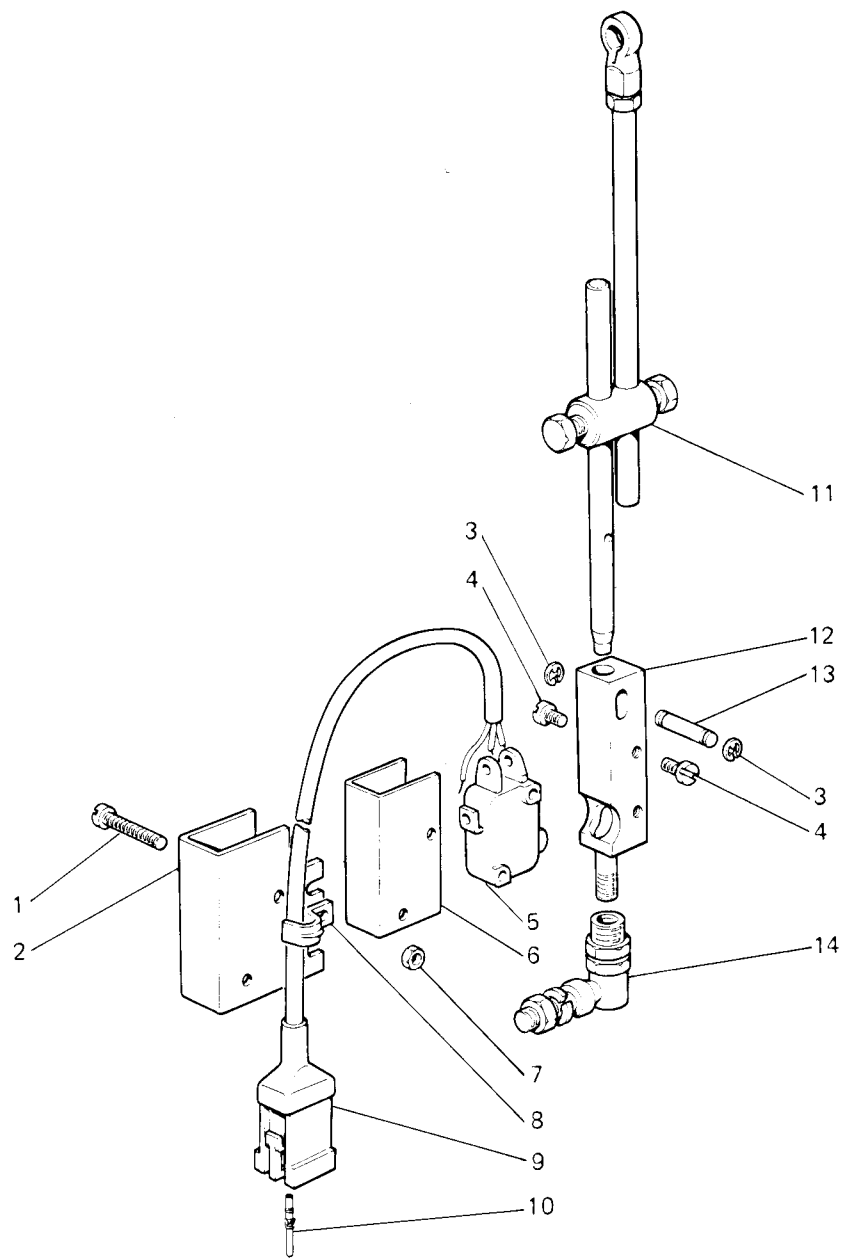


Fig. N. Abb. N.	Part. N. Piese N. Bestell N. Pieza N.	Qt. Anzahl	DESCRIZIONE	DESCRIPTION	DESCRIPTION	BENENNUNG	DESCRIPCION
—	929889-4-00	1	tirante completo	tie-rod assembly	tirant complet		
1	721065-2-00	2	vite	screw	vis		
2	926112-0-00	1	carterino	protection cover	carter de protection		
3	700205-0-00	2	anello di fermo	circlip	circlip		
4	741630-2-00	4	vite	screw	vis		
5	921076-0-10	1	microinterruttore	microswitch	micro-interrupteur		
6	926114-0-00	1	isolante	insulating	isolant		
7	746002-2-00	2	dado	nut	écrou		
8	923277-0-10	1	gaffetta	clip	agrafe		
9	902663-0-00	1	connettore	connection	connecteur		
10	902668-0-00	2	contatto	contact	contact		
11	929888-0-00	1	tirante	tie-rod	tirant		
12	926111-0-00	1	corpo	body	corps		
13	926113-0-00	1	perno	pin	pivot		
14	900941-0-00	1	snodo	knuckle	joint		

Fig. N. Abb. N.	Part. N. Piece N. Bestell N. Pieza N.	Qt. Anzahl	DESCRIZIONE	DESCRIPTION	DESCRIPTION	BENENNUNG	DESCRIPCION
			SOLO PER 194 GB	ONLY FOR 194 GB	SEULEMENT POUR 194 GB		
●	929471-3-00	1	bocchetta completa	nozzle assembly	embouchure complet		
1	929472-0-00	1	bocchetta	nozzle	embouchure		
2	704108-2-00	1	rondella	washer	rondelle		
3	944165-2-00	1	soffiatore	blower	souffleur		
4	927393-0-00	1	cuffia	cover	couverture		
5	990996-0-00	1	cassetta	case	caisse		
6	746402-2-00	1	dado	nut	écrou		
7	300483-0-10	2	vite	screw	vis		
8	944167-0-00	1	tubo	pipe	tube		
9	990187-0-10	1	gancio	hook	crochet		
10	944381-0-00	1	fascetta	clamp	bride		

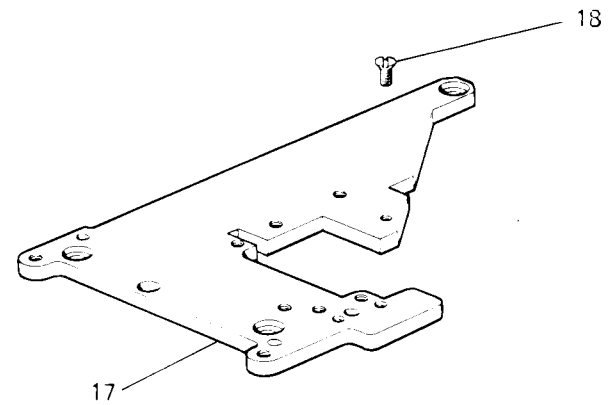
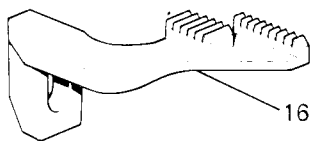
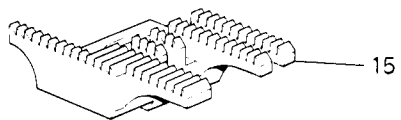
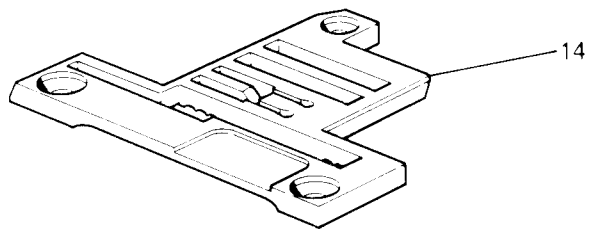
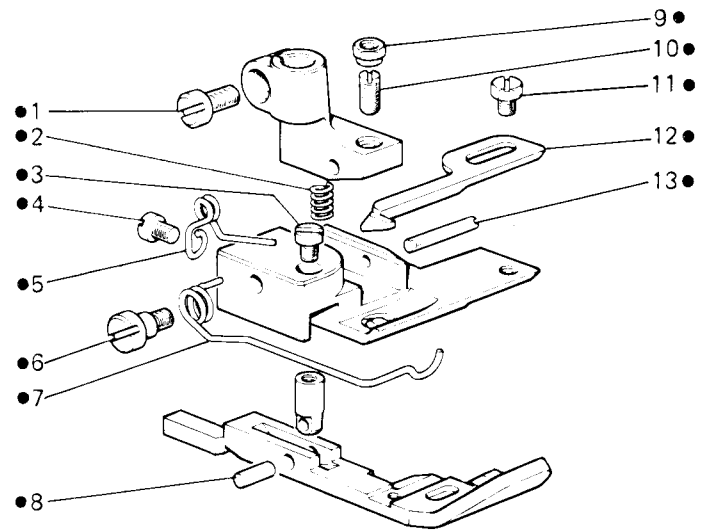


Fig. N. Abb. N.	Part. N. Bestell N. Piece N. Pieza N.	Qt. Anzahl	DESCRIZIONE	DESCRIPTION	DESCRIPTION	BENENNUNG	DESCRIPCION
			SOLO PER TESTA	ONLY FOR HEAD 263-34-2DR-27	SEULEMENT POUR TETE		
●	929704-3-00	1	piedino completo	presserfoot assembly	pied-presseur complet		
1	741721-2-00	1	vite	screw	vis		
2	303052-0-00	1	molla	spring	ressort		
3	741414-2-00	1	vite	screw	vis		
4	721411-2-00	1	vite	screw	vis		
5	300119-0-11	1	molla	spring	ressort		
6	743134-2-00	1	vite	screw	vis		
7	302821-0-10	1	molla	spring	ressort		
8	300118-0-10	1	spina	pin	goupille		
9	301598-0-11	1	dado	nut	écrou		
10	301596-0-11	1	vite	screw	vis		
11	203658-0-10	1	vite	screw	vis		
12	304411-0-11	1	guida	guide	guide		
13	300120-0-10	1	spina	pin	goupille		
14	929707-0-00	1	placca ago calibro 4,5	needle plate 4,5 gauge	plaque a aiguille cal. 4,5		
15	929708-0-00	1	griffa principale passo 1,5	main feed dog - 1,5	griffe principale - 1,5		
16	929709-0-00	1	griffa differenziale passo 1,5	differential feed dog - 1,5	griffe différentielle - 1,5		
17	929752-2-00	1	piastra porta placca	plate	plaque		
18	744922-2-00	1	vite	screw	vis		

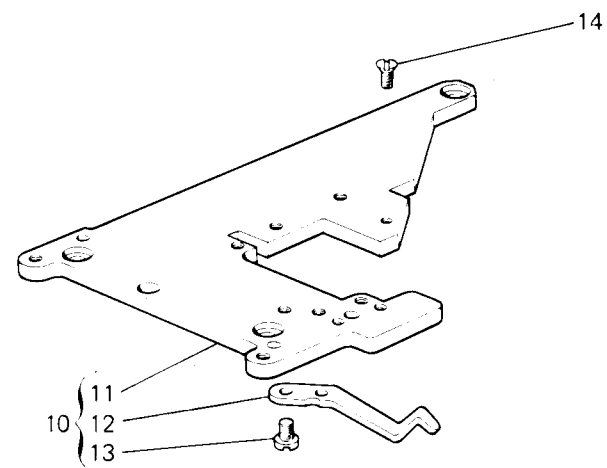
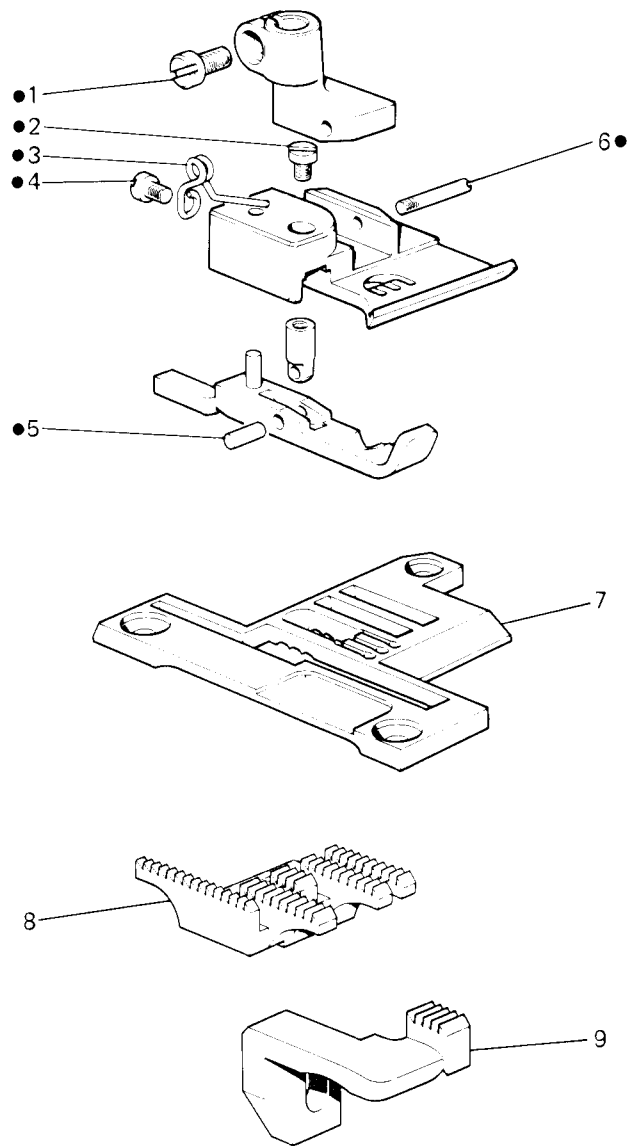


Fig. N. Abb. N.	Part. N. Piece N. Bestell N. Pieza N.	Qt. Anzahl	DESCRIZIONE	DESCRIPTION	DESCRIPTION	BENENNUNG	DESCRIPCION
			SOLO PER TESTA	ONLY FOR HEAD	SEULEMENT POUR TETE		
				263-16-3MD-04			
●	929790-3-00	1	piedino completo	presserfoot assembly	pied-presseur complet		
1	741721-2-00	1	vite	screw	vis		
2	741414-2-00	1	vite	screw	vis		
3	300119-0-11	1	molla	spring	ressort		
4	721411-2-00	1	vite	screw	vis		
5	300118-0-10	1	spina	pin	goupille		
6	300120-0-10	1	spina	pin	goupille		
7	929795-0-00	1	placca ago calibro 4,5	needle plate 4,5 gauge	plaque à aiguille cal. 4,5		
8	929793-0-00	1	griffa principale passo 1,5	main feed dog - 1,5	griffe principale - 1,5		
9	929794-0-00	1	griffa differenziale passo 1,5	differential feed dog - 1,5	griffe différentielle - 1,5		
10	929753-4-00	1	piastra completa	plate assembly	plaque complet		
11	929752-2-00	1	piastra	plate	plaque		
12	300277-0-10	1	molla	spring	ressort		
13	721424-2-00	2	vite	screw	vis		
14	744922-2-00	1	vite	screw	vis		

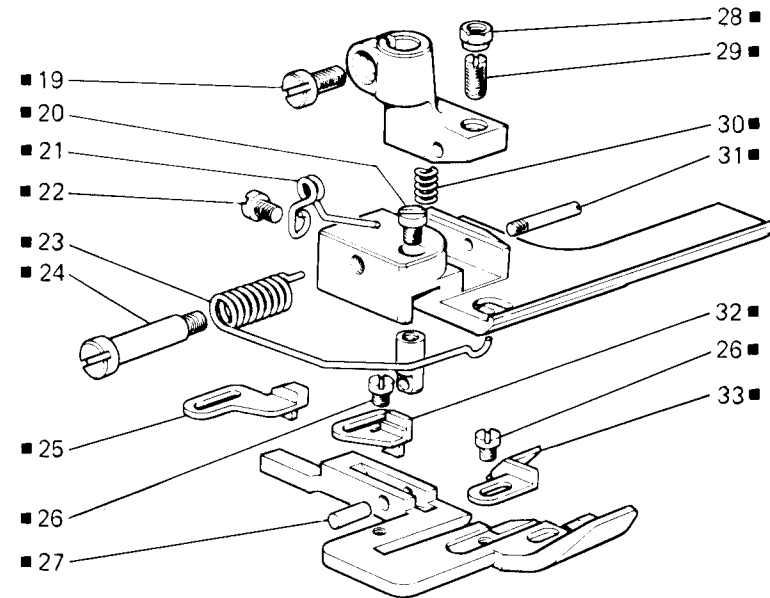
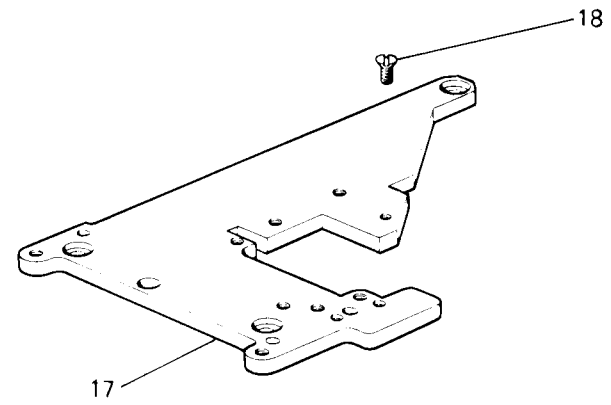
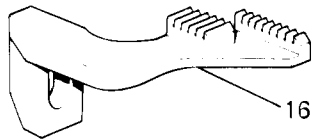
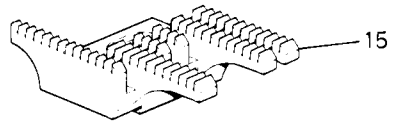
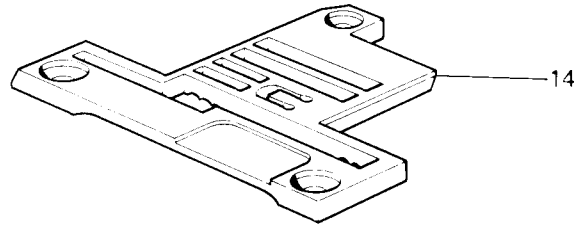
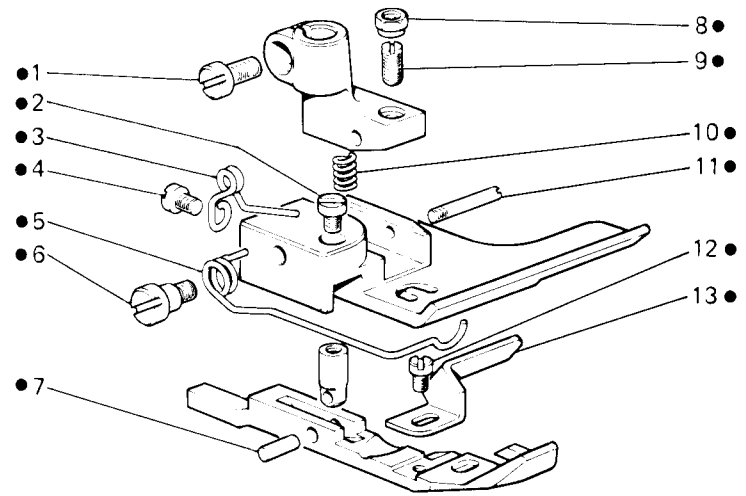


Fig. N. Abb. N.	Part. N. Piece N. Bestell N. Pieza N.	Qt. Anzahl	DESCRIZIONE	DESCRIPTION	DESCRIPTION	BENENNUNG	DESCRIPCION
			SOLO PER TESTE	ONLY FOR HEADS 263-34-2DR-22 / 263-34-2WR-22	SEULEMENT POUR TETES		
●	929746-3-00	1	piedino completo	presserfoot assembly	pied-presseur complet		
1	741721-2-00	1	vite	screw	vis		
2	741414-2-00	1	vite	screw	vis		
3	300119-0-11	1	molla	spring	ressort		
4	721411-2-00	1	vite	screw	vis		
5	302821-0-10	1	molla	spring	ressort		
6	743134-2-00	1	vite	screw	vis		
7	300118-0-10	1	spina	pin	goupille		
8	301598-0-11	1	dado	nut	écrou		
9	301596-0-11	1	vite	screw	vis		
10	303052-0-00	1	molla	spring	ressort		
11	300120-0-10	1	spina	pin	goupille		
12	741413-2-00	1	vite	screw	vis		
13	302773-0-11	1	guida	guide	guide		
14	929733-0-00	1	placca ago calibro 3	needle plate 3 gauge	plaque à aiguille cal. 3		
15	929749-0-00	1	griffa principale passo 1,5	main feed dog - 1,5	griffe principale - 1,5		
16	929739-0-00	1	griffa differenziale passo 1,5	differential feed dog - 1,5	griffe différentielle - 1,5		
17	929752-2-00	1	piastra porta placca	plate	plaque		
18	744922-2-00	1	vite	screw	vis		
			SOLO A RICHIESTA PER TESTA	ONLY ON REQUEST FOR HEAD 263-34-2DR-22	SEULEMENT SUR DEMANDE POUR TETE		
■	929747-3-00	1	piedino completo	presser foot assembly	pied-presseur complet		
19	741721-2-00	1	vite	screw	vis		
20	741414-2-00	1	vite	screw	vis		
21	300119-0-11	1	molla	spring	ressort		
22	721411-2-00	1	vite	screw	vis		
23	302872-0-10	1	molla	spring	ressort		
24	302870-0-10	1	vite	screw	vis		
25	302883-0-00	1	guida pizzo	lace guide	guide dentelle		
26	741413-2-00	2	vite	screw	vis		
27	300118-0-10	1	spina	pin	goupille		
28	301598-0-11	1	dado	nut	écrou		
29	301596-0-11	1	vite	screw	vis		
30	303052-0-00	1	molla	spring	ressort		
31	300120-0-10	1	spina	pin	goupille		
32	302871-0-00	1	guida pizzo	lace guide	guide dentelle		
33	302876-0-10	1	guida elastico	elastic guide	guide élastique		

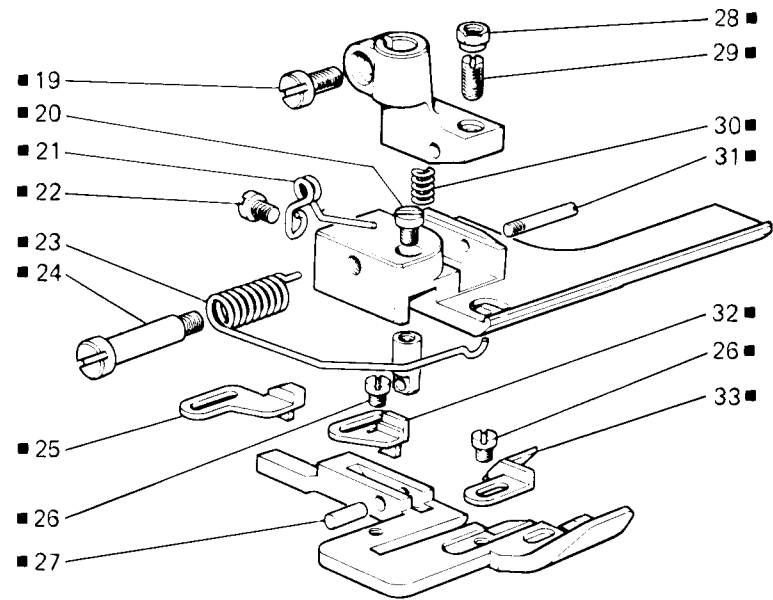
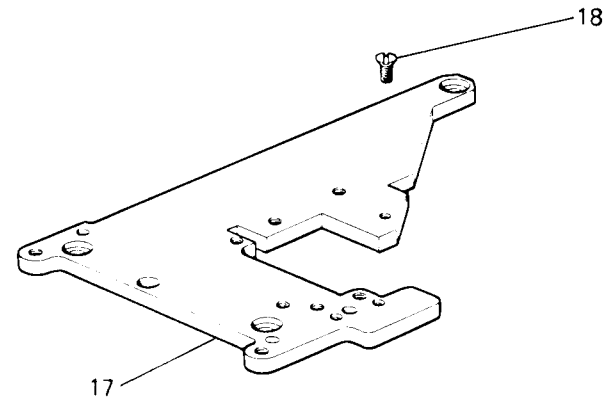
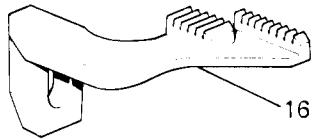
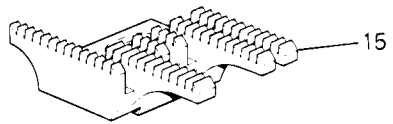
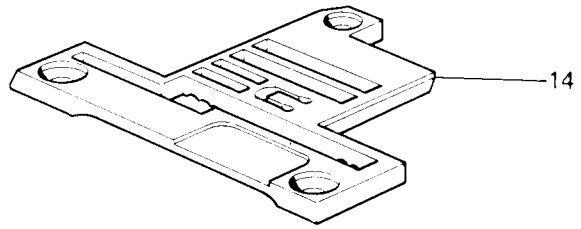
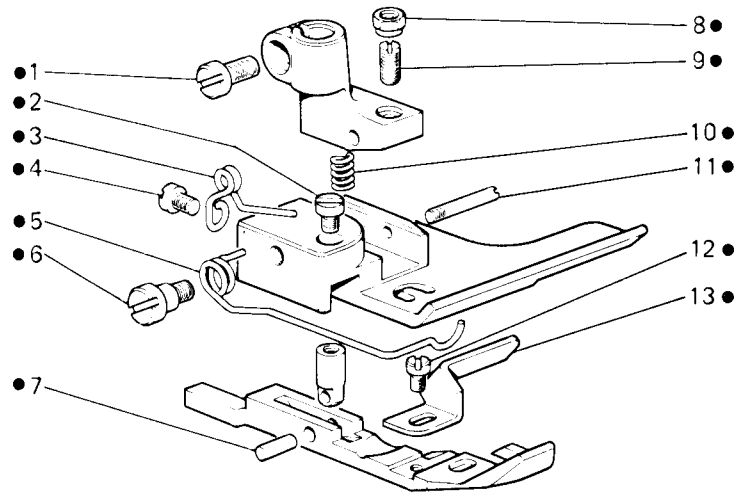


Fig. N. Abb. N.	Part. N. Bestell N. Piece N. Pieza N.	Qt. Anzahl	DESCRIZIONE	DESCRIPTION	DESCRIPTION	BENENNUNG	DESCRIPCION
			SOLO PER TESTE	ONLY FOR HEADS	SEULEMENT POUR TETES		
				263-34-2DR-20 / 263-34-2WR-20			
●	929746-3-00	1	pedino completo	presserfoot assembly	ped-presseur complet		
1	741721-2-00	1	vite	screw	vis		
2	741414-2-00	1	vite	screw	vis		
3	300119-0-11	1	molla	spring	ressort		
4	721411-2-00	1	vite	screw	vis		
5	302821-0-10	1	molla	spring	ressort		
6	743134-2-00	1	vite	screw	vis		
7	300118-0-10	1	spina	pin	goupille		
8	301598-0-11	1	dado	nut	écrou		
9	301596-0-11	1	vite	screw	vis		
10	303052-0-00	1	molla	spring	ressort		
11	300120-0-10	1	spina	pin	goupille		
12	741413-2-00	1	vite	screw	vis		
13	302773-0-11	1	guida	guide	guide		
14	929748-0-00	1	placca ago calibro 3,5	needle plate 3,5 gauge	plaque à aiguille cal. 3,5		
15	929749-0-00	1	griffa principale passo 1,5	main feed dog - 1,5	griffe principale - 1,5		
16	929739-0-00	1	griffa differenziale passo 1,5	differential feed dog - 1,5	griffe différentielle - 1,5		
17	929752-2-00	1	piastra porta placca	plate	plaque		
18	744922-2-00	1	vite	screw	vis		
			SOLO A RICHIESTA	ONLY ON REQUEST	SEULEMENT SUR DEMANDE		
■	929747-3-00	1	pedino completo	presser foot assembly	ped-presseur complet		
19	741721-2-00	1	vite	screw	vis		
20	741414-2-00	1	vite	screw	vis		
21	300119-0-11	1	molla	spring	ressort		
22	721411-2-00	1	vite	screw	vis		
23	302872-0-10	1	molla	spring	ressort		
24	302870-0-10	1	vite	screw	vis		
25	302883-0-00	1	guida pizzo	lace guide	guide dentelle		
26	741413-2-00	2	vite	screw	vis		
27	300118-0-10	1	spina	pin	goupille		
28	301598-0-11	1	dado	nut	écrou		
29	301596-0-11	1	vite	screw	vis		
30	303052-0-00	1	molla	spring	ressort		
31	300120-0-10	1	spina	pin	goupille		
32	302871-0-00	1	guida pizzo	lace guide	guide dentelle		
33	302876-0-10	1	guida elastico	elastic guide	guide élastique		

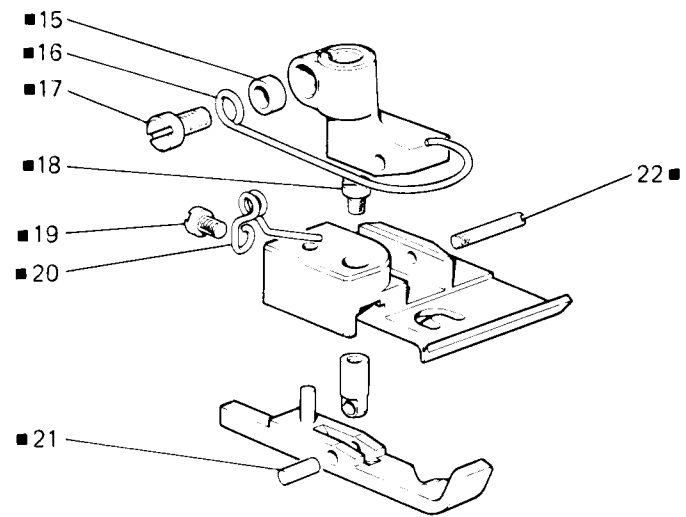
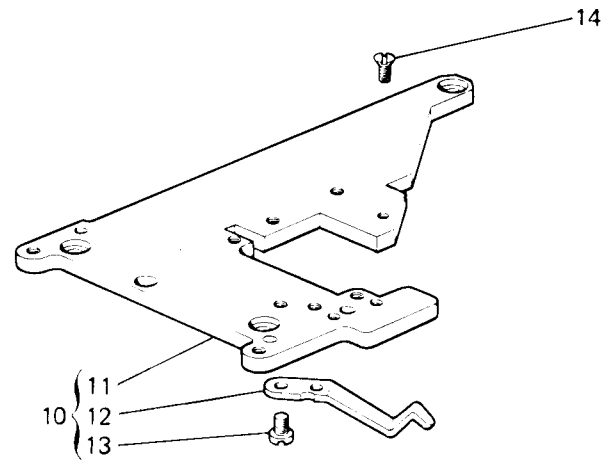
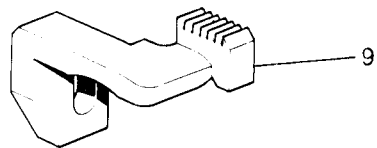
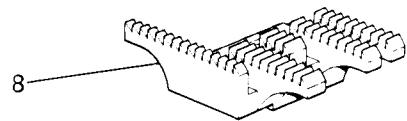
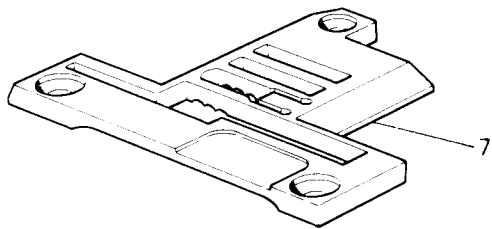
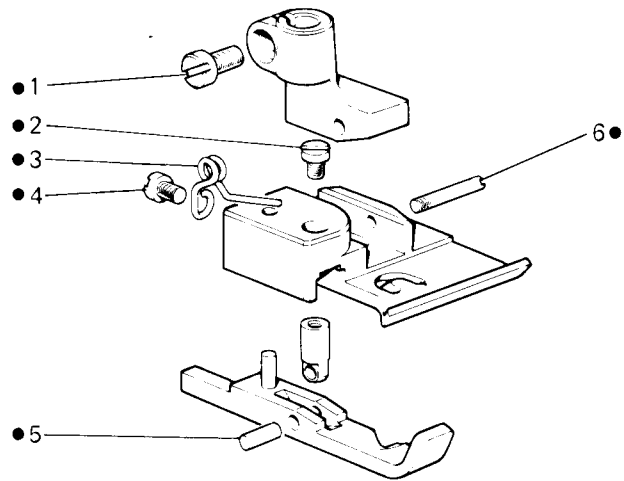


Fig. N. Abb. N.	Part. N. Bestell N. Piece N. Pieza N.	Qt. Anzahl	DESCRIZIONE	DESCRIPTION	DESCRIPTION	BENENNUNG	DESCRIPCION
			SOLO PER TESTE	ONLY FOR HEADS	SEULEMENT POUR TETES		
				261-16-2MD-04 / 263-16-2MD-01			
●	929744-3-00	1	pedino completo	presser foot assembly	pied-presseur complet		
1	741721-2-00	1	vite	screw	vis		
2	741414-2-00	1	vite	screw	vis		
3	300119-0-11	1	molla	spring	ressort		
4	721411-2-00	1	vite	screw	vis		
5	300118-0-10	1	spina	pin	goupille		
6	300120-0-10	1	spina	pin	goupille		
7	929741-0-00	1	placca ago calibro 3,5	needle plate 3,5 gauge	plaque a aiguille cal. 3,5		
8	929742-0-00	1	griffa principale passo 1,5	main feed dog - 1,5	griffe principale - 1,5		
9	929743-0-00	1	griffa differenziale passo 1,5	differential feed dog - 1,5	griffe différentielle - 1,5		
10	929753-4-00	1	piastra completa	plate assembly	plaque complète		
11	929752-2-00	1	piastra	plaque	plaque		
12	300277-0-10	1	molla	spring	ressort		
13	721424-2-00	2	vite	screw	vis		
14	744922-2-00	1	vite	screw	vis		
			SOLO A RICHIESTA PER TESTA	ONLY ON REQUEST FOR HEAD	SEULEMENT SUR DEMANDE POUR TETE		
				261-16-2MD-04			
■	924734-3-00	1	pedino completo	presser foot assembly	pied-presseur complet		
15	303504-0-10	1	distanziale	spacer	entretoise		
16	990808-0-01	1	salvadita	protection	protection		
17	741751-2-00	1	vite	screw	vis		
18	741414-2-00	1	vite	screw	vis		
19	721411-2-00	1	vite	screw	vis		
20	300119-0-11	1	molla	spring	ressort		
21	300118-0-10	1	spina	pin	goupille		
22	300120-0-10	1	spina	pin	goupille		

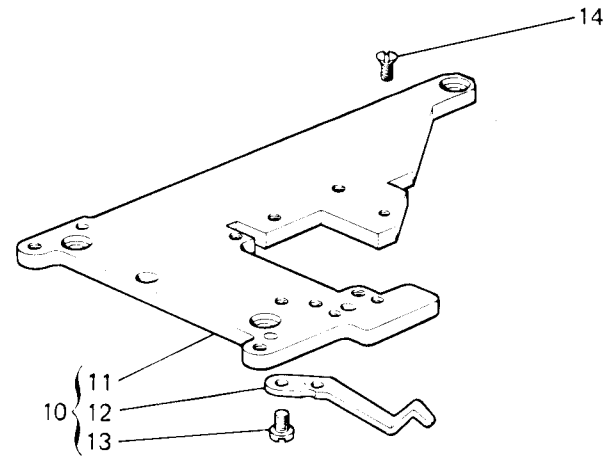
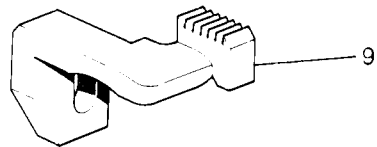
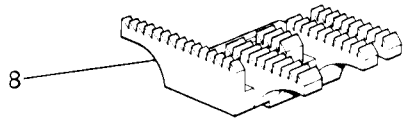
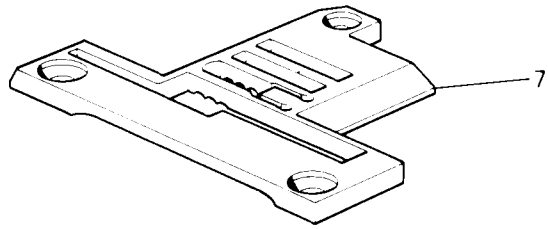
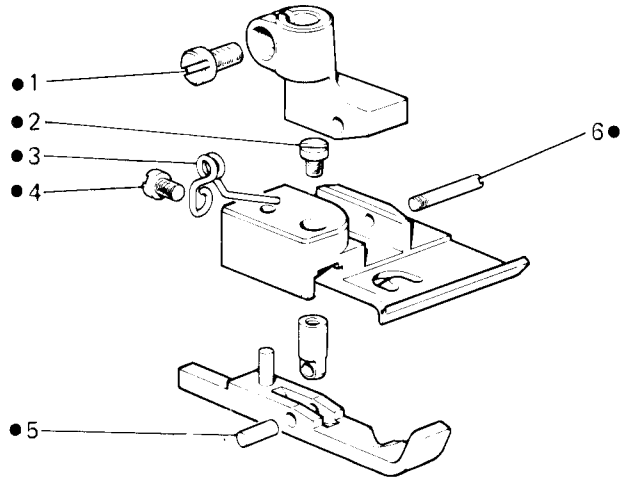


Fig. N. Abb. N.	Part. N. Bestell N. Piece N. Pieza N.	Qt. Anzahl	DESCRIZIONE	DESCRIPTION	DESCRIPTION	BENENNUNG	DESCRIPCION
			SOLO PER TESTA	ONLY FOR HEAD	SEULEMENT POUR TETE		
●	929740-3-00	1	1	263-16-2MD-10			
1	741721-2-00	1	1	presser foot assembly	1	1	1
2	741414-2-00	1	1	screw	1	1	1
3	300119-0-11	1	1	screw	1	1	1
4	721411-2-00	1	1	spring	1	1	1
5	300118-0-10	1	1	screw	1	1	1
6	300120-0-10	1	1	pin	1	1	1
7	929745-0-00	1	1	pin	1	1	1
8	929742-0-00	1	1	needle plate 4,5 gauge	1	1	1
9	929743-0-00	1	1	main feed dog - 1,5	1	1	1
10	929753-4-00	1	1	differential feed dog - 1,5	1	1	1
11	929752-2-00	1	1	plate assembly	1	1	1
12	300277-0-10	1	1	plate	1	1	1
13	721424-2-00	2	2	spring	2	2	2
14	744922-2-00	1	1	screw	1	1	1