

527-00-1CD-35

EDIZIONE · EDITION 5/83

n. 268

ISTRUZIONI PER LA CONSULTAZIONE DEL CATALOGO

Tutti i particolari delle teste sono rappresentati in più tavole come indicato nell'indice.

Quando i particolari rappresentati in una tavola sono comuni a tutte le teste riportate nel catalogo, sulla tavola e nell'indice non sono indicati i simboli delle teste poiché sono gli stessi riportati sulla copertina.

Eventuali varianti sono rappresentate in un riquadro sulla medesima tavola, con l'indicazione delle teste a cui si riferiscono.

Quando i particolari rappresentati in una tavola non sono comuni a tutte le teste riportate nel catalogo, la tavola viene ripetuta più volte con lo stesso numero seguito da una lettera.

Sulla tavola e nell'indice (di fianco alla descrizione della tavola) sono indicate le teste interessate. Eventuali varianti sono rappresentate in un riquadro sulla medesima tavola, con l'indicazione delle teste a cui si riferiscono.

- 1) tutti i particolari non fornibili scolti non vengono richiamati singolarmente ma soltanto illustrati nel gruppo d'appartenenza.
- 2) I numeri riguardanti le figure dei particolari che compongono il gruppo sono di norma raggruppati in una parentesi. In alcuni casi però, dove non è possibile il raggruppamento, i numeri sono affiancati dallo stesso segno particolare (es. ★▲●■ ecc.) con cui è indicato l'intero gruppo.

I particolari a richiesta sono rappresentati nelle ultime tavole contrassegnate con la voce "A RICHIESTA".

Le teste su cui tali particolari possono essere montati sono indicate nelle descrizioni della tavola.

Per facilitare la ricerca viene riportato l'elenco di tutti i particolari illustrati sul Catalogo Base, con la relativa tavola in cui gli stessi sono richiamati.

AGHI

Gli aghi sono contraddistinti dal sistema e dalla finezza.

Il sistema dell'ago e la finezza sono marcati oltre che sulla busta, anche sull'ago stesso. Nelle ordinazioni precisare, oltre al simbolo, il sistema e la finezza degli aghi desiderati. In caso di dubbio allegare un ago campione o una bustina vuota.

IMPORTANTE

Nella richiesta di parti di ricambio citare sempre il relativo numero della testa, il numero della tavola e il simbolo del particolare con relativa descrizione usata sul catalogo.

INSTRUCTIONS TO CONSULT THE CATALOGUE

All the spare parts are illustrated in several table as indicated in the index.

When the parts illustrated in one table are common to all the heads listed in the catalogue, the symbols of the heads, have not been indicated on the table and in the index because they are listed on the cover.

Eventual variations are illustrated in a square on the same table, with the indication of the heads to whom it refers.

When the parts illustrated in one table are not common to all the heads listed in the catalogue, the table is reproduced several times with the same reference number followed by a letter.

The heads concerned have been indicated on the table and in the index (by the side of the description of the table).

Eventual variations are illustrated in a square on the same table, with the indication of the heads to whom it refers.

- 1) all parts which cannot be supplied by themselves are not indicated alone, but shown together with the group to which they belong.
- 2) The references of the pictures of the parts making up the group are usually put in brackets. In some cases, however, when their grouping is not possible, the numbers of the various parts in the tables are marked with the same particular sign (for ex ★▲●■ etc.) with which the whole group is indicated.

The parts on request are illustrated on the list tables with the indication "ON REQUEST".

The heads on which those parts can be fitted are indicated in the description of the table.

NEEDLES

The needles are marked with system and size.

The system and size of the needle are shown on the packet as well as on the needle itself. When ordering please state symbol, system and size. If you have doubts, enclose a sample needle or an empty packet with your order.

ATTENTION

When ordering spare parts always state the serial number of the machine, the symbol of the part in question and the description given in the catalogue.

INSTRUCTIONS POUR LA CONSULTATION DU CATALOGUE

Toutes les pièces des têtes sont représentées en plusieurs tables comme nous avons indiqué dans l'index.

Quand les pièces représentées dans une table sont communes à toutes les têtes mentionnées dans le catalogue, sur la table et dans l'index ne sont pas indiqués les symboles des têtes car ce sont les mêmes imprimés sur la couverture.

Les modifications éventuelles sont indiquées dans un panneau sur la table même avec l'indication des têtes auxquelles elles se réfèrent.

Quand les pièces représentées dans une table ne sont pas communes à toutes les têtes mentionnées dans le catalogue, la table est publiée plusieurs fois avec les mêmes chiffres suivis d'une lettre. Sur la table et dans l'index (à côté de la description de la table) sont indiquées les têtes intéressées. Les modifications éventuelles sont indiquées dans un panneau sur la table même avec l'indication des têtes auxquelles elles se réfèrent.

- 1) toutes les pièces qui ne sont pas fournies séparément mais qui font partie d'un groupe, ne sont pas indiquées séparément.
- 2) Les symboles des pièces qui forment un groupe sont regroupés entre parenthèses. Cependant, lorsque ceci n'a pas été possible, les symboles, qui dans les tables d'illustration correspondent aux pièces, sont suivis du même signe particulier (ex. ★▲●■ etc.) qui indique le groupe tout entier.

Les pièces sur demande sont représentées dans les dernières tables marquées avec la mention "SUR DEMANDE".

Pour faciliter la recherche, le catalogue renferme l'index numérique de toutes les pièces illustrées avec indication de la table dans laquelle elles sont indiquées.

AIGUILLES

Les aiguilles se différencient par le système et la grosseur.

Le système de l'aiguille et sa grosseur, sont indiqués non seulement sur le sachet mais également sur l'aiguille. Dans l'ordre préciser, en plus du symbole, le système et la grosseur des aiguilles désirés. En cas de doute, joindre une aiguille comme modèle ou un sachet vide.

ATTENTION

En cas d'ordre de pièces détachées indiquer toujours le numéro de la machine, le symbole de la pièce et la dénomination officielle mentionnée sur le catalogue.

INDICE NUMERICO INDEX

Part. N.	Tav. N.	Part. N.	Tav. N.	Part. N.	Tav. N.	Part. N.	Tav. N.	Part. N.	Tav. N.	Part. N.	Tav. N.	Part. N.	Tav. N.
100195-0-11	11	202473-0-11	5	206559-0-01	14	206658-2-02	6	207060-0-00	5	207927-0-01	7	208019-0-00	13
100305-0-10	3	202475-0-10	5-11	206560-0-20	14	206660-2-02	6	207069-0-01	2	207930-0-01	7	208031-2-00	2
100534-0-10	3	202478-0-10	5	206564-0-00	14	206662-0-00	14	207071-0-00	2	207932-0-10	7	208038-4-00	6
100620-2-10	5	202480-0-10	1	206565-0-01	14	206665-2-00	14	207095-2-00	6	207942-3-00	5	208060-4-00	2
200490-0-00	5	202484-0-10	2	206566-0-00	14	206667-0-00	14	207096-2-00	6	207943-2-00	5	208080-2-00	2
200622-0-10	9	202488-0-10	5	206567-0-01	14	206680-0-01	4	207407-0-02	8	207944-0-00	5	208087-3-00	14
201128-0-10	6	202489-0-10	5	206568-0-01	14	206682-0-01	4	207421-0-01	9	207945-0-00	5	208090-0-00	3
201358-0-10	5	202490-0-10	5	206569-0-01	14	206683-0-00	4	207510-4-00	15	207946-0-01	5	208091-0-00	3
201610-0-01	5	202529-0-10	8	206574-2-00	9	206684-0-00	4	207520-2-00	15	207947-0-00	5	208097-4-00	5
202026-0-10	1	202556-0-00	3	206578-2-00	9	206685-0-00	2	207540-0-00	15	207948-0-00	5	208133-2-00	8
202027-0-10	1	202558-2-00	3	206580-2-00	5	206686-0-00	6	207574-0-00	7	207950-4-00	5	208135-4-01	8
202032-0-11	5	202720-0-00	6	206583-0-00	5	206687-2-00	2	207588-0-00	9	207951-4-00	1	208140-4-11	7
202033-0-10	5	202875-0-10	11	206584-2-00	5	206688-0-00	2	207589-0-00	9	207952-2-00	1	208142-3-01	7
202062-2-10	6	203378-0-11	15	206586-0-01	5	206689-0-01	4	207600-0-00	3	207953-0-00	1	208144-0-00	13
202063-0-10	5	204122-0-10	4	206587-0-01	5	206690-2-00	2	207602-0-00	3	207954-0-00	1	208148-4-00	13
202065-0-20	6	204369-0-00	15	206588-0-00	5	206692-0-00	4	207625-0-00	8	207958-0-00	1	208161-4-01	7
202071-2-20	6	204947-0-10	8	206592-3-00	5	206693-0-00	4	207626-0-00	8	207959-0-00	8	208163-4-01	7
202086-0-11	6	205021-0-10	8	206593-0-00	5	206695-0-00	6	207692-2-00	7	207960-0-00	8	208164-0-00	2
202095-0-11	15	206296-0-00	1	206594-0-00	5	206697-4-01	4	207711-2-10	5	207961-0-00	2	208165-0-00	1
202128-0-10	9	206402-4-00	6	206595-0-00	5	206699-0-02	4	207719-0-00	5	207962-0-00	8	208184-2-00	3
202129-0-10	9	206412-3-00	6	206598-3-00	5	206705-4-01	4	207724-2-00	5	207965-0-00	8	208207-0-00	13
202130-0-11	9	206418-4-00	6	206599-0-01	5	206708-0-00	4	207758-0-01	1	207967-0-00	8	208208-0-00	13
202134-0-11	9	206452-4-00	6	206602-0-00	5	206711-0-00	3	207856-0-00	2	207968-0-00	3	208209-0-00	13
202154-0-12	11	206454-4-01	6	206603-0-10	5-7	206715-0-01	11	207858-0-00	2	207969-0-00	13	208219-3-00	13
202165-0-10	15	206508-0-00	4	206605-0-01	5	206734-2-00	2	207861-4-00	9	207970-2-01	14	208337-0-00	3
202184-0-11	15	206521-0-00	7	206606-2-00	5-7	206740-0-00	3	207876-2-00	8	207971-0-00	14	300217-0-10	3
202201-0-11	15	206533-0-00	7	206613-0-00	5	206748-0-00	1	207878-3-00	8	207972-4-01	14	300331-0-10	3
202214-0-11	2-8	206538-0-00	7	206615-4-00	5	206754-0-00	3	207879-0-00	8	207973-0-00	14	301586-0-10	8-14
202227-0-10	3	206539-0-01	9	206617-0-00	5	206756-0-01	2	207880-0-00	8	207975-0-00	14	301608-0-00	2
202229-0-10	3	206540-2-10	7	206619-0-00	5	206757-0-00	9	207881-2-00	8	207976-0-00	13	307605-0-00	12
202267-2-13	3	206543-0-01	4	206620-0-00	8	206758-0-00	9	207882-2-00	8	207977-0-00	14	308507-0-00	3
202292-0-10	5	206544-0-00	4	206621-0-00	8	206764-0-00	2	207887-4-00	8	207978-0-00	14	309562-0-00	7
202345-2-31	5	206545-0-00	14	206622-0-00	8	206767-0-00	2	207893-0-00	3	207979-0-00	14	309621-0-00	11
202350-0-10	5	206546-0-00	5	206635-0-00	8	206768-0-00	2	207895-0-00	3	207990-0-00	7	310167-0-00	7
202352-2-11	4	206549-2-00	7	206637-0-00	8	206769-0-10	2	207901-0-01	14	207991-0-00	7	700207-0-00	5
202371-0-10	8	206550-4-03	14	206642-0-00	8	206808-0-01	8	207909-0-00	14	207992-0-00	15	700630-0-00	4
202385-0-10	5	206554-0-02	14	206643-0-01	6	206810-2-00	8	207916-0-00	3	207995-0-00	15	701000-0-00	12
202386-0-10	4	206555-0-01	14	206645-4-01	6	206872-0-00	5	207917-0-00	14	207998-2-00	7	701002-0-00	14
202391-0-11	8	206556-0-01	4	206651-0-00	6	206974-0-00	4	207918-0-00	3	207999-0-00	7	701004-0-00	5-14
202408-0-10	5	296557-0-00	14	206653-2-01	6	207000-2-00	15	207919-0-00	3	208012-4-01	14	701005-0-00	11-14
202412-0-11	5	206558-0-01	14	206654-2-10	6	207016-2-00	15	207922-3-10	7	208014-0-00	6	701007-0-00	5

INDICE NUMERICO INDEX

Part. N.	Tav. N.	Part. N.	Tav. N.	Part. N.	Tav. N.	Part. N.	Tav. N.	Part. N.	Tav. N.	Part. N.	Tav. N.	Part. N.	Tav. N.
701009-0-00	11	706242-0-00	11	729062-2-00	12	744533-0-00	9	778842-0-00	13	925216-0-00	12	945110-0-00	15
701031-0-00	14	706412-0-00	11	730011-2-00	5	744631-2-00	3-12	780200-0-40	15	925217-0-00	12	945111-0-00	15
701051-0-00	14	720411-2-00	14	730023-2-00	2	744634-2-00	2	788001-0-01	3	925761-0-01	12	990176-0-10	16
701104-0-00	11	720431-2-00	8	733008-2-00	17	744742-0-00	1	900201-0-10	17	926273-0-00	8	990183-0-13	16
701106-0-00	14	721412-2-00	8	733503-0-00	3	745002-0-00	6-7	900203-0-10	17	926669-4-01	11	990325-0-10	16
701113-0-00	6	721424-2-00	1	733505-2-00	8	745114-0-00	7-8	900204-0-10	17	926758-0-00	10	990335-0-10	14
701116-0-00	4	721434-2-00	8	733507-0-00	14	745168-0-00	6	900694-0-11	17	927655-0-00	8	990474-0-11	16
701133-0-00	4	721435-2-00	2	733806-2-00	11	745800-2-00	2-3-6-13	901101-0-00	11	930601-0-00	3	990639-0-10	16
701151-0-00	14	721473-2-00	11	740041-2-00	13	745810-2-00	6-15	901102-0-00	17	942010-4-00	11	990685-0-10	16
702415-0-00	1	721484-2-00	3-14	740053-2-00	5	745812-0-00	7	920536-4-00	3	942011-0-00	11	990723-0-00	16
703004-0-00	11	721494-2-00	14	741405-0-00	7	745812-2-00	5-6-8	920537-0-00	3	942012-0-00	11	990934-0-00	16
703007-0-00	4-11	721525-0-00	4	741413-0-00	5	745815-2-00	5	920577-0-00	3	942013-0-00	11	990981-0-00	17
704104-2-00	12	721883-0-00	6	741415-0-00	6	746007-2-00	2-8-12-14	920710-4-00	3	942014-0-00	11	990982-0-00	17
704213-2-00	9	722031-2-00	1	741415-2-00	15	746008-0-00	5	920711-4-00	3	942015-0-00	11	990987-4-00	17
704226-2-00	12	722063-2-00	2-4-5-8-14	741431-2-00	15	746020-2-00	8	920716-0-00	3	942016-0-00	11	991120-5-01	18
704308-4-00	5	722070-2-00	11	741495-2-00	11	746021-2-00	10	920717-0-00	3	942017-0-00	11	991187-0-01	17
704314-2-00	5-10	722073-2-00	13	741535-0-00	14	746208-2-00	2	920718-0-00	3	942022-0-00	5	991284-0-00	16
704345-2-00	17	722080-2-00	11	741546-2-00	5	746406-2-00	3	920719-0-00	3	942023-0-00	9	991400-4-02	16
704346-2-00	17	722082-2-00	11	741552-0-00	7	748086-2-00	14	920720-0-00	3	944376-0-00	11	991415-0-00	16
704406-0-00	9	722123-2-00	8	741558-0-00	3	765200-6-90	7	970721-0-00	3	944390-2-10	11		
704409-0-00	9	722153-2-00	11	741634-2-00	13	778202-0-00	6	920846-0-00	3	944391-0-01	11		
704409-2-00	10	722400-2-00	11	741657-0-00	3	778204-0-00	7-8	921350-0-10	15	944392-0-00	11		
704428-2-00	1	722411-2-00	11	741665-2-00	15	778206-0-00	15	922453-4-00	12	944394-0-10	11		
704808-0-00	5	722471-2-00	9	741675-2-00	12	778208-0-00	7	922454-0-00	12	944395-2-00	11		
704813-0-00	3-14	722480-2-00	7	741724-0-00	2	778236-0-00	6	922455-0-00	12	944396-0-00	11		
704829-0-00	5	722511-2-00	14	741745-2-00	5	778237-0-00	13	922463-0-00	12	944397-0-01	11		
704841-0-00	5	722905-2-00	17	741931-0-00	10	778241-0-00	1	922464-0-00	12	944399-0-01	11		
704845-0-00	6	724032-0-00	5-7	741956-2-00	3-4	778401-0-00	6	923918-0-01	10	944406-2-00	10		
704848-0-00	6	724895-2-00	5	741974-2-00	10	778403-0-00	6	923919-0-01	10	944407-2-00	10		
705008-0-00	5	727014-2-00	7	742457-2-00	9	778405-0-00	6	923942-0-00	10	944408-0-10	11		
705029-0-00	7	727021-0-00	15	742623-2-00	12	778410-0-00	6	923943-0-00	10-11	944409-4-00	10		
705030-0-00	9	727096-0-00	8	742758-0-00	9	778414-0-00	7	923985-0-00	10	944410-2-00	10		
705208-0-00	5	727884-0-00	5	742838-2-00	2	778417-0-00	2-5-7	923994-0-00	10	944411-4-00	10		
705230-0-00	5	729011-2-00	11	743238-2-00	3	778419-0-00	7	923997-0-00	1	944412-4-10	11		
705408-0-00	5	729012-2-00	7-12	743243-2-00	6	778503-0-00	7	923998-2-01	1-11	944422-0-00	11		
705970-0-00	14	729013-2-00	13	743469-2-00	9	778511-0-00	7	924045-0-00	11	944424-0-00	8		
705975-0-00	1	729022-2-00	14	743482-2-00	12	778522-0-00	8	924457-0-00	11	944451-0-01	15		
705977-0-00	14	729031-2-00	3	744332-2-00	5-8	778832-0-00	2	924745-0-20	11	944465-0-00	11		
705982-0-00	1	729032-2-00	5	744334-2-00	5-7-9	778833-0-00	2	924797-0-10	11	944466-0-00	11		
706043-0-00	4	729034-2-00	7	744512-4-00	5	778835-0-00	9	925207-4-00	12	944467-0-00	11		
706222-0-00	11	729051-2-00	5-7-8	744530-0-00	10	778837-0-00	7-13	925213-4-00	12	944948-3-00	15		

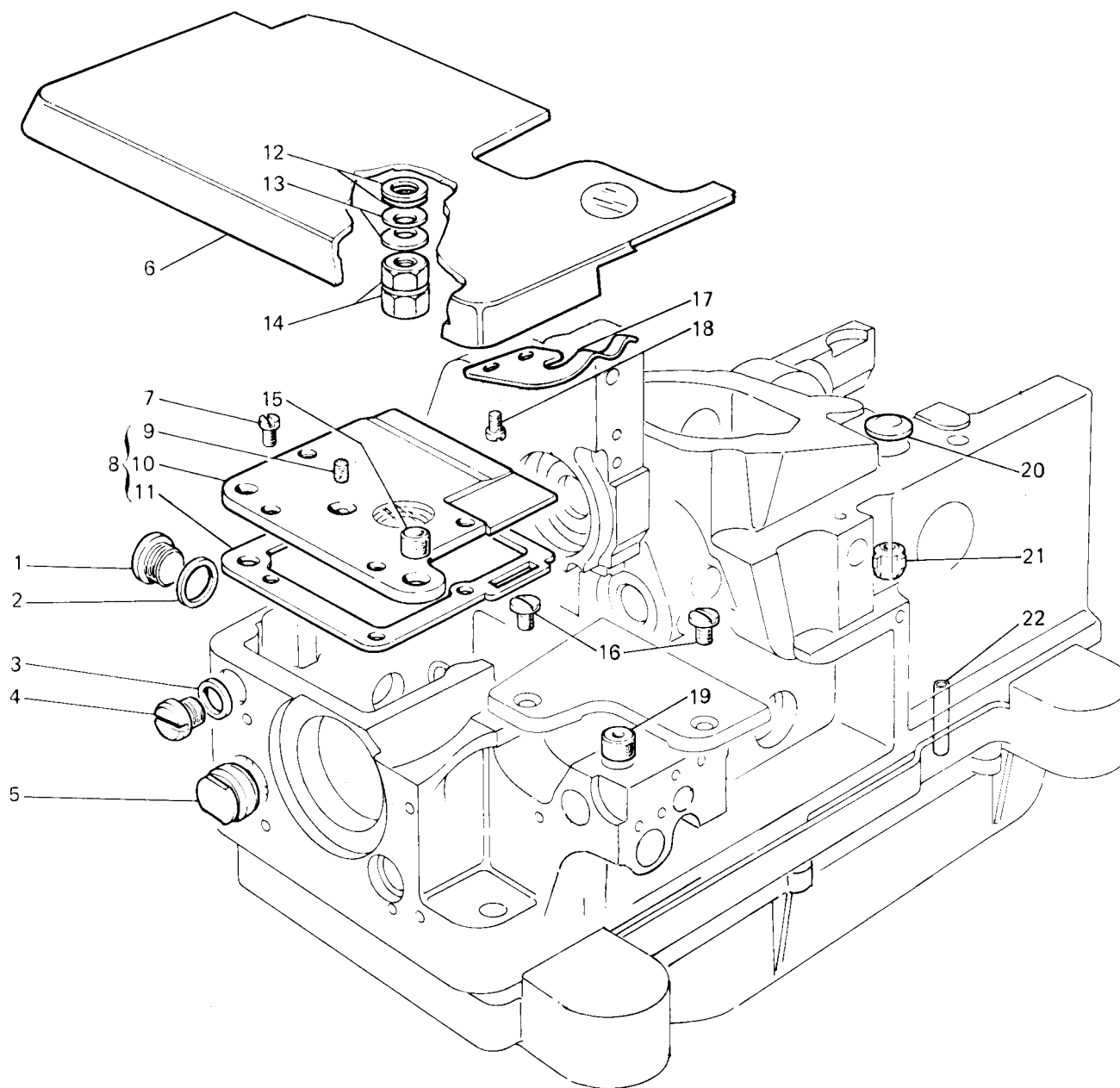


Fig. N. Abb. N.	Part. N. Bestell N. Pieca N. Pieza N.	Qt. Anzahl	DESCRIZIONE	DESCRIPTION	DESCRIPTION	BENENNUNG	DESCRIPCION
1	202026-0-10	1	tappo	plug	bouchon		
2	705982-0-00	1	guarnizione	gasket	garniture		
3	705975-0-00	1	guarnizione	gasket	garniture		
4	202480-0-10	1	tappo	plug	bouchon		
5	202027-0-10	1	tappo	plug	bouchon		
6	923998-2-01	1	piano di lavoro	working plate	plan de travail		
7	722031-2-00	4	vite	screw	vis		
8	207951-4-00	1	coperchio completo	cover assembly	couvercle complet		
9	778241-0-00	1	stoppino	wick	mèche		
10	207952-2-00	1	coperchio	cover	couvercle		
11	207953-0-00	1	guarnizione	gasket	garniture		
12	704428-2-00	2	rondella	washer	rondelle		
13	702415-0-00	2	molla a tazza	cup spring	ressort à tasse		
14	208165-0-00	2	dado	nut	écrou		
15	207954-0-00	1	tappo	plug	bouchon		
16	744742-0-00	2	vite fissa placca ago	screw	vis		
17	923997-0-00	1	molla	spring	ressor		
18	721424-2-00	2	vite	screw	vis		
19	207958-0-00	1	tappo	plug	bouchon		
20	206748-0-00	1	tappo espansione	plug	bouchon		
21	207758-0-01	1	bussola guida astina	bush	bague		
22	206296-0-00	1	tubetto scarico olio	pipe	tube		

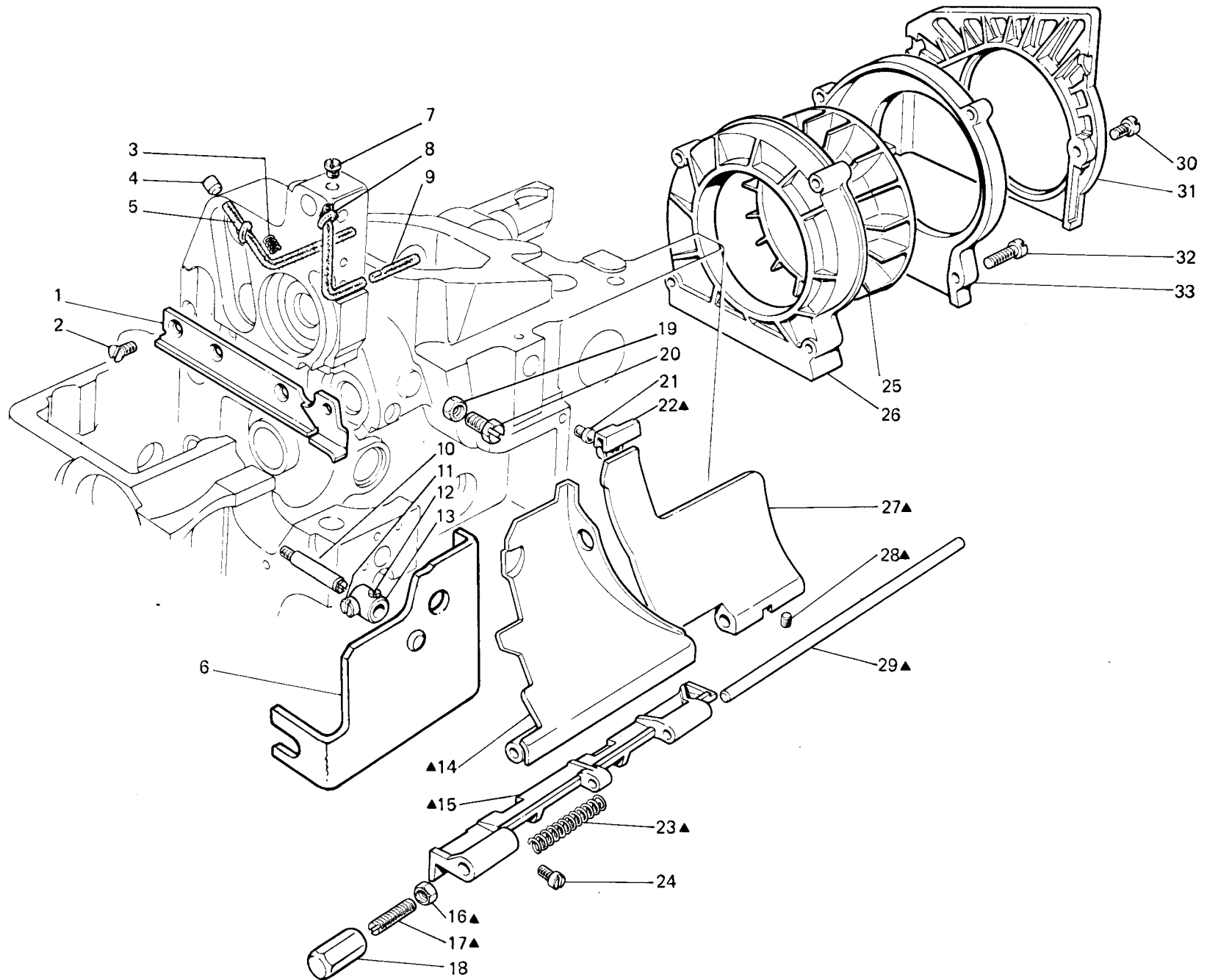


Fig. N. Abb. N.	Part. N. Bestell N. Pieze N. Pieza N.	Qt. Anzahl	DESCRIZIONE	DESCRIPTION	DESCRIPTION	BENENNUNG	DESCRIPCION
▲	208060-4-00	1	sportello anteriore completo	front cover assembly		carter avant complet	
1	207961-0-00	1	carterino	cover		carter	
2	744634-2-00	3	vite	screw		vis	
3	208164-0-00	1	molla	spring		ressort	
4	301608-0-00	1	tappo	plug		bouchon	
5	778832-0-00	1	stoppino	wick		mèche	
6	208031-2-00	1	carter laterale	side cover		carter latéral	
7	742838-2-00	1	vite	screw		vis	
8	778833-0-00	1	stoppino	wick		mèche	
9	778417-0-00	1	stoppino	wick		mèche	
10	207069-0-01	1	vite per carter laterale	screw		vis	
11	721435-2-00	1	vite	screw		vis	
12	730023-2-00	1	vite	screw		vis	
13	206734-2-00	1	morsetto con viti	clamp with screw		collier de serrage avec vis	
14	208080-2-00	1	sportello scorrevole	sliding cover		carter coulissant	
15	206756-0-01	1	cerniera	hinge		charnière	
16	746208-2-00	1	dado	nut		écrou	
17	206769-0-10	1	vite di regolazione	adjustment screw		vis de réglage	
18	207071-0-00	1	cappuccio	cap		capuchon	
19	746007-2-00	1	dado	nut		écrou	
20	202214-0-11	1	vite	screw		vis	
21	207856-0-00	1	gommino	dumper		caoutchouc	
22	206764-0-00	1	zoccolo	block		socle	
23	206768-0-00	1	molla	spring		ressort	
24	741724-0-00	4	vite	screw		vis	
25	206690-2-00	1	ventola di raffreddamento	cooling fan		ventilateur	
26	206688-0-00	1	coclea per ventola	scroll		palier	
27	207858-0-00	1	sportello ribaltabile	tipping cover		carter amovible	
28	745800-2-00	1	vite	screw		vis	
29	206767-0-00	1	perno	pin		pivot	
30	722063-2-00	1	vite per coperchio	screw		vis	
31	206685-0-00	1	coperchio cinghia	cover		couvercle	
32	202484-0-10	4	vite	screw		vis	
33	206687-2-00	1	coperchio coclea	scroll cover		couvercle palier	

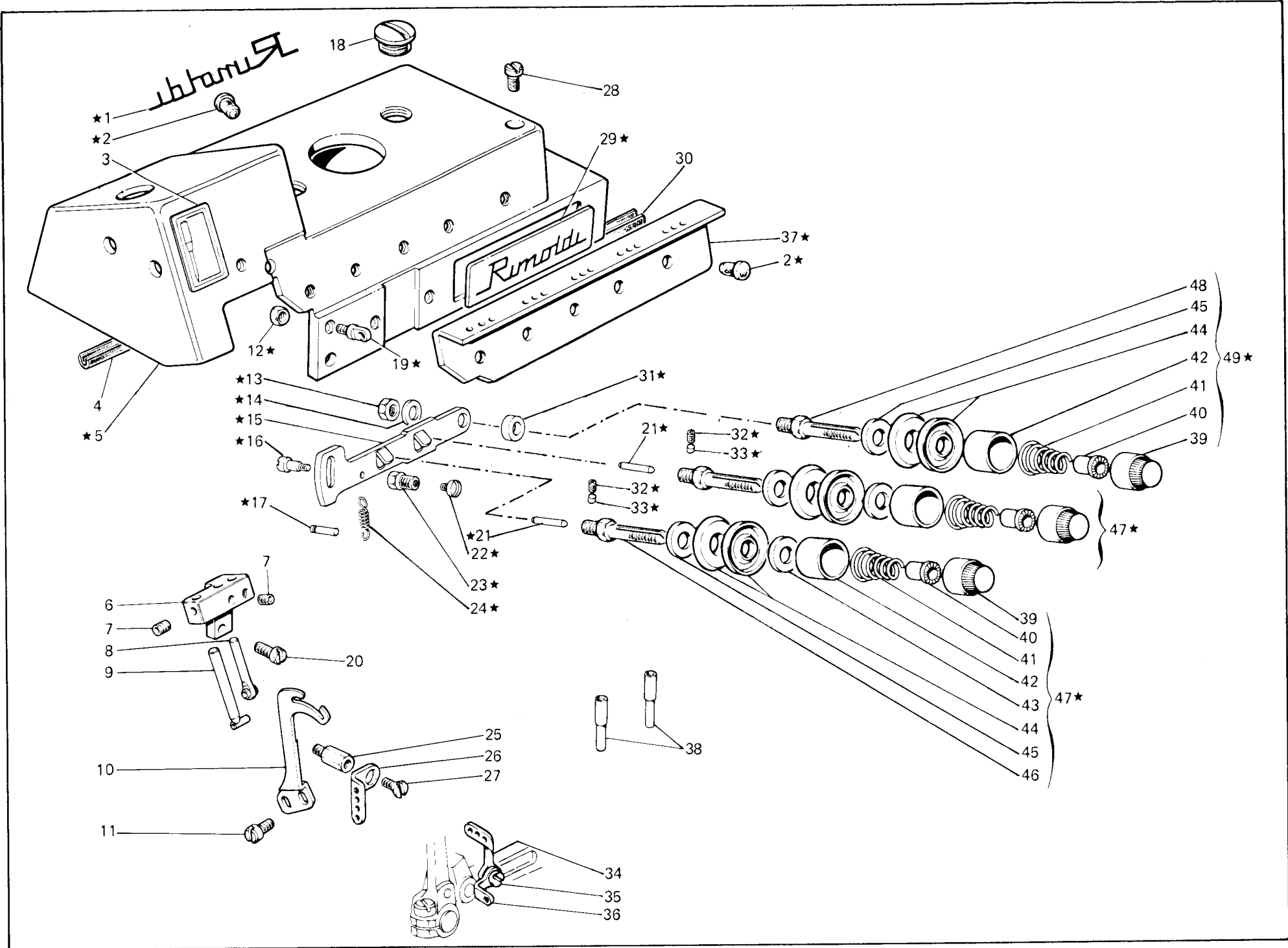


Fig. N. Abb. N.	Part. N. Piece N. Bestell N. Pieza N.	Qt. Anzahl	DESCRIZIONE	DESCRIPTION	DESCRIPTION	BENENNUNG	DESCRIPCION
★	920536-4-00	1	coperchio superiore completo	upper cover assembly		couvercle sup. complet	
1	100305-0-10	1	decalcomania	decal		décalcomanie	
2	207893-0-00	3	tappo	plug		bouchon	
3	788001-0-01	1	decalcomania sist. aghi	needle decal		décalcomanie syst. aiguille	
4	208091-0-00	1	guarnizione	gasket		garniture	
5	920537-0-00	1	coperchio superiore	upper cover		couvercle supérieur	
6	207916-0-00	1	supporto passafili aghi	support		support	
7	745800-2-00	2	vite	screw		vis	
8	208184-2-00	1	passafilo	thread guide		passe-fil	
9	202267-2-13	1	passafilo	thread guide		passe-fil	
10	207895-0-00	1	tendifilo	thread take-up		tendeur du fil	
11	741558-0-00	2	vite	screw		vis	
12	733503-0-00	3	dado	nut		écrou	
13	746406-2-00	1	dado	nut		écrou	
14	704813-0-00	1	rondella	washer		rondelle	
15	208337-0-00	1	leva	lever		levier	
16	743238-2-00	1	vite	screw		vis	
17	930601-0-00	1	spina	pin		goupille	
18	207968-0-00	2	tappo	plug		bouchon	
19	206711-0-00	3	passafilo	thread guide		passe-fil	
20	741956-2-00	2	vite	screw		vis	
21	920719-0-00	2	perno	pin		pivot	
22	920718-0-00	1	vite	screw		vis	
23	920720-0-00	1	perno	pin		pivot	
24	100534-0-10	1	molla	spring		ressort	
25	207602-0-00	1	colonnina	column		colonne	
26	207600-0-00	1	passafilo crochet sup.	thread guide for upper looper		passe-fil crochet sup.	
27	744631-2-00	1	vite	screw		vis	
28	721484-2-00	3	vite fissa coperchio sup.	screw		vis	
29	207918-0-00	1	targhetta	plate		plaque	
30	208090-0-00	1	guarnizione	gasket		garniture	
31	920577-0-00	1	bussola	bush		bague	
32	729031-2-00	2	vite	screw		vis	
33	920721-0-00	2	pastiglia	plug		bouchon	
34	300331-0-10	1	tendifilo crochet sup.	thread take-up		tendeur du fil	
35	741657-0-00	1	vite	screw		vis	
36	920846-0-00	1	tendifilo crochet inf.	thread take-up		tendeur du fil	
37	207919-0-00	1	piastra passafili	plate		plaque	
38	206740-0-00	2	tubetto passafilo	pipe		tube	
39	202558-2-00	3	pomolo	knob		pommeau	
40	202229-0-10	3	bussola	bush		bague	
41	202227-0-10	3	molla	spring		ressort	
42	202556-0-00	3	scodellino	cup		cuvette	
43	308507-0-00	2	rondella	washer		rondelle	
44	300218-0-10	6	disco tensione	tension disc		disque tension	
45	206754-0-00	3	rondella	washer		rondelle	
46	920716-0-00	2	perno	pin		pivot	
47	920710-4-00	2	tensione completa	tension assembly		tension complète	
48	920717-0-00	1	perno	pin		pivot	
49	920711-4-00	1	tensione completa	tension assembly		tension complète	

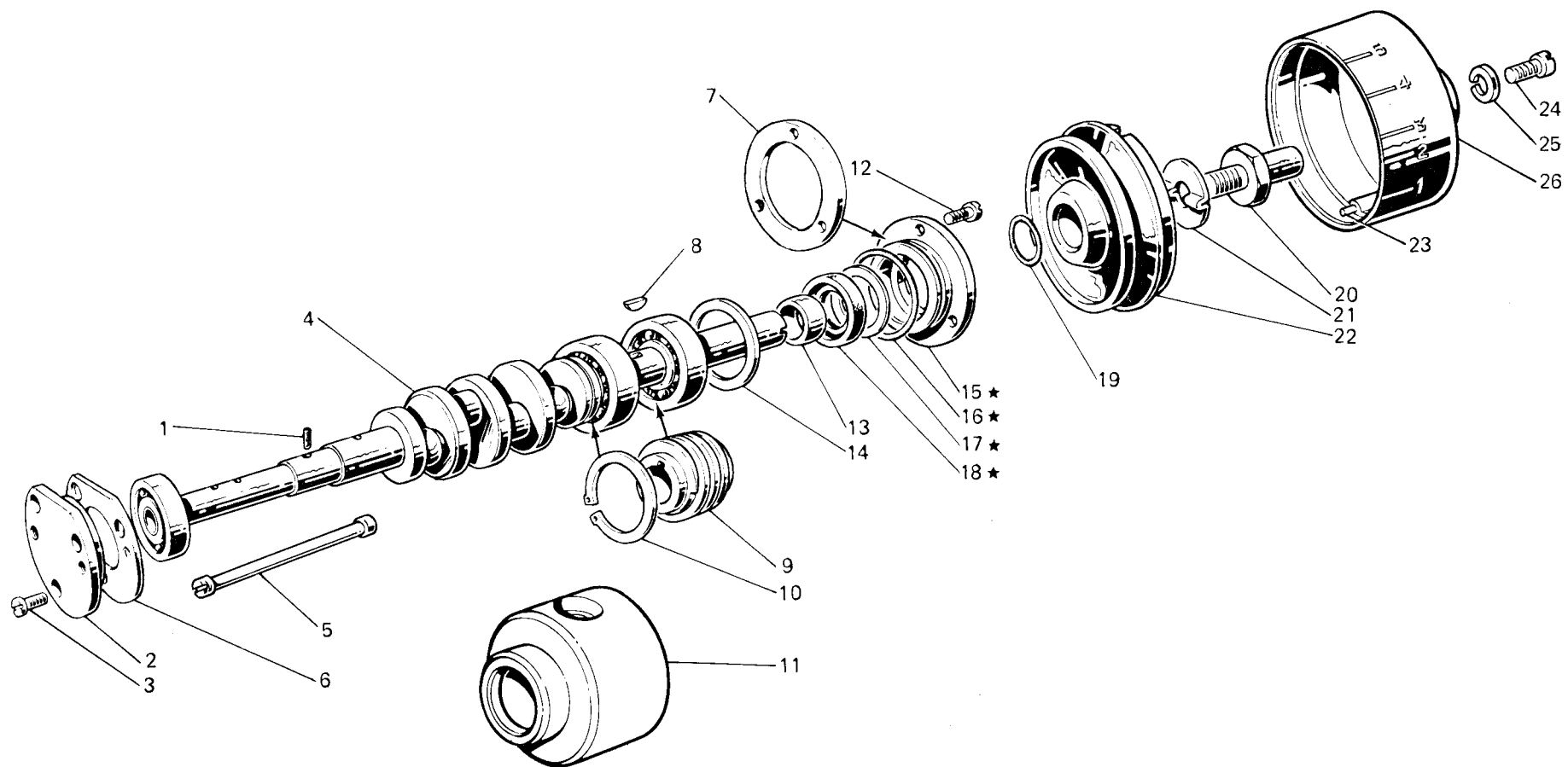


Fig. N. Abb. N.	Part. N. Piece N. Bestell N. Pieza N.	Qt. Anzahl	DESCRIZIONE	DESCRIPTION	DESCRIPTION	BENENNUNG	DESCRIPTION
★	206697-4-01	1	gruppo flangia con anelli	flange with ring assembly	groupe flasque avec anneau		
1	206708-0-00	1	stoppino	wick	mèche		
2	206680-0-01	1	flangia sinistra	left flange	flasque gauche		
3	741956-2-00	3	vite	screw	vis		
4	206705-4-01	1	albero principale con cuscinetti	main shaft	arbre principal		
5	206974-0-00	1	limitatore olio	oil limiter	limiteur huile		
6	206543-0-01	1	guarnizione	gasket	garniture		
7	206544-0-00	1	guarnizione	gasket	garniture		
8	204122-0-10	1	chiavetta	key	clavette		
9	206556-0-01	1	vite senza fine	worm screw	vis sans fin		
10	202386-0-10	1	anello elastico	spring ring	anneau ressort		
11	206682-0-01	1	bussola	bush	bague		
12	722063-2-00	3	vite	screw	vis		
13	206692-0-00	1	distanziale albero princ.	spacer	entretoise		
14	206689-0-01	1	anello di compensazione	ring	anneau		
15	206699-0-02	1	flangia	flange	flasque		
16	701133-0-00	1	anello di tenuta	retainer ring	bague d'étanchéité		
17	206693-0-00	1	rondella	washer	rondelle		
18	700630-0-00	1	anello di tenuta	retainer ring	bague d'étanchéité		
19	701116-0-00	1	anello di tenuta	retainer ring	bague d'étanchéité		
20	206683-0-00	1	perno volante	pin	pivot		
21	206684-0-00	1	chiavetta albero principale	key	clavette		
22	206508-0-00	1	volantino	handwheel	volant		
23	706043-0-00	1	spina	pin	goupille		
24	721525-0-00	1	vite	screw	vis		
25	703007-0-00	1	rondella elastica	spring washer	rondelle élastique		
26	202352-2-11	1	coperchio volante con spina	handwheel cover with pin	couvercle volant avec goupille		

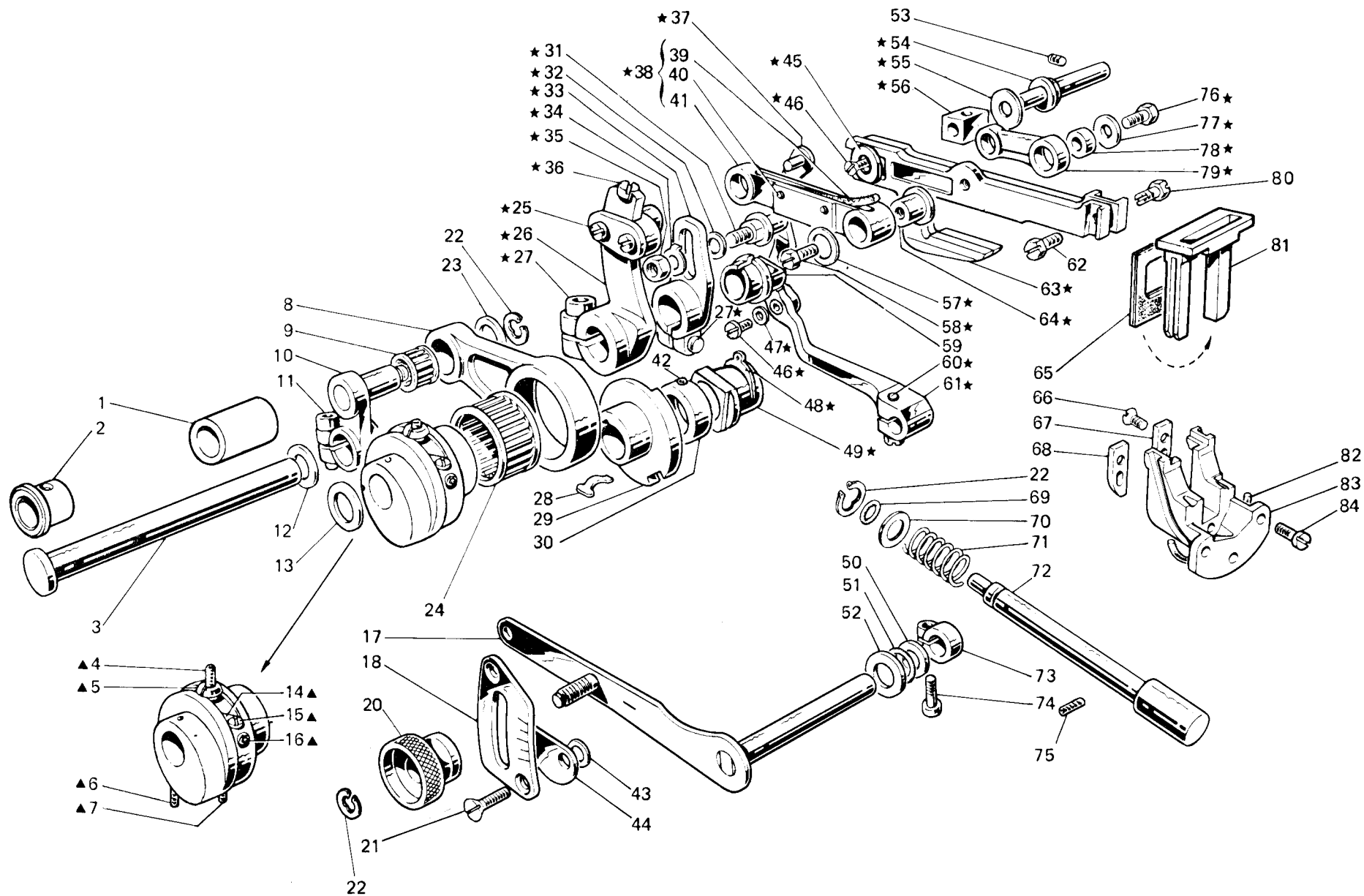


Fig. N. Abb. N.	Part. N. Bestell N. Piece N. Pieza N.	Qt. Anzahl	DESCRIZIONE	DESCRIPTION	DESCRIPTION	BENENNUNG	DESCRIPCION
★	208097-4-00	1	gruppo comando slitta	slide control assembly		groupe commande glissière	
▲	207950-4-00	1	gruppo eccentr. regol. trasporto	eccentric group		groupe excentrique	
1	206594-0-00	1	bussola	bush		bage	
2	206595-0-00	1	bussola	bush		bage	
3	206593-0-00	1	contralbero trasporto	transport countershaft		axe transport	
4	729051-2-00	1	vite	screw		vis	
5	206603-0-10	1	fermo eccentrico	eccentric retainer		pièce blocage excentrique	
6	745815-2-00	1	vite	screw		vis	
7	727884-0-00	1	vite	screw		vis	
8	206599-0-01	1	biella comando trasporto	transport con-rod		bielle commande transport	
9	201358-0-10	1	gabbia a rullini	needles cage		cage à aiguilles	
10	206598-3-00	1	braccio a manov. con vite	crank arm with screw		bras à manivelle avec vis	
11	744334-2-00	1	vite	screw		vis	
12	704841-0-00	1	rondella	washer		rondelle	
13	206602-0-00	1	rondella	washer		rondelle	
14	202412-0-11	1	lardone	gib		lardon	
15	202473-0-11	2	vite	screw		vis	
16	730011-2-00	2	vite	screw		vis	
17	202345-2-31	1	leva	lever		levier	
18	207060-0-00	1	settore di regolazione	sector		secteur	
20	202350-0-10	1	bottone	button		bouton	
21	724895-2-00	2	vite	screw		vis	
22	700207-0-00	3	anello elastico	spring ring		anneau ressort	
23	206546-0-00	1	rondella	washer		rondelle	
24	202385-0-10	1	gabbia a rullini	needles cage		cage à aiguilles	
25	741546-2-00	2	vite	screw		vis	
26	206592-3-00	1	manovella trasp. con viti	transport crank with screw		manivelle transport avec vis	
27	744332-2-00	2	vite	screw		vis	
28	206872-0-00	1	molla	spring		ressort	
29	206605-0-01	1	eccentrico	eccentric		excentrique	
30	206606-2-00	1	anello di rasamento	shim		bage	
31	202063-0-10	1	spina	pin		goupille	
32	704808-0-00	1	rondella	washer		rondelle	
33	206584-2-00	1	braccio manovella	crank arm		bras manivelle	
34	206580-2-00	1	rondella con spina	washer with pin		rondelle avec goupille	
35	746008-0-00	1	dado	nut		écrou	
36	741413-0-00	1	vite	screw		vis	
37	207724-2-00	1	giunto	joint		joint	
38	206615-4-00	1	biellino completo	con-rod assembly		petite-bielle complète	
39	778417-0-00	1	stoppino	wick		mèche	
40	200490-0-00	2	spillo	needle		épingle	
41	206587-0-01	1	biellino	con-rod		petite-bielle	
42	745812-2-00	2	vite	screw		vis	
43	704308-4-00	2	rondella	washer		rondelle	
44	202292-0-10	2	settore	sector		secteur	
45	202475-0-10	1	rondella	washer		rondelle	
46	724032-0-00	2	vite	screw		vis	
47	207719-0-00	1	rondella	washer		rondelle	

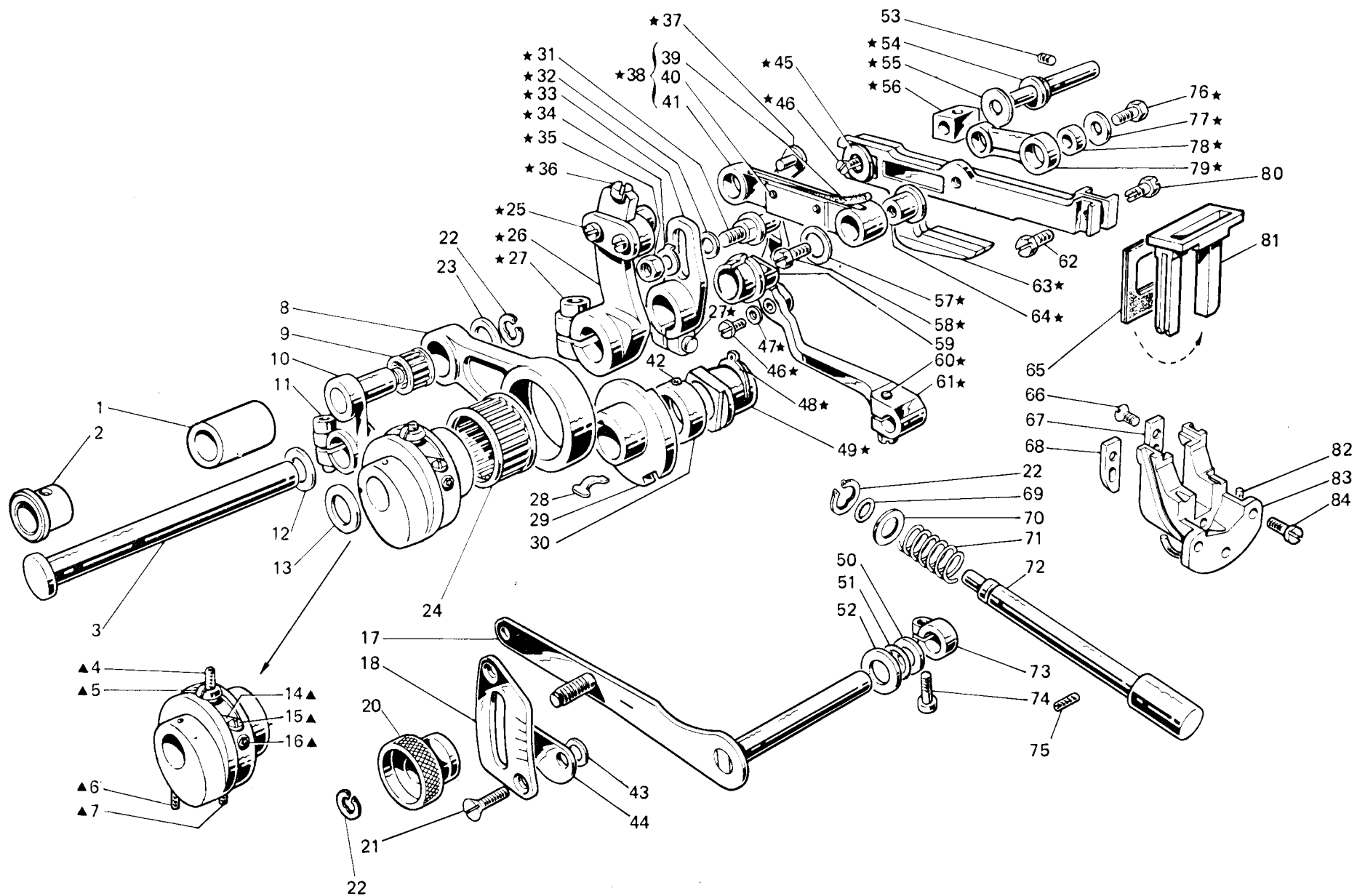


Fig. N. Abb. N.	Part. N. Piecce N. Bestell N. Pieza N.	Qt. Anzahl	DESCRIZIONE	DESCRIPTION	DESCRIPTION	BENENNUNG	DESCRIPCION
48	201610-0-01	1	anello elastico	spring ring	anneau ressort		
49	206617-0-00	1	blocchetto	block	bloc		
50	704829-0-00	1	rondella	washer	rondelle		
51	701007-0-00	1	anello di tenuta	retainer ring	bague d'étanchéité		
52	705230-0-00	1	rondella	washer	rondelle		
53	202478-0-10	1	vite	screw	vis		
54	206613-0-00	1	perno eccentrico	eccentric pin	pivot excentrique		
55	705408-0-00	1	rondella	washer	rondelle		
56	202033-0-10	1	blocchetto	block	bloc		
57	705008-0-00	1	rondella	washer	rondelle		
58	206588-0-00	1	vite	screw	vis		
59	206619-0-00	1	vaschetta olio	oil sump	cuvette huile		
60	740053-2-00	1	vite	screw	vis		
61	207711-2-10	1	braccio reg. differenz.	differential arm	bras regl. différentiel		
62	202489-0-10	1	vite	screw	vis		
63	207942-3-00	1	gruppo slitta	slide assembly	groupe glissière		
64	206586-0-01	1	bussola per biellino	bush	bague		
65	207944-0-00	2	guarnizione raschia olio	gasket	garniture		
66	744512-4-00	2	vite	screw	vis		
67	207947-0-00	1	piastrina	plate	plaque		
68	207945-0-00	1	piastrina	plate	plaque		
69	701004-0-00	1	anello	ring	anneau		
70	704314-2-00	1	rondella	washer	rondelle		
71	202408-0-10	1	molla	spring	ressort		
72	942022-0-00	1	pulsante reg. punto	push-button	poussoir		
73	100620-2-10	1	morsetto con vite	clamp with screw	collier de serrage avec vis		
74	741745-2-00	1	vite	screw	vis		
75	729032-2-00	1	vite	screw	vis		
76	202490-0-10	1	vite	screw	vis		
77	705208-0-00	1	rondella	washer	rondelle		
78	202032-0-11	1	bussolina	bush	bague		
79	206583-0-00	1	biellino	con-rod	petite bielle		
80	202488-0-10	1	vite	screw	vis		
81	207946-0-01	1	telaio raschia olio	oil scraper frame	râcheur huile		
82	207948-0-00	1	guarnizione	gasket	garniture		
83	207943-2-00	1	guida slitta	slide guide	guide coulissant		
84	722063-2-00	3	vite	screw	vis		

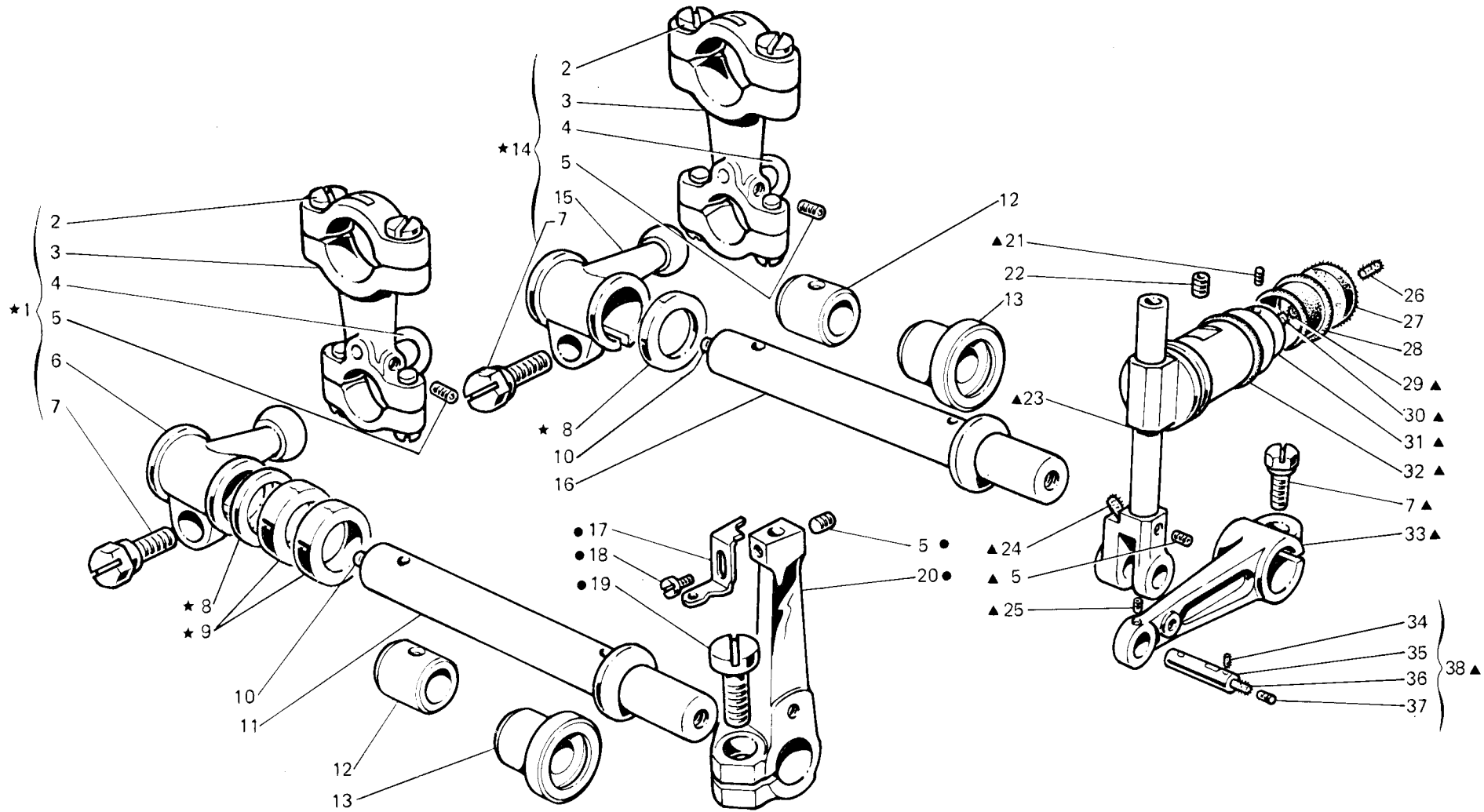


Fig. N. Abb. N.	Part. N. Piece N. Bestell N. Pieza N.	Qt. Anzahl	DESCRIZIONE	DESCRIPTION	DESCRIPTION	BENENNUNG	DESCRIPCION
★	206402-4-00	1	gruppo manicotti com. crochet	control looper assembly	groupe manchon comm. crochet		
▲	206418-4-00	1	gruppo comando crochet sup.	upper looper control ass.	groupe com. crochet sup.		
●	208038-4-00	1	gruppa porta crochet inferiore	lower looper holder ass.	groupe porte-crochet inf.		
1	206454-4-01	1	gruppo manicotto con biella	coupling ass. with con-rod	groupe manchon avec bielle		
2	743243-2-00	8	vite per biella	screw	vis		
3	202071-2-20	2	biella con viti	con-rod with screw	bielle avec vis		
4	206643-0-01	2	cavallotto	coupling	cavalier		
5	745812-2-00	4	vite	screw	vis		
6	206660-2-02	1	manicotto	coupling	manchon		
7	201128-0-10	3	vite	screw	vis		
8	704848-0-00	2	rondella	washer	rondelle		
9	704845-0-00	2	rondella	washer	rondelle		
10	206695-0-00	2	tappo per albero	plug	bouchon		
11	207096-2-00	1	albero crochet inferiore	lower looper shaft	arbre crochet inférieur		
12	206651-0-00	2	bussola	bush	bage		
13	202065-0-20	2	bussola	bush	bage		
14	206452-4-00	1	gruppo manicotto con biella	coupling ass. with con-rod	groupe manchon avec bielle		
15	206658-2-02	1	manicotto	coupling	machon		
16	207095-2-00	1	albero crochet superiore	upper looper shaft	arbre crochet supérieur		
17	208014-0-00	1	squadretta	bracket	équerre		
18	741415-0-00	1	vite	screw	vis		
19	721883-0-00	1	vite	screw	vis		
20	206654-2-10	1	porta crochet inferiore	lower looper holder	porte crochet inférieur		
21	745800-2-00	1	vite	screw	vis		
22	745168-0-00	1	vite	screw	vis		
23	206412-3-00	1	guida oscillante	oscillating guide	guide oscillant		
24	778403-0-00	1	stoppino	wick	mèche		
25	745810-2-00	1	vite	screw	vis		
26	778236-0-00	1	stoppino	wick	mèche		
27	206686-0-00	1	disco lubrificazione guida	lubrication disc	discque graissage		
28	202720-0-00	1	paraolio	oil retainer	pare-huile		
29	778405-0-00	1	stoppino	wick	mèche		
30	778410-0-00	1	stoppino	wick	mèche		
31	202062-2-10	1	anello con vite	ring	bage avec vis		
32	701113-0-00	1	anello di tenuta	retainer ring	bage d'étanchéité		
33	206653-2-01	1	braccio	arm	bras		
34	778202-0-00	4	stoppino	wick	mèche		
35	202086-0-11	1	spina	pin	goupille		
36	778401-0-00	1	stoppino	wick	mèche		
37	745002-0-00	1	vite	screw	vis		
38	206645-4-01	1	spina completa	pin	goupille		

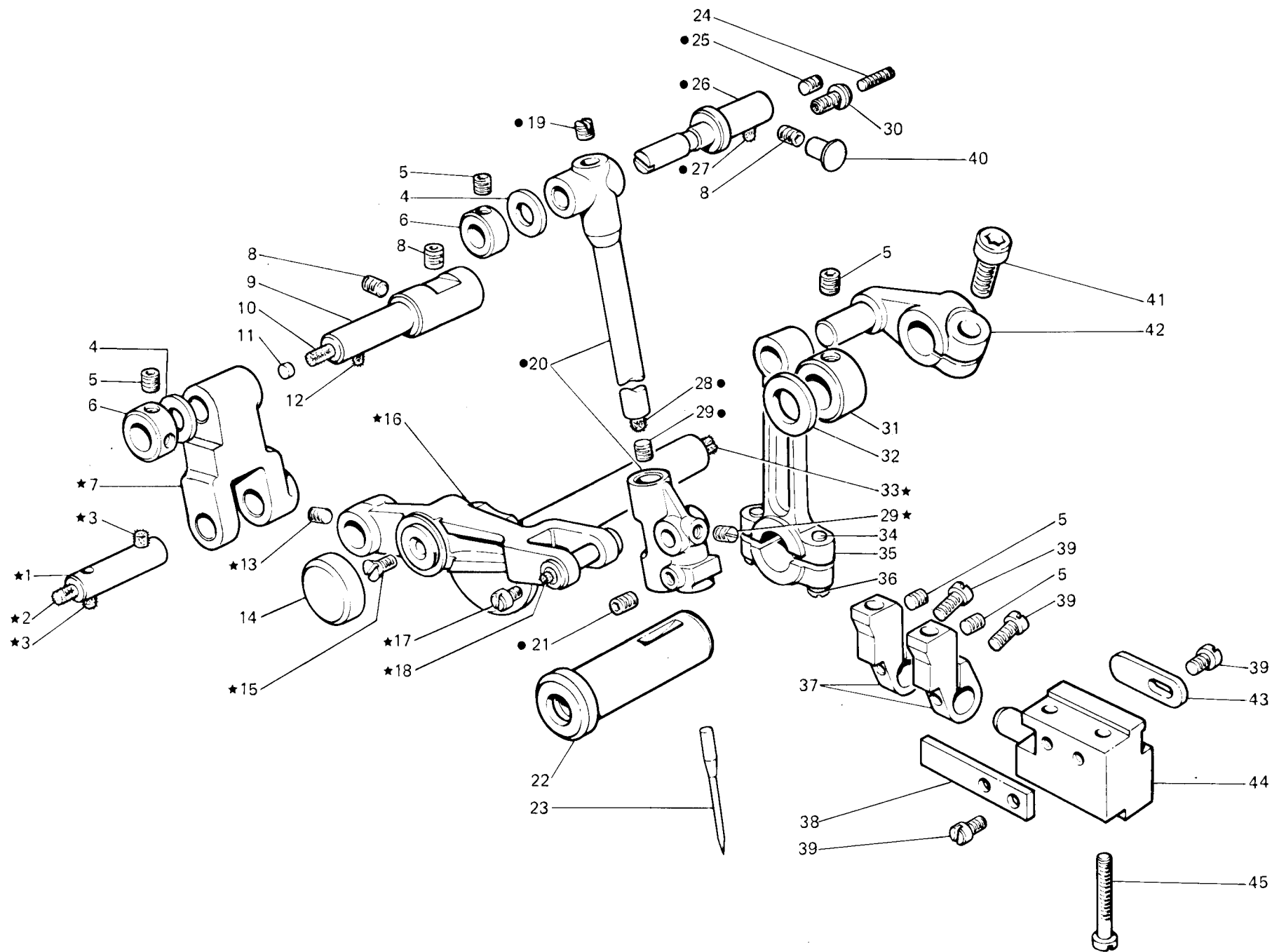
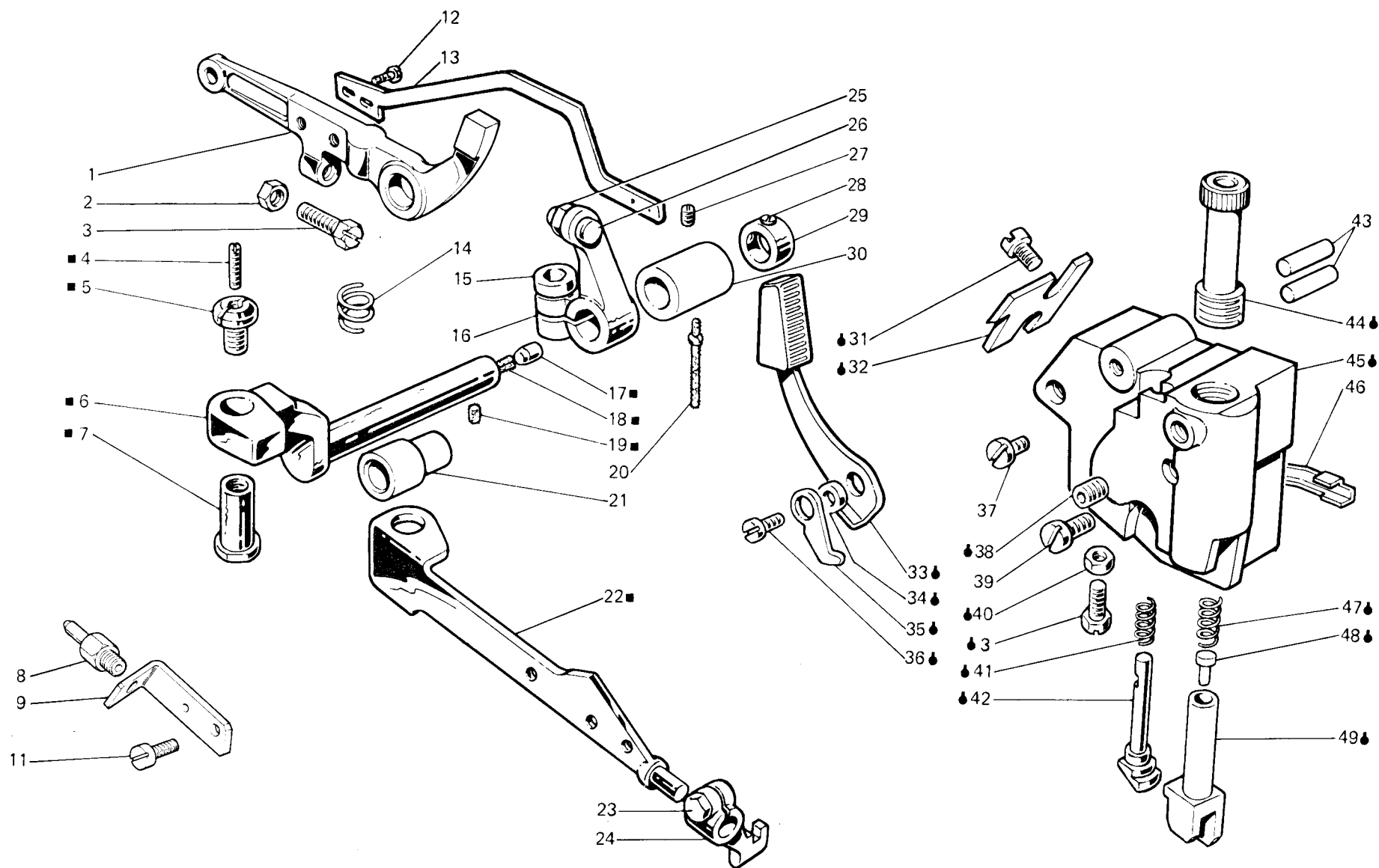


Fig. N. Abb. N.	Part. N. Bestell N. Piece N. Pieza N.	Qt. Anzahl	DESCRIZIONE	DESCRIPTION	DESCRIPTION	BENENNUNG	DESCRIPCION
★	208140-4-11	1	cinematismo comando ago (con fig. ●)	needle control assembly (with fig. ●)	cinématisme comm. aiguille (avec fig. ●)		
●	208161-4-01	1	slitta con barra completa	slide with bar assembly	glissière avec barre complète		
1	207930-0-01	1	spina	pin	goupille		
2	778414-0-00	1	stoppino	wick	mèche		
3	778204-0-00	3	stoppino	wick	mèche		
4	309560-0-00	2	rondella	washer	rondelle		
5	745812-0-00	7	vite	screw	vis		
6	207692-2-00	2	anello di rasamento con viti	ring with screw	anneau avec vis		
7	207932-0-10	1	leva	lever	levier		
8	729034-2-00	3	vite	screw	vis		
9	208163-4-11	1	perno con stoppini e tappo	pin with wick and plug	pivot avec mèche et bouchon		
10	778417-0-00	1	stoppino	wick	mèche		
11	206521-0-00	1	tappo	plug	bouchon		
12	778511-0-00	2	stoppino	wick	mèche		
13	745114-0-00	1	vite	screw	vis		
14	206533-0-00	1	coperchio per leva	cover for lever	couvercle pour levier		
15	724032-0-00	1	vite	screw	vis		
16	208142-3-01	1	gruppo leva con spina	lever with pin assembly	groupe levier avec goupille		
17	741405-0-00	1	vite	screw	vis		
18	778208-0-00	1	stoppino	wick	mèche		
19	310167-0-00	1	vite	screw	vis		
20	207922-3-10	1	slitta con barra	slide with bar	glissière avec barre		
21	729012-2-00	1	vite	screw	vis		
22	206538-0-00	1	bussola	bush	bague		
23	765200-6-90	1	ago RIM 27 fin. 90	needle RIM 27 size 90	aiguille RIM 27 jauge 90		
24	729051-2-00	1	vite	screw	vis		
25	727014-2-00	1	vite	screw	vis		
26	207927-0-01	1	perno	pin	pivot		
27	778419-0-00	1	stoppino	wick	mèche		
28	778503-0-00	1	stoppino	wick	mèche		
29	745002-0-00	2	vite	screw	vis		
30	202529-0-10	1	vite di fermo	screw	vis		
31	206606-2-00	1	anello di rasamento con viti	ring	anneau		
32	705029-0-00	1	rondella	washer	rondelle		
33	778837-0-00	1	stoppino	wick	mèche		
34	743469-2-00	2	vite	screw	vis		
35	208520-2-10	1	biella completa	con-rod assembly	bielle complet		
36	704213-2-00	2	rondella	washer	rondelle		
37	207998-2-00	2	porta salva ago e spingi asola	front and rear needle guard holder	porte protège-aiguille et pare-boucle		
38	207991-0-00	1	piastrina	plate	plaque		
39	741552-0-00	5	vite	screw	vis		
40	207574-0-00	1	tappo	plug	bouchon		
41	744334-2-00	1	vite	screw	vis		
42	206540-2-10	1	manovella alb. sup. con viti	crank	manivelle		
43	207999-0-00	1	piastrina	plate	plaque		
44	207990-0-00	1	supporto salva ago	rear needle guard support	support protège-aiguille		
45	722480-2-00	2	vite	screw	vis		



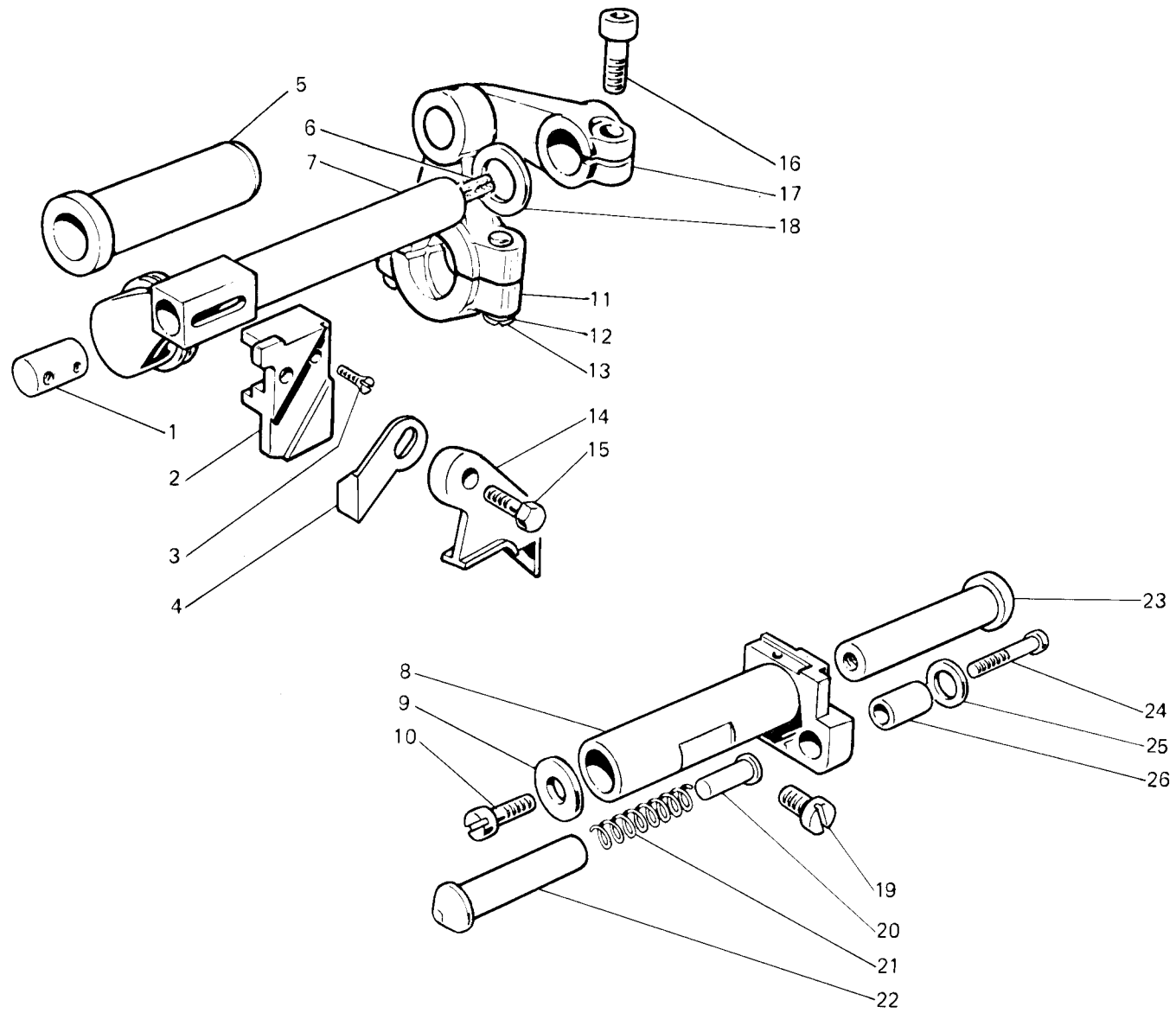
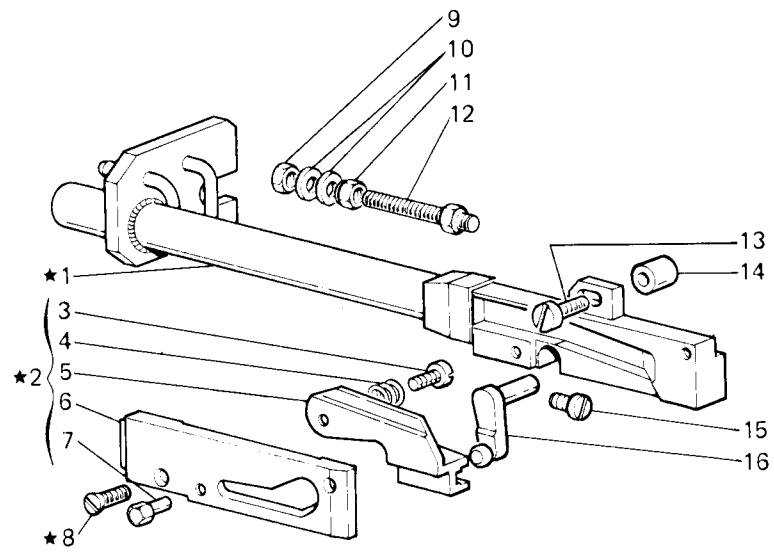


Fig. N. Abb. N.	Part. N. Piece N. Bestell N. Pieza N.	Qt. Anzahl	DESCRIZIONE	DESCRIPTION	DESCRIPTION
1	202130-0-11	1	perno	pin	pivot
2	207588-0-00	1	placchetta	plate	plaque
3	744533-0-00	1	vite	screw	vis
4	200662-0-10	1	carterino	cover	carter
5	206539-0-01	1	bussola	bush	bague
6	778835-0-00	1	stoppino	wick	mèche
7	207861-4-00	1	albero colt.sup.con stoppino	shaft	arbre
8	942023-0-00	1	porta coltello inferiore	lower knife holding	porte couteau inférieur
9	704409-2-00	1	rondella	washer	rondelle
10	742457-2-00	1	vite	screw	vis
11	206578-2-00	1	biella completa	con-rod assembly	bielle complet
12	704213-2-00	2	rondella	washer	rondelle
13	743469-2-00	2	vite	screw	vis
14	207589-0-00	1	staffa	bracket	équerre
15	207421-0-01	1	vite	screw	vis
16	744334-2-00	1	vite	screw	vis
17	206574-2-01	1	manovella alb.coltello sup.	crank for upper knife shaft	manivelle arbre couteau sup.
18	705030-0-00	1	rondella	washer	rondelle
19	742758-0-00	1	vite	screw	vis
20	206758-0-00	1	puntalino	pin	pivot
21	202128-0-10	1	molla	spring	ressort
22	206757-0-00	1	bussola	bush	bague
23	202134-0-11	1	perno	pin	pivot
24	722471-2-00	1	vite	screw	vis
25	704406-0-00	1	rondella	washer	rondelle
26	202129-0-10	1	bussola	bush	bague



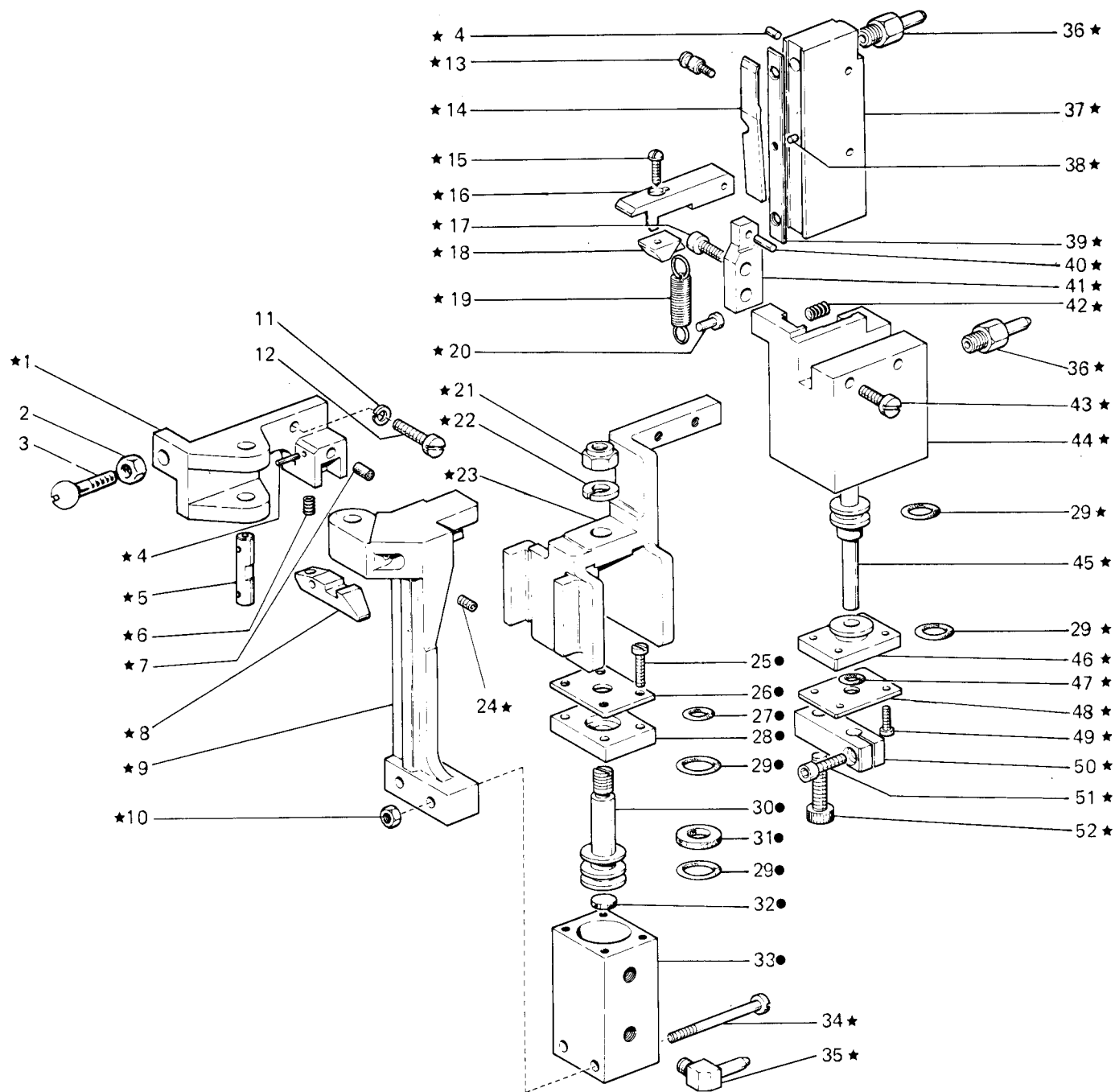


Fig. N. Abb. N.	Part. N. Piece N. Bestell N. Pieza N.	Qr. Anzahl	DESCRIZIONE	DESCRIPTION	DESCRIPTION	BENENNUNG	DESCRIPTION
★	944412-4-10	1	gruppo aspira catenella con taglio (con fig. ●)	chain suction ass. (with fig. ●)	groupe aspiration chaînette (avec fig. ●)		
●	942010-4-00	1	cilindro pneumatico	pneumatic cylinder	cylindre pneumatique		
1	944397-0-01	1	supporto fisso	support	support		
2	746007-2-00	1	dado	nut	écrou		
3	206715-0-01	1	vite per piano lavoro	screw	vis		
4	706242-0-00	2	spina	pin	goupille		
5	202154-0-12	1	spina	pin	goupille		
6	309621-0-00	1	molla	spring	ressort		
7	944376-0-00	1	ammortizzatore	damper	amortisseur		
8	944399-0-01	1	gancio	hook	crochet		
9	942017-0-00	1	supporto mobile	support	support		
10	733806-2-00	2	dado	nut	écrou		
11	703004-0-00	1	rondella elastica	spring washer	rondelle élastique		
12	721473-2-00	1	vite	screw	vis		
13	944466-0-00	1	perno	pin	pivot		
14	944422-0-00	1	coltello superiore	upper knife	couteau supérieur		
15	722080-2-00	1	vite	screw	vis		
16	944394-0-10	1	pressello	holding device	presseur		
17	722400-2-00	3	vite	screw	vis		
18	944465-0-00	1	pattino	sliding block	pattin		
19	100195-0-11	1	molla	spring	ressort		
20	944396-0-00	1	spina	pin	goupille		
21	923943-0-00	1	dado	nut	écrou		
22	703007-0-00	1	rondella elastica	spring washer	rondelle élastique		
23	942016-0-00	1	supporto mobile	support	support		
24	729011-2-00	1	vite	screw	vis		
25	722070-2-00	4	vite	screw	vis		
26	942013-0-00	1	coperchio	cover	couvercle		
27	701005-0-00	1	anello di tenuta	retainer ring	bague d'étanchéité		
28	942014-0-00	1	flangia di guida	flange	flasque		
29	701009-0-00	4	anello di tenuta	retainer ring	bague d'étanchéité		
30	942015-0-00	1	pistoncino	piston	piston		
31	942012-0-00	1	ammortizzatore	damper	amortisseur		
32	924045-0-00	1	ammortizzatore	damper	amortisseur		
33	942011-0-00	1	corpo del cilindro	cylinder body	corps cylinder		
34	722153-2-00	2	vite	screw	vis		
35	924457-0-00	2	raccordo	pipe connection	raccord		
36	924797-0-10	3	attacco	pipe	raccord		
37	944390-2-10	1	corpo d'aspirazione				
38	706412-0-00	1	spina	pin	goupille		
39	944392-0-00	1	coltello fisso	immovable knife	couteau fixe		
40	706222-0-00	1	spina	pin	goupille		
41	944408-0-10	1	supporto	support	support		
42	202875-0-10	1	molla	spring	ressort		
43	722082-2-00	2	vite	screw	vis		
44	944391-0-01	1	corpo del cilindro	cylinder body	corps cylinder		
45	944467-0-00	1	pistone	piston	piston		
46	926669-4-01	1	flangia con anello di tenuta	flange with retainer ring	flasque avec bague d'étanchéité		

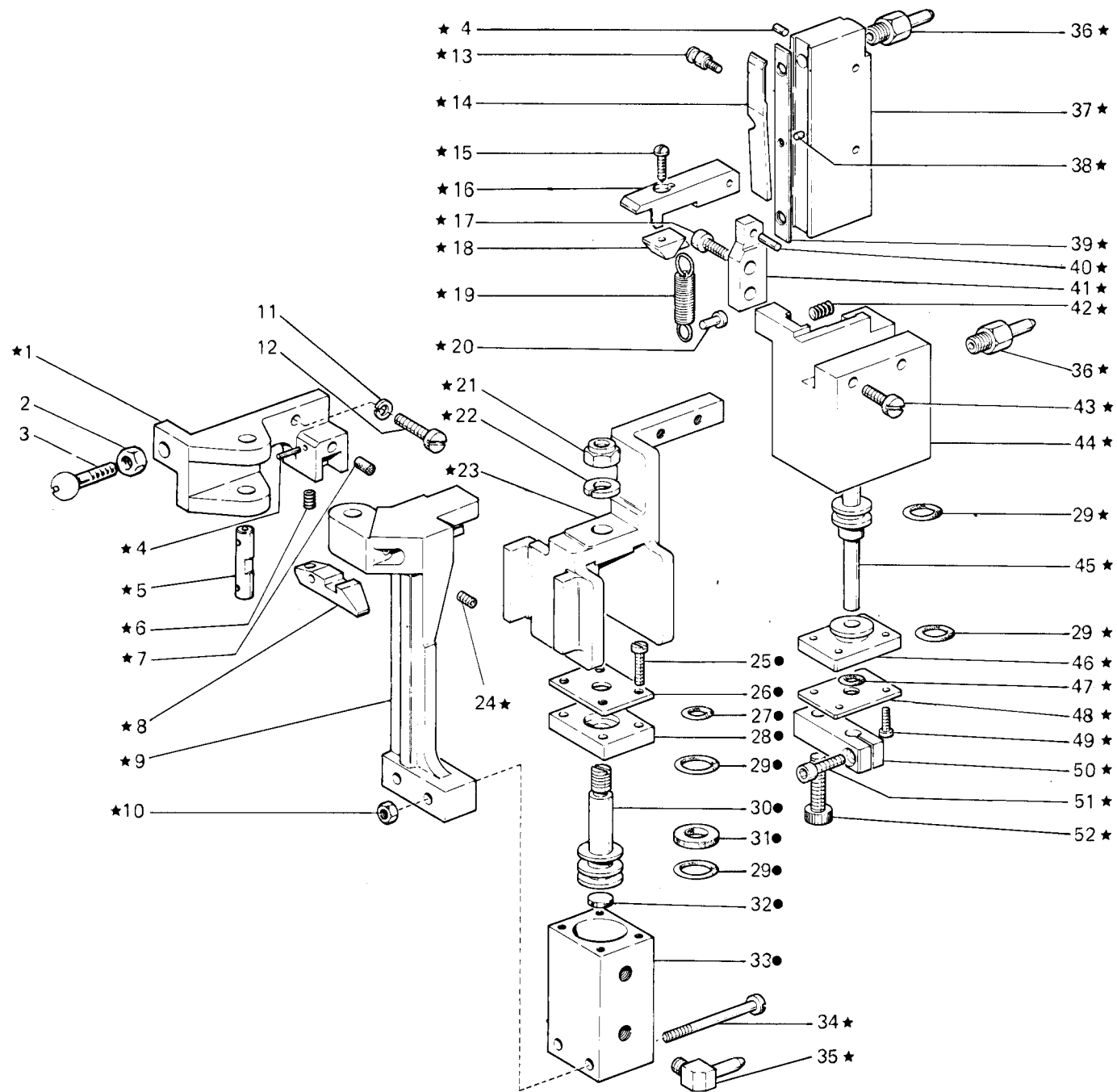


Fig. N. Abb. N.	Part. N. Bestell N. Piece N. Pieza N.	Qt. Anzahl	DESCRIZIONE	DESCRIPTION	DESCRIPTION	BENENNUNG	DESCRIPCION
47	701104-0-00	1	anello di tenuta	retainer ring		bague d'étanchéité	
48	924745-0-20	1	coperchio	cover		couvercle	
49	741495-2-00	4	vite	screw		vis	
50	944395-2-00	1	blocchetto con vite	block		block	
51	722400-2-00	1	vite	screw		vis	
52	722441-2-00	1	vite	screw		vis	

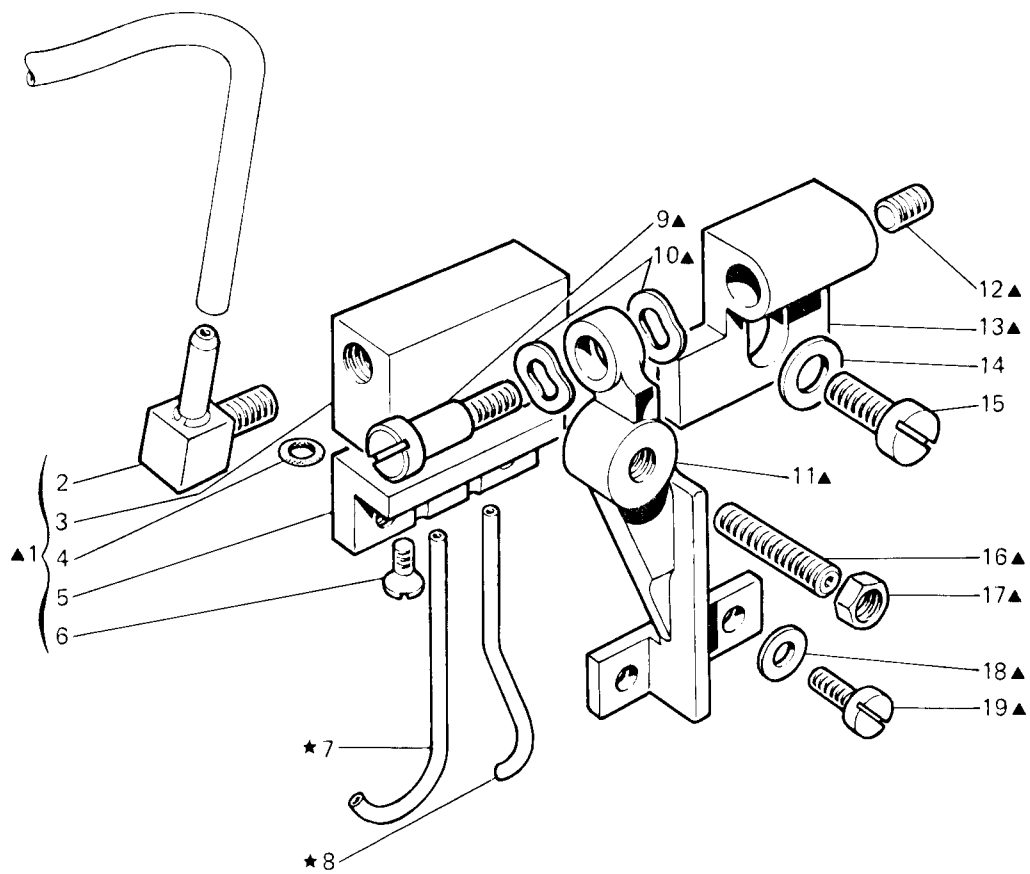


Fig. N. Abb. N.	Part. N. Piecce N. Bestelli N. Pieza N.	Qt. Anzahl	DESCRIZIONE	DESCRIPTION	DESCRIPTION	BENENNUNG	DESCRIPCION
★	925213-4-00	1	gruppo raffreddam. aghi (con fig. ▲)	needles cooling assembly (with fig. ▲)	groupe refroidissement aiguilles (avec fig. ▲)		
▲	925207-4-00	1	supporto distrib. completo	support assembly	support complet		
1	922453-4-00	1	distributore completo	distributor assembly	distributeur complet		
2	925761-0-01	1	attacco	pipe union	raccord		
3	922454-0-00	1	semicorpo superiore	upper half-body	semi-corps supérieur		
4	701000-0-00	2	anello di tenuta	retainer ring	bague d'étanchéité		
5	922455-0-00	1	semicorpo inferiore	lower half-body	semi-corps inférieur		
6	744631-2-00	2	vite	screw	vis		
7	922464-0-00	1	tubetto	pipe	tube		
8	922463-0-00	1	tubetto	pipe	tube		
9	743482-2-00	1	vite	screw	vis		
10	307605-0-00	2	anello di compensazione	ring	anneau		
11	925216-0-00	1	braccio	arm	bras		
12	729012-2-00	1	vite	screw	vis		
13	925217-0-00	1	supporto	support	support		
14	704226-2-00	1	rondella	washer	rondelle		
15	742623-2-00	1	vite	screw	vis		
16	729062-2-00	1	vite	screw	vis		
17	746007-2-00	1	dado	nut	écrou		
18	704104-2-00	2	rondella	washer	rondelle		
19	741675-2-00	2	vite	screw	vis		

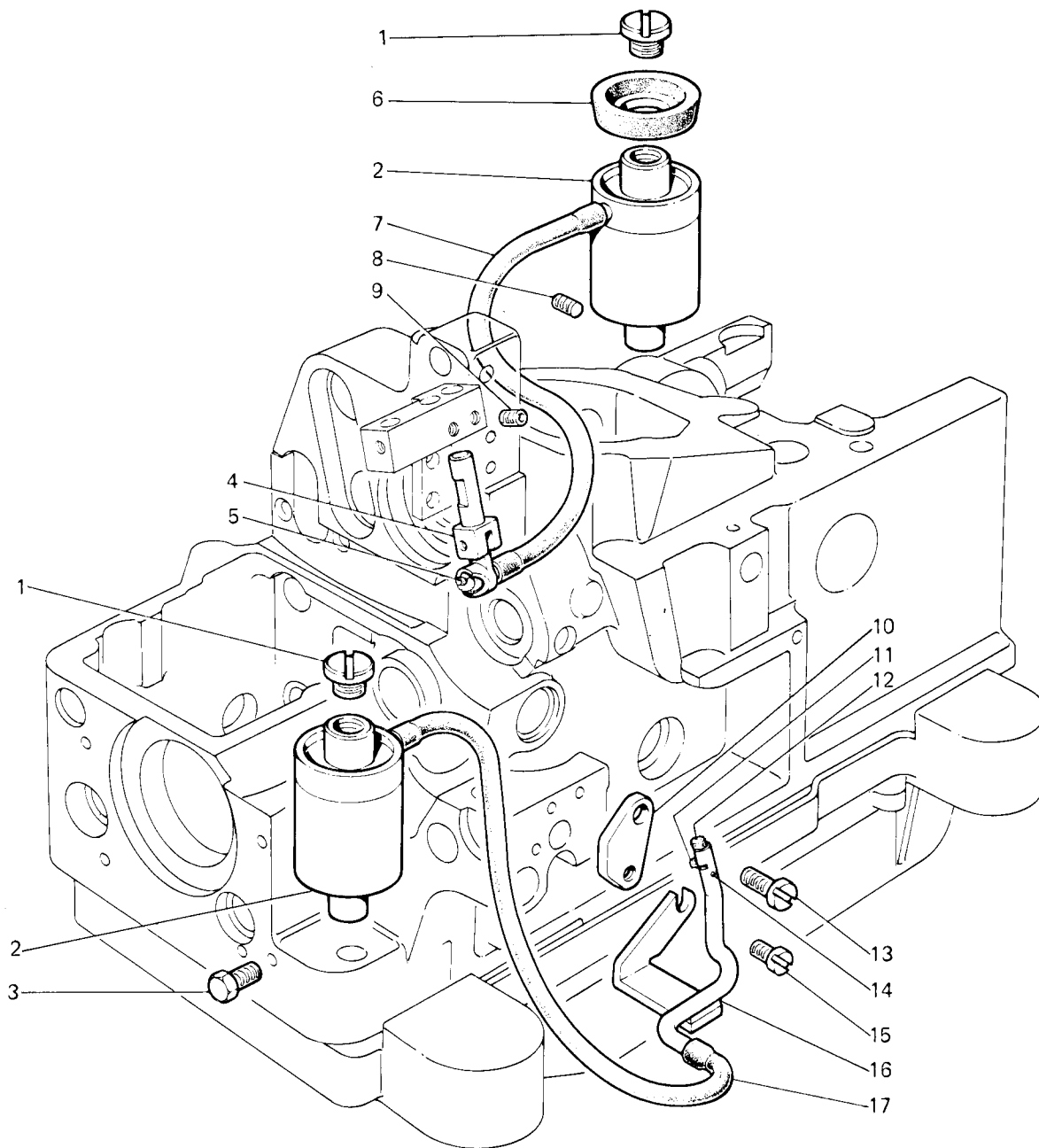


Fig. N. Abb. N.	Part. N. Bestell N. Piece N. Pieza N.	Qt. Anzahl	DESCRIZIONE	DESCRIPTION	DESCRIPTION	BENENNUNG	DESCRIPCION
1	207969-0-00	2	tappo	plug	bouchon		
2	207976-0-00	2	contenitore silicone	container	container		
3	740041-2-00	1	vite	screw	vis		
4	208219-3-00	1	supporto snodato compl.	support assembly	support complet		
5	778842-0-00	1	stoppino	wick	mèche		
6	208019-0-00	1	guarnizione	gasket	garniture		
7	208208-0-00	1	guaina	sheath	gaine		
8	729013-2-00	1	vite	screw	vis		
9	745800-2-00	1	vite	screw	vis		
10	208144-0-00	1	piastrina	plate	plaque		
11	778837-0-00	1	stoppino	wick	mèche		
12	778237-0-00	1	stoppino	wick	mèche		
13	722073-2-00	1	vite	screw	vis		
14	208209-0-00	1	spina	pin	goupille		
15	741634-2-00	1	vite	screw	vis		
16	208148-4-00	1	gruppo tubetto	pipe assembly	groupe tube		
17	208207-0-00	1	guaina	sheath	gaine		

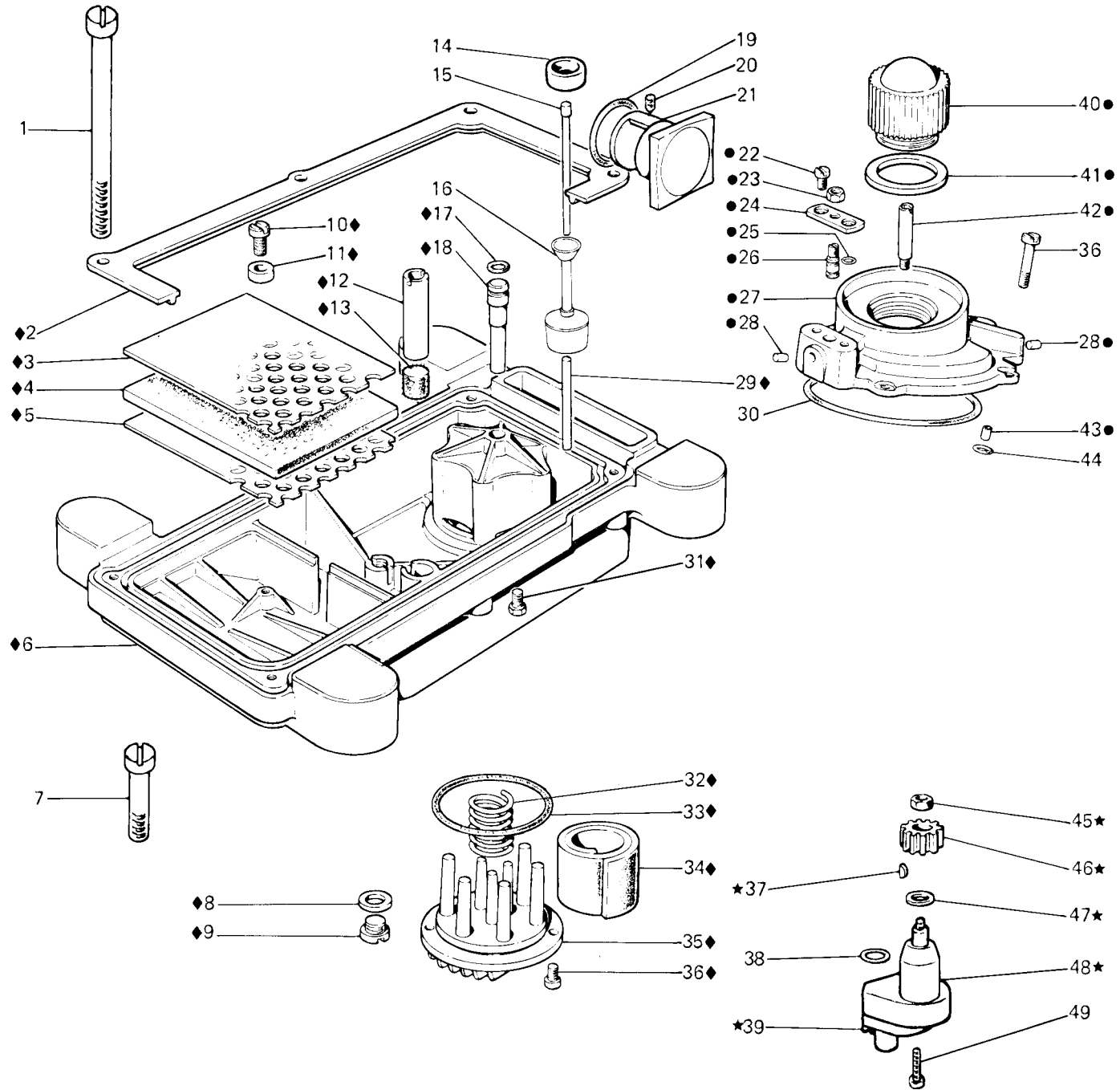
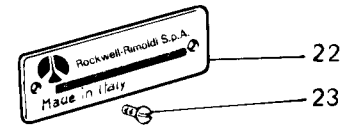
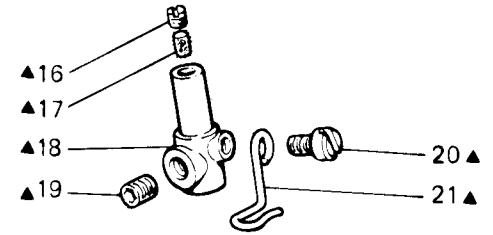
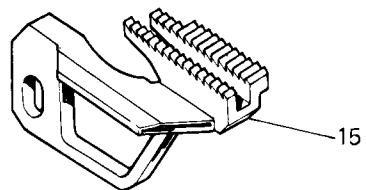
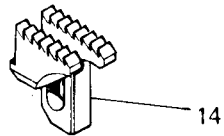
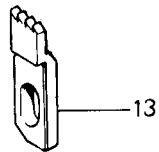
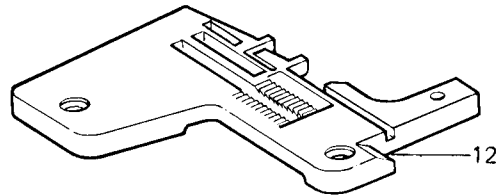
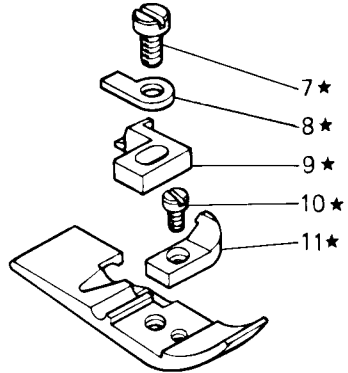
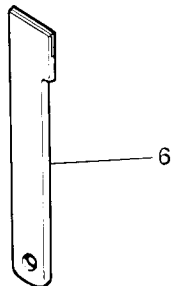
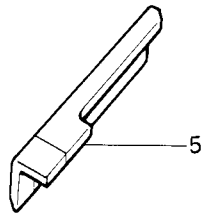
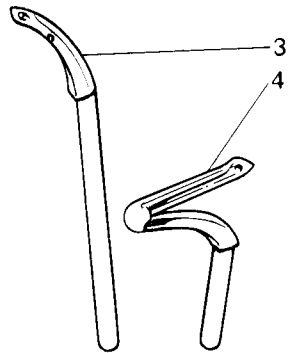
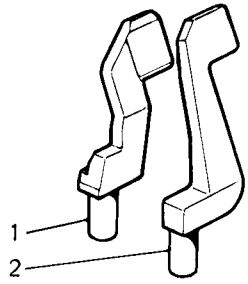


Fig. N. Abb. N.	Part. N. Piece N. Bestell N. Pieza N.	Qt. Anzahl	DESCRIZIONE	DESCRIPTION	DESCRIPTION	BENENNUNG	DESCRIPCION
●	207972-4-01	1	coperchio distrib. olio compl.	cover assembly	couvercle complet		
★	206550-4-03	1	gruppo pompa olio	oil pump assembly	groupe pompe à huile		
◆	208012-4-01	1	bacinella olio completa	oil sump assembly	réservoir huile complet		
1	207917-0-00	4	vite fissa bacinella	screw	vis		
2	207909-0-00	1	guarnizione bacinella	gasket	garniture		
3	206567-0-01	1	lamiera forata superiore	upper sheet	plaque perforée sup.		
4	206566-0-00	1	filtro	filter	filtre		
5	206565-0-01	1	lamiera forata inferiore	lower sheet	plaque perforée inf.		
6	207901-0-01	1	bacinella	oil sump	réservoir		
7	748086-2-00	1	vite fissa bacinella	screw	vis		
8	705977-0-00	1	rondella	washer	rondelle		
9	206564-0-00	1	tappo	plug	bouchon		
10	721484-2-00	1	vite	screw	vis		
11	990335-0-10	1	distanziale	spacer	entretoise		
12	206568-0-01	1	tubetto	pipe	tube		
13	206569-0-01	1	filtro	filter	filtre		
14	206667-0-00	1	tappo decompressione	plug	bouchon		
15	207975-0-00	1	astina indicat. liv. olio	stick	jauge niveau huile		
16	206665-2-00	1	galleggiante completo	float assembly	flotteur complet		
17	701005-0-00	1	anello di tenuta	retainer ring	bague d'étanchéité		
18	206558-0-01	1	tubo aspirante	pipe	tube		
19	701031-0-00	1	anello di tenuta	retainer ring	bague d'étanchéité		
20	729022-2-00	1	vite	screw	vis		
21	208087-3-00	1	indicatore livello olio	oil level gauge	indicateur niveau huile		
22	741535-0-00	2	vite	screw	vis		
23	746007-2-00	1	dado	nut	écrou		
24	207979-0-00	1	piastrina	plate	plaque		
25	701002-0-00	1	anello di tenuta	retainer ring	bague d'étanchéité		
26	207978-0-00	1	pistoncino	piston	piston		
27	207970-2-01	1	coperchio con tappo	cover with plug	couvercle with bouchon		
28	301586-0-10	2	tappo	plug	bouchon		
29	206662-0-00	1	spina	pin	goupille		
30	701151-0-00	1	anello di tenuta	retainer ring	bague d'étanchéité		
31	720411-2-00	1	vite	screw	vis		
32	206545-0-00	1	spirale per coperchio	spiral for cover	spirale pour couvercle		
33	701051-0-00	1	guarnizione	gasket	garniture		
34	206559-0-01	1	filtro	filter	filtre		
35	206560-0-20	1	coperchio	cover	couvercle		
36	722063-2-00	6	vite	screw	vis		
37	206557-0-00	1	chiavetta	key	clavette		
38	701004-0-00	1	anello di tenuta	retainer ring	bague d'étanchéité		
39	721494-2-00	2	vite	screw	vis		
40	207973-0-00	1	cupolina	cup	coupole		
41	705970-0-00	1	guarnizione	gasket	garniture		
42	207971-0-00	1	ugello	nozzle	gicleur		
43	207977-0-00	1	bussolina	bush	bague		
44	701106-0-00	1	anello di tenuta	retainer ring	bague d'étanchéité		
45	733507-0-00	1	dado	nut	écrou		
46	206555-0-01	1	ruota	wheel	roue		
47	704813-0-00	1	rondella	washer	rondelle		
48	206554-0-02	1	coperchio	cover	couvercle		
49	722511-2-00	2	vite	screw	vis		



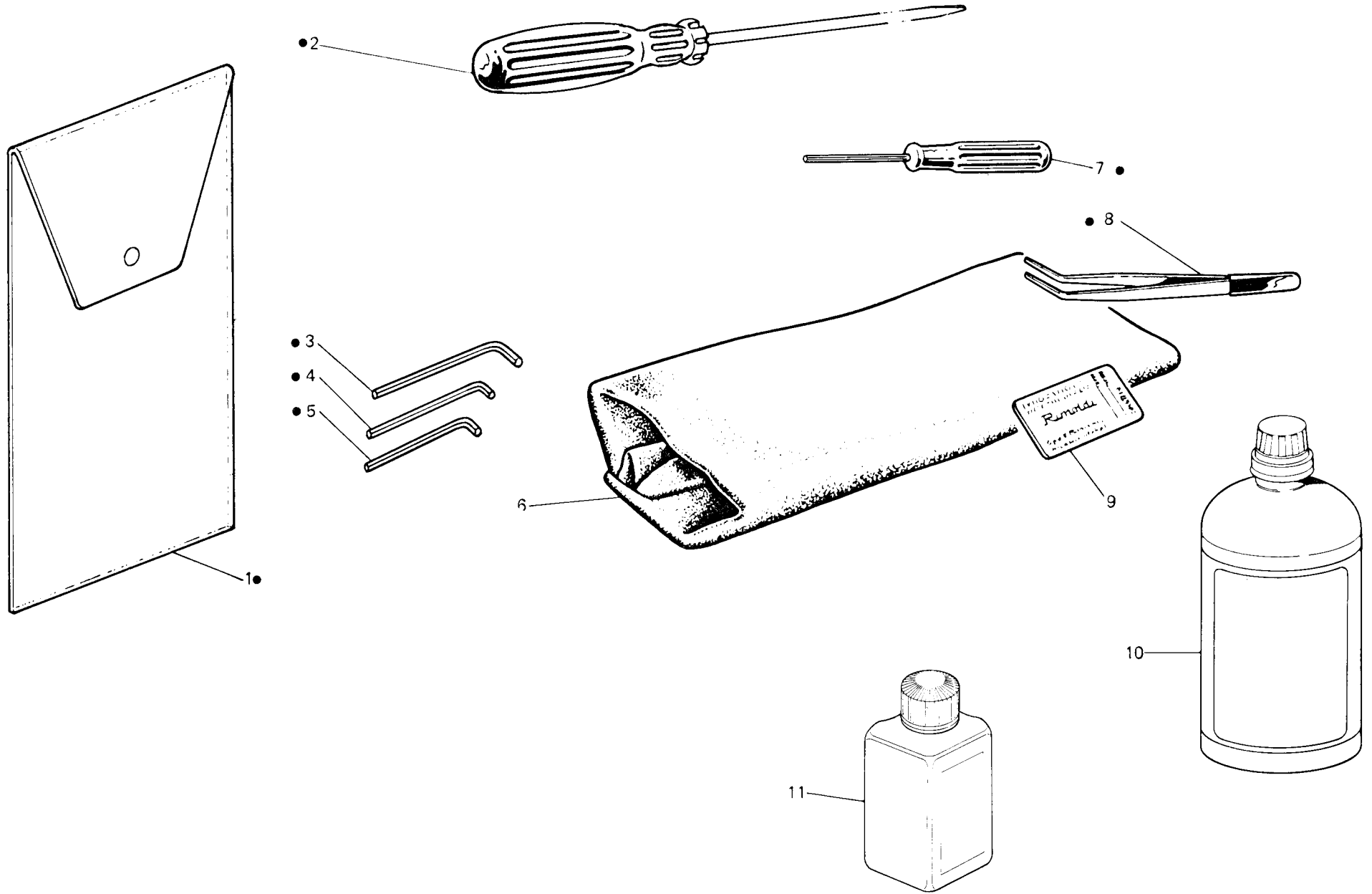


Fig. N. Abb. N.	Part. N. Piece N. Bestell N. Pieza N.	Qt. Anzahl	DESCRIZIONE	DESCRIPTION	DESCRIPTION	BENENNUNG	DESCRIPTION
●	991400-4-02	1	busta accessori completa	accessoires envelope assembly	envelope accessoires complète		
1	991415-0-00	1	busta accessori	accessoires envelope	envelope accessoires		
2	990723-0-00	1	cacciavite medio	screw driver	tournevis moyen		
3	990639-0-10	1	chiave esag. da 3 mm.	3 mm. hexagonal key	clé hexagonale de 3 mm.		
4	990685-0-10	1	chiave esag. da 2,5 mm.	2,5 mm. hexagonal key	clé hexagonale de 2,5 mm.		
5	990325-0-10	1	chiave esag. da 2 mm.	2 mm. hexagonal key	clé hexagonale de 2 mm.		
6	990183-0-13	1	cuffia protezione testa	machine cover	couverture protection tête		
7	990474-0-11	1	chiave esag. da 1,5 mm.	1,5 mm. hexagonale key	clé hexagonale de 1,5 mm.		
8	990176-0-10	1	pinza per infilatura	threading clers	pince pour enfilage		
9	★	1	bustina aghi	needles packet	paquette aiguilles		
10	991284-0-00	1	lattina olio	oil container	bidon de huile		
11	990934-0-00	1	barattolo olio con silicone	can	cuve		
			★ per l'ordinazione della bustina citare lo stesso simbolo dell'ago montato sulla testa	to order packet of needles please specify symbol of needle fitted on machine	cour commander un sachet d'aiguille donner le symbol de l'aiguille montée sur la tête		

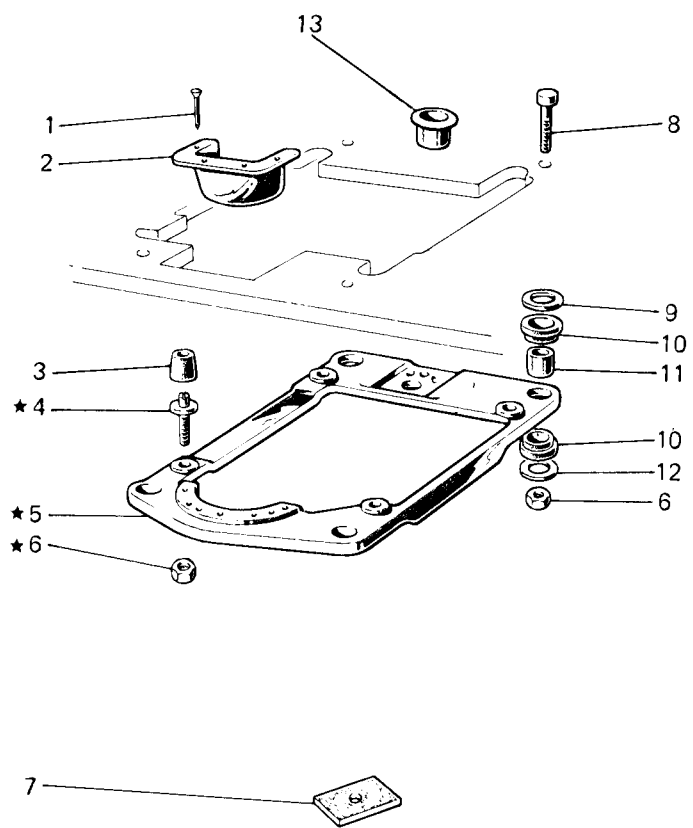


Fig. N. Abb. N.	Part. N. Piece N. Bestell N. Pieza N.	Qt. Anzahl	DESCRIZIONE	DESCRIPTION	DESCRIPTION	BENENNUNG	DESCRIPCION
★	990987-4-00	1	supporto testa completo	head support assembly	support tête complet		
1	900201-0-10	4	chiodino	rivet	clou		
2	991187-0-01	1	bocchetta	cup	bouche		
3	990982-0-00	4	ammortizzatore	damper	amortisseur		
4	900694-0-11	4	perno	pin	pivot		
5	990981-0-00	1	supporto testa	head support	support tête		
6	733008-2-00	4	dado	nut	écrou		
7	900203-0-10	4	ammortizzatore	damper	amortisseur		
8	722905-2-00	4	vite	screw	vis		
9	704346-2-00	4	rondella	washer	rondelle		
10	901101-0-00	8	ammortizzatore	damper	amortisseur		
11	901102-0-00	4	distanziale	spacer	entretoise		
12	704345-2-00	4	rondella	washer	rondelle		
13	900204-0-10	1	bussola	bush	bague		

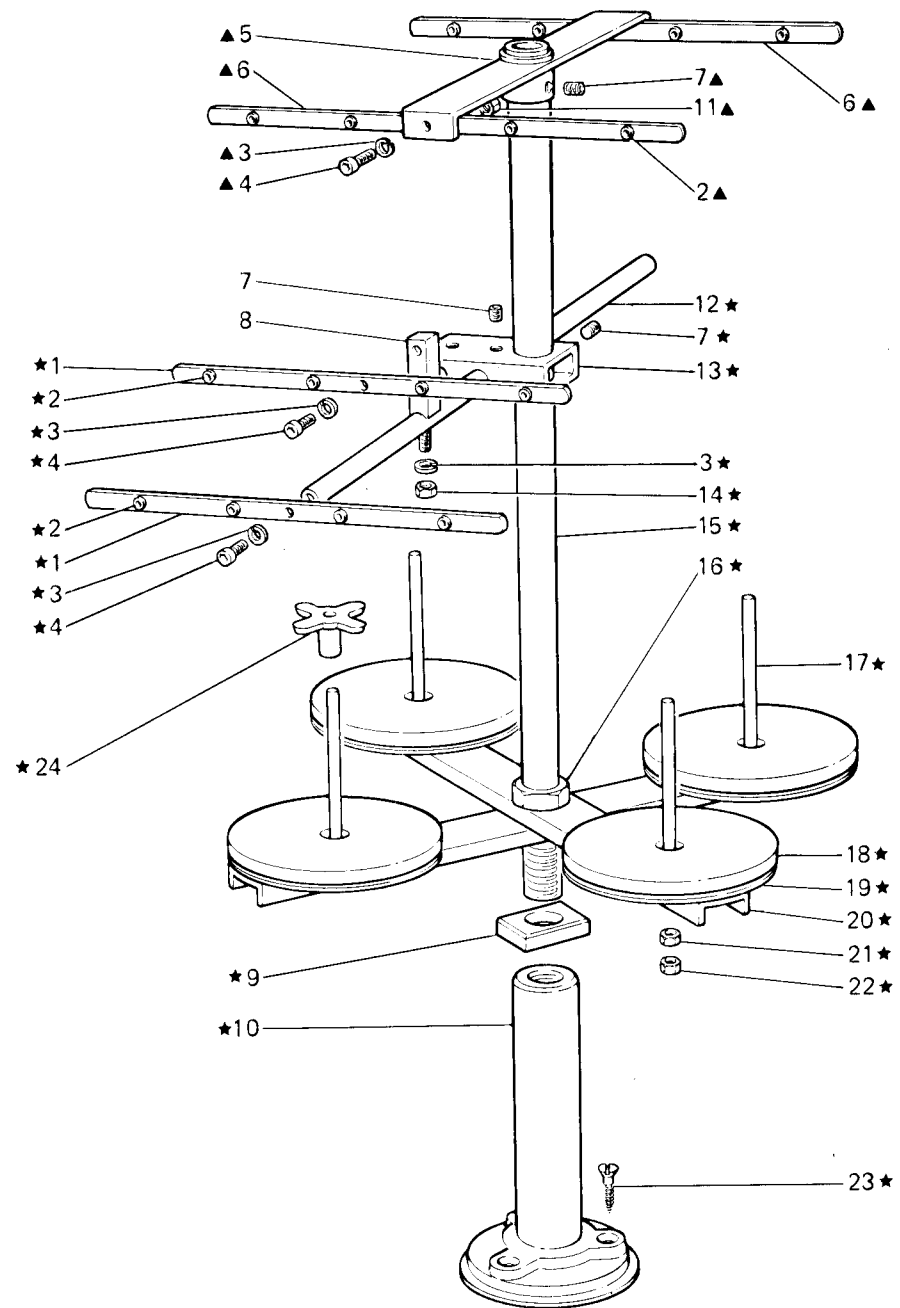


Fig. N. Abb. N.	Part. N. Piece N. Bestell N. Pieza N.	Qt. Anzahl	DESCRIZIONE	DESCRIPTION	DESCRIPTION
▲ ★	991120-5-01	1	porta bobine completo 3-4- fili	bobbin carrier 3-4- threads	porte bobine compl. 3-4- fils
▲	991194-4-00	1	telaio completo	frame assembly	bâti complet
1	991108-2-01	2	piattina	disc	plateau
2	991268-0-00	12	bussolina	bush	bague
3	703005-0-00	6	rondella elastica	spring washer	rondelle élastique
4	722431-2-00	6	vite	screw	vis
5	991247-2-00	1	traversa con mozzo	tie with hub	traverse avec moyeau
6	991126-0-10	2	piattina	disc	plateau
7	729034-2-00	3	vite	screw	vis
8	991269-2-00	1	supporto completo	support assembly	support complet
9	991172-0-00	2	distanziale	spacer	entretoise
10	991174-0-00	1	basetta	base	base
11	733505-2-00	2	dado	nut	écrou
12	991264-2-00	1	asta	rod	tige
13	991279-2-00	1	blocchetto	block	block
14	733806-2-00	1	dado	nut	écrou
15	991206-0-00	1	tubo	pipe	tube
16	733211-2-00	1	dado	nut	écrou
17	991111-2-00	4	astina con dadi	rod with nut	tigeavec écrou
18	991179-0-01	4	disco	disc	disque
19	991112-0-00	4	piatto	disc	plateau
20	991199-0-00	2	traversa	tie	traverse
21	733508-2-00	4	dado	nut	écrou
22	925433-0-00	4	dado	nut	écrou
23	731506-2-00	3	vite da legno	screw	vis
			SOLO A RICHIESTA	ONLY ON REQUEST	SEULEMENT SUR DEMANDE
24	991134-0-00	4	centrabobine	bobbin center	centre bobine