

527-34-1TD-02

EDIZIONE - EDITION 11/81

**n. 258**

Il presente Catalogo Pezzi di Ricambio è costituito da due parti: la prima, definita come "Catalogo base", comprende i particolari montati sulla testa più significativa (la prima dell'elenco in copertina); la seconda comprende tutti i particolari delle altre teste basi o derivate, che differiscono da quella del Catalogo base.

Le Teste basi sono elencate in copertina con un carattere più grande rispetto a quello delle derivate.

Nella consultazione del Catalogo tenere presente che:

1. Tutti i particolari non fornibili sciolti non vengono richiamati singolarmente, ma soltanto illustrati nel gruppo d'appartenenza.
2. I riferimenti delle figure dei particolari che compongono il gruppo sono di norma raggruppati in una parentesi. In alcuni casi però, dove non è possibile il raggruppamento, i numeri che nelle tavole illustrative richiamano i singoli pezzi sono affiancati dallo stesso segno particolare, con cui è indicato l'intero gruppo.
3. Sulle tavole relative alle altre teste sono elencati tutti i particolari diversi o non montati sulla testa del Catalogo Base. Dette tavole portano in alto a destra il simbolo della testa cui si riferiscono (con indicato fra parentesi - nel caso di derivata - il simbolo della testa da cui deriva).  
I disegni di questo gruppo di tavole illustrano soltanto i pezzi nuovi o sostanzialmente diversi rispetto a quelli montati sulla testa più significativa del Catalogo.  
I particolari richiamati come simbolo, ma non illustrati, conservano lo stesso numero di figura dei corrispondenti raffigurati sul Catalogo base.  
I particolari comuni a tutte le teste comprese nel Catalogo, vengono richiamati soltanto nel primo gruppo di tavole.  
I particolari definiti come "pezzi annullati" si intendono quelli non montati sulla testa a cui la tavola si riferisce. Nel caso di un gruppo annullato, viene indicato soltanto il simbolo del gruppo, ma devono intendersi annullati anche tutti i particolari componenti il gruppo stesso.

Per ogni testa viene sempre riportata interamente la tavola relativa agli organi di cucitura.

Per facilitare la ricerca viene riportato l'indice numerico di tutti i particolari illustrati sul Catalogo base, con la relativa tavola in cui gli stessi sono richiamati.

#### AGHI

Gli aghi sono contraddistinti dal sistema e dalla finezza, la quale indica il diametro medio espresso in centesimi di millimetro.

Il sistema dell'ago e la finezza sono marcati oltre che sulla busta, anche sull'ago stesso.

Nelle ordinazioni precisare, oltre il simbolo, il sistema e la finezza degli aghi desiderati. In caso di dubbio, allegare, un ago campione o una bustina vuota.

#### AVVERTENZA

Nella richiesta di parti di ricambio citare sempre il relativo numero di matricola della macchina, il simbolo del particolare e la denominazione ufficiale usata sul catalogo.

This spare parts catalogue is made up of two parts: in the first one, called "basic catalogue", all the details of most representative head are listed (the first head listed on the cover); the second one includes the details of the other main heads or derived ones, which are different from that of the basic catalogue.

The main heads are listed on the cover in bigger lettering to distinguish them from the derived heads.

When you consult the catalogue will you please note that:

1. all parts which cannot be supplied by themselves are not indicated alone, but shown together with the group to which they belong;
2. the references of the pictures of the parts making up the group are usually put in brackets.  
In some cases, however, when their grouping is not possible, the numbers of the various parts in the tables are marked with the same particular sign with which the whole group is indicated.
3. In the tables of the other heads there are listed all the parts not fitted on the head in the basic catalogue.  
These tables are marked at the top right-hand corner with the symbol of the head which the table refers to.  
The drawings in this group of tables show only the parts which are new or basically different from those fitted on the most representative head in the catalogue.  
The parts which are represented only by the symbol but not illustrated keep the same figure number as the corresponding parts shown in the basic catalogue.  
The parts which are common to all the heads in the catalogue are listed only in the first group of tables.  
Parts marked "annulled part" are those not fitted on the head which the table refers to.  
When an assembly has been annulled only the assembly symbol is specified, but all the parts forming the assembly must also be considered annulled.  
For each head the table for sewing parts is always repeated completely.

To make it easier to locate the parts, the reference numbers of all of those shown in the basic catalogue are listed together with the number of the table in which they are to be found.

#### NEEDLES

The needles are marked with system and size; the size indicates the average diameter in hundredths of a millimeter.

The system and size of the needle are shown on the packet as well as on the needle itself.  
When ordering please state symbol, system and size. If you have doubts, enclose a sample needle or an empty packet with your order.

#### ATTENTION

When ordering spare parts always state the serial number of the machine, the symbol of the part in question and the description given in the catalogue.

Ce catalogue "pièces détachées" est formé de deux parties: la première appelée "catalogue base" comprend toutes les pièces montées sur la tête la plus significative (celle en tête de la liste de couverture), la seconde comprend toutes les pièces montées sur les autres têtes de base ou dérivées qui sont différentes de celle du "catalogue base".

Les têtes de base sont énumérées sur la couverture, en caractères plus grands que les têtes dérivées.

Lorsque l'on consulte le catalogue, se souvenir que:

1. Toutes les pièces qui ne sont pas fournies séparément mais qui font partie d'un groupe, ne sont pas indiquées séparément.
2. Les symboles des pièces qui forment un groupe sont regroupés entre parenthèses. Cependant, lorsque ceci n'a pas été possible, les symboles, qui dans les tables d'illustration correspondent aux pièces, sont suivis du même signe particulier qui indique le groupe tout entier.
3. Dans les tables relatives aux autres têtes, nous avons indiqué toutes les pièces différentes de celles de tête du "catalogue base" ou qui ne sont pas montées sur ces dernières. Ces tables portent, en haut à droite, le symbole des têtes auxquelles elles se réfèrent (pour les dérivées, le symbole de la tête de laquelle elles dérivent est indiqué entre parenthèses).  
Les dessins de ce groupe de tables représentent seulement les nouvelles pièces ou celles qui sont différentes des pièces montées sur la tête la plus significative du catalogue.  
Les pièces indiquées par un symbole, mais qui ne sont pas illustrées, gardent le même numéro de dessin que celles correspondantes, illustrées sur le catalogue base.  
Les pièces communes à toutes les têtes du catalogue, sont indiquées seulement dans le premier groupe de tables.  
Les pièces définies comme "pièces annulées" sont celles qui ne sont pas montées sur la tête à laquelle se réfère la table. Dans le cas de l'annulation d'un groupe, nous indiquons seulement le symbole du groupe, mais toutes les pièces qui forment ce groupe sont annulées.  
Pour chaque tête est toujours indiquée la table se référant aux organes de couture.

Pour faciliter la recherche, le catalogue renferme l'index numérique de toutes les pièces illustrées avec indication de la table dans laquelle elles sont indiquées.

#### AIGUILLES

Les aiguilles se différencient par le système et la grosseur, laquelle indique le diamètre moyen exprimé en centièmes de millimètre.

Le système de l'aiguille et sa grosseur, sont indiqués non seulement sur le sachet mais également sur l'aiguille.

Dans la commande, préciser, en plus du symbole, le système et la grosseur des aiguilles désirées. En cas de doute, joindre une aiguille comme modèle ou un sachet vide.

#### ATTENTION

Dans la commande de pièces détachées, indiquer toujours le numéro de la machine, le symbole de la pièce et la dénomination officielle mentionnée sur le catalogue.



**INDICE NUMERICO      INDEX**

Part. N.	Tav. N.	Part. N.	Tav. N.	Part. N.	Tav. N.	Part. N.	Tav. N.	Part. N.	Tav. N.	Part. N.	Tav. N.	Part. N.	Tav. N.
100305-0-10	1/A	202398-0-10	9	206521-0-00	5	206606-2-00	3-5	206734-2-00	1	207118-0-01	11	207947-0-00	3
100620-2-10	3	202408-0-10	3	206533-0-00	5	206613-0-00	3	206740-0-00	1/A	207421-0-00	7	207948-0-00	3
100891-0-10	8	202412-0-11	3	206538-0-10	5	206615-4-00	3	206747-0-01	1/A	207510-4-00	10	207950-4-00	3
200413-2-10	8	202473-0-11	3	206539-0-00	7	206617-0-01	3	206748-0-00	9	207520-2-00	10	207951-4-00	9
200490-0-00	3	202475-0-10	3	206540-2-00	5	206618-0-10	3	206754-0-00	1/A	207540-0-00	10	207952-2-00	9
201128-0-10	4	202478-0-10	3	206543-0-01	2	206619-0-00	9	206755-0-00	1/A	207574-0-00	5	207953-0-00	9
201358-0-10	3-8	202480-0-10	9	206544-0-00	2	206620-0-00	6	206756-0-01	1	207588-0-00	7	207954-0-00	9
201610-0-01	3	202484-0-10	9	206545-0-00	9/A	206621-0-00	6	206757-0-00	7	207589-0-00	7	207955-2-01	1
202026-0-10	9	202488-0-10	3	206546-0-00	3	206622-0-00	6	206758-0-00	7	207692-2-00	5	207958-0-00	1
202027-0-10	9	202489-0-10	3	206549-2-10	5	206632-2-00	6	206764-0-00	1	207711-2-10	3	207959-0-00	6
202032-0-11	3	202490-0-10	3	206550-4-03	9	206635-0-00	6	206767-0-00	1	207719-0-00	3	207960-0-00	6
202033-0-10	3	202492-0-10	2	206554-0-02	9	206637-0-00	6	206768-0-00	1	207724-2-00	3	207961-0-00	9
202062-2-10	4	202529-0-10	6	206555-0-01	9	206642-0-00	6	206769-0-10	1	207758-0-01	9	207962-0-00	6
202063-0-10	3	202556-0-01	1/A	206556-0-02	2	206643-0-01	4	206790-2-10	3	207856-0-00	1	207965-0-00	6
202065-0-20	4	202558-2-01	1/A	206557-0-00	9	206645-4-01	4	206794-0-00	3	207858-0-00	1	207967-0-01	6
202071-2-20	4	202590-0-11	11	206558-0-01	9/A	206650-0-00	1/A	206795-0-00	3	207861-4-00	7	207968-0-01	1/A
202086-0-12	4	202609-0-10	10	206559-0-01	9/A	206651-0-00	4	206796-0-00	3	207872-0-00	1/A	207970-2-01	9
202095-0-11	10	202720-0-00	4	206560-0-20	9/A	206652-2-01	4	206797-0-00	3	207876-2-00	6	207971-0-00	9
202110-0-10	6	203025-0-10	10	206564-0-00	9/A	206654-2-10	4	206798-0-00	3	207878-3-00	6	207972-4-01	9
202128-0-10	7	203142-0-10	6	206565-0-01	9/A	206658-2-02	4	206799-0-00	3	207879-0-00	6	207973-0-00	9
202129-0-10	7	203219-0-11	10	206566-0-00	9/A	206659-2-01	4	206808-0-01	6	207880-0-00	6	207975-0-00	9/A
202130-0-11	7	203768-0-11	10	206567-0-01	9/A	206662-0-00	9/A	206810-2-00	6	207881-2-00	6	207977-0-00	9
202132-0-10	7	203772-0-11	10-11	206568-0-01	9/A	206665-2-00	9/A	206812-0-00	1/A	207882-2-00	6	207978-0-00	9
202133-4-10	7	203928-0-20	8	206569-0-01	9/A	206667-0-01	9	206872-0-00	3	207887-4-00	6	207979-0-00	9
202134-0-11	7	203949-0-10	8	206574-2-00	7	206679-0-00	2	206875-0-00	3	207893-0-00	1/A	207980-0-00	1
202142-0-10	10	204021-0-10	10	206578-2-00	7	206680-0-01	2	206974-0-00	2	207901-0-01	9/A	207981-0-00	1
202143-0-10	11	204122-0-10	2	206580-2-00	3	206682-0-01	2	207000-2-00	11	207909-0-00	9/A	207983-0-00	1
202146-0-10	10	204947-0-10	6	206583-0-00	3	206686-0-00	4	207008-2-00	11	207910-0-00	1/A	207984-0-00	1
202165-0-10	10	205951-0-00	10	206584-2-00	3	206687-2-00	9	207015-2-00	11	207916-0-00	1/A	207985-0-00	1
202195-0-11	11	205952-0-00	10	206586-0-01	3	206688-0-00	9	207080-2-11	8	207917-0-00	9	207988-0-00	1
202214-0-11	1-6	206140-3-02	10	206587-0-01	3	206689-0-01	2	207087-2-00	2	207918-0-00	1/A	207990-0-00	5
202227-0-10	1/A	206142-0-01	10	206588-0-00	3	206690-2-00	9	207088-2-10	8	207919-0-00	1/A	207991-0-00	5
202228-0-10	1/A	206143-0-00	10	206592-3-00	3	206692-0-00	2	207089-0-00	8	207922-3-10	5	207992-0-00	10
202229-0-10	1/A	206296-0-00	9	206593-0-00	3	206693-0-00	2	207093-0-00	8	207927-0-01	5	207995-0-00	10
202267-2-13	1/A	206341-4-00	1/A	206594-0-00	3	206695-0-00	4	207094-0-01	8	207930-0-01	5	207998-2-00	5
202279-0-10	1/A	206342-4-00	1/A	206595-0-00	3	206697-4-01	2	207095-2-00	4	207932-0-10	5	207999-0-00	5
202300-0-10	11	206400-4-00	4	206598-3-00	3	206699-0-01	2	207096-2-00	4	207942-3-00	3	208012-4-01	9/A
202371-0-10	6	206410-3-00	4	206599-0-01	3	206705-4-01	2	207097-0-02	8	207943-2-00	3	208015-0-00	4
202385-0-10	3	206415-4-00	4	206602-0-00	3	206708-0-00	2	207103-0-00	8	207944-0-00	3	208022-2-00	1
202386-0-10	2	206452-4-00	4	206603-0-10	3-5	206711-0-00	1/A	207112-0-00	8	207945-0-00	3	208039-4-00	4
202391-0-11	6	206453-4-00	4	206605-0-01	3	206733-0-01	3	207116-3-01	11	207946-0-01	3	208060-4-00	1

**INDICE NUMERICO      INDEX**

Part. N.	Tav. N.	Part. N.	Tav. N.	Part. N.	Tav. N.	Part. N.	Tav. N.	Part. N.	Tav. N.	Part. N.	Tav. N.	Part. N.	Tav. N.
208080-2-00	1	304073-0-10	8	701116-0-00	2	720505-4-00	14	730061-2-00	8	744533-0-00	7	780468-0-40	10
208087-3-00	9	304084-0-20	8	701133-0-00	2	720545-4-00	14	731107-2-00	15	744553-0-00	8	788001-0-01	1/A
208090-0-00	1/A	304085-4-20	8	701151-0-00	9	721412-2-00	1-8-10	733008-2-00	9/A-12-14	744631-2-00	1/A	900201-0-10	14
208091-0-00	1/A	304086-0-10	8	702415-0-00	1	721434-2-00	6	733503-0-00	1/A-11	744634-0-00	9	900203-0-10	14
208097-4-00	3	304412-0-10	8	703005-0-00	15	721435-2-00	1	733505-2-00	6	744742-2-00	10	900204-0-10	14
208100-4-00	1/A	304413-0-10	8	703405-0-00	3	721443-2-00	1-9	733507-0-00	9	745002-0-00	4-5-8	900694-0-11	14
208133-2-00	6	304424-0-10	8	704009-4-00	14	721484-2-00	1/A-9/A	733508-2-00	15	745114-0-00	5-6	900918-0-00	14
208135-4-00	6	304430-0-10	8	704216-2-00	8	721494-2-00	9	733508-4-00	14	745168-0-00	4	900920-0-00	14
208140-4-10	5	304431-4-13	8	704236-2-00	8	721883-0-00	4	733510-4-00	14	745317-0-00	8	900925-4-01	14
208142-3-01	5	304432-4-20	8	704309-4-00	8	722063-2-00	2-3-6-8-9	740035-0-00	12	745800-2-00	1-1/A-4-11	900926-0-00	14
208161-4-01	5	304436-0-10	8	704310-2-00	8		9/A	740053-2-00	3	745810-2-00	4-10	900927-0-00	14
208163-4-00	5	304437-0-10	8	704314-2-00	3	722123-2-00	6	741403-0-00	8	745812-0-00	5	900928-0-00	14
208164-0-00	5	304438-0-10	8	704345-2-00	14	722431-2-00	15	741405-0-00	5	745812-2-00	3-4-6-8	900929-0-01	14
208165-0-00	1	304441-0-10	8	704346-2-00	14	722452-2-00	8	741413-0-00	3	745815-2-00	3	900931-0-00	14
208179-2-00	11	304449-4-20	8	704406-0-00	7	722471-2-00	7	741413-2-00	10	746007-2-00	1-6-9	901101-0-00	14
208184-2-00	1/A	304451-0-10	8	704409-0-00	7	722480-2-00	5	741415-0-00	4	746008-0-00	3	901102-0-00	14
208196-3-00	11	304458-0-10	11	704424-2-00	14	722482-2-00	8	741415-2-00	10	746020-2-00	6	920103-0-11	12
208204-2-00	11	304462-0-20	8	704428-2-00	1	722484-2-00	8	741453-0-00	6	746208-2-00	1	920105-0-10	12
208220-0-00	5	304480-0-00	8	704536-0-00	9/A	722511-2-00	9	741535-0-00	9	746402-2-00	14	920113-0-10	12
208221-0-00	5	304482-0-00	8	704630-0-00	5	722905-2-00	14	741546-2-00	3	746409-2-00	14	920114-0-10	12
208222-0-00	5	304589-0-00	8	704808-0-00	3	724032-0-00	3	741552-0-00	5	765200-6-90	10	920128-0-00	12
208224-0-00	5	307137-0-00	1	704813-0-00	9	724460-0-00	5-8	741558-0-00	1/A	778202-0-00	4	920230-0-00	12
208231-0-00	8	307651-0-00	8	704829-0-00	3	724895-2-00	3	741657-0-00	1/A	778204-0-00	5-6	920231-0-00	12
208232-0-00	8	307739-0-00	8	704838-0-00	8	727014-2-00	5-8	741658-2-00	1	778206-0-00	10	920232-2-00	12
208233-4-00	8	309562-0-00	5	704841-0-00	3	727021-2-00	10	741675-2-00	11	778208-0-00	5	920235-0-00	12
208234-0-00	8	310167-0-00	5	704845-0-00	4	727096-0-00	6	741685-2-00	10	778236-0-00	4	920236-0-01	12
208235-0-00	8	310795-0-00	8	704848-0-00	4	727884-0-00	3	741721-2-00	8	778241-0-00	9	920241-0-01	12
208241-2-00	8	310796-0-00	8	705008-0-00	3	729012-2-00	5-8	741745-2-00	3	778401-0-00	4	920242-2-00	12
208242-2-01	8	700205-0-00	14	705029-0-00	5-7	729013-2-00	12	741936-2-00	1	778403-0-00	4	920245-4-02	12
208244-0-00	8	700206-0-00	3-12	705208-0-00	3	729022-2-00	1-9	741956-2-00	1/A-2	778405-0-00	4	920490-0-10	12
208245-0-00	8	700207-0-00	3	705230-0-00	3	729024-2-00	12/A	741963-0-00	1	778410-0-00	4	925433-0-00	15
208246-0-00	8	700212-0-00	8	705408-0-00	3	729032-2-00	3	742086-2-00	9	778414-0-00	5	990176-0-10	13
208247-0-00	8	700630-0-00	2	705970-0-00	9	729034-2-00	5-15	742457-2-00	7	778417-0-00	3-5	990179-4-11	14
208248-0-00	8	701002-0-00	9	705975-0-00	9	729043-2-00	8	742758-0-00	7	778419-0-00	5	990183-0-13	13
208249-2-00	8	701004-0-00	3-9	705977-0-00	9/A	729051-2-00	3-5-6	742838-2-00	5	778503-0-00	5	990310-0-10	14
208310-4-00	11	701005-0-00	9/A	705982-0-00	9	729053-2-00	8	743243-2-00	4	778511-0-00	5	990311-0-10	14
208341-2-00	8	701007-0-00	3	706465-0-00	8	729054-2-00	15	743471-2-00	5-7	778522-0-00	6	990314-0-10	14
208342-2-00	8	701031-0-00	9	707283-0-00	8	729434-2-00	2	743482-2-00	8	778832-0-00	5	990316-0-11	14
300218-0-10	1/A	701051-0-00	9/A	720411-2-00	9/A	730011-2-00	3	744332-2-00	3-6	778833-0-00	5	990325-0-10	13
301586-0-10	6-9	701106-0-00	9	720431-2-00	1/A	730022-2-00	8	744334-2-00	3-5-7	778835-0-00	7	990335-0-10	9/A
301608-0-00	5	701113-0-00	4	720464-4-00	14	730023-2-00	1	744512-4-00	3	778837-0-00	5	990452-0-00	14



TAV.1

H 002022-0-05  
H 002022-1-08  
H 002048-0-06  
H 002048-1-16

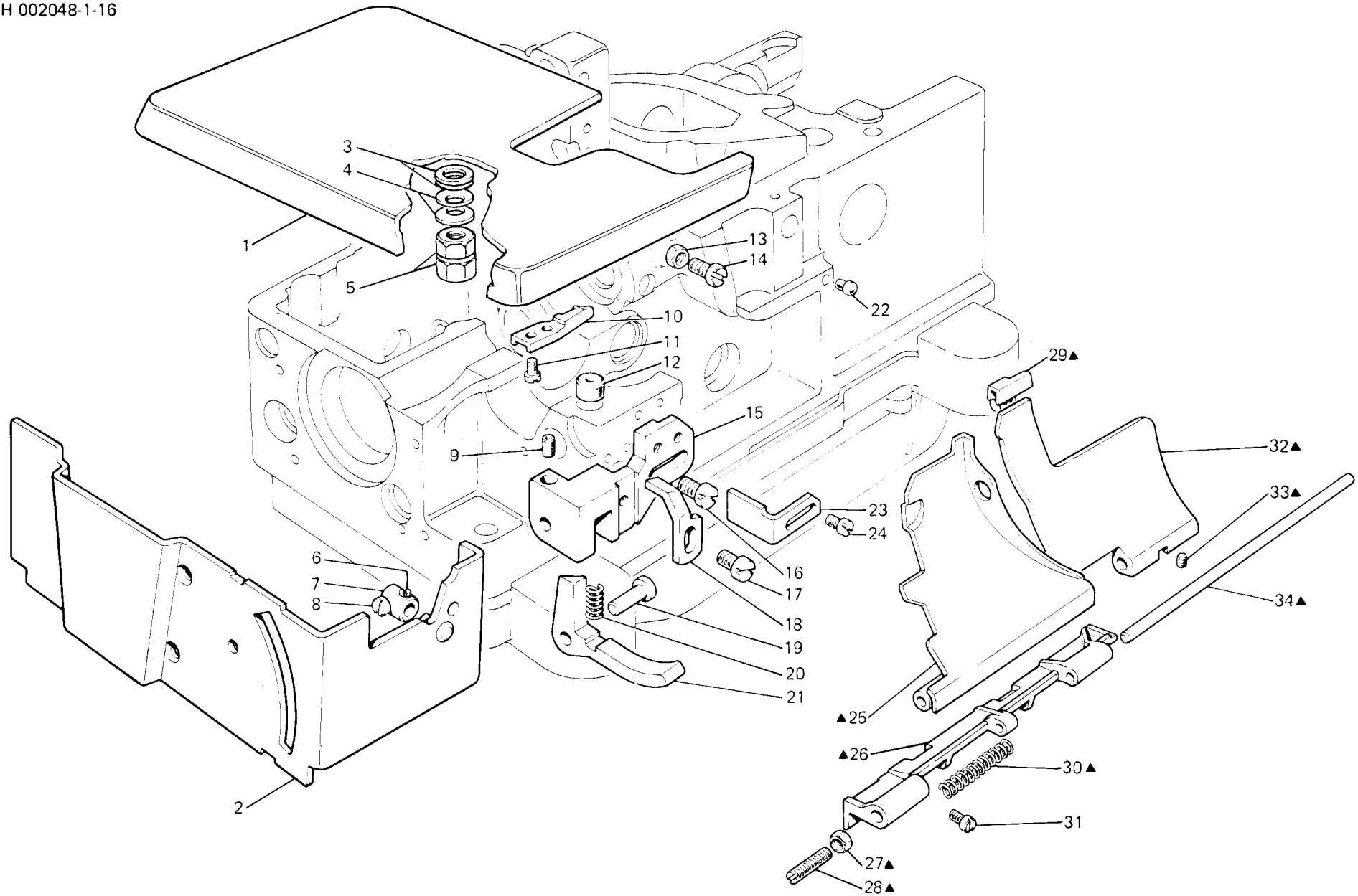




Fig. N. Abb. N.	Part. N. Piecce N. Bestell N. Pieza N.	Qt. Anzahl	DESCRIZIONE	DESCRIPTION	DESCRIPTION
▲	208060-4-00	1	sportello anteriore completo	front cover assembly	carter avant complet
1	207955-2-01	1	piano di lavoro	working plate	plan de travail
2	208022-2-00	1	carter laterale	side cover	carter latéral
3	704428-2-00	2	rondella	washer	rondelle
4	702415-0-00	2	molla a tazza	cup spring	ressort à tasse
5	208165-0-00	2	dado	nut	écrou
6	730023-2-00	1	vite	screw	vis
7	206734-2-00	1	morsetto con viti	clamp with screw	collier de serrage avec vis
8	721435-2-00	1	vite	screw	vis
9	729022-2-00	1	vite	screw	vis
10	207985-0-00	1	gancio	hook	crochet
11	741936-2-00	2	vite	screw	vis
12	207958-0-00	1	gommino	dumper	caoutchouc
13	746007-2-00	1	dado	nut	écrou
14	202214-0-11	1	vite	screw	vis
15	207981-0-00	1	supporto	support	support
16	741963-0-00	2	vite	screw	vis
17	741658-2-00	1	vite	screw	vis
18	207988-0-00	1	squadretta	bracket	équerre
19	207980-0-00	1	perno	pin	pivot
20	307137-0-00	1	molla	spring	ressort
21	207983-0-00	1	leva	lever	levier
22	207856-0-00	1	gommino	dumper	caoutchouc
23	207984-0-00	1	squadretta	bracket	équerre
24	721412-2-00	2	vite	screw	vis
25	208080-2-00	1	sportello scorrevole	sliding cover	couvercle coulissant
26	206756-0-01	1	cerniera	hinge	charnière
27	746208-2-00	1	dado	nut	écrou
28	206769-0-10	1	vite di regolazione	adjustment screw	vis de réglage
29	206764-0-00	1	zoccolo	block	socle
30	206768-0-00	1	molla	spring	ressort
31	721443-2-00	4	vite	screw	vis
32	207858-0-00	1	sportello ribaltabile	cover	couvercle
33	745800-2-00	1	vite	screw	vis
34	206767-0-00	1	perno	pin	pivot



H 002022-0-05  
H 002022-1-08  
H 002048-0-06  
H 002048-1-16

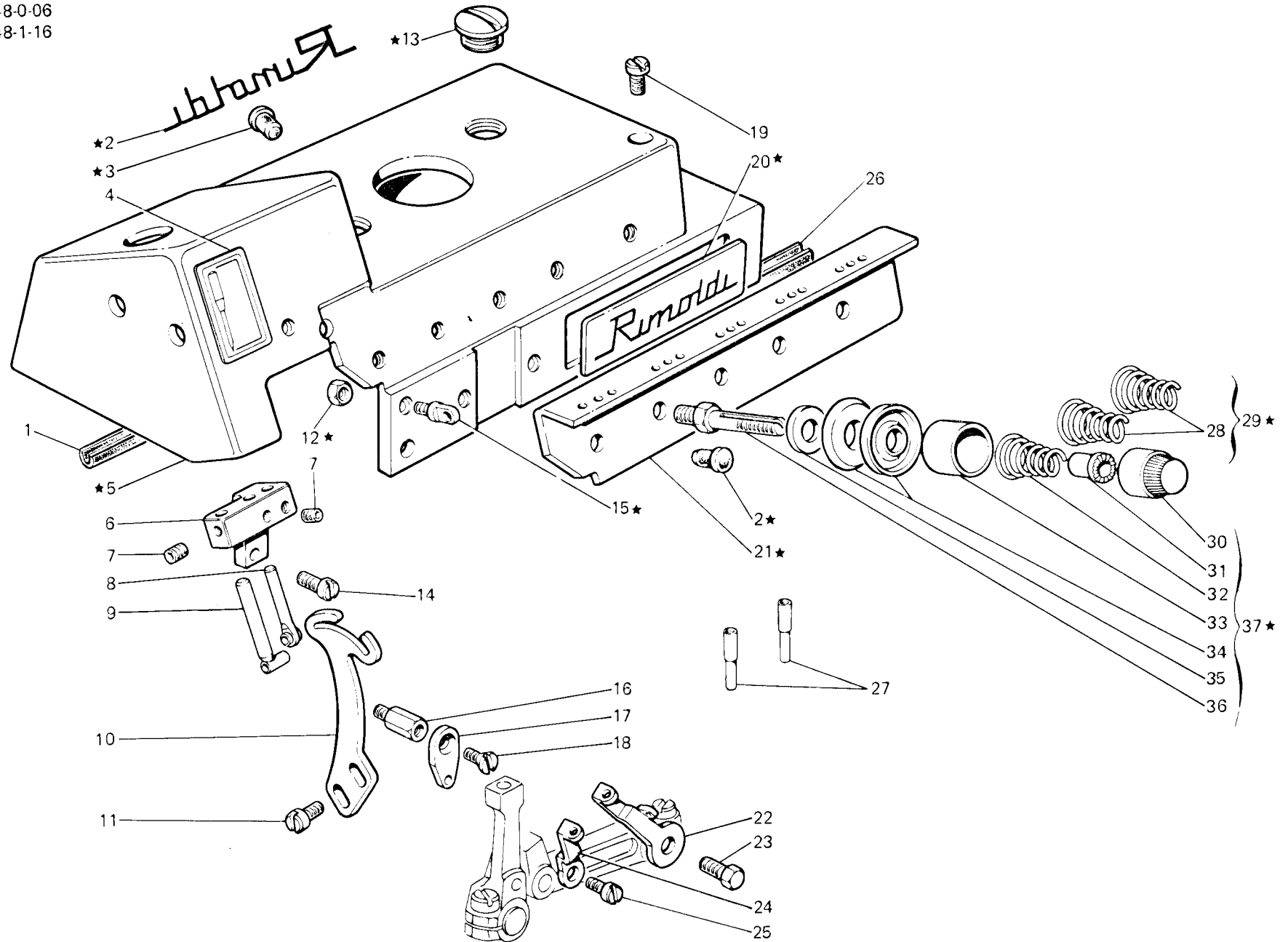


Fig. N. Abb. N.	Part. N. Piecce N. Bestell N. Pieza N.	Qt. Anzahl	DESCRIZIONE	DESCRIPTION	DESCRIPTION
★	208100-4-00	1	coperchio superiore completo	upper cover assembly	couvercle supérieur complet
1	208091-0-00	1	guarnizione	gasket	garniture
2	100305-0-10	1	decalcomania	décalcomania	décalcomanie
3	207893-0-00	4	tappo	plug	bouchon
4	788001-0-01	1	decalcomania sist. aghi	needle syst. decalcomania	décalcomanie syst. aiguille
5	207910-0-00	1	coperchio superiore	upper cover	couvercle supérieur
6	207916-0-00	1	supporto passafili aghi	support	support
7	745800-2-00	2	vite	screw	vis
8	208184-2-00	1	passafilo completo	thread guide assembly	passé-fil complet
9	202267-2-13	1	passafilo ago	thread guide of needle	passé-fil de l'aiguille
10	207872-0-00	1	tendifilo ago	needle thread take-up	tendeur du fil aiguille
11	741558-0-00	2	vite	screw	vis
12	733503-0-00	3	dado	nut	écrou
13	207968-0-01	2	tappo	plug	bouchon
14	741956-2-00	2	vite	screw	vis
15	206711-0-00	3	passafilo	thread guide	passé-fil
16	206755-0-00	1	colonnina per passafilo	threaded tube	tube pour passé-fil
17	206812-0-00	1	passafilo crochet superiore	upper looper thread guide	passé-fil crochet supérieur
18	744631-2-00	1	vite	screw	vis
19	721484-2-00	3	vite fissa coperchio superiore	screw	vis
20	207918-0-00	1	targhetta	plate	plaque
21	207919-0-00	1	piastra passafili	thread guide plate	plaque passé-fil
22	206650-0-00	1	tendifilo crochet inferiore	thread take-up	tendeur du fil crochet inf.
23	720431-2-00	1	vite	screw	vis
24	202279-0-10	1	tendifilo	thread take-up	tendeur du fil
25	741657-0-00	1	vite	screw	vis
26	208090-0-00	1	guarnizione	gasket	garniture
27	206740-0-00	2	tubetto passafilo	thread guide pipe	tube passé-fil
28	202227-0-10	2	molla	spring	ressort
29	206341-4-00	2	tensione completa	tension assembly	tension compl.
30	202558-2-01	3	pomolo	knob	pommeau
31	202229-0-10	3	bussola	bush	bague
32	202228-0-10	1	molla	spring	ressort
33	202556-0-01	3	scodellino	cup	cuvette
34	300218-0-10	6	disco tensione	tension disc	disque tension
35	206754-0-00	3	rondella	washer	rondelle
36	206747-0-01	3	perno	pin	pivot
37	206342-4-00	1	tensione completa	tension assembly	tension compl.

TAV. 2

H 002014-0-02  
H 002014-1-04  
H 002014-1-13

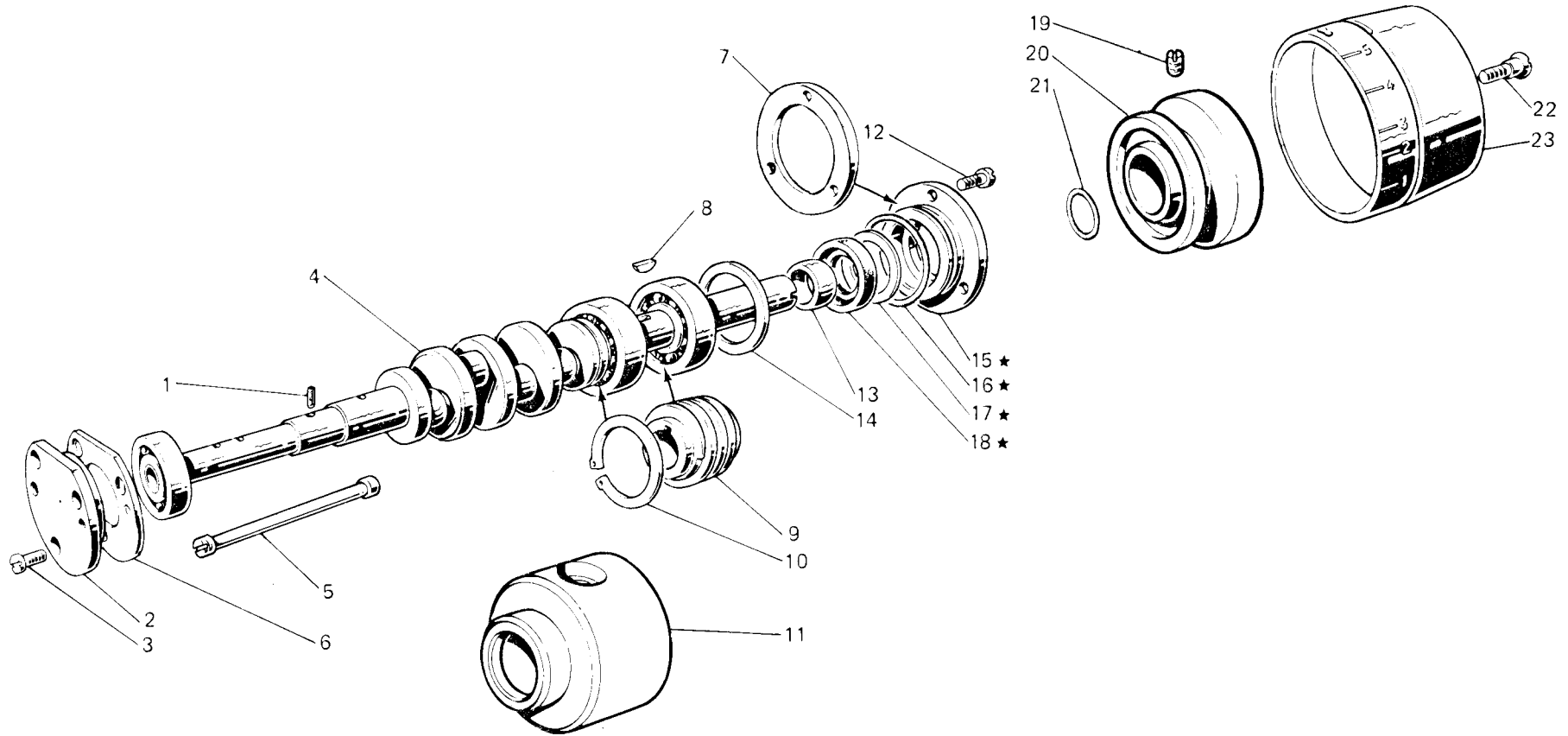


Fig. N. Abb. N.	Part. N. Piecce N. Bestell N. Pieza N.	Qt. Anzahl	DESCRIZIONE	DESCRIPTION	DESCRIPTION
★	206697-4-01	1	gruppo flangia con anelli	flange with ring assembly	groupe flasque avec anneau
1	206708-0-00	1	stoppino	wick	mèche
2	206680-0-01	1	flangia sinistra	left flange	flasque gauche
3	741956-2-00	3	vite	screw	vis
4	206705-4-01	1	albero princ. con cuscinetti	main shaft	arbre principal
5	206974-0-00	1	limitatore olio	oil limiter	limiteur huile
6	206543-0-01	1	guarnizione	gasket	garniture
7	206544-0-00	1	guarnizione	gasket	garniture
8	204122-0-10	1	chiavetta	key	clavette
9	206556-0-02	1	vite senza fine	worm screw	vis sans fin
10	202386-0-10	1	anello elastico	spring ring	anneau ressort
11	206682-0-01	1	bussola	bush	bague
12	722063-2-00	3	vite	screw	vis
13	206692-0-00	1	distanziale albero principale	spacer	entretoise
14	206689-0-01	1	anello compensazione	ring	anneau
15	206699-0-01	1	flangia	flange	flasque
16	701133-0-00	1	anello di tenuta	retainer ring	bague d'étanchéité
17	206693-0-00	1	rondella	washer	rondelle
18	700630-0-00	1	anello di tenuta	retainer ring	bague d'étanchéité
19	729434-2-00	2	vite fissa volante	screw	vis
20	207087-2-00	1	volantino con viti	handwheel with screw	volant avec vis
21	701116-0-00	1	anello di tenuta	retainer ring	bague d'étanchéité
22	202492-0-10	1	vite	screw	vis
23	206679-0-00	1	coperchio volante	handwheel cover	couvercle volant

TAV. 3

H 002010-0-05  
 H 002010-1-69  
 H 002050-0-00  
 H 002050-1-03

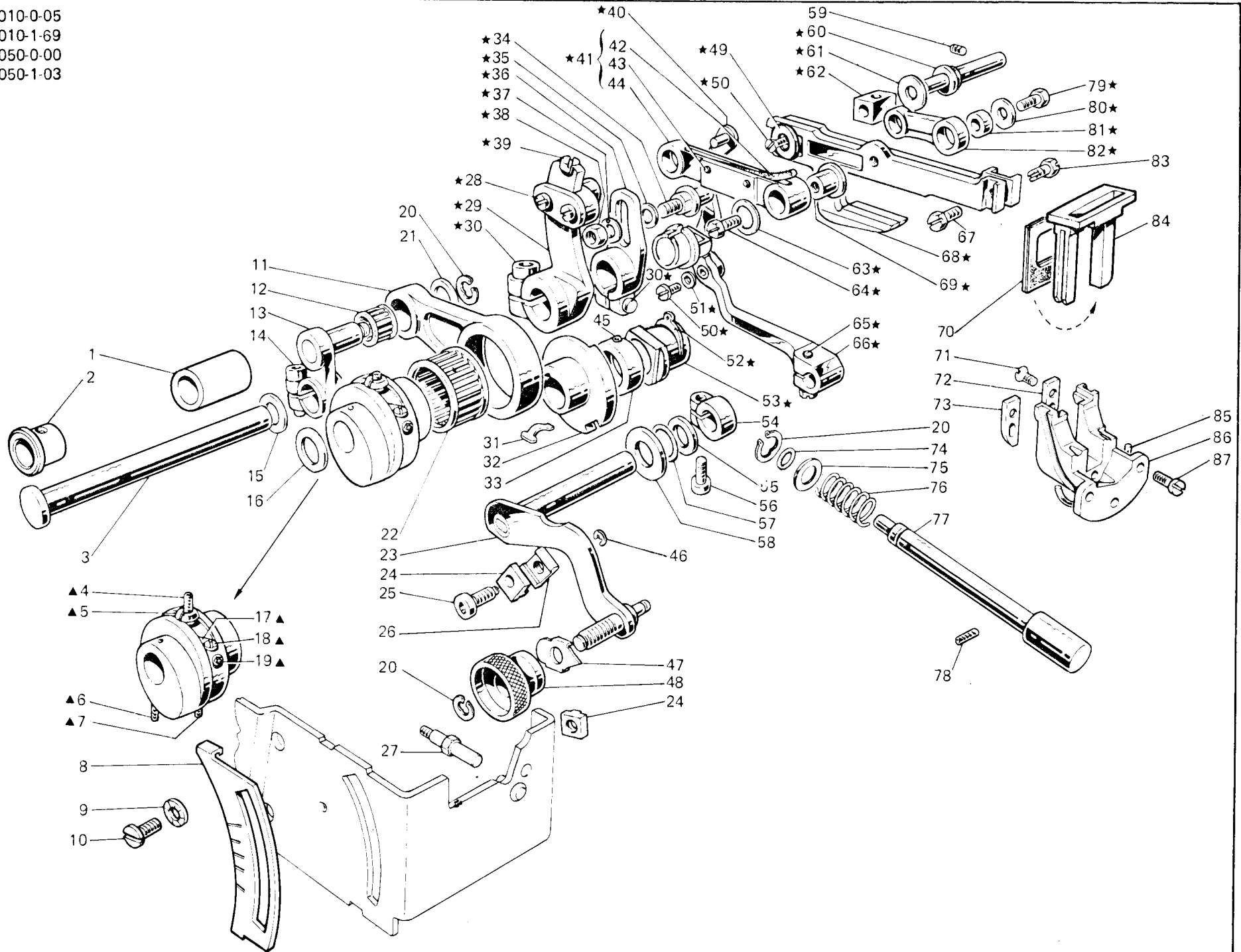


Fig. N. Abb. N.	Part. N. Bestell N. Piecze N. Pieza N.	Qt. Anzahl	DESCRIZIONE	DESCRIPTION	DESCRIPTION
★	208097-4-00	1	gruppo comando slitta	slide control assembly	groupe commande glissière
▲	207950-4-00	1	gruppo eccentr. regol. trasporto	eccentric assembly	groupe excentrique
1	206594-0-00	1	bussola	bush	bage
2	206595-0-00	1	bussola	bush	bage
3	206593-0-00	1	contralbero trasporto	transport countershaft	axe transport
4	729051-2-00	1	vite	screw	vis
5	206603-0-10	1	fermo eccentrico	eccentric retainer	pièce blocage excentrique
6	745815-2-00	1	vite	screw	vis
7	727884-0-00	1	vite	screw	vis
8	206797-0-00	1	piastrina per indice	plate	plaque
9	703405-0-00	4	rondella elastica	spring washer	rondelle élastique
10	724895-2-00	4	vite	screw	vis
11	206599-0-01	1	biella comando trasporto	transport con-rod	bielle commande transport
12	201358-0-10	1	gabbia a rullini	needles cage	cage à aiguilles
13	206598-3-00	1	braccio a manovella con vite	crank arm with screw	bras à manivelle avec vis
14	744334-2-00	1	vite	screw	vis
15	704841-0-00	1	rondella	washer	rondelle
16	206602-0-00	1	rondella	washer	rondelle
17	202412-0-11	1	lardone	gib	lardon
18	202473-0-11	2	vite	screw	vis
19	730011-2-00	2	vite	screw	vis
20	700207-0-00	3	anello elastico	spring ring	anneau ressort
21	206546-0-00	1	rondella	washer	rondelle
22	202385-0-10	1	gabbia a rullini	needles cage	cage à aiguilles
23	206790-2-10	1	leva	lever	levier
24	206875-0-00	2	vite	screw	vis
25	206795-0-00	2	arresto reg. interno	stopping	butée
26	206733-0-01	1	vite fissa carter laterale	screw	vis
27	741546-2-00	2	vite	screw	vis
28	206592-3-00	1	manovella trasp. con viti	transport crank with screw	manivelle transport avec vis
29	744332-2-00	2	vite	screw	vis
30	206872-0-00	1	molla	spring	ressort
31	206605-0-01	1	eccentrico	eccentric	excentrique
32	206606-2-00	1	anello di rasamento	shim	bage
33	202063-0-10	1	spina	pin	goupille
34	704808-0-00	1	rondella	washer	rondelle
35	206584-2-00	1	braccio manovella	crank arm	bras manivelle
36	206580-2-00	1	rondella con spina	washer with pin	rondelle avec goupille
37	746008-0-00	1	dado	nut	écrou
38	741413-0-00	1	vite	screw	vis
39	207724-2-00	1	giunto	joint	joint
40	206615-4-00	1	biellino completo	con-rod assembly	petite-bielle complète
41	778417-0-00	1	stoppino	wick	mèche
42	200490-0-00	2	spillo	needle	épingle
43	206587-0-01	1	biellino	con-rod	petite-bielle
44	745812-2-00	2	vite	screw	vis
45	700206-0-00	2	anello elastico	spring ring	anneau ressort
46	206796-0-00	1	indice	index	indice
47	206798-0-00	1	bottone	button	bouton

TAV. 3

H 002010-0-05  
 H 002010-1-69  
 H 002050-0-00  
 H 002050-1-03

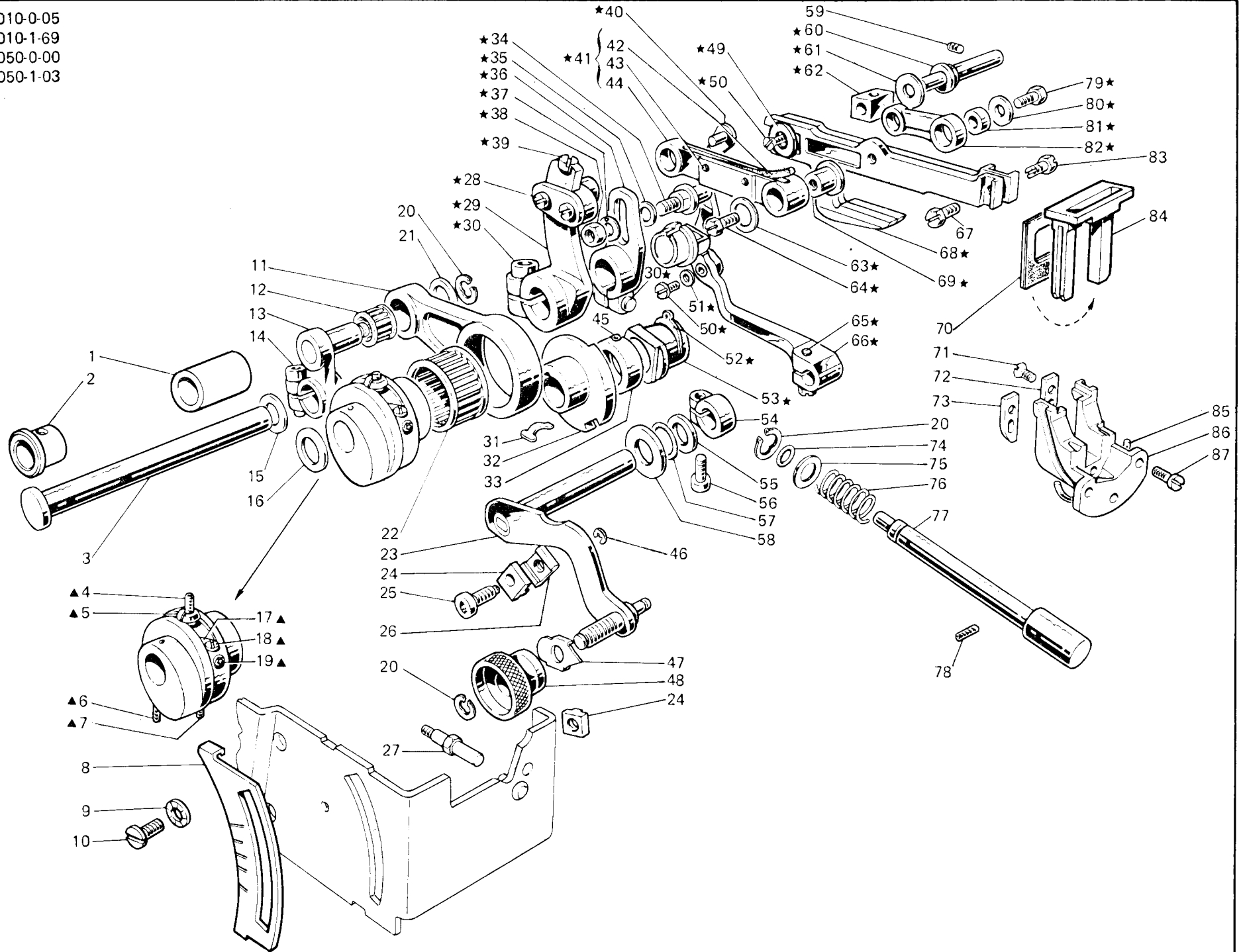




Fig. N. Abb. N.	Part. Piece N. Bestell N. Pieza N.	Qt. Anzahl	DESCRIZIONE	DESCRIPTION	DESCRIPTION
48	206794-0-00	1	arresto regolabile esterno	external retainer	butée réglable externe
49	202475-0-10	1	rondella	washer	rondelle
50	724032-0-00	2	vite	screw	vis
51	207719-0-00	1	rondella	washer	rondelle
52	201610-0-01	1	anello elastico	spring ring	anneau ressort
53	206617-0-01	1	blocchetto	block	bloc
54	100620-2-10	1	morsetto con vite	clamp with screw	collier de serrage avec vis
55	704829-0-00	1	rondella	washer	rondelle
56	741745-2-00	1	vite	screw	vis
57	701007-0-00	1	anello di tenuta	retainer ring	bague d'étanchéité
58	705230-0-00	1	rondella	washer	rondelle
59	202478-0-10	1	vite	screw	vis
60	206613-0-00	1	perno eccentrico	eccentric pin	pivot excentrique
61	705408-0-00	1	rondella	washer	rondelle
62	202033-0-10	1	blocchetto	block	bloc
63	705008-0-00	1	rondella	washer	rondelle
64	206588-0-00	1	vite	screw	vis
65	740053-2-00	1	vite	screw	vis
66	207711-2-10	1	braccio reg. differenziale	differential arm	bras regl. différentiel
67	202489-0-10	1	vite	screw	vis
68	207942-3-00	1	gruppo slitta	slide assembly	groupe glissière
69	206586-0-01	1	bussola per biellino	bush	bague
70	207944-0-00	2	guarnizione raschia olio	gasket	garniture
71	744512-4-00	2	vite	screw	vis
72	207947-0-00	1	piastrina	plate	plaque
73	207945-0-00	1	piastrina	plate	plaque
74	701004-0-00	1	anello	ring	anneau
75	704314-2-00	1	rondella	washer	rondelle
76	202408-0-10	1	molla	spring	ressort
77	206618-0-10	1	pulsante reg. punto	push-button	poussoir
78	729032-2-00	1	vite	screw	vis
79	202490-0-10	1	vite	screw	vis
80	705208-0-00	1	rondella	washer	rondelle
81	202032-0-11	1	bussolina	bush	bague
82	206583-0-00	1	biellino	con-rod	petite bielle
83	202488-0-10	1	vite	screw	vis
84	207946-0-01	1	telaio raschia olio	oil scraper frame	râcheur huile
85	207948-0-00	1	guarnizione	gasket	garniture
86	207943-2-00	1	guida slitta	slide guide	guide coulissant
87	722063-2-00	3	vite	screw	vis

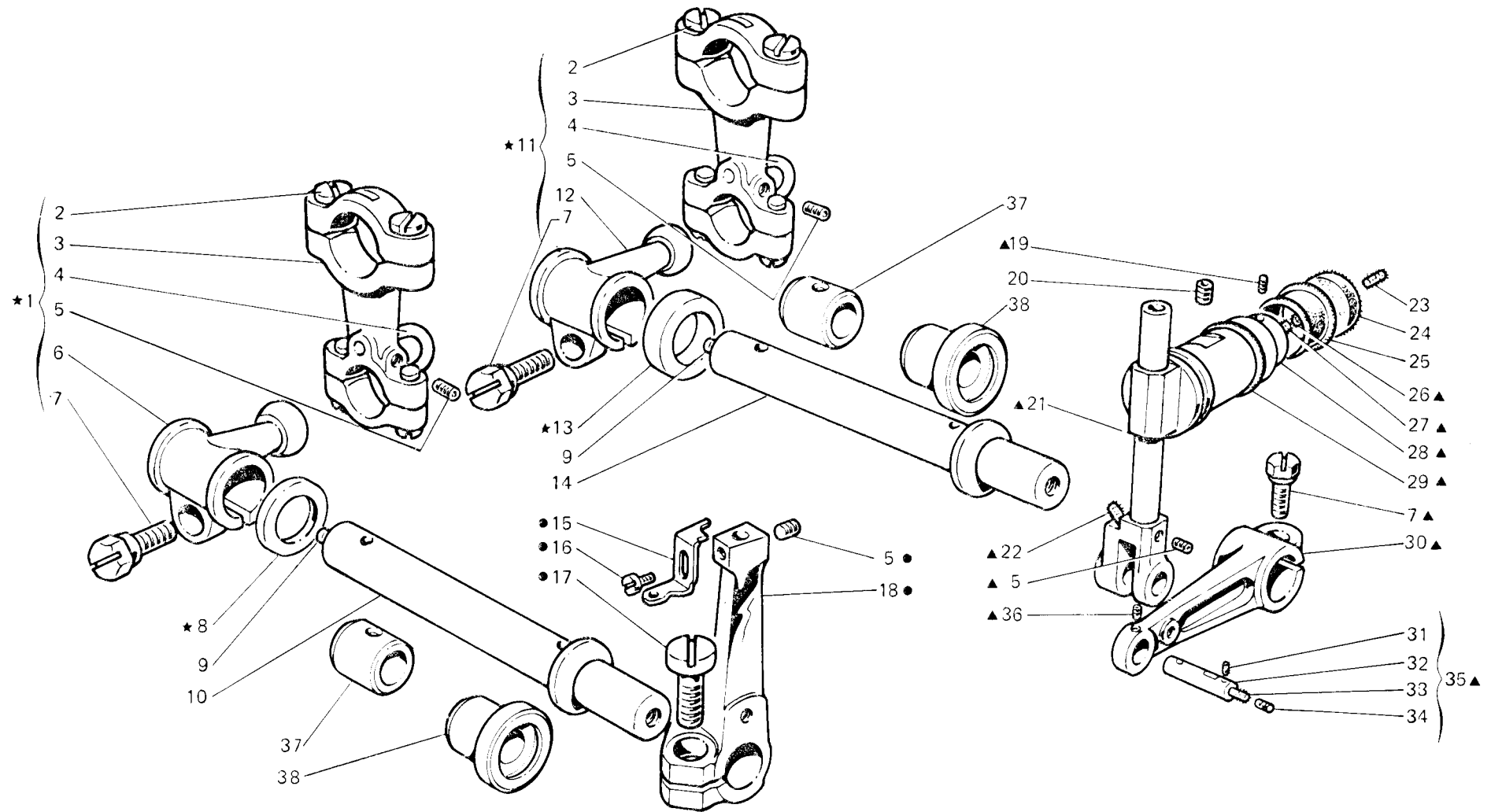


Fig. N. Abb. N.	Part. N. Piecce N. Bestell N. Pieza N.	Qt. Anzahl	DESCRIZIONE	DESCRIPTION	DESCRIPTION
★	206400-4-00	1	gruppo manicotti com. crochet	looper control coupling ass.	groupe manchon comm. crochet
▲	206415-4-00	1	gruppo comando crochet sup.	upper looper control assembly	groupe commande crochet sup.
●	208039-4-00	1	gruppo porta crochet inferiore	lower looper assembly	groupe porte crochet inférieur
1	206453-4-00	1	gruppo manicotto con biella	coupling assembly with con-rod	groupe manchon avec bielle
2	743243-2-00	8	vite per biella	screw	vis
3	202071-2-20	2	biella con viti	con-rod with screw	bielle avec vis
4	206643-0-01	2	cavallotto	coupling	cavalier
5	745812-2-00	4	vite	screw	vis
6	206659-2-01	1	manicotto	coupling	manchon
7	201128-0-10	3	vite	screw	vis
8	704845-0-00	1	rondella	washer	rondelle
9	206695-0-00	2	tappo per albero	plug for shaft	bouchon pour arbre
10	207096-2-00	1	albero crochet inferiore	shaft lower looper	arbre crochet inférieur
11	206452-4-00	1	gruppo manicotto con biella	coupling with con-rod	groupe manchon avec bielle
12	206658-2-02	1	manicotto	coupling	manchon
13	704848-0-00	1	rondella	washer	rondelle
14	207095-2-00	1	albero crochet superiore	upper looper shaft	arbre crochet supérieur
15	208015-0-00	1	squadretta	bracket	équerre
16	741415-0-00	1	vite	screw	vis
17	721883-0-00	1	vite	screw	vis
18	206654-2-10	1	porta crochet inf.	lower looper holder	porte crochet inférieur
19	745800-2-00	1	vite	screw	vis
20	745168-0-00	1	vite	screw	vis
21	206410-3-00	1	guida oscillante	oscillating guide	guide oscillant
22	778403-0-00	1	stoppino	wick	mèche
23	778236-0-00	1	stoppino	wick	mèche
24	206686-0-00	1	disco lubrificazione guida	disc	disque
25	202720-0-00	1	paraolio	oil retainer	pare-huile
26	778405-0-00	1	stoppino	wick	mèche
27	778410-0-00	1	stoppino	wick	mèche
28	202062-2-10	1	anello con vite	ring with screw	anneau avec vis
29	701113-0-00	1	anello di tenuta	circlip	circlip
30	206652-2-01	1	braccio	arm	bras
31	778202-0-00	4	stoppino	wick	mèche
32	202086-0-12	1	spina	pin	goupille
33	778401-0-00	1	stoppino	wick	mèche
34	745002-0-00	1	vite	screw	vis
35	206645-4-01	1	spina completa	pin assembly	goupille compl.
36	745810-2-00	1	vite	screw	vis
37	206651-0-00	2	bussola	bush	bague
38	202065-0-20	2	bussola	bush	bague

TAV.5

H 002006-0-03  
H 002006-1-06  
H 002006-1-16

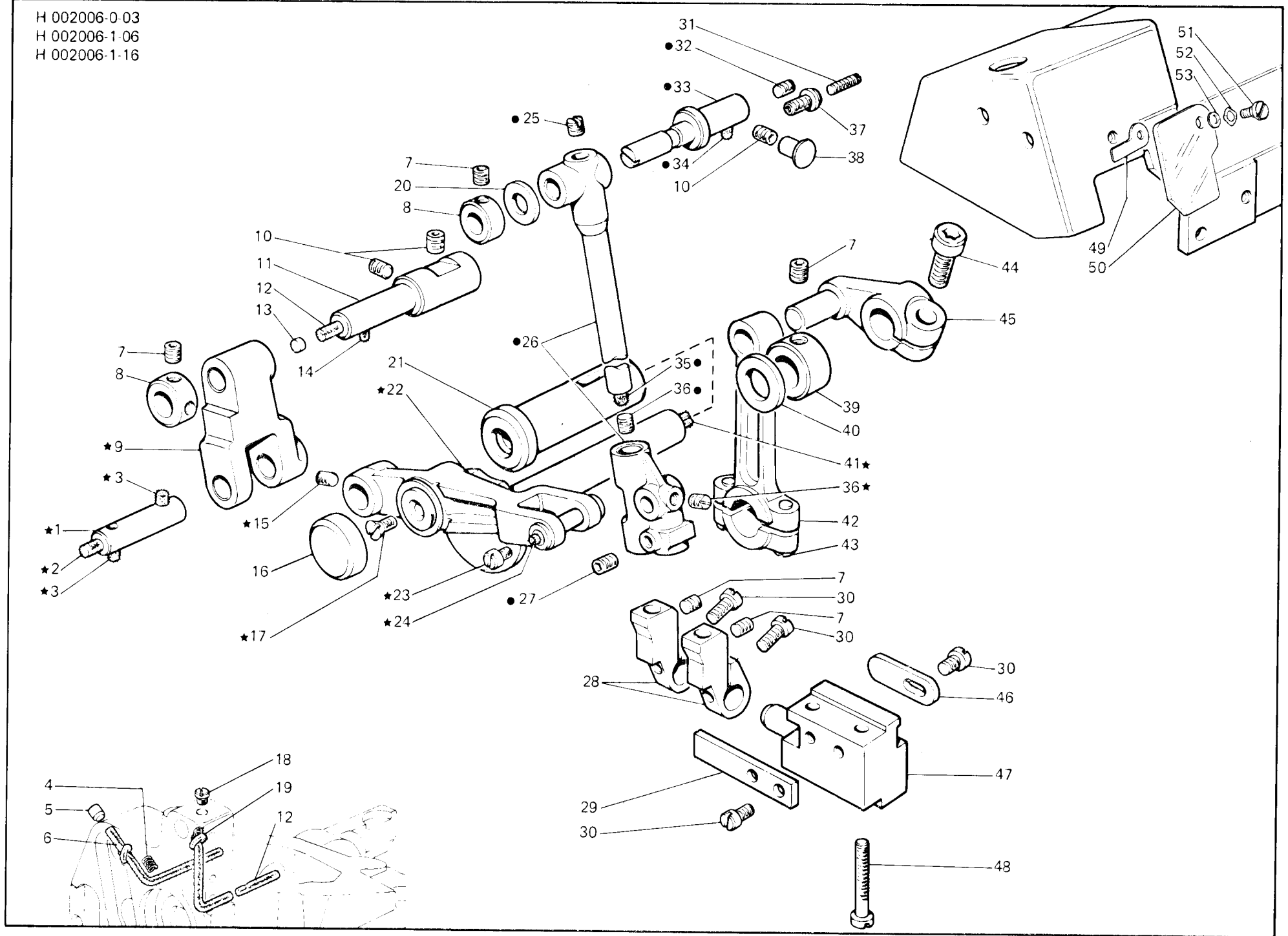


Fig. N. Abb. N.	Part. N. Piece N. Bestell N. Pieza N.	Qt. Anzahl	DESCRIZIONE	DESCRIPTION	DESCRIPTION
★	208140-4-10	1	cinematismo comando ago (con fig. ●)	needle control assembly (with fig. ●)	cinématisme comm. aiguille (avec fig. ●)
●	208161-4-01	1	slitta con barra completa	slide with bar assembly	glissière avec barre complète
1	207930-0-01	1	spina	pin	goupille
2	778414-0-00	1	stoppino	wick	mèche
3	778204-0-00	3	stoppino	wick	mèche
4	208164-0-00	1	molla	spring	ressort
5	301608-0-00	1	tappo	plug	bouchon
6	778832-0-00	1	stoppino	wick	mèche
7	745812-0-00	7	vite	screw	vis
8	207692-2-00	2	anello di rasamento con viti	ring with screw	anneau avec vis
9	207932-0-10	1	leva	lever	levier
10	729034-2-00	3	vite	screw	vis
11	208163-4-00	1	perno con stoppini e tappo	pin with wick and plug	pivot avec mèche et bouchon
12	778417-0-00	2	stoppino	wick	mèche
13	206521-0-00	1	tappo	plug	bouchon
14	778511-0-00	2	stoppino	wick	mèche
15	745114-0-00	1	vite	screw	vis
16	206533-0-00	1	coperchio per leva	cover for lever	couvercle pour levier
17	724460-0-00	1	vite	screw	vis
18	742838-2-00	1	vite	screw	vis
19	778833-0-00	1	stoppino	wick	mèche
20	309562-0-00	1	rondella	washer	rondelle
21	206538-0-10	1	bussola	bush	bague
22	208142-3-01	1	gruppo leva con spina	lever with pin assembly	groupe levier avec goupille
23	741405-0-00	1	vite	screw	vis
24	778208-0-00	1	stoppino	wick	mèche
25	310167-0-00	1	vite	screw	vis
26	207922-3-10	1	slitta con barra	slide with bar	glissière avec barre
27	729012-2-00	1	vite	screw	vis
28	207998-2-00	2	porta salva ago e spingi asola	front and rear needle guard holder	porte protège-aiguille et pare-boucle
29	207991-0-00	1	piastrina	plate	plaque
30	741552-0-00	5	vite	screw	vis
31	729051-2-00	1	vite	screw	vis
32	727014-2-00	1	vite	screw	vis
33	207927-0-01	1	perno	pin	pivot
34	778419-0-00	1	stoppino	wick	mèche
35	778503-0-00	1	stoppino	wick	mèche
36	745002-0-00	2	vite	screw	vis
37	206603-0-10	1	vite di fermo	screw	vis
38	207574-0-00	1	tappo	plug	bouchon
39	206606-2-00	1	anello di rasamento con vite	ring	anneau
40	705029-0-00	1	rondella	washer	rondelle
41	778837-0-00	1	stoppino	wick	mèche
42	206549-2-10	1	biella con viti	con-rod with screw	bielle avec vis
43	743471-2-00	2	vite	screw	vis
44	744334-2-00	1	vite	screw	vis
45	206540-2-00	1	manovella alb. sup. con vite	crank	manivelle
46	207999-0-00	1	piastrina	plate	plaque

TAV. 5

H 002006-0-03  
H 002006-1-06  
H 002006-1-16

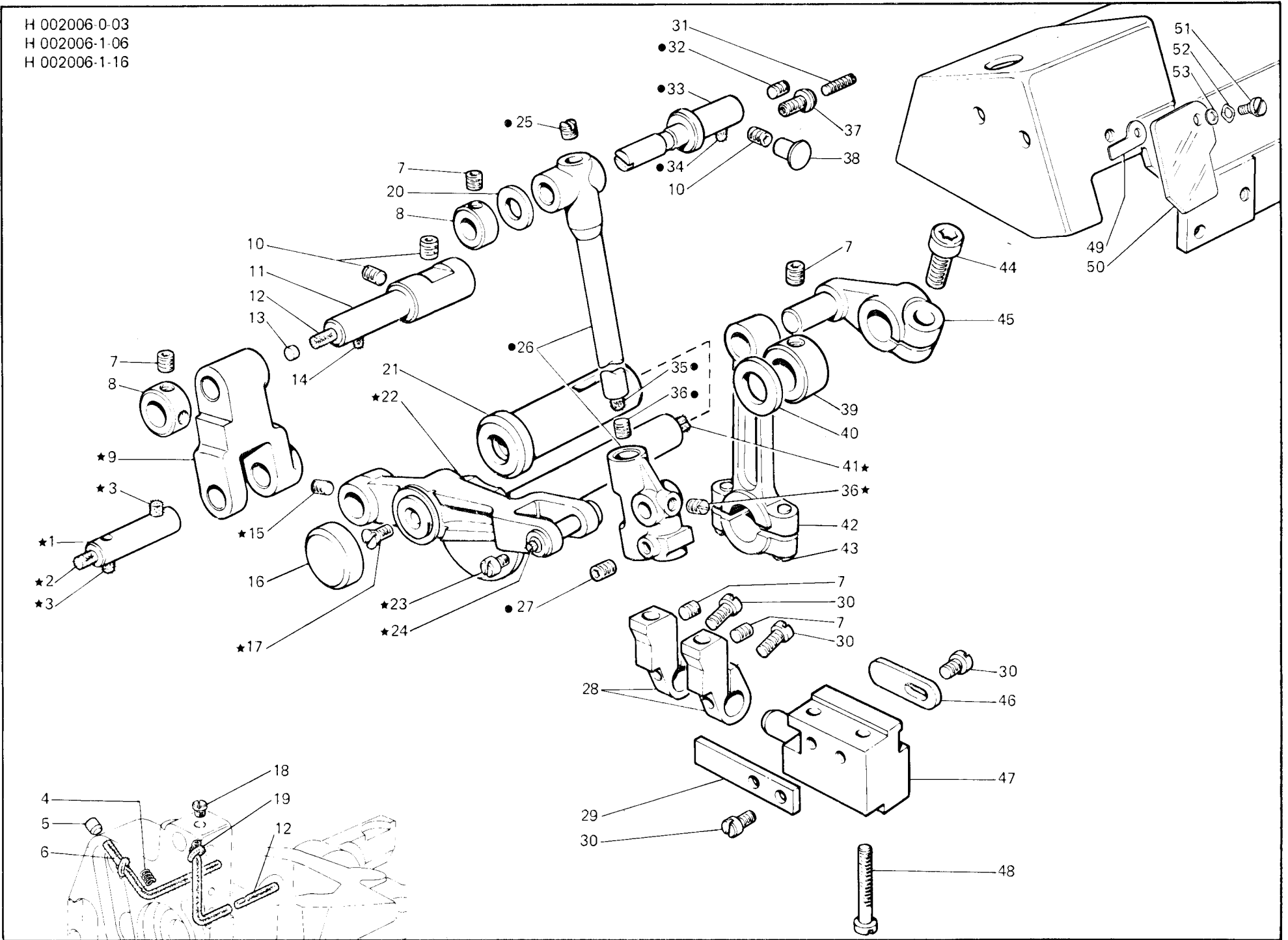


Fig. N. Abb. N.	Part. N. Piece N. Bestell N. Preza N.	Qt. Anzahl	DESCRIZIONE	DESCRIPTION	DESCRIPTION
47	207990-0-00	1	supporto salva ago	rear needle guard assembly	support protège-aiguille
48	722480-2-00	2	vite	screw	vis
49	208222-0-00	1	piastrina	plate	plaque
50	208221-0-00	1	piastrina protezione	protection plate	plaque protection
51	208224-0-00	1	vite	screw	vis
52	208220-0-00	1	anello elastico	spring ring	anneau ressort
53	704630-0-00	1	rondella	washer	rondelle

TAV.6

H 002008-0-03  
H 002008-1-55

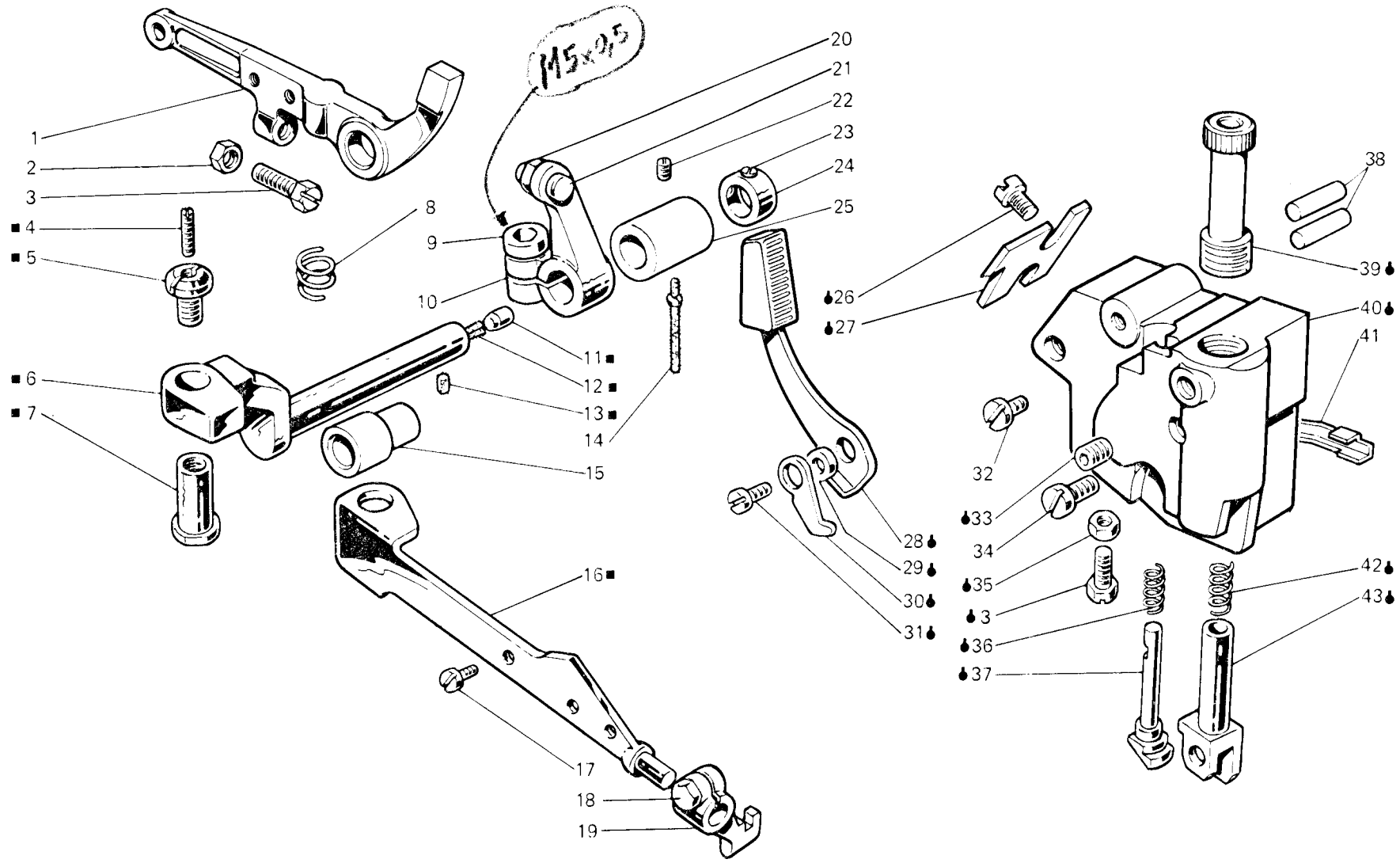




Fig. N. Abb. N.	Part. N. Pezce N. Bestell N. Pieza N.	Qt. Anzahl	DESCRIZIONE	DESCRIPTION	DESCRIPTION
●	208135-4-00	1	gruppo supporto premistoffa	presser support assembly	groupe support pied-presseur
■	207887-4-00	1	leva premistoffa con perno	presser lever	levier du pied-presseur
1	207881-2-00	1	leva alza premistoffa	lever	levier
2	733505-2-00	1	dado	nut	écrou
3	202214-0-11	2	vite	screw	vis
4	729051-2-00	1	vite	screw	vis
5	202529-0-10	1	perno di fermo	pin	pivot
6	207878-3-00	1	perno con tappo e stoppini	pin with plug and wicks	pivot avec bouchon et mèches
7	206622-0-00	1	spina	pin	goupille
8	206621-0-00	1	molla richiamo leva alza premist.	spring	ressort
9	744332-2-00	1	vite	screw	vis
10	207876-2-00	1	leva arresto premist. con viti	lever	levier
11	301586-0-10	1	pastiglia	plug	bouchon
12	778522-0-00	1	stoppino	wick	mèche
13	778204-0-00	1	stoppino	wick	mèche
14	206620-0-00	1	stoppino	wick	mèche
15	207880-0-00	1	bussola	bush	bague
16	206808-0-01	1	leva	lever	levier
17	741453-0-00	2	vite	screw	vis
18	204947-0-10	1	vite	screw	vis
19	206810-2-00	1	attacco a morsetto premist.	coupling	raccord
20	746020-2-00	1	dado	nut	écrou
21	727096-0-00	1	vite	screw	vis
22	745812-2-00	1	vite	screw	vis
23	745114-0-00	2	vite	screw	vis
24	207882-2-00	1	anello con viti	ring	anneau
25	207879-0-00	1	bussola	bush	bague
26	721434-2-00	2	vite	screw	vis
27	207965-0-00	1	arresto	stopping	butée
28	208133-2-00	1	leva	lever	levier
29	206637-0-00	1	distanziale	spacer	entretoise
30	206635-0-00	1	nasello	snug	décllic
31	722063-2-00	1	vite	screw	vis
32	722123-2-00	1	vite	screw	vis
33	202391-0-11	1	vite	screw	vis
34	206642-0-00	1	vite	screw	vis
35	746007-2-00	1	dado	nut	écrou
36	202110-0-10	1	molla	spring	ressort
37	207959-0-00	1	tirante	tie-rod	tirant
38	202371-0-10	2	spina	pin	goupille
39	207967-0-01	1	vite	screw	vis
40	207960-0-00	1	supporto	support	support
41	207962-0-00	1	guarnizione	gasket	garniture
42	203142-0-10	1	molla	spring	ressort
43	206632-2-00	1	cannotto	column	fourche

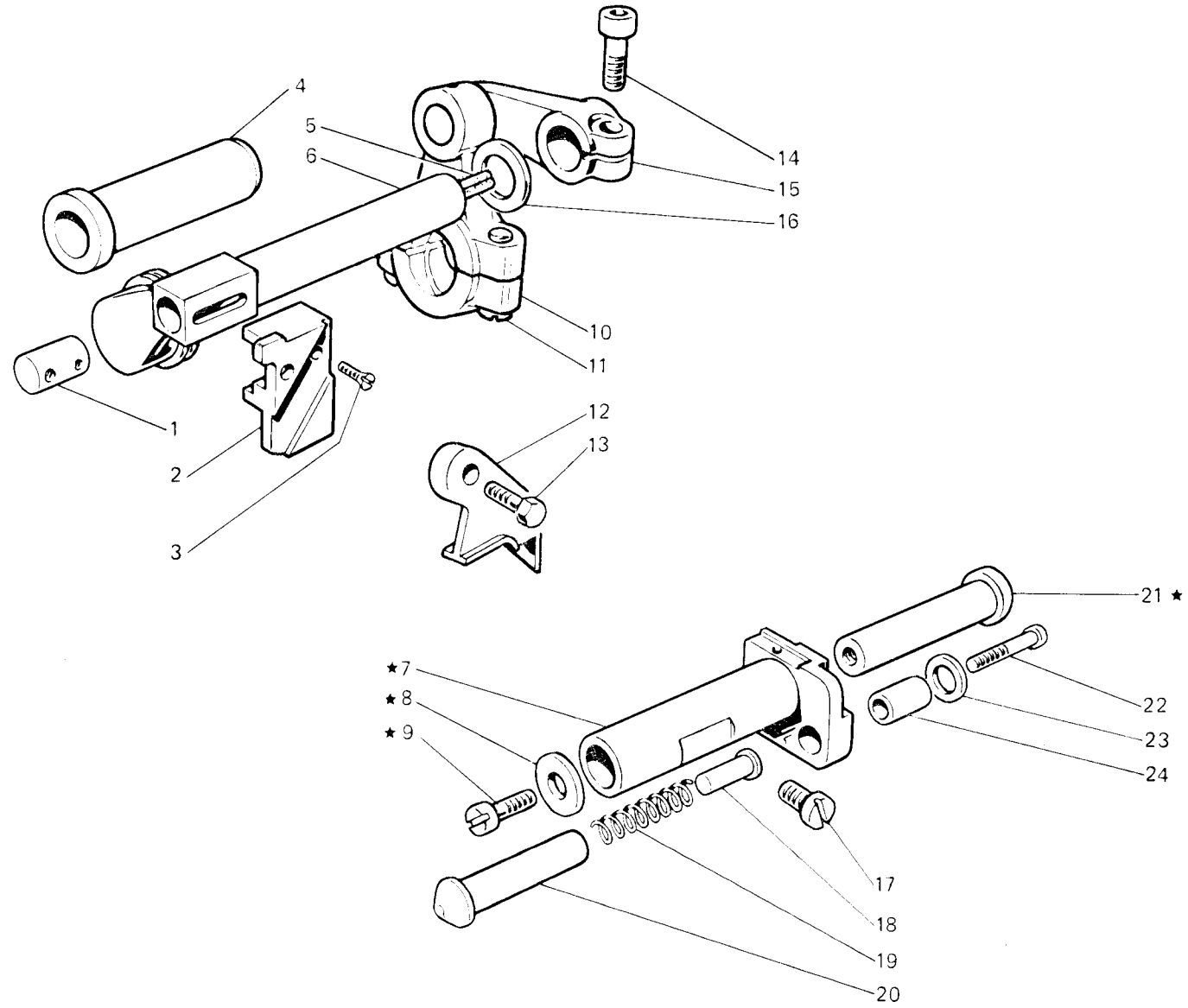


Fig. N. Abb. N.	Part. N. Pezze N. Bestell N. Pieza N.	Qr. Anzahl	DESCRIZIONE	DESCRIPTION	DESCRIPTION
★	202133-4-10	1	porta coltello inferiore compl.	lower knife holder assembly	porte couteau inférieur compl.
1	202130-0-11	1	perno	pin	pivot
2	207588-0-00	1	piacchetta	plate	plaque
3	744533-0-00	1	vite	screw	vis
4	206539-0-00	1	bussola	bush	bague
5	778835-0-00	1	stoppino	wick	mèche
6	207861-4-00	1	albero colt. sup. con stoppino	shaft	arbre
7	202132-0-10	1	porta coltello inferiore	lower knife holding	porte couteau inférieur
8	704409-0-00	1	rondella	washer	rondelle
9	742457-2-00	1	vite	screw	vis
10	206578-2-00	1	biella con viti	con-rod with screw	bielle avec vis
11	743471-2-00	2	vite	screw	vis
12	207589-0-00	1	staffa	bracket	bride
13	207421-0-00	1	vite	screw	vis
14	744334-2-00	1	vite	screw	vis
15	206574-2-00	1	manovella alb. coltello sup.	crank for upper knife shaft	manivelle arbre couteau sup.
16	705029-0-00	1	rondella	washer	rondelle
17	742758-0-00	1	vite	screw	vis
18	206758-0-00	1	puntalino	pin	pivot
19	202128-0-10	1	molla	spring	ressort
20	206757-0-00	1	bussola	bush	bague
21	202134-0-11	1	perno	pin	pivot
22	722471-2-00	1	vite	screw	vis
23	704406-0-00	1	rondella	washer	rondelle
24	202129-0-10	1	bussola	bush	bague

H 002030-0-00

H 002030-1-00

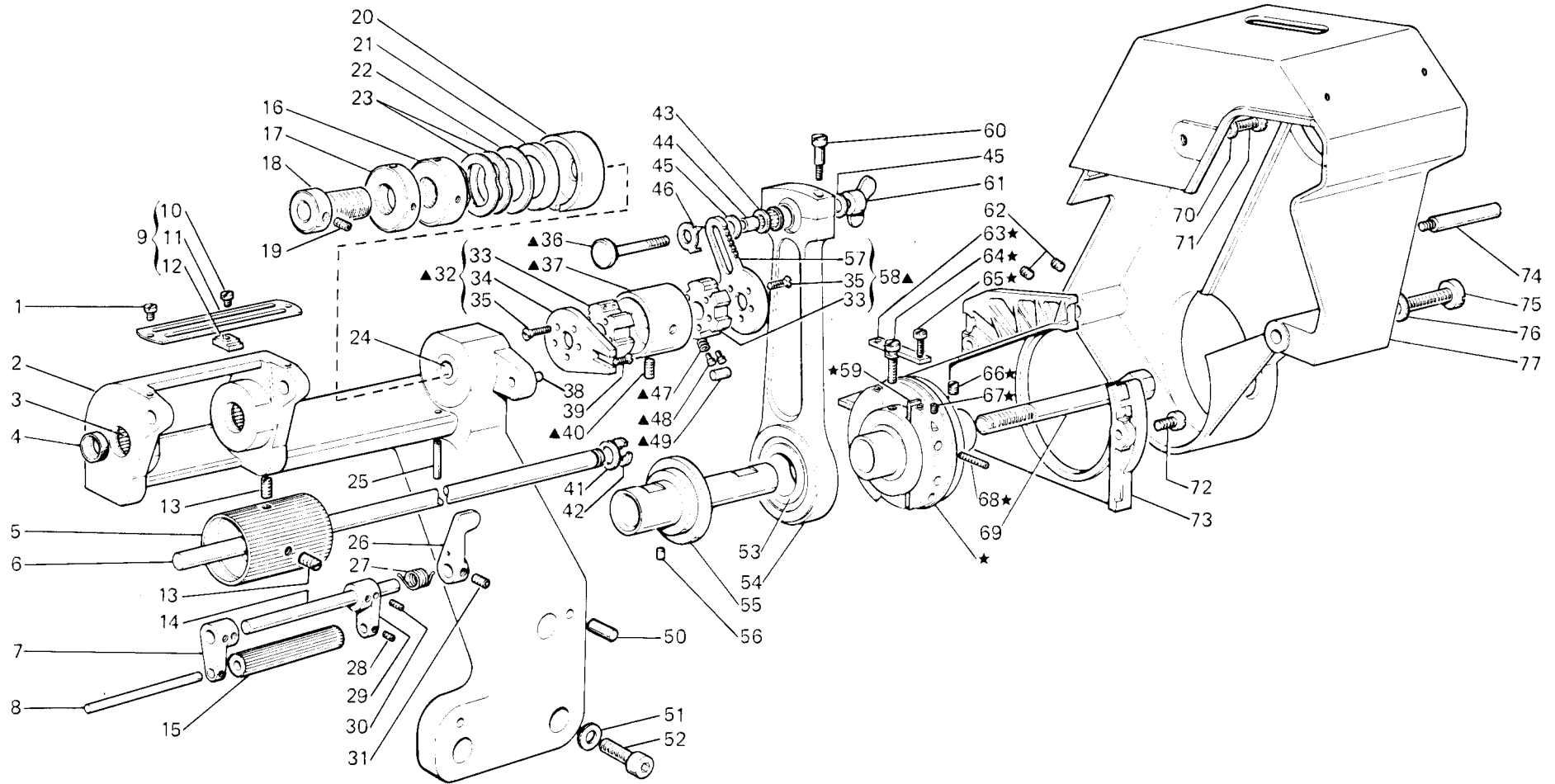


Fig. N. Abb. N.	Part. N. Pezza N. Bestell. N. Pieza N.	Qt. Anzahl	DESCRIZIONE	DESCRIPTION	DESCRIPTION
★	304449-4-20	1	eccentrico regolabile compl.	eccentric assembly	excentrique compl.
▲	304431-4-13	1	frizione completa	clutch assembly	friction complète
1	721412-2-00	2	vite	screw	vis
2	208242-2-01	1	supporto con rullini	support with roller	support avec rouleau
3	307739-0-00	2	boccola a rullini	bearing	roulement
4	307651-0-00	4	anello di tenuta	retainer ring	bague d'étanchéité
5	208341-2-00	1	rullo con viti	roller with screw	rouleau avec vis
6	207094-0-01	1	albero	shaft	arbre
7	304438-0-10	1	spalla sinistra	left support	support gauche
8	208235-0-00	1	perno	pin	pivot
9	208233-4-00	1	piastrina completa	plate assembly	plaquette compl.
10	741403-0-00	4	vite	screw	vis
11	208232-0-00	1	piastrina	plate	plaquette
12	203949-0-10	4	cursore	slider	curseur
13	729053-2-00	2	vite	screw	vis
14	208234-0-00	1	perno	pin	pivot
15	208342-2-00	1	rullino	roller	rouleau
16	208248-0-00	1	ghiera frizione	clutch ring nut	collier friction
17	208246-0-00	1	anello	ring	anneau
18	208249-2-00	1	manicotto con vite	coupling with screw	manchon avec vis
19	730022-2-00	1	vite	screw	vis
20	208247-0-00	1	coperchio	cover	couvercle
21	208245-0-00	1	disco frizione	clutch disc	disque friction
22	208244-0-00	1	rondella	washer	rondelle
23	208231-0-00	2	anello elastico	spring ring	anneau ressort
24	207103-0-00	2	bussola	bush	bague
25	707283-0-00	1	spina elastica	split pin	goupille réglable
26	304424-0-10	1	leva	lever	levier
27	304441-0-10	1	molla	spring	ressort
28	745002-0-00	2	vite	screw	vis
29	304437-0-10	1	spalla destra	right support	support droit
30	727014-2-00	4	vite	screw	vis
31	745812-2-00	2	vite	screw	vis
32	304432-4-20	1	settore con flangia destra	sector with right flange	secteur avec flasque droite
33	304589-0-00	2	settore	sector	secteur
34	203928-0-20	1	flangia	flange	flasque
35	724460-0-00	10	vite	screw	vis
36	304086-0-10	1	perno	pin	pivot
37	304430-0-10	1	corpo frizione	clutch body	corps friction
38	304482-0-00	1	spina	pin	goupille
39	744553-0-00	1	vite	screw	vis
40	729043-2-00	2	vite	screw	vis
41	704838-0-00	1	rondella	washer	rondelle
42	700212-0-00	1	anello elastico	spring ring	anneau ressort
43	201358-0-10	1	gabbia a rulli	needles cage	cage à aiguilles
44	304436-0-10	1	anello	ring	anneau
45	704216-2-00	2	rondella	washer	rondelle
46	304073-0-10	1	indice	index	indice
47	310795-0-00	20	molla	spring	ressort

TAV. 8

H 002030-0-00

H 002030-1-00

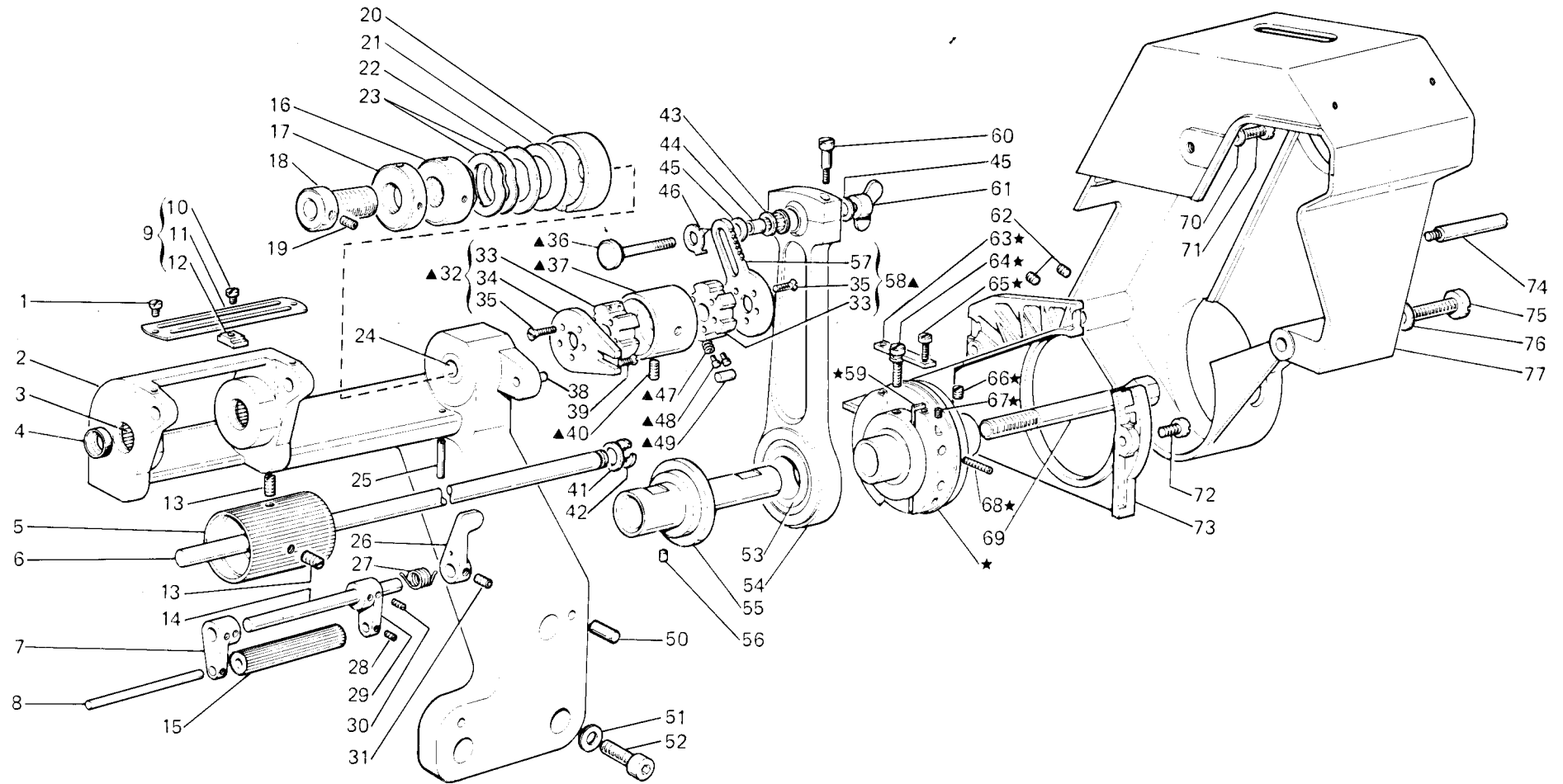


Fig. N. Abb. N.	Part. N. Piece N. Bestell N. Pieza N.	Qt. Anzahl	DESCRIZIONE	DESCRIPTION	DESCRIPTION
48	310796-0-00	20	pernetto	pin	pivot
49	100891-0-10	20	rullino	roller	rouleau
50	706465-0-00	2	spina	pin	goupille
51	704236-2-00	3	rondella	washer	rondelle
52	722484-2-00	3	vite	screw	vis
53	304480-0-00	1	cuscinetto	bearing	coussinet
54	207080-2-11	1	biella con viti	con-rod with screw	bielle avec vis
55	207088-2-10	1	prolunga	extension	extension
56	207089-0-00	1	spina	pin	goupille
57	304084-0-20	1	flangia	flange	flasque
58	304085-4-20	1	settore con flangia sinistra	sector with left flange	secteur avec flasque gauche
59	304451-0-10	1	lardone	gid	lardon
60	743482-2-00	2	vite	screw	vis
61	200413-2-10	1	pomolo con alette	knob with flyer	pommeau avec ailette
62	729012-2-00	2	vite	screw	vis
63	304413-0-10	1	piastrina	plate	plaque
64	304412-0-10	1	vite	screw	vis
65	741721-2-00	2	vite	screw	vis
66	745317-0-00	2	vite	screw	vis
67	304462-0-20	2	vite	screw	vis
68	730061-2-00	2	vite	screw	vis
69	207097-0-02	1	vite	screw	vis
70	704310-2-00	1	rondella	washer	rondelle
71	722452-2-00	1	vite	screw	vis
72	722063-2-00	1	vite	screw	vis
73	207112-0-00	1	carter copricinghia	cover	carter
74	207093-0-00	1	perno filettato	pin	pivot
75	722482-2-00	1	vite	screw	vis
76	704309-4-00	1	rondella	washer	rondelle
77	208241-2-00	1	carter con viti	cover with screw	carter avec vis

TAV.9

H 002012-0-06  
H 002012-1-07

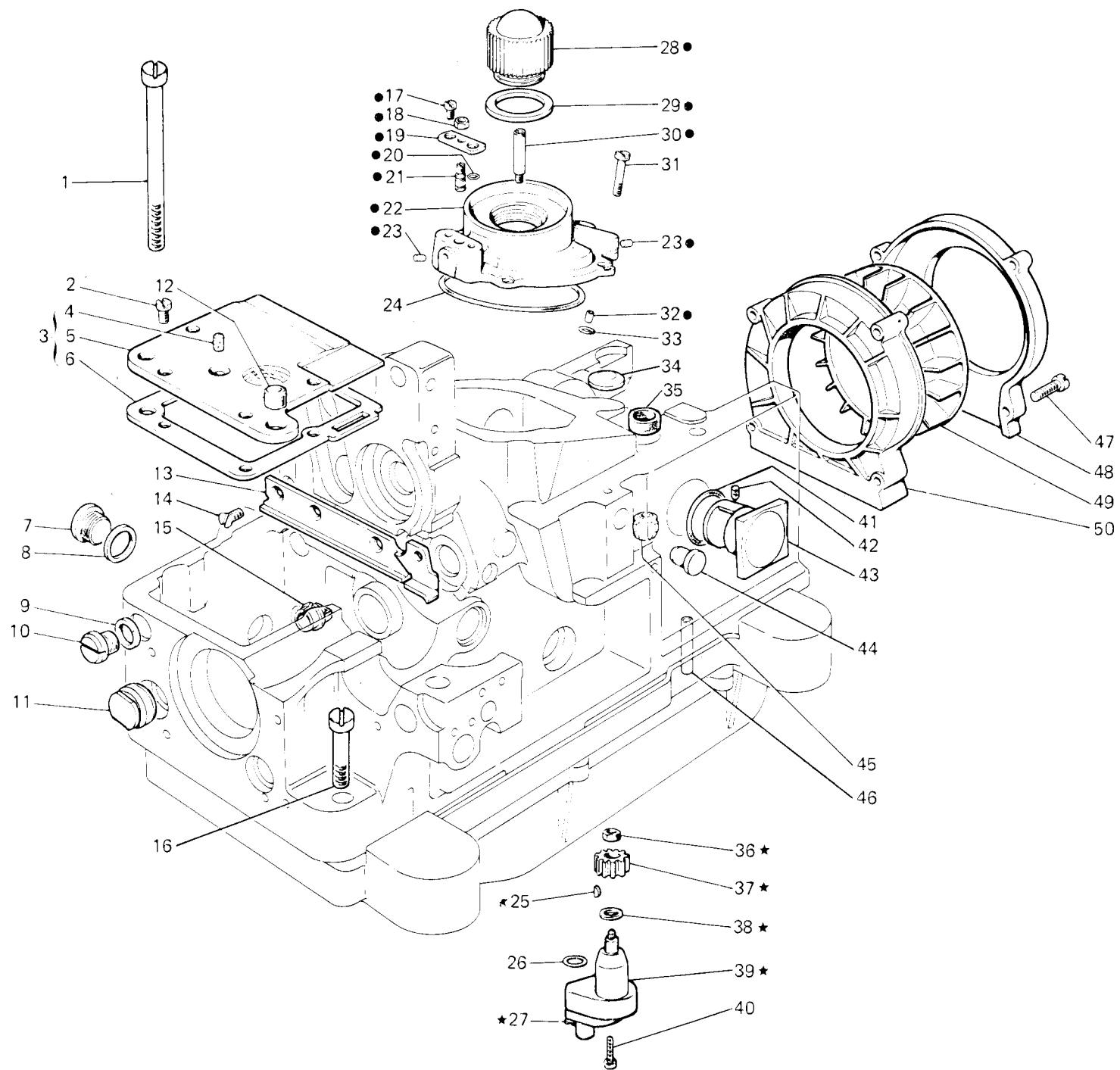




Fig. N. Abb. N.	Part. N. Piece N. Bestell N. Pieza N.	Qt. Anzahl	DESCRIZIONE	DESCRIPTION	DESCRIPTION	BENENNUNG	DESCRIPTION
●	207972-4-01	1	coperchio distrib. olio compl.	oil distributor cover assembly	calotte distribution huile compl.		
★	206550-4-03	1	gruppo pompa olio	oil pump assembly	groupe pompe à huile		
1	207917-0-00	4	vite fissa bacinella	screw	vis		
2	721443-2-00	4	vite	screw	vis		
3	207951-4-00	1	coperchio completo	cover assembly	couvercle complet		
4	778241-0-00	1	stoppino	wick	mèche		
5	207952-2-00	1	coperchio	cover	couvercle		
6	207953-0-00	1	guarnizione	gasket	garniture		
7	202026-0-10	1	tappo	plug	bouchon		
8	705982-0-00	1	guarnizione	gasket	garniture		
9	705975-0-00	1	guarnizione	gasket	garniture		
10	202480-0-10	1	tappo	plug	bouchon		
11	202027-0-10	1	tappo	plug	bouchon		
12	207954-0-00	1	tappo	plug	bouchon		
13	207961-0-00	1	carterino	cover	carter		
14	744634-0-00	3	vite	screw	vis		
15	206619-0-00	1	vaschetta olio	oil sump	cuvette huile		
16	742086-2-00	1	vite fissa bacinella	screw	vis		
17	741535-0-00	2	vite	screw	vis		
18	746007-2-00	1	dado	nut	écrou		
19	207979-0-00	1	piastrina	plate	plaque		
20	701002-0-00	1	anello di tenuta	retainer ring	bague d'étanchéité		
21	207978-0-00	1	pistoncino	piston	piston		
22	207970-2-01	1	coperchio con tappo	cover with plug	couvercle avec bouchon		
23	301586-0-10	2	tappo	plug	bouchon		
24	701151-0-00	1	anello di tenuta	retainer ring	bague d'étanchéité		
25	206557-0-00	1	chiavetta	key	clavette		
26	701004-0-00	1	anello di tenuta	retainer ring	bague d'étanchéité		
27	721494-2-00	2	vite	screw	vis		
28	207973-0-00	1	cupolina	cup	coupole		
29	705970-0-00	1	guarnizione	gasket	garniture		
30	207971-0-00	1	ugello	nozzle	gicleur		
31	722063-2-00	6	vite	screw	vis		
32	207977-0-00	1	bussolina	bush	bague		
33	701106-0-00	1	anello di tenuta	retainer ring	bague d'étanchéité		
34	206748-0-00	1	tappo espansione	plug	bouchon		
35	206667-0-01	1	tappo decompressione	plug	bouchon		
36	733507-0-00	1	dado	nut	écrou		
37	206555-0-01	1	ruota	wheel	roue		
38	704813-0-00	1	rondella	washer	rondelle		
39	206554-0-02	1	coperchio	cover	couvercle		
40	722511-2-00	2	vite	screw	vis		
41	701031-0-00	1	anello di tenuta	retainer ring	bague d'étanchéité		
42	729022-2-00	1	vite	screw	vis		
43	208087-3-00	1	indicatore livello olio	oil level gauge	indicateur niveau huile		
44	202398-0-10	1	tappo	plug	bouchon		
45	207758-0-01	1	bussola guida astina	bush	bague		
46	206296-0-00	1	tubetto scarico olio	pipe	tube		
47	202484-0-10	4	vite	screw	vis		
48	206687-2-00	1	coperchio coclea	cover	couvercle		
49	206690-2-00	1	ventola di raffreddamento	cooling fan	ventilateur		
50	206688-0-00	1	coclea per ventola	scroll	palier		



TAV. 9/A

H 002012-0-06  
H 002012-1-07

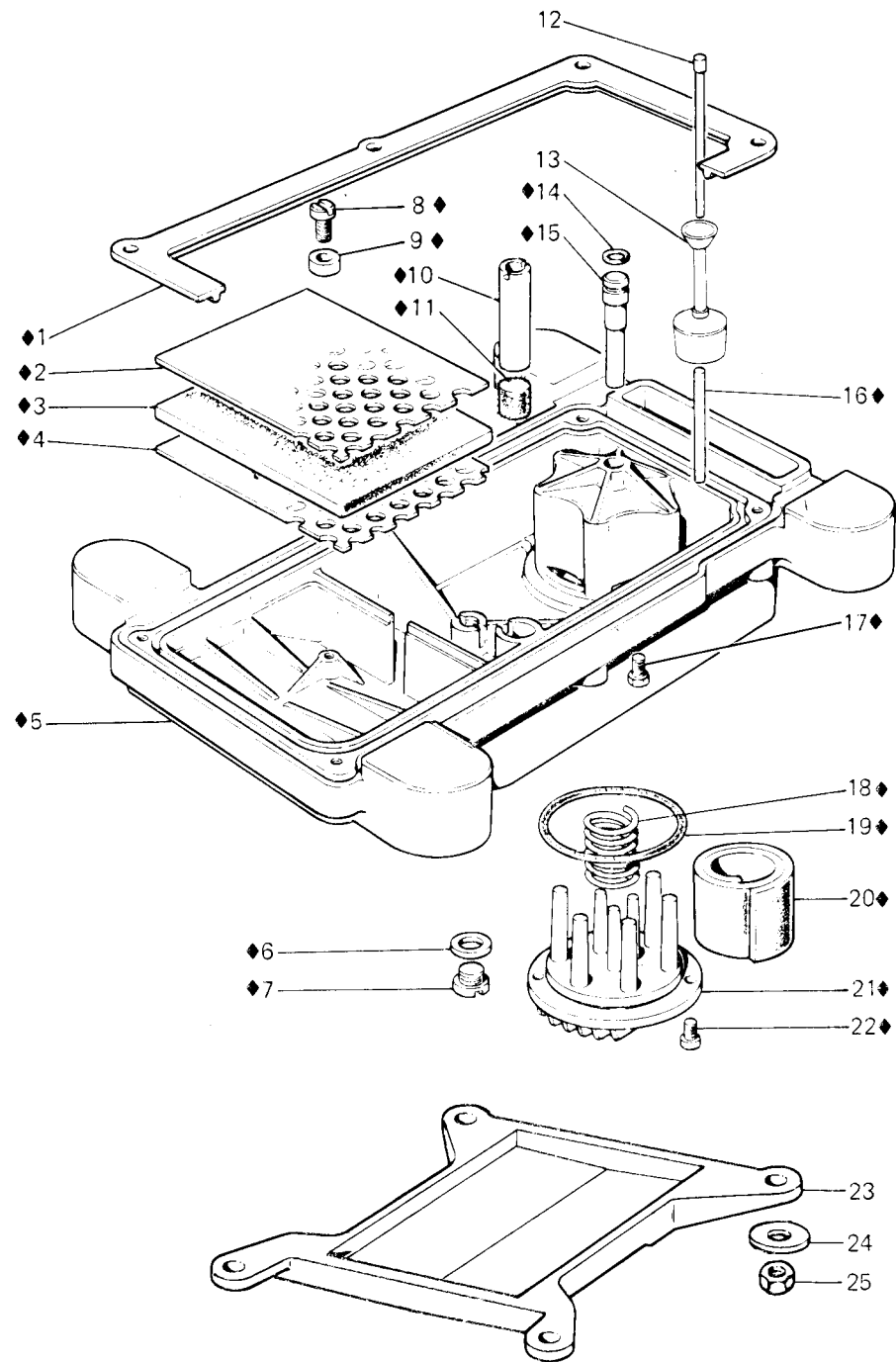


Fig. N. Abb. N.	Part. N. Pezza N. Bestell N.	Qt. Anzahl	DESCRIZIONE	DESCRIPTION	DESCRIPTION
◆	208012-4-01	1	bacinella olio completa	oil sump assembly	réservoir huile compl.
1	207909-0-00	1	guarnizione bacinella	oil sump gasket	garniture réservoir
2	206567-0-01	1	lamiera forata superiore	upper sheet	plaque perforée supérieur
3	206566-0-00	1	filtro	filter	filtre
4	206565-0-01	1	lamiera forata inferiore	lower sheet	plaque perforée inférieur
5	207901-0-01	1	bacinella	oil sump	réservoir
6	705977-0-00	1	rondella	washer	rondelle
7	206564-0-00	1	tappo	plug	bouchon
8	721484-2-00	1	vite	screw	vis
9	990335-0-10	1	distanziale	spacer	entretoise
10	206568-0-01	1	tubetto	pipe	tube
11	206569-0-01	1	filtro	filter	filtre
12	207975-0-00	1	astina indicat. livello olio	oil sump stick	jauge niveau huile
13	206665-2-00	1	galleggiante	float	flotteur
14	701005-0-00	1	anello di tenuta	retainer ring	bague d'étanchéité
15	206558-0-01	1	tubo aspirante	pipe	tube
16	206662-0-00	1	spina	pin	goupille
17	720411-2-00	1	vite	screw	vis
18	206545-0-00	1	spirale per coperchio	spiral for cover	spirale pour couvercle
19	701051-0-00	1	guarnizione	gasket	garniture
20	206559-0-01	1	filtro	filter	filtre
21	206560-0-20	1	coperchio	cover	couvercle
22	722063-2-00	2	vite	screw	vis
23	991218-0-00	1	sottobacinella	underban	sous-réservoir
24	704536-0-00	4	rondella	washer	rondelle
25	733008-2-00	4	dado	nut	écrou

TAV.10

H 002006-1-34

H 002056-2-25

H 002064-1-37

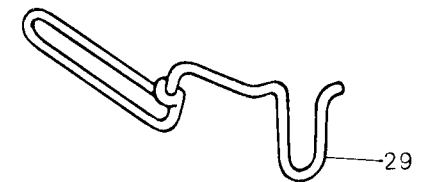
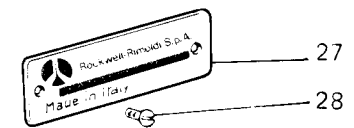
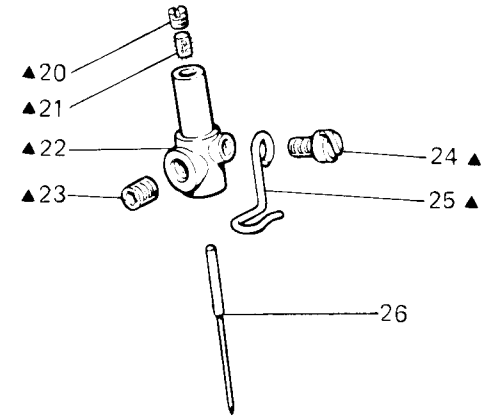
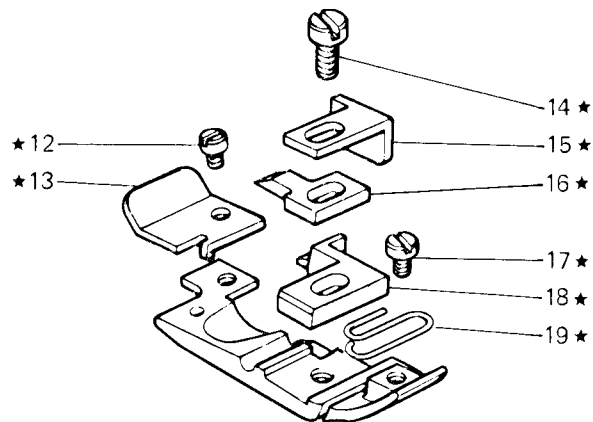
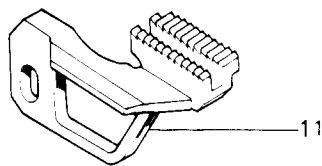
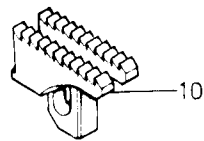
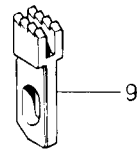
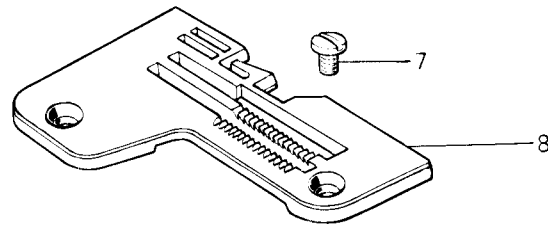
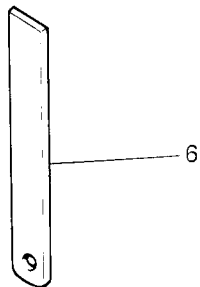
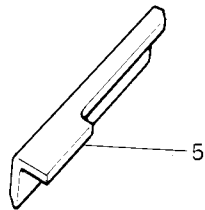
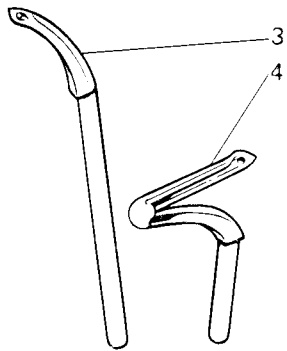
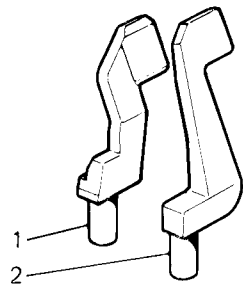


Fig. N. Abb. N.	Part. Piece Bestell Pieza	N. N. N. N.	Qt. Anzahl	DESCRIZIONE	DESCRIPTION	DESCRIPTION
★	206140-3-02		1	piedino completo	presserfoot assembly	pied-presseur complet
▲	207510-4-00		1	morsetto porta aghi completo	needles clamp assembly	porte-aiguilles complet
1	207992-0-00		1	salva ago	rear needle guard	protège-aiguille
2	207995-0-00		1	spingi asola	front needle guard	pare-boucle
3	204021-0-10		1	crochet superiore foro $\phi$ 1,1 mm	upper looper	crochet supérieur
4	202095-0-11		1	crochet inferiore foro $\phi$ 1,1 mm	lower looper	crochet inférieur
5	202142-0-10		2	coltello superiore	upper knife	couteau supérieur
6	202146-0-10		2	coltello inferiore	lower knife	couteau inférieur
7	744742-2-00		2	vite fissa placca	screw	vis
8	203219-0-11		1	placca ago larg. costa 3,8 mm	needle plate width bight 3,8 mm	plaque à aiguille larg. surjet 3,8 mm
9	202609-0-10		1	griffino	feed dog	petite griffe
10	205952-0-00		1	griffa sussidiaria passo 1,5 mm	subsidiary feed dog	griffe subsidiaire
11	205951-0-00		1	griffa principale passo 1,5 mm	main feed dog	griffe principale
12	741413-2-00		1	vite	screw	vis
13	203025-0-10		1	piastrina	plate	plaque
14	741685-2-00		1	vite	screw	vis
15	203768-0-11		1	piastrina	plate	plaque
16	203772-0-11		1	staffa	bracket	bride
17	721412-2-00		1	vite	screw	vis
18	206142-0-01		1	linguetta	tongue	languette
19	206143-0-00		1	piastrina	plate	plaque
20	727021-0-00		1	vite	screw	vis
21	778206-0-00		1	stoppino	wick	mèche
22	207520-2-00		1	morsetto porta aghi	needles clamp	porte-aiguilles
23	745810-2-00		1	vite	screw	vis
24	741415-2-00		1	vite	screw	vis
25	207540-0-00		1	guidafilo	thread guide	guide-fil
26	765200-6-90		1	ago RIM 27 fin. 90	needle RIM 27 size 90	aiguille RIM 27 jauge 90
27	780468-0-40		1	targhetta classe testa	head class plate	plaque classe tête
28	202165-0-10		2	vite	screw	vis
29	990694-0-00		1	salvadita	protection	protection

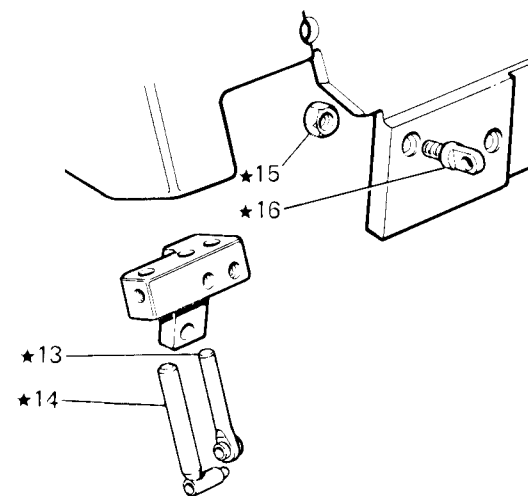
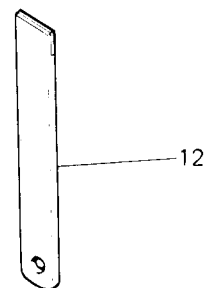
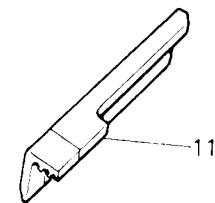
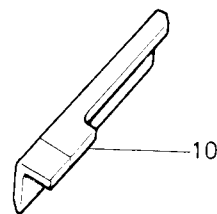
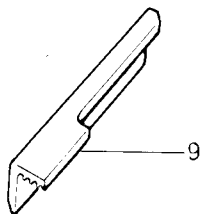
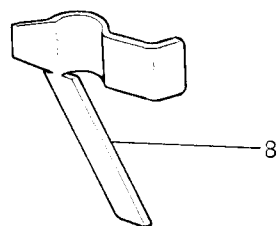
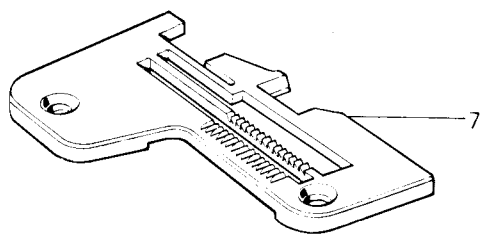
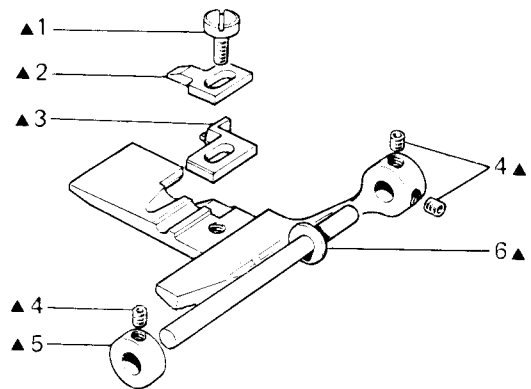


Fig. N. Abb. N.	Part. N. Piece N. Bestell N. Pieza N.	Cr. Anzahl	DESCRIZIONE	DESCRIPTION	DESCRIPTION
			SOLO A RICHIESTA	ONLY ON REQUEST	SEULEMENT SUR DEMANDE
▲	207116-3-01	1	piedino completo	presserfoot assembly	pied-presseur complet
★	208310-4-00	1	gruppo passafili	thread guide assembly	groupe passe-fil
1	741675-2-00	1	vite	screw	vis
2	203772-0-11	1	staffa	bracket	bride
3	202195-0-11	1	linguetta	tongue	languette
4	745800-2-00	3	vite	screw	vis
5	304458-0-10	1	anello	ring	anneau
6	207118-0-01	1	perno	pin	pivot
7	202590-0-11	1	placca ago larg. costa 6 mm	needle plate width bight 6 mm	plaque à aiguille larg. surjet 6 mm
8	202300-0-10	1	guida	guide	guide
9	202143-0-10	1	coltello superiore	upper knife	couteau supérieur
10	207000-2-00	1	coltello superiore	upper knife	couteau supérieur
11	207008-2-00	1	coltello superiore	upper knife	couteau supérieur
12	207015-2-00	1	coltello inferiore	lower knife	couteau inférieur
13	208179-2-00	1	passafilo	thread guide	passe-fil
14	208196-3-00	1	passafilo	thread guide	passe-fil
15	733503-0-00	3	dado	nut	écrou
16	208204-2-00	3	passafilo	thread guide	passe-fil

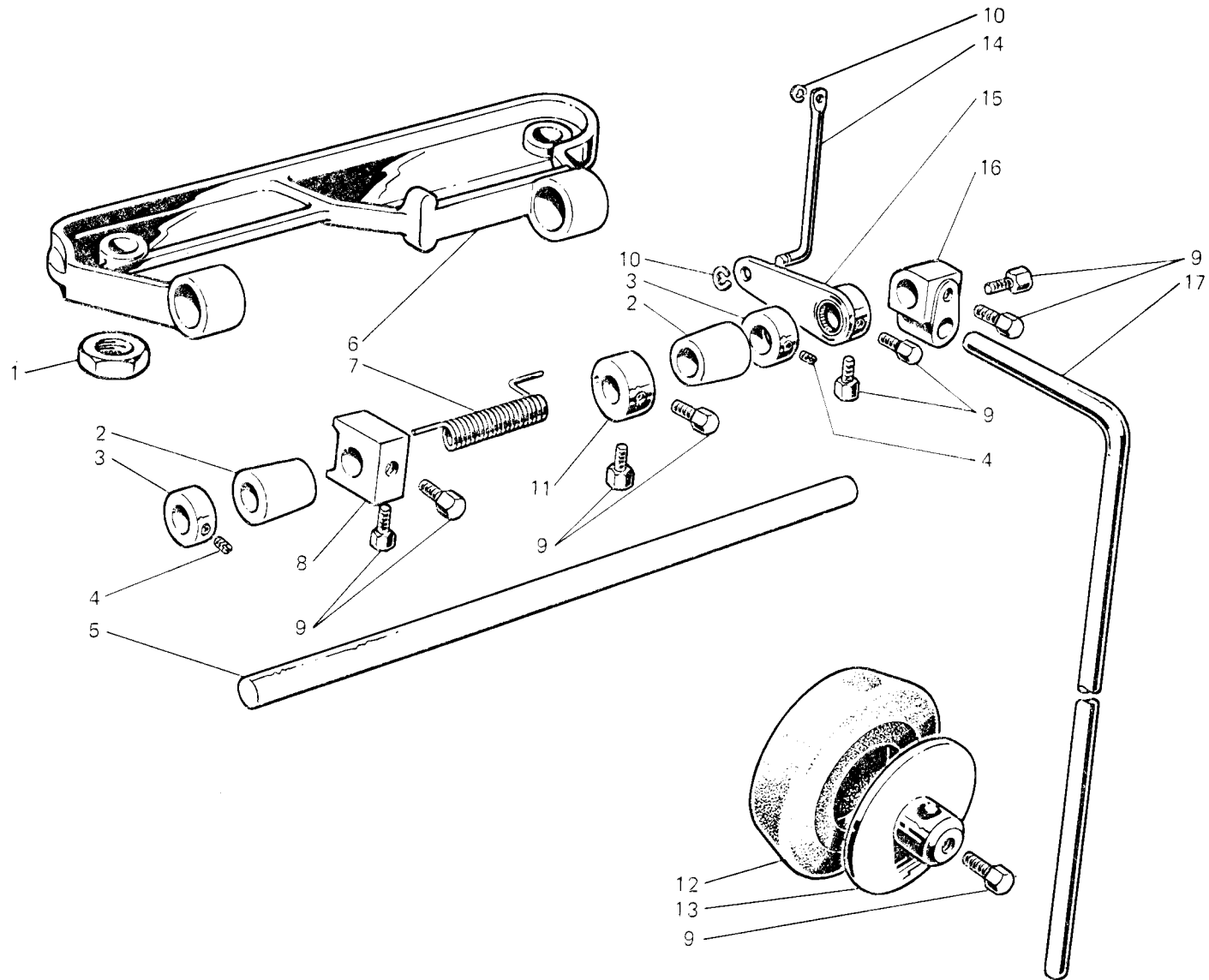




Fig. N. Abb. N.	Part. N. Piece N. Bestell N. Pieza N.	Qt. Anzahl	DESCRIZIONE	DESCRIPTION	DESCRIPTION
—	920245-4-02	1	ginocchiello completo	knee-press assembly	genouillère complète
1	733008-2-00	2	dado	nut	écrou
2	920231-0-00	2	bussola	bush	bague
3	920242-2-00	2	anello	ring	anneau
4	729013-2-00	2	vite	screw	vis
5	920230-0-00	1	albero	shaft	arbre
6	920241-0-01	1	supporto	support	support
7	920235-0-00	1	molla	spring	ressort
8	920128-0-00	1	ancora	anchoring	butée
9	740035-0-00	9	vite	screw	vis
10	700206-0-00	2	anello elastico	spring ring	anneau ressort
11	920114-0-10	1	anello	ring	anneau
12	920113-0-10	1	cuscono	pad	coussin
13	920105-0-10	1	disco	disc	disque
14	920236-0-01	1	tirante	tie-rod	tirant
15	920232-2-00	1	leva	lever	levier
16	920103-0-11	1	attacco	coupling	raccord
17	920490-0-10	1	asta	rod	tige



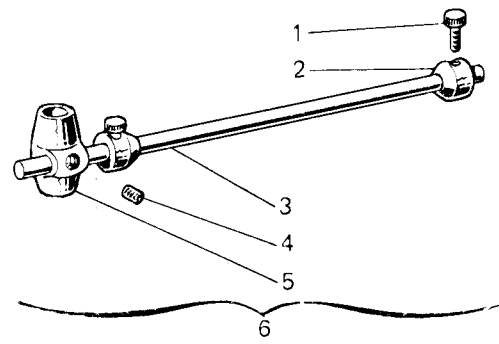


Fig. N. Abb. N.	Part. N. Piece N. Bestell N. Pieza N.	Qt. Anzahl	DESCRIZIONE	DESCRIPTION	DESCRIPTION
1	990596-0-10	2	pomolo	knob	pommeau
2	990594-2-00	2	anello di registro con pomolo	adjustment ring with knob	bague de réglage avec pommeau
3	991229-0-00	1	asta	rod	tige
4	729024-2-00	2	vite	screw	vis
5	991153-2-00	1	supporto con viti	support with screw	support avec vis
6	991228-4-00	1	asta portarotolo compl.	rod for roll carrier assembly	tige pour porte-rouleau complet

H 121002-0-18  
H 121002-0-24

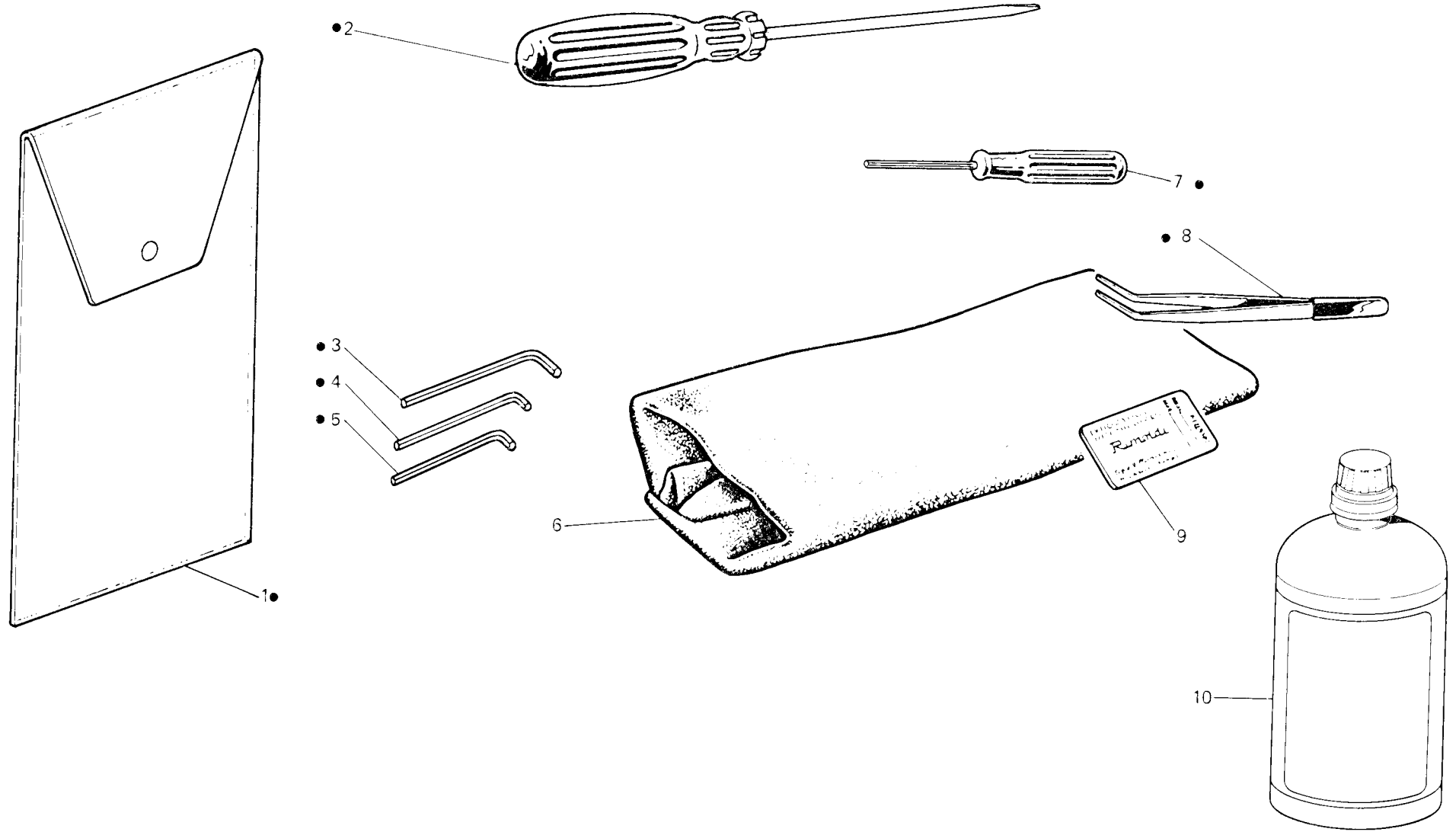


Fig. N. Abb. N.	Part. N. Bestell N. Piece N. Pieza N.	Qt. Anzahl	DESCRIZIONE	DESCRIPTION	DESCRIPTION	BENENNUNG	DESCRIPCION
●	991400-4-02	1	busta accessori completa	accessories envelope assembly	envelope accessoires complète		
1	991415-0-00	1	busta accessori	accessories envelope	envelope accessoires		
2	990723-0-00	1	cacciavite medio	screw driver	tournevis moyen		
3	990639-0-10	1	chiave esag. da 3 mm	3 mm hexagonal key	clé hexagonale de 3 mm		
4	990685-0-10	1	chiave esag. da 2,5 mm	2,5 mm hexagonal key	clé hexagonale de 2,5 mm		
5	990325-0-10	1	chiave esag. da 2 mm	2 mm hexagonal key	clé hexagonale de 2 mm		
6	990183-0-13	1	cuffia protezione testa	machine cover	couverture protection tête		
7	990474-0-11	1	chiave esag. da 1,5 mm	1,5 mm hexagonal key	clé hexagonale de 1,5 mm		
8	990176-0-10	1	pinza per infilatura	threading clers	pince pour enfilage		
9	★	1	bustina aghi	needles packet	paquette aiguilles		
10	991280-0-00	1	lattina olio	oil container	bidon huile		
			★ per l'ordinazione della bustina citare lo stesso simbolo dell'ago montato sulla testa	to order packet of needles please specify symbol of needle fitted on machine	pour commander un sachet d'aiguilles donner le symbol de l'aiguille montée sur la tête		

TAV.14

H 121002-0-15  
H 121002-0-16  
H 121002-0-17

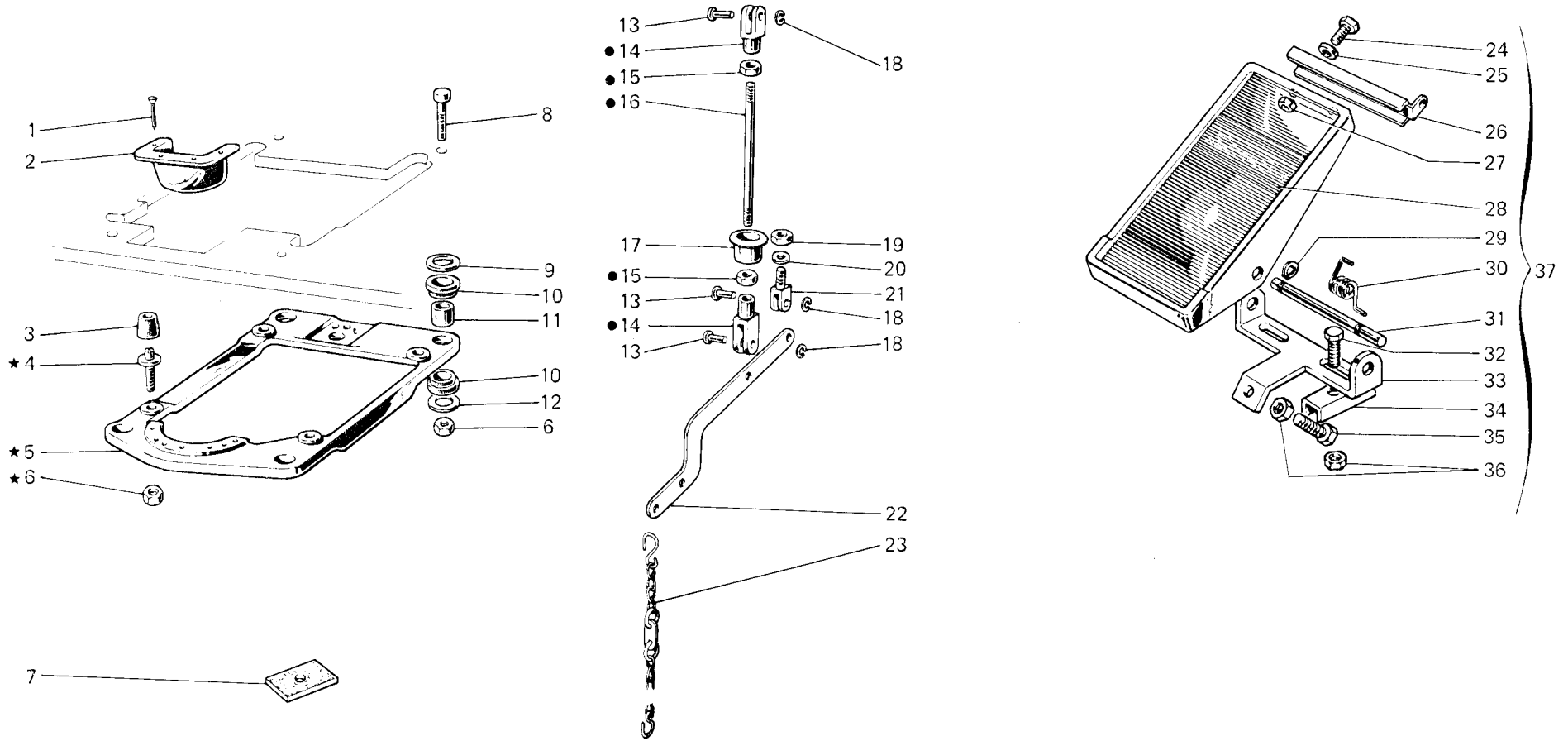


Fig. N. Abb. N.	Part. N. Piese N. Bestell N. Pieza N.	Qt. Anzahl	DESCRIZIONE	DESCRIPTION	DESCRIPTION
★	990987-4-00	1	PIAZZAMENTO NORMALE	NORMAL SETTING	INSTALLATION NORMAL
●	990984-4-10	1	supporto testa completo	head support assembly	support tête complet
1	990984-4-10	1	tirante alza piedino completo	presser tie-rod assembly	tirant pour soulèv. pied-presseur
1	900201-0-10	4	chiodino	rivet	clou
2	991187-0-00	1	bocchetta	cup	bouche
3	990982-0-00	4	ammortizzatore	shock absorber	amortisseur
4	900694-0-11	4	perno	pin	pivot
5	990981-0-00	1	supporto testa	head support	support tête
6	733008-2-00	8	dado	nut	écrou
7	900203-0-10	4	ammortizzatori per tavola	shock absorber	amortisseur
8	722905-2-00	4	vite	screw	vis
9	704346-2-00	4	rondella	washer	rondelle
10	901101-0-00	8	ammortizzatore	shock absorber	amortisseur
11	901102-0-00	4	distanziale	spacer	entretoise
12	704345-2-00	4	rondella	washer	rondelle
13	990311-0-10	3	perno	pin	pivot
14	990310-0-10	2	giunto	joint	joint
15	746402-2-00	2	dado	nut	écrou
16	990452-0-00	1	tirante	tie-rod	tirant
17	900204-0-10	1	bussola	bush	bague
18	700205-0-00	3	anello elastico	spring ring	anneau ressort
19	746409-2-00	1	dado	nut	écrou
20	704424-2-00	1	rondella	washer	rondelle
21	990314-0-10	1	supportino	support	support
22	990316-0-11	1	leva	lever	levier
23	990179-4-11	1	catenella completa	chain assembly	chaînette complète
24	720464-4-00	2	vite	screw	vis
25	704009-4-00	2	rondella	washer	rondelle
26	900926-0-00	1	attacco	coupling	raccord
27	733508-4-00	2	dado	nut	écrou
28	900931-0-00	1	copertura	covering	couverture
29	900918-0-00	2	anello elastico	spring ring	anneau ressort
30	900927-0-00	1	molla	spring	ressort
31	900928-0-00	1	perno	pin	pivot
32	720505-4-00	2	vite	screw	vis
33	900929-0-01	1	supporto	support	support
34	900920-0-00	2	piastrina	plate	plaque
35	720545-4-00	1	vite	screw	vis
36	733510-4-00	3	dado	nut	écrou
37	900925-4-01	1	pedalina completa	pedal assembly	pédale complète

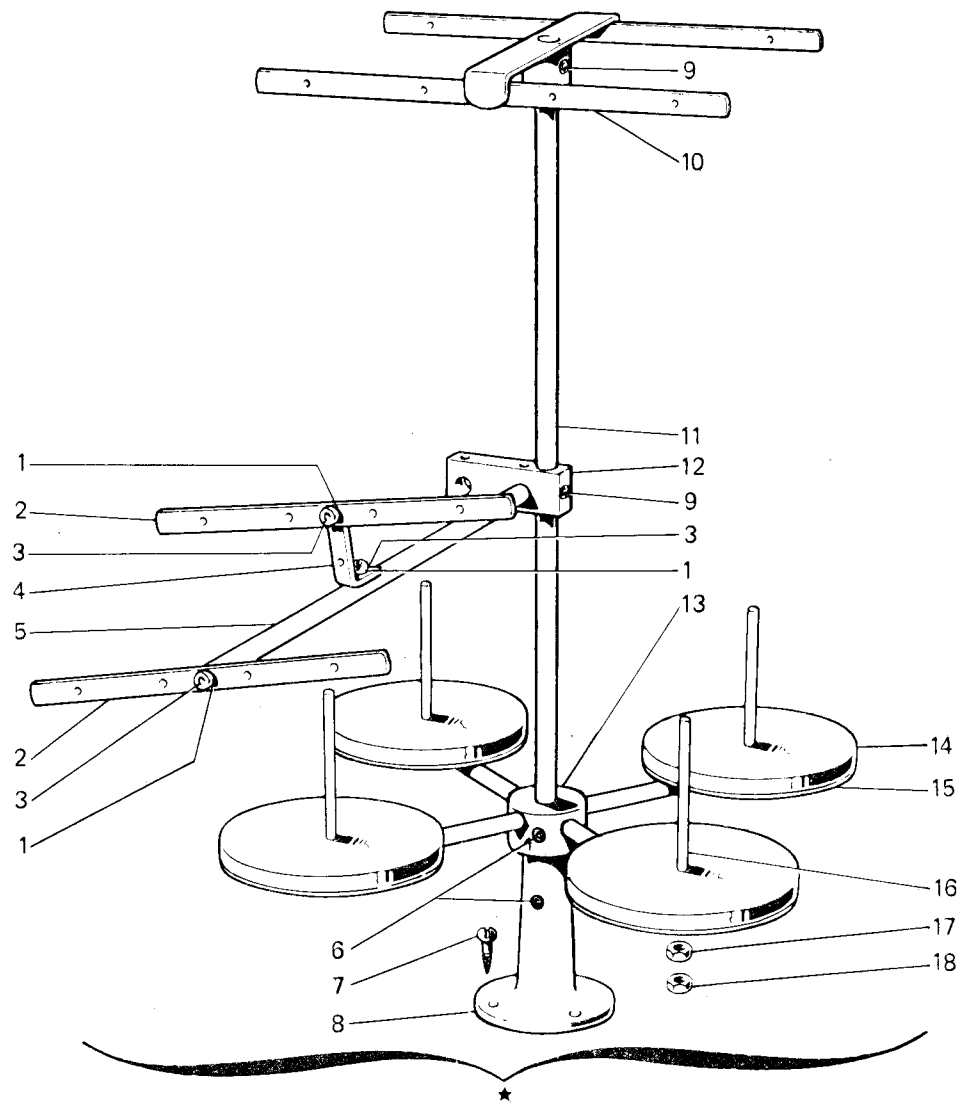




Fig. N. Abb. N.	Part. N. Bestell N. Piece N. Pieza N.	Qt. Anzahl	DESCRIZIONE	DESCRIPTION	DESCRIPTION
★	991120-5-00	1	porta bobine compl. (4-3 fili)	bobbin carrier ass. (4-3 threads)	porte bobine compl. (4-3 fils)
1	703005-0-00	3	rondella	washer	rondelle
2	991108-2-00	2	tubetto con bussole	frame with bushes	bâti avec bagues
3	722431-2-00	3	vite	screw	vis
4	991107-2-00	1	squadretta con viti e rondelle	bracket with screws and washer	équerre avec vis et rondelle
5	991106-2-00	1	asta con rondelle e viti	rod with washer and screw	tige avec rondelle et vis
6	729054-2-00	3	vite	screw	vis
7	731107-2-00	3	vite	screw	vis
8	991114-2-00	1	basetta	base	base
9	729034-2-00	3	vite	screw	vis
10	991121-3-00	1	telaio superiore	upper frame	bâti supérieur
11	991113-0-00	1	asta principale	main rod	tige principale
12	991128-2-00	1	blocchetto con viti	block with screw	bloc avec vis
13	991129-3-00	1	mozzo con aste e viti	hub with rod and screw	moyeau avec tige et vis
14	991179-0-00	4	disco	disc	disque
15	991112-0-00	4	piatto	disc	plateau
16	991111-2-00	4	astina con dadi	rod with nut	tige avec écrou
17	733508-2-00	4	dado	nut	écrou
18	925433-0-00	4	dado	nut	écrou