

268-00-3MA-01
268-00-3MD-01

Edizione-Edition 6/81

n. 247

Il presente Catalogo Pezzi di Ricambio è costituito da due parti: la prima, definita come "Catalogo base", comprende i particolari montati sulla testa più significativa (la prima dell'elenco in copertina); la seconda comprende tutti i particolari delle altre teste basi o derivate, che differiscono da quella del Catalogo base.

Le Teste basi sono elencate in copertina con un carattere più grande rispetto a quello delle derivate.

Nella consultazione del Catalogo tenere presente che:

1. Tutti i particolari non fornibili sciolti non vengono richiamati singolarmente, ma soltanto illustrati nel gruppo d'appartenenza.
2. I riferimenti delle figure dei particolari che compongono il gruppo sono di norma raggruppati in una parentesi. In alcuni casi però, dove non è possibile il raggruppamento, i numeri che nelle tavole illustrative richiamano i singoli pezzi sono affiancati dallo stesso segno particolare, con cui è indicato l'intero gruppo.
3. Sulle tavole relative alle altre teste sono elencati tutti i particolari diversi o non montati sulla testa del Catalogo Base. Dette tavole portano in alto a destra il simbolo della testa cui si riferiscono (con indicato fra parentesi - nel caso di derivata - il simbolo della testa da cui deriva).
I disegni di questo gruppo di tavole illustrano soltanto i pezzi nuovi o sostanzialmente diversi rispetto a quelli montati sulla testa più significativa del Catalogo.
I particolari richiamati come simbolo, ma non illustrati, conservano lo stesso numero di figura dei corrispondenti raffigurati sul Catalogo base.
I particolari comuni a tutte le teste comprese nel Catalogo, vengono richiamati soltanto nel primo gruppo di tavole.
I particolari definiti come "pezzi annullati" si intendono quelli non montati sulla testa a cui la tavola si riferisce. Nel caso di un gruppo annullato, viene indicato soltanto il simbolo del gruppo, ma devono intendersi annullati anche tutti i particolari componenti il gruppo stesso.
Per ogni testa viene sempre riportata interamente la tavola relativa agli organi di cucitura.

Per facilitare la ricerca viene riportato l'indice numerico di tutti i particolari illustrati sul Catalogo base, con la relativa tavola in cui gli stessi sono richiamati.

AGHI

Gli aghi sono contraddistinti dal sistema e dalla finezza, la quale indica il diametro medio espresso in centesimi di millimetro.

Il sistema dell'ago e la finezza sono marcati oltre che sulla busta, anche sull'ago stesso.

Nelle ordinazioni precisare, oltre il simbolo, il sistema e la finezza degli aghi desiderati. In caso di dubbio, allegare, un ago campione o una bustina vuota.

AVVERTENZA

Nella richiesta di parti di ricambio citare sempre il relativo numero di matricola della macchina, il simbolo del particolare e la denominazione ufficiale usata sul catalogo.

This spare parts catalogue is made up of two parts: in the first one, called "basic catalogue", all the details of most representative head are listed (the first head listed on the cover); the second one includes the details of the other main heads or derived ones, which are different from that of the basic catalogue.

The main heads are listed on the cover in bigger lettering to distinguish them from the derived heads.

When you consult the catalogue will you please note that:

1. all parts which cannot be supplied by themselves are not indicated alone, but shown together with the group to which they belong;
2. the references of the pictures of the parts making up the group are usually put in brackets.
In some cases, however, when their grouping is not possible, the numbers of the various parts in the tables are marked with the same particular sign with which the whole group is indicated.

3. In the tables of the other heads there are listed all the parts not fitted on the head in the basic catalogue.

These tables are marked at the top right-hand corner with the symbol of the head which the table refers to.

The drawings in this group of tables show only the parts which are new or basically different from those fitted on the most representative head in the catalogue.

The parts which are represented only by the symbol but not illustrated keep the same figure number as the corresponding parts shown in the basic catalogue.

The parts which are common to all the heads in the catalogue are listed only in the first group of tables.

Parts marked "annulled part" are those not fitted on the head which the table refers to.

When an assembly has been annulled only the assembly symbol is specified, but all the parts forming the assembly must also be considered annulled.

For each head the table for sewing parts is always repeated completely.

To make it easier to locate the parts, the reference numbers of all of those shown in the basic catalogue are listed together with the number of the table in which they are to be found.

NEEDLES

The needles are marked with system and size; the size indicates the average diameter in hundredths of a millimeter.

The system and size of the needle are shown on the packet as well as on the needle itself.

When ordering please state symbol, system and size. If you have doubts, enclose a sample needle or an empty packet with your order.

ATTENTION

When ordering spare parts always state the serial number of the machine, the symbol of the part in question and the description given in the catalogue.

Ce catalogue "pièces détachées" est formé de deux parties: la première appelée "catalogue base" comprend toutes les pièces montées sur la tête la plus significative (celle en tête de la liste de couverture), la seconde comprend toutes les pièces montées sur les autres têtes de base ou dérivées qui sont différentes de celle du "catalogue base".

Les têtes de base sont énumérées sur la couverture, en caractères plus grands que les têtes dérivées.

Lorsque l'on consulte le catalogue, se souvenir que:

1. Toutes les pièces qui ne sont pas fournies séparément mais qui font partie d'un groupe, ne sont pas indiquées séparément.
2. Les symboles des pièces qui forment un groupe sont regroupés entre parenthèses. Cependant, lorsque ceci n'a pas été possible, les symboles, qui dans les tables d'illustration correspondent aux pièces, sont suivis du même signe particulier qui indique le groupe tout entier.

3. Dans les tables relatives aux autres têtes, nous avons indiqué toutes les pièces différentes de celles de tête du "catalogue base" ou qui ne sont pas montées sur ces dernières. Ces tables portent, en haut à droite, le symbole des têtes auxquelles elles se réfèrent (pour les dérivées, le symbole de la tête de laquelle elles dérivent est indiqué entre parenthèses).

Les dessins de ce groupe de tables représentent seulement les nouvelles pièces ou celles qui sont différentes des pièces montées sur la tête la plus significative du catalogue.

Les pièces indiquées par un symbole, mais qui ne sont pas illustrées, gardent le même numéro de dessin que celles correspondantes, illustrées sur le catalogue base.

Les pièces communes à toutes les têtes du catalogue, sont indiquées seulement dans le premier groupe de tables.

Les pièces définies comme "pièces annulées" sont celles qui ne sont pas montées sur la tête à laquelle se réfère la table. Dans le cas de l'annulation d'un groupe, nous indiquons seulement le symbole du groupe, mais toutes les pièces qui forment ce groupe sont annulées.

Pour chaque tête est toujours indiquée la table se référant aux organes de couture.

Pour faciliter la recherche, le catalogue renferme l'index numérique de toutes les pièces illustrées avec indication de la table dans laquelle elles sont indiquées.

AIGUILLES

Les aiguilles se différencient par le système et la grosseur, laquelle indique le diamètre moyen exprimé en centièmes de millimètre.

Le système de l'aiguille et sa grosseur, sont indiqués non seulement sur le sachet mais également sur l'aiguille.

Dans la commande, préciser, en plus du symbole, le système et la grosseur des aiguilles désirées. En cas de doute, joindre une aiguille comme modèle ou un sachet vide.

ATTENTION

Dans la commande de pièces détachées, indiquer toujours le numéro de la machine, le symbole de la pièce et la dénomination officielle mentionnée sur le catalogue.

INDICE NUMERICO INDEX

Part. N.	Tav. N.	Part. N.	Tav. N.	Part. N.	Tav. N.	Part. N.	Tav. N.	Part. N.	Tav. N.	Part. N.	Tav. N.	Part. N.	Tav. N.
100174-0-10	13	301050-0-11	13	304662-0-10	4	308046-2-01	6	308128-0-01	4	308236-2-01	9	308495-2-01	1
200324-0-10	3	301268-0-10	13	304684-0-10	7	308047-0-00	6	308129-0-01	4	308238-4-00	9	308501-0-01	1
200710-0-10	1	301379-0-10	7	304763-0-10	8	308051-0-01	8	308137-0-00	1	308239-0-00	1	308503-0-01	1
200714-0-10	1	301458-0-10	6-7	304767-2-11	8	308054-0-01	8	308138-0-12	4	308244-4-00	9	308505-0-00	1
201128-0-10	9	301459-4-10	6-7	305194-0-00	6	308055-2-00	8	308140-0-00	6	308253-3-00	6	308506-0-00	1
201143-0-10	6-7	301519-2-11	7	305666-0-00	12	308056-0-01	8	308148-0-00	8	308269-0-00	10	308507-0-00	1
202032-0-11	9	301579-0-10	6	305668-0-00	13	308057-0-00	8	308149-0-01	5	308272-0-00	6	308509-0-00	1
202165-0-10	13	301596-0-11	13	305669-0-00	13	308058-0-00	8	308159-2-01	5	308273-0-00	6	308510-0-00	1
202229-0-10	1	301598-0-11	13	305672-0-00	13	308059-0-01	8	308161-0-00	5	308278-0-01	7	308512-0-00	1
202239-0-10	4	302052-2-21	6	305673-2-00	13	308060-4-00	8	308162-0-00	5	308281-0-00	7	308518-4-00	1
202397-0-10	6	302059-0-10	8	305676-0-00	13	308061-0-01	8	308166-0-00	5	308283-2-10	7	308521-4-00	1
202398-0-10	12	302060-0-11	8	305677-0-00	13	308062-2-00	8	308174-3-01	5	308285-2-02	7	308545-4-00	1
202474-0-10	6	302136-0-12	1	305678-0-00	13	308065-2-00	10	308178-4-01	5	308286-4-00	7	308551-0-00	3
202486-0-10	7	302146-0-10	13	305695-3-00	13	308067-0-00	10	308179-0-00	11	308287-0-00	7	308556-0-00	3
202487-0-10	8	302162-2-10	3	305696-0-00	13	308071-3-01	10	308180-2-01	12	308289-4-11	7	308558-0-00	3
202556-0-01	1	302204-0-10	3	305697-0-00	13	308072-2-00	10	308184-0-00	12	308291-0-01	6	308576-2-20	11
202558-2-01	1	302232-0-10	8	307381-0-02	13	308073-0-01	10	308185-0-00	12	308293-0-02	5	308588-4-10	11
206545-0-00	11	302234-0-10	8	307676-0-00	7	308074-0-00	10	308190-0-00	7	308294-0-10	7	308714-3-00	5
206551-0-00	12	302238-0-11	8	308002-0-00	11	308075-0-00	10	308191-4-01	7	308296-0-00	7	308750-2-00	13
206552-2-00	12	302272-0-10	5	308005-0-00	9	308076-2-01	10	308193-2-01	7	308297-0-00	6	308753-0-00	10
206555-0-00	12	302276-0-10	6	308006-4-00	9	308077-2-01	10	308195-0-00	7	308310-0-00	6	308774-2-00	7
206557-0-00	12	302289-0-10	6	308007-0-00	8	308078-0-00	10	308197-0-00	15	308320-4-00	8	308780-2-00	7
206559-0-01	11	302292-0-10	13	308009-0-00	5	308079-4-00	10	308199-0-00	15	308325-3-00	6	308783-2-00	4
206560-0-10	11	302338-0-10	9	308012-2-10	5	308081-4-01	10	308203-0-01	1	308326-2-01	6	308851-2-01	5
206564-0-00	11	302344-0-10	8	308013-4-02	5	308084-2-00	5	308206-0-00	11	308327-0-00	6	308852-0-00	5
206580-2-00	3	302347-0-10	10	308015-0-00	5	308086-0-10	5	308207-0-00	12	308330-3-00	6	308853-0-00	5
206583-0-00	9	302352-0-10	13	308029-2-00	7	308098-0-00	8	308208-0-00	11	308331-4-00	11	308855-0-00	9-10
206665-2-00	11	302353-0-10	4	308030-2-00	6	308101-2-01	4	308209-0-00	11	308334-0-00	6	308858-0-00	5-12
206669-2-02	12	302354-0-20	4	308031-0-00	9	308102-0-10	4	308210-0-00	11	308341-4-00	6	308859-2-00	5
300006-0-12	4	302355-0-10	4	308032-0-00	9	308103-4-00	4	308211-0-00	12	308358-4-01	7	308860-0-00	10
300209-0-10	6-7	302356-0-10	5	308035-0-00	5	308104-0-00	12	308213-0-00	11	308379-0-00	11	308861-0-00	10
300218-0-10	1	303045-0-10	1	308036-2-00	9	308105-4-03	12	308214-0-00	12	308381-2-00	5	308862-0-01	10
300310-0-10	3	303458-0-12	7	308037-0-00	9	308107-0-01	1	308218-0-00	9	308389-0-00	5	308863-0-00	10
300351-0-11	6	303459-2-11	6	308038-0-10	9	308110-3-00	12	308219-0-01	12	308407-4-00	15	308864-4-00	10
300352-0-10	6	303501-0-10	5	308039-0-01	1-9	308111-0-00	12	308221-0-00	9	308410-0-00	15	308865-0-00	10
300377-0-10	6	303538-0-00	6	308040-2-00	12	308113-0-00	11	308226-0-02	11	308412-2-00	8	308867-4-00	10
300393-0-00	3	303539-0-00	6	308041-0-00	9	308114-2-02	12	308231-0-00	8	308418-4-00	7	308868-2-00	10
300469-2-11	6	303899-0-11	9	308042-0-00	9	308119-0-00	5	308232-0-00	9	308452-2-00	1	308869-0-00	10
300482-0-10	6	304612-0-10	7	308043-0-00	12	308123-0-00	12	308233-0-00	9	308458-3-00	6	308874-0-00	10
300483-0-10	3-4	304616-0-11	7	308044-0-00	6	308125-0-01	11	308234-2-00	9	308459-4-00	6	308882-0-00	6
300917-0-10	13	304640-0-10	7	308045-0-01	6	308127-0-00	5	308235-0-00	9	308461-0-00	15	308890-0-00	1

INDICE NUMERICO INDEX

Part. N.	Tav. N.	Part. N.	Tav. N.	Part. N.	Tav. N.	Part. N.	Tav. N.	Part. N.	Tav. N.	Part. N.	Tav. N.	Part. N.	Tav. N.
308891-0-00	5	310460-0-01	3	704813-0-00	12	724420-2-00	1	741658-2-00	4-10	778707-0-00	10	991253-4-00	17
308957-0-00	11	310461-0-00	3	704814-0-00	7	724441-0-00	7	741675-2-00	6	778827-0-00	6	991254-4-00	16
308967-2-01	3	310500-4-00	12	704828-0-00	9	727098-0-00	2	741682-0-00	3	780200-0-40	13	991255-0-00	16-17
308971-3-00	3	310561-2-00	12	704835-0-00	10	727215-0-00	3-6-7	741724-0-00	10	788020-0-01	13	991256-0-00	16-17
308996-0-01	8	311098-0-00	3	704846-0-00	6-7	727834-2-00	1	741936-2-00	4	790242-0-00	12	991257-0-00	16-17
309042-2-00	4	311395-0-00	11	704849-0-00	6	728232-0-00	7	741984-2-00	15	790315-0-00	12	991259-3-00	16-17
309059-4-00	4	312819-3-00	6	704869-0-00	5	729011-2-00	6	742222-2-00	5	790325-0-00	12	991280-0-00	14
309084-0-00	4	312850-4-00	6	705013-0-00	5-9-10	729012-2-00	1	742282-2-00	4	790342-0-00	12	991363-5-00	2
309086-0-01	4	313375-0-01	1	705201-0-00	3	729013-2-00	5-7	742311-2-00	1	900201-0-10	17	991368-0-00	2
309088-0-01	4	313566-0-00	2	705208-0-00	9	729032-2-00	12	742423-0-00	6	900203-0-10	16-17	991370-2-00	2
309126-3-00	4	700205-0-00	8	705734-0-00	6	729034-2-00	8	742811-0-00	7-13	900204-0-10	16	991371-2-00	2
309139-4-00	4	700208-0-00	16-17	705834-0-00	6	729044-2-00	2-15	742813-0-00	7	900694-0-11	17	991372-2-00	2
309177-3-00	4	700596-0-00	5	705970-0-00	4	729051-2-00	10	743265-2-00	13	900918-0-00	16-17	991373-2-00	2
309277-0-00	4	701004-0-00	12	705977-0-00	11	729434-2-00	6	743541-2-00	16-17	900920-0-00	16-17	991374-0-00	2
309302-2-00	4	701009-0-00	6	706454-0-00	5	729445-2-00	2	744040-2-00	6	900925-4-01	16-17	991375-0-00	2
309319-4-00	13	701032-0-00	12	707240-0-00	8	729884-2-00	8	744636-2-00	4	900926-0-00	16-17	991376-0-00	2
309321-0-00	13	701051-0-00	11	707241-0-00	8	730032-2-00	5	744656-2-00	4	900927-0-00	16-17	991377-0-01	2
309323-0-00	4	701134-0-00	11	707518-0-00	4	730033-2-00	6-10	744676-2-00	1-6	900928-0-00	16-17	991382-0-00	2
309324-2-10	4	701405-0-00	1	707556-0-00	4	730054-2-00	15	744730-0-00	13	900929-0-01	16-17	991383-0-00	2
309330-0-00	13	702403-0-00	6	720411-2-00	4	733008-2-00	16-17	745001-0-00	13	900931-0-00	16-17	991408-4-02	14
309332-0-00	4	703003-0-00	11	720464-4-00	16-17	733212-2-00	2	745126-2-00	1	901101-0-00	16-17	991415-0-00	14
309351-0-00	4	703005-0-00	9	720505-4-00	16-17	733507-0-00	12	745136-2-00	7	901102-0-00	16-17	991640-0-00	2
309352-0-00	4	703010-0-00	2	720545-4-00	16-17	733508-2-00	2	745800-2-00	10-13	901251-2-00	16	992006-2-00	2
309360-0-00	4	703810-0-00	6	720546-0-00	16	733508-4-00	16-17	745810-2-00	13	901253-0-00	16	992009-2-00	2
309371-0-00	4	704009-4-00	16-17	721424-2-00	12	733510-4-00	16-17	745812-2-00	5-6-7-9-10	990069-0-00	14		
309372-0-00	4	704018-2-00	2	721433-2-00	10	733813-0-00	16-17	745815-2-00	5-6-7	990175-0-10	14		
309562-0-00	7-10	704104-2-00	3	721444-2-00	1-3-4	740034-0-00	8	745827-2-00	5-8	990176-0-10	14		
309691-0-00	10	704210-4-00	3-9	721474-2-00	4	740210-2-00	3	746007-2-00	10	990179-4-11	16-17		
309692-2-01	10	704218-2-00	3-6	721475-2-00	15	740220-2-00	3	746008-0-00	9-10	990188-0-10	14		
309830-2-00	5	704226-2-00	6-7	721484-2-00	11	740226-0-00	6-10	746204-0-00	8	990193-0-00	14		
309831-2-00	5	704236-2-00	8	721494-2-00	8-10	740236-0-00	10	746406-2-00	7	990317-0-10	17		
309838-2-00	7	704240-2-00	8	721514-0-00	12	740240-0-00	11	746407-2-00	7	990474-0-11	14		
309839-2-00	7	704302-4-00	3	722063-2-00	11	740444-2-00	8	746408-2-00	5-9-10	990578-0-13	14		
309863-4-00	13	704306-0-01	4	722084-2-00	4-5	740632-2-00	8	746409-2-00	16-17	990587-0-11	14		
310013-4-00	13	704309-4-00	6-10	722411-2-00	11	741056-0-00	5	746612-2-00	7	990723-0-00	14		
310350-4-00	6	704310-2-00	16-17	722422-2-00	9	741082-2-00	12	766000-6-90	9	990982-0-00	16-17		
310376-4-00	3	704316-2-00	16-17	722453-2-00	11	741088-2-00	4	778203-0-00	9	991112-0-00	2		
310433-0-01	3	704345-2-00	16-17	722464-2-00	2	741092-0-00	12	778204-0-00	10	991179-0-00	2		
310457-0-00	3	704346-2-00	16-17	722905-2-00	17	741413-2-00	3	778238-0-00	6-7	991250-0-00	16-17		
310458-0-00	3	704347-0-00	7	722907-2-00	16	741612-2-00	3	778502-0-00	10	991251-4-00	17		
310459-0-00	3	704406-0-00	7	722920-2-00	16	741642-2-00	3	778544-0-00	9	991252-4-00	16		

TAV. 1

H 003022-1-08

H 003022-1-52

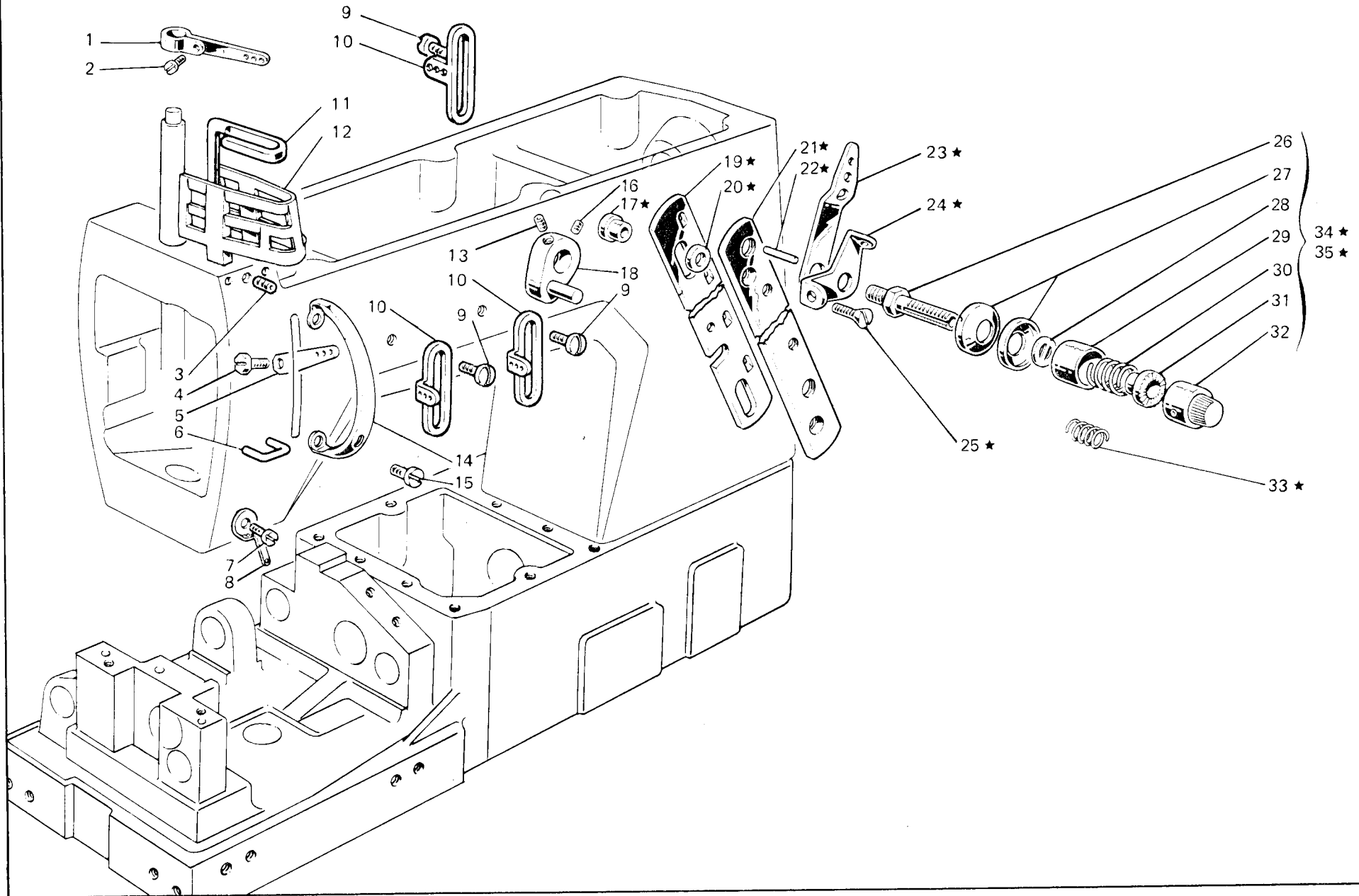


Fig. N. Abb. N.	Part. N. Piece N. Bestell N. Pieza N.	Qt. Anzahl	DESCRIZIONE	DESCRIPTION	DESCRIPTION	BENENNUNG	DESCRIPCION
★	308545-4-00	1	gruppo tensioni	tension assembly	groupe tension		
1	308452-2-00	1	tendifilo superiore	upper thread take-up	tendeur du fil supérieur		
2	742311-2-00	1	vite	screw	vis		
3	729012-2-00	3	vite	screw	vis		
4	308039-0-01	1	vite	screw	vis		
5	308239-0-00	1	tendifilo inferiore	lower thread take-up	tendeur du fil inférieur		
6	308137-0-00	1	cavallotto	coupling	cavalier		
7	724420-2-00	1	vite	screw	vis		
8	308890-0-00	1	passafilo	thread guide	passe-fil		
9	303045-0-10	3	vite	screw	vis		
10	308203-0-01	3	guidafilo	thread guide	guide-fil		
11	302136-0-12	1	passafilo	thread guide	passe-fil		
12	313375-0-01	1	protezione tendifilo superiore	upper thread take-up protection	protection tendeur du fil sup.		
13	745126-2-00	1	vite	screw	vis		
14	308107-0-01	1	protezione tendifilo inferiore	lower thread take-up protection	protection tendeur du fil inf.		
15	721444-2-00	2	vite	screw	vis		
16	727834-2-00	1	vite	screw	vis		
17	308512-0-00	2	distanziale	spacer	entretoise		
18	308495-2-01	1	leva sblocca tensione	lever	levier		
19	308510-0-00	1	slitta per tensione	slide	glissière		
20	701405-0-00	2	anello	ring	anneau		
21	308509-0-00	1	supporto	support	support		
22	308506-0-00	6	pernetto	pin	pivot		
23	308501-0-01	6	passafilo	thread guide	passe-fil		
24	308503-0-01	6	guidafilo	thread guide	guide-fil		
25	744676-2-00	2	vite	screw	vis		
26	308505-0-00	6	perno a vite	threaded pin	pivot à vis		
27	300218-0-10	12	disco tensione	tension disc	disque tension		
28	308507-0-00	6	rondella	washer	rondelle		
29	202556-0-01	6	scodellino	cup	cuvette		
30	200710-0-10	3	molla	spring	ressort		
31	202229-0-10	6	bussola superiore	upper bush	bague supérieur		
32	202558-2-01	6	pomolo	knob	pommeau		
33	200714-0-10	3	molla	spring	ressort		
34	308518-4-00	3	tensione superiore con molla rif. 30	upper tension with spring rif. 30	tension sup. avec ressort rif. 30		
35	308521-4-00	3	tensione inferiore con molla rif. 33	lower tension with spring rif. 33	tension inf. avec ressort rif. 33		

H 003022-1-08

H 003022-1-52

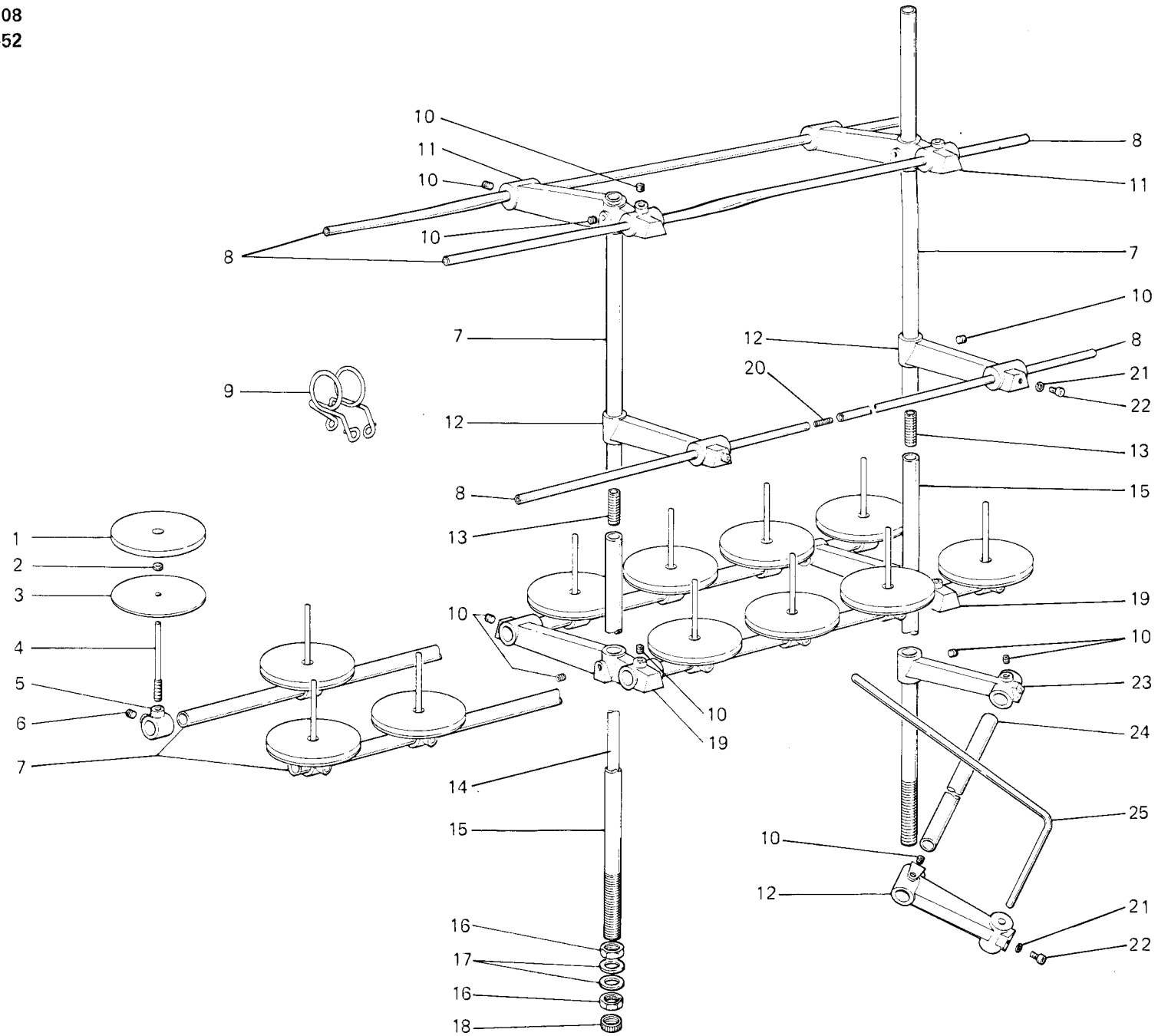


Fig. N. Abb. N.	Part. N. Piece N. Bestell N. Pieza N.	Qt. Anzahl	DESCRIZIONE	DESCRIPTION	DESCRIPTION	BENENNUNG	DESCRIPCION
—	991363-5-00	1	portabobine completo	bobbin carrier assembly	porte bobine complet		
1	991179-0-00	12	disco	disc	disque		
2	733508-2-00	14	dado	nut	écrou		
3	991112-0-00	12	piatto	disc	plateau		
4	992009-2-00	12	astina	rod	tige		
5	992006-2-00	12	portabobine	bobbin carrier	porte bobine		
6	729044-2-00	14	vite	screw	vis		
7	991375-0-00	6	tubo	pipe	tube		
8	991377-0-01	6	tubo per passafili	pipe for thread guide	tube pour passe-fil		
9	991640-0-00	40	passafilo	thread guide	passe-fil		
10	729445-2-00	17	vite	screw	vis		
11	991370-2-00	2	supporto tubi	pipe support	support tube		
12	991372-2-00	3	supporto tubi	pipe support	support tube		
13	991376-0-00	4	manicotto	coupling	manchon		
14	991382-0-00	1	tubo isolante	pipe	tube		
15	991374-0-00	2	tubo portabobine	bobbin carrier pipe	tube porte bobine		
16	733212-2-00	4	dado	nut	écrou		
17	704018-2-00	4	rosetta	washer	rondelle		
18	991383-0-00	1	coperchietto	cover	couvercle		
19	991371-2-00	2	supporto tubi	pipe support	support tube		
20	727098-0-00	3	vite	screw	vis		
21	703010-0-00	3	rosetta elastica	spring washer	rondelle élastique		
22	722464-2-00	3	vite	screw	vis		
23	991373-2-00	1	supporto tubi	pipe support	support tube		
24	991368-0-00	1	tubo	pipe	tube		
25	313566-0-00	1	tubo per passafili	pipe for thread guide	pipe pour passe-fil		

TAV. 3

H 003024-1-21

H 003024-1-04

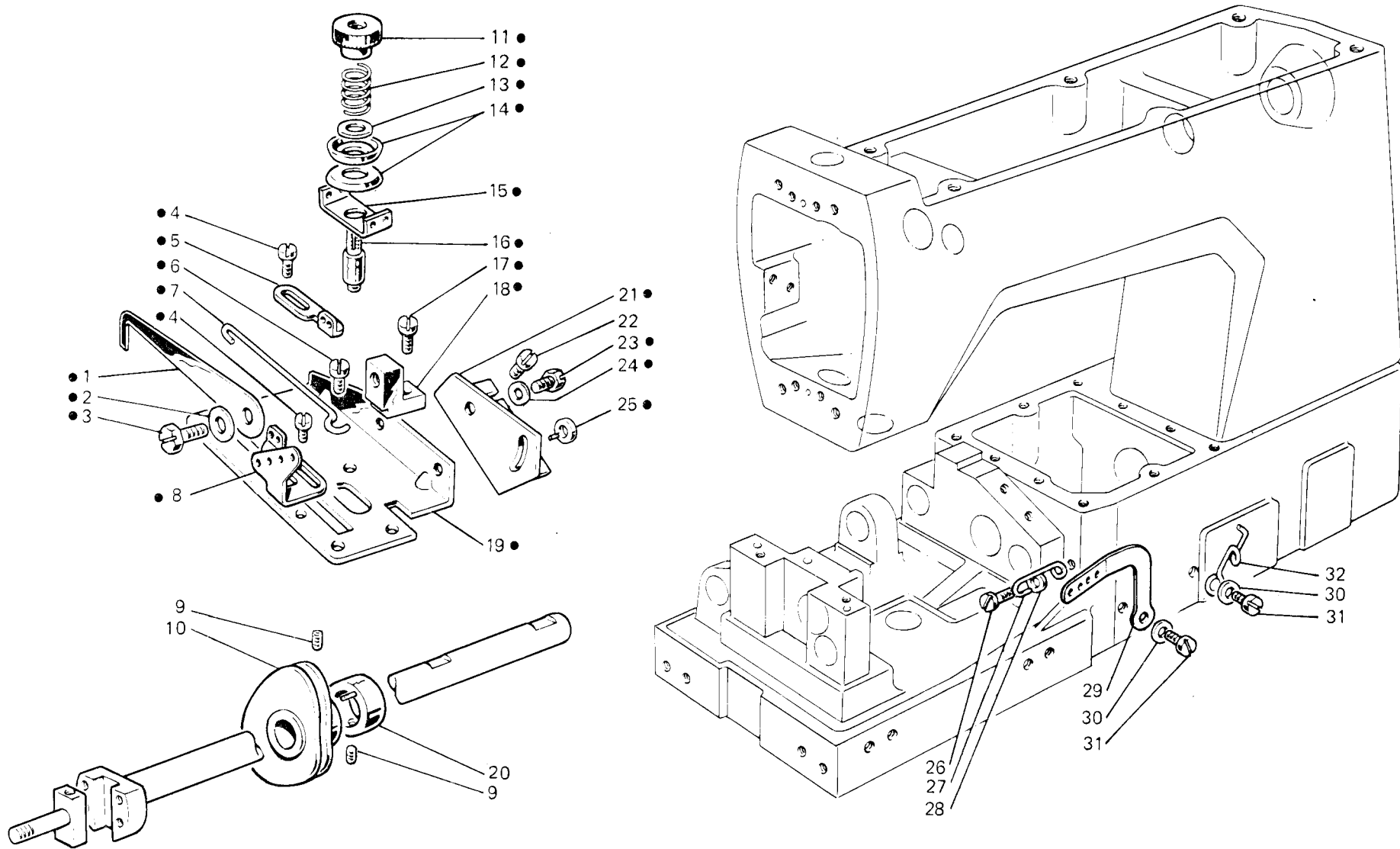


Fig. N. Abb. N.	Part. N. Bestell N. Pieça N. Pieza N.	Qt. Anzahl	DESCRIZIONE	DESCRIPTION	DESCRIPTION	BENENNUNG	DESCRIPCION
●	310376-4-00	1	gruppo tensione crochet inf.	lower looper tension ass.	groupe tension crochet inf.		
1	308556-0-00	1	astina	rod	tige		
2	705201-0-00	1	rosetta	washer	rondelle		
3	740220-2-00	1	vite	screw	vis		
4	741413-2-00	2	vite.	screw	vis		
5	310458-0-00	1	passafilo	thread guide	passe-fil		
6	741612-2-00	1	vite	screw	vis		
7	308558-0-00	1	traversino	tie-rod	traverse		
8	310460-0-01	1	passafilo	thread guide	passe-fil		
9	727215-0-00	2	vite	screw	vis		
10	308971-3-00	1	tendifilo a camma con viti	cam thread take-up with screw	tendeur du fil à came avec vis		
11	302204-0-10	1	pomolo	knob	pommeau		
12	300310-0-10	1	molla	spring	ressort		
13	704218-2-00	1	rosetta	washer	rondelle		
14	200324-0-10	2	dischi tensione	tension disc	disque tension		
15	310459-0-00	1	passafilo	thread guide	passe-fil		
16	300393-0-00	1	perno a vite	threaded pin	pivot à vis		
17	741642-2-00	1	vite	screw	vis		
18	302162-2-10	1	supporto	support	support		
19	310461-0-00	1	piastra porta tensioni	plate	plaque		
20	308967-2-01	1	anello limitatore	limiter ring	bague limiteur		
21	308551-0-00	1	squadretta	bracket	équerre		
22	721444-2-00	2	vite	screw	vis		
23	740210-2-00	2	vite	screw	vis		
24	704104-2-00	1	rosetta	washer	rondelle		
25	206580-2-00	1	rosetta con spina	washer with pin	rondelle avec goupille		
26	741682-0-00	1	vite	screw	vis		
27	704302-4-00	1	rosetta	washer	rondelle		
28	310433-0-01	1	passafilo	thread guide	passe-fil		
29	310457-0-00	1	passafilo	thread guide	passe-fil		
30	704210-4-00	2	rosetta	washer	rondelle		
31	300483-0-10	2	vite	screw	vis		
32	311098-0-00	1	passafilo	thread guide	passe-fil		

TAV. 4

H 003046-0-00
 H 003046-1-38
 H 003046-1-52
 H 003046-1-63
 H 003046-1-95
 H 003048-0-01
 H 003048-1-22

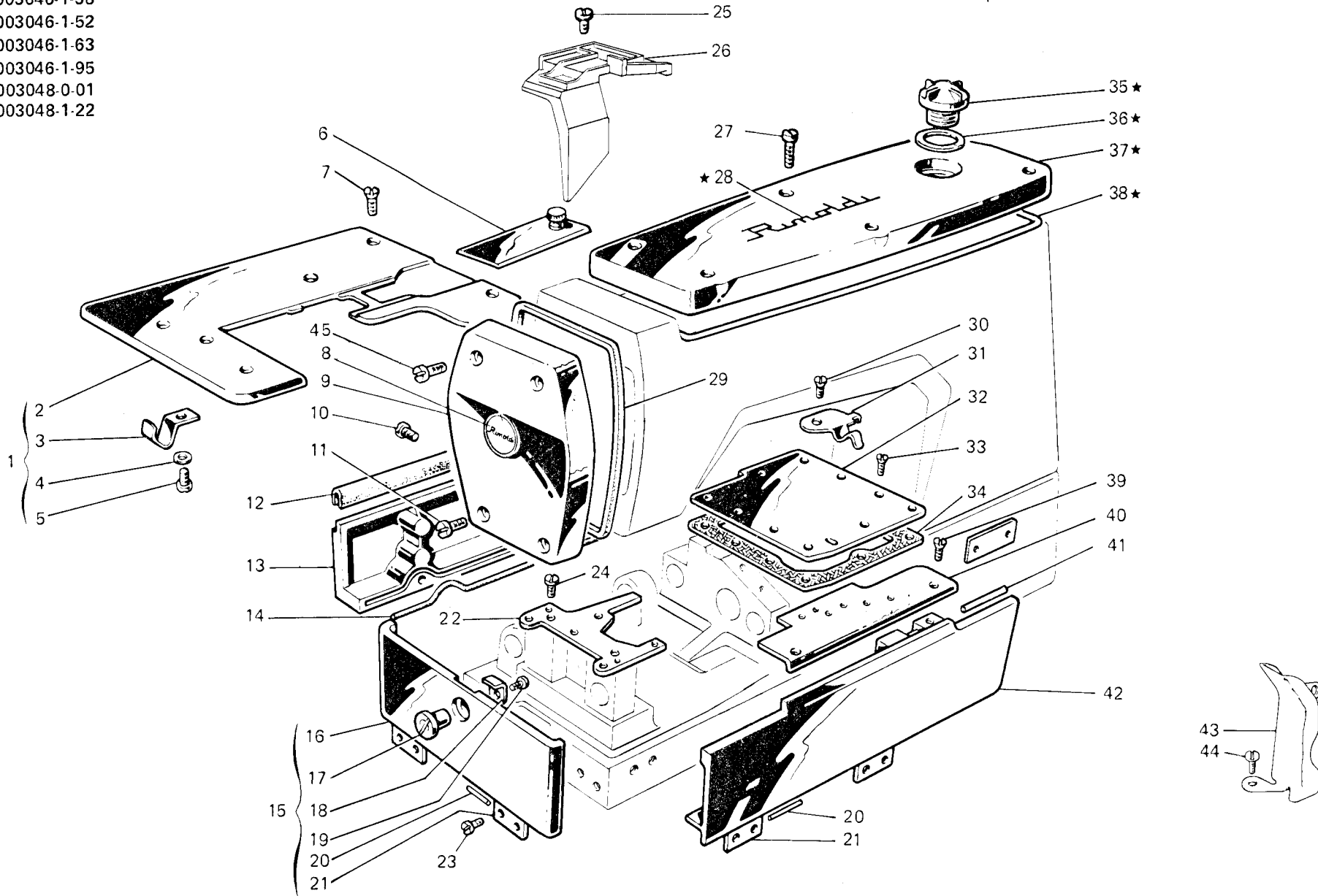


Fig. N. Abb. N.	Part. N. Piece N. Bestell N. Pieza N.	Qt. Anzahl	DESCRIZIONE	DESCRIPTION	DESCRIPTION	BENENNUNG	DESCRIPCION
★	308103-4-00	1	coperchio superiore completo	upper cover assembly	couvercle supérieur complet		
1	309059-4-00	1	piano di lavoro completo	working plate assembly	plan de travail complet		
2	309042-2-00	1	piano di lavoro con piastrina	working plate	plan de travail		
3	309351-0-00	1	molla	spring	ressort		
4	704306-0-01	1	rosetta	washer	rondelle		
5	720411-2-00	1	vite	screw	vis		
6	309302-2-00	1	coperchio scorrevole	sliding cover	couvercle coulissant		
7	744636-2-00	4	vite	screw	vis		
8	304662-0-10	1	targhetta	plate	plaque		
9	308101-2-01	1	coperchio laterale	side cover	couvercle latéral		
10	741088-2-00	3	vite	screw	vis		
11	302353-0-10	2	vite	screw	vis		
12	309088-0-01	1	guarnizione	gasket	garniture		
13	309086-0-01	1	carter posteriore	rear cover	carter arrière		
14	309084-0-00	1	guarnizione	gasket	garniture		
15	309139-4-00	1	carter laterale completo	side cover assembly	carter latéral complet		
16	309126-3-00	1	carter laterale	side cover	carter latéral		
17	309372-0-00	1	perno	pin	pivot		
18	309371-0-00	1	chiavistello	key	clé		
19	741658-2-00	1	vite	screw	vis		
20	707556-0-00	4	spina elastica	split pin	goupille réglable		
21	309332-0-00	4	cerniera	hinge	charnière		
22	308783-2-00	1	piastra porta placca	plate	plaque		
23	300483-0-10	8	vite	screw	vis		
24	302355-0-10	2	vite	screw	vis		
25	721444-2-00	1	vite	screw	vis		
26	308138-0-12	1	carter paraolio	oil retainer cover	carter pare-huile		
27	742282-2-00	6	vite	screw	vis		
28	300006-0-12	2	decalcomania	decalcomania	décalcomanie		
29	308128-0-01	1	guarnizione coperchio	cover gasket	garniture couvercle		
30	721474-2-00	1	vite	screw	vis		
31	309360-0-00	1	molla chiusura carter	spring	ressort		
32	309324-2-10	1	piastra superiore	upper plate	plaque supérieur		
33	741936-2-00	9	vite	screw	vis		
34	309323-0-00	1	garnizione	gasket	garniture		
35	202239-0-10	1	cupolina	cup	coupole		
36	705970-0-00	1	guarnizione per cupolina	gasket for cup	garniture pour coupole		
37	308102-0-10	1	coperchio superiore	upper cover	couvercle supérieur		
38	308129-0-01	1	guarnizione per coperchio	gasket for cover	garniture pour couvercle		
39	744656-2-00	2	vite	screw	vis		
40	309277-0-00	1	piastra piano di lavoro	working plate	plate plan de travail		
41	707518-0-00	1	spina elastica	split pin	goupille réglable		
42	309177-3-00	1	carter anteriore completo	front cover assembly	carter avant complet		
43	309352-0-00	1	carterino	cover	carter		
44	722084-2-00	1	vite	screw	vis		
45	302354-0-20	2	vite	screw	vis		

TAV. 5

H 003014 0 00

H 003014 1 01

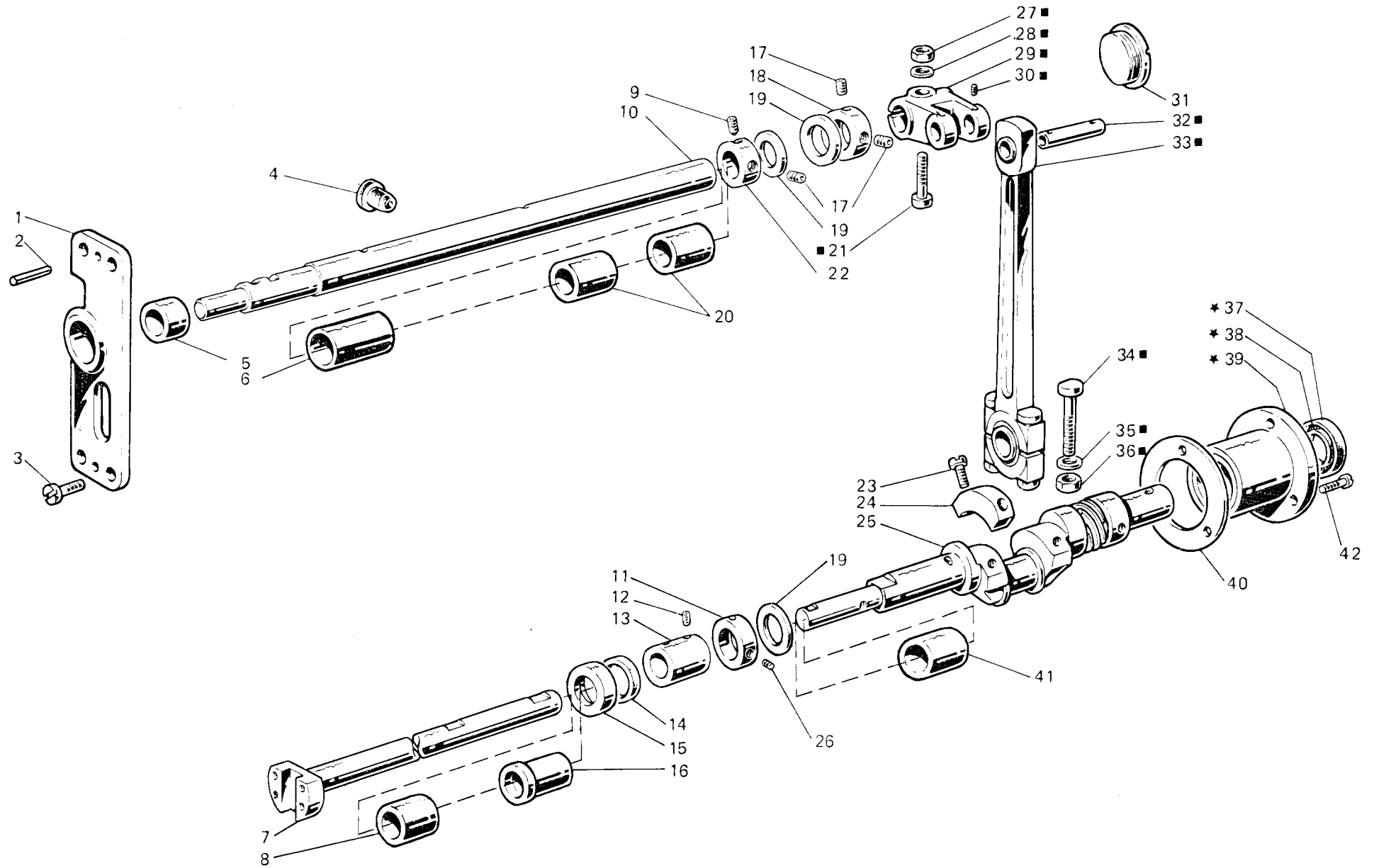


Fig. N. Abb. N.	Part. N. Piece N. Bestell N. Pieza N.	Qt. Anzahl	DESCRIZIONE	DESCRIPTION	DESCRIPTION	BENENNUNG	DESCRIPCION
■	308178-4-01	1	gruppo biella principale	main con-rod assembly	groupe bielle principale		
★	308013-4-02	1	bussola destra completa	right bush assembly	bague droite compl.		
1	308859-2-00	1	supporto con bussola rif. 5	support with bush rif. 5	support avec bague rif. 5		
2	706454-0-00	2	spina	pin	goupille		
3	722084-2-00	4	vite	screw	vis		
4	303501-0-10	1	tappo per foro tendifilo	plug	bouchon		
5	308858-0-00	1	bussola	bush	bague		
6	308852-0-00	1	bussola	bush	bague		
7	308381-2-00	1	semialbero inf. sinistro	left lower half-shaft	semi-arbre inférieur gauche		
8	308293-0-02	1	bussola	bush	bague		
9	730032-2-00	1	vite	screw	vis		
10	308851-2-01	1	albero superiore	upper shaft	arbre supérieur		
11	308084-2-00	1	anello di registro	adjustment ring	bague de réglage		
12	745827-2-00	4	vite per manicotto	screw	vis		
13	308015-0-00	1	manicotto	coupling	manchon		
14	308119-0-00	1	anello di tenuta	retainer ring	bague d'étanchéité		
15	308891-0-00	1	cappuccio	cap	capuchon		
16	308009-0-00	1	bussola	bush	bague		
17	729013-2-00	3	vite	screw	vis		
18	309830-2-00	1	anello di registro	adjustment ring	bague de réglage		
19	704869-0-00	3	rondella	washer	rondelle		
20	308853-0-00	2	bussola	bush	bague		
21	308035-0-00	1	vite	screw	vis		
22	309831-2-00	1	anello di registro	adjustment ring	bague de réglage		
23	741056-0-00	4	vite	screw	vis		
24	302272-0-10	2	settore	sector	secteur		
25	308714-3-00	1	semialbero inf. destro	right lower half-shaft	semi-arbre inf. droite		
26	745815-2-00	2	vite	screw	vis		
27	746408-2-00	1	dado	nut	écrou		
28	705013-0-00	1	rondella	washer	rondelle		
29	308159-2-01	1	manovella	crank	manivelle		
30	745812-2-00	2	vite	screw	vis		
31	302356-0-10	1	tappo	plug	bouchon		
32	308166-0-00	1	perno	pin	pivot		
33	308174-3-01	1	biella principale completa	main con-rod assembly	bielle principale complète		
34	308161-0-00	2	vite	screw	vis		
35	308149-0-01	2	rondella	washer	rondelle		
36	308162-0-00	2	dado	nut	écrou		
37	700596-0-00	1	anello di tenuta	retainer ring	bague d'étanchéité		
38	308389-0-00	1	anello elastico	spring ring	anneau ressort		
39	308012-2-10	1	bussola	bush	bague		
40	308127-0-00	1	guarnizione	gasket	garniture		
41	308086-0-10	1	bussola	bush	bague		
42	742222-2-00	3	vite	screw	vis		

TAV. 6

H 003018-0-02

H 003018-1-27

H 003020-1-03

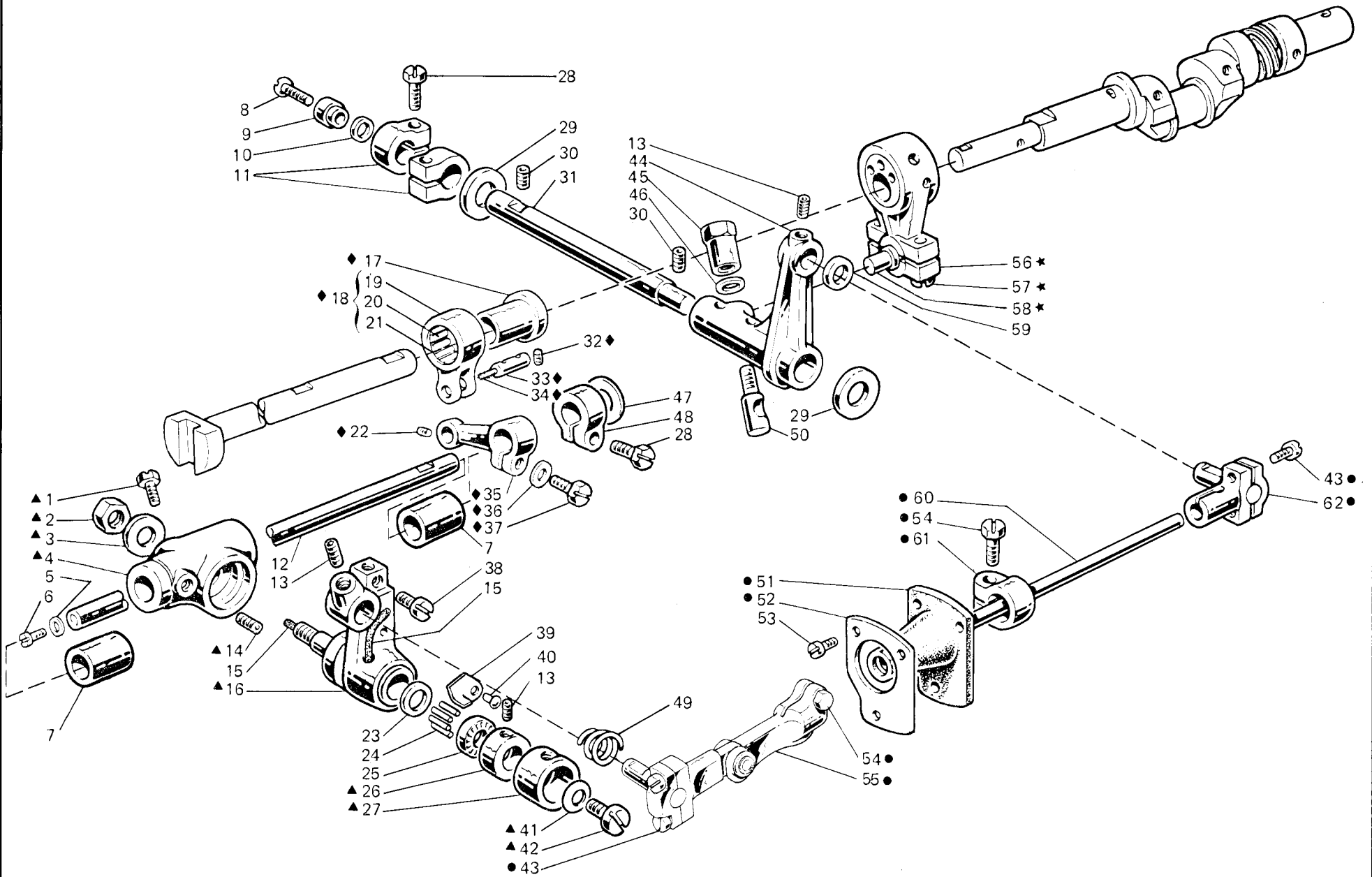


Fig. N. Abb. N.	Part. N. Piecce N. Bestell N. Pieza N.	Qt. Anzahl	DESCRIZIONE	DESCRIPTION	DESCRIPTION	BENENNUNG	DESCRIPTION
★	310350-4-00	1	biella con eccentrico e viti compl.	con-rod with eccentric and screw ass.	bielle avec excentrique et vis compl.		
▲	312850-4-00	1	gruppo porta crochet	looper holder assembly	groupe porte crochet		
◆	308341-4-00	1	gruppo comando crochet	looper control assembly	groupe commande crochet		
●	308459-4-00	1	gruppo comando crochet inf.	lower looper control assembly	groupe com. crochet inférieur		
1	740226-0-00	1	vite	screw	vis		
2	202474-0-10	1	dado	nut	écrou		
3	704226-2-00	1	rosetta	washer	rondelle		
4	308140-0-00	1	supporto del porta crochet	support	support		
5	705734-0-00	1	guarnizione	gasket	garniture		
6	202397-0-10	1	vite	screw	vis		
7	308297-0-00	2	bussola	bush	bague		
8	744676-2-00	1	vite	screw	vis		
9	308047-0-00	1	scodellino	cup	cuvette		
10	701009-0-00	1	anello di tenuta	retainer ring	bague d'étanchéité		
11	308046-2-01	2	fascetta	clamp	bride		
12	308291-0-01	1	perno per supporto	pin	pivot		
13	745815-2-00	3	vite	screw	vis		
14	730033-2-00	1	vite	screw	vis		
15	778827-0-00	2	stoppino	wick	mèche		
16	312819-3-00	1	porta crochet completo	looper holder assembly	porte crochet complet		
17	308030-2-00	1	eccentrico	eccentric	excentrique		
18	301459-4-10	1	giunto completo	joint assembly	joint complet		
19	301458-0-10	1	giunto	joint	joint		
20	301579-0-10	1	gabbia a rullini	needles cage	cage à aiguilles		
21	201143-0-10	2	anello di tenuta	retainer ring	bague d'étanchéité		
22	729011-2-00	1	vite	screw	vis		
23	703810-0-00	1	distanziale	spacer	entretoise		
24	302276-0-10	40	rullini	roller	rouleau		
25	303539-0-00	2	reggispinta	thrust bearing	butée		
26	302052-2-21	1	ghiera	ring nut	collier		
27	303538-0-00	1	cappellotto di protezione	protection cap	capuchon de protection		
28	300482-0-10	3	vite	screw	vis		
29	704849-0-00	2	rosetta	washer	rondelle		
30	729434-2-00	2	vite	screw	vis		
31	308044-0-00	1	perno per supporto	pin	pivot		
32	727215-0-00	2	vite	screw	vis		
33	300209-0-10	1	perno	pin	pivot		
34	778238-0-00	1	stoppino	wick	mèche		
35	303459-2-11	1	braccio	arm	bras		
36	704218-2-00	1	rosetta	washer	rondelle		
37	300377-0-10	1	vite	screw	vis		
38	745812-2-00	3	vite	screw	vis		
39	308272-0-00	1	piastrina	plate	plaque		
40	308273-0-00	1	rivetto	rivet	rivet		
41	702403-0-00	1	molla a tazza	cup spring	ressort à tasse		
42	742423-0-00	1	vite	screw	vis		
43	744040-2-00	4	vite	screw	vis		
44	308045-0-01	1	supporto oscillante	support	support		



TAV. 6

H 003018-0-02

H 003018-1-27

H 003020-1-03

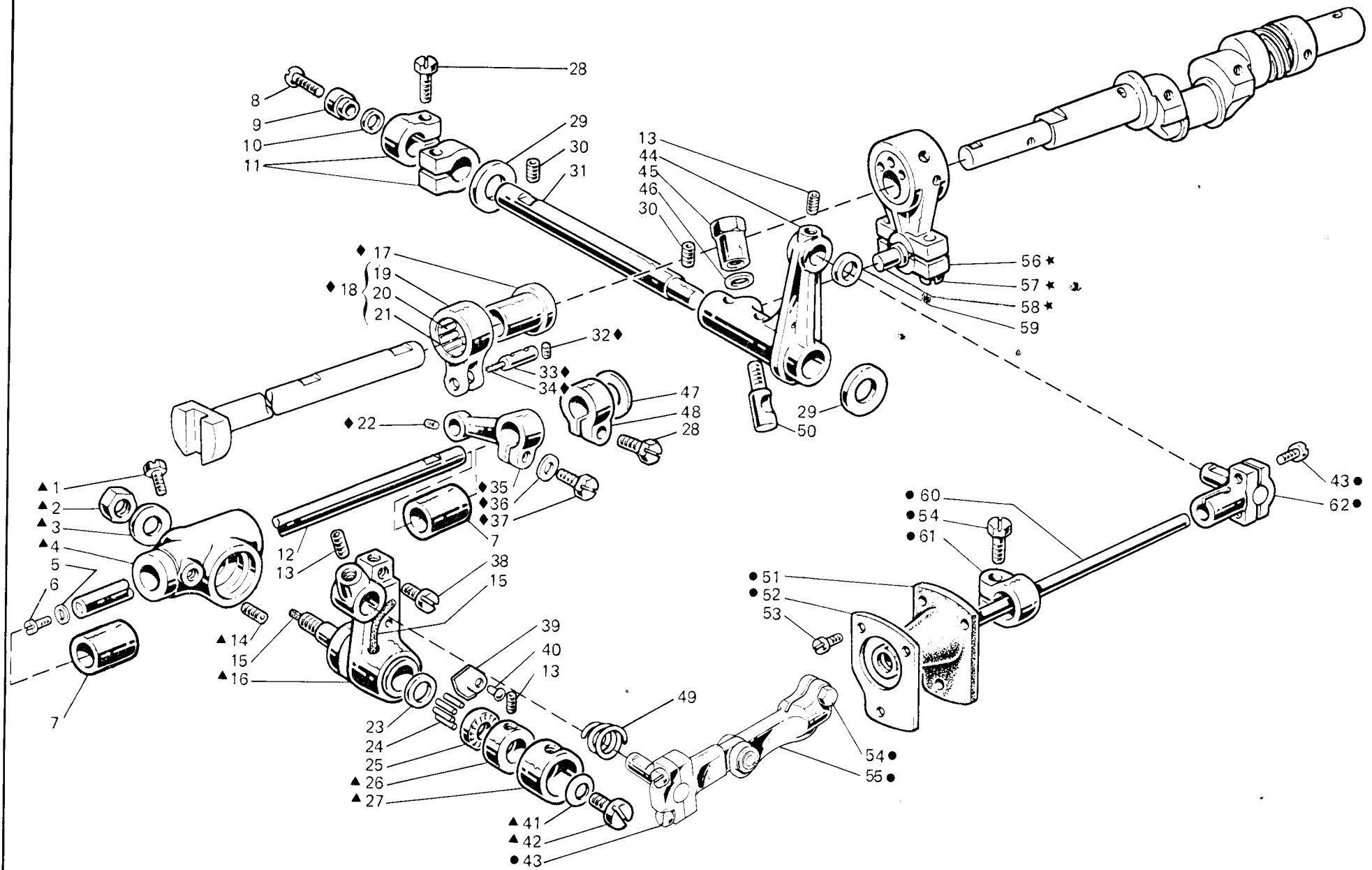


Fig. N. Abb. N.	Part. N. Piece N. Bestell N. Pieza N.	Qt. Anzahl	DESCRIZIONE	DESCRIPTION	DESCRIPTION	BENENNUNG	DESCRIPCION
45	300351-0-11	1	dado	nut	écrou		
46	704309-4-00	1	rosetta	washer	rondelle		
47	704846-0-00	1	rosetta	washer	rondelle		
48	300469-2-11	1	fascetta	clamp	bride		
49	302289-0-10	1	molla	spring	ressort		
50	300352-0-10	1	spina filettata	pin	goupille		
51	308330-3-00	1	manicotto paraolio	oil protection	manchon pare huile		
52	308327-0-00	1	mascherina per manicotto	flange	flasque		
53	741675-2-00	2	vite	screw	vis		
54	305194-0-00	2	vite	screw	vis		
55	308458-3-00	1	testa di biella	con-rod big end	tête de bielle		
56	308253-3-00	1	biella con eccentrico	con-rod with eccentric	bielle avec excentrique		
57	308882-0-00	2	vite	screw	vis		
58	308310-0-00	1	perno a sfera	ball joint	pivot à sphere		
59	705834-0-00	1	rosetta in fibra	washer	rondella		
60	308334-0-00	1	tirante per biella	tie-rod	tirante pour bielle		
61	308326-2-01	1	fascetta	clamp	bride		
62	308325-3-00	1	testa di biella	con-rod big end	tête de bielle		

H 003010-0-00
 H 003010-1-03
 H 003016-0-00
 H 003020-1-02

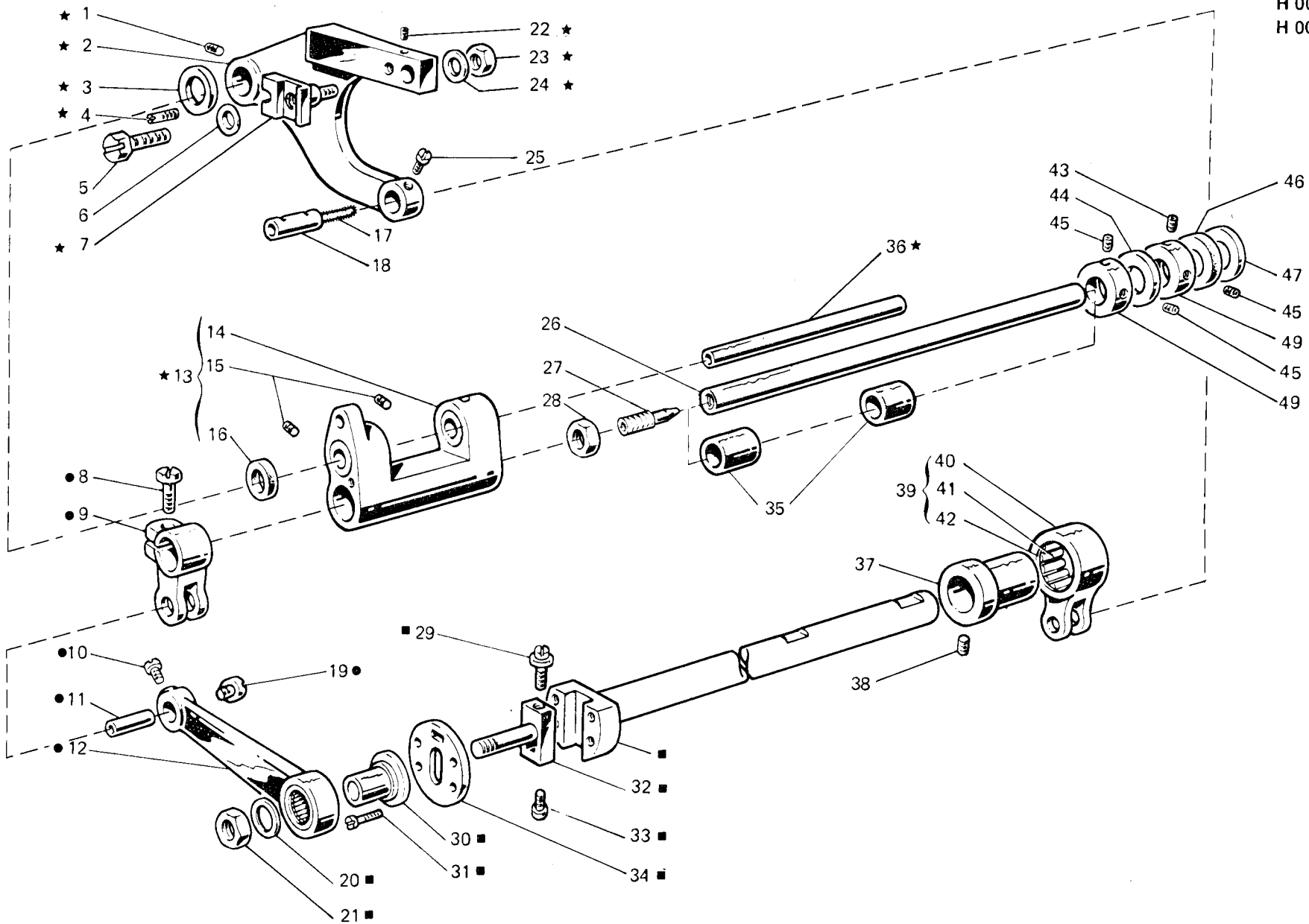


Fig. N. Abb. N.	Part. N. Piece N. Bestell N. Pieza N.	Qt. Anzahl	DESCRIZIONE	DESCRIPTION	DESCRIPTION	BENENNUNG	DESCRIPTION
●	308286-4-00	1	gruppo leva	lever assembly	groupe levier		
★	308418-4-00	1	gruppo porta griffa	feed dog holder assembly	groupe porte griffe		
■	308358-4-01	1	semialbero inferiore completo	lower half-shaft assembly	semi-arbre inférieur complet		
1	745815-2-00	1	vite	screw	vis		
2	307676-0-00	1	braccio porta griffa	arm	bras		
3	309562-0-00	2	rondella	washer	rondelle		
4	304612-0-10	1	perno eccentrico	eccentric pin	pivot excentrique		
5	304684-0-10	1	vite	screw	vis		
6	704406-0-00	1	rondella	washer	rondelle		
7	304616-0-11	1	squadretta	bracket	équerre		
8	202486-0-10	1	vite	screw	vis		
9	301519-2-11	1	attacco	coupling	raccord		
10	742813-0-00	1	vite	screw	vis		
11	308285-2-02	1	perno	pin	pivot		
12	308283-2-10	1	leva comando porta griffa	lever	levier		
13	308191-4-01	1	supporto oscillante	support	support		
14	308193-2-01	1	supporto con vite	support with screw	support avec vis		
15	729013-2-00	2	vite	screw	vis		
16	308190-0-00	2	anello di tenuta	retainer ring	bague d'étanchéité		
17	778238-0-00	1	stoppino	wick	mèche		
18	300209-0-10	1	perno	pin	pivot		
19	304640-0-10	1	vite	screw	vis		
20	704814-0-00	1	rondella	washer	rondelle		
21	746612-2-00	1	dado	nut	écrou		
22	745812-2-00	1	vite	screw	vis		
23	746407-2-00	1	dado	nut	écrou		
24	704226-2-00	1	rondella	washer	rondelle		
25	742811-0-00	1	vite	screw	vis		
26	308289-4-11	1	contralbero trasporto completo	transport countershaft assembly	axe transport complet		
27	308294-0-00	1	limitatore portata olio	limiter	limiteur		
28	746406-2-00	1	dado	nut	écrou		
29	308281-0-00	1	vite di registro	adjustment screw	vis de réglage		
30	303458-0-12	1	bussola	bush	bague		
31	724441-0-00	4	vite	screw	vis		
32	308278-0-01	1	perno	pin	pivot		
33	308780-2-00	1	vite di registro	adjustment screw	vis de réglage		
34	308774-2-00	1	piastra disco	disc plate	plaque disque		
35	308296-0-00	2	bussola	bush	bague		
36	308195-0-00	1	perno	pin	pivot		
37	308029-2-00	1	eccentrico	eccentric	excentrique		
38	727215-0-00	2	vite	screw	vis		
39	301459-4-10	1	giunto completo	joint assembly	joint complet		
40	301458-0-10	1	giunto	joint	joint		
41	301379-0-10	1	gabbia a rullini	needles cage	cage à aiguilles		
42	201143-0-10	2	anello di tenuta	retainer ring	bague d'étanchéité		
43	728232-0-00	1	vite	screw	vis		
44	704846-0-00	1	rosetta	washer	rondelle		
45	745136-2-00	3	vite	screw	vis		



H 003010-0-00
 H 003010-1-03
 H 003016-0-00
 H 003020-1-02

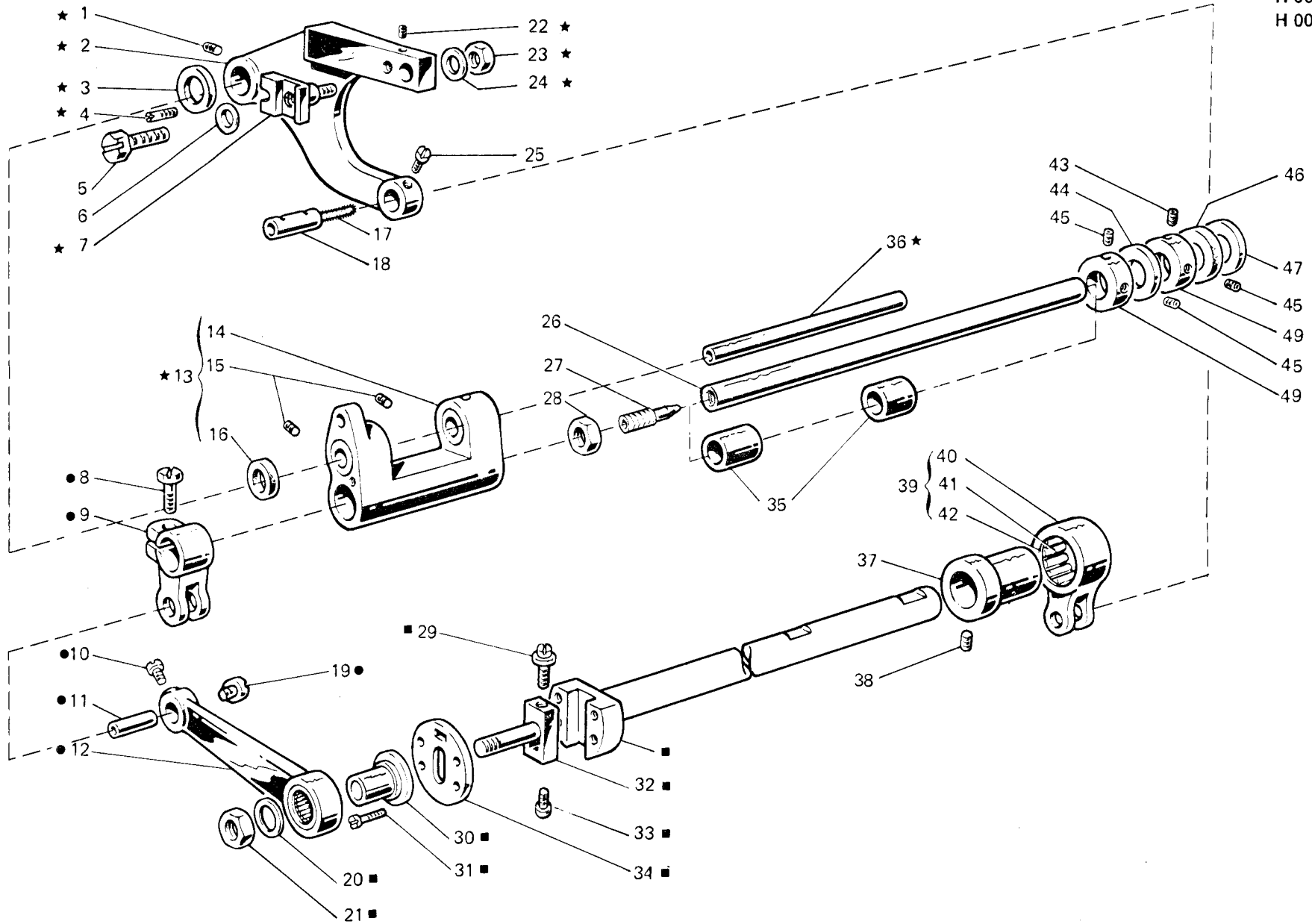


Fig. N. Abb. N.	Part. N. Piece N. Bestell. N. Pieza N.	Qt. Anzahl	DESCRIZIONE	DESCRIPTION	DESCRIPTION	BENENNUNG	DESCRIPTION
46	308287-0-00	1	anello di tenuta	retainer ring	·bague d'étanchéité		
47	704347-0-00	1	rondella	washer	rondelle		
48	309839-2-00	1	anello di registro	adjustment ring	bague de réglage		
49	309838-2-00	1	anello di registro	adjustment ring	bague de réglage		

TAV. 8

H 003008-0-00

H 003008-1-07

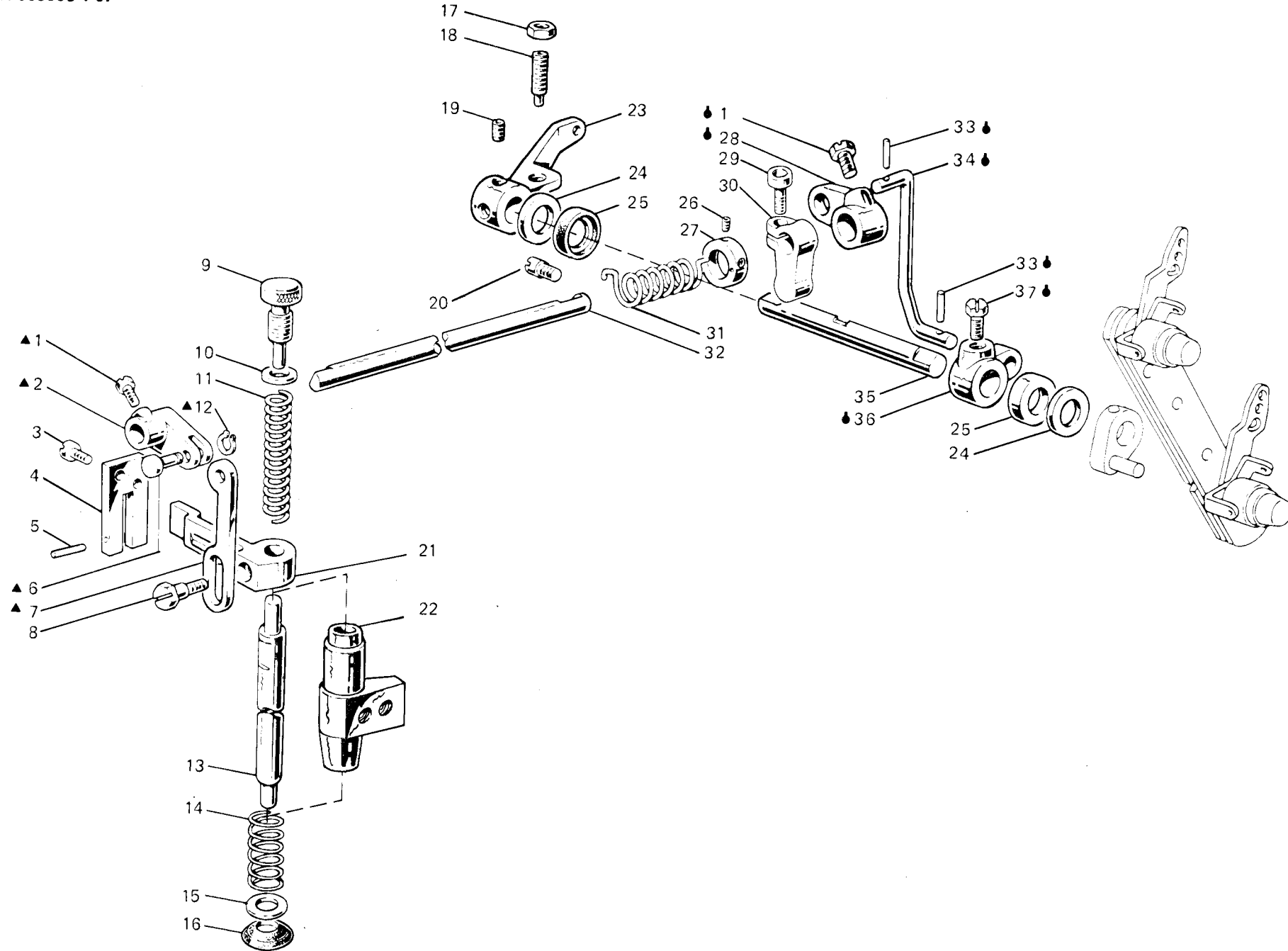
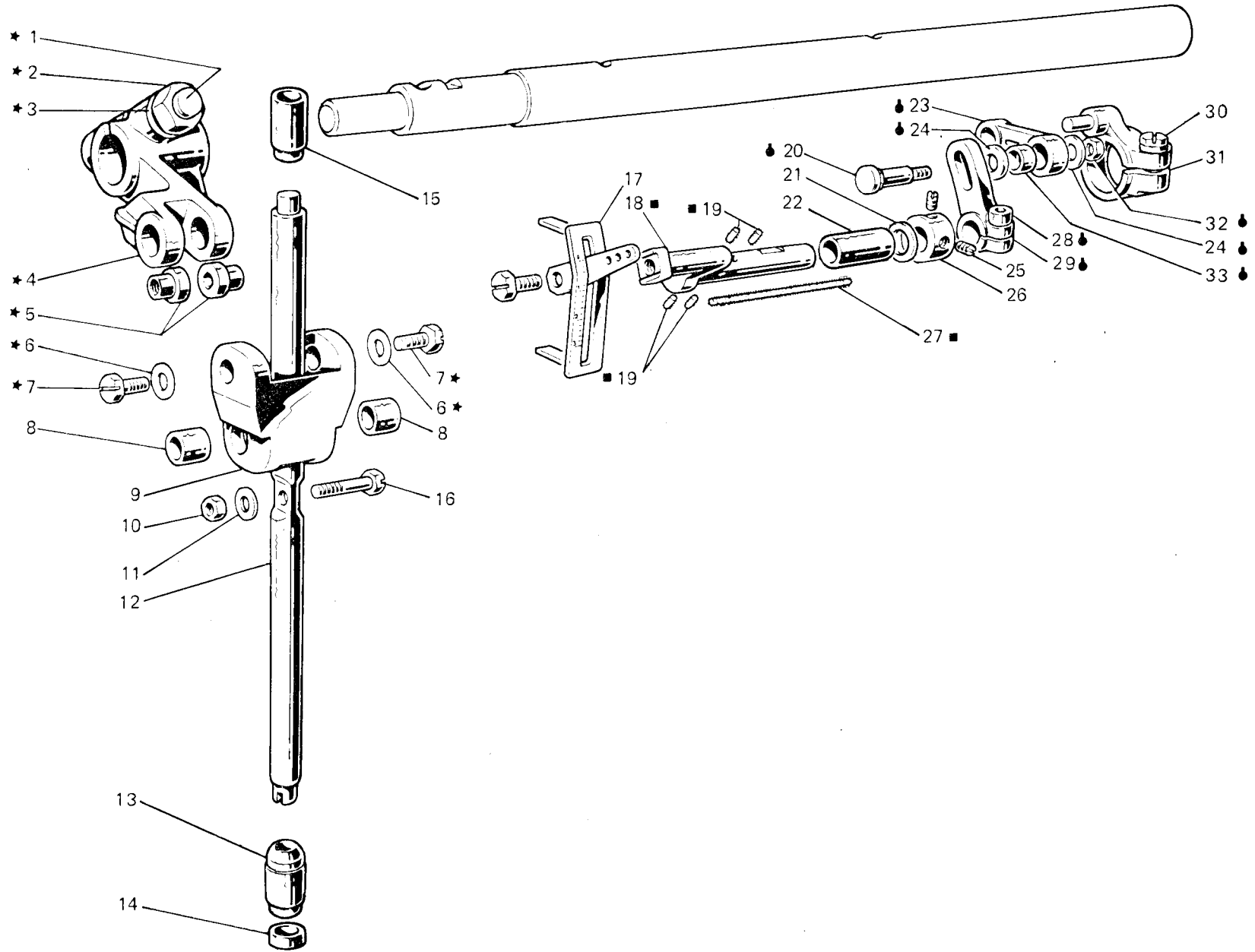


Fig. N. Abb. N.	Part. N. Piece N. Bestell N. Pieza N.	Qt. Anzahl	DESCRIZIONE	DESCRIPTION	DESCRIPTION	BENENNUNG	DESCRIPTION
◆	308320-4-00	1	tirante con leva	tie-rod with lever	tirant avec levier		
▲	308060-4-00	1	gruppo manovella tirante premist.	crank assembly	groupe manivelle		
1	740632-2-00	2	vite	screw	vis		
2	308059-0-01	1	manovella	crank	manivelle		
3	721494-2-00	2	vite	screw	vis		
4	308056-0-01	1	piastra	plate	plaque		
5	707240-0-00	1	spina elastica	split pin	goupille réglable		
6	308058-0-00	1	spina	pin	goupille		
7	308057-0-00	1	tirante per alzapedino	tie-rod	tirant		
8	740444-2-00	1	vite	screw	vis		
9	302060-0-11	1	pomolo di regolazione	adjustment knob	pommeau de réglage		
10	302344-0-10	1	rosetta	washer	rondelle		
11	302059-0-10	1	molla premi piedino	spring	ressort		
12	700205-0-00	1	anello elastico	spring ring	anneau ressort		
13	308061-0-01	1	barra porta piedino	presserfoot bar	barre porte pied de biche		
14	308148-0-00	1	molla	spring	ressort		
15	704236-2-00	1	rosetta	washer	rondelle		
16	308054-0-01	1	paraolio	oil retainer	pare-huile		
17	746204-0-00	1	dado	nut	écrou		
18	729884-2-00	1	vite	screw	vis		
19	729034-2-00	2	vite	screw	vis		
20	308007-0-00	1	perno filettato	threaded pin	pivot fileté		
21	308055-2-00	1	guida a forcella	fork guide	guide à fourchette		
22	308051-0-01	1	bussola	bush	bague		
23	308062-2-00	1	leva comando alza piedino	lever	levier		
24	704240-2-00	2	rosetta	washer	rondelle		
25	304763-0-10	2	anello di tenuta	retainer ring	bague d'étanchéité		
26	745827-2-00	2	vite	screw	vis		
27	304767-2-11	1	anello	ring	anneau		
28	302232-0-10	1	leva superiore	upper lever	levier supérieur		
29	202487-0-10	1	vite	screw	vis		
30	308412-2-00	1	fascetta	clamp	bride		
31	308098-0-00	1	molla di torsione	spring	ressort		
32	302234-0-10	1	albero	shaft	arbre		
33	707241-0-00	2	spina elastica	split pin	goupille réglable		
34	308231-0-00	1	tirante	tie-rod	tirant		
35	308996-0-01	1	albero comando alza piedino	shaft	arbre		
36	302238-0-11	1	leva per tirante	lever	levier		
37	740034-0-00	1	vite	screw	vis		

TAV. 9

H 003004-0-00
H 003006-0-02



TAV. 10

H 003002-0-00
H 003002-1-12

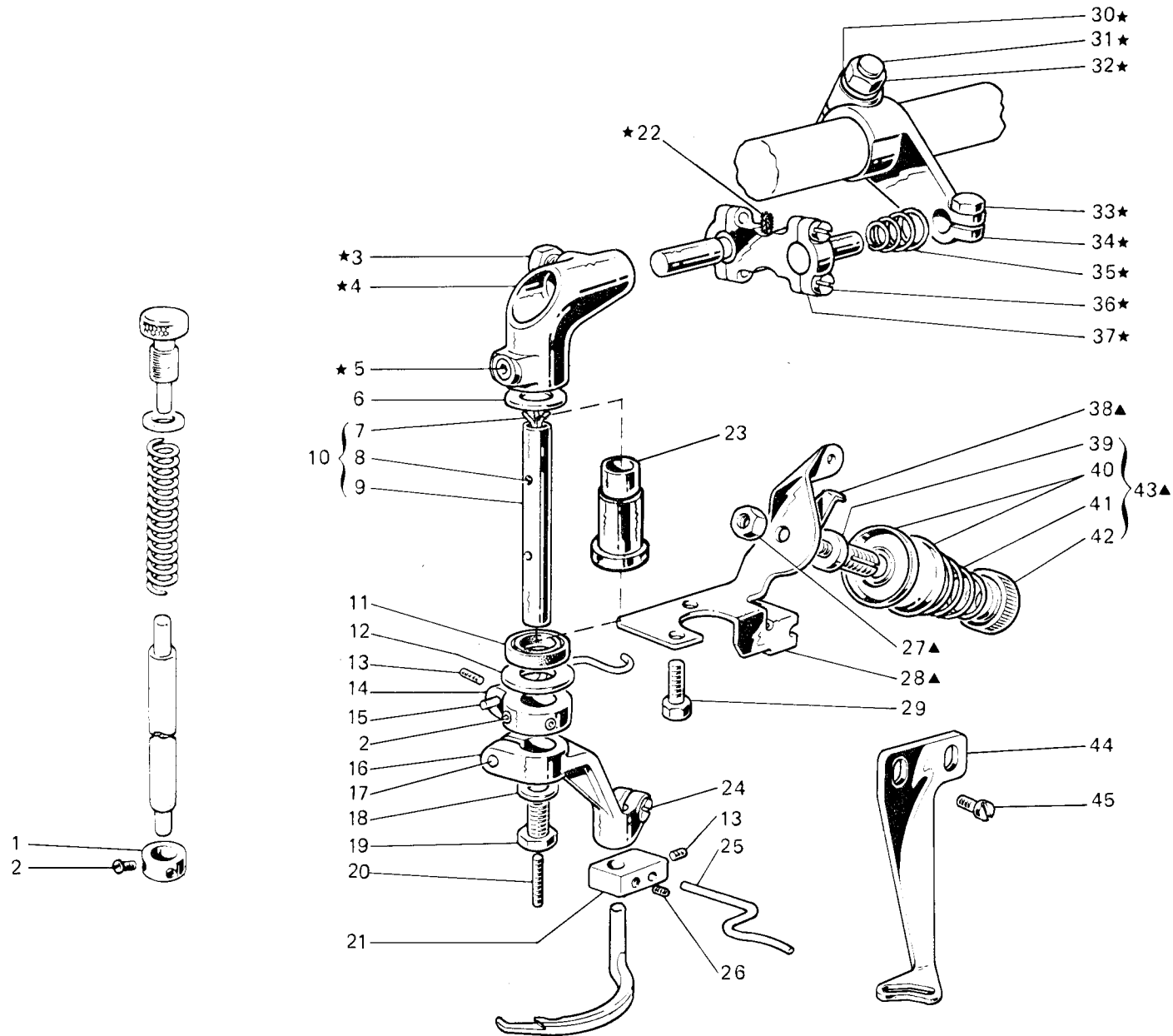


Fig. N. Abb. N.	Part. N. Piece N. Bestell N. Pieza N.	Qt. Anzahl	DESCRIZIONE	DESCRIPTION	DESCRIPTION	BENENNUNG	DESCRIPTION
★	308079-4-00	1	gruppo crochet di copertura	looper assembly	groupe crochet		
▲	308867-4-00	1	gruppo tensione copertura	tension assembly	groupe tension		
1	308076-2-01	1	anello di registro	adjustment ring	bague de réglage		
2	745812-2-00	4	vite	screw	vis		
3	740226-0-00	1	vite	screw	vis		
4	308072-2-00	1	raccordo	pipe connection	raccord		
5	730033-2-00	1	vite	screw	vis		
6	309562-0-00	1	rosetta	washer	rondelle		
7	778502-0-00	1	stoppino	wick	mèche		
8	778204-0-00	4	stoppino	wick	mèche		
9	308073-0-01	1	perno	pin	pivot		
10	308081-4-01	1	perno verticale	pin	pivot		
11	308075-0-00	1	anello di tenuta	retainer ring	bague d'étanchéité		
12	704835-0-00	1	rosetta	washer	rondelle		
13	745800-2-00	2	vite	screw	vis		
14	308868-2-00	1	anello porta astina	ring	anneau		
15	308869-0-00	1	astina tendifilo	rod	tige		
16	308077-2-01	1	porta crochet	looper holder	porte crochet		
17	721494-2-00	1	vite	screw	vis		
18	704309-4-00	1	rosetta	washer	rondelle		
19	308078-0-00	1	vite registro	adjustment ring	bague de réglage		
20	729051-2-00	1	vite	screw	vis		
21	309692-2-01	1	blocchetto	block	bloc		
22	778707-0-00	1	stoppino	wick	mèche		
23	308074-0-00	1	bussola	bush	bague		
24	741724-0-00	1	vite	screw	vis		
25	309691-0-00	1	astina spostafilo	rod	tige		
26	721433-2-00	1	vite	screw	vis		
27	746007-2-00	1	dado	nut	écrou		
28	308865-0-00	1	piastra	plate	plaque		
29	740236-0-00	2	vite	screw	vis		
30	705013-0-00	1	rosetta	washer	rondelle		
31	308855-0-00	1	perno a vite	threaded pin	pivot à vis		
32	746408-2-00	1	dado	nut	écrou		
33	302347-0-10	1	vite	screw	vis		
34	308065-2-00	1	manovella albero	shaft crank	manivelle arbre		
35	308269-0-00	1	molla	spring	ressort		
36	308067-0-00	4	vite	screw	vis		
37	308071-3-01	1	gruppo manovella	crank assembly	groupe manivelle		
38	308874-0-00	1	passafilo	thread guide	passe-fil		
39	308862-0-01	1	perno a vite	threaded pin	pivot à vis		
40	308863-0-00	2	disco tensione	tension disc	disque tension		
41	308860-0-00	1	molla	spring	ressort		
42	308861-0-00	1	pomolo	knob	pommeau		
43	308864-4-00	1	gruppo tensione	tension assembly	groupe tension		
44	308753-0-00	1	passafilo	thread guide	passe-fil		
45	741658-2-00	2	vite	screw	vis		

TAV. 11

H 003012-0-00

H 003012-1-00

H 003012-1-05

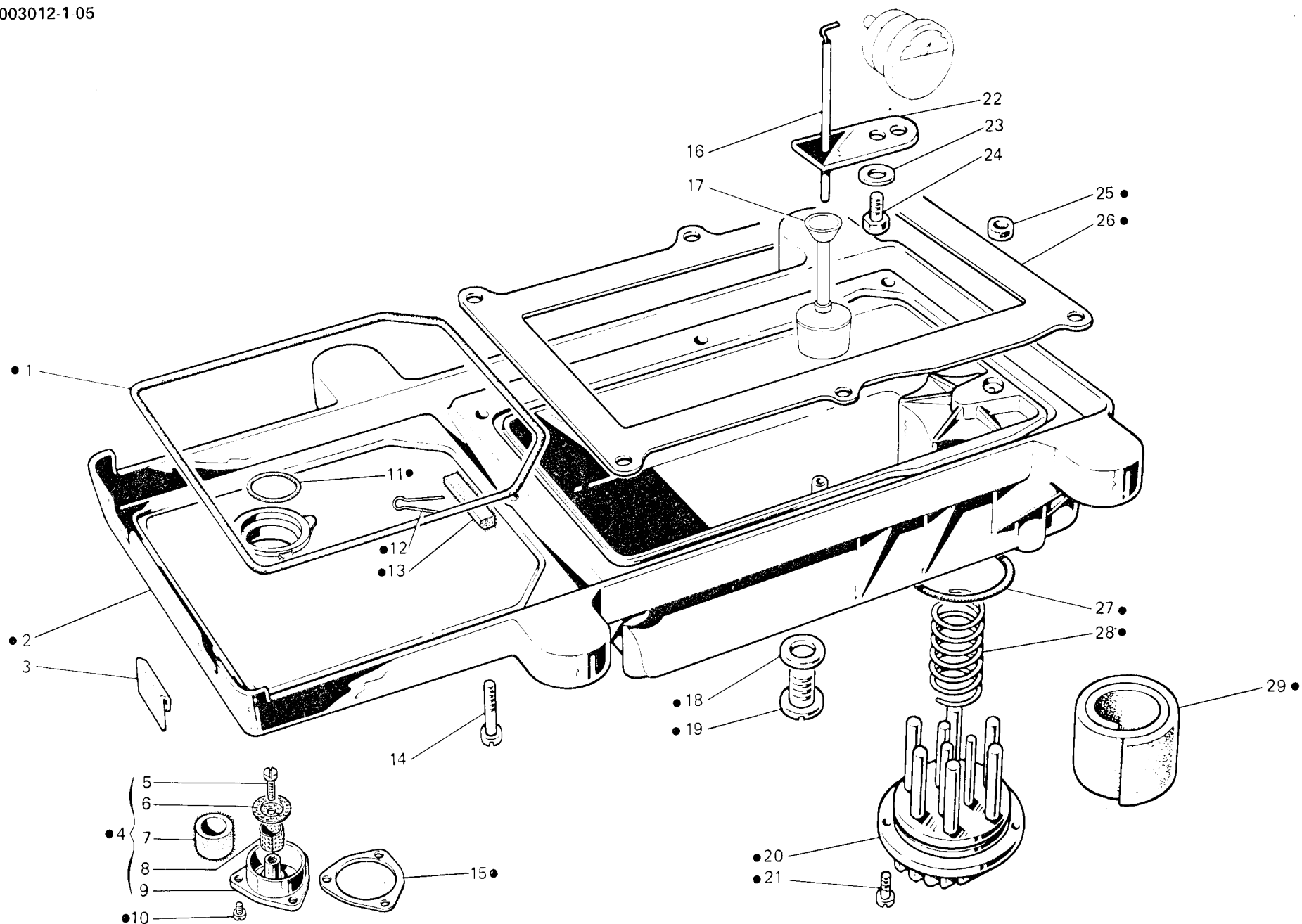


Fig. N. Abb. N.	Part. N. Pecce N. Bestell N. Pieza N.	Qt. Anzahl	DESCRIZIONE	DESCRIPTION	DESCRIPTION	BENENNUNG	DESCRIPCION
●	308588-4-10	1	bacinella olio completa	oil sump assembly	réservoir huile complet		
1	308125-0-01	1	guarnizione	gasket	garniture		
2	308576-2-20	1	bacinella	oil sump	réservoir		
3	308002-0-00	2	piastrina per bacinella	sheet for oil sump	plaquette pour réservoir		
4	308331-4-00	1	tappo completo	plug assembly	bouchon complet		
5	721484-2-00	1	vite	screw	vis		
6	308209-0-00	1	dischetto	disc	disque		
7	308206-0-00	1	filtro olio	oil filter	filtre huile		
8	308210-0-00	1	cilindretto	cylinder	cylindre		
9	308208-0-00	1	tappo	plug	bouchon		
10	722411-2-00	3	vite	screw	vis		
11	701134-0-00	1	guarnizione	gasket	garniture		
12	308957-0-00	1	clip	clip	clip		
13	308213-0-00	1	feltro	felt	feutre		
14	722453-2-00	6	vite fiss. bacinella	oil sump fixing screw	vis blocage réservoir		
15	308179-0-00	1	guarnizione	gasket	garniture		
16	308379-0-00	1	astina livello olio	stick	jauge niveau huile		
17	206665-2-00	1	galleggiante	float	floatteur		
18	705977-0-00	1	rondella	washer	rondelle		
19	206564-0-00	1	tappo	plug	bouchon		
20	206560-0-10	1	coperchio	cover	couvercle		
21	722063-2-00	2	vite	screw	vis		
22	308226-0-02	1	guida astina	guide for stick	guide barre		
23	703003-0-00	1	rondella elast.ca	spring washer	rondelle élastique		
24	740240-0-00	1	vite	screw	vis		
25	308113-0-00	1	anello	ring	anneau		
26	311395-0-00	1	guarnizione	gasket	garniture		
27	701051-0-00	1	guarnizione	gasket	garniture		
28	206545-0-00	1	molla a spirale	spring	ressort		
29	206559-0-01	1	filtro olio	oil filter	filtre huile		

TAV. 12

H 003012-0-00

H 003012-1-00

H 003012-1-05

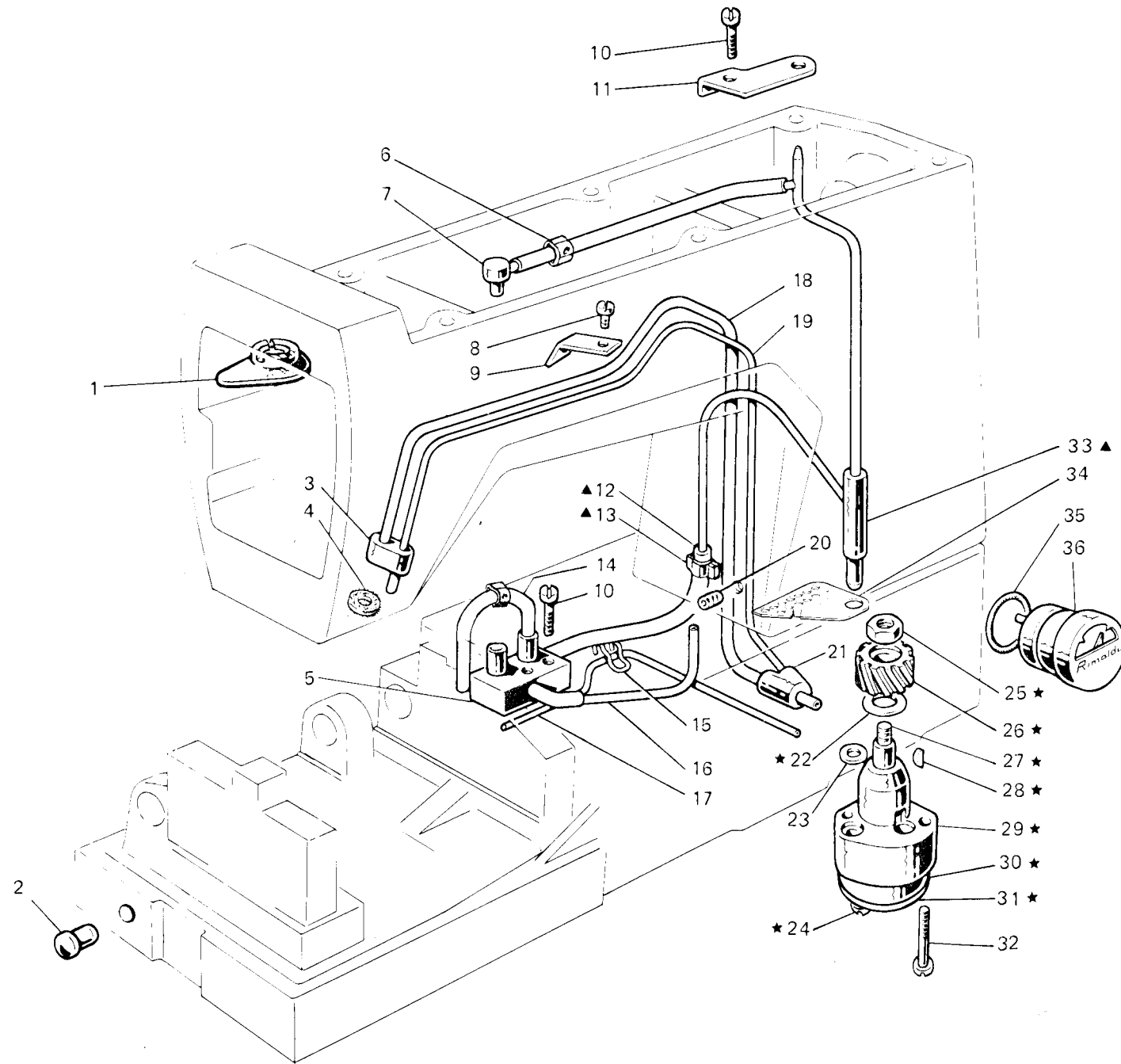


Fig. N. Abb. N.	Part. N. Piece N. Bestell N. Pieza N.	Qt. Anzahl	DESCRIZIONE	DESCRIPTION	DESCRIPTION	BENENNUNG	DESCRIPTION
★	308105-4-03	1	pompa olio completa	oil pump assembly	pompe à huile complet		
▲	310500-4-00	1	raccordo mandata olio compl	pipe connection oil delivery ass.	raccord envoi huile compl.		
1	308858-0-00	1	protezione olio	oil protection	protection huile		
2	202398-0-10	1	tappo	plug	bouchon		
3	308123-0-00	1	raccordo superiore	upper pipe connection	raccord supérieur		
4	308219-0-01	1	feltro	felt	feutre		
5	308114-2-02	1	distributore	distributor	distributeur		
6	308040-2-00	1	tubetto	pipe	tube		
7	308214-0-00	1	raccordo mandata olio	pipe connection oil delivery	raccord envoi huile		
8	721424-2-00	1	vite	screw	vis		
9	308184-0-00	1	fascetta	clamp	bride		
10	721514-0-00	3	vite	screw	vis		
11	308104-0-00	1	piastrina	plate	plaque		
12	308207-0-00	1	tubetto	pipe	tube		
13	308043-0-00	1	fascetta	clamp	bride		
14	310561-2-00	1	tubetto	pipe	tube		
15	308211-0-00	2	clip	clip	clip		
16	790315-0-00	1	tubetto	pipe	tube		
17	790325-0-00	1	tubetto	pipe	tube		
18	790342-0-00	1	tubetto recupero olio	pipe	tube		
19	790242-0-00	1	tubetto recupero olio	pipe	tube		
20	729032-2-00	1	vite	screw	vis		
21	308185-0-00	1	raccordo inferiore	lower pipe connection	raccord inférieur		
22	704813-0-00	1	rondella	washer	rondelle		
23	701004-0-00	1	anello di tenuta	retainer ring	bague d'étanchéité		
24	741082-2-00	2	vite	screw	vis		
25	733507-0-00	1	dado	nut	écrou		
26	206555-0-00	1	ingranaggio	gear	engrenage		
27	206552-2-00	1	albero completo	shaft assembly	arbre complet		
28	206557-0-00	1	chiavetta	key	clé		
29	206551-0-00	1	corpo pompa	pump body	corps pompe		
30	308110-3-00	1	corpo pompa aspirante	suction pump body	corps pompe admission		
31	308111-0-00	1	coperchio pompa	pump cover	couverclé pompe		
32	741092-0-00	2	vite fissaggio pompa	screw	vis		
33	308180-2-01	1	raccordo mandata olio	pipe connection oil delivery	raccord envoi huile		
34	305666-0-00	1	lamierino di protezione	sheet	plaque		
35	701032-0-00	1	anello di tenuta	circlip	circlip		
36	206669-2-02	1	indicatore livello olio	oil level gauge	indicateur niveau huile		

TAV. 13

H 003006-1-78
 H 003056-3-51
 H 003062-1-64
 H 003064-2-70

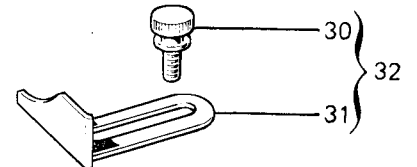
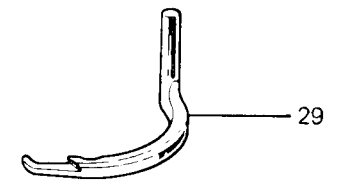
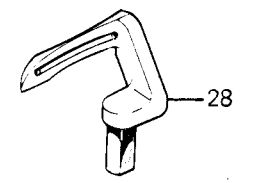
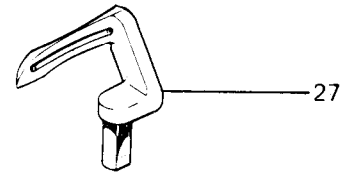
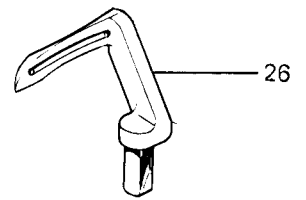
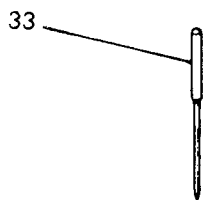
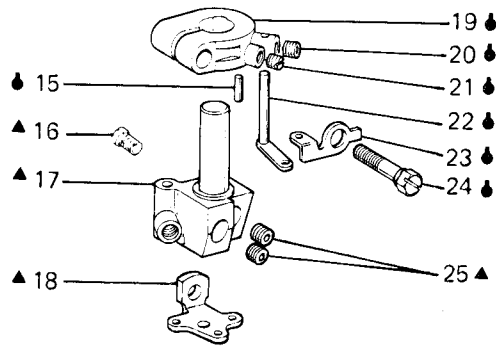
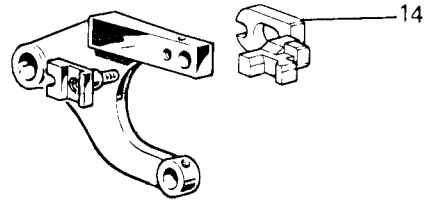
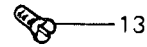
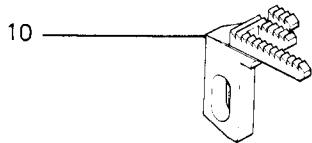
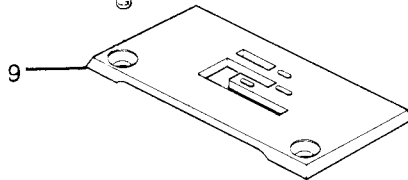
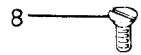
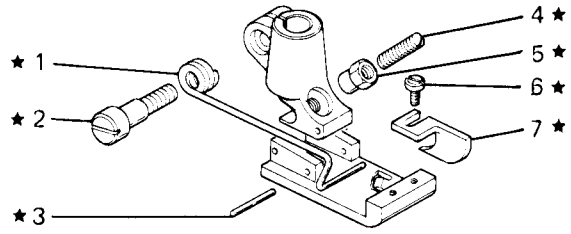


Fig. N. Abb. N.	Part. Piece Bestell Pieza	N. N. N. N.	Qt. Anzahl	DESCRIZIONE	DESCRIPTION	DESCRIPTION	BENENNUNG	DESCRIPTION
★	305695-3-00		1	pedino completo	presserfoot assembly		pied-presseur complet	
●	309319-4-00		1	fascetta completa	clamp assembly		bride complet	
▲	309863-4-00		1	mozzo porta aghi completo	needles hub assembly		moyeu porte aiguilles compl.	
1	305696-0-00		1	molla	spring		ressort	
2	743265-2-00		1	vite	screw		vis	
3	301268-0-10		2	spina	pin		goupille	
4	301596-0-11		1	vite	screw		vis	
5	301598-0-11		1	dado	nut		écrou	
6	100174-0-10		1	vite	screw		vis	
7	305697-0-00		1	guida	guide		guide	
8	744730-0-00		2	vite	screw		vis	
9	305677-0-00		1	placca ago	needle plate		plaque à aiguille	
10	305678-0-00		1	griffa principale	main feed dog		griffe principale	
11	788020-0-01		1	decalcomania sistema aghi	needles syst. decalcomania		décalcomanie syst. aiguilles	
12	780200-0-40		1	targhetta classe testa	head class plate		plaque classe tête	
13	202165-0-10		2	vite	screw		vis	
14	305676-0-00		1	salva ago mobile	movable rear needle guard		protège-aiguille mobile	
15	302292-0-10		1	spinetta	pin		goupille	
16	742811-2-00		1	vite	screw		vis	
17	305673-2-00		1	mozzo porta aghi	needles hub		moyeu porte aiguilles	
18	305672-0-00		1	passafilo	thread guide		passe-fil	
19	309330-0-00		1	fascetta	clamp		bride	
20	745800-2-00		1	vite	screw		vis	
21	745001-0-00		1	vite	screw		vis	
22	302146-0-10		1	guidafilo	thread guide		guide-fil	
23	309321-0-00		1	passafilo	thread guide		passe-fil	
24	302352-0-10		1	vite	screw		vis	
25	745810-2-00		3	vite	screw		vis	
26	305668-0-00		1	crochet posteriore	rear looper		crochet arrière	
27	305669-0-00		1	crochet intermedio	central looper		crochet central	
28	307381-0-02		1	crochet inferiore anteriore	front lower looper		crochet inférieur avant	
29	308750-2-00		1	crochet di copertura	looper		crochet	
30	300917-0-10		2	pomolo	knob		pommeau	
31	301050-0-11		1	guida	guide		guide	
32	310013-4-00		1	guida completa	guide assembly		guide complet	
33	766000-6-90		3	ago sist. RIM 63 fin. 90	needle syst. RIM 63 size 90		aiguille syst. RIM 63 jauge 90	

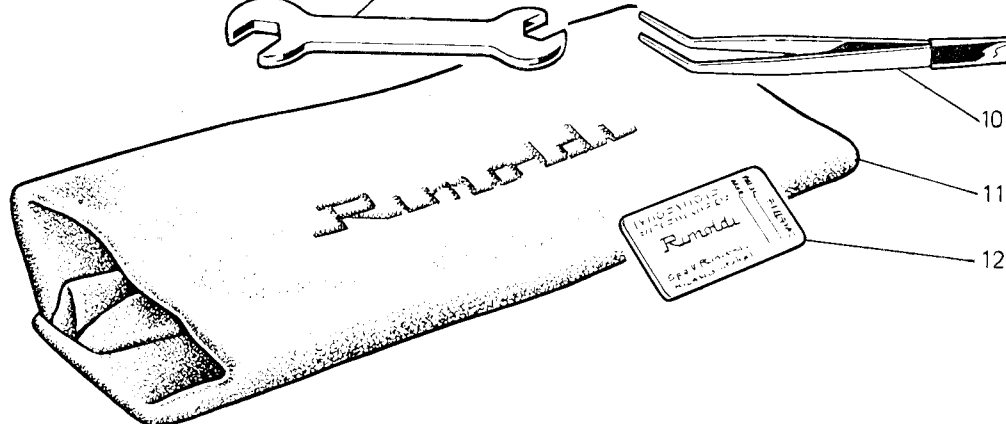
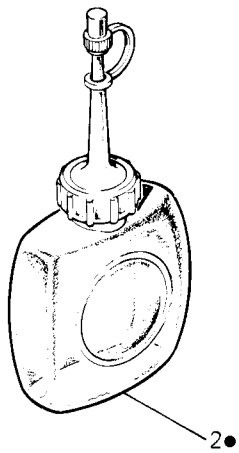
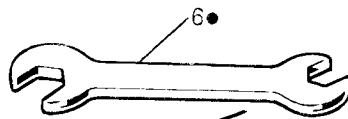
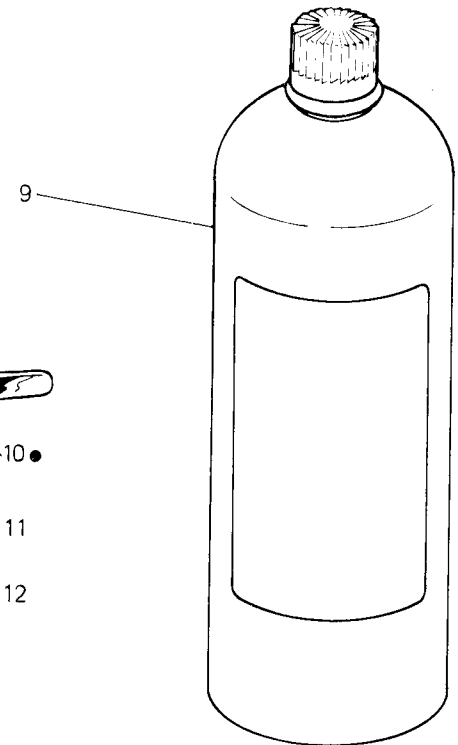
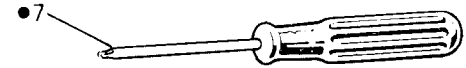
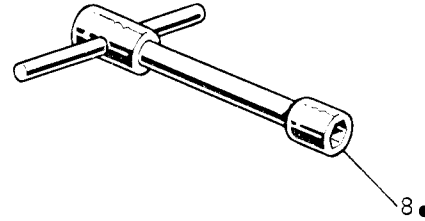
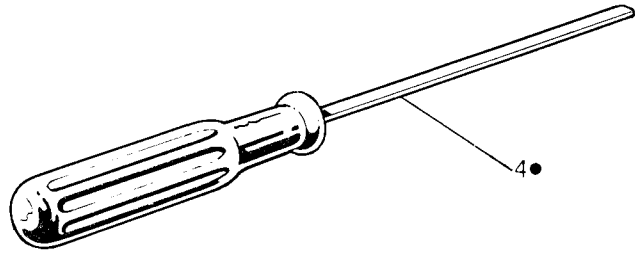
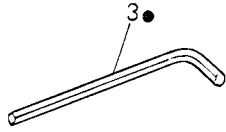
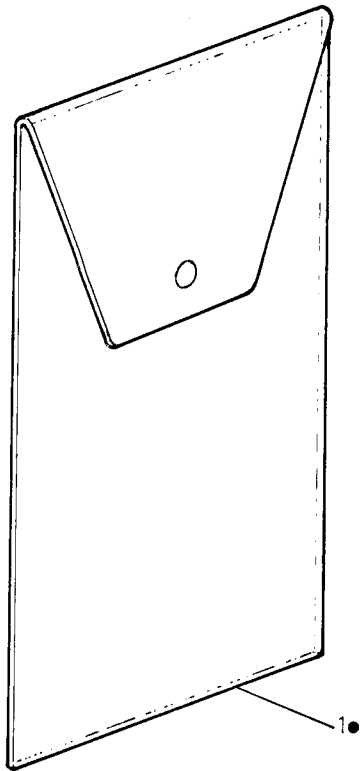


Fig. N. Abb. N.	Part. N. Piece N. Bestell N. Pieza N.	Qt. Anzahl	DESCRIZIONE	DESCRIPTION	DESCRIPTION	BENENNUNG	DESCRIPTION
●	991408-4-02	1	busta accessori completa	accessories envelope assembly	envelope accessoires complète		
1	991415-0-00	1	busta accessori	accessories envelope	envelope accessoires		
2	990175-0-10	1	oliatore	oiler	graisseur		
3	990474-0-11	1	chiave esagonale da 1,5 mm	1,5 mm hexagonal key	clé hexagonale de 1,5 mm		
4	990723-0-00	1	cacciavite medio	screw-driver	tournevis moyen		
5	990188-0-10	1	infila aghi	needles threading	enfiles aiguilles		
6	990193-0-00	1	chiave da 5-7 mm	5-7 mm key	clé de 5-7 mm		
7	990069-0-00	1	cacciavite piccolo	screw driver	petite tournevis		
8	990587-0-11	1	chiave a tubo da 9 mm	9 mm key	clé à tube de 9 mm		
9	991280-0-00	1	lattina olio cm ³ 820	oil container cm ³ 820	bidon huile de cm ³ 820		
10	990176-0-10	1	pinza per infilatura	threading tweezers	pince pour enfilage		
11	990578-0-13	1	cuffia protez. macchina	machine cover	couverture protection machine		
12	★	1	bustina aghi	needles packet	paquette aiguilles		
			★ per l'ordinazione della bustina citare lo stesso simbolo dell'ago montato sulla testa	★ to order packet of needles please specify symbol of needle fitted on machine	★ pour commander un sachet d'aiguille donner le symbol de l'aiguille montée sur la tête		

Z-3000-1-00

Z-3000-2-11

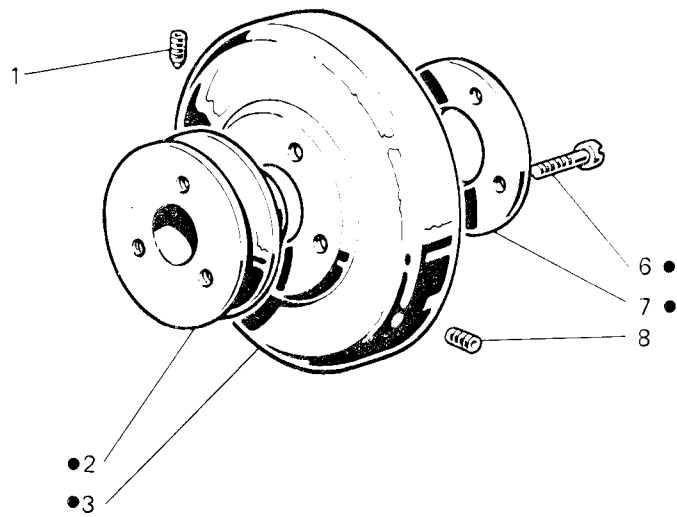
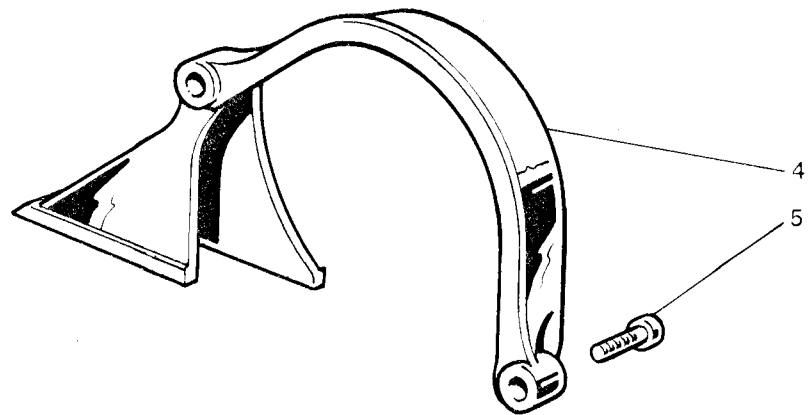


Fig. N. Abb. N.	Part. N. Piece N. Bestell N. Pieza N.	Qt. Anzahl	DESCRIZIONE	DESCRIPTION	DESCRIPTION	BENENNUNG	DESCRIPTION
●	308407-4-00	1	gruppo volante	handwheel assembly	groupe volant		
1	730054-2-00	1	vite per volante	screw for handwheel	vis pour volant		
2	308197-0-00	1	puleggia	pulley	poulie		
3	308410-0-00	1	corona	crown	couronne		
4	308461-0-00	1	copricinghia per volante Ø 125	belt cover for handwheel Ø 125	couvre-courroie pour volanti Ø 125		
5	721475-2-00	2	vite	screw	vis		
6	741984-2-00	3	vite	screw	vis		
7	308199-0-00	1	flangia	flange	flasque		
8	729044-2-00	1	vite	screw	vis		

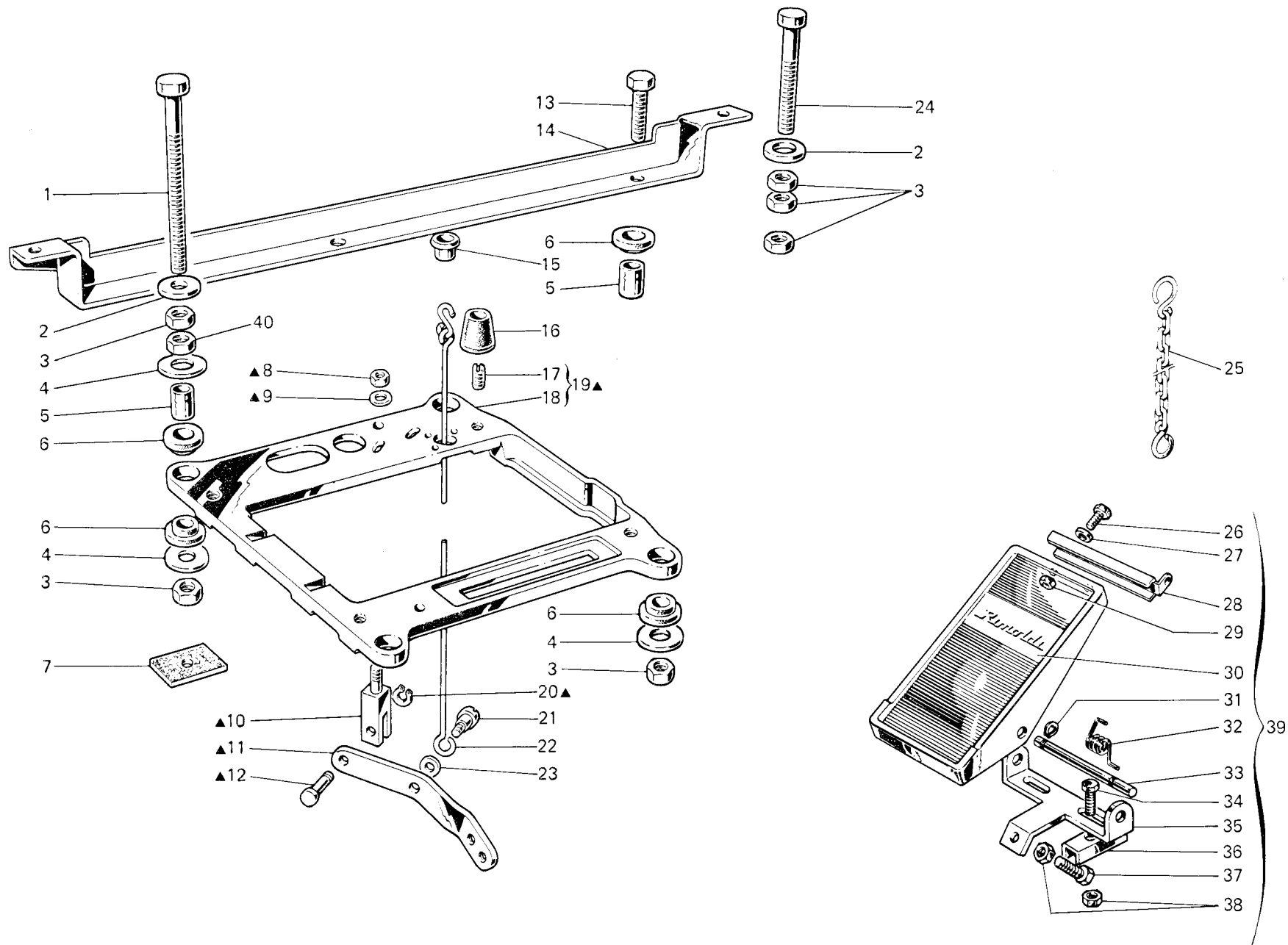


Fig. N. Abb. N.	Part. N. Piece N. Bestell N. Pieza N.	Qt. Anzahl	DESCRIZIONE	DESCRIPTION	DESCRIPTION	BENENNUNG	DESCRIPCION
▲	991254-4-00	1	PIAZZAMENTO INCASSATO supporto testa completo	SUBMERGED SETTING head support assembly	INSTALLATION ENCASTREE support tête complet		
1	722920-2-00	2	vite	screw	vis		
2	704346-2-00	4	rondella	washer	rondelle		
3	733813-0-00	10	dado	nut	écrou		
4	704345-2-00	6	rondella	washer	rondelle		
5	901102-0-00	4	distanziale	spacer	entretoise		
6	901101-0-00	8	ammortizzatore	shock absorber	amortisseur		
7	900203-0-10	4	ammortizzatore per tavola	shock absorber	amortisseur pour table		
8	746409-2-00	1	dado	nut	écrou		
9	704316-2-00	1	rondella	washer	rondelle		
10	991256-0-00	1	supportino per leva	support for lever	support pour levier		
11	991255-0-00	1	leva	lever	levier		
12	991257-0-00	1	perno	pin	pivot		
13	720546-0-00	2	vite	screw	vis		
14	901251-2-00	1	staffa	bracket	bride		
15	900204-0-10	1	bussola	bush	bague		
16	990982-0-00	4	ammortizzatore	shock absorber	amortisseur		
17	901253-0-00	4	vite	screw	vis		
18	991250-0-00	1	supporto testa	head support	support tête		
19	991252-4-00	1	supporto testa con viti	head support with screws	support tête avec vis		
20	700208-0-00	1	anello elastico	spring ring	anneau ressort		
21	743541-2-00	1	vite	screw	vis		
22	991259-3-00	1	tirante	tie-rod	tirant		
23	704310-2-00	1	rondella	washer	rondelle		
24	722907-2-00	2	vite	screw	vis		
25	990179-4-11	1	catenella	chain	chaînette		
26	720464-4-00	2	vite	screw	vis		
27	704009-4-00	2	rondella	washer	rondelle		
28	900926-0-00	1	attacco	coupling	raccord		
29	733508-4-00	2	dado	nut	écrou		
30	900931-0-00	1	copertura	covering	couverture		
31	900918-0-00	2	anello elastico	spring ring	anneau ressort		
32	900927-0-00	1	molla	spring	ressort		
33	900928-0-00	1	perno	pin	pivot		
34	720505-4-00	2	vite	screw	vis		
35	900929-0-01	1	supporto	support	support		
36	900920-0-00	2	piastrina	plate	plaquette		
37	720545-4-00	1	vite	screw	vis		
38	733510-4-00	3	dado	nut	écrou		
39	900925-4-01	1	pedalina completa	pedal assembly	pédale complète		
40	733008-2-00	4	dado	nut	écrou		

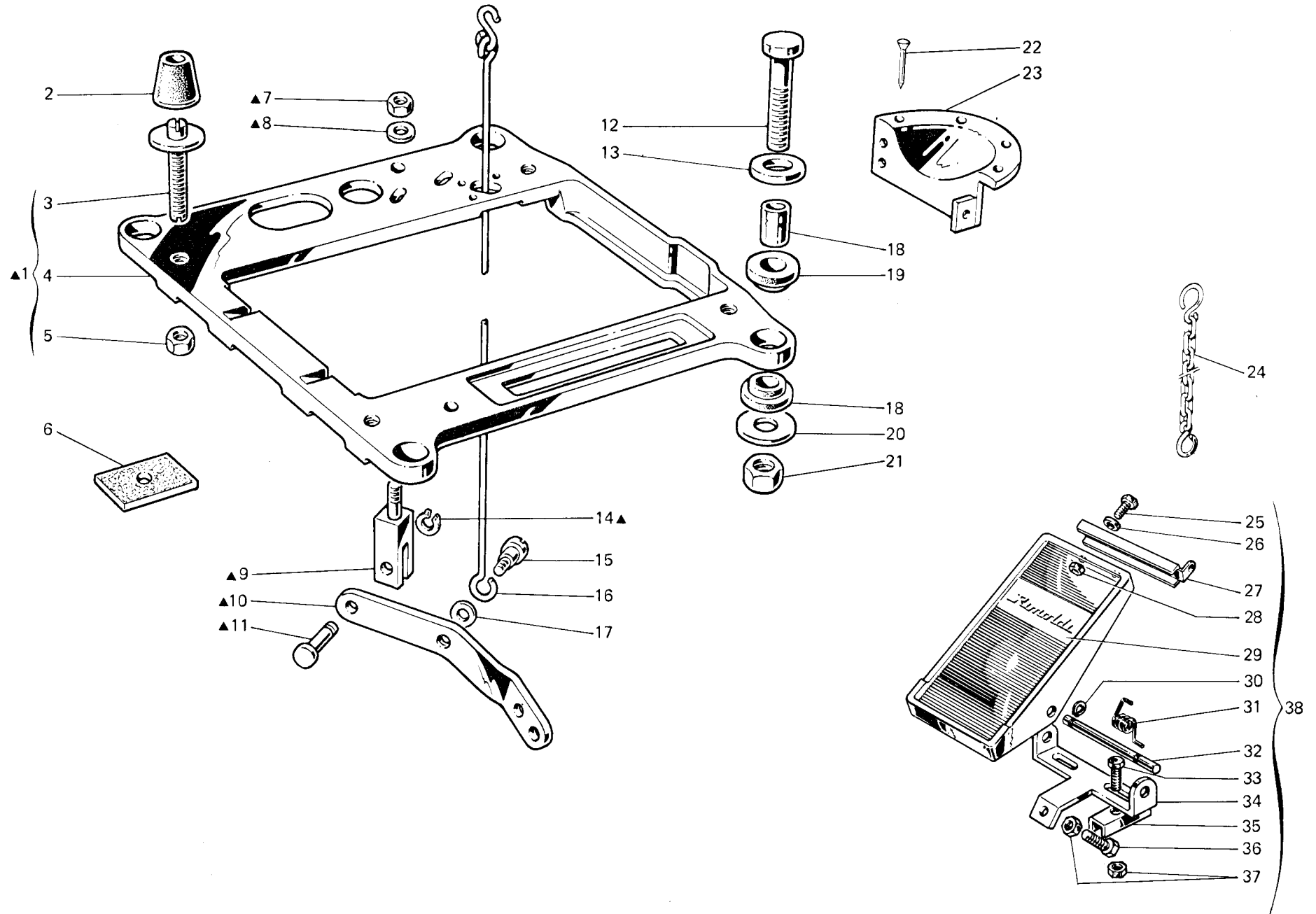


Fig. N. Abb. N.	Part. N. Bestell N. Piece N. Pieza N.	Qt. Anzahl	DESCRIZIONE	DESCRIPTION	DESCRIPTION	BENENNUNG	DESCRIPCION
			PIAZZAMENTO NORMALE	NORMAL SETTING	INSTALLATION NORMAL		
▲	991253-4-00	1	supporto testa completo	head support assembly	support tête complet		
1	991251-4-00	1	supporto testa con perno	head support with pin	support tête avec pivot		
2	990982-0-00	4	ammortizzatore	shock absorber	amortisseur		
3	900694-0-11	4	perno	pin	pivot		
4	991250-0-00	1	supporto testa	head support	support tête		
5	733008-2-00	4	dado	nut	écrou		
6	900203-0-10	4	ammortizzatore per tavola	shock absorber	amortisseur pour table		
7	746409-2-00	1	dado	nut	écrou		
8	704316-2-00	1	rondella	washer	rondelle		
9	991256-0-00	1	supportino per leva	support for lever	support pour levier		
10	991255-0-00	1	leva	lever	levier		
11	991257-0-00	1	perno	pin	pivot		
12	722905-2-00	4	vite	screw	vis		
13	704346-2-00	4	rondella	washer	rondelle		
14	700208-0-00	1	anello elastico	spring ring	anneau ressort		
15	743541-2-00	1	vite	screw	vis		
16	991259-3-00	1	tirante	tie-rod	tirant		
17	704310-2-00	1	rondella	washer	rondelle		
18	901102-0-00	4	distanziale	spacer	entretoise		
19	901101-0-00	8	ammortizzatore	shock absorber	amortisseur		
20	704345-2-00	4	rondella	washer	rondelle		
21	733813-0-00	4	dado	nut	écrou		
22	900201-0-10	7	chiodini	rivets	clous		
23	990317-0-10	1	protezione volantino	handwheel protection	protection volant		
24	990179-4-11	1	catenella	chain	chaînette		
25	720464-4-00	2	vite	screw	vis		
26	704009-4-00	2	rondella	washer	rondelle		
27	900926-0-00	1	attacco	coupling	raccord		
28	733508-4-00	2	dado	nut	écrou		
29	900931-0-00	1	copertura	cover, g	couverture		
30	900918-0-00	2	anello elastico	spring ring	anneau ressort		
31	900927-0-00	1	molla	spring	ressort		
32	900928-0-00	1	perno	pin	pivot		
33	720505-4-00	2	vite	screw	vis		
34	900929-0-01	1	supporto	support	support		
35	900920-0-00	2	piastrina	plate	plaquette		
36	720545-4-00	1	vite	screw	vis		
37	733510-4-00	3	dado	nut	écrou		
38	900925-4-01	1	pedalina completa	pedal assembly	pédale complète		

H-003010-0-08
 H-003016-0-00
 H-003020-1-02

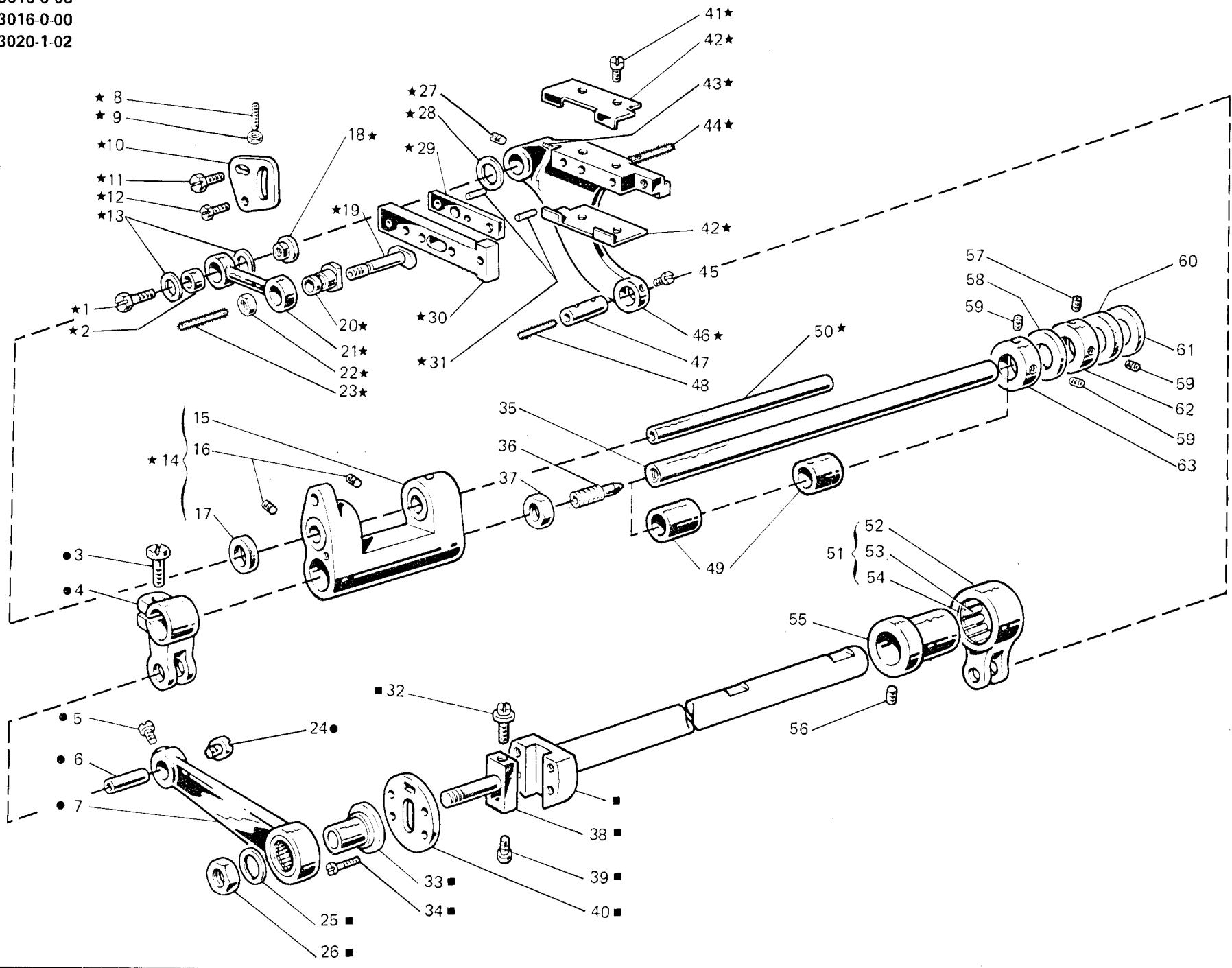


Fig. N. Abb. N.	Part. Piece Bestell Pieza	N. N. N. N.	Qt. Anzahl	DESCRIZIONE	DESCRIPTION	DESCRIPTION	BENENNUNG	DESCRIPTION
●	308286-4-00		1	gruppo leva	lever assembly	groupe levier		
★	314073-4-00		1	gruppo porta griffa	feed dog holder assembly	groupe porte griffe		
■	308358-4-01		1	semialbero inferiore completo	lower half-shaft assembly	semi-arbre inférieur compl.		
1	740475-2-00		1	vite	screw	vis		
2	300228-0-10		1	bussola	bush	bague		
3	202486-0-10		1	vite	screw	vis		
4	301519-2-11		1	attacco	coupling	raccord		
5	742813-0-00		1	vite	screw	vis		
6	308285-2-02		1	perno	pin	pivot		
7	308283-2-10		1	leva comando porta griffa	lever	levier		
8	730061-2-00		1	vite	screw	vis		
9	746002-2-00		1	dado	nut	écrou		
10	308194-0-01		1	settore	sector	secteur		
11	740257-2-00		1	vite	screw	vis		
12	740243-2-00		1	vite	screw	vis		
13	704805-0-00		2	rosetta	washer	rondelle		
14	308191-4-00		1	supporto oscillante completo	support assembly	support complet		
15	308193-2-01		1	supporto con vite	support with screw	support avec vis		
16	729013-2-00		2	vite	screw	vis		
17	308190-0-00		2	anello di tenuta	retainer ring	bague d'étanchéité		
18	300362-0-11		1	cursore	slider	curseur		
19	308276-0-20		1	perno slitta porta griffa	pin	pivot		
20	308196-0-10		1	bussola	bush	bague		
21	308275-2-00		1	biella	con-rod	bielle		
22	746404-2-00		1	dado	nut	écrou		
23	778412-0-00		1	stoppino	wick	mèche		
24	304640-0-10		1	vite	screw	vis		
25	704814-0-00		1	rosetta	washer	rondelle		
26	746612-2-00		1	dado	nut	écrou		
27	745815-2-00		1	vite	screw	vis		
28	309562-0-00		2	rosetta	washer	rondelle		
29	300361-0-20		1	piastrina	plate	plaque		
30	314068-0-00		1	slitta porta griffa	slide	glissière		
31	706434-0-00		2	spina	pin	goupille		
32	308281-0-00		1	vite di registro	adjustment screw	vis de réglage		
33	303458-0-12		1	bussola	bush	bague		
34	724441-0-00		4	vite	screw	vis		
35	308289-4-11		1	contralbero trasporto completo	transport countershaft assembly	axe transport complet		
36	308294-0-10		1	limitatore portata olio	limiter	limiteur		
37	746406-2-00		1	dado	nut	écrou		
38	308278-0-01		1	perno	pin	pivot		
39	308780-2-00		1	vite di registro	adjustment screw	vis de réglage		
40	308774-2-00		1	piastra disco	disc plate	plaque disque		
41	741928-0-00		4	vite	screw	vis		
42	300371-0-11		2	squadretta	bracket	équerre		
43	202473-0-11		1	vite	screw	vis		
44	778522-0-00		1	stoppino	wick	mèche		
45	742811-0-00		1	vite	screw	vis		

H-003010-0-08
 H-003016-0-00
 H-003020-1-02

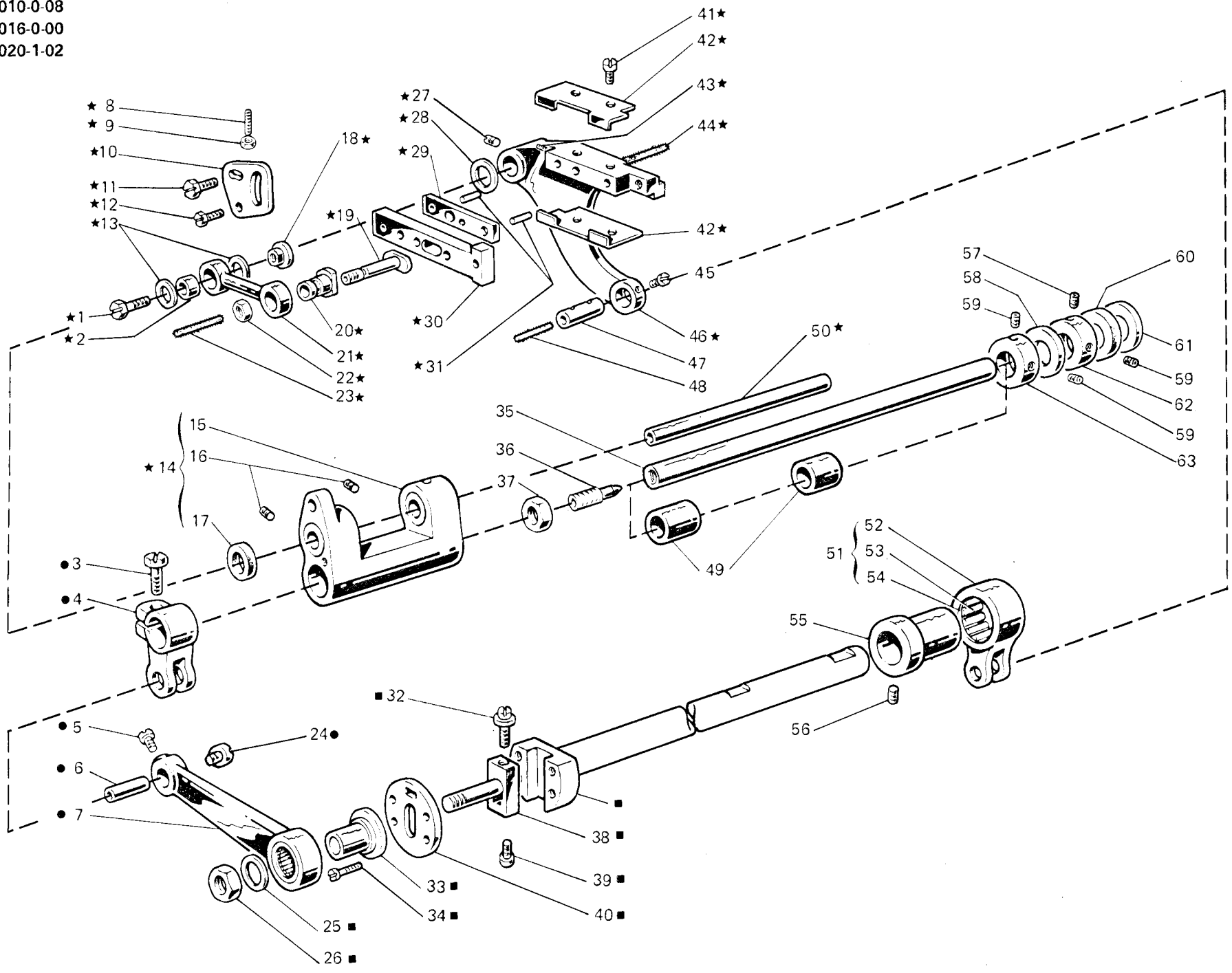


Fig. N. Abb. N.	Part. N. Piecce N. Bestell N. Pieza N.	Qr. Anzahl	DESCRIZIONE	DESCRIPTION	DESCRIPTION	BENENNUNG	DESCRIPTION
46	302028-2-20	1	braccio porta griffa	arm	bras		
47	300209-0-10	1	perno	pin	pivot		
48	778238-0-00	1	stoppino	wick	mèche		
49	308296-0-00	2	bussola	bush	bague		
50	311343-2-00	1	perno	pin	pivot		
51	301459-4-10	1	giunto completo	joint assembly	joint complet		
52	301458-0-10	1	giunto	joint	joint		
53	301379-0-10	1	gabbia a rullini	needles cage	cage à aiguilles		
54	201143-0-10	2	anello di tenuta	retainer ring	bague d'étanchéité		
55	308029-2-00	1	eccentrico	eccentric	excentrique		
56	727215-0-00	2	vite	screw	vis		
57	728232-0-00	1	vite	screw	vis		
58	704846-0-00	1	rosetta	washer	rondelle		
59	745136-2-00	3	vite	screw	vis		
50	308287-0-00	1	anello di tenuta	retainer ring	bague d'étanchéité		
61	704347-0-00	1	rosetta	washer	rondelle		
62	309839-2-01	1	anello di registro	adjustment ring	bague de réglage		
63	309838-2-01	1	anello di registro	adjustment ring	bague de réglage		



TAV. 19

H 003006-1-78
 H 003056-3-95
 H 003062-1-64
 H 003064-2-70

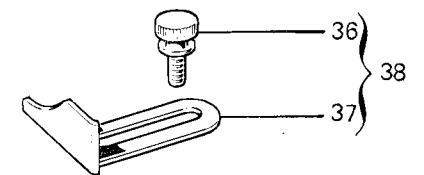
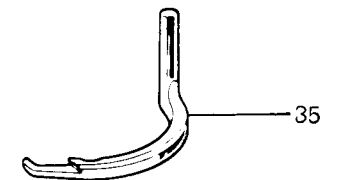
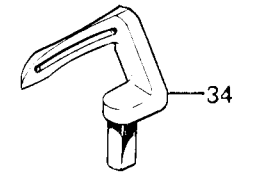
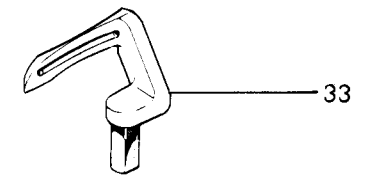
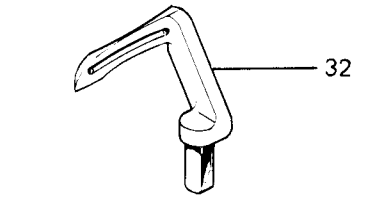
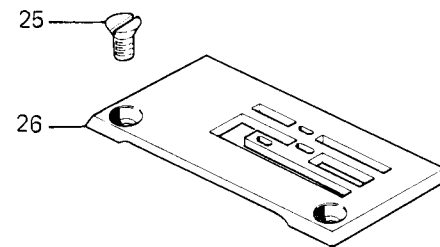
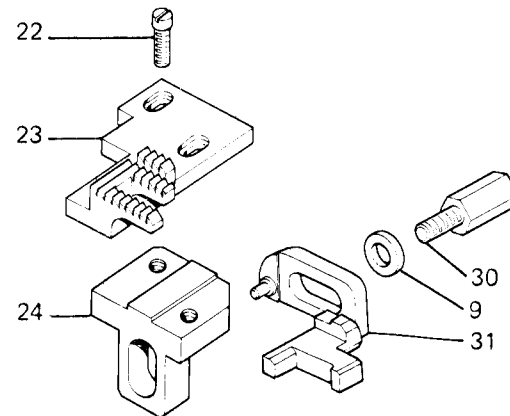
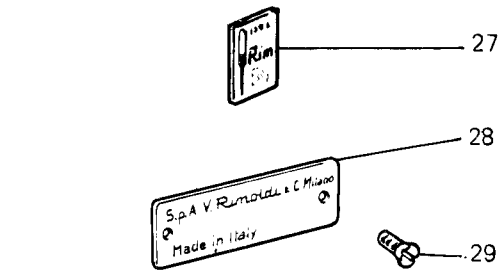
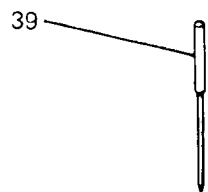
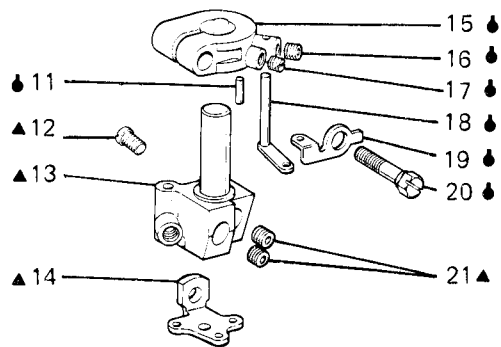
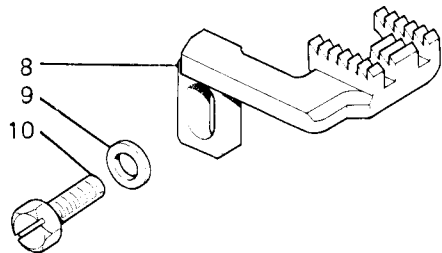
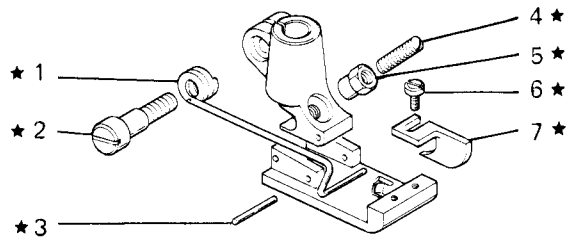


Fig. N. Abb. N.	Part. N. Piece N. Bestell N. Pieza N.	Qt. Anzahl	DESCRIZIONE	DESCRIPTION	DESCRIPTION	BENENNUNG	DESCRIPTION
★	305695-3-00	1	piedino completo	presserfoot assembly	pied-presseur complet		
◆	309319-4-00	1	fascetta completa	clamp assembly	bride complète		
▲	309863-4-00	1	mozzo porta aghi completo	needles hub assembly	moyeu porte-aiguilles complet		
1	305696-0-00	1	molla	spring	ressort		
2	743265-2-00	1	vite	screw	vis		
3	301268-0-10	2	spina	pin	goupille		
4	301596-0-11	1	vite	screw	vis		
5	301598-0-11	1	dado	nut	écrou		
6	100174-0-10	1	vite	screw	vis		
7	305697-0-00	1	guida	guide	guide		
8	314071-0-00	1	griffa differenziale	differential feed dog	griffe différentielle		
9	704405-0-00	2	rosetta	washer	rondelle		
10	740245-2-00	1	vite	screw	vis		
11	302292-0-10	1	spinetta	pin	goupille		
12	742811-0-00	1	vite	screw	vis		
13	305673-2-00	1	mozzo porta aghi	needles hub	moyeu porte-aiguilles		
14	305672-0-00	1	passafilo	thread guide	passe-fil		
15	309330-0-00	1	fascetta	clamp	bride		
16	745800-2-00	1	vite	screw	vis		
17	745001-0-00	1	vite	screw	vis		
18	302146-0-10	1	guidafilo	thread guide	guide-fil		
19	309321-0-00	1	passafilo	thread guide	passe-fil		
20	302352-0-10	1	vite	screw	vis		
21	745810-2-00	3	vite	screw	vis		
22	741546-2-00	2	vite	screw	vis		
23	314070-0-00	1	griffa	feed dog	griffe		
24	313037-0-00	1	squadretta	bracket	équerre		
25	744730-0-00	2	vite	screw	vis		
26	314072-0-00	1	placca	plate	plaque		
27	788020-0-01	1	decalcomania sistema aghi	needles syst. decalcomania	décalcomanie syst. aiguilles		
28	780200-0-40	1	targhetta classe testa	head class plate	plaque classe tête		
29	202165-0-10	2	vite	screw	vis		
30	302152-0-10	1	vite	screw	vis		
31	314069-0-00	1	salva ago mobile	movable rear needle guard	protège-aiguille mobile		
32	305668-0-00	1	crochet posteriore	rear looper	crochet arrière		
33	305669-0-00	1	crochet intermedio	central looper	crochet central		
34	307381-0-02	1	crochet inferiore anteriore	front lower looper	crochet inférieur avant		
35	308750-0-00	1	crochet di copertura	top covering looper	crochet de couverture		
36	300917-0-10	2	pomolo	knob	pommeau		
37	301050-0-11	1	guida	guide	guide		
38	310013-4-00	1	guida completa	guide assembly	guide complet		
39	766000-6-90	3	ago sist. RIM 63 fin. 90	needle syst. RIM 63 size 90	aiguille syst. RIM 63 jauge 90		