

CATALOGO PEZZI DI RICAMBIO
SPARE PARTS CATALOGUE
CATALOGUE RECHANGES
ERSATZTEILELISTE

CATALOGO PROVVISORIO

264-00-1CN-32

n. 193

652692130

UFFICIO CATALOGHI 10/77

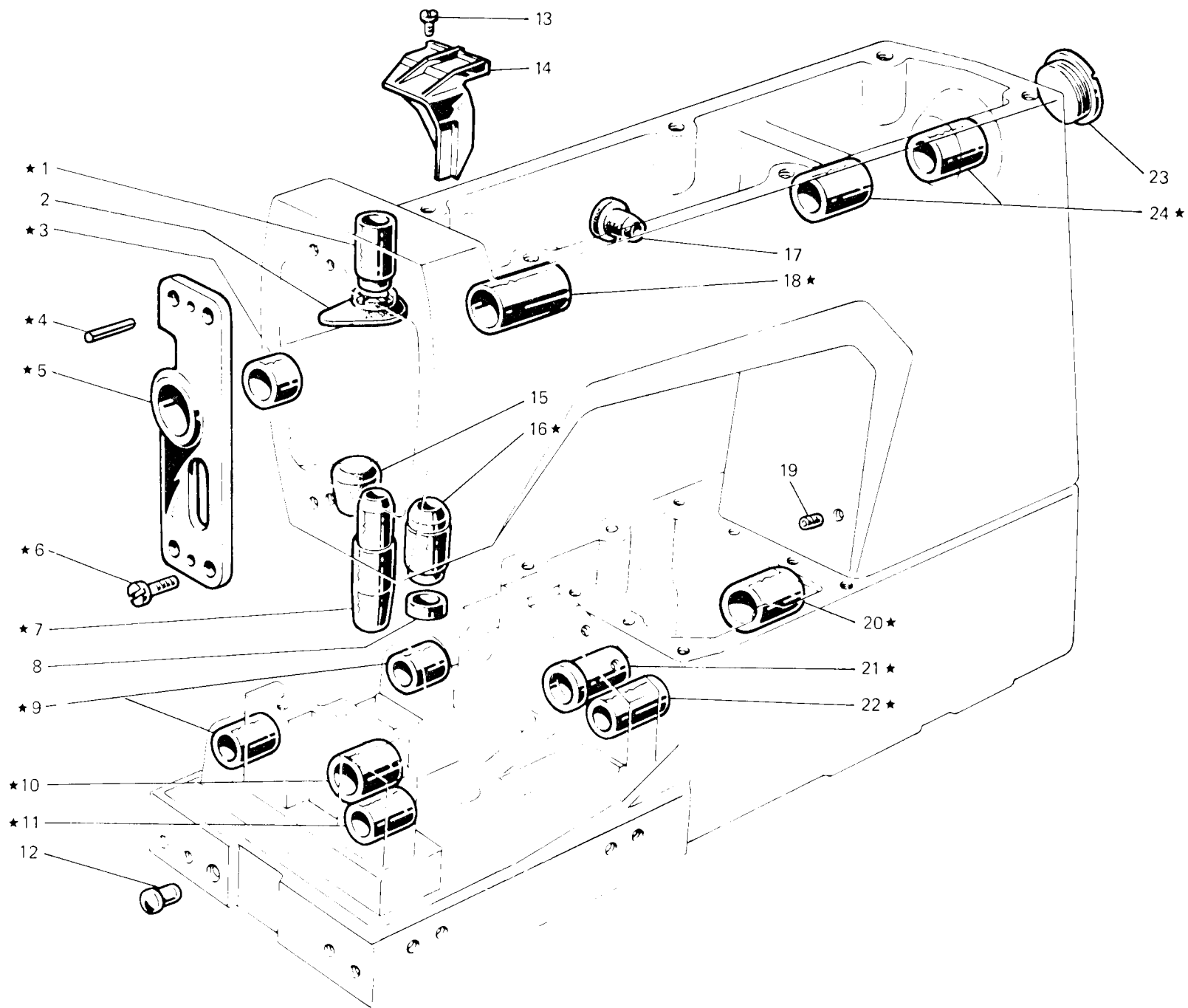


Fig. N. Abb. N.	Part. N. Bestell. N. Piece N. Pieza N.	Qt. Anzahl	DESCRIZIONE	DESCRIPTION	DESCRIPTION	BENENNUNG	DESCRIPCION
★	308632-3-00	1	base e braccio con bussola	base and arm with bushes	base et bras avec bagues		
1	308032-0-00	1	bussola	bush	bague		
2	308215-0-00	1	protezione olio	oil protection	protection huile		
3	308858-0-00	1	bussola	bush	bague		
4	706454-0-00	2	spina	pin	goupille		
5	308859-2-00	1	supporto con bussola fig. 3	support with bush fig. 3	support avec bague fig. 3		
6	722084-2-00	4	vite	screw	vis		
7	308406-0-00	1	bussola	bush	bague		
8	308218-0-00	1	scodellino inferiore	lower cup	cuvette inférieure		
9	308296-0-00	2	bussola	bush	bague		
10	308293-0-02	1	bussola	bush	bague		
11	308297-0-00	1	bussola	bush	bague		
12	202398-0-10	1	tappo	plug	bouchon		
13	721444-2-00	1	vite	screw	vis		
14	308138-0-11	1	carter paraolio	oil retainer cover	carter protection huile		
15	308094-0-00	1	tappo foro bussola	plug	bouchon		
16	308031-0-00	1	bussola	bush	bague		
17	303501-0-10	1	tappo per foro tendifilo	plug	bouchon		
18	308852-0-00	1	bussola	bush	bague		
19	729032-2-00	1	vite	screw	vis		
20	308086-0-10	1	bussola	bush	bague		
21	308009-0-00	1	bussola	bush	bague		
22	308298-0-00	1	bussola	bush	bague		
23	302356-0-10	1	tappo	plug	bouchon		
24	308853-0-00	2	bussola	bush	bague		

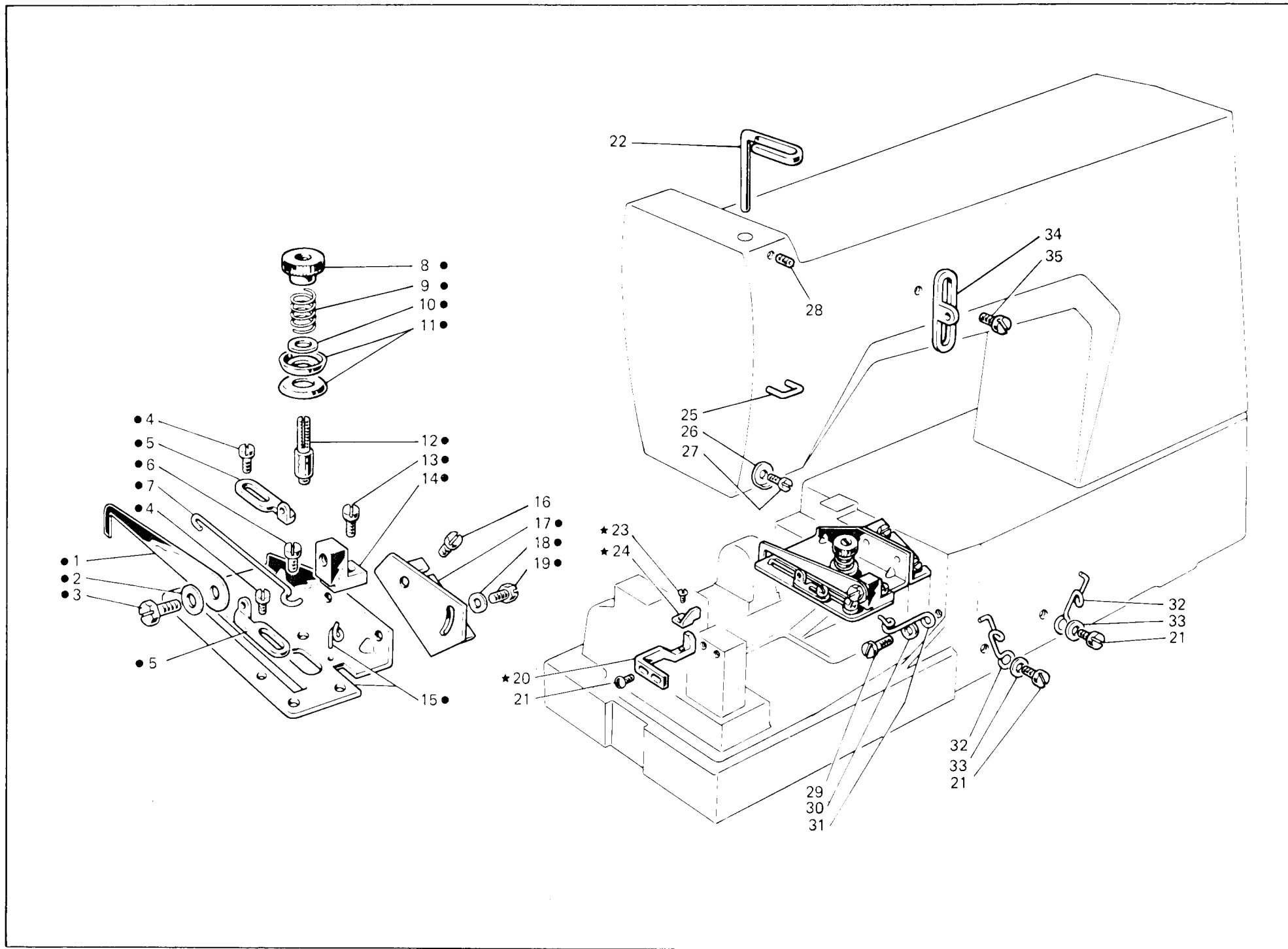


Fig. N. Abb. N.	Part. N. Bestell N. Piece N. Pieza N.	Qt. Anzahl	DESCRIZIONE	DESCRIPTION	DESCRIPTION	BENENNUNG	DESCRIPCION
★	303717-4-10	1	gruppo salva ago e spingi asola	front and rear needle guard	protège-aiguille et pare-boucle		
●	308934-4-00	1	gruppo tensione crochet inf.	tension assembly for lower looper	groupe tension crochet inférieur		
1	308556-0-00	1	astina	rod	tige		
2	705201-0-00	1	rondella	washer	rondelle		
3	740220-2-00	1	vite	screw	vis		
4	741413-2-00	2	vite	screw	vis		
5	302172-0-10	2	passafilo	thread guide	passe-fil		
6	741612-0-00	1	vite	screw	vis		
7	308558-0-00	1	traversino	tie-rod	traverse		
8	302204-0-10	1	pomolo	knob	pommeau		
9	300310-0-10	1	molla	spring	ressort		
10	704218-2-00	1	rondella	washer	rondelle		
11	200324-0-10	2	disco tensione	tension disc	disque tension		
12	300391-0-10	1	perno a vite	threaded pin	pivot à vis		
13	741642-2-00	1	vite	screw	vis		
14	302168-2-10	1	supporto	support	support		
15	308553-2-00	1	piastra	plate	plaque		
16	721444-2-00	2	vite	screw	vis		
17	308551-0-00	1	squadretta	bracket	équerre		
18	704104-2-00	2	rondella	washer	rondelle		
19	740210-2-00	2	vite	screw	vis		
20	303716-0-10	1	salva ago	rear needle guard	protège-aiguille		
21	300483-0-10	4	vite	screw	vis		
22	302136-0-12	1	passafilo	thread guide	passe-fil		
23	203231-0-10	1	vite	screw	vis		
24	303719-0-10	1	spingi asola	front needle guard	pare-boucle		
25	308137-0-00	1	cavallotto	coupling	cavalier		
26	308201-0-01	1	passafilo	thread guide	passe-fil		
27	724420-2-00	1	vite	screw	vis		
28	729012-2-00	1	vite	screw	vis		
29	741682-0-00	1	vite	screw	vis		
30	704302-4-00	1	rondella	washer	rondelle		
31	302149-0-11	1	passafilo	thread guide	passe-fil		
32	311098-0-00	2	passafilo	thread guide	passe-fil		
33	704210-4-00	2	rondella	washer	rondelle		
34	308200-0-01	2	guidafilo	thread guide	guide-fil		
35	303045-0-10	2	vite	screw	vis		

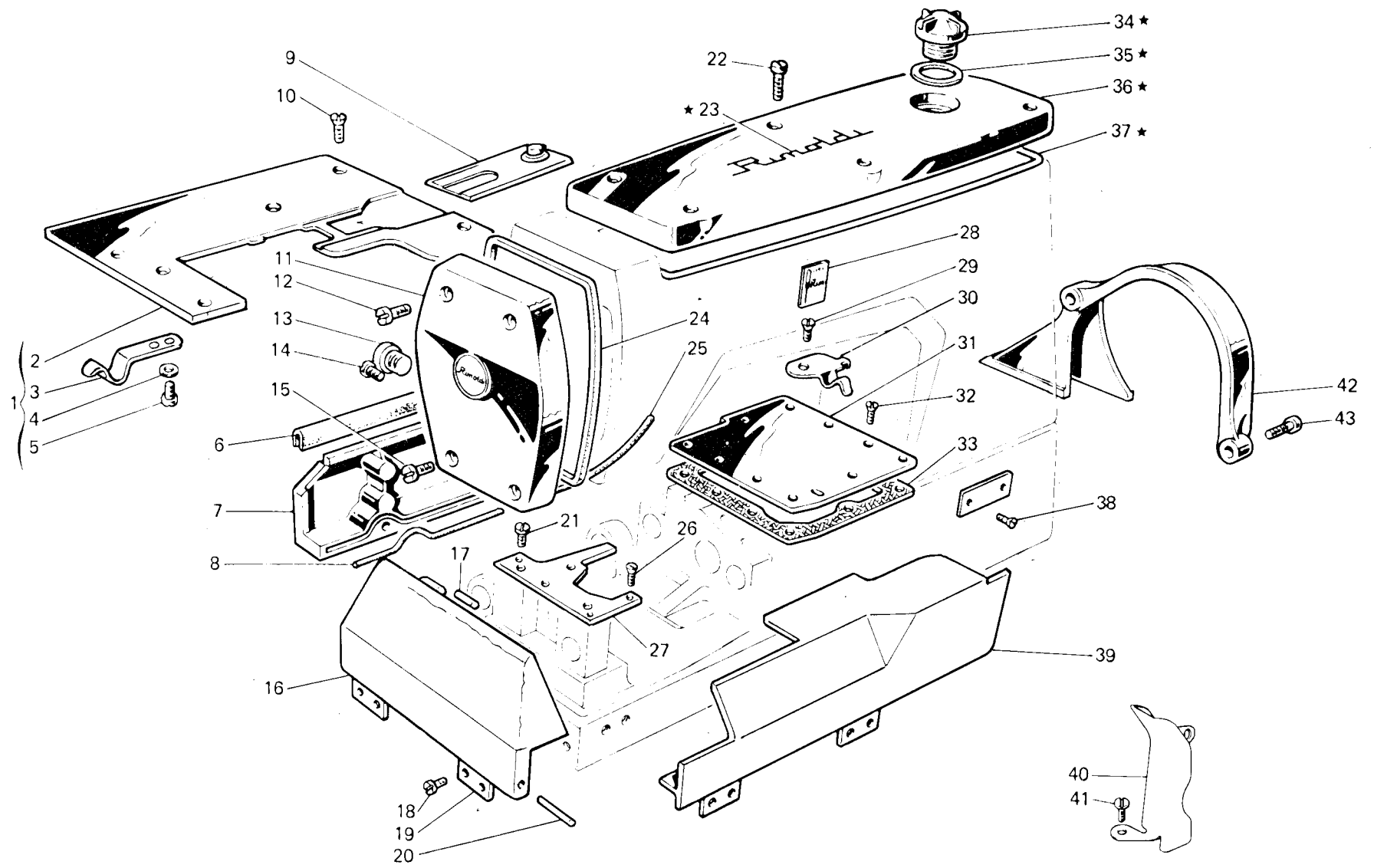


Fig. N. Abb. N.	Part. N. Piecce N. Bestell N. Pieza N.	Qt. Anzahl	DESCRIZIONE	DESCRIPTION	DESCRIPTION	BENENNUNG	DESCRIPCION
★	308103-4-10	1	coperchio sup. completo	upper cover assembly	couvercle sup. complet		
1	309674-4-00	1	piano di lavoro completo	working plate assembly	plan de travail complet		
2	309673-2-00	1	piano di lavoro	working plate	plan de travail		
3	311242-0-00	1	molla	spring	ressort		
4	704306-0-00	2	rondella	washer	rondelle		
5	720411-2-00	2	vite	screw	vis		
6	309687-0-00	1	guarnizione	gasket	garniture		
7	309683-0-00	1	carter posteriore	rear cover	carter arrière		
8	309098-0-00	1	guarnizione	gasket	garniture		
9	309675-2-00	1	coperchio scorrevole	sliding cover	couvercle coulissant		
10	744636-2-00	4	vite	screw	vis		
11	308101-2-00	1	coperchio laterale	side cover	couvercle latéral		
12	302354-0-10	2	vite superiore	upper screw	vis supérieure		
13	202026-0-10	1	tappo per carter posteriore	plug for rear cover	bouchon pour carter arrière		
14	741088-2-00	3	vite per carter posteriore	screw for rear cover	vis pour carter arrière		
15	302353-0-10	2	vite	screw	vis		
16	309671-3-00	1	carter laterale completo	side cover assembly	carter latéral complet		
17	707518-0-00	1	spina	pin	goupille		
18	300483-0-10	8	vite per cerniera	screw for hinge	vis pour charnière		
19	309332-0-00	4	cerniera	hinge	charnière		
20	707556-0-00	4	spina	pin	goupille		
21	302355-0-10	2	vite per piastra	screw for plate	vis pour plaque		
22	742282-2-00	6	vite per coperchio	screw for cover	vis pour couvercle		
23	300006-0-11	2	decalcomania	decalcomania	décalcomanie		
24	308128-0-00	1	guarnizione coperchio	cover gasket	garniture couvercle		
25	309099-0-00	1	guarnizione	gasket	garniture		
26	744654-2-00	2	vite per placca ago	screw for needle plate	vis pour plaque à aiguille		
27	309676-2-00	1	piastra porta placca	plate	plaque		
28	788021-0-01	1	decalcomania sistema aghi	needles decalcomania	décalcomanie syst. aiguilles		
29	721474-2-00	1	vite	screw	vis		
30	309360-0-00	1	molla chiusura carter	spring	ressort		
31	309324-2-00	1	piastra superiore	upper plate	plaque supérieure		
32	741936-2-00	9	vite per piastra	screw for plate	vis pour plaque		
33	309323-0-00	1	guarnizione	gasket	garniture		
34	202239-0-10	1	cupolina	cup	cupole		
35	705970-0-00	1	guarnizione per cupolina	gasket	garniture		
36	308102-0-10	1	coperchio superiore	upper cover	couvercle supérieur		
37	308129-0-00	1	guarnizione per coperchio	gasket for cover	garniture pour couvercle		
38	202165-0-10	2	vite per targhetta	screw for plate	vis pour plaquette		
39	309672-3-00	1	carter anteriore completo	front cover assembly	carter avant complet		
40	309352-0-10	1	carterino protezione fili	cover	carter		
41	722084-2-00	1	vite	screw	vis		
42	308461-0-00	1	copricinghia per volantino	belt cover	couvre-courroie		
43	721475-2-00	2	vite	screw	vis		

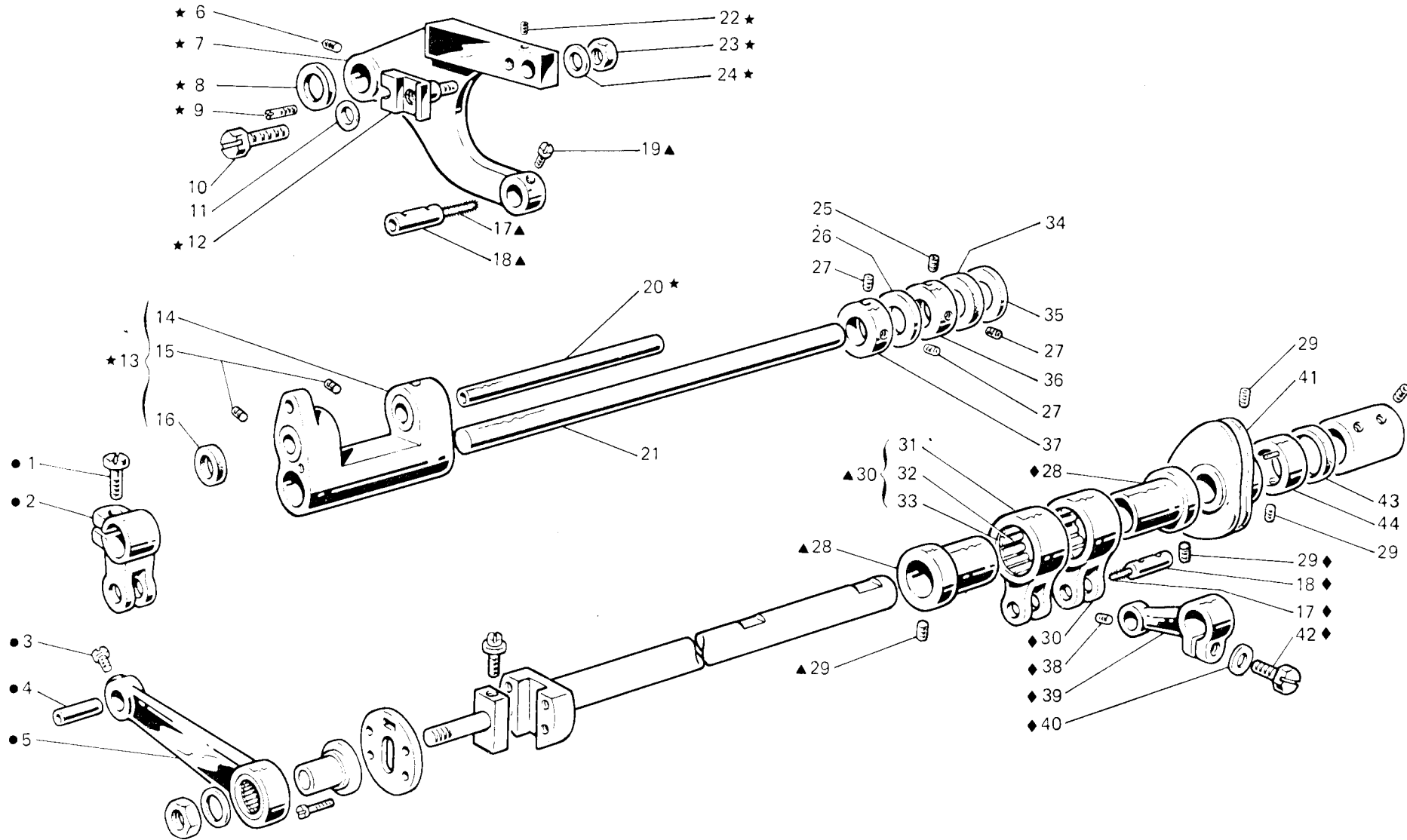


Fig. N. Abb. N.	Part. N. Piec. N. Bestell N. Pieza N.	Qt. Anzahl	DESCRIZIONE	DESCRIPTION	DESCRIPTION	BENENNUNG	DESCRIPCION
▲	308432-5-00	1	gruppo porta griffa compl. (con ★)	feed dog holder ass. (with ★)	groupe porte griffe (avec ★)		
★	308419-4-00	1	gruppo porta griffa	feed dog holder group	groupe porte griffe		
●	308286-4-00	1	gruppo leva	lever group	groupe levier		
◆	308340-4-00	1	gruppo comando crochet	looper control assembly	groupe commande crochet		
1	202486-0-10	1	vite	screw	vis		
2	301519-2-11	1	attacco	pipe union	raccord		
3	742813-0-00	1	vite	screw	vis		
4	308285-0-00	1	perno	pin	pivot		
5	308283-2-00	1	leva comando porta griffa	lever	levier		
6	745815-2-00	1	vite	screw	vis		
7	304613-0-10	1	braccio porta griffa	feed dog arm	bras porte-griffe		
8	309560-0-00	2	rondella	washer	rondelle		
9	304612-0-10	1	perno eccentrico	eccentric pin	pivot excentrique		
10	304684-0-10	1	vite fissaggio griffa	screw	vis		
11	704406-0-00	1	rondella	washer	rondelle		
12	309677-0-00	1	squadretta	bracket	équerre		
13	308191-4-00	1	supporto oscillante completo	oscillating support assembly	support coulissant compl.		
14	308193-2-00	1	supporto con vite	support with screw	support avec vis		
15	729013-2-00	2	vite	screw	vis		
16	308190-0-00	2	anello di tenuta	retainer ring	bague d'étanchéité		
17	778238-0-00	2	stoppino	wick	mèche		
18	300209-0-10	2	perno	pin	pivot		
19	742811-0-00	1	vite	screw	vis		
20	308195-0-00	1	perno	pin	pivot		
21	308898-2-00	1	perno per supporto oscillante	pin	pivot		
22	745812-2-00	1	vite	screw	vis		
23	746407-2-00	1	dado	nut	écrou		
24	704226-2-00	1	rondella	washer	rondelle		
25	728232-0-00	1	vite	screw	vis		
26	704846-0-00	1	rondella	washer	rondelle		
27	745136-2-00	3	vite	screw	vis		
28	308029-2-00	2	eccentrico con viti fig. 29	eccentric with screws fig. 29	excentrique avec vis fig. 29		
29	727215-0-00	7	vite	screw	vis		
30	301459-4-10	2	giunto compl. per eccentrico	joint assembly	joint compl.		
31	301458-0-10	2	giunto	joint	joint		
32	301579-0-10	2	gabbia a rullini	needles cage	cage à aiguilles		
33	201143-0-10	4	anello di tenuta	retainer ring	bague d'étanchéité		
34	308287-0-00	1	anello di tenuta	retainer ring	bague d'étanchéité		
35	704347-2-00	1	rondella	washer	rondelle		
36	309839-2-00	1	anello di registro	adjustment ring	bague de réglage		
37	309838-2-00	1	anello di registro	adjustment ring	bague de réglage		
38	729011-2-00	1	vite	screw	vis		
39	303459-2-11	1	braccio	arm	bras		
40	704218-2-00	1	rondella	washer	rondelle		
41	308971-3-00	1	tendifilo a camma con viti	cam thread take-up with screws	tendeur du fil à came avec vis		
42	300377-0-10	1	vite	screw	vis		
43	308119-0-00	1	anello di tenuta	retainer ring	bague d'étanchéité		
44	308967-2-00	1	anello limitatore	limiter ring	bague		

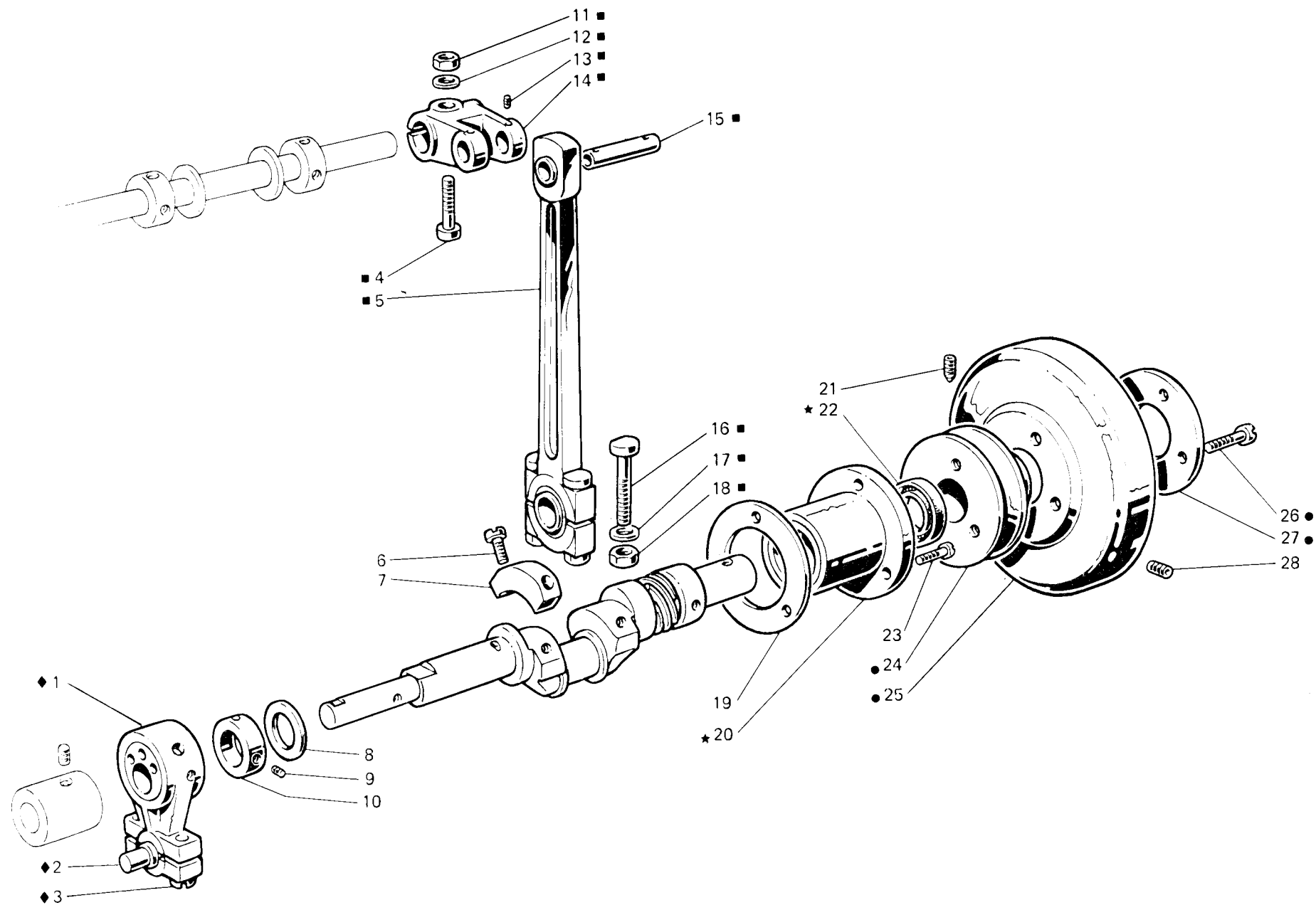


Fig. N Abb N	Part N Bestell N Piece N Pieza N	Qt. Anzahl	DESCRIZIONE	DESCRIPTION	DESCRIPTION	BENENNUNG	DESCRIPCION
★	308013.4-01	1	bussola destra completa	right bush assembly	bague droite complète		
●	308407.4-00	1	volantino completo	pulley assembly	volant complet		
■	308178.4-00	1	gruppo biella principale	main con-rod assembly	groupe bielle principale		
◆	310350.4-00	1	biella con eccentrico e viti compl.	con-rod and screws assembly	bielle avec excentrique et vis compl.		
1	308253.3-00	1	biella con eccentrico e viti	con-rod with cam and screws	bielle avec excentrique et vis		
2	308310.0-00	1	perno a sfera	ball joint	pivot à sphère		
3	308802.0-00	2	vite per biella	screw for con-rod	vis pour bielle		
4	308855.0-00	1	vite	screw	vis		
5	308174.3-00	1	biella principale completa	main con-rod assembly	bielle principale complète		
6	741056.0-00	4	vite	screw	vis		
7	302272.0-10	2	settore	sector	secteur		
8	704869.0-00	1	rondella	washer	rondelle		
9	745815.2-00	2	vite	screw	vis		
10	308084.2-00	1	anello di registro con viti	adjustment ring with screws	bague de réglage avec vis		
11	746408.2-00	1	dado	nut	écrou		
12	705013.0-00	1	rondella	washer	rondelle		
13	745812.2-00	2	vite	screw	vis		
14	308159.2-01	1	manovella	crank	manivelle		
15	308166.0-00	1	perno	pin	pivot		
16	308161.0-00	2	vite	screw	vis		
17	308149.0-01	2	rondella	washer	rondelle		
18	308162.0-00	2	dado	nut	écrou		
19	308127.0-00	1	guarnizione	gasket	garniture		
20	308012.2-01	1	bussola	bush	bague		
21	730054.2-00	1	vite per volantino	screw for pulley	vis pour volant		
22	700596.0-00	1	anello di tenuta	retainer ring	bague d'étanchéité		
23	742222.2-00	3	vite	screw	vis		
24	308197.0-00	1	puleggia	pulley	poulie		
25	308410.0-00	1	colonna	column	colonne		
26	741984.2-00	3	vite	screw	vis		
27	308199.0-00	1	flangia	flange	flasque		
28	729044.2-00	1	vite	screw	vis		

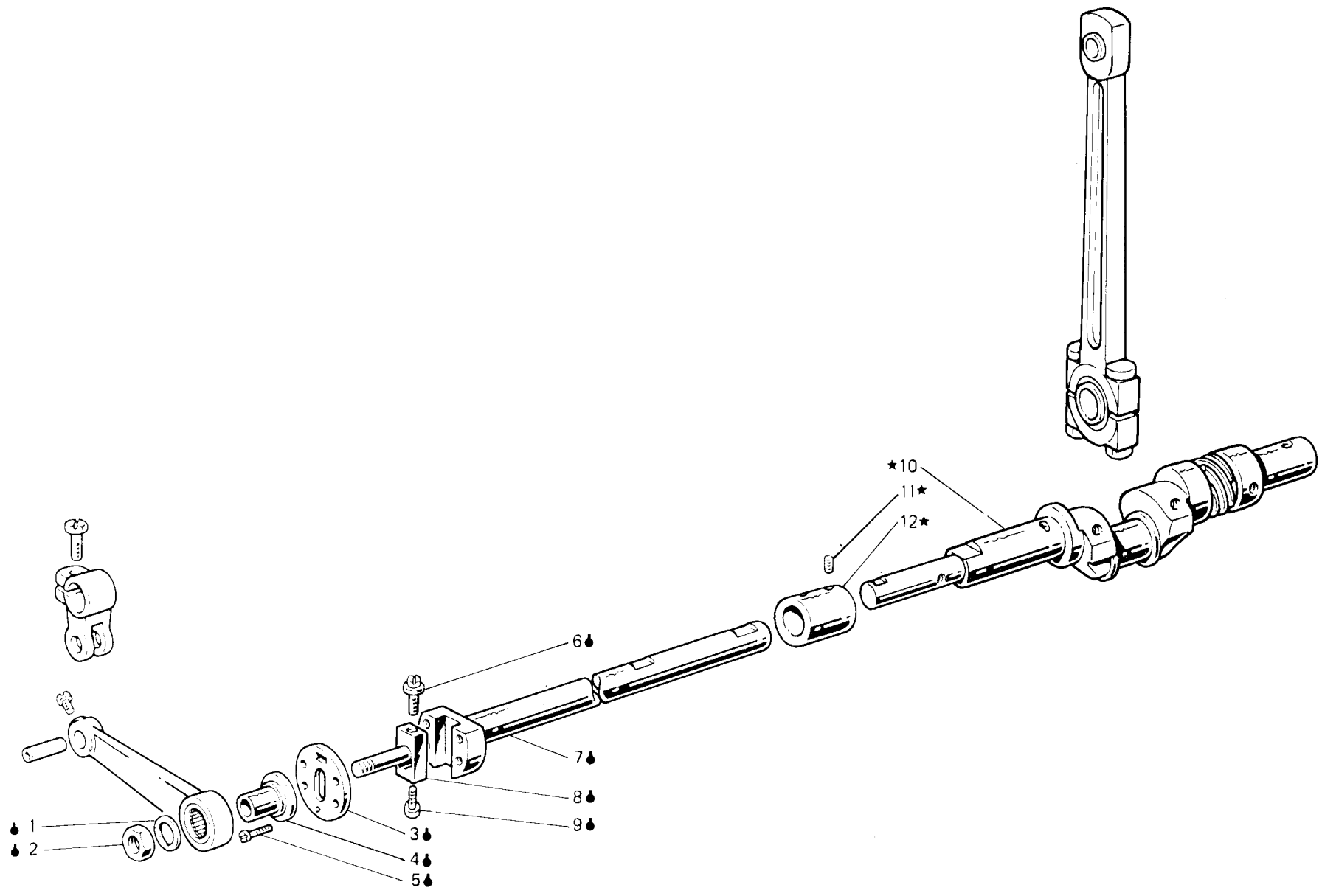


Fig. N. Abb. N.	Part. N. Bestell N. Piece N. Pieza N.	Qt. Anzahl	DESCRIZIONE	DESCRIPTION	DESCRIPTION	BENENNUNG	DESCRIPCION
★	309716-4-01	1	gruppo albero inf. (con ●)	lower shaft group (with ●)	groupe arbre inférieur (avec ●)		
●	308359-4-01	1	semialbero inf. sinistro compl.	left lower half-shaft assembly	semi-arbre inf. gauche compl.		
1	704814-0-00	1	rondella	washer	rondelle		
2	746612-2-00	1	dado	nut	écrou		
3	308774-2-00	1	piastra disco	disc plate	plaque		
4	303458-0-12	1	bussola	bush	bague		
5	724441-0-00	4	vite	screw	vis		
6	308281-0-00	1	vite di registro	screw	vis		
7	308382-2-01	1	semialbero	half-shaft	semi-arbre		
8	308278-0-01	1	perno	pin	pivot		
9	308780-2-00	1	vite di registro	adjustment screw	vis de réglage		
10	308717-3-01	1	semialbero inf. destro	right lower half-shaft	semi-arbre inf. droite		
11	745827-2-00	4	vite per manicotto	screw for coupling	vis pour manchon		
12	308015-0-00	1	manicotto	coupling	manchon		

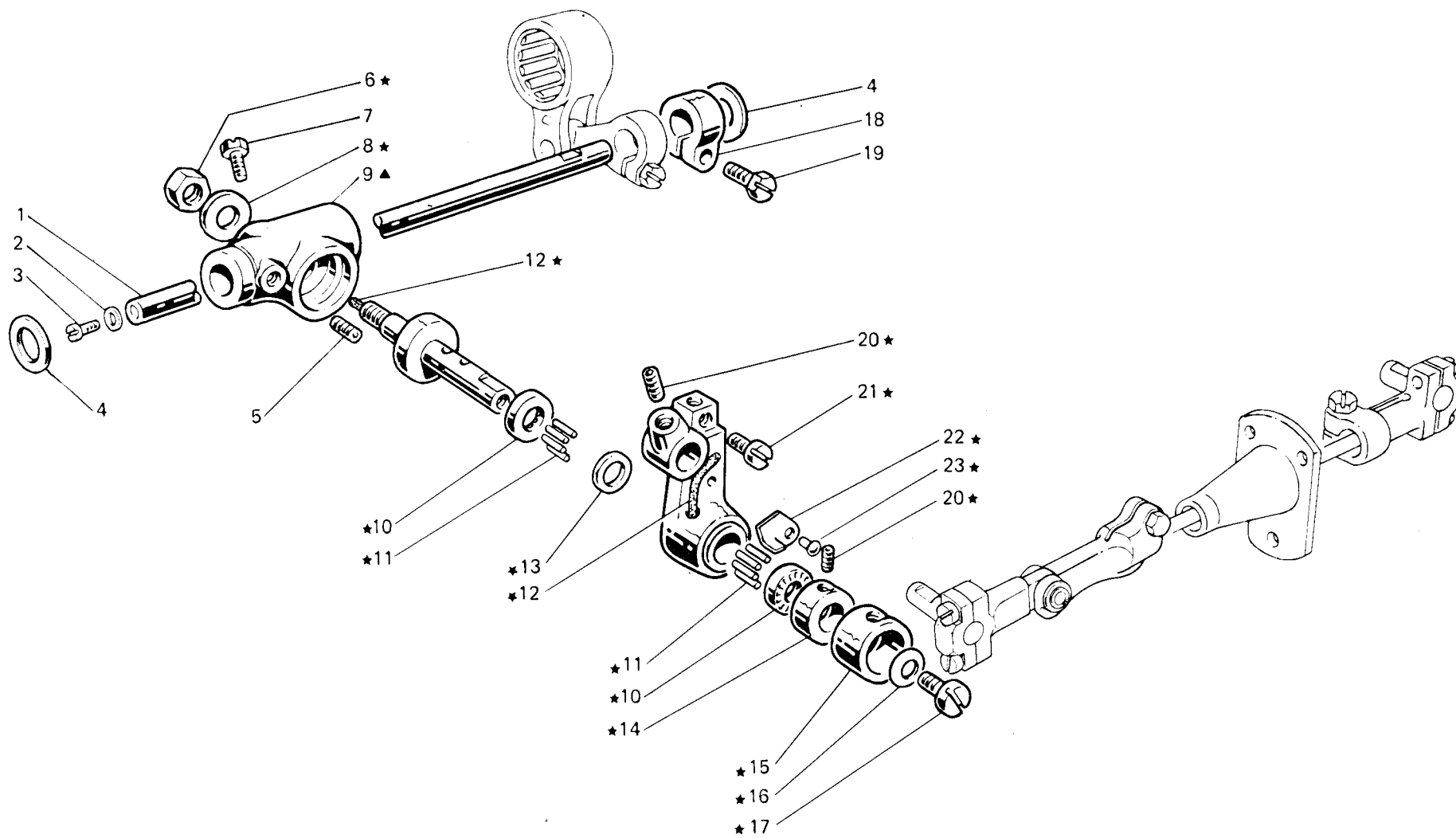


Fig. N. Abb. N.	Part. N. Bestell N. Piece N. Pieza N.	Qt. Anzahl	DESCRIZIONE	DESCRIPTION	DESCRIPTION	BENENNUNG	DESCRIPCION
▲	308261-4-00	1	gruppo porta crochet (con ★)	looper holder assembly (with ★)	groupe porte-crochet (avec ★)		
★	312810-3-00	1	porta crochet completo	looper holder assembly	porte crochet complet		
1	308292-4-00	1	coltralbero crochet inf. compl.	lower looper countershaft ass.	axe crochet inf. complet		
2	705734-0-00	1	guarnizione	gasket	garniture		
3	742214-2-00	1	vite	screw	vis		
4	704846-0-00	2	rondella	washer	rondelle		
5	730033-2-00	1	vite	screw	vis		
6	202474-0-10	1	dado	nut	écrou		
7	740226-0-00	1	vite per supporto	screw for support	vis pour support		
8	704226-2-00	1	rondella	washer	rondelle		
9	308140-0-00	1	supporto del porta crochet	support for looper holder	support du porte crochet		
10	303539-0-00	2	reggispinta	thrust bearing	butée		
11	302276-0-10	40	rullino	roller	rouleau		
12	778827-0-00	2	stoppino	wick	mèche		
13	703810-0-00	1	distanziale	spacer	entretoise		
14	302052-2-21	1	ghiera con viti	ring nut with screw	collier avec vis		
15	303538-0-00	1	cappellotto di protezione	protection cap	capuchon de protection		
16	702403-0-00	1	molla a tazza	cup spring	ressort à tasse		
17	742423-0-00	1	vite	screw	vis		
18	300469-2-11	1	fascetta	clamp	bride		
19	300482-0-10	1	vite	screw	vis		
20	745815-2-00	3	vite	screw	vis		
21	303503-0-10	1	vite fissa crochet	looper fixing screw	vis blocage crochet		
22	308272-0-00	1	piastrina	sheet	plaquette		
23	308273-0-00	1	rivetto	rivet	rivet		

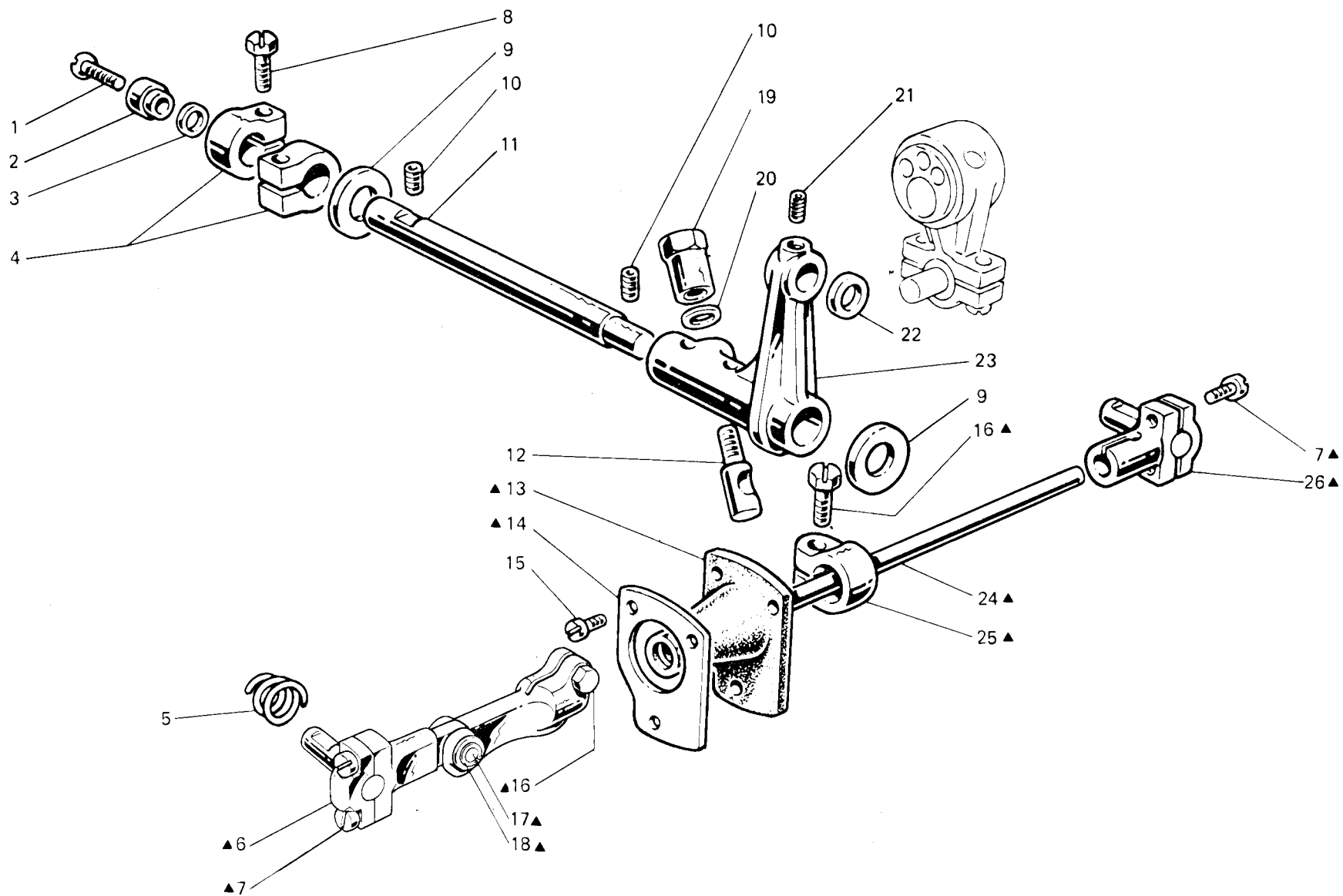


Fig. N. Abb. N.	Part. N. Bestell N. Piece N. Pieza N.	Qt. Anzahl	DESCRIZIONE	DESCRIPTION	DESCRIPTION	BENENNUNG	DESCRIPCION
▲	308459-4-00	1	gruppo comando crochet inf.	lower looper control ass.			
1	744676-2-00	1	vite	screw			
2	308047-0-00	1	scodellino	cup			
3	701009-0-00	1	anello di tenuta	retainer ring			
4	308046-2-01	2	fascetta	clamp			
5	302289-0-10	1	molla	spring			
6	308458-3-00	1	testa di biella con viti	con-rod big end with screws			
7	744040-2-00	4	vite	screw			
8	300482-0-10	2	vite	screw			
9	704849-0-00	2	rondella	washer			
10	729434-2-00	2	vite fissa perno	screw			
11	308044-0-00	1	perno per supporto	pin			
12	300352-0-10	1	spina filettata	pin			
13	308330-3-00	1	manicotto para olio	oil protection			
14	308327-0-00	1	mascherina per manicotto	flange			
15	741675-2-00	2	vite	screw			
16	305194-0-00	2	vite	screw			
17	302393-0-00	1	perno	pin			
18	700004-0-00	2	anello elastico	spring ring			
19	300351-0-11	1	dado	nut			
20	704309-4-00	1	rondella	washer			
21	745815-2-00	1	vite	screw			
22	705834-0-00	1	rondella in fibra	washer			
23	308045-0-01	1	supporto oscillante	support			
24	308334-0-01	1	tirante per biella	tie-rod			
25	308326-2-01	1	fascetta per biella con vite	clamp with screw			
26	308325-3-00	1	testa di biella con viti	con-rod big end with screws			

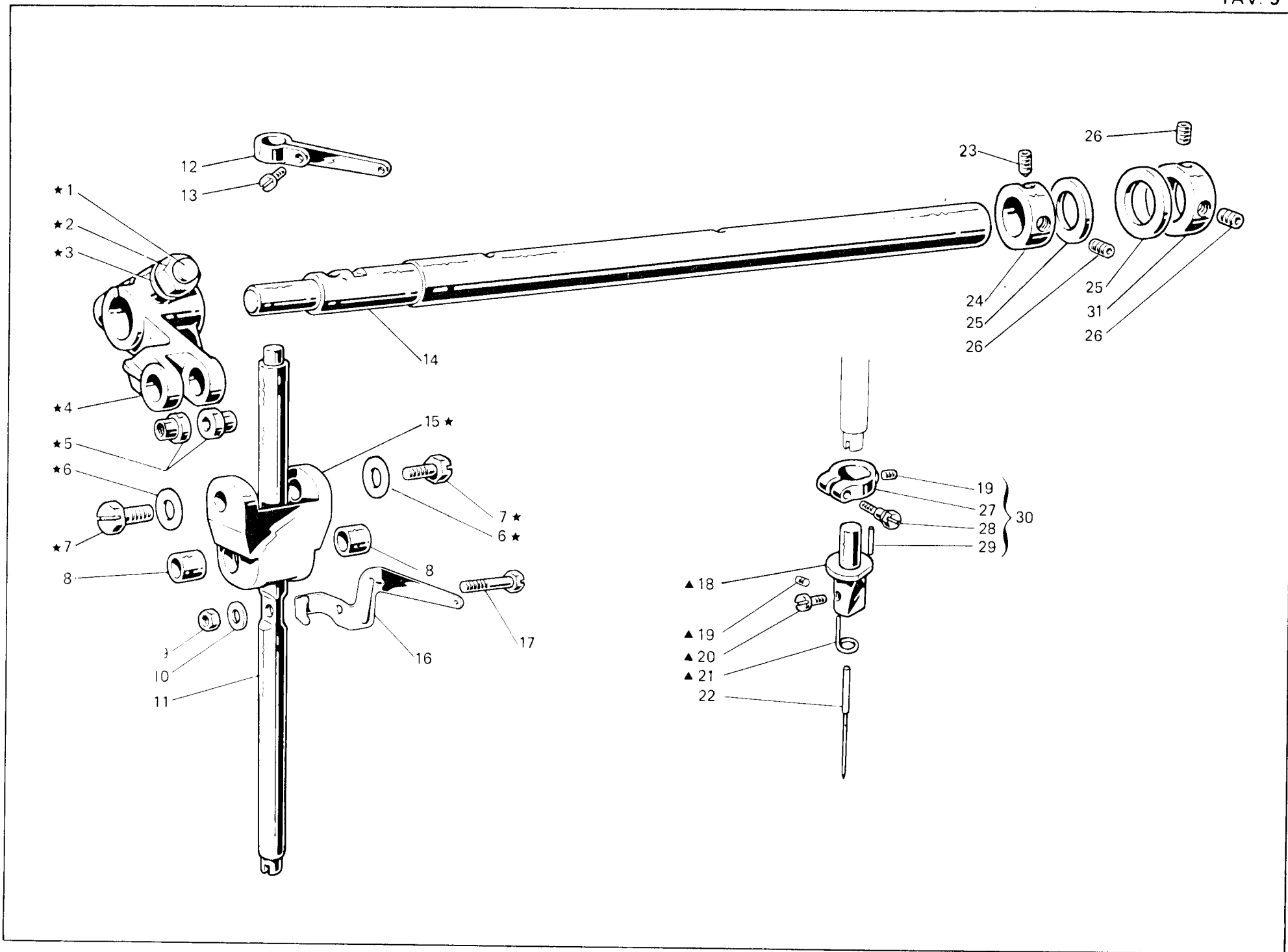


Fig. N. Abb. N.	Part. N. Bestell N. Piecce N. Pieza N.	Qt. Anzahl	DESCRIZIONE	DESCRIPTION	DESCRIPTION	BENENNUNG	DESCRIPCION
★	308006-4-00	1	gruppo manov. giunto barra ago	crank and joint assembly	groupe maniv. joint barre-aiguille		
▲	303397-4-10	1	morsetto porta aghi completo	needles clamp assembly	porte-aiguilles complet		
1	308855-0-00	1	perno a vite	threaded pin	pivot à vis		
2	746408-2-00	1	dado	nut	écrou		
3	705013-0-00	1	rondella	washer	rondelle		
4	308036-2-00	1	manovella completa	crank assembly	manivelle complète		
5	308037-0-00	2	perno superiore	upper pin	pivot supérieur		
6	704210-4-00	2	rondella	washer	rondelle		
7	308039-0-01	2	vite	screw	vis		
8	308041-0-00	2	bussola inferiore	lower bush	bague inférieure		
9	302338-0-10	1	dado	nut	écrou		
10	703005-0-00	1	rondella	washer	rondelle		
11	308220-0-00	1	barra ago	needle bar	barre-aiguille		
12	308400-2-01	1	tendifilo superiore	upper thread take-up	tendeur supérieur		
13	742311-2-00	1	vite	screw	vis		
14	308851-2-01	1	albero superiore	upper shaft	arbre supérieur		
15	308038-0-10	1	giunto barra ago	needle bar joint	joint barre-aiguille		
16	308401-0-20	1	tendifilo inferiore	lower thread take-up	tendeur inférieur		
17	308042-0-00	1	perno per barra ago	pin for needle bar	pivot pour barre-aiguille		
18	303396-0-10	1	morsetto porta aghi	needles clamp	porte-aiguilles		
19	745001-0-00	2	vite	screw	vis		
20	741532-2-00	1	vite fissa ago	needle screw	vis blocage aiguille		
21	303455-0-10	1	passafilo	thread guide	passe-fil		
22	766200-6-80	1	ago sist. Rim 64 fin. 80	needle syst. Rim 64 size 80	aiguille syst. Rim 64 jauge 80		
23	730033-2-00	1	vite	screw	vis		
24	309831-2-00	1	anello di registro con viti	adjustment ring with screws	bague de réglage avec vis		
25	704869-0-00	2	rondella	washer	rondelle		
26	729013-2-00	3	vite	screw	vis		
27	302591-0-10	1	fascetta per barra ago	clamp for needle bar	bride pour barre-aiguille		
28	302352-0-10	1	vite	screw	vis		
29	302292-0-10	1	spina	pin	goupille		
30	302590-4-10	1	fascetta completa	clamp assembly	bride complète		
31	309830-2-00	1	anello di registro con viti	adjustment ring with screws	bague de réglage avec vis		

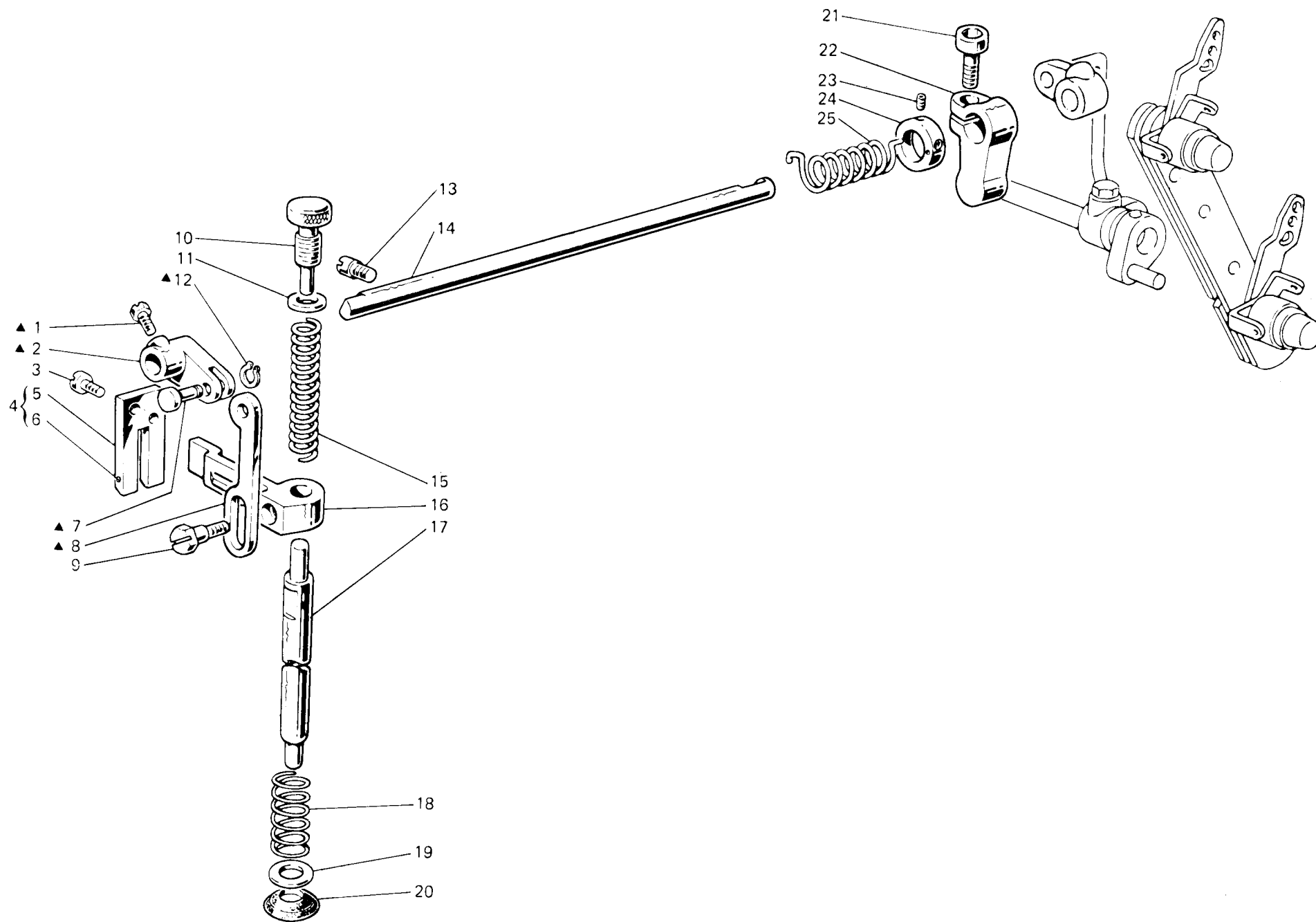


Fig. N. Abb. N.	Part. N. Piece N. Bestell N. Pieza N.	Qt. Anzahl	DESCRIZIONE	DESCRIPTION	DESCRIPTION	BENENNUNG	DESCRIPCION
▲	308060-4-00	1	gruppo manov.tirante premist.	presser crak assembly	groupe maniv.tirant presseur		
1	740632-2-00	1	vite	screw	vis		
2	308059-0-00	1	manovella	crank	manivelle		
3	721494-2-00	2	vite fissa piastra	plate screw	vis blocage plaque		
4	308052-4-00	1	piastra guida barra compl.	plate assembly	plaque complète		
5	308056-0-01	1	piastra guida barra	plate	plaque		
6	707240-0-00	1	spina elastica	split pin	goupille réglable		
7	308058-0-00	1	spina	pin	goupille		
8	308057-0-00	1	tirante per alza piedino	presser foot tie-rod	tirant soulèv.pied presseur		
9	740444-2-00	1	vite fissa slitta	screw	vis		
10	302060-0-11	1	pomolo di regolazione	adjustment knob	pommeau de réglage		
11	302344-0-10	1	rondella	washer	rondelle		
12	700205-0-00	1	anello elastico	spring ring	anneau ressort		
13	308007-0-00	1	perno filettato	threaded pin	pivot fileté		
14	302234-0-10	1	albero	shaft	arbre		
15	302059-0-10	1	molla premi piedino	spring	ressort pied presseur		
16	308055-2-00	1	guida a forcella	forket guide	guide à fourchette		
17	308061-0-01	1	barra porta piedino	presserfoot bar	barre porte-pied presseur		
18	308148-0-00	1	molla	spring	ressort		
19	704236-2-00	1	rondella	washer	rondelle		
20	308054-0-01	1	paraolio	oil retainer	pare-huile		
21	744332-2-00	1	vite	screw	vis		
22	308412-2-02	1	fascetta di fermo con vite	clamp with screw	bride de fixation avec vis		
23	745827-2-00	2	vite	screw	vis		
24	304767-2-11	1	anello per molla	ring	bague		
25	308098-0-00	1	molla di torsione	spring	ressort de torsion		

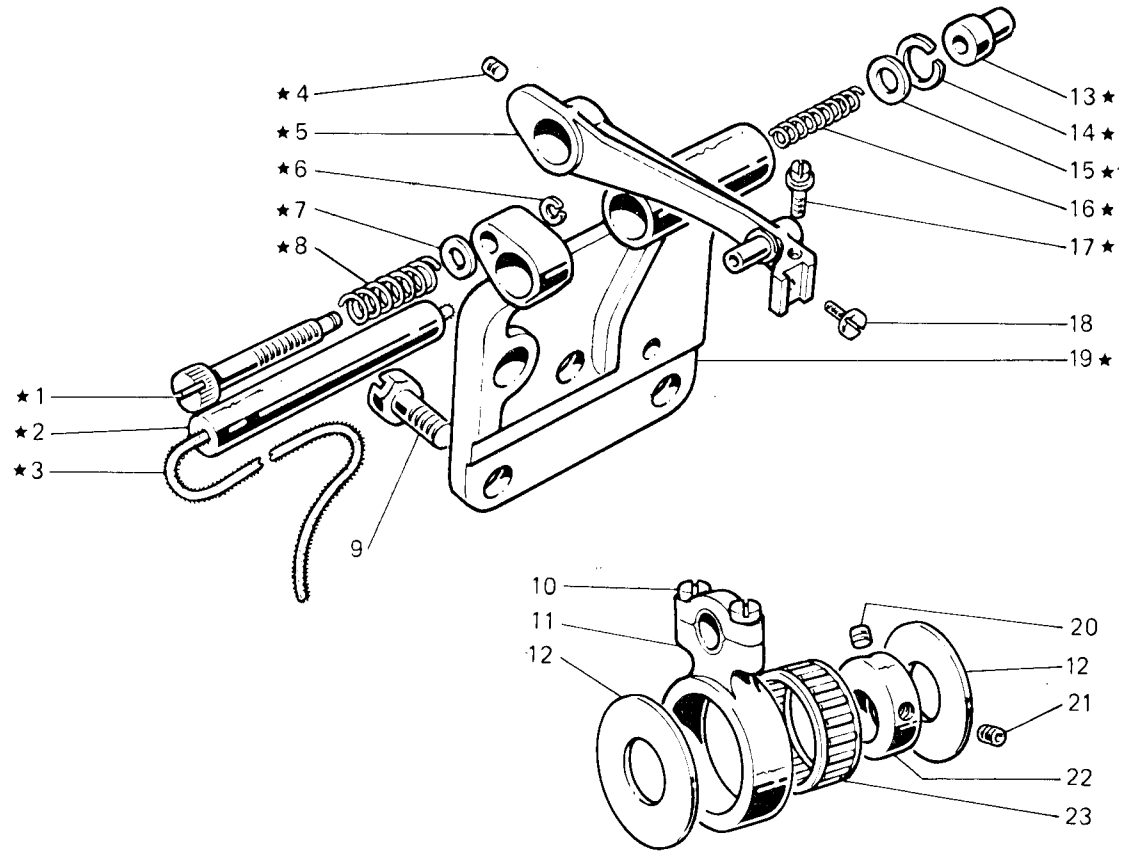


Fig. N. Abb. N.	Part. N. Bestell N. Piecce N. Pieza N.	Qt. Anzahl	DESCRIZIONE	DESCRIPTION	DESCRIPTION	BENENNUNG	DESCRIPCION
★	309685-4-00	1	porta coltello sup, compl.	upper knife holding assembly	porte-couteau sup. compl.		
1	304886-0-10	1	vite	screw	vis		
2	304879-0-10	1	perno	pin	pivot		
3	778439-0-00	1	stoppino	wick	mèche		
4	304324-0-10	1	vite	screw	vis		
5	307468-2-00	1	leva porta coltello	lever	levier		
6	700206-0-00	1	anello elastico	spring ring	anneau ressort		
7	704226-2-00	1	rondella	washer	rondelle		
8	304885-0-10	1	molla	spring	ressort		
9	720485-2-00	2	vite	screw	vis		
10	204800-0-10	2	vite per biella	screw for con-rod	vis pour bielle		
11	304881-3-10	1	biella com. coltello super.	con-rod for upper knife	bielle com. couteau sup.		
12	703823-0-00	2	rondella	washer	rondelle		
13	308906-0-00	1	raccordo stoppino	wick pipe connection	raccord mèche		
14	700112-0-00	1	anello elastico	spring ring	anneau ressort		
15	705213-0-00	1	rondella	washer	rondelle		
16	304884-0-11	1	molla	spring	ressort		
17	304925-0-10	1	vite	screw	vis		
18	721473-0-00	1	vite fissa coltello sup.	screw fixing upper knife	vis blocage couteau sup.		
19	308904-0-01	1	supporto	support	support		
20	307485-0-00	1	vite	screw	vis		
21	730023-2-00	1	vite a punta	screw	vis		
22	307481-2-00	1	eccentrico com. colt. sup.	upper knife eccentric	excentrique com. couteau sup.		
23	302856-0-10	1	gabbia a rullini	needles cage	cage à aiguilles		

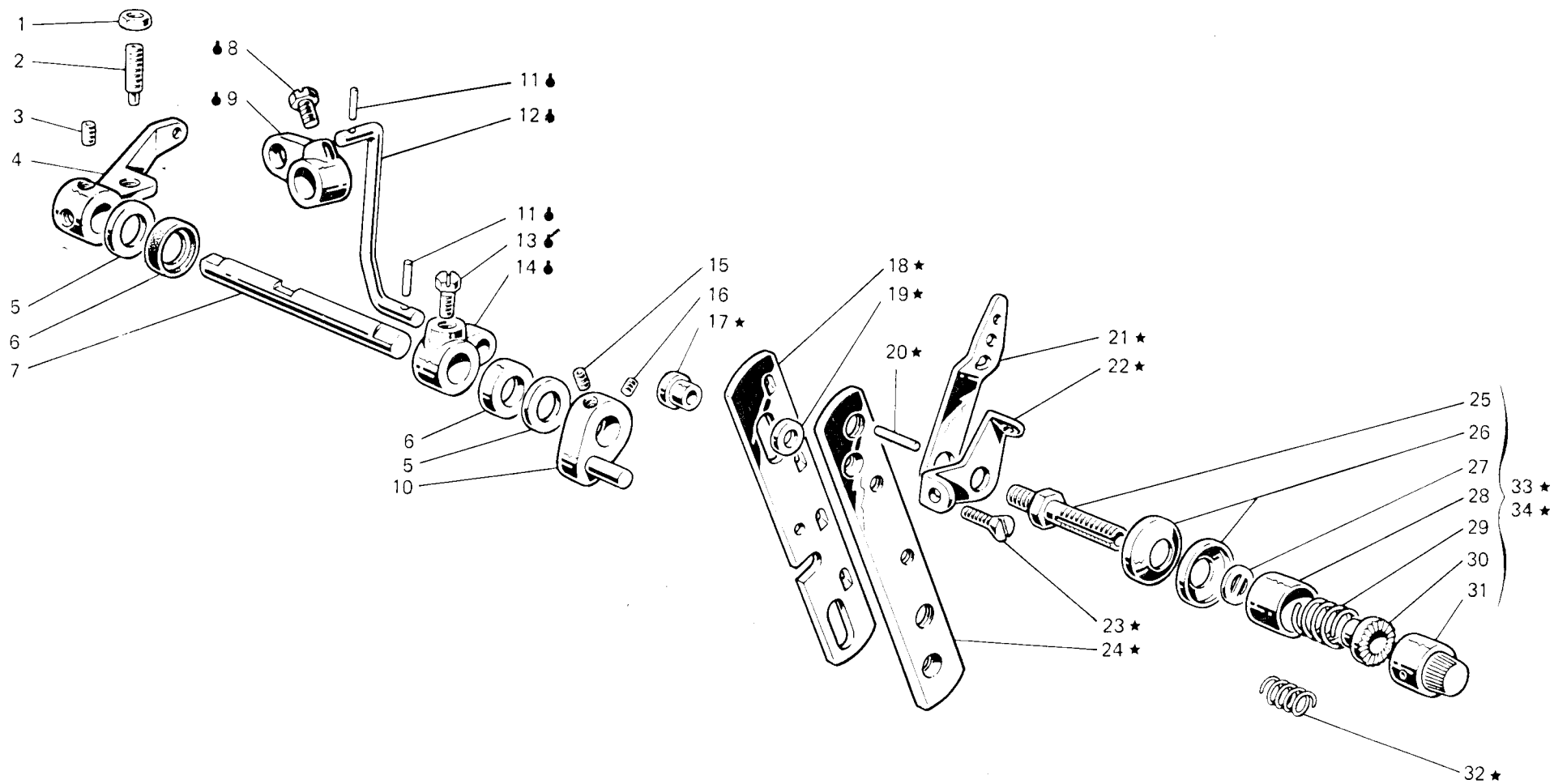


Fig. N. Abb. N.	Part. N. Bestell N. Piece N. Pieza N.	Qt. Anzahl	DESCRIZIONE	DESCRIPTION	DESCRIPTION	BENENNUNG	DESCRIPCIÓN
★	308529-4-00	1	gruppo tensioni	tensions assembly			
●	308320-4-00	1	tirante con leva	tie-rod with lever	groupe tensions		
1	746204-2-00	1	dado	nut	tirant avec levier		
2	729904-2-00	1	vite	screw	écrou		
3	729034-2-00	2	vite per leva	screw for lever	vis		
4	308062-2-01	1	leva con viti e dado	lever with screws and nut	vis pour levier		
5	704240-2-00	2	rondella	washer	levier avec vis et écrou		
6	304763-0-10	2	anello di tenuta	retainer ring	rondelle		
7	308996-0-01	1	albero comando alza piedino	shaft	bague d'étanchéité		
8	740632-2-00	1	vite	screw	arbre		
9	302232-0-10	1	leva superiore	upper lever	vis		
10	308495-2-00	1	leva sblocca tensione	lever	levier supérieur		
11	707241-0-00	2	spina elastica	split pin	levier		
12	308321-0-00	1	tirante	tie-rod	goupille réglable		
13	740034-0-00	1	vite per leva	screw	tirant		
14	302238-0-11	1	leva per tirante	tie-rod lever	vis		
15	745126-2-00	1	vite	screw	levier pour tirant		
16	727834-2-00	1	vite	screw	vis		
17	308512-0-00	2	distanziale	spacer	vis		
18	308502-0-00	1	slitta per tensione	slide for tension	entretoise		
19	701007-0-00	2	anello	ring	glissière pour tension		
20	308506-0-00	2	pernetto	pin	anneau		
21	308501-0-01	2	passafilo	thread guide	pivot		
22	308503-0-01	2	guidafilo	thread guide	passe-fil		
23	744676-2-00	2	vite	screw	guide-fil		
24	308504-0-00	1	supporto	support	vis		
25	308505-0-00	2	perno a vite	threaded pin	support		
26	300218-0-10	4	disco tensione	tension disc	pivot à vis		
27	308507-0-00	2	rondella	washer	disque tension		
28	202556-0-00	2	scodellino	cup	rondelle		
29	200710-0-10	1	molla	spring	cuvette		
30	202229-0-10	2	bussola superiore	upper bush	ressort		
31	202558-2-00	2	pomolo	knob	bague supérieure		
32	200714-0-10	1	molla	spring	pommeau		
33	308518-4-00	1	tensione sup. con molla fig. 29	upper tension with spring fig. 29	ressort		
34	308521-4-00	1	tensione inf. con molla fig. 32	lower tension with spring fig. 32	tension sup. avec ressort fig. 29		
					tension inf. avec ressort fig. 32		

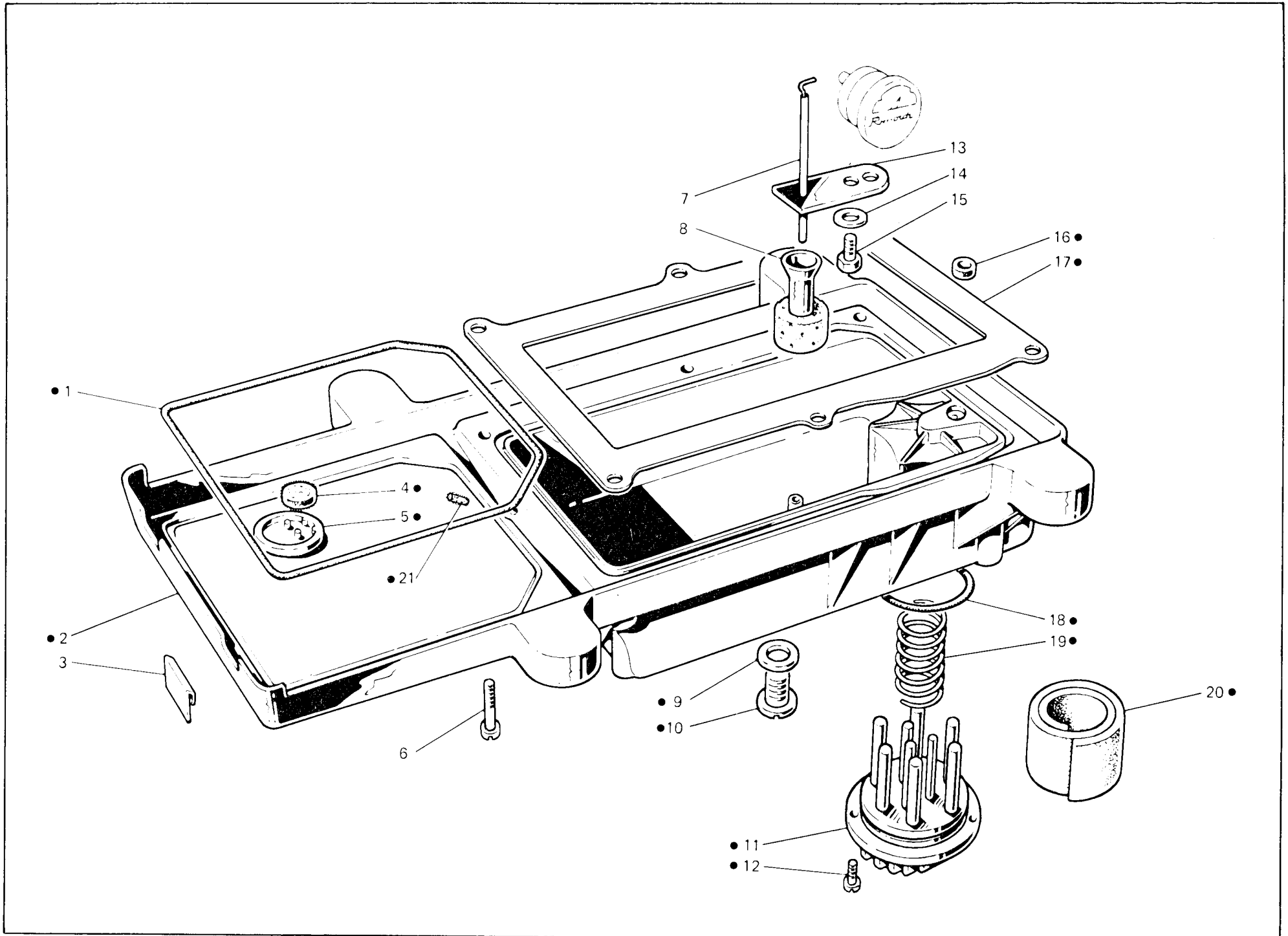


Fig. N. Abb. N.	Part. N. Bestell N. Piece N. Pieza N.	Qt. Anzahl	DESCRIZIONE	DESCRIPTION	DESCRIPTION	BENENNUNG	DESCRIPCION
●	308591-4-03	1	bacinella olio completa	oil sump assembly		réservoir huile complet	
1	308125-0-01	1	guarnizione	gasket		garniture	
2	308579-2-10	1	bacinella	oil sump		réservoir	
3	308002-0-00	2	piastrina per bacinella	sheet for oil sump		plaquette pour réservoir	
4	308151-0-01	1	filtro	filter		filtre	
5	308150-0-10	1	scodellino recupero olio	cup		cuvette	
6	722453-2-00	6	vite per fiss. bacinella	oil sump fixing screw		vis blocage réservoir	
7	308379-0-00	1	asta livello olio	stick		jauge niveau huile	
8	308228-2-00	1	galleggiante	float		flotteur	
9	705977-0-00	1	rondella	washer		rondelle	
10	206564-0-00	1	tappo	plug		bouchon	
11	206560-0-10	1	coperchio	cover		couvercle	
12	722063-2-00	2	vite	screw		vis	
13	308226-0-02	1	guida astina	guide for stick		guide barre	
14	703003-0-00	1	rondella elastica	spring washer		rondelle élastique	
15	740240-0-00	1	vite	screw		vis	
16	308113-0-00	1	anello	ring		anneau	
17	311395-0-00	1	guarnizione	gasket		garniture	
18	701051-0-00	1	guarnizione	gasket		garniture	
19	206545-0-00	1	molla a spirale	spring		ressort	
20	206559-0-00	1	filtro	filter		filtre	
21	778461-0-00	1	stoppino	wick		mèche	

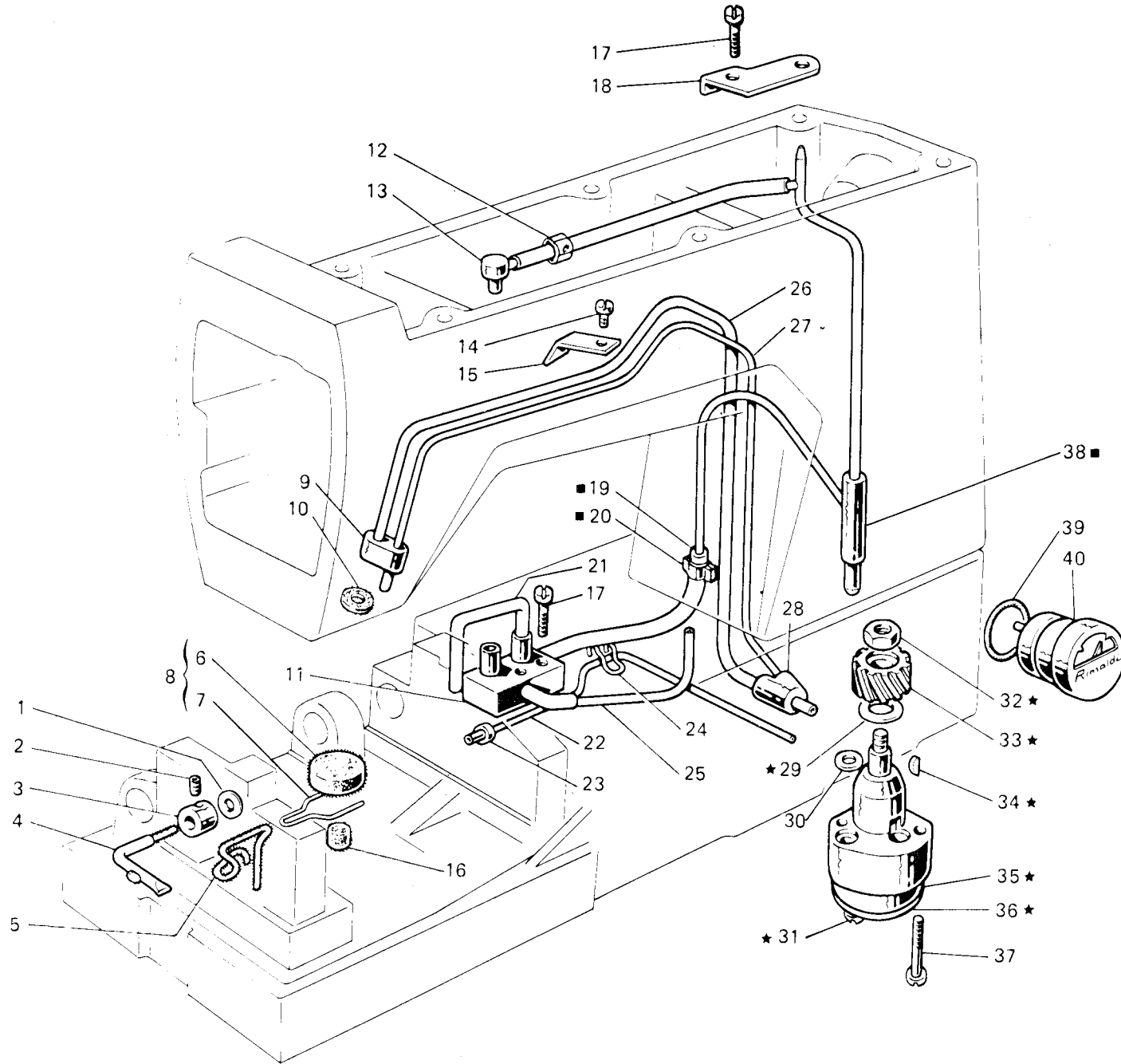


Fig. N. Abb. N.	Part. N. Piece N. Bestell N. Pieza N.	Qt. Anzahl	DESCRIZIONE	DESCRIPTION	DESCRIPTION	BENENNUNG	DESCRIPCION
■	310500-4-00	1	raccordo mandata olio compl.	pipe connection assembly	raccord envoi huile compl.		
★	308105-4-03	1	pompa olio completa	oil pump assembly	pumpe huile complète		
1	300420-0-10	1	rondella	washer	rondelle		
2	730011-2-00	1	vite	screw	vis		
3	300419-0-10	1	raccordo	raccord	raccord		
4	308243-3-00	1	tubetto e stoppino	pipe and wick	tube et mèche		
5	778240-0-00	1	stoppino	wick	mèche		
6	308153-0-00	1	filtro	filter	filtre		
7	308154-0-00	1	molletta	spring	ressort		
8	308155-4-01	1	gruppo molletta con filtro	spring with filter assembly	groupe ressort avec filtre		
9	308123-0-00	1	raccordo superiore	upper pipe union	raccord supérieur		
10	308219-0-00	1	feltro	felt	feutre		
11	308114-2-01	1	distributore	distributor	distributeur		
12	308040-2-00	1	tubetto	pipe	tube		
13	308214-0-00	1	raccordo mandata olio	pipe union	raccord		
14	721424-2-00	1	vite	screw	vis		
15	308184-0-00	1	fascetta	clamp	bride		
16	308295-0-00	1	filtro	filter	filtre		
17	721514-0-00	3	vite	screw	vis		
18	308104-0-00	1	piastrina	plate	plaquette		
19	308207-0-00	1	tubetto	pipe	tube		
20	308043-0-00	1	fascetta	clamp	bride		
21	790307-0-00	1	tubetto	pipe	tube		
22	790325-0-00	1	tubetto	pipe	tube		
23	308212-0-00	1	bussolina olio	bush	bague		
24	308211-0-00	2	clip	clip	clip		
25	790315-0-00	1	tubetto	pipe	tube		
26	790342-0-00	1	tubetto recupero olio	pipe	tube		
27	790242-0-00	1	tubetto recupero olio	pipe	tube		
28	308185-0-00	1	raccordo inferiore	lower pipe union	raccord inférieur		
29	704813-0-00	1	rondella	washer	rondelle		
30	701004-0-00	1	anello di tenuta	oil ring	bague d'étanchéité		
31	741082-2-00	2	vite	screw	vis		
32	733507-0-00	1	dado	nut	écrou		
33	206555-0-01	1	ingranaggio	gear	engrenage		
34	206557-0-00	1	chiavetta	key	clavette		
35	308110-3-02	1	corpo pompa aspirante	suction pump body	corps pompe admission		
36	308111-0-00	1	coperchio pompa	pump cover	couvercle pompe		
37	741092-0-00	2	vite fissaggio pompa	pump fixing screw	vis fixation pompe		
38	308180-2-00	1	raccordo mandata olio	pipe union	raccord		
39	701032-0-00	1	anello di tenuta	oil ring	bague d'étanchéité		
40	206669-2-02	1	indicatore livello olio	oil level gauge	indicateur niveau huile		

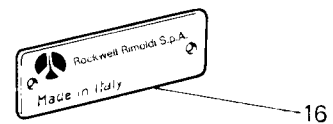
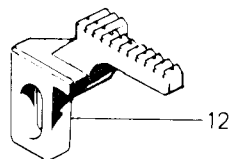
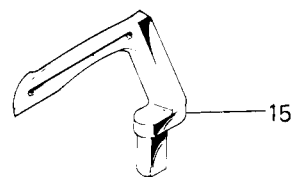
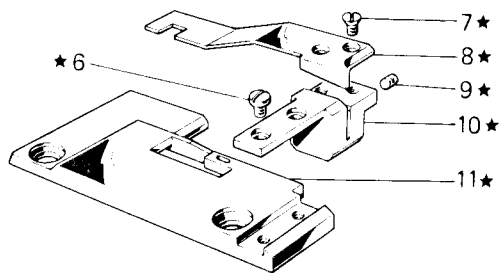
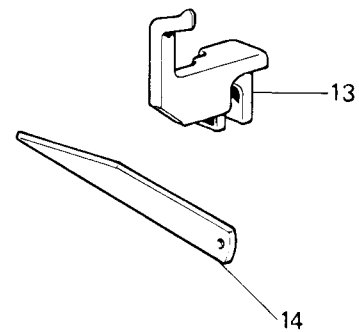
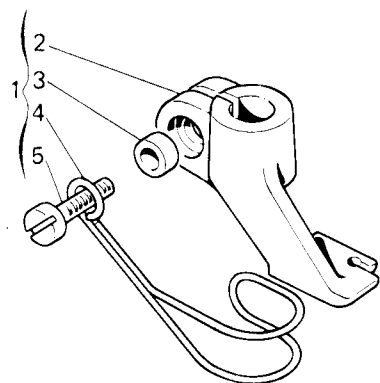


Fig. N. Abb. N.	Part. N. Bestell N. Piece N. Pieza N.	Qt. Anzahl	DESCRIZIONE	DESCRIPTION	DESCRIPTION	BENENNUNG	DESCRIPCION
★	307467-4-00	1	placca ago completa	needle plate assembly			
1	307470-4-00	1	piedino completo	presserfoot assembly	plaque à aiguille complète		
2	307469-0-00	1	piedino	presserfoot	pied-presseur complet		
3	303504-0-10	1	distanziale	spacer	pied-presseur		
4	307476-0-00	1	salvadita	protection	entretoise		
5	721473-0-00	1	vite	screw	protection		
6	304924-0-10	2	vite	screw	vis		
7	744512-0-00	2	vite	screw	vis		
8	307464-0-00	1	piastrina	plate	vis		
9	745800-2-00	1	vite	screw	plaque		
10	309686-0-00	1	porta coltello	knife holder	vis		
11	307466-0-00	1	placca ago	needle plate	porte-couteau		
12	307465-0-00	1	griffa	feed dog	plaque à aiguille		
13	309679-0-00	1	coltello superiore	upper knife	griffe		
14	304891-0-11	1	coltello inferiore	lower knife	couteau supérieur		
15	303419-0-11	1	crochet inferiore	lower looper	couteau inférieur		
16	785314-0-30	1	targhetta classe testa	head class plate	crochet inférieur		
					plaque classe tête		

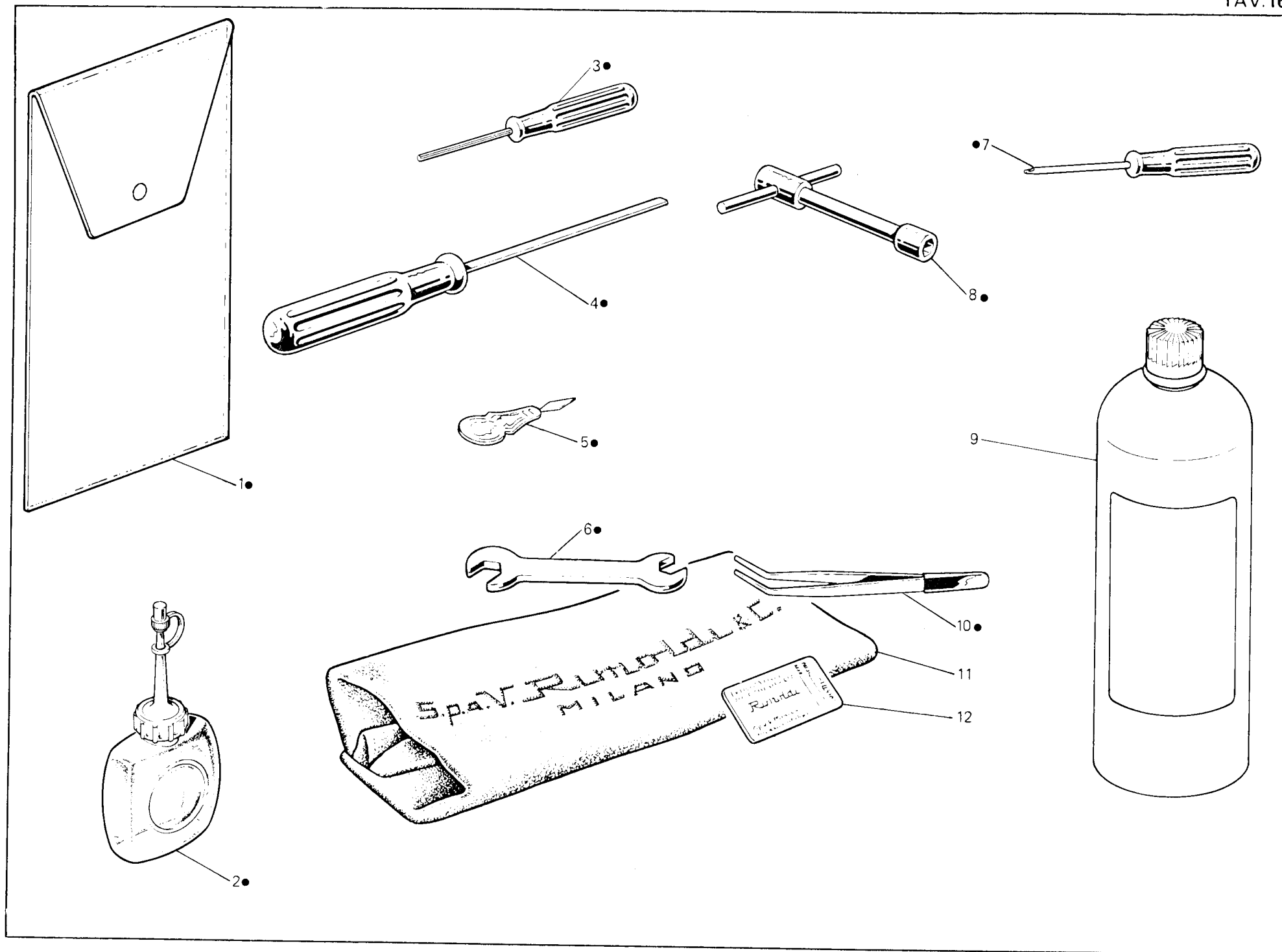


Fig. N. Abb. N.	Part. N. Piece N. Bestell N. Peza N.	Qt. Anzahl	DESCRIZIONE	DESCRIPTION	DESCRIPTION	BENENNUNG	DESCRIPCION
●	991408-4-00	1	busta accessori completa	accessories envelope assembly	envelope accessoires complète		
1	991415-0-00	1	busta accessori	accessories envelope	envelope accessoires		
2	990175-0-10	1	oliatore	oiler	graisseur		
3	990474-0-11	1	chiave esagonale da 1,5 mm	1,5 mm hexagonal key	clé hexagonale da 1,5 mm		
4	990181-0-10	1	cacciavite medio	screw-driver	tournevis moyen		
5	990188-0-10	1	infila aghi	needle threading	enfiles aiguilles		
6	990193-0-00	1	chiave da 5-7 mm	5-7 mm key	clé da 5-7 mm		
7	990182-0-10	1	cacciavite piccolo	screw driver	petite tournevis		
8	990587-0-10	1	chiave a tubo da 9 mm	9 mm key	clé à tube de 9 mm		
9	990075-1-13	1	lattina olio kg.1	oil container (1kg.)	bidon huile de 1 kg.		
10	990176-0-10	1	pinza per infilatura	threading tweezers	pince pour infilage		
11	990578-0-12	1	cuffia protez.macchina	machine cover	couverture protection machine		
12	★	1	bustina aghi	needle packet	paquette aiguille		
			★ per l'ordinazione della bustina citare lo stesso simbolo dell'ago montato sulla testa	★ to order packet of needles please specify symbol of needle fitted on machine	★ pour commander un sachet d'aiguilles donner le symbol de l'aiguille montée sur la tête		

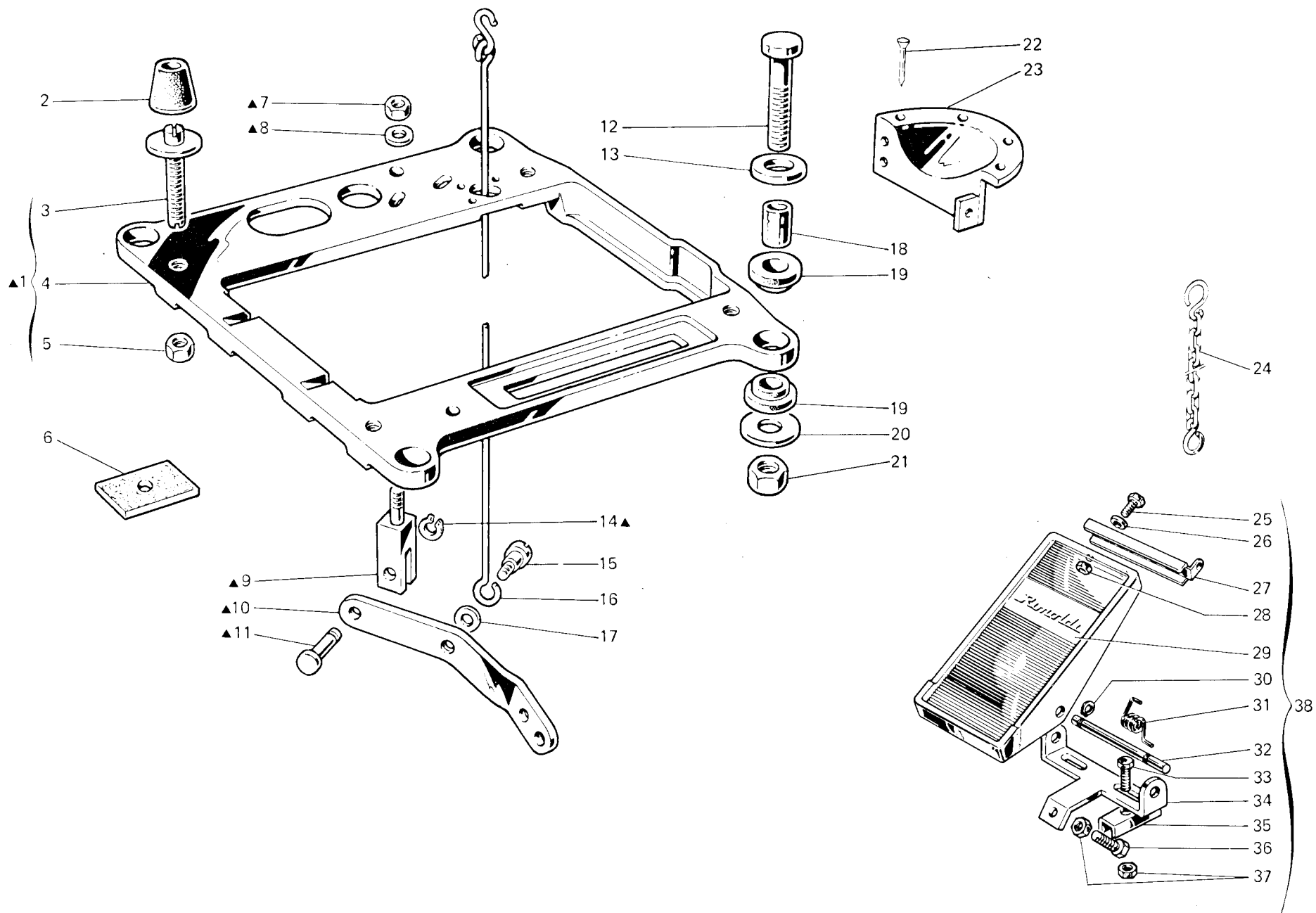


Fig. N. Abb. N.	Part. N. Bestell N. Piece N. Pieza N.	Qt. Anzahl	DESCRIZIONE	DESCRIPTION	DESCRIPTION	BENENNUNG	DESCRIPCION
			PIAZZAMENTO NORMALE	NORMAL SETTING	INSTALLATION NORMAL		
▲	991253-4-00	1	supporto testa completo	head support assembly	support tête complet		
1	991251-4-00	1	supporto testa con perno	head support with pin	support tête avec pivot		
2	990982-0-00	4	ammortizzatore	shock absorber	amortisseur		
3	900694-0-11	4	perno	pin	pivot		
4	991250-0-00	1	supporto testa	head support	support tête		
5	733008-2-00	4	dado	nut	écrou		
6	900203-0-10	4	ammortizzatore per tavola	shock absorber	amortisseur pour table		
7	746409-2-00	1	dado	nut	écrou		
8	704316-2-00	1	rondella	washer	rondelle		
9	991256-0-00	1	supportino per leva	support for lever	support pour levier		
10	991255-0-00	1	leva	lever	levier		
11	991257-0-00	1	perno	pin	pivot		
12	722905-2-00	4	vite	screw	vis		
13	704346-2-00	4	rondella	washer	rondelle		
14	700208-0-00	1	anello elastico	spring ring	anneau ressort		
15	743541-2-00	1	vite	screw	vis		
16	991259-3-00	1	tirante	tie-rod	tirant		
17	704310-2-00	1	rondella	washer	rondelle		
18	901102-0-00	4	distanziale	spacer	entretoise		
19	901101-0-00	8	ammortizzatore	shock absorber	amortisseur		
20	704345-2-00	4	rondella	washer	rondelle		
21	733813-0-00	4	dado	nut	écrou		
22	900201-0-10	7	chiodini	rivets	clous		
23	990317-0-10	1	protezione volante	handwheel protection	protection volant		
24	990179-4-11	1	catenella	chain	chaînette		
25	720464-4-00	2	vite	screw	vis		
26	704009-4-00	2	rondella	washer	rondelle		
27	900926-0-00	1	attacco	coupling	raccord		
28	733508-4-00	2	dado	nut	écrou		
29	900931-0-00	1	copertura	cover, g	couverture		
30	900918-0-00	2	anello elastico	spring ring	anneau ressort		
31	900927-0-00	1	molla	spring	ressort		
32	900928-0-00	1	perno	pin	pivot		
33	720505-4-00	2	vite	screw	vis		
34	900929-0-01	1	supporto	support	support		
35	900920-0-00	2	piastrina	plate	plaquette		
36	720545-4-00	1	vite	screw	vis		
37	733510-4-00	3	dado	nut	écrou		
38	900925-4-01	1	pedalina completa	pedal assembly	pédale complète		

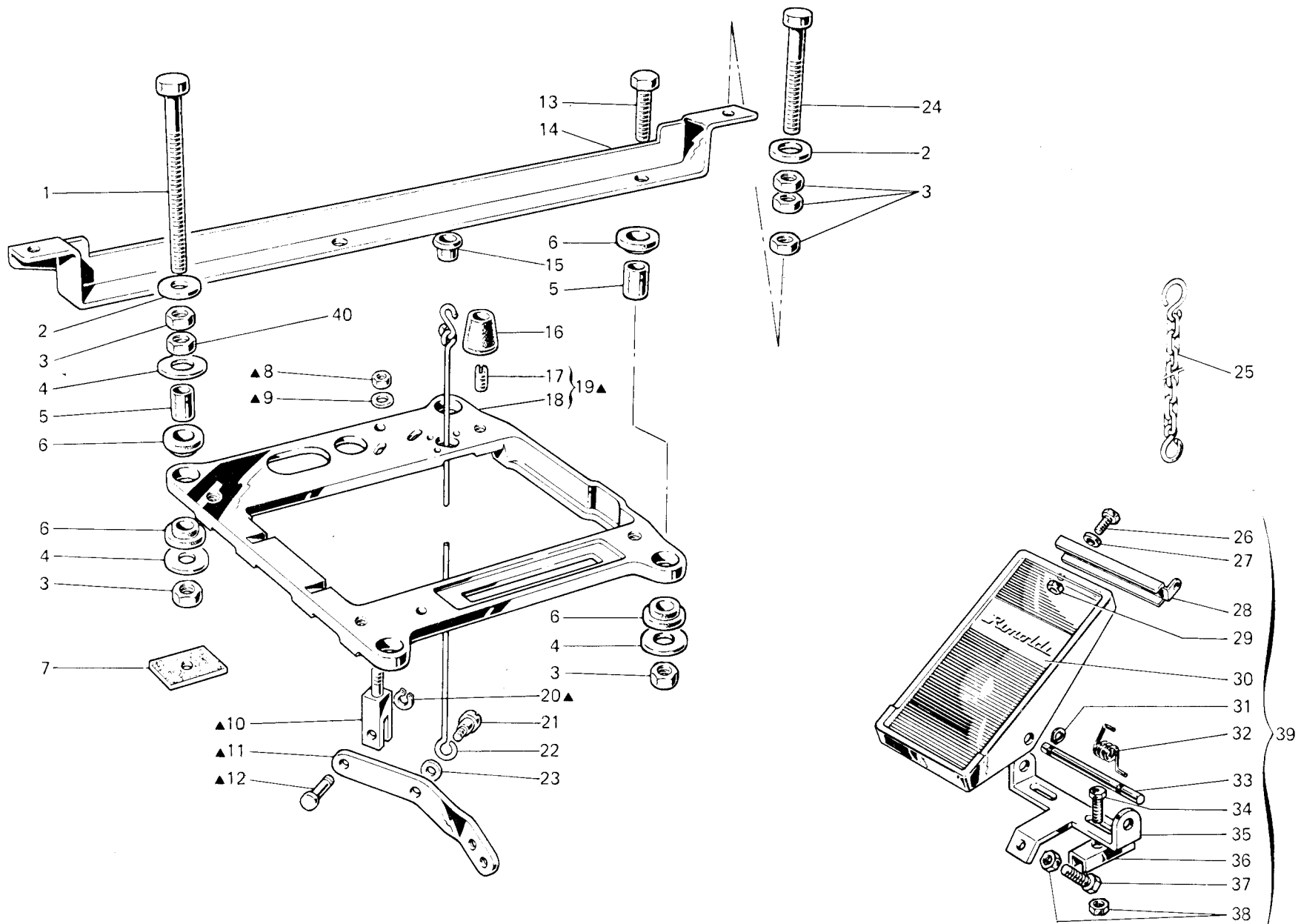


Fig. N. Abb N.	Part. N. Piece N. Bestell N. Pieza N.	Qt. Anzahl	DESCRIZIONE	DESCRIPTION	DESCRIPTION	BENENNUNG	DESCRIPCION
			PIAZZAMENTO INCASSATO	SUBMERGED SETTING	INSTALLATION ENCASTREE		
▲	991254-4-00	1	supporto testa completo	head support assembly	support tête complet		
1	722920-2-00	2	vite	screw	vis		
2	704346-2-00	4	rondella	washer	rondelle		
3	733813-0-00	10	dado	nut	écrou		
4	704345-2-00	6	rondella	washer	rondelle		
5	901102-0-00	4	distanziale	spacer	entretoise		
6	901101-0-00	8	ammortizzatore	shock absorber	amortisseur		
7	900203-0-10	4	ammortizzatore per tavola	shock absorber	amortisseur pour table		
8	746409-2-00	1	dado	nut	écrou		
9	704316-2-00	1	rondella	washer	rondelle		
10	991256-0-00	1	supportino per leva	support for lever	support pour levier		
11	991255-0-00	1	leva	lever	levier		
12	991257-0-00	1	perno	pin	pivot		
13	720546-0-00	2	vite	screw	vis		
14	901251-2-00	1	staffa	bracket	bride		
15	900204-0-10	1	bussola	bush	bague		
16	990982-0-00	4	ammortizzatore	shock absorber	amortisseur		
17	901253-0-00	4	vite	screw	vis		
18	991250-0-00	1	supporto testa	head support	support tête		
19	991252-4-00	1	supporto testa con viti	head support with screws	aupport tête avec vis		
20	700208-0-00	1	anello elastico	spring ring	anneau ressort		
21	743541-2-00	1	vite	screw	vis		
22	991259-3-00	1	tirante	tie-rod	tirant		
23	704310-2-00	1	rondella	washer	rondelle		
24	722907-2-00	2	vite	screw	vis		
25	990179-4-11	1	catenella	chain	chaînette		
26	720464-4-00	2	vite	screw	vis		
27	704009-4-00	2	rondella	washer	rondelle		
28	900926-0-00	1	attacco	coupling	raccord		
29	733508-4-00	2	dado	nut	écrou		
30	900931-0-00	1	copertura	covering	couverture		
31	900918-0-00	2	anello elastico	spring ring	anneau ressort		
32	900927-0-00	1	molla	spring	ressort		
33	900928-0-00	1	perno	pin	pivot		
34	720505-4-00	2	vite	screw	vis		
35	900929-0-01	1	supporto	support	support		
36	900920-0-00	2	piastrina	plate	plaquette		
37	720545-4-00	1	vite	screw	vis		
38	733510-4-00	3	dado	nut	écrou		
39	900925-4-01	1	pedalina completa	pedal assembly	pédale complète		
40	733008-2-00	4	dado	nut	écrou		

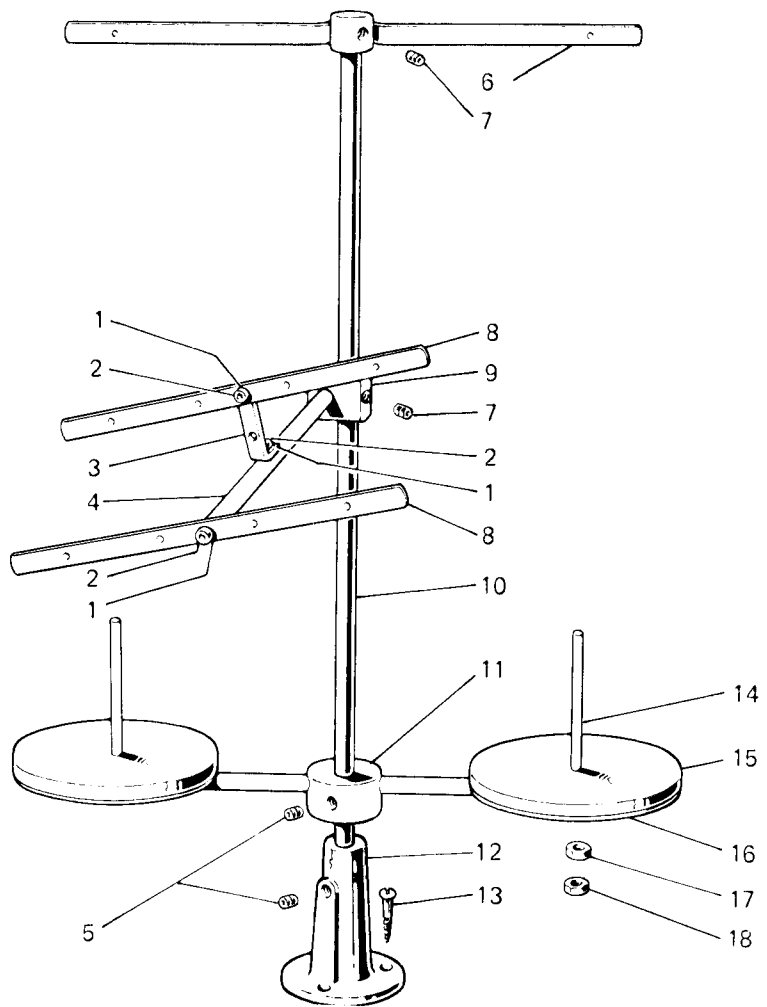


Fig. N. Abb. N.	Part. N. Piece N. Bestell N. Pieza N.	Qt. Anzahl	DESCRIZIONE	DESCRIPTION	DESCRIPTION	BENENNUNG	DESCRIPCION
★	991100-5-00	1	porta bobine compl.(1-2 fili)	bobbin carrier assembly	porte bobine complet		
1	703005-0-00	3	rondella	washer	rondelle		
2	722431-2-00	3	vite	screw	vis		
3	991107-2-00	1	squadretta con viti e rondelle	bracket with screws and washer	équerre avec vis et rondelles		
4	991106-2-00	1	asta con vite e rondella	rod with screw and washer	tige avec vis e rondelle		
5	729054-2-00	3	vite	screw	vis		
6	991101-3-00	1	telaio sup.compl.con vite	upper frame ass.with screw	bâti supérieur avec vis		
7	729034-2-00	3	vite	screw	vis		
8	991108-2-00	2	telaietto con bussole	frame with bushes	bâti avec bagues		
9	991110-2-00	1	blocchetto con viti	block with screws	bloc avec vis		
10	991113-0-00	1	asta principale	main rod	tige principale		
11	991115-3-00	1	mozzo con asta e vite	hub with pin and screw	moyeu avec tige et vis		
12	991114-2-00	1	basetta con vite	base with screw	base avec vis		
13	731107-2-00	3	vite	screw	vis		
14	991111-2-00	2	astina con dadi	rod with nuts	tige avec écrous		
15	991179-0-00	2	disco	disc	disque		
16	991112-0-00	2	piatto	disc	plateau		
17	733508-2-00	2	dado	nut	écrou		
18	925433-0-00	2	dado	nut	écrou		