

264-42-2ML-01

n.135
652692060

UFFICIO CATALOGHI

Il presente Catalogo Pezzi di Ricambio è costituito da due parti: la prima, definita come "Catalogo base", comprende i particolari montati sulla testa più significativa (la prima dell'elenco in copertina); la seconda comprende tutti i particolari delle altre teste basi o derivate, che differiscono da quella del Catalogo base.

Le Teste basi sono elencate in copertina con un carattere più grande rispetto a quello delle derivate.

Nella consultazione del Catalogo tenere presente che:

1. Tutti i particolari non fornibili sciolti non vengono richiamati singolarmente, ma soltanto illustrati nel gruppo d'appartenenza.
2. I riferimenti delle figure dei particolari che compongono il gruppo sono di norma raggruppati in una parentesi. In alcuni casi però, dove non è possibile il raggruppamento, i numeri che nelle tavole illustrative richiamano i singoli pezzi sono affiancati dallo stesso segno particolare, con cui è indicato l'intero gruppo.
3. Sulle tavole relative alle altre teste sono elencati tutti i particolari diversi o non montati sulla testa del Catalogo Base. Dette tavole portano in alto a destra il simbolo della testa cui si riferiscono (con indicato fra parentesi - nel caso di derivata - il simbolo della testa da cui deriva).
I disegni di questo gruppo di tavole illustrano soltanto i pezzi nuovi o sostanzialmente diversi rispetto a quelli montati sulla testa più significativa del Catalogo.
I particolari richiamati come simbolo, ma non illustrati, conservano lo stesso numero di figura dei corrispondenti raffigurati sul Catalogo base.
I particolari comuni a tutte le teste comprese nel Catalogo, vengono richiamati soltanto nel primo gruppo di tavole.
I particolari definiti come "pezzi annullati" si intendono quelli non montati sulla testa a cui la tavola si riferisce. Nel caso di un gruppo annullato, viene indicato soltanto il simbolo del gruppo, ma devono intendersi annullati anche tutti i particolari componenti il gruppo stesso.
Per ogni testa viene sempre riportata interamente la tavola relativa agli organi di cucitura.

Per facilitare la ricerca viene riportato l'indice numerico di tutti i particolari illustrati sul Catalogo base, con la relativa tavola in cui gli stessi sono richiamati.

AGHI

Gli aghi sono contraddistinti dal sistema e dalla finezza, la quale indica il diametro medio espresso in centesimi di millimetro.

Il sistema dell'ago e la finezza sono marcati oltre che sulla busta, anche sull'ago stesso.

Nelle ordinazioni precisare, oltre il simbolo, il sistema e la finezza degli aghi desiderati. In caso di dubbio, allegare, un ago campione o una bustina vuota.

AVVERTENZA

Nella richiesta di parti di ricambio citare sempre il relativo numero di matricola della macchina, il simbolo del particolare e la denominazione ufficiale usata sul catalogo.

This spare parts catalogue is made up of two parts: in the first one, called "basic catalogue", all the details of most representative head are listed (the first head listed on the cover); the second one includes the details of the other main heads or derived ones, which are different from that of the basic catalogue.

The main heads are listed on the cover in bigger lettering to distinguish them from the derived heads.

When you consult the catalogue will you please note that:

1. all parts which cannot be supplied by themselves are not indicated alone, but shown together with the group to which they belong;
2. the references of the pictures of the parts making up the group are usually put in brackets.
In some cases, however, when their grouping is not possible, the numbers of the various parts in the tables are marked with the same particular sign with which the whole group is indicated.
3. In the tables of the other heads there are listed all the parts not fitted on the head in the basic catalogue.
These tables are marked at the top right-hand corner with the symbol of the head which the table refers to.
The drawings in this group of tables show only the parts which are new or basically different from those fitted on the most representative head in the catalogue.
The parts which are represented only by the symbol but not illustrated keep the same figure number as the corresponding parts shown in the basic catalogue.
The parts which are common to all the heads in the catalogue are listed only in the first group of tables.
Parts marked "annulled part" are those not fitted on the head which the table refers to.
When an assembly has been annulled only the assembly symbol is specified, but all the parts forming the assembly must also be considered annulled.
For each head the table for sewing parts is always repeated completely.

To make it easier to locate the parts, the reference numbers of all of those shown in the basic catalogue are listed together with the number of the table in which they are to be found.

NEEDLES

The needles are marked with system and size; the size indicates the average diameter in hundredths of a millimeter.

The system and size of the needle are shown on the packet as well as on the needle itself.
When ordering please state symbol, system and size. If you have doubts, enclose a sample needle or an empty packet with your order.

ATTENTION

When ordering spare parts always state the serial number of the machine, the symbol of the part in question and the description given in the catalogue.

Ce catalogue "pièces détachées" est formé de deux parties: la première appelée "catalogue base" comprend toutes les pièces montées sur la tête la plus significative (celle en tête de la liste de couverture), la seconde comprend toutes les pièces montées sur les autres têtes de base ou dérivées qui sont différentes de celle du "catalogue base".

Les têtes de base sont énumérées sur la couverture, en caractères plus grands que les têtes dérivées.

Lorsque l'on consulte le catalogue, se souvenir que:

1. Toutes les pièces qui ne sont pas fournies séparément mais qui font partie d'un groupe, ne sont pas indiquées séparément.
2. Les symboles des pièces qui forment un groupe sont regroupés entre parenthèses. Cependant, lorsque ceci n'a pas été possible, les symboles, qui dans les tables d'illustration correspondent aux pièces, sont suivis du même signe particulier qui indique le groupe tout entier.
3. Dans les tables relatives aux autres têtes, nous avons indiqué toutes les pièces différentes de celles de tête du "catalogue base" ou qui ne sont pas montées sur ces dernières. Ces tables portent, en haut à droite, le symbole des têtes auxquelles elles se réfèrent (pour les dérivées, le symbole de la tête de laquelle elles dérivent est indiqué entre parenthèses).
Les dessins de ce groupe de tables représentent seulement les nouvelles pièces ou celles qui sont différentes des pièces montées sur la tête la plus significative du catalogue.
Les pièces indiquées par un symbole, mais qui ne sont pas illustrées, gardent le même numéro de dessin que celles correspondantes, illustrées sur le catalogue base.
Les pièces communes à toutes les têtes du catalogue, sont indiquées seulement dans le premier groupe de tables.
Les pièces définies comme "pièces annulées" sont celles qui ne sont pas montées sur la tête à laquelle se réfère la table. Dans le cas de l'annulation d'un groupe, nous indiquons seulement le symbole du groupe, mais toutes les pièces qui forment ce groupe sont annulées.
Pour chaque tête est toujours indiquée la table se référant aux organes de couture.

Pour faciliter la recherche, le catalogue renferme l'index numérique de toutes les pièces illustrées avec indication de la table dans laquelle elles sont indiquées.

AIGUILLES

Les aiguilles se différencient par le système et la grosseur, laquelle indique le diamètre moyen exprimé en centièmes de millimètre.

Le système de l'aiguille et sa grosseur, sont indiqués non seulement sur le sachet mais également sur l'aiguille.

Dans la commande, préciser, en plus du symbole, le système et la grosseur des aiguilles désirées. En cas de doute, joindre une aiguille comme modèle ou un sachet vide.

ATTENTION

Dans la commande de pièces détachées, indiquer toujours le numéro de la machine, le symbole de la pièce et la dénomination officielle mentionnée sur le catalogue.

SIMBOLO SYMBOL SYMBOLE	CARATTERISTICHE TESTE	MACHINE HEAD FEATURES	CARACTERISTIQUES TETES
264-42-2ML-01	<p>Particolarmente indicata per la formazione della cintura (partendo da strisce tagliate in sbieco), e la sua contemporanea applicazione in vita ai pantaloni da uomo. Con crochets frontali. Senza rulli dosatori e con rullo condotto dalla coppia di rulli trasportatori in gomma sintetica. Dotata di guide per una cintura di larghezza finita 54 mm (vedi Tab. R 120). Dotata inoltre di piano di lavoro scorrevole su guide (cassoncino).</p>	<p>Particularly suitable for forming and simultaneously attaching the inner waist band (obtained from strips cut on the bias) on men's trousers. Without metering rollers and with rear puller feed rollers, the free one of which is in synthetic rubber. Fitted with folders for finished width of waist band of 50 mm. On request it can be fitted with folders for finished width of waist band of 54 mm (see R 120 Tables). It has also a work whute sliding of rails. With frontal loopers.</p>	<p>Elle est particulièrement employée pour former et appliquer, en même temps, des ceintures (en partant de bandes coupées en biais) à la taille des pantalons pour homme. Avec crochets frontaux. Sans rouleaux doseurs et avec le rouleau libre du couple de rouleaux transporteurs recouvert en caoutchouc synthétique. Elle est équipée de guides permettant d'obtenir une ceinture finie de 50 mm. Sur demande elle peut être équipée de guides permettant d'obtenir des ceintures ayant une largeur finie égale à 54 mm (voir Tabl. R 120). Elle est également dotée d'un conduit mobile de travail coulissant sur rails.</p>

INDICE NUMERICO INDEX

Part. N.	Tav. N.	Part. N.	Tav. N.	Part. N.	Tav. N.	Part. N.	Tav. N.	Part. N.	Tav. N.	Part. N.	Tav. N.	Part. N.	Tav. N.
100458-0-10	9	300482-0-10	7-8	302355-0-10	3-4	304248-0-10	2	307618-0-10	11	308040-2-00	15	308139-2-01	9
200710-0-10	13	300483-0-10	2-3	302356-0-10	1	304249-0-10	2	307619-0-10	11	308041-0-00	9	308148-0-00	10
200714-0-10	13	300710-0-10	16	302590-4-10	9	304253-0-10	4	307645-4-00	4	308042-0-00	9	308149-0-01	5
201128-0-10	9	301458-0-10	4	302591-0-10	9	304254-3-10	4	307651-0-00	12	308043-0-00	15	308150-0-10	14
201143-0-10	4	301459-4-10	4	302708-0-01	12	304255-0-10	4	307652-3-00	11	308044-0-00	8	308151-0-00	14
201236-0-10	16	301479-0-10	17	302856-0-10	4	304256-4-10	4	307656-0-11	11	308045-0-01	8	308153-0-01	15
202032-0-11	9	301480-0-10	17	303045-0-10	2	304261-0-10	4	307662-2-00	4	308046-2-01	8	308154-0-00	15
202165-0-10	3	301510-0-10	11	303458-0-12	6	304262-4-10	4	307663-0-00	12	308047-0-00	8	308155-4-01	15
202229-0-10	13	301519-2-11	4	303501-0-10	1	304268-0-10	16	307664-0-00	1	308054-0-00	10	308159-2-01	5
202239-0-10	3	301523-0-10	12	303899-0-10	9	304276-2-10	16	307678-2-00	12	308055-2-00	10	308161-0-00	5
202397-0-10	16	301527-0-10	12	303958-0-10	3	304283-3-10	16	307691-2-00	12	308056-0-00	10	308162-0-00	5
202486-0-10	4-7-17	301530-2-10	12	304020-0-10	14	304284-3-10	16	307696-2-10	11	308057-0-00	10	308166-0-00	5
202487-0-10	10	301531-0-10	12	304021-0-10	14	304287-0-10	7	307697-0-00	11	308058-0-00	10	308174-3-00	5
202556-0-00	13	301532-0-10	12	304107-0-10	17	304288-0-10	16	307701-0-00	11	308059-0-00	10	308178-4-00	5
202558-2-00	13	301533-4-10	12	304136-4-00	9	304294-3-10	16	307705-0-00	11	308060-4-00	10	308180-2-00	15
203589-0-10	16	301534-0-10	12	304144-0-10	1	304295-0-10	16	307712-0-00	12	308061-0-01	10	308184-0-00	15
204188-0-10	16	301535-4-10	12	304149-0-10	9	304296-0-10	16	307737-0-00	12	308062-2-00	13	308185-0-00	15
206545-0-00	14	301538-0-10	12	304153-0-00	7	304297-4-10	16	307738-4-00	12	308084-2-00	5	308190-0-00	4
206555-0-00	15	301539-0-10	12	304165-2-00	7	304298-4-10	16	307739-0-00	1	308086-0-00	1	308191-4-00	4
206557-0-00	15	301540-0-10	12	304166-2-20	7	304299-0-10	16	307740-0-00	4	308090-0-00	5	308193-2-00	4
206559-0-00	14	301546-0-10	12	304162-0-10	16	304310-2-10	7	307741-0-00	4	308094-0-00	1	308195-0-00	4
206560-0-10	14	301547-0-11	12	304167-4-20	7	304320-2-10	16	307747-4-00	4	308096-0-00	1	308203-0-01	2
206564-0-00	14	301579-0-10	4	304170-0-20	7	304321-2-00	16	307748-5-00	4	308098-0-00	10	308207-0-00	15
206583-0-00	9	301586-0-10	7	304171-0-10	7	304323-2-01	7	307749-0-00	4	308101-2-00	3	308211-0-00	15
206606-2-00	12	301594-0-10	12	304172-0-10	7	304330-0-10	2	307761-3-00	11	308102-0-10	3	308212-0-00	15
206669-2-01	15	301595-0-10	12	304175-0-10	7	304332-0-10	4	307762-0-00	11	308103-4-10	3	308214-0-00	15
300003-0-10	12	301632-0-10	12	304182-3-10	7	304394-0-00	7	308002-0-00	14	308104-0-00	15	308215-0-00	1
300006-0-11	3	301633-4-10	12	304186-0-11	16	304763-0-10	13	308005-0-00	9	308105-4-01	15	308218-0-00	1
300010-4-00	12	302059-0-10	10	304187-0-11	7	304767-2-10	10	308006-4-00	9	308110-3-00	15	308219-0-00	15
300120-0-10	16	302060-0-11	10	304188-0-10	2	305194-0-00	8	308007-0-00	10	308111-0-00	15	308220-0-00	9
300209-0-10	4	302136-0-11	2	304192-0-10	7	305825-3-00	8	308009-0-00	1	308113-0-00	14	308226-0-01	14
300218-0-10	13	302232-0-10	13	304194-0-10	7	306674-3-00	16	308012-2-00	5	308114-2-01	15	308228-2-00	14
300276-0-10	16	302234-0-10	10	304195-0-10	7	307594-4-00	11	308013-4-00	5	308119-0-00	4	308231-2-01	14
300351-0-11	8	302238-0-10	13	304197-2-10	7	307603-2-00	12	308015-0-00	6	308123-0-00	15	308232-0-00	1
300352-0-10	8	302272-0-10	5	304200-0-11	16	307605-0-00	11	308028-2-00	4	308125-0-00	14	308233-0-00	9
300377-0-10	12	302289-0-10	8	304221-0-11	16	307607-0-00	12	308031-0-00	1	308126-0-00	14	308234-2-00	9
300419-0-10	15	302292-0-10	9	304222-0-11	16	307610-2-10	11	308032-0-00	1	308127-0-00	5	308235-0-00	9
300420-0-10	15	302338-0-10	9	304240-0-10	4	307612-2-10	11	308036-2-00	9	308128-0-00	3	308236-2-00	9
300425-0-10	2	302344-0-10	10	304241-0-10	2	307615-0-10	11	308037-0-00	9	308129-0-00	3	308238-4-00	9
300429-0-10	2	302352-0-10	9	304242-4-10	2	307616-2-00	11	308038-0-10	9	308137-0-00	2	308239-0-00	9
300469-2-11	7	302353-0-10	3	304246-0-10	9	307617-0-10	11	308039-0-01	9	308138-0-11	1	308243-3-00	15

INDICE NUMERICO INDEX

Part. N.	Tav. N.	Part. N.	Tav. N.	Part. N.	Tav. N.	Part. N.	Tav. N.	Part. N.	Tav. N.	Part. N.	Tav. N.	Part. N.	Tav. N.
308244-4-00	9	308736-2-00	4	310066-4-00	16	704814-0-00	6-11	722452-2-00	7	741088-2-00	3	778216-0-00	4
308256-3-00	5	308737-0-00	1	310067-4-00	16	704828-0-00	9	722453-2-00	14	741092-0-00	15	778222-0-00	7
308278-0-00	6	308738-2-00	3	310356-4-00	5	704844-0-00	12	722905-2-00	19	741520-2-00	3-7	778225-0-00	7
308280-0-00	6	308746-0-01	7	310500-4-00	15	704846-0-00	4-7	722907-2-00	20	741657-0-00	16	778238-0-00	4
308281-0-00	6	308747-4-00	7	310521-4-00	11	704848-0-00	11	722920-2-00	20	741658-2-00	3	778240-0-00	15
308283-2-00	4	308802-0-00	5	311098-0-00	2	704849-0-00	8	724420-2-00	2	741675-2-00	8	778407-0-00	9
308285-0-00	4	308834-0-00	2	700205-0-00	10	704869-0-00	5-9	724441-0-00	6	741711-2-00	16	778461-0-00	14
308287-0-00	4	308851-2-01	9	700206-0-00	11	705013-0-00	5-9	724442-2-00	3	741761-0-00	12	788120-0-01	3
308293-0-01	1	308852-0-00	1	700208-0-00	19-20	705208-0-00	9	727012-0-00	12	742010-2-00	16	790242-0-00	15
308295-0-00	15	308853-0-00	1	700596-0-00	5	705734-0-00	7	727023-0-00	7	741055-0-00	16	790307-0-00	15
308296-0-00	1	308855-0-00	5-9	701004-0-00	15	705834-0-00	8	727834-2-00	4-13	742214-2-00	7	790315-0-00	15
308310-0-00	5	308858-0-00	1	701007-0-00	13	705970-0-00	3	727855-0-00	12	742222-2-00	5	790325-0-00	15
308320-4-00	13	308859-2-00	1	701009-0-00	8	705977-0-00	14	728232-0-00	4	742237-0-00	16	790342-0-00	15
308321-0-00	13	308996-0-01	13	701032-0-00	15	706285-0-00	1	729011-2-00	2	742282-2-00	3	900201-0-10	19
308326-2-01	8	309035-2-00	3	701051-0-00	14	706454-0-00	1	729013-2-00	4-9	742311-2-00	9	900203-0-10	19-20
308327-0-00	8	309061-4-00	3	702402-0-00	2	707241-0-00	13	729024-2-00	17	742623-2-00	1	900204-0-10	20
308335-0-00	8	309077-0-10	3	702406-0-00	4	720411-2-00	3	729032-2-00	1	742811-0-00	4	900918-0-00	19-20
308357-4-00	6	309084-0-00	3	703003-0-00	14	720431-2-00	16	729033-2-00	11	742813-0-00	4	900920-0-00	19-20
308380-2-01	6	309086-0-01	3	703005-0-00	9-21	720464-0-00	19-20	729034-2-00	13-24	743541-2-00	19-20	900925-4-01	19-20
308412-2-00	10	309088-0-00	3	703810-0-00	10	720505-4-00	19-20	729044-2-00	5	744040-2-00	8	900926-0-00	19-20
308462-0-00	3	309133-3-00	3	703814-0-00	7	720545-4-00	19-20	729054-2-00	17-21	744634-0-00	16	900927-0-00	19-20
308495-2-00	13	309150-4-00	3	704009-0-00	19-20	720546-0-00	20	729434-2-00	8	744636-2-00	3	900928-0-00	19-20
308501-0-01	13	309260-0-00	16	704011-0-00	16	721411-0-00	7	729884-2-00	13	744676-2-00	8-13	900929-0-01	19-20
308502-0-00	13	309274-4-00	16	704104-2-00	16	721412-2-00	11-16	730011-2-00	15	744730-0-00	3	900931-0-00	19-20
308503-0-01	13	309277-0-00	3	704206-2-00	16	721424-2-00	7-15	730033-2-00	9	745001-0-00	9	901101-0-00	19-20
308504-0-00	13	309303-2-00	3	704210-4-00	2-9-16	721434-2-00	14	730054-2-00	5-11	745126-2-00	13	901102-0-00	19-20
308505-0-00	13	309323-0-00	3	704226-2-00	16	721435-2-00	16	731107-2-00	17-21	745136-2-00	4	901251-2-00	20
308506-0-00	13	309324-2-00	3	704236-2-00	7	721444-2-00	1-2	731263-0-00	17	745481-0-20	16	901253-0-00	20
308507-0-00	13	309340-2-00	3	704240-2-00	13	721464-2-00	14	731295-0-00	17	745800-2-00	7-9	925433-0-00	21
308512-0-00	13	309351-0-00	3	704306-0-00	3-4	721475-2-00	3	733008-2-00	19	745812-2-00	5-7-9-12	930067-0-10	14
308518-4-00	13	309371-0-00	3	704309-4-00	8	721484-2-00	3	733507-0-00	15	745815-2-00	4-5-8	930094-0-10	17
308521-4-00	13	309372-0-00	3	704310-2-00	19-20	721485-2-00	1	733507-2-00	3	745827-2-00	6-10	930096-0-10	17
308527-4-00	13	309389-0-00	16	704316-2-00	19-20	721494-2-00	10	733508-4-00	19-20-21	746002-2-00	16	930105-0-10	17
308580-2-01	14	309390-4-00	16	704345-2-00	19-20	721514-0-00	15	733510-4-00	19-20	746008-0-00	9	930272-0-10	17
308594-4-02	14	309391-4-00	16	704346-2-00	19-20	722411-2-00	4	733813-0-00	19-20	746021-2-00	4	930281-0-11	17
308612-3-00	1	309560-0-00	4	704347-0-00	4	722422-2-00	9	740240-0-00	14	746204-0-00	13	930358-2-10	17
308714-3-00	6	309703-4-00	6	704409-0-00	4	722430-2-00	7	740444-2-00	10	746408-2-00	5-9	930359-4-10	17
308731-3-00	8	309830-2-00	9	704708-0-00	16	722431-2-00	21	740632-2-00	7-10-13	746409-2-00	19-20	930427-3-10	17
308732-4-00	8	309831-2-00	9	704805-0-00	12	722432-2-00	11	740636-2-00	13	746612-2-00	6	930432-0-10	17
308733-0-00	1	309838-2-00	4	704218-2-00	12	722442-2-00	7	741056-0-00	5	778203-0-00	9	930442-0-10	17
308735-2-00	4	309839-2-00	4	704813-0-00	15	722443-2-00	11	741082-2-00	15	778208-0-00	7	930443-4-10	17

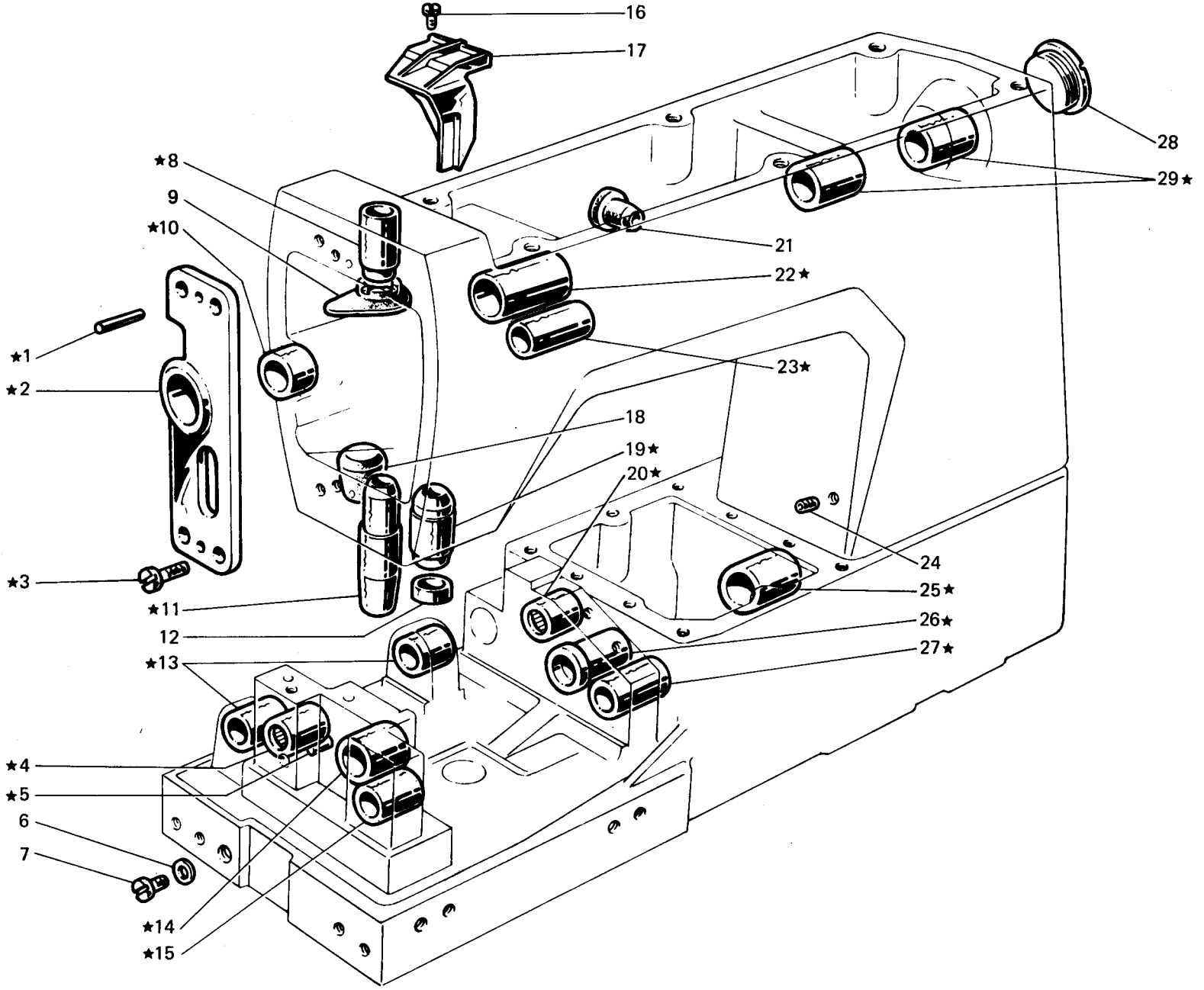


Fig. N. Abb. N.	Part. N. Bestell N. Piece N. Pieza N.	Qt. Anzahl	DESCRIZIONE	DESCRIPTION	DESCRIPTION	BENENNUNG	DESCRIPCION
★	308612-3-00	1	base e braccio con bussole	base and arm with bushes	base et bras avec bagues		
1	706454-0-00	2	spina	pin	goupille		
2	308859-2-00	1	supporto con bussola fig. 10	support with bush fig. 10	support avec bague fig. 10		
3	721485-2-00	4	vite	screw	vis		
4	307664-0-00	1	boccola a rullini	bearing	roulements		
5	706285-0-00	1	spina	pin	goupille		
6	308096-0-00	1	guarnizione sinistra base	left gasket for base	garniture gauche pour base		
7	742623-2-00	1	vite	screw	vis		
8	308032-0-00	1	bussola	bush	bague		
9	308215-0-00	1	protezione olio	oil protection	protection huile		
10	308858-0-00	1	bussola	bush	bague		
11	308737-0-00	1	bussola	bush	bague		
12	308218-0-00	1	scodellino inferiore	lower cup	cuvette inférieure		
13	308296-0-00	2	bussola	bush	bague		
14	308293-0-01	1	bussola	bush	bague		
15	308733-0-00	1	bussola	bush	bague		
16	721444-2-00	1	vite	screw	vis		
17	308138-0-11	1	carter paraolio	oil retainer cover	carter protection huile		
18	308094-0-00	1	tappo foro bussola	plug	bouchon		
19	308031-0-00	1	bussola	bush	bague		
20	307739-0-00	1	boccola a rullini	bearing	roulements		
21	303501-0-10	1	tappo per foro tendifilo	plug	bouchon		
22	308852-0-00	1	bussola	bush	bague		
23	308232-0-00	1	bussola	bush	bague		
24	729032-2-00	1	vite	screw	vis		
25	308086-0-00	1	bussola	bush	bague		
26	308009-0-00	1	bussola	bush	bague		
27	304144-0-10	1	bussola	bush	bague		
28	302356-0-10	1	tappo	plug	bouchon		
29	308853-0-00	2	bussola	bush	bague		

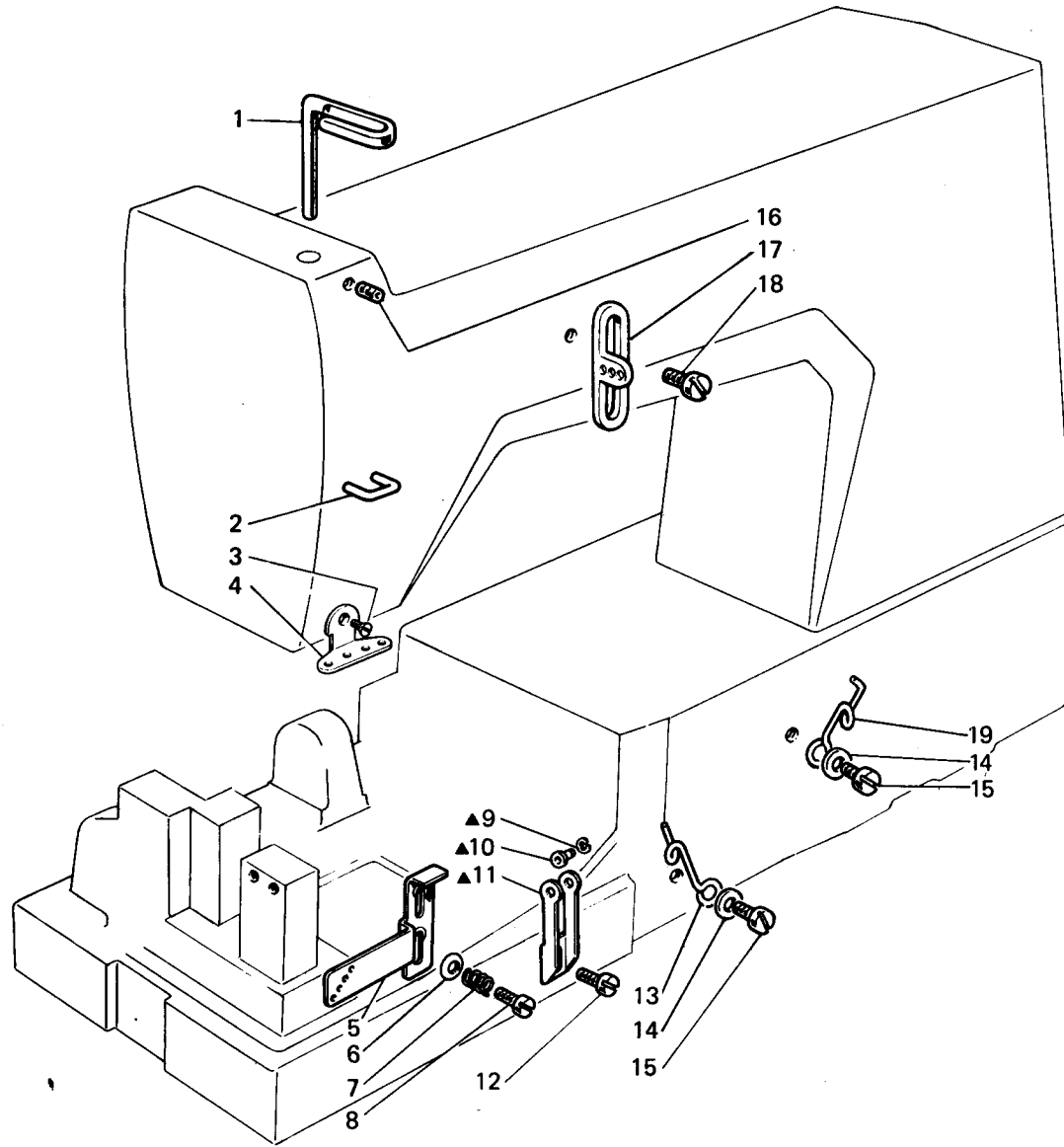


Fig. N. Abb. N.	Part. N. Bestell N. Piece N. Pieza N.	Qt. Anzahl	DESCRIZIONE	DESCRIPTION	DESCRIPTION	BENENNUNG	DESCRIPCION
▲	304242-4-10	1	passafilo completo	thread guide assembly	passe-fil compl.		
1	302136-0-11	1	passafilo	thread guide	passe-fil		
2	308137-0-00	1	cavallotto	coupling	cavalier		
3	724420-2-00	1	vite	screw	vis		
4	308834-0-00	1	passafilo	thread guide	passe-fil		
5	304188-0-10	1	guidafilo	thread guide	guide-fil		
6	702402-0-00	2	molla a tazza	cup spring	ressort à tasse		
7	304249-0-10	2	molla	spring	ressort		
8	304330-0-10	2	vite	scrèw	vis		
9	300429-0-10	2	anello elastico	spring ring	anneau ressort		
10	300428-0-10	2	bussola	bush	bague		
11	304241-0-10	1	passafilo	thread guide	passe-fil		
12	721444-2-00	1	vite	screw	vis		
13	304248-0-10	1	passafilo	thread guide	passe-fil		
14	704210-4-00	2	rondella	washer	rondelle		
15	300483-0-10	2	vite	screw	vis		
16	729011-2-00	1	vite	screw	vis		
17	308203-0-01	2	guidafilo	thread guide	guide-fil		
18	303045-0-10	2	vite	screw	vis		
19	311098-0-00	1	passafilo	thread guide	passe-fil		

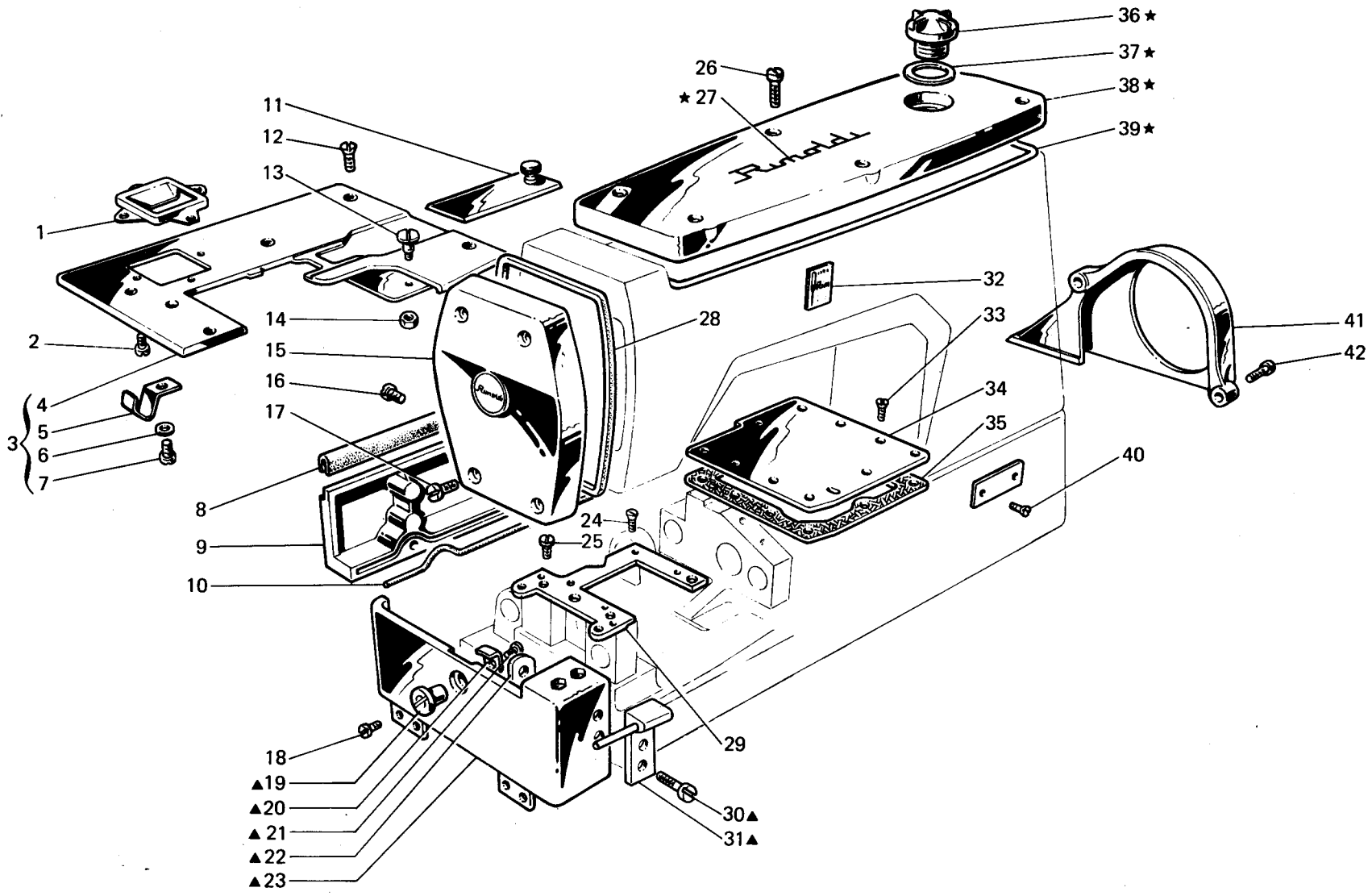


Fig. N. Abb. N.	Part. N. Bestell N. Piece N. Pieza N.	Qt. Anzahl	DESCRIZIONE	DESCRIPTION	DESCRIPTION	BENENNUNG	DESCRIPCION
▲	309150-4-00	1	carter laterale completo	side cover assembly	carter latéral complet		
★	308103-4-10	1	coperchio sup. completo	upper cover assembly	couvercle sup. complet		
1	309077-0-10	1	carterino	cover	carter		
2	741520-2-00	4	vite	screw	vis		
3	309061-4-00	1	piano di lavoro completo	working plate assembly	plan de travail complet		
4	309035-2-00	1	piano di lavoro	working plate	plan de travail		
5	309351-0-00	1	molla	spring	ressort		
6	704306-0-00	1	rondella	washer	rondelle		
7	720411-2-00	2	vite	screw	vis		
8	309088-0-00	1	guarnizione	gasket	garniture		
9	309086-0-01	1	carter posteriore	rear cover	carter arrière		
10	309084-0-00	1	guarnizione	gasket	garniture		
11	309303-2-00	1	coperchio scorrevole	sliding cover	couvercle coulissant		
12	744636-2-00	5	vite	screw	vis		
13	309277-0-00	1	vite	screw	vis		
14	733507-2-00	1	dado	nut	écrou		
15	308101-2-00	1	coperchio laterale	side cover	couvercle latéral		
16	741088-2-00	3	vite per carter posteriore	screw for rear cover	vis pour carter arrière		
17	302353-0-10	1	vite inferiore	lower screw	vis inférieure		
18	300483-0-10	4	vite per cerniera	screw for hinge	vis pour charnière		
19	309372-0-00	1	perno	pin	pivot		
20	309371-0-00	1	chiavistello	key	clé		
21	741658-2-00	1	vite	screw	vis		
22	303958-0-10	1	piastrina	plate	plaque		
23	309133-3-00	1	carter laterale	side cover	carter latéral		
24	744730-0-00	4	vite per placca ago	screw for needle plate	vis pour plaque aiguille		
25	302355-0-10	3	vite per piastra	screw for plate	vis pour plaque		
26	742282-2-00	6	vite per coperchio	screw for cover	vis pour couvercle		
27	300006-0-11	2	decalcomania	decalcomania	décalcomanie		
28	308128-0-00	1	guarnizione coperchio	cover gasket	garniture couvercle		
29	308738-2-00	1	piastra porta placca	plate	plaque		
30	721484-2-00	2	vite	screw	vis		
31	309340-2-00	1	supporto	support	support		
32	788120-0-01	1	decalcomania sistema aghi	needles decalcomania	décalcomanie syst. aiguille		
33	724442-2-00	10	vite per piastra	screw for plate	vis pour plaque		
34	309324-2-00	1	piastra superiore	upper plate	plaque supérieure		
35	309323-0-00	1	guarnizione	gasket	garniture		
36	202239-0-10	1	cupolina	cup	cupole		
37	705970-0-00	1	guarnizione per cupolina	gasket	garniture		
38	308102-0-10	1	coperchio superiore	upper cover	couvercle supérieur		
39	308129-0-00	1	guarnizione per coperchio	gasket for cover	garniture pour couvercle		
40	202165-0-10	2	vite per targhetta	screw for plate	vis pour plaquette		
41	308462-0-00	1	copricinghia per volante Ø 85	belt cover for handwheel Ø 85	couvre-courroie pour volant Ø 85		
42	721475-2-00	2	vite	screw	vis		

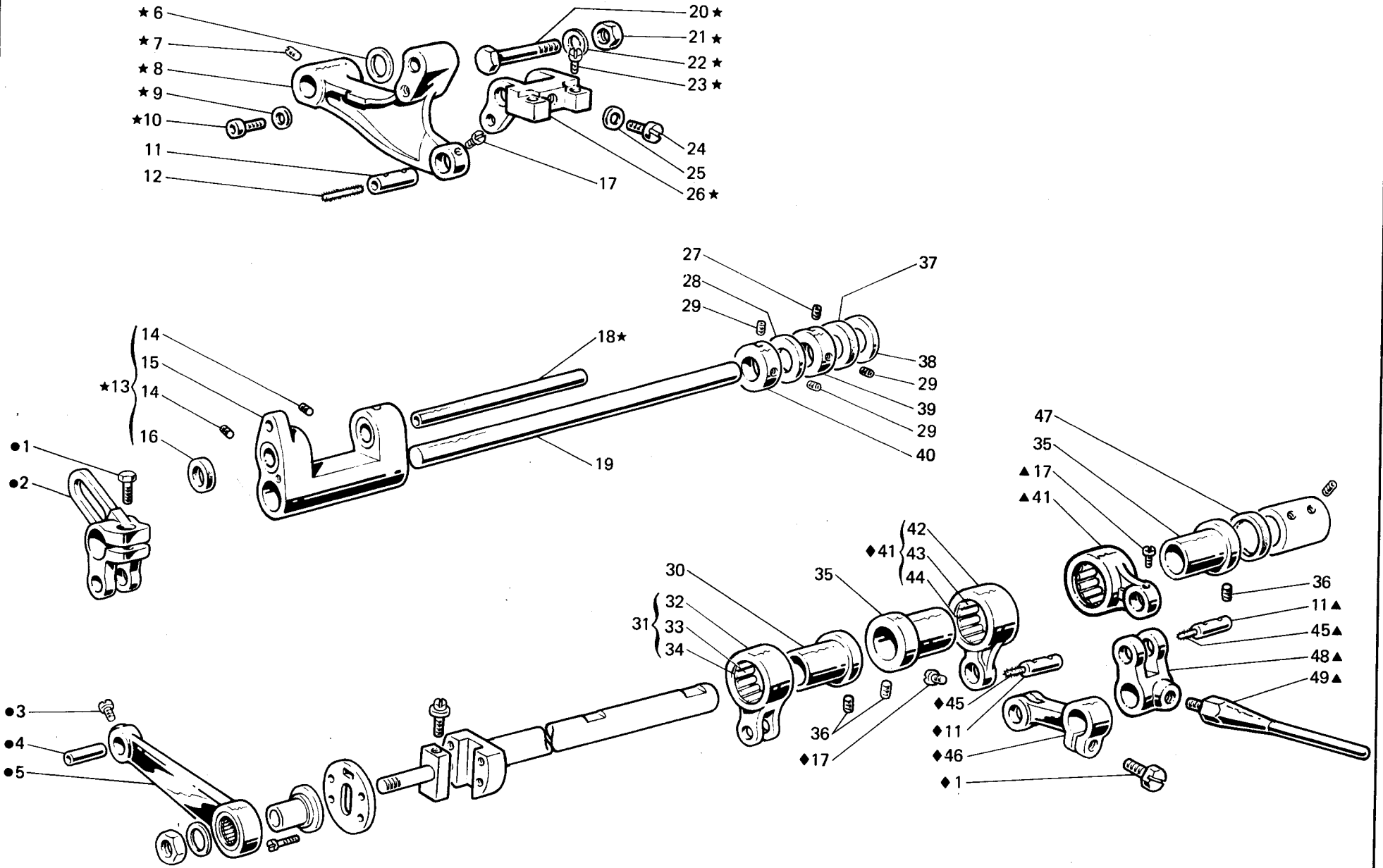
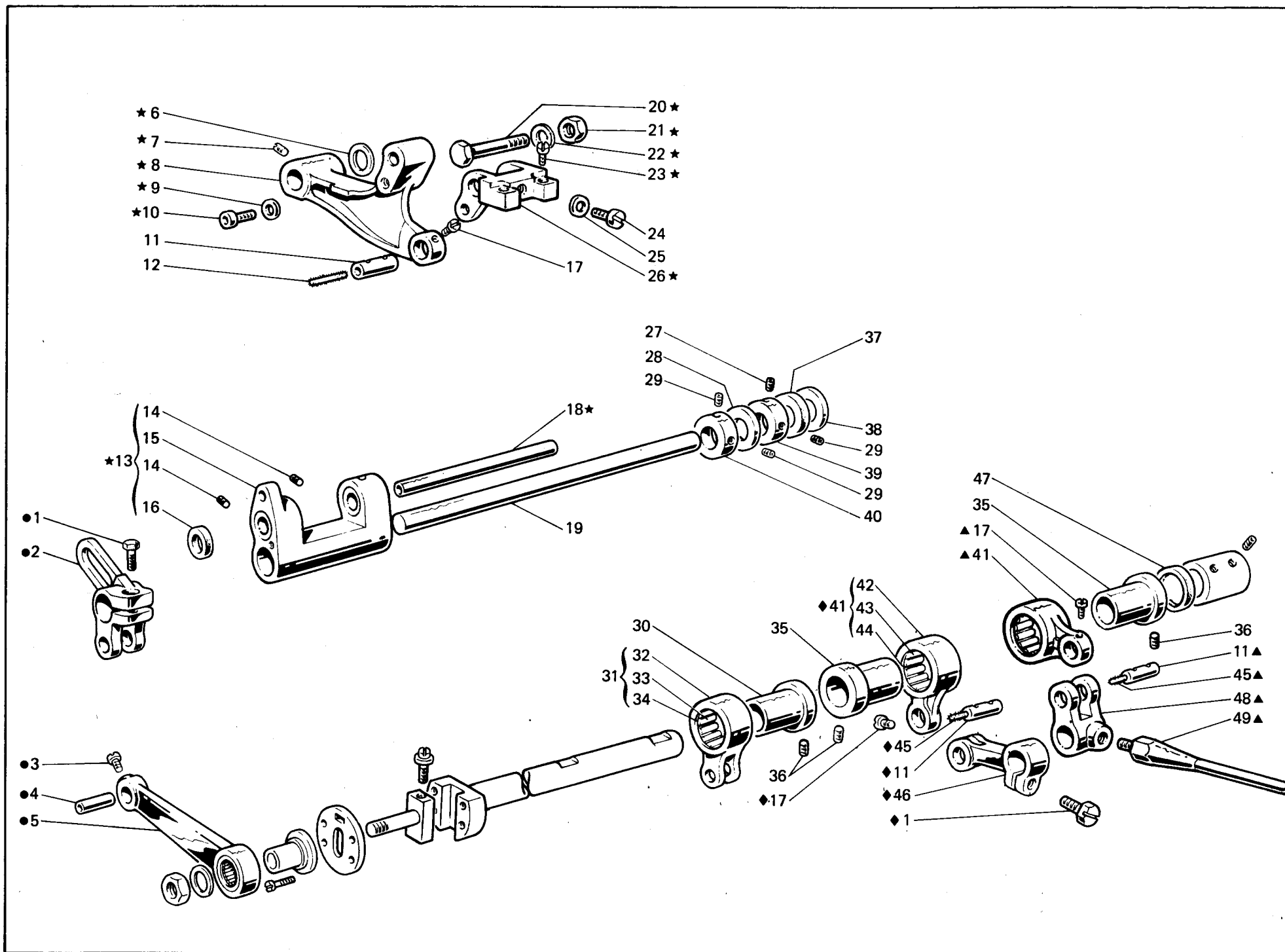


Fig. N. Abb. N.	Part. N. Bestell N. Piece N. Pieza N.	Qt. Anzahl	DESCRIZIONE	DESCRIPTION	DESCRIPTION	BENENNUNG	DESCRIPCION
—	307748-5-00	1	gruppo porta griffa compl. (con fig. ★-11-12-17-30-31-36)	feed dog holder assembly (with fig. ★-11-12-17-30-31-36)	groupe porte griffe (avec fig. ★-11-12-17-30-31-36)		
★	307747-4-00	1	gruppo porta griffa	feed dog holder group	groupe porte griffe		
●	307645-4-00	1	gruppo leva	lever group	groupe levier		
◆	304256-4-10	1	gruppo comando crochet	looper control assembly	groupe commande crochet		
▲	304262-4-10	1	gruppo comando tendifilo	thread take-up assembly	groupe tendeur du fil		
1	202486-0-10	2	vite	screw	vis		
2	307662-2-00	1	leva	lever	levier		
3	742813-0-00	1	vite	screw	vis		
4	308285-0-00	1	perno	pin	pivot		
5	308283-2-00	1	biella	con-rod	bielle		
6	309560-0-00	2	rondella	washer	rondelle		
7	745815-2-00	1	vite	screw	vis		
8	307740-0-00	1	supporto	support	support		
9	704306-0-00	1	rondella	washer	rondelle		
10	722411-2-00	1	vite	screw	vis		
11	300209-0-10	3	perno	pin	pivot		
12	778238-0-00	1	stoppino	wick	mèche		
13	308191-4-00	1	supporto oscillante completo	oscillating support assembly	support coulissant complet		
14	729013-2-00	2	vite	screw	vis		
15	308193-2-00	1	supporto con viti	support with screws	support avec vis		
16	308190-0-00	2	anello di tenuta	retainer ring	bague d'étanchéité		
17	742811-0-00	3	vite	screw	vis		
18	308195-0-00	1	perno	pin	pivot		
19	308735-2-00	1	perno per supporto oscillante	pin for oscillating support	pivot pour support coulissant		
20	307749-0-00	1	perno	pin	pivot		
21	746021-2-00	1	dado	nut	écrou		
22	702406-0-00	1	rondella	washer	rondelle		
23	304332-0-10	2	vite	screw	vis		
24	302355-0-10	1	vite	screw	vis		
25	704409-0-00	1	rondella	washer	rondelle		
26	307741-0-00	1	attacco griffa	feed dog attachment	raccord griffe		
27	728232-0-00	1	vite	screw	vis		
28	704846-0-00	1	rondella	washer	rondelle		
29	745136-2-00	3	vite	screw	vis		
30	308028-2-00	1	eccentrico con vite fig. 36	eccentric with screw fig. 36	excentrique avec vis fig. 36		
31	301459-4-10	1	giunto compl. per eccentrico	joint assembly for eccentric	joint compl. pour excentrique		
32	301458-0-10	1	giunto	joint	joint		
33	301579-0-10	1	gabbia a rullini	needles cage	cage à aiguilles		
34	201143-0-10	2	anello di tenuta	retainer ring	bague d'étanchéité		
35	308736-2-00	2	eccentrico con vite fig. 36	eccentric with screw fig. 36	excentrique avec vis fig. 36		
36	727834-2-00	6	vite	screw	vis		
37	308287-0-00	1	anello di tenuta	retainer ring	bague d'étanchéité		
38	704347-0-00	1	rondella	washer	rondelle		
39	309839-2-00	1	anello di registro	adjustment ring	bague de réglage		
40	309838-2-00	1	anello di registro	adjustment ring	bague de réglage		
41	304254-3-10	2	giunto completo	joint assembly	joint compl.		
42	304253-0-10	2	giunto	joint	joint		
43	302856-0-10	2	gabbia a rullini	needles cage	cage à aiguilles		



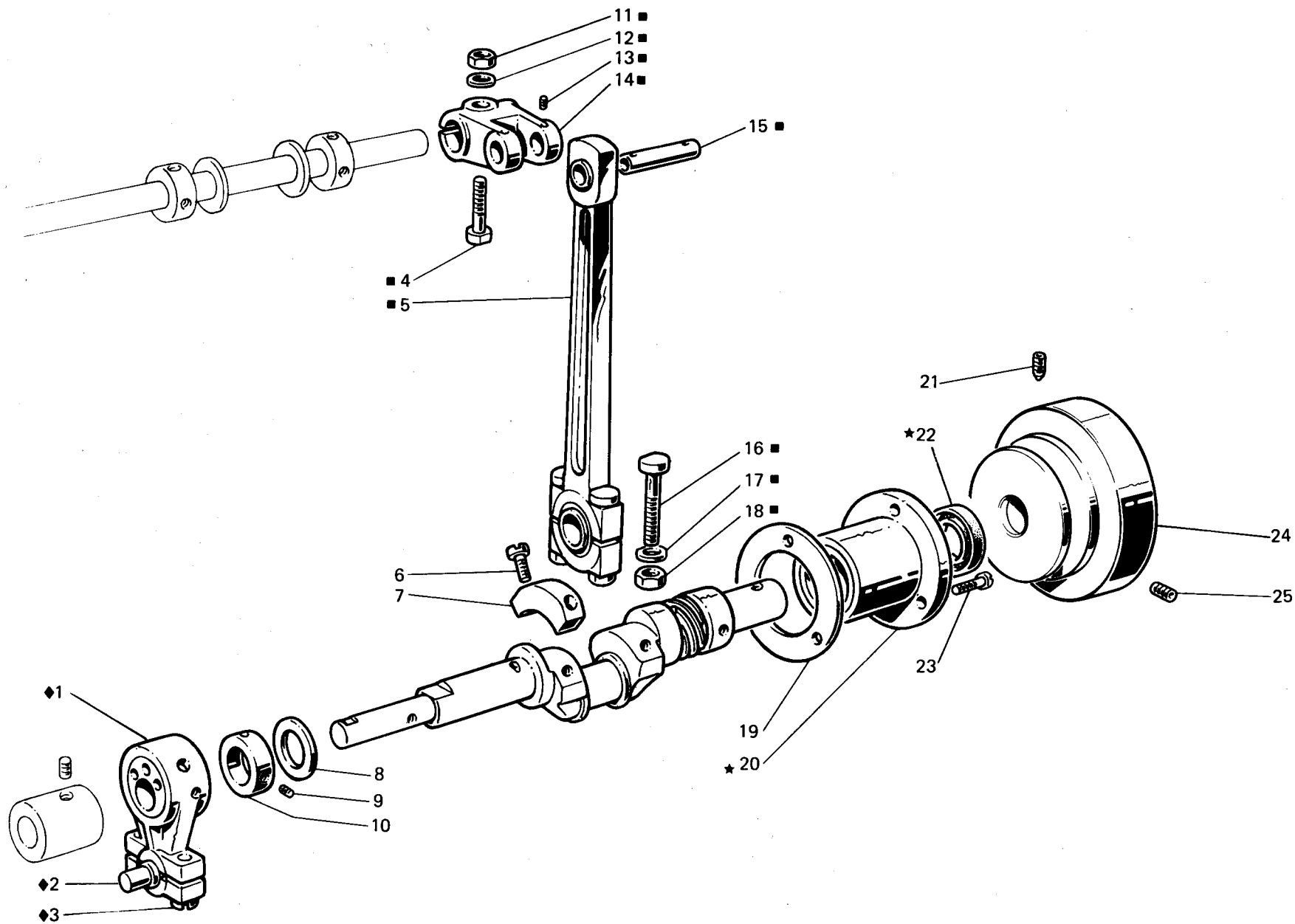


Fig. N. Abb. N.	Part. N. Bestell N. Piecce N. Pieza N.	Qt. Anzahl	DESCRIZIONE	DESCRIPTION	DESCRIPTION	BENENNUNG	DESCRIPCION
◆	310356-4-00	1	biella con eccentrico e viti	con-rod and screws	bielle avec excentrique et vis		
★	308013-4-00	1	bussola destra completa	right bush assembly	bague droite complète		
■	308178-4-00	1	gruppo biella principale	main con-rod assembly	groupe bielle principale		
1	308256-3-00	1	biella con eccentrico e viti	con-rod with cam and screws	bielle avec excentrique et vis		
2	308310-0-00	1	perno a sfera	ball joint	pivot à sphère		
3	308802-0-00	2	vite per biella	screw for con-rod	vis pour bielle		
4	308855-0-00	1	vite	screw	vis		
5	308174-3-00	1	biella principale completa	main con-rod assembly	bielle principale complète		
6	741056-0-00	4	vite	screw	vis		
7	302272-0-10	2	settore	sector	secteur		
8	704869-0-00	1	rondella	washer	rondelle		
9	745815-2-00	2	vite	screw	vis		
10	308084-2-00	1	anello di registro con viti	adjustment ring with screws	bague de réglage avec vis		
11	746408-2-00	1	dado	nut	écrou		
12	705013-0-00	1	rondella	washer	rondelle		
13	745812-2-00	2	vite	screw	vis		
14	308159-2-01	1	manovella	crank	manivelle		
15	308166-0-00	1	perno	pin	pivot		
16	308161-0-00	2	vite	screw	vis		
17	308149-0-01	2	rondella	washer	rondelle		
18	308162-0-00	2	dado	nut	écrou		
19	308127-0-00	1	guarnizione	gasket	garniture		
20	308012-2-00	1	bussola	bush	bague		
21	730054-2-00	1	vite per volantino	screw for pulley	vis pour volant		
22	700596-0-00	1	anello di tenuta	retainer ring	bague d'étanchéité		
23	742222-2-00	3	vite	screw	vis		
24	308090-0-00	1	volantino	handwheel	volant		
25	729044-2-00	1	vite	screw	vis		

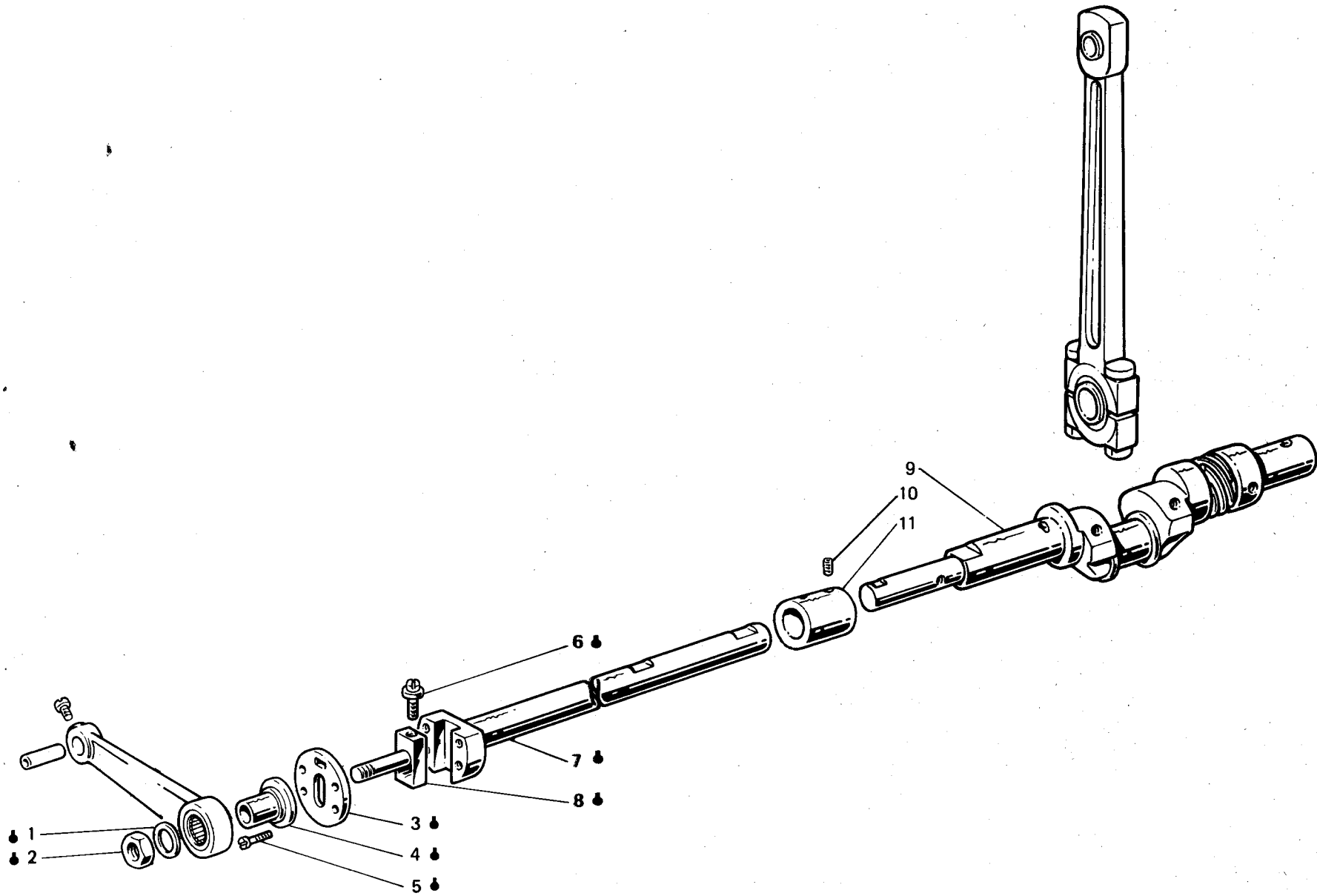


Fig. N. Abb. N.	Part. N. Bestell N. Piece N. Pieza N.	Qt. Anzahl	DESCRIZIONE	DESCRIPTION	DESCRIPTION	BENENNUNG	DESCRIPCION
—	309703 4-00	1	albero inferiore completo	lower shaft assembly	arbre inférieur complet		
●	308357 4-00	1	semialbero inferiore completo	lower half-shaft assembly	semi-arbre inférieur complet		
1	704814 0-00	1	rondella	washer	rondelle		
2	746612-2-00	1	dado	nut	écrou		
3	308280-0-00	1	piastra disco	disc plate	plaque		
4	303458-0-12	1	bussola	bush	bague		
5	724441-0-00	4	vite	screw	vis		
6	308281-0-00	1	vite di registro	adjustment screw	vis de réglage		
7	308380-2-01	1	semialbero inf. sinistro	left lower half-shaft	semi-arbre inférieur gauche		
8	308278-0-00	1	perno	pin	pivot		
9	308714-3-00	1	semialbero inferiore destro	right lower half-shaft	semi-arbre inférieur droite		
10	745827-2-00	4	vite per manicotto	screw	vis		
11	308015-0-00	1	manicotto	coupling	manchon		

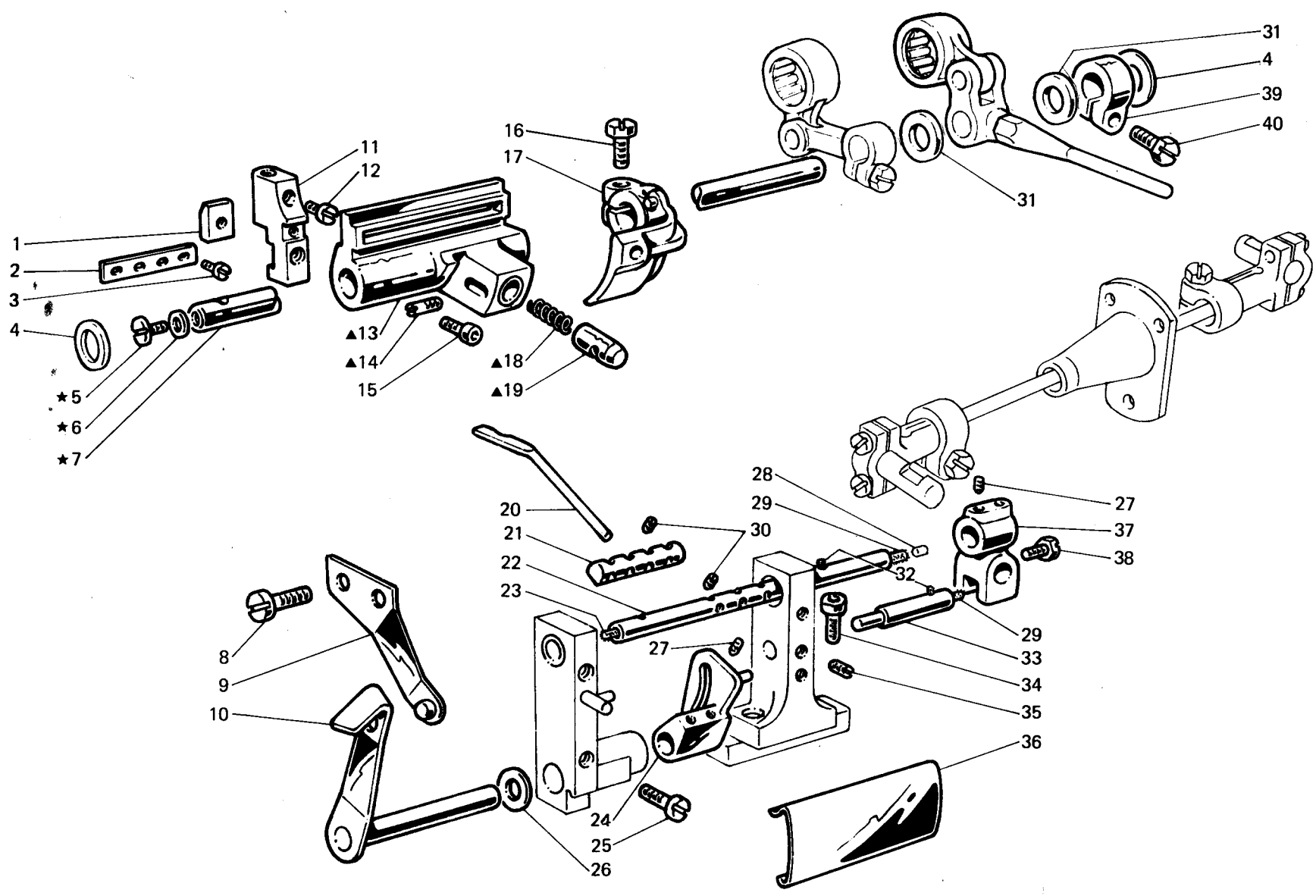


Fig. N. Abb. N.	Part. N. Bestell N. Piece N. Pieza N.	Qt. Anzahl	DESCRIZIONE	DESCRIPTION	DESCRIPTION	BENENNUNG	DESCRIPCION
▲	304167-4-20	1	gruppo supporto crochet inf.	lower looper support assembly	groupe support crochet inf.		
★	308747-4-00	1	contralbero completo	countershaft assembly	axe compl.		
1	304394-0-00	2	dado	nut	écrou		
2	304175-0-10	1	piastrina	plate	plaque		
3	721411-0-00	2	vite	screw	vis		
4	704846-0-00	2	rondella	washer	rondelle		
5	742214-2-00	1	vite	screw	vis		
6	705734-0-00	1	guarnizione	gasket	garniture		
7	308746-0-01	1	contralbero	countershaft	axe		
8	721424-2-00	2	vite	screw	vis		
9	304287-0-10	1	molla per leva disinnesto	spring for lever	ressort pour levier		
10	304310-2-10	1	leva comando disinnesto	lever	levier		
11	304170-0-20	2	porta crochet	looper holder	porte crochet		
12	741520-2-00	2	vite	screw	vis		
13	304166-2-20	1	supporto	support	support		
14	304153-0-00	1	perno	pin	pivot		
15	722430-2-00	2	vite	screw	vis		
16	202486-0-10	1	vite	screw	vis		
17	304171-0-10	1	attacco com. crochet	looper control attachment	raccord commande crochet		
18	304195-0-10	1	molla	spring	ressort		
19	304172-0-10	1	nottolino	powl	axe		
20	304187-0-11	2	deragliatore	device	déviateur		
21	304192-0-10	1	blocchetto	block	bloc		
22	304182-3-10	1	barra con tappi e stoppini	bar with plug and wick	barre avec bouchon et mèche		
23	778222-0-00	1	stoppino	wick	mèche		
24	304323-2-01	1	supporto com. disinnesto	support	support		
25	722452-2-00	2	vite fissa supporto	support screw	vis blocage support		
26	704236-2-00	1	rondella	washer	rondelle		
27	745812-2-00	4	vite	screw	vis		
28	301586-0-10	2	tappo	plug	bouchon		
29	778225-0-00	2	stoppino	wick	mèche		
30	745800-2-00	4	vite	screw	vis		
31	703814-0-00	2	rondella	washer	rondelle		
32	778208-0-00	3	stoppino	wick	mèche		
33	304197-2-10	1	spina con stoppino	pin with wick	goupille avec mèche		
34	722442-2-00	2	vite fissa supporto	support screw	vis blocage support		
35	727023-0-00	1	vite	screw	vis		
36	304194-0-10	1	carterino	cover	carter		
37	304165-2-00	1	giunto	joint	joint		
38	740632-2-00	1	vite	screw	vis		
39	300469-2-11	1	fascetta con vite	clamp with screw	bride avec vis		
40	300482-0-10	1	vite	screw	vis		

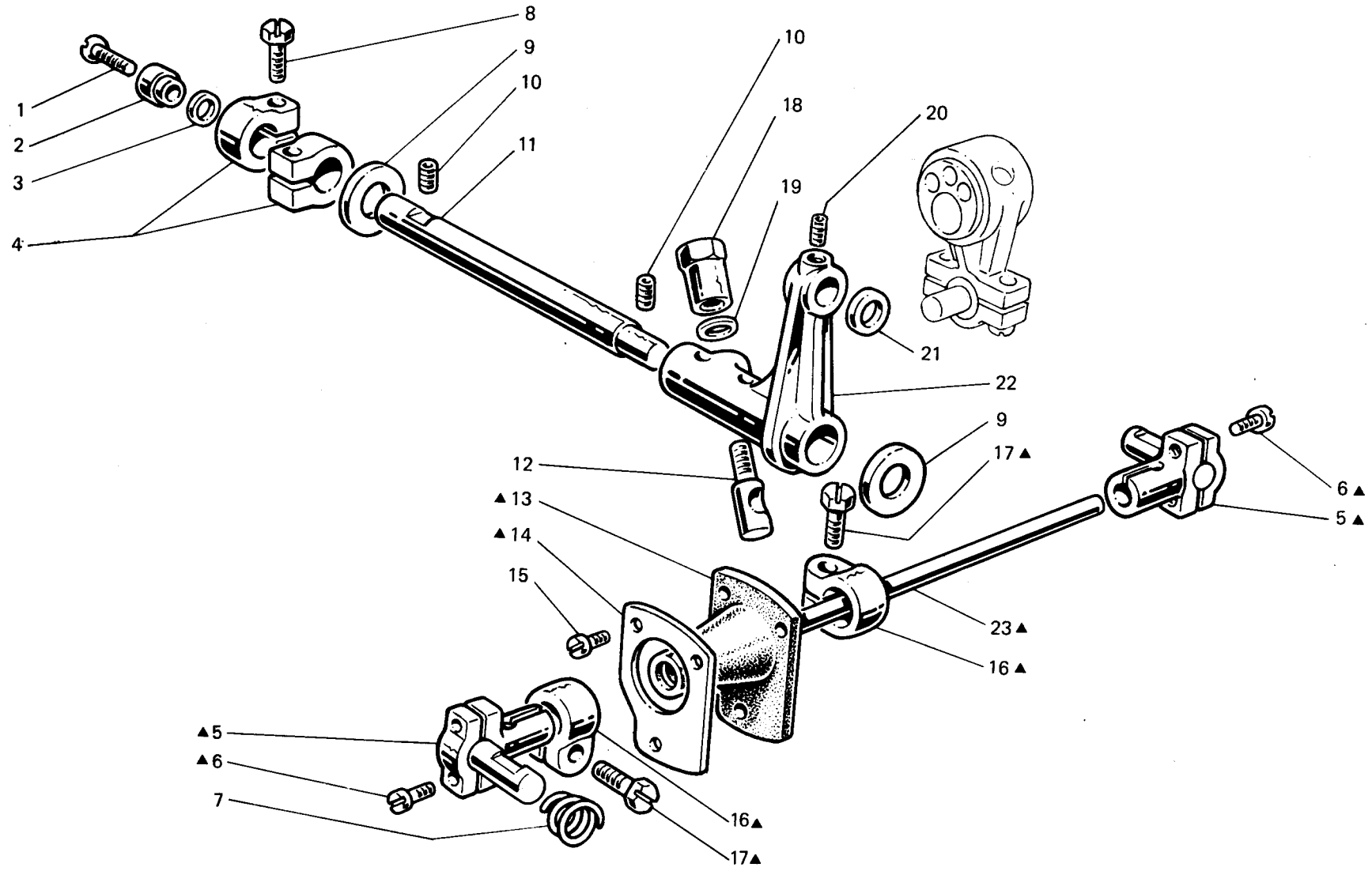


Fig. N. Abb. N.	Part. N. Bestell N. Pieza N.	Qt. Anzahl	DESCRIZIONE	DESCRIPTION	DESCRIPTION	BENENNUNG	DESCRIPCION
▲	308732-4-00	1	gruppo comando crochet inf.	lower looper control assembly	groupe com. crochet inférieur		
1	744676-2-00	1	vite	screw	vis		
2	308047-0-00	1	scodellino	cup	cuvette		
3	701009-0-00	1	anello di tenuta	retainer ring	bague d'étanchéité		
4	308046-2-01	2	fascetta	clamp	bride		
5	305825-3-00	2	testa di biella con viti	con-rod big end with screws	tête de bielle avec vis		
6	744040-2-00	4	vite	screw	vis		
7	302289-0-10	1	molla	spring	ressort		
8	300482-0-10	2	vite	screw	vis		
9	704849-0-00	2	rondella	washer	rondelle		
10	729434-2-00	2	vite fissa perno	screw	vis		
11	308044-0-00	1	perno per supporto	pin	pivot		
12	300352-0-10	1	spina filettata	pin	goupille		
13	308731-3-00	1	manicotto para olio	oil protection	manchon pare huile		
14	308327-0-00	1	mascherina per manicotto	flange	flasque		
15	741675-2-00	3	vite	screw	vis		
16	308326-2-01	2	fascetta per biella con vite	clamp with screw	bride avec vis		
17	305194-0-00	2	vite	screw	vis		
18	300351-0-11	1	dado	nut	écrou		
19	704309-4-00	1	rondella	washer	rondelle		
20	745815-2-00	1	vite	screw	vis		
21	705834-0-00	1	rondella in fibra	washer	rondelle		
22	308045-0-01	1	supporto oscillante	oscillating support	support coulissant		
23	308335-0-00	1	tirante per biella	tie-rod	tirant pour bielle		

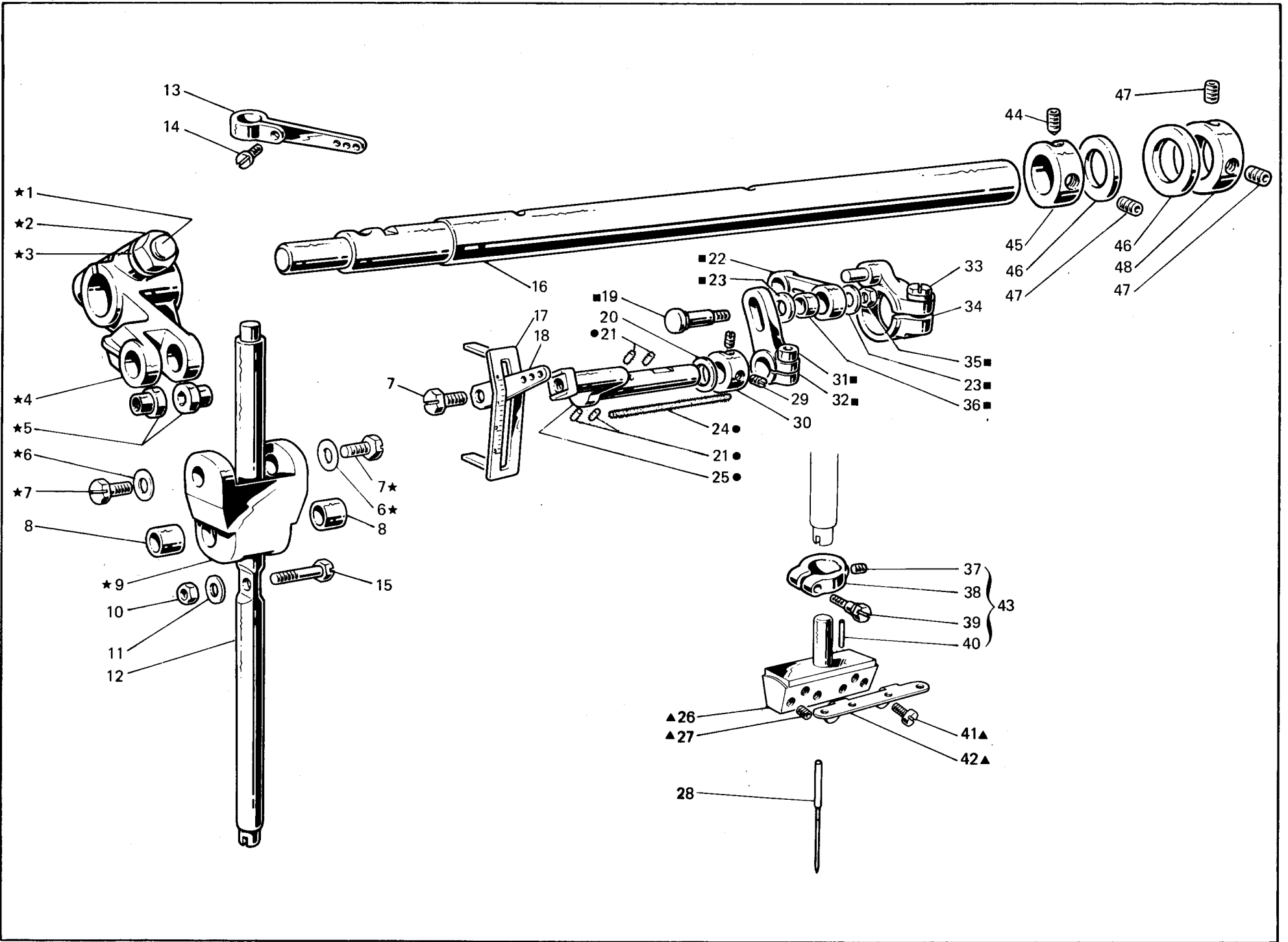


Fig. N. Abb. N.	Part. N. Bestell N. Piece N. Pieza N.	Qt. Anzahl	DESCRIZIONE	DESCRIPTION	DESCRIPTION	BENENNUNG	DESCRIPCION
★	308006-4-00	1	gruppo manov. giunto barra ago	crank and joint assembly			
▲	304136-4-00	1	morsetto porta aghi completo	needles clamp assembly			
■	308244-4-00	1	gruppo settore tenditore articol.	sector assembly			
●	308238-4-00	1	braccio con stoppini	arm with wicks			
1	308855-0-00	1	perno a vite	threaded pin			
2	746408-2-00	1	dado	nut			
3	705013-0-00	1	rondella	washer			
4	308036-2-00	1	manovella completa	crank assembly			
5	308037-0-00	2	perno superiore	upper pin			
6	704210-4-00	2	rondella	washer			
7	308039-0-01	3	vite	screw			
8	308041-0-00	2	bussola inferiore	lower bush			
9	308038-0-10	1	giunto barra ago	needle bar joint			
10	302338-0-10	1	dado	nut			
11	703005-0-00	1	rondella	washer			
12	308220-0-00	1	barra ago	needle bar			
13	308139-2-01	1	tendifilo superiore	upper thread take-up			
14	742311-2-00	1	vite	screw			
15	308042-0-00	1	perno per barra ago	pin for needle bar			
16	308851-2-01	1	albero superiore	upper shaft			
17	308005-0-00	1	targhetta	plate			
18	308239-0-00	1	tendifilo inferiore	lower thread guide			
19	308235-0-00	1	perno	pin			
20	704828-0-00	1	rondella	washer			
21	778203-0-00	4	stoppino	wick			
22	206583-0-00	1	biellino	con-rod			
23	705208-0-00	2	rondella	washer			
24	778407-0-00	1	stoppino	wick			
25	308233-0-00	1	braccio	arm			
26	304149-0-10	1	morsetto porta aghi	needles clamp			
27	745800-2-00	2	vite	screw			
28	960350-0-10	2	ago sist.UY113GS fin.100	needle syst. UY113GS size 100			
29	745812-2-00	2	vite	screw			
30	303899-0-10	1	anello	ring			
31	722422-2-00	1	vite	screw			
32	308234-2-00	1	settore con vite	sector with screw			
33	201128-0-10	1	vite	screw			
34	308236-2-00	1	braccio con vite	arm with screw			
35	746008-0-00	1	dado	nut			
36	202032-0-11	1	bussolina	bush			
37	745001-0-00	1	vite	screw			
38	302591-0-10	1	fascetta per barra ago	clamp for needle bar			
39	302352-0-10	1	vite	screw			
40	302292-0-10	1	spinetta	pin			
41	100458-0-10	2	vite	screw			
42	304246-0-10	1	passafilo	thread guide			
43	302590-4-10	1	fascetta completa	clamp assembly			
44	730033-2-00	1	vite	screw			

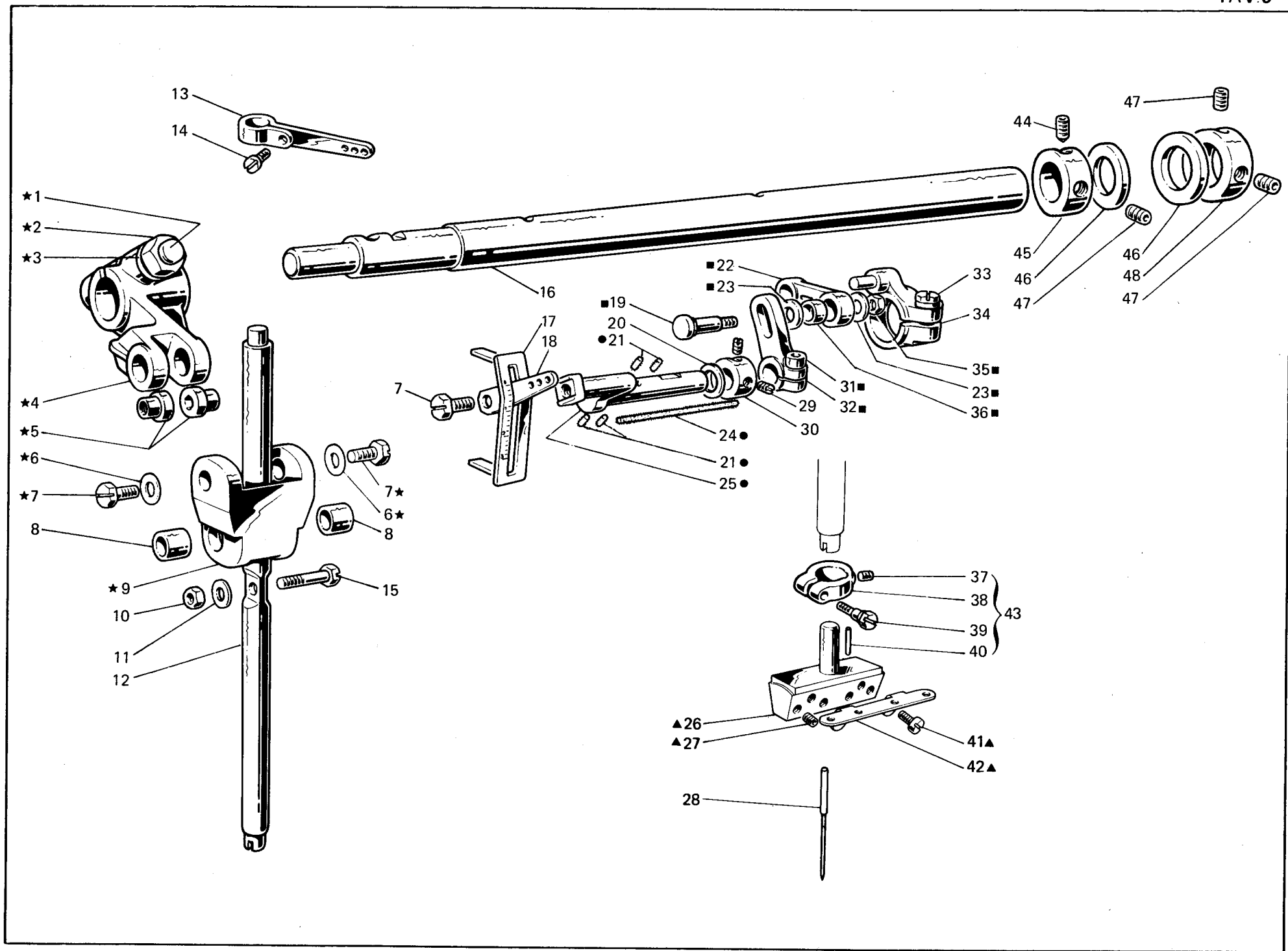


Fig. N. Abb. N.	Part. N. Bestell N. Piece N. Pieza N.	Qt. Anzahl	DESCRIZIONE	DESCRIPTION	DESCRIPTION	BENENNUNG	DESCRIPCION
45	309831-2-00	1	anello di registro con viti	adjustment ring with screws	bague de réglage avec vis		
46	704869-0-00	2	rondella	washer	rondelle		
47	729013-2-00	3	vite	screw	vis		
48	309830-2-00	1	anello di registro con viti	adjustment ring with screws	bague de réglage avec vis		

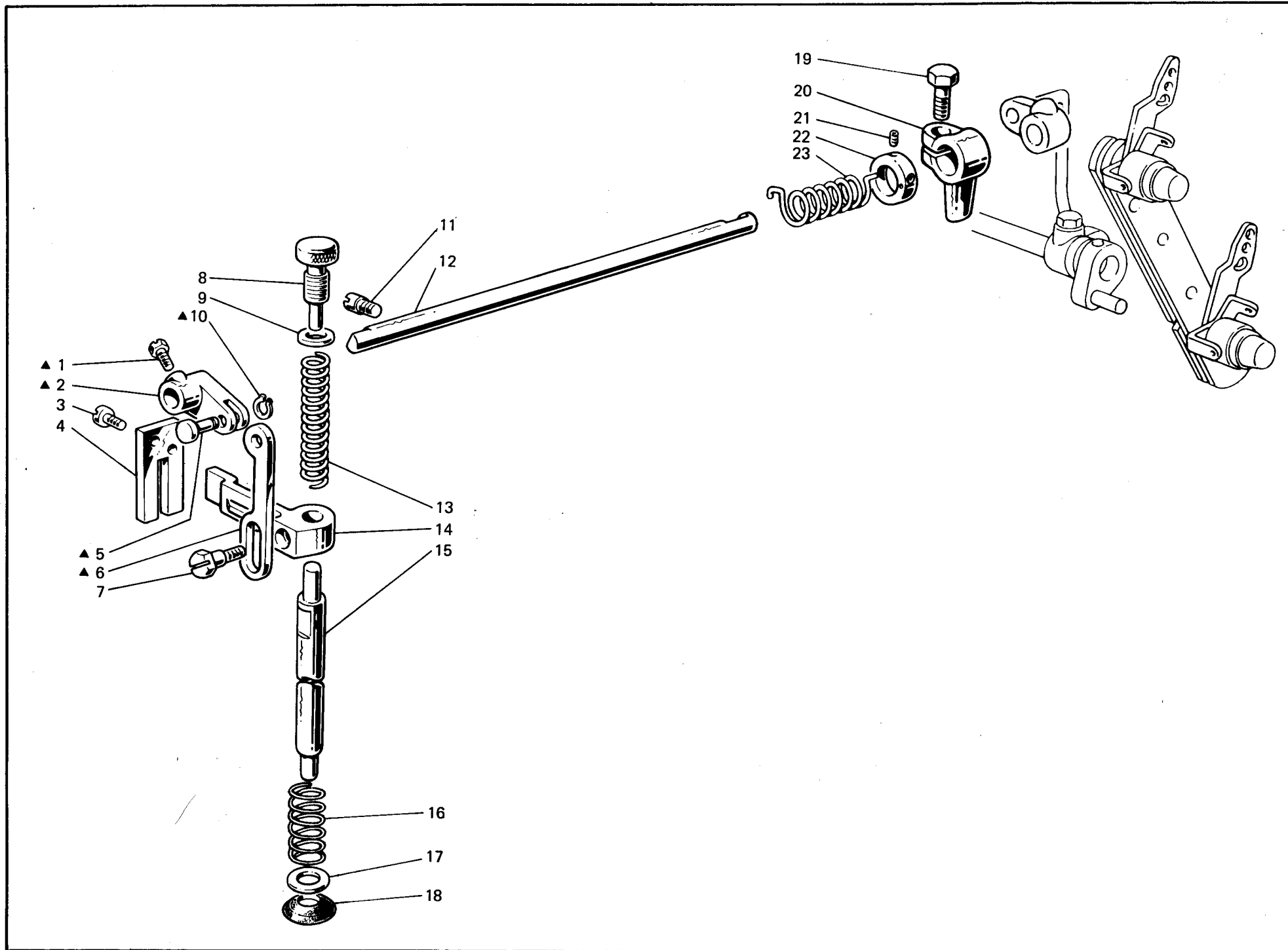


Fig. N. Abb. N.	Part. N. Piecce N. Bestell N. Pieza N.	Qt. Anzahl	DESCRIZIONE	DESCRIPTION	DESCRIPTION	BENENNUNG	DESCRIPCION
▲	308060-4-00	1	gruppo manov.tirante premistoffa	presser crank assembly	groupe maniv. tirant presseur		
1	740632-2-00	1	vite	screw	vis		
2	308059-0-00	1	manovella	crank	manivelle		
3	721494-2-00	2	vite fissa piastra	plate screw	vis blocage plaque		
4	308056-0-00	1	piastra guida barra	plate	plaque		
5	308058-0-00	1	spina	pin	goupille		
6	308057-0-00	1	tirante per alza piedino	presserfoot tie-rod	tirant soulèvement pied de biche		
7	740444-2-00	1	vite fissa slitta	screw	vis blocage glissière		
8	302060-0-11	1	pomolo di regolazione	adjustment knob	pommeau de réglage		
9	302344-0-10	1	rondella	washer	rondelle		
10	700205-0-00	1	anello elastico	spring ring	anneau ressort		
11	308007-0-00	1	perno filettato	threaded pin	pivot fileté		
12	302234-0-10	1	albero	shaft	arbre		
13	302059-0-10	1	molla premi piedino	spring	ressort pied de biche		
14	308055-2-00	1	guida a forcella	forket guide	guide à fourchette		
15	308061-0-01	1	barra porta piedino	presserfoot bar	barre porte-pied de biche		
16	308148-0-00	1	molla	spring	ressort		
17	703810-0-00	1	rondella	washer	rondelle		
18	308054-0-00	1	paraolio	oil retainer	pare-huile		
19	202487-0-10	1	vite	screw	vis		
20	308412-2-00	1	fascetta di fermo con vite	clamp with screw	bride de fixation avec vis		
21	745827-2-00	2	vite	screw	vis		
22	304767-2-10	1	anello per molla	ring	bague		
23	308098-0-00	1	molla di torsione	spring	ressort de torsion		

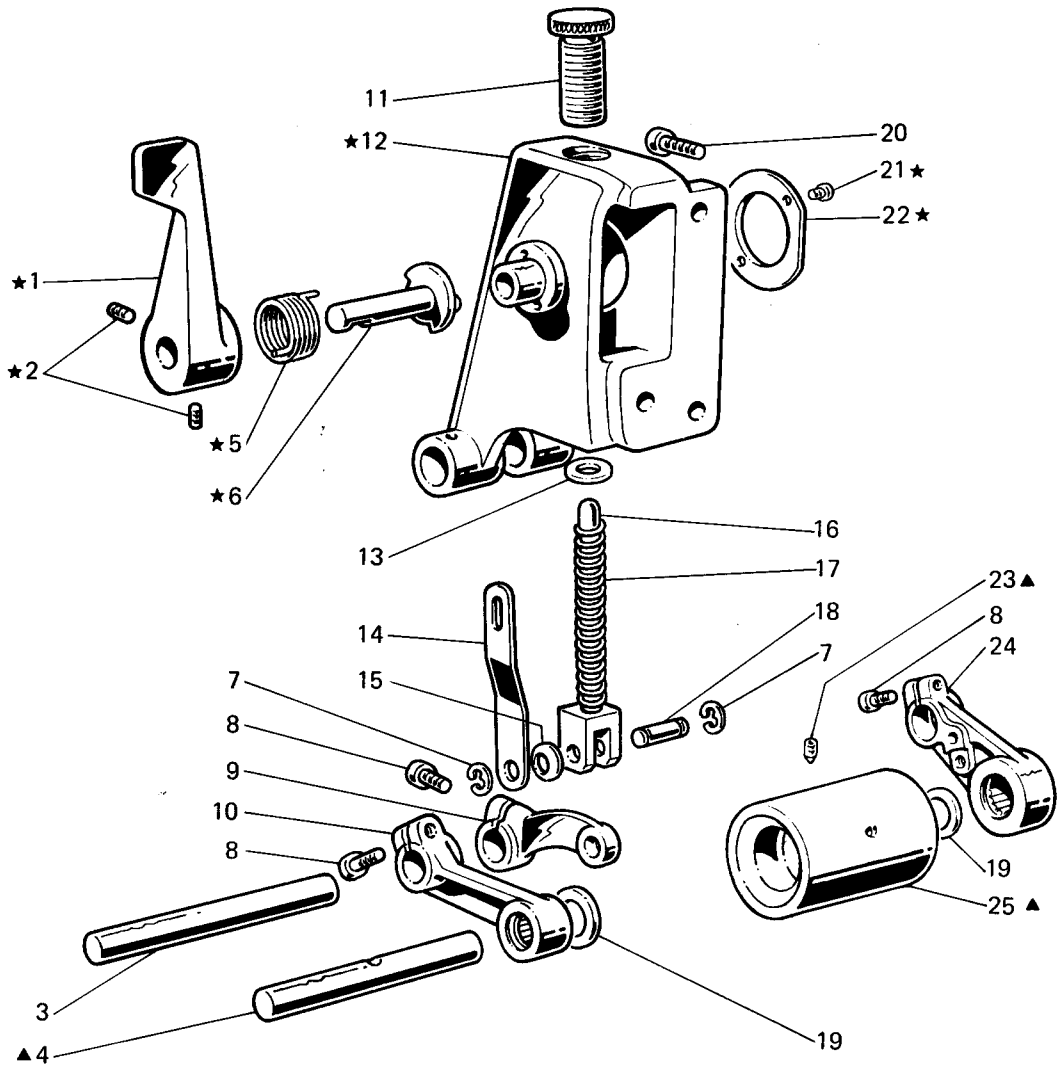


Fig. N. Abb. N.	Part. N. Bestell N. Pieze N. Pieza N.	Ct. Anzahl	DESCRIZIONE	DESCRIPTION	DESCRIPTION	BENENNUNG	DESCRIPCION
★	307594-4-00	1	gruppo supporto rullo sup.	upper support roller assembly	groupe support rouleau supérieur		
▲	310521-4-00	1	gruppo rullo folle sup.	upper roller assembly	groupe rouleau supérieur		
1	307616-2-00	1	maniglia alza rullo	lever	levier		
2	729033-2-00	2	vite	screw	vis		
3	307762-0-00	1	perno superiore	upper pin	pivot supérieur		
4	307619-0-10	1	perno per rullo sup.	shaft	arbre		
5	307701-0-00	1	molla	spring	ressort		
6	307656-0-11	1	perno eccentrico	eccentric pin	pivot excentrique		
7	700206-0-00	2	anello elastico	spring ring	anneau ressort		
8	722432-2-00	3	vite	screw	vis		
9	307612-2-10	1	braccio premi rullo	arm	bras		
10	307761-3-00	1	giunto sinistro	left joint	joint gauche		
11	307705-0-00	1	pomolo	knob	pommeau		
12	307610-2-10	1	supporto	support	support		
13	704814-0-00	1	rondella	washer	rondelle		
14	307615-0-10	1	piastrina	plate	plaque		
15	307605-0-00	1	anello	spring	ressort		
16	307618-0-10	1	forcella	fork	fourche		
17	301510-0-10	1	molla	spring	ressort		
18	307617-0-10	1	spina	pin	goupille		
19	704848-0-00	2	rondella	washer	rondelle		
20	722443-2-00	3	vite	screw	vis		
21	721412-2-00	2	vite	screw	vis		
22	307697-0-00	1	corperchio	cover	couvercle		
23	730054-2-00	1	vite	screw	vis		
24	307652-3-00	1	giunto deatro	right joint	joint droite		
25	307696-2-10	1	rullo	roller	rouleau		

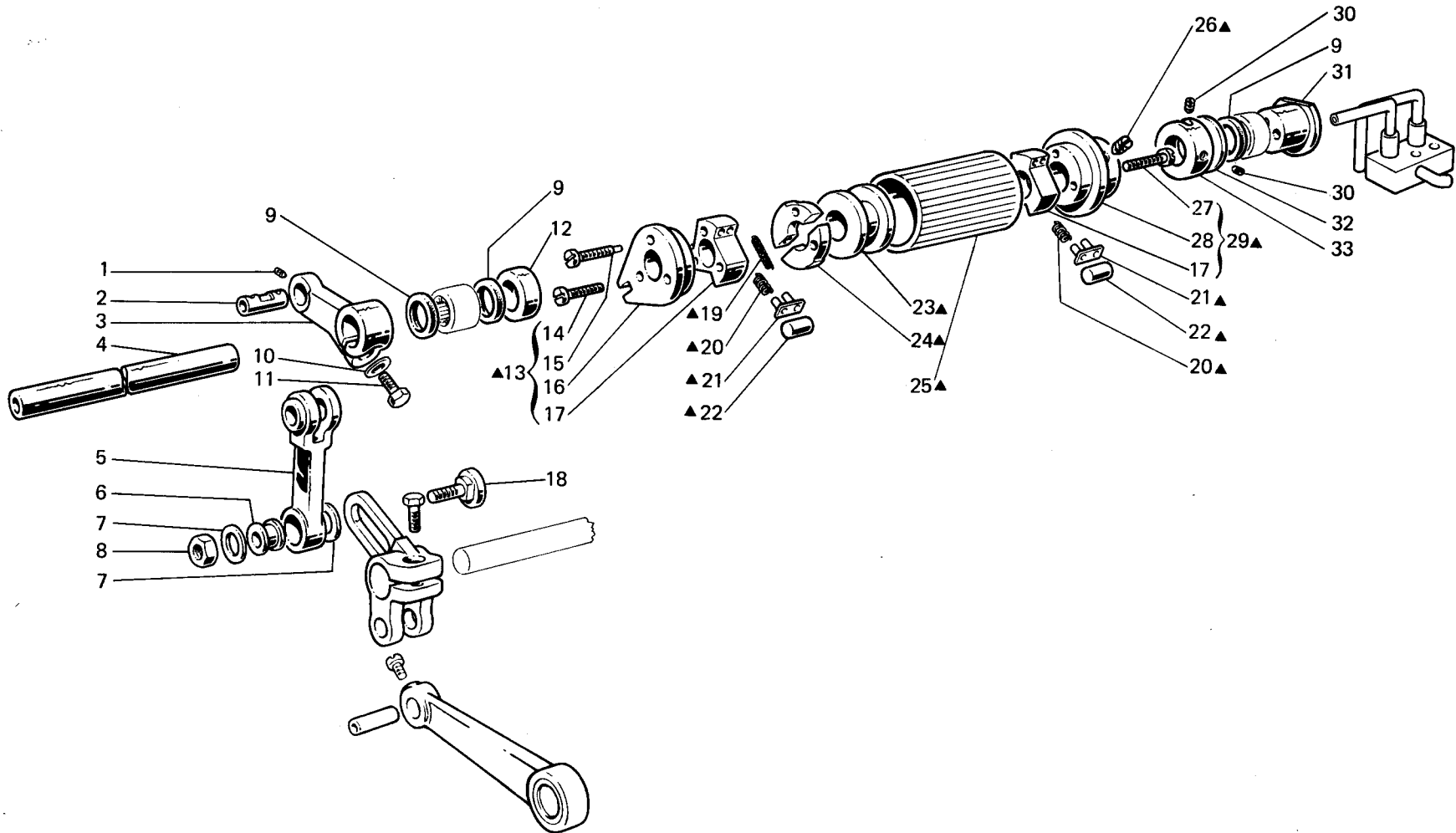


Fig. N. Abb. N.	Part. N. Bestell N. Piece N. Pieza N.	Qt. Anzahl	DESCRIZIONE	DESCRIPTION	DESCRIPTION	BENENNUNG	DESCRIPCION
▲	307738-4-00	1	comando frizione posteriore	rear clutch control	commande friction arrière		
1	727012-0-00	1	vite	screw	vis		
2	307678-2-00	1	perno con stoppino	pin with wick	pivot avec mèche		
3	307603-2-00	1	leva comando rullo	lever	levier		
4	307691-2-00	1	albero porta frizione	shaft	arbre		
5	307712-0-00	1	bielletta	con-rod	bielle		
6	301547-0-11	1	bussola	bush	bague		
7	704805-0-00	2	rondella	washer	rondelle		
8	302708-0-01	1	dado	nut	écrou		
9	307651-0-00	3	anello di tenuta	circlip	circlip		
10	704218-2-00	1	rondella	washer	rondelle		
11	300377-0-10	1	vite	screw	vis		
12	307663-0-00	1	distanziale	spacer	entretoise		
13	301535-4-10	1	flangia sinistra	left flange	flasque gauche		
14	741761-0-00	1	vite	screw	vis		
15	301594-0-10	2	vite	screw	vis		
16	301534-0-10	1	flangia	flange	flasque		
17	301523-0-10	2	settore	sector	secteur		
18	301546-0-10	1	perno a vite	pin	pivot		
19	301539-0-10	1	molla	spring	ressort		
20	301531-0-10	12	molletta	spring	ressort		
21	301530-2-10	6	piastrina	plate	plaque		
22	301527-0-10	6	rullino	roller	rouleau		
23	301540-0-10	1	distanziale	spacer	entretoise		
24	301538-0-10	1	freno	brake	frein		
25	307737-0-00	1	rullo frizione	clutch roller	rouleau friction		
26	727855-0-00	2	vite	screw	vis		
27	301595-0-10	3	vite	screw	vis		
28	301532-0-10	1	flangia	flange	flasque		
29	301533-4-10	1	flangia destra	right flange	flasque droite		
30	745812-2-00	2	vite	screw	vis		
31	307607-0-00	1	raccordo olio	pipe connection	raccord huile		
32	704844-0-00	1	rondella	washer	rondelle		
33	206606-2-00	1	anello di registro	adjustment ring	bague de réglage		
			SOLO A RICHIESTA	ONLY ON REQUEST	SEULEMENT SUR DEMANDE		
▲	300010-4-00	1	comando frizione posteriore	rear clutch control	commande friction arrière		
25	300003-0-10	1	rullo frizione	roller	rouleau		
▲	301633-4-10	1	comando frizione posteriore	rear clutch control	commande friction arrière		
25	301632-0-10	1	rullo frizione	roller	rouleau		

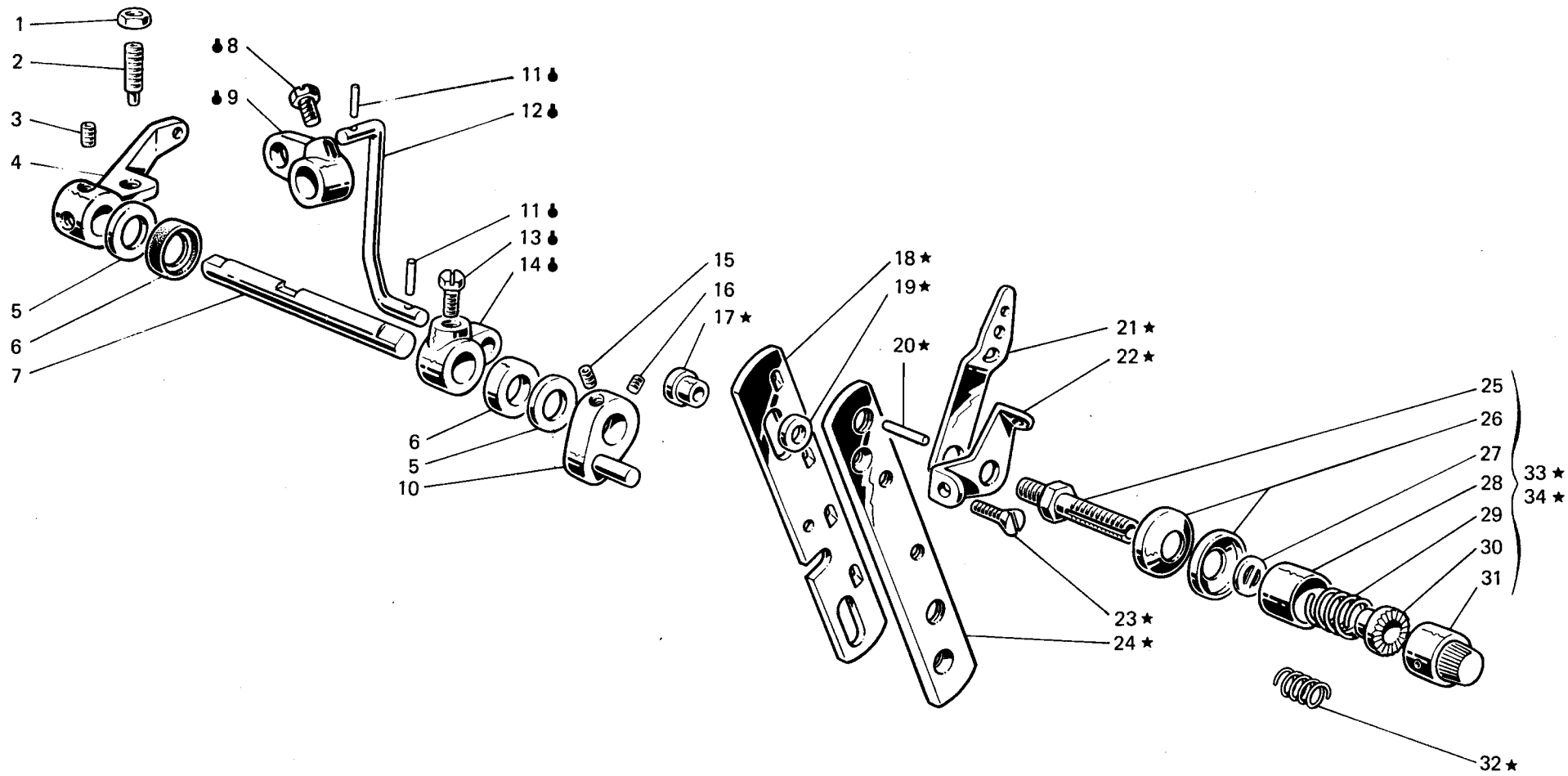


Fig. N. Abb. N.	Part. N. Piecce N. Bestell N. Pieza N.	Qt. Anzahl	DESCRIZIONE	DESCRIPTION	DESCRIPTION	BENENNUNG	DESCRIPCION
★	308527-4-00	1	gruppo tensioni	tension assembly	groupe tensions		
⚙	308320-4-00	1	tirante con leva	tie-rod with lever	tirant avec levier		
1	746204-0-00	1	dado	nut	écrou		
2	729884-2-00	1	vite	screw	vis		
3.	729034-2-00	2	vite per leva	screw for lever	vis pour levier		
4	308062-2-00	1	leva comando alza piedino	presserfoot control lever	levier soulèv. pied de biche		
5	704240-2-00	2	rondella	washer	rondelle		
6	304763-0-10	2	anello di tenuta	retainer ring	bague d'étanchéité		
7	308996-0-01	1	albero comando alza piedino	shaft	arbre soulèv. pied de biche		
8	740632-2-00	1	vite	screw	vis		
9	302232-0-10	1	leva superiore	upper lever	levier supérieur		
10	308495-2-00	1	leva sblocca tensione	lever	levier déblocage tension		
11	707241-0-00	2	spina elastica	split pin	goupille		
12	308321-0-00	1	tirante	tie-rod	tirant		
13	740636-2-00	1	vite per leva	screw	vis pour levier		
14	302238-0-10	1	leva per tirante	tie-rod lever	levier pour tirant		
15	745126-2-00	1	vite	screw	vis		
16	727834-2-00	1	vite	screw	vis		
17	308512-0-00	2	distanziale	spacer	entretoise		
18	308502-0-00	1	slitta per tensione	slide for tension	glissière tension		
19	701007-0-00	2	anello	ring	anneau		
20	308506-0-00	4	pernetto	pin	pivot		
21	308501-0-01	4	passafilo	thread guide	passé-fil		
22	308503-0-01	4	guidafilo	thread guide	guide fil		
23	744676-2-00	2	vite	screw	vis		
24	308504-0-00	1	supporto	support	support		
25	308505-0-00	4	perno a vite	threaded pin	pivot à vis		
26	300218-0-10	8	disco tensione	tension disc	disque tension		
27	308507-0-00	4	rondella	washer	rondelle		
28	202556-0-00	4	scodellino	cup	cuvette		
29	200710-0-10	2	molla	spring	ressort		
30	202229-0-10	4	bussola superiore	upper bush	bague supérieure		
31	202558-2-00	4	pomolo	knob	pommeau		
32	200714-0-10	2	molla	spring	ressort		
33	308518-4-00	2	tensione sup. con molla fig. 29	upper tension with spring fig. 29	tension sup. avec ressort fig. 29		
34	308521-4-00	2	tensione inf. con molla fig. 32	lower tension with spring fig. 32	tension inf. avec ressort fig. 32		

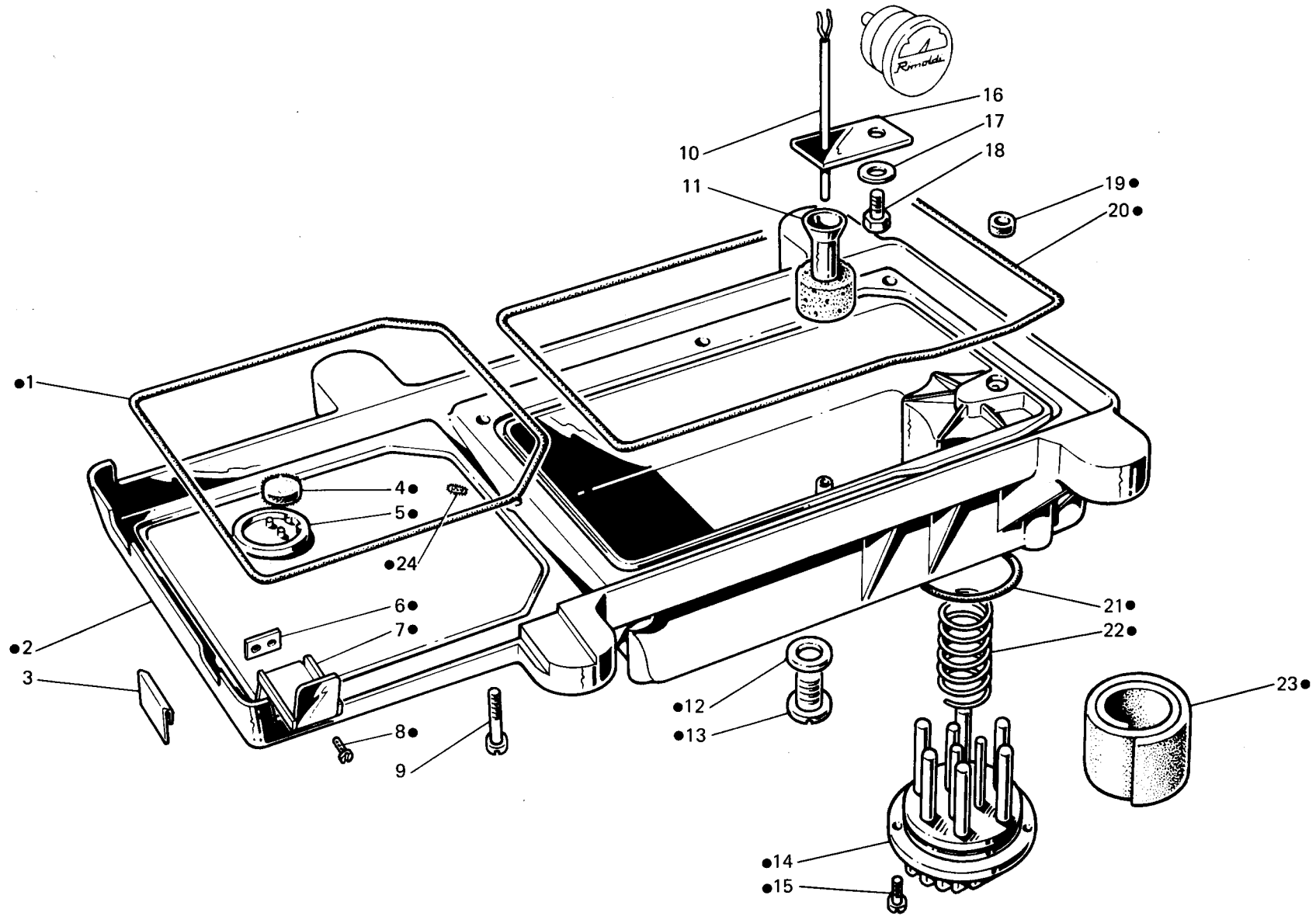


Fig. N. Abb. N.	Part. N. Bestell N. Piece N. Pieza N.	Qt. Anzahl	DESCRIZIONE	DESCRIPTION	DESCRIPTION	BENENNUNG	DESCRIPCION
●	308594-4-02	1	bacinella olio completa	oil sump assembly	reservoir huile complet		
1	308125-0-00	1	guarnizione	gasket	garniture		
2	308580-2-01	1	bacinella	sump	reservoir		
3	308002-0-00	2	piastrina per bacinella	sheet for sump	plaquette pour reservoir		
4	308151-0-00	1	filtro	filter	filtre		
5	308150-0-10	1	scodellino recupero olio	cup	cuvette		
6	304020-0-10	1	piastrina	plate	plaque		
7	304021-0-10	1	carterino	cover	carter		
8	721434-2-00	2	vite	screw	vis		
9	722453-2-00	6	vite fiss. bacinella	sump fixing screw	vis blocage reservoir		
10	308231-2-01	1	astina livello olio	stick	jauge niveau huile		
11	308228-2-00	1	galleggiante	float	flotteur		
12	705977-0-00	1	rondella	washer	rondelle		
13	206564-0-00	1	tappo	plug	bouchon		
14	206560-0-10	1	coperchio	cover	couvercle		
15	721464-2-00	2	vite	screw	vis		
16	308226-0-01	1	guida astina	guide for stich	guide barre		
17	703003-0-00	1	rondella elastica	spring washer	rondella élastique		
18	740240-0-00	1	vite	screw	vis		
19	308113-0-00	1	anello	oil ring	bague d'étanchéité		
20	308126-0-00	1	guarnizione	gasket	garniture		
21	701051-0-00	1	guarnizione	gasket	garniture		
22	206545-0-00	1	molla a spirale	spring	ressort		
23	206559-0-00	1	filtro olio	oil filter	filtre huile		
24	778461-0-00	1	stoppino	wick	mèche		

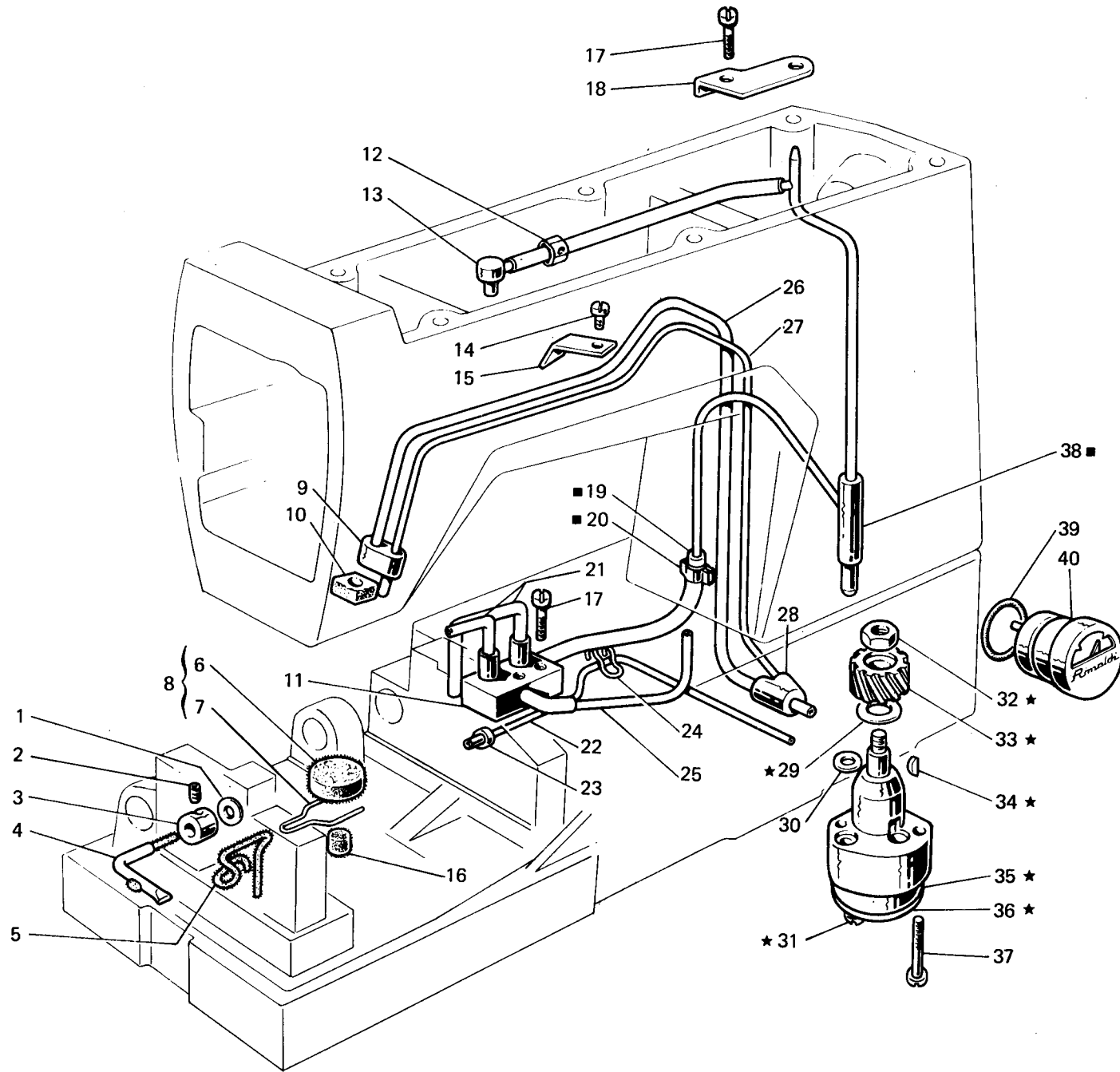


Fig. N. Abb. N.	Part. N. Bestell N. Pieze N. Pieza N.	Qt. Anzahl	DESCRIZIONE	DESCRIPTION	DESCRIPTION	BENENNUNG	DESCRIPCION
■	310500-4-00	1	raccordo mandata olio compl.	pipe connection assembly	raccord envoi huile compl.		
★	308105-4-01	1	pompa olio completa	oil pump assembly	pumpe huile complète		
1	300420-0-10	1	rondella	washer	rondelle		
2	730011-2-00	1	vite	screw	vis		
3	300419-0-10	1	raccordo	pipe union	raccord		
4	308243-3-00	1	tubetto e stoppino	pipe and wick	tube et mèche		
5	778240-0-00	1	stoppino	wick	mèche		
6	308153-0-01	1	filtro	filter	filtre		
7	308154-0-00	1	molletta	spring	ressort		
8	308155-4-01	1	gruppo molletta con filtro	spring with filter assembly	groupe ressort avec filtre		
9	308123-0-00	1	raccordo superiore	upper pipe union	raccord supérieur		
10	308219-0-00	1	feltro	felt	feutre		
11	308114-2-01	1	distributore	distributor	distributeur		
12	308040-2-00	1	tubetto	pipe	tube		
13	308214-0-00	1	raccordo mandata olio	pipe union	raccord		
14	721424-2-00	1	vite	screw	vis		
15	308184-0-00	1	fascetta	clamp	bride		
16	308295-0-00	1	filtro	filter	filtre		
17	721514-0-00	3	vite	screw	vis		
18	308104-0-00	1	piastrina	plate	plaquette		
19	308207-0-00	1	tubetto	pipe	tube		
20	308043-0-00	1	fascetta	clamp	bride		
21	790307-0-00	2	tubetto	pipe	tube		
22	790325-0-00	1	tubetto	pipe	tube		
23	308212-0-00	1	bussolina olio	bush	bague		
24	308211-0-00	2	clip	clip	clip		
25	790315-0-00	1	tubetto	pipe	tube		
26	790342-0-00	1	tubetto recupero olio	pipe	tube		
27	790242-0-00	1	tubetto recupero olio	pipe	tube		
28	308185-0-00	1	raccordo inferiore	lower pipe union	raccord inférieur		
29	704813-0-00	1	rondella	washer	rondelle		
30	701004-0-00	1	anello di tenuta	oil ring	bague d'étanchéité		
31	741082-2-00	2	vite	screw	vis		
32	733507-0-00	1	dado	nut	écrou		
33	206555-0-00	1	ingranaggio	gear	engrenage		
34	206557-0-00	1	chiavetta	key	clavette		
35	308110-3-00	1	corpo pompa aspirante	suction pump body	corps pompe admission		
36	308111-0-00	1	coperchio pompa	pump cover	couvercle pompe		
37	741092-0-00	2	vite fissaggio pompa	pump fixing screw	vis fixation pompe		
38	308180-2-00	1	raccordo mandata olio	pipe union	raccord		
39	701032-0-00	1	anello di tenuta	oil ring	bague d'étanchéité		
40	206669-2-01	1	indicatore livello olio	oil level gauge	indicateur niveau huile		

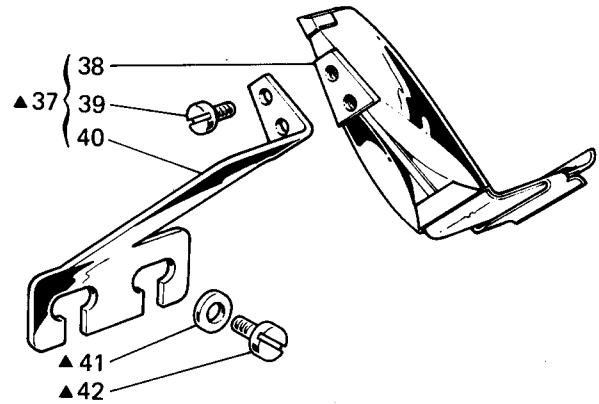
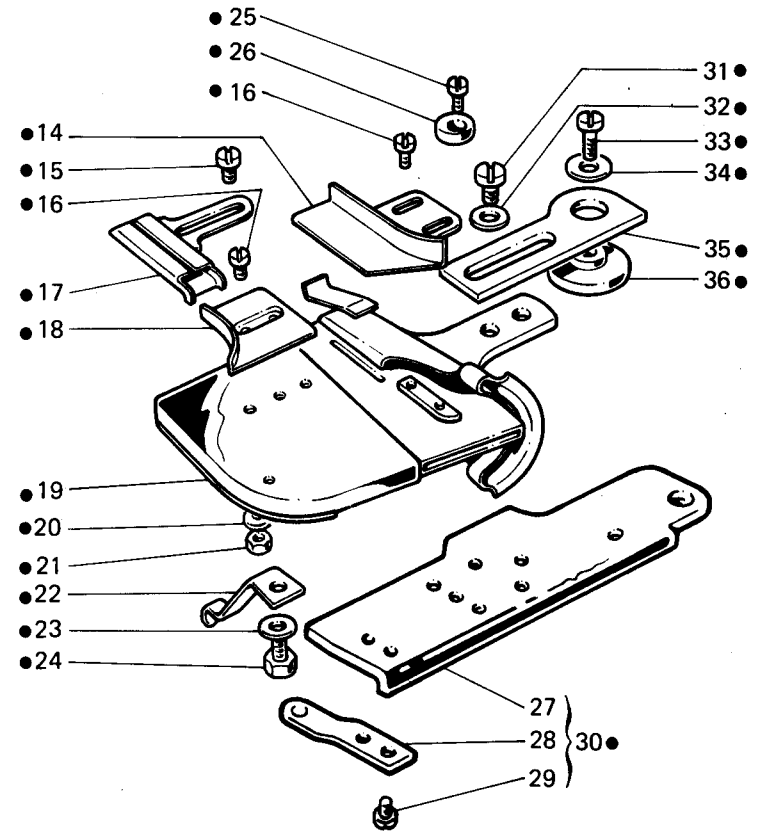
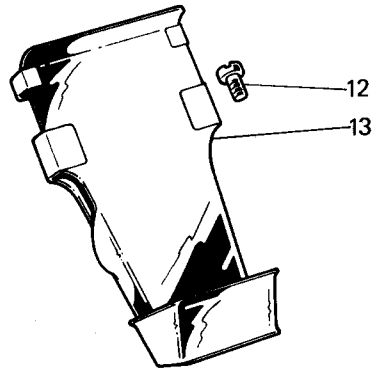
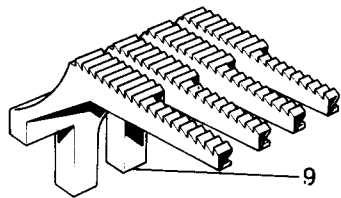
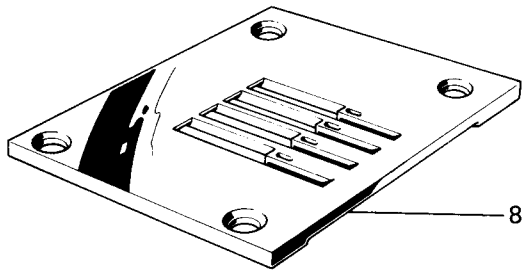
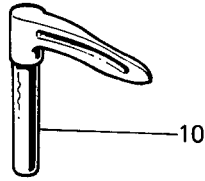
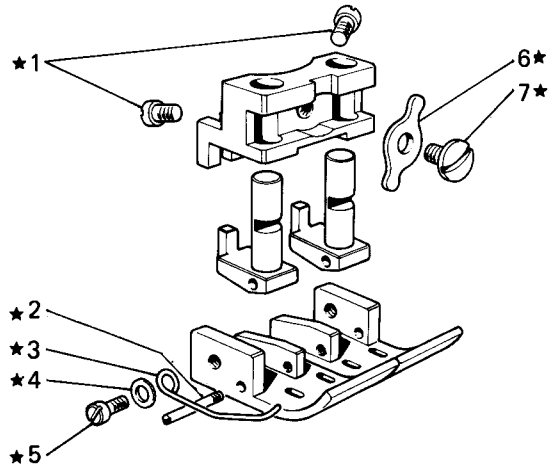


Fig. N. Abb. N.	Part. N. Bestell N. Piece N. Pieza N.	Qt. Anzahl	DESCRIZIONE	DESCRIPTION	DESCRIPTION	BENENNUNG	DESCRIPCION
★	306674-3-00	1	pedino completo	presserfoot assembly	pied-presseur complet		
●	309390-4-00	1	guida frontale completa	front guide assembly	guide avant complet		
▲	310066-4-00	1	guida a imbuto inf. compl.	lower guide assembly	guide inférieur complet		
1	742010-2-00	2	vite	screw	vis		
2	300120-0-10	2	spina filettata	pin	goupille		
3	990809-0-00	2	salvadita	protection	protection		
4	704206-2-00	2	rondella	washer	rondelle		
5	741711-2-00	2	vite	screw	vis		
6	304222-0-11	1	bilanciere	compensator	balancier		
7	304221-0-11	1	vite	screw	vis		
8	304200-0-11	1	placca ago	needle plate	plaque à aiguille		
9	304162-0-10	1	griffa	feed dog	griffe		
10	304186-0-11	2	crochet inferiore	lower looper	crochet inférieur		
11	745481-0-20	1	targhetta classe testa	head class plate	plaque classe tête		
12	721435-2-00	1	vite	screw	vis		
13	304294-3-10	1	guida imbuto superiore	upper guide	guide supérieur		
14	304276-2-10	1	guida del materiale	fabric guide	guide du tissu		
15	203589-0-10	2	vite	screw	vis		
16	201236-0-10	3	vite	screw	vis		
17	304320-2-10	1	tubetto	pipe	tube		
18	304288-0-10	1	guida	guide	guide		
19	304283-3-10	1	guida imbuto	guide	guide		
20	704104-2-00	2	vite	screw	vis		
21	746002-2-00	2	dado	nut	écrou		
22	300276-0-10	1	molla	spring	ressort		
23	704210-4-00	1	rondella	washer	rondelle		
24	720431-2-00	1	vite	screw	vis		
25	744634-0-00	1	vite	screw	vis		
26	300710-0-10	1	rondella eccentrica	eccentric washer	rondelle excentrique		
27	309260-0-00	1	piastra piano lavoro	plate	plaque		
28	204188-0-10	1	molla	spring	ressort		
29	721412-2-00	2	vite	screw	vis		
30	309274-4-00	1	piastra piano lavoro compl.	plate assembly	plaque complète		
31	202397-0-10	2	vite	screw	vis		
32	704226-2-00	2	rondella	washer	rondelle		
33	742055-0-00	1	vite	screw	vis		
34	704708-0-00	1	rondella	washer	rondelle		
35	304268-0-10	1	supporto	support	support		
36	309389-0-00	1	distanziale	spacer	entretoise		
37	304297-4-10	1	guida imbuto inferiore	lower guide	guide inférieur		
38	304295-0-10	1	guida imbuto	guide	guide		
39	741657-0-00	2	vite	screw	vis		
40	304299-0-10	1	supporto	support	support		
41	704011-0-00	2	rondella	washer	rondelle		
42	742237-0-00	2	vite	screw	vis		

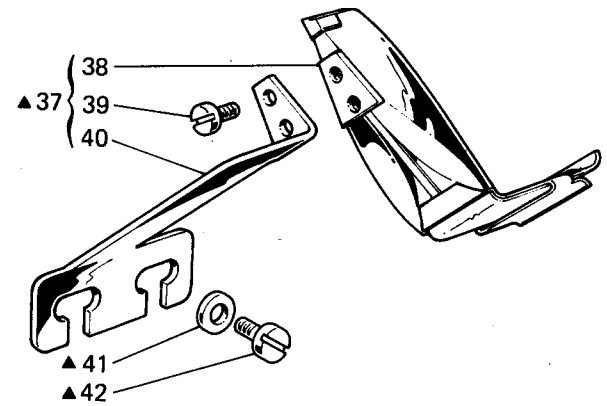
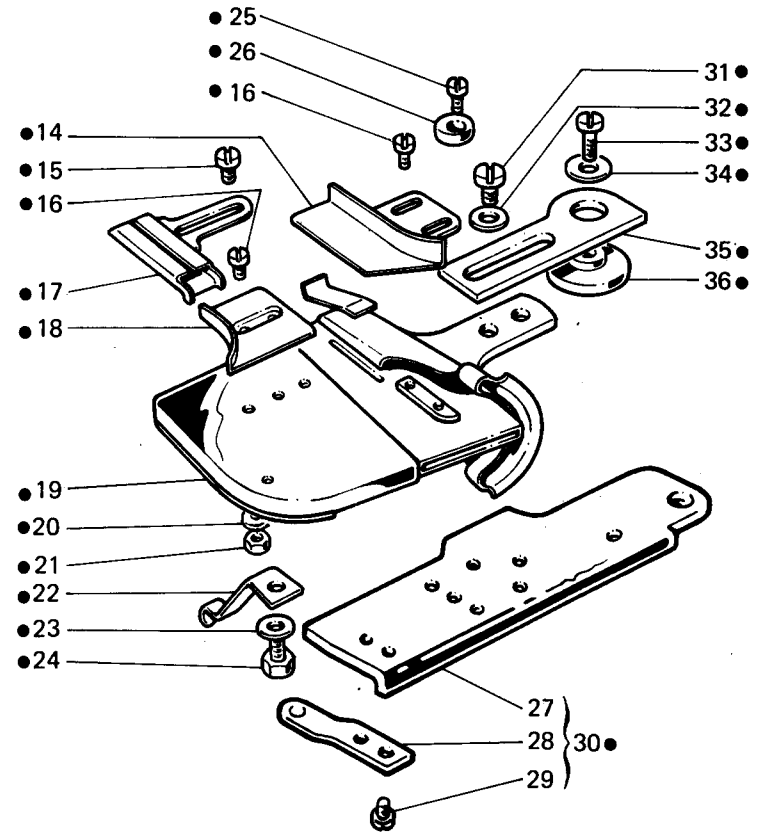
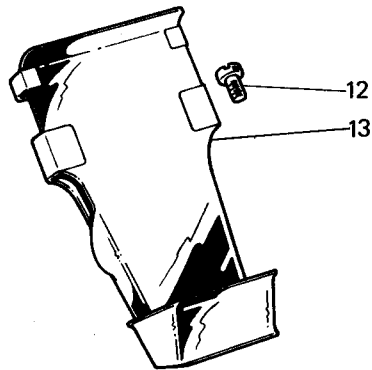
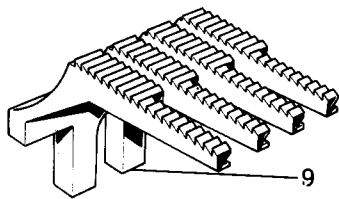
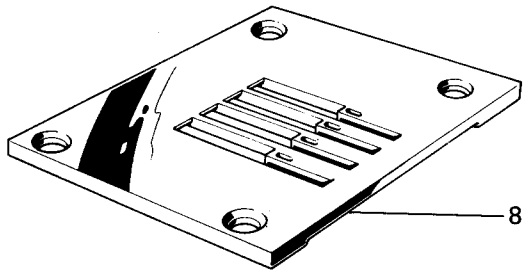
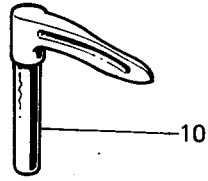
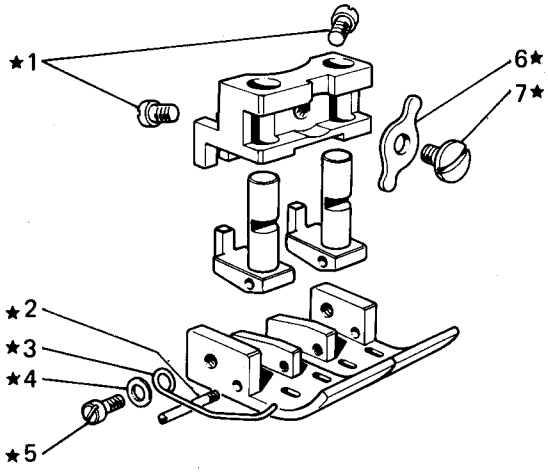


Fig. N. Abb. N.	Part. N. Bestell N. Piece N. Pieza N.	Qt. Anzahl	DESCRIZIONE	DESCRIPTION	DESCRIPTION	BENENNUNG	DESCRIPCION
			SOLO A RICHIESTA	ONLY ON REQUEST	SEULEMENT SUR DEMANDE		
●	309391-4-00	1	guida frontale compl.	front guide assembly	guide avant complet		
▲	310067-4-00	1	guida imbuto inf. compl.	lower guide assembly	guide inférieur complet		
17	304321-2-00	1	tubetto	pipe	tube		
19	304284-3-10	1	guida imbuto	guide	guide		
37	304298-4-10	1	guida imbuto inf.	lower guide	guide inférieur		
38	304296-0-10	1	guida imbuto	guide	guide		

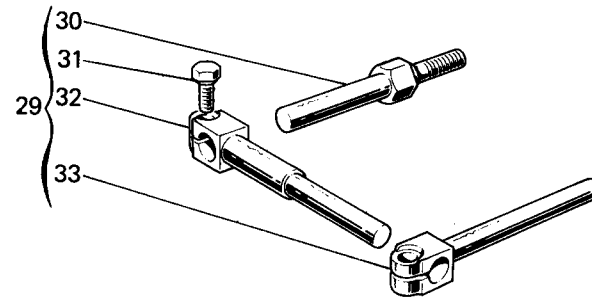
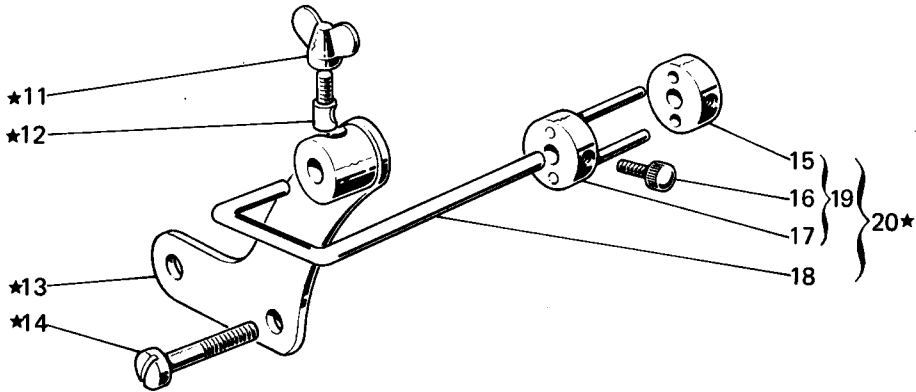
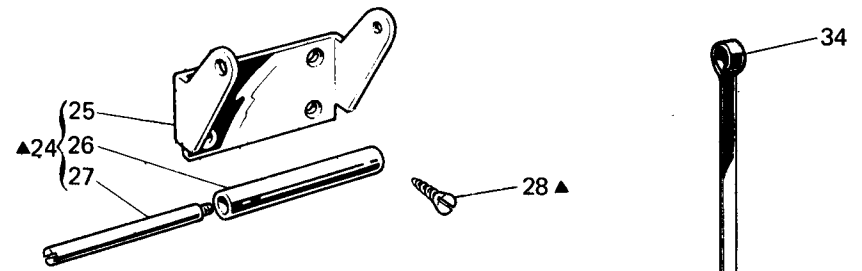
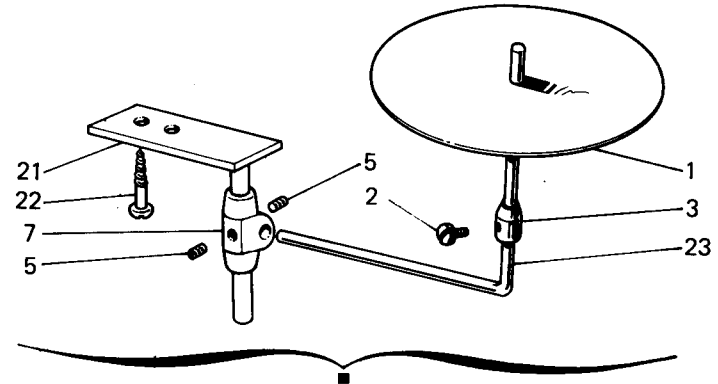
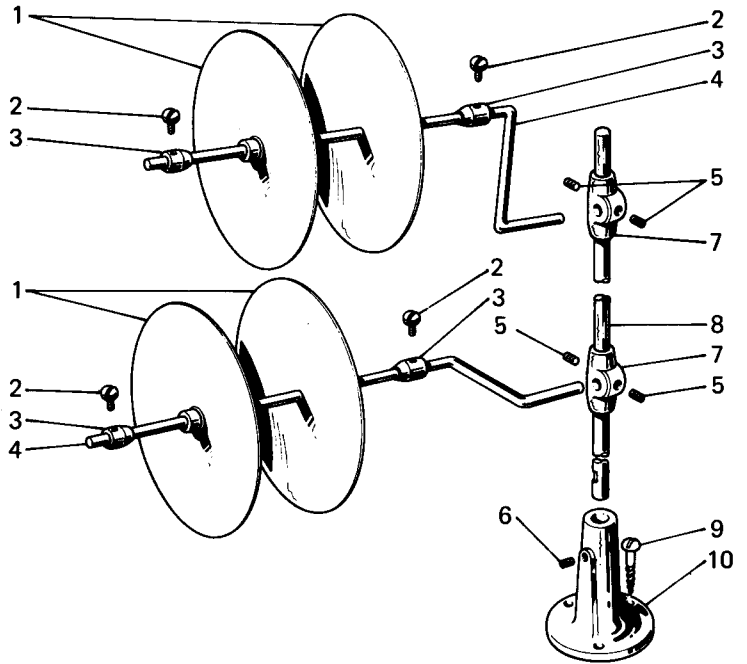


Fig. N. Abb. N.	Part. N. Bestell N. Pieze N. Pieza N.	Ct. Anzahl	DESCRIZIONE	DESCRIPTION	DESCRIPTION	BENENNUNG	DESCRIPCION
●	991230-4-00	1	porta rotolo completo	roll carrier assembly	porte-rouleau complet		
★	930444-4-10	1	frenaggio completo	brake assembly	freinage complet		
■	991235-4-00	1	porta rotolo completo	roll carrier assembly	porte-rouleau complet		
▲	930743-4-00	2	staffa con viti e rulli	bracket with screws and rollers	bride avec vis et rouleaux		
1	990628-2-10	5	disco	disc	disque		
2	990596-0-10	5	pomolo	knob	pommeau		
3	990594-2-00	5	anello conico	ring cone	bague conique		
4	990704-0-11	2	spina	pin	goupille		
5	729024-2-00	6	vite	screw	vis		
6	729054-2-00	1	vite	screw	vis		
7	991153-2-00	3	supporto	support	support		
8	990592-0-11	1	asta	rod	tige		
9	731107-2-00	3	vite	screw	vis		
10	991114-2-00	1	basetta	base	base		
11	930136-0-10	1	dado con aletta	nut with flyer	écrou avec ailette		
12	930067-0-10	1	spina filettata	pin	goupille		
13	930427-3-10	1	sostegno	support	support		
14	930281-0-11	2	vite	screw	vis		
15	930094-0-10	1	morsetto	clamp	collier de serrage		
16	930096-0-10	2	pomolo	knob	pommeau		
17	930358-2-10	1	morsetto con spina	clamp with pin	collier de serrage avec goupille		
18	930442-0-10	1	spina	pin	goupille		
19	930359-4-10	1	morsetto completo	clamp assembly	collier de serrage complet		
20	930443-4-10	1	frenaggio	brake	freinage		
21	990422-2-11	1	asta con base	rod with base	tige avec base		
22	731295-0-00	2	vite	screw	vis		
23	990702-0-11	1	astina	rod	tige		
24	990697-4-10	1	staffa completa	bracket assembly	bride complète		
25	990696-0-10	1	staffa	bracket	bride		
26	301479-0-10	1	rullo	roller	rouleau		
27	301480-0-10	1	perno	pin	pivot		
28	731263-0-00	4	vite	screw	vis		
29	930445-4-10	1	supporto regolabile compl.	adjustment support ass.	support réglable compl.		
30	304107-0-10	1	perno a vite	pin	pivot		
31	202486-0-10	2	vite	screw	vis		
32	930272-0-10	1	supporto	support	support		
33	930432-0-10	1	supporto	support	support		
34	930105-0-10	1	astina	rod	tige		

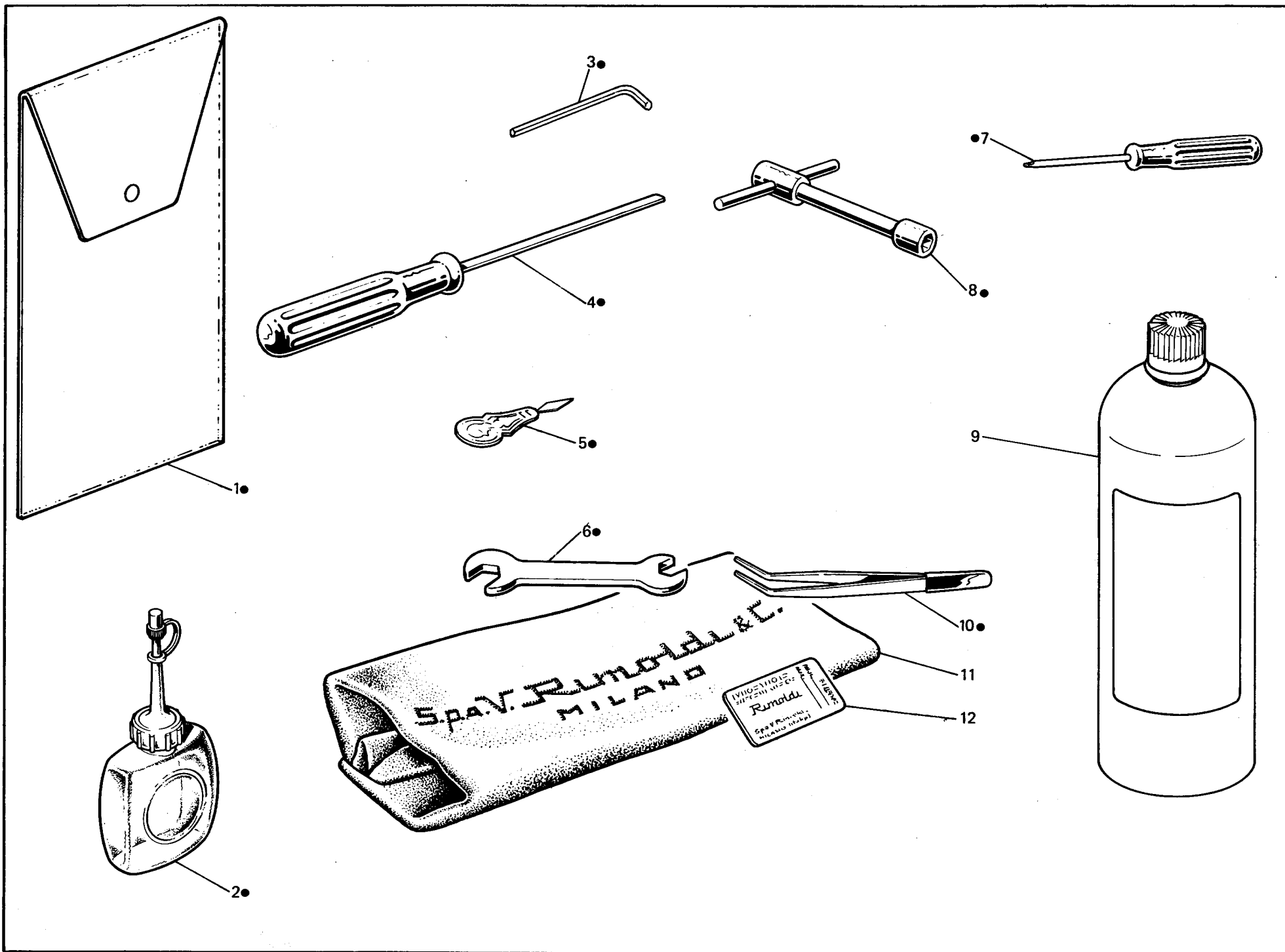


Fig. N. Abb. N.	Part. N. Piece N. Bestell N. Pieza N.	Qt. Anzahl	DESCRIZIONE	DESCRIPTION	DESCRIPTION	BENENNUNG	DESCRIPCION
●	991408-4-00	1	busta accessori completa	accessories envelope assembly	envelope accessoires complète		
1	991415-0-00	1	busta accessori	accessories envelope	envelope accessoires		
2	990175-0-10	1	oliatore	oiler	graisseur		
3	990474-0-10	1	chiave esagonale da 1,5 mm	1.5 mm hexagonal key	clé hexagonale de 1,5 mm		
4	990181-0-10	1	cacciavite medio	screw-driver	tournevis moyen		
5	990188-0-10	1	infila aghi	needle threading	enfiles aiguilles		
6	990193-0-00	1	chiave da 5-7 mm	5-7 mm key	clé de 5-7 mm		
7	990182-0-10	1	cacciavite piccolo	screw driver	petit tournevis		
8	990587-0-10	1	chiave a tubo da 9 mm	9 mm key	clé a tube de 9 mm		
9	990075-1-13	1	lattina olio kg. 1	oil container 1 kg	bidon huile de 1 kg		
10	990176-0-10	1	pinza per infilatura	threading tweezers	pince pour infilage		
11	990578-0-12	1	cuffia protez. macchina	machine cover	couverture protection machine		
12	★	1	bustina aghi	needle packet	paquette aiguille		
			★ per l'ordinazione della bustina citare lo stesso simbolo dell'ago montato sulla testa .	to order packet of needles please specify symbol of needle fitted on machine	pour commander un sachet d'aiguille donner le symbol de l'aiguille montée sur la tête		

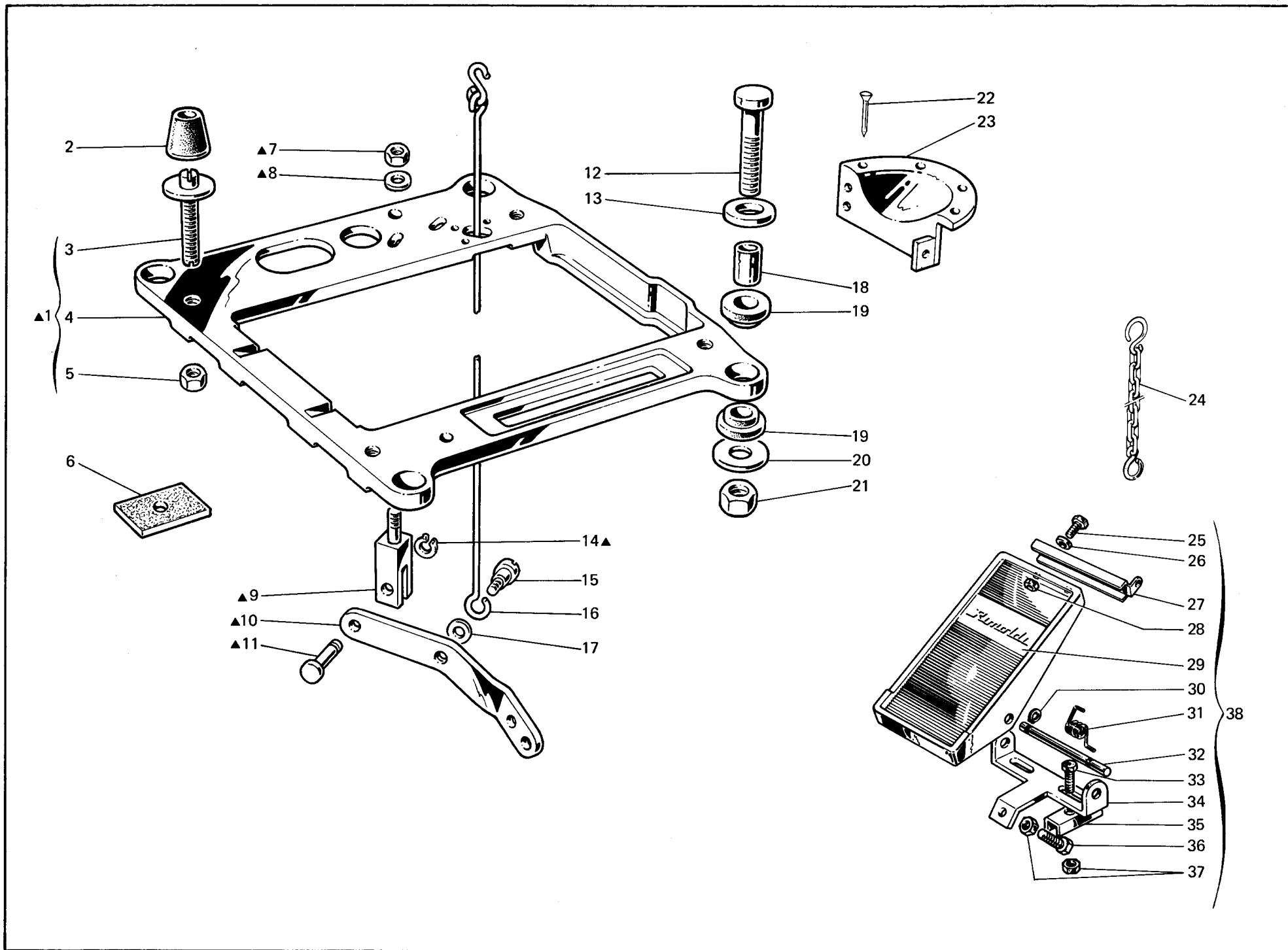


Fig. N. Abb. N.	Part. N. Bestell N. Piece N. Pieza N.	Qt. Anzahl	DESCRIZIONE	DESCRIPTION	DESCRIPTION	BENENNUNG	DESCRIPCION
▲	991253-4-00	1	PIAZZAMENTO NORMALE	NORMAL SETTING	INSTALLATION NORMAL		
1	991251-4-00	1	supporto testa completo	head support assembly	support tête complet		
2	990982-0-00	4	ammortizzatore	shock absorber	amortisseur		
3	990694-0-11	4	perno	pin	pivot		
4	991250-0-00	1	supporto testa	head support	support tête		
5	733008-2-00	4	dado	nut	écrou		
6	900203-0-10	4	ammortizzatore per tavola	shock absorber	amortisseur pour table		
7	746409-2-00	1	dado	nut	écrou		
8	704316-2-00	1	rondella	washer	rondelle		
9	991256-0-00	1	supportino per leva	support for lever	support pour levier		
10	991255-0-00	1	leva	lever	levier		
11	991257-0-00	1	perno	pin	pivot		
12	722905-2-00	4	vite	screw	vis		
13	704346-2-00	4	rondella	washer	rondelle		
14	700208-0-00	1	anello elastico	spring ring	anneau ressort		
15	743541-2-00	1	vite	screw	vis		
16	991259-3-00	1	tirante	tie-rod	tirant		
17	704310-2-00	1	rondella	washer	rondelle		
18	901102-0-00	4	distanziale	spacer	entretoise		
19	901101-0-00	8	ammortizzatore	shock absorber	amortisseur		
20	704345-2-00	4	rondella	washer	rondelle		
21	733813-0-00	4	dado	nut	écrou		
22	900201-0-10	7	chiodini	rivets	clous		
23	990317-0-10	1	protezione volantino	handwheel protection	protection volant		
24	990179-4-11	1	catenella	chain	chaînette		
25	720464-0-00	2	vite	screw	vis		
26	704009-0-00	2	rondella	washer	rondelle		
27	900926-0-00	1	attacco	coupling	raccord		
28	733508-4-00	2	dado	nut	écrou		
29	900931-0-00	1	copertura	covering	couverture		
30	900918-0-00	2	anello elastico	spring ring	anneau ressort		
31	900927-0-00	1	molla	spring	ressort		
32	900928-0-00	1	perno	pin	pivot		
33	720505-4-00	2	vite	screw	vis		
34	900929-0-01	1	supporto	support	support		
35	900920-0-00	2	piastrina	plate	plaquette		
36	720545-4-00	1	vite	screw	vis		
37	733510-4-00	3	dado	nut	écrou		
38	900925-4-01	1	pedalina completa	pedal assembly	pédale complète		

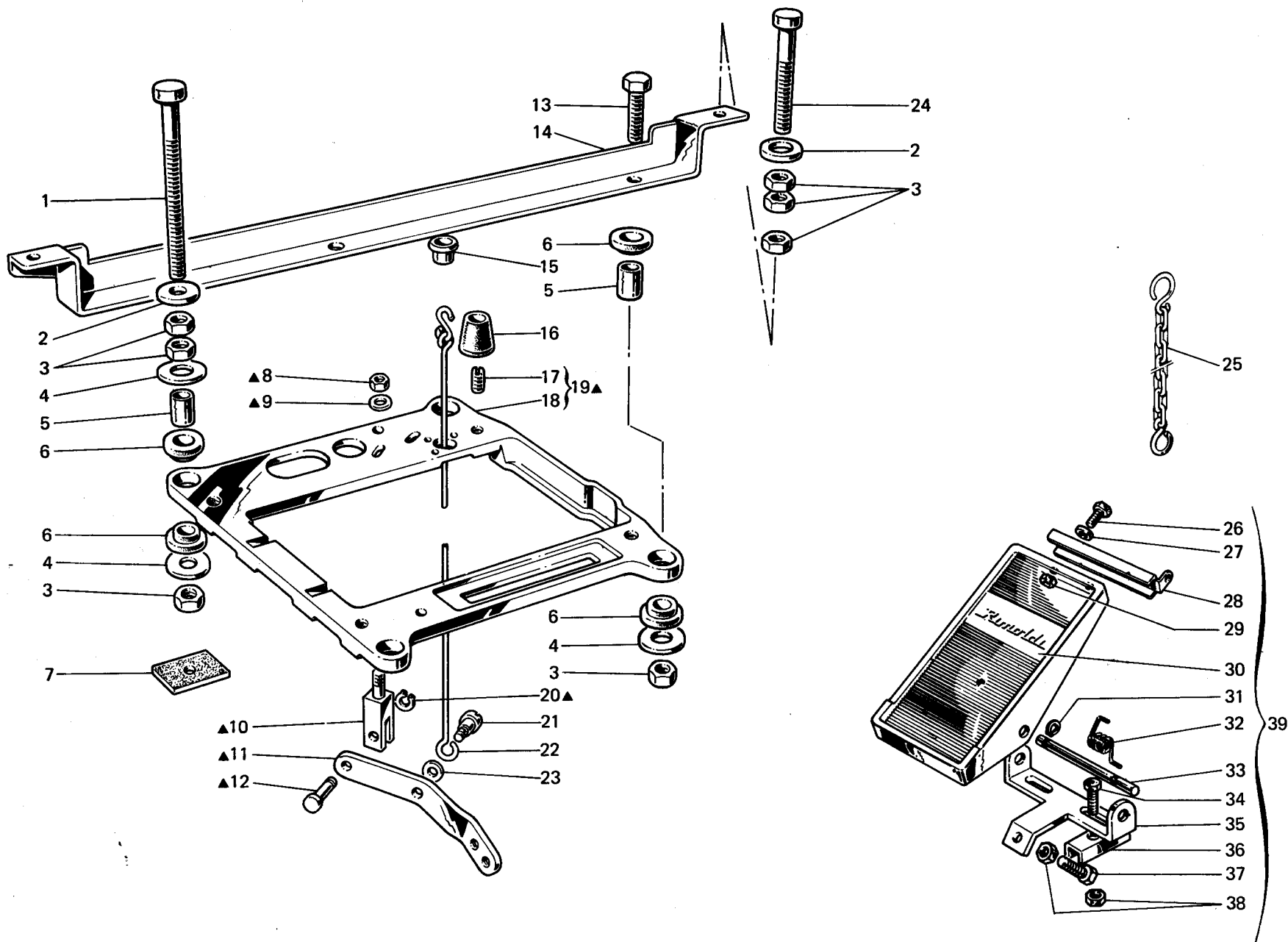


Fig. N. Abb. N.	Part. N. Bestell N. Piece N. Pieza N.	Qt. Anzahl	DESCRIZIONE	DESCRIPTION	DESCRIPTION	BENENNUNG	DESCRIPCION
▲	991254-4-00	1	PIAZZAMENTO INCASSATO	SUBMERGED SETTING	INSTALLATION ENCASTREE		
1	722920-2-00	2	supporto testa completo	head support assembly	support tête complet		
2	704346-2-00	4	vite	screw	vis		
3	733813-0-00	14	rondella	washer	rondelle		
4	704345-2-00	6	dado	nut	écrou		
5	901102-0-00	4	rondella	washer	rondelle		
6	901101-0-00	8	distanziale	spacer	entretoise		
7	900203-0-10	4	ammortizzatore	shock absorber	amortisseur		
8	746409-2-00	1	ammortizzatore per tavola	shock absorber	amortisseur pour table		
9	746409-2-00	1	dado	nut	écrou		
10	704316-2-00	1	rondella	washer	rondelle		
11	991256-0-00	1	supportino per leva	support for lever	support pour levier		
12	991255-0-00	1	leva	lever	levier		
13	991257-0-00	1	perno	pin	pivot		
14	720546-0-00	2	vite	screw	vis		
15	901251-2-00	1	staffa	bracket	bride		
16	900204-0-10	1	bussola	bush	bague		
17	990982-0-00	4	ammortizzatore	shock absorber	amortisseur		
18	901253-0-00	4	vite	screw	vis		
19	991250-0-00	1	supporto testa	head support	support tête		
20	991252-4-00	1	supporto testa con viti	head support with screws	support tête avec vis		
21	700208-0-00	1	anello elastico	spring ring	anneau ressort		
22	743541-2-00	1	vite	screw	vis		
23	991259-3-00	1	tirante	tie-rod	tirant		
24	704310-2-00	1	rondella	washer	rondelle		
25	722907-2-00	2	vite	screw	vis		
26	990179-4-11	1	catenella	chain	chaînette		
27	720464-0-00	2	vite	screw	vis		
28	704009-0-00	2	rondella	washer	rondelle		
29	900926-0-00	1	attacco	coupling	raccord		
30	733508-4-00	2	dado	nut	écrou		
31	900931-0-00	1	copertura	covering	couverture		
32	900918-0-00	2	anello elastico	spring ring	anneau ressort		
33	900927-0-00	1	molla	spring	ressort		
34	900928-0-00	1	perno	pin	pivot		
35	720505-4-00	2	vite	screw	vis		
36	900929-0-01	1	supporto	support	support		
37	900920-0-00	2	piastrina	plate	plaquette		
38	720545-4-00	1	vite	screw	vis		
39	733510-4-00	3	dado	nut	écrou		
	900925-4-01	1	pedalina completa	pedal assembly	pédale complète		

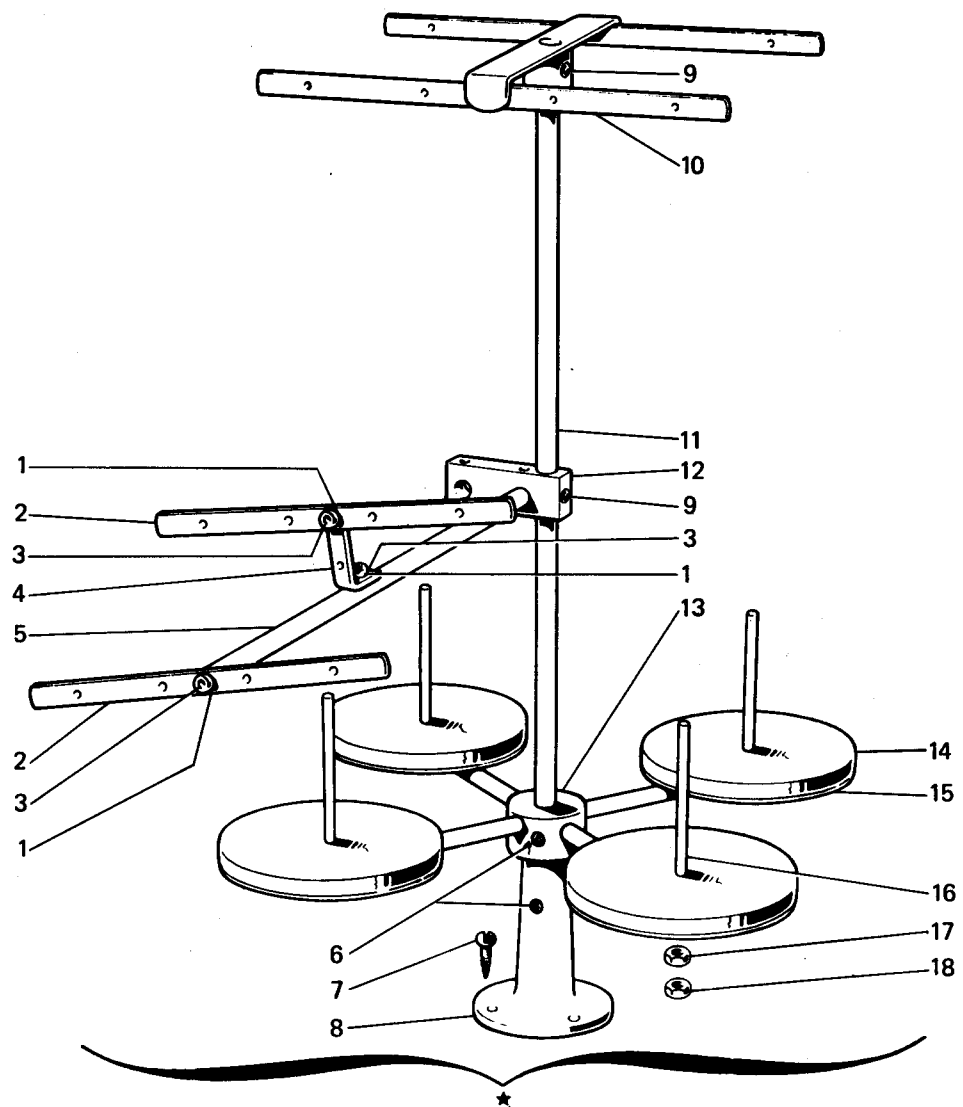


Fig. N. Abb. N.	Part. N. Bestell N. Pieze N. Pieza N.	Ct. Anzahl	DESCRIZIONE	DESCRIPTION	DESCRIPTION	BENENNUNG	DESCRIPCION
★	991120-5-00	1	porta bobine compl. (4-3 fili)	bobbin carrier ass. (3-4 threads)	porte bobine compl. (3-4 fils)		
1	703005-0-00	3	rondella	washer	rondelle		
2	991108-2-00	2	telaietto con bussole	frame with bushes	bâti avec bagues		
3	722431-2-00	3	vite	screw	vis		
4	991107-2-00	1	squadretta con viti e rondelle	bracket with screws and washers	équerre avec vis et rondelles		
5	991106-2-00	1	asta con rondelle e viti	rod with washers and screws	tige avec rondelles et vis		
6	729054-2-00	3	vite	screw	vis		
7	731107-2-00	3	vite da legno	screw	vis		
8	991114-2-00	1	basetta	base	base		
9	729034-2-00	3	vite	screw	vis		
10	991121-3-00	1	telaietto superiore	upper frame with screws	bâti supérieur avec vis		
11	991113-0-00	1	asta principale	main rod	tige principale		
12	991128-2-00	1	blocchetto con viti	block with screws	bloc avec vis		
13	991129-3-00	1	mozzo con aste e viti	hub with rod and screws	moyeu avec tiges et vis		
14	991179-0-00	4	disco	disc	disque		
15	991112-0-00	4	piatto	disc	plateau		
16	991111-2-00	4	astina con dadi	rod with nuts	tige avec écrous		
17	925433-0-00	4	dado	nut	écrou		
18	733508-2-00	4	dado	nut	écrou		